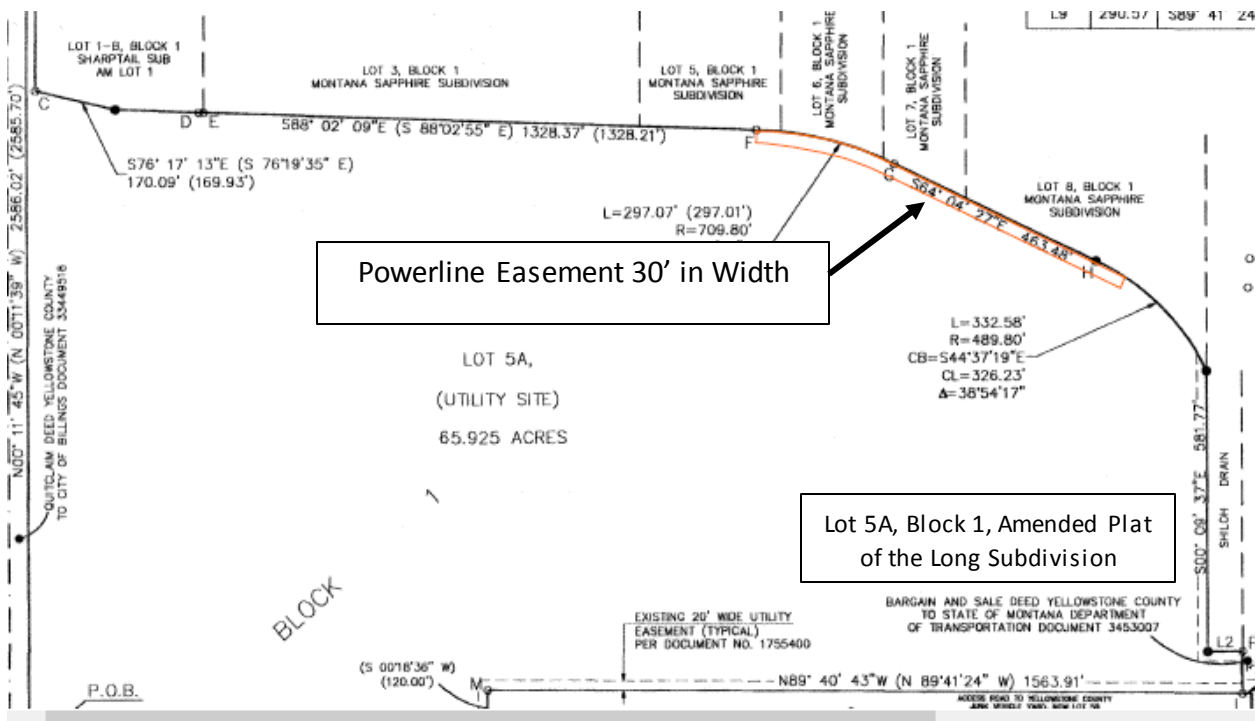


Exhibit "A"

The following is made a part of that certain Overhead Electric Powerline Easement dated August ____, 2020, by and between the **CITY OF BILLINGS**, a Montana municipal corporation, P.O. Box 1178, Billings, MT, 59103-1178, and **NORTHWESTERN CORPORATION D/B/A NORTHWESTERN ENERGY**, a Delaware corporation, 11 East Park Street, Butte, MT 59701-1711, and its successors, assigns, and apportionees.

All distances, areas and measurements shown below are approximate and not to scale.



Township 1 South, Range 25 East, P.M.M., Yellowstone County, MT

Section 15: A tract of land in the NE4 and SE4 of said Section, known as Lot 5A, Block 1, of the Plat of Amended Lot 5, Block 1, of the Long Subdivision, as depicted in the official plat on file in the office of the Clerk and Recorder of Yellowstone County, MT under Document No. 3585198.