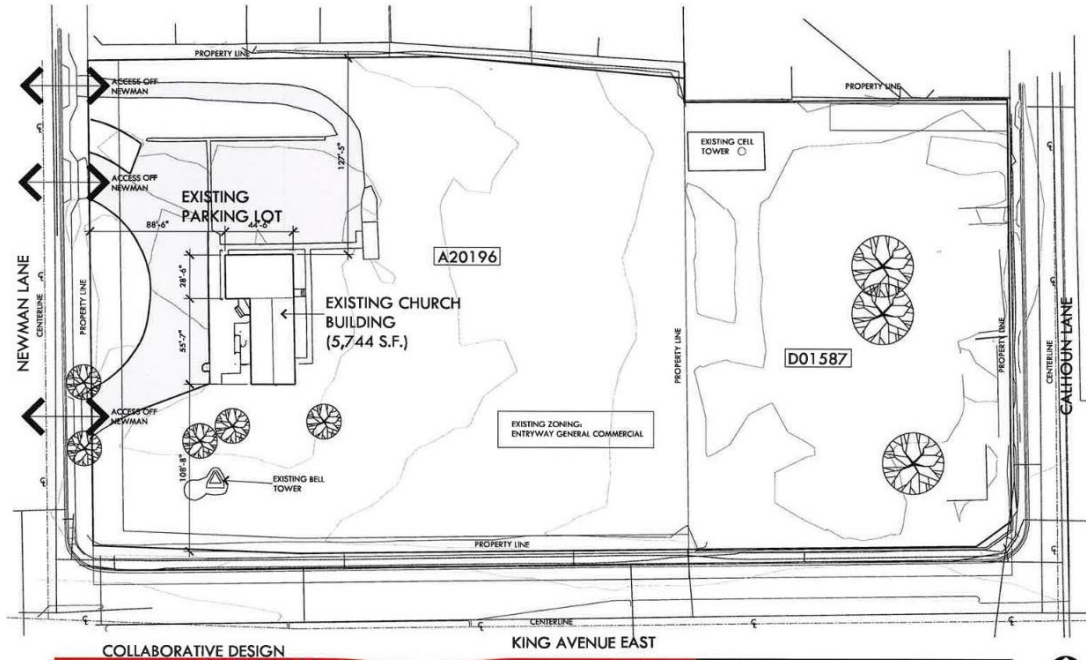
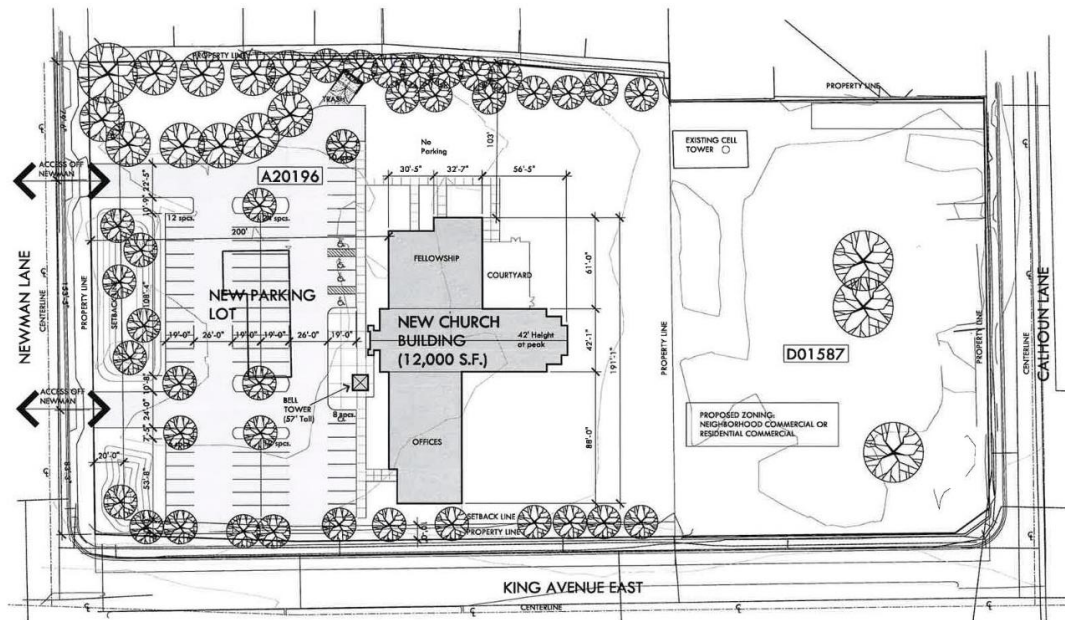


Site Plan



Existing



Proposed



Collaborative Design Architects
 10000 17th Avenue SW, Suite 100
 Golden, CO 80401
 Phone: (303) 440-1111
 Website: www.collaborativedesign.com

Collaborative Design Architects
 10000 17th Avenue SW, Suite 100
 Golden, CO 80401
 Phone: (303) 440-1111
 Website: www.collaborativedesign.com

SPRINKLER CONSTRUCTION DOCUMENTS
 CHRIST THE KING LUTHERAN CHURCH
 4525 KENNETH BLVD. CITY, COLORADO 80401
 PROJECT NO. 17-0001
 SHEET NO. A201
 GENERAL CONTRACTOR

1 WEST ELEVATION
 Scale: 1/8" = 1'-0"

2 NORTH ELEVATION
 Scale: 1/8" = 1'-0"

3 SOUTH ELEVATION
 Scale: 1/8" = 1'-0"

4 EAST ELEVATION
 Scale: 1/8" = 1'-0"

5 BUTTRESS DETAIL
 Scale: 1/2" = 1'-0"

EXTERIOR MATERIALS and GENERAL NOTES

NO.	DESCRIPTION	MANUFACTURER/TYPE	FINISH
1	CONCRETE	CONCRETE	CONCRETE
2	BRICK	BRICK	BRICK
3	GLASS	GLASS	GLASS
4	WOOD	WOOD	WOOD
5	ROOFING	ROOFING	ROOFING
6	PAINT	PAINT	PAINT
7	SPROUTS	SPROUTS	SPROUTS
8	SPROUTS	SPROUTS	SPROUTS
9	SPROUTS	SPROUTS	SPROUTS
10	SPROUTS	SPROUTS	SPROUTS
11	SPROUTS	SPROUTS	SPROUTS
12	SPROUTS	SPROUTS	SPROUTS
13	SPROUTS	SPROUTS	SPROUTS
14	SPROUTS	SPROUTS	SPROUTS
15	SPROUTS	SPROUTS	SPROUTS
16	SPROUTS	SPROUTS	SPROUTS
17	SPROUTS	SPROUTS	SPROUTS
18	SPROUTS	SPROUTS	SPROUTS
19	SPROUTS	SPROUTS	SPROUTS
20	SPROUTS	SPROUTS	SPROUTS

ADDITIONAL NOTES:
 1. ALL MATERIALS TO BE USED IN ACCORDANCE WITH THE SPECIFICATIONS AND STANDARDS OF THE ARCHITECT AND THE GENERAL CONTRACTOR.
 2. THE CONTRACTOR SHALL BE RESPONSIBLE FOR OBTAINING ALL NECESSARY PERMITS AND APPROVALS FROM THE LOCAL AUTHORITIES.
 3. THE CONTRACTOR SHALL BE RESPONSIBLE FOR PROTECTING ALL EXISTING UTILITIES AND STRUCTURES.
 4. THE CONTRACTOR SHALL BE RESPONSIBLE FOR MAINTAINING ACCESS TO ALL ADJACENT PROPERTIES.
 5. THE CONTRACTOR SHALL BE RESPONSIBLE FOR PROTECTING ALL EXISTING TREES AND LANDSCAPE.
 6. THE CONTRACTOR SHALL BE RESPONSIBLE FOR MAINTAINING THE SAFETY OF THE CONSTRUCTION SITE.
 7. THE CONTRACTOR SHALL BE RESPONSIBLE FOR OBTAINING ALL NECESSARY INSURANCE AND BONDING.
 8. THE CONTRACTOR SHALL BE RESPONSIBLE FOR OBTAINING ALL NECESSARY SCHEDULES AND PERMITS.
 9. THE CONTRACTOR SHALL BE RESPONSIBLE FOR OBTAINING ALL NECESSARY APPROVALS FROM THE LOCAL AUTHORITIES.
 10. THE CONTRACTOR SHALL BE RESPONSIBLE FOR OBTAINING ALL NECESSARY APPROVALS FROM THE LOCAL AUTHORITIES.