

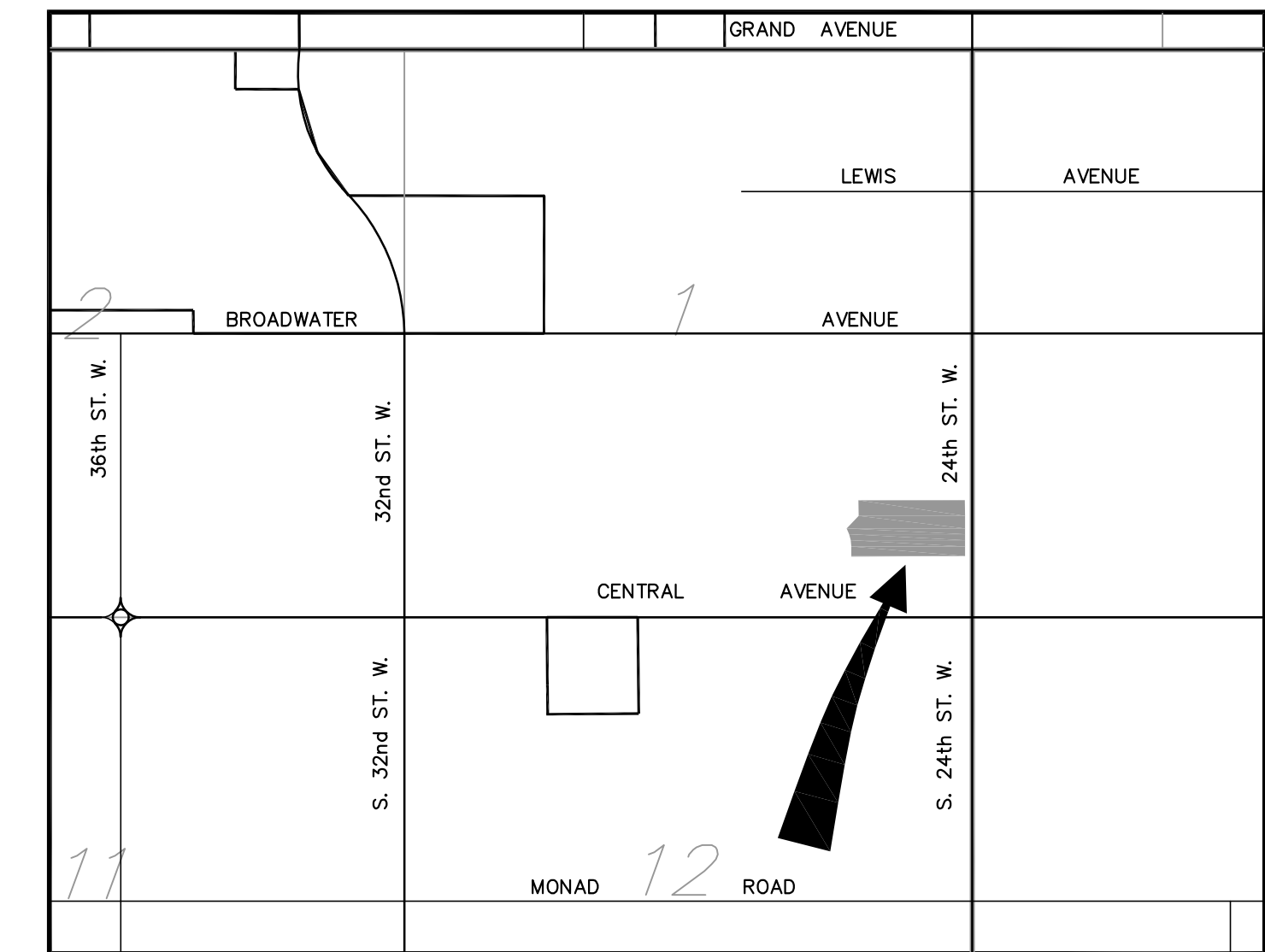
PRELIMINARY PLAT OF AMENDED LOTS 1-B-1 AND 1-C, BLOCK 29
DESCRO SUBDIVISION, SEVENTH FILING

SITUATED IN THE SE1/4 OF SECTION 1, T. 1S., R.25 E., P.M.M.
 IN THE CITY OF BILLINGS, YELLOWSTONE COUNTY, MONTANA

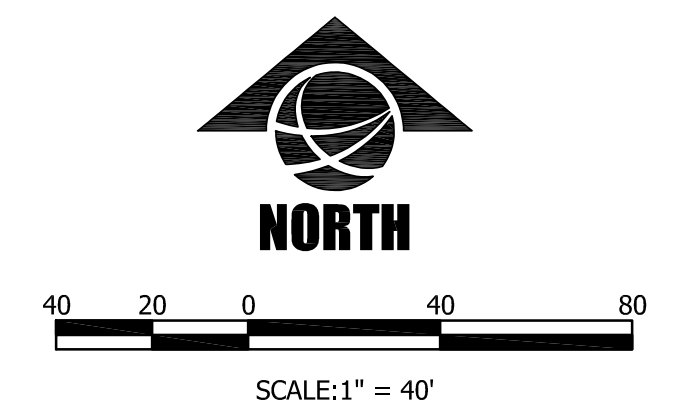
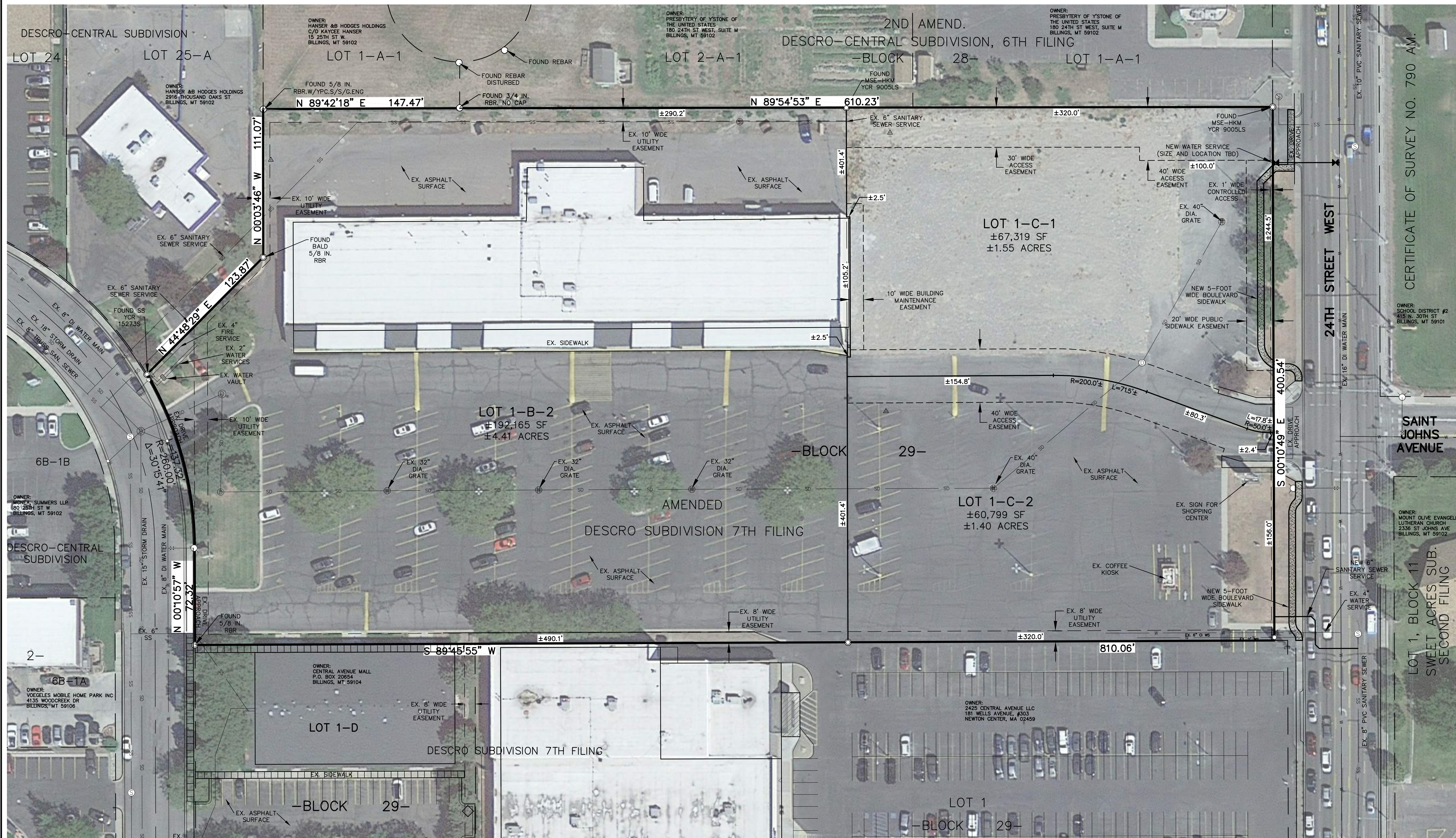
PREPARED FOR : CENTRAL AVENUE MALL, LLP.

PREPARED BY : SANDERSON STEWART 

JUNE 2020
 BILLINGS, MONTANA



VICINITY MAP
 NOT TO SCALE



PLAT DATA

GROSS AREA	= ±7.36 Ac.
NET AREA	= ±7.36 Ac.
NUMBER OF LOTS	= THREE
MINIMUM LOT SIZE	= ±1.40 Ac.
MAXIMUM LOT SIZE	= ±4.41 Ac.
PARKLAND REQUIREMENT	= NONE
EXISTING ZONING	= COMMUNITY COMMERCIAL
SURROUNDING ZONING:	
NORTH	= RESIDENTIAL PROFESSIONAL
SOUTH	= COMMUNITY COMMERCIAL
EAST	= PUBLIC
WEST	= RESIDENTIAL 6000
EXISTING LAND USE	= COMMUNITY COMMERCIAL
PROPOSED LAND USE	= COMMERCIAL