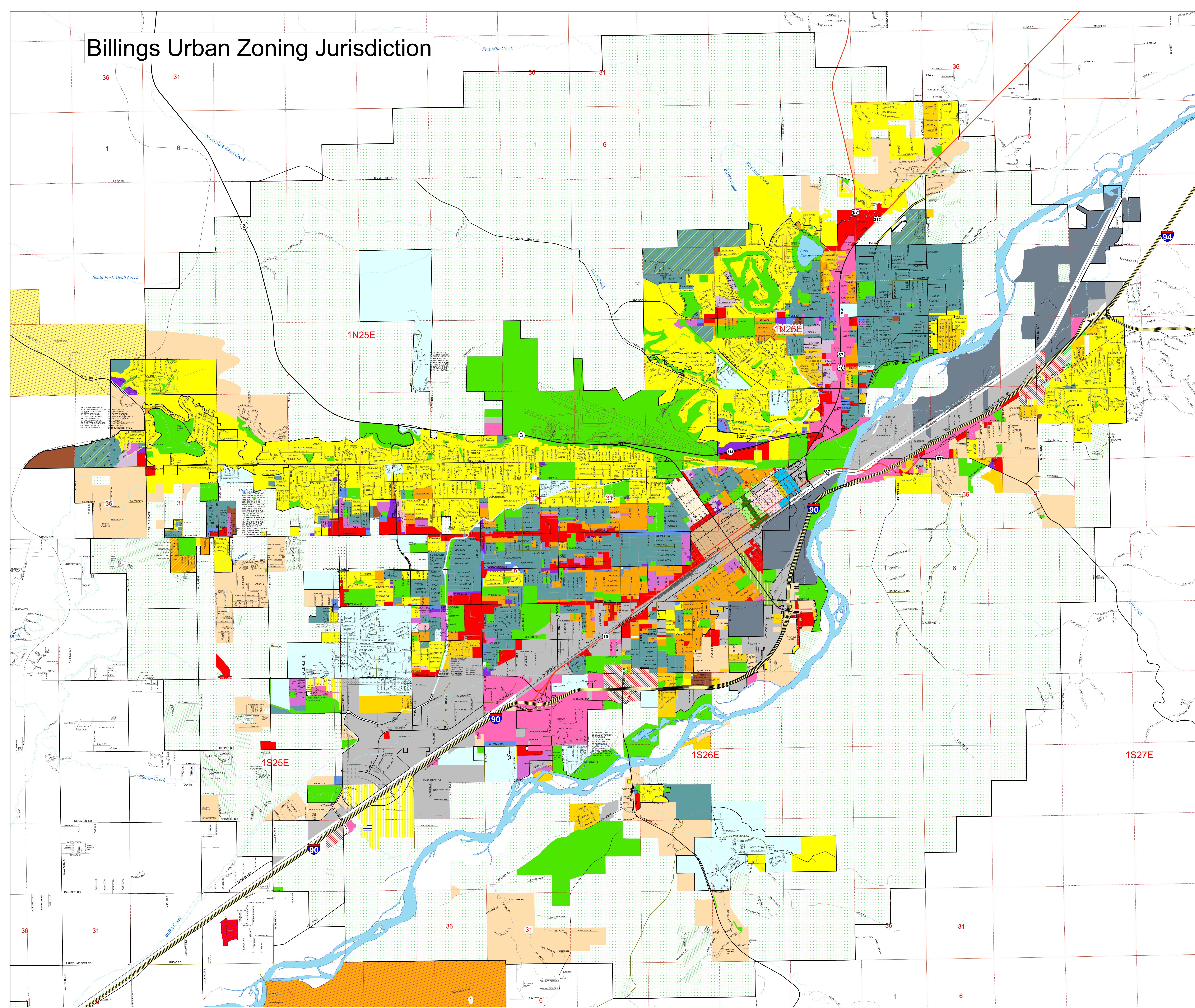
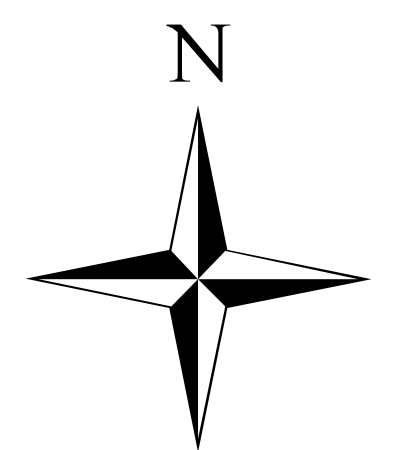


Billings Urban Zoning Jurisdiction



- Public
 - Residential 15000
 - Residential 9600
 - Residential 8000
 - Residential 7000
 - Residential 7000 Restricted
 - Residential 6000
 - Residential 6000 Restricted
 - Residential 5000
 - Residential Multi-Family
 - Residential Multi-Family Restricted
 - Residential Manufactured Home
 - Residential Professional
 - Neighborhood Commercial
 - Community Commercial
 - Central Business District
 - Planned Unit Development
 - Highway Commercial
 - Heavy Industrial
 - Controlled Industrial
 - Agricultural Open
 - Agricultural Suburban
 - Entryway Light Commercial
 - Entryway General Commercial
 - Entryway Mixed Use
 - Entryway Light Industrial
 - East Billings Railspur Village
 - East Billings Railspur Village Main St.
 - East Billings Central Works
 - East Billings 13th St. Main St.
 - East Billings Industrial Sanctuary
 - Medical Corridor Permit Zoning District
 - S. 27th Street Permit Zoning District
 - East Billings Parking District
 - Shiloh Corridor Overlay District
 - South Shiloh Corridor Overlay District
- Special Zoning Districts**
- 12
 - 14
 - 20
- CITY LIMITS**
- BILLINGS



6	5	4	3	2	1
7	8	9	10	11	12
18	17	16	15	14	13
19	20	21	22	23	24
30	29	28	27	26	25
31	32	33	34	35	36

This document is intended for informational purposes only and is not guaranteed to be accurate nor current.
 Date: 2/22/2018
 YELLOWSTONE COUNTY GIS
 m:\planning\zoning\biggs-zoning.mxd