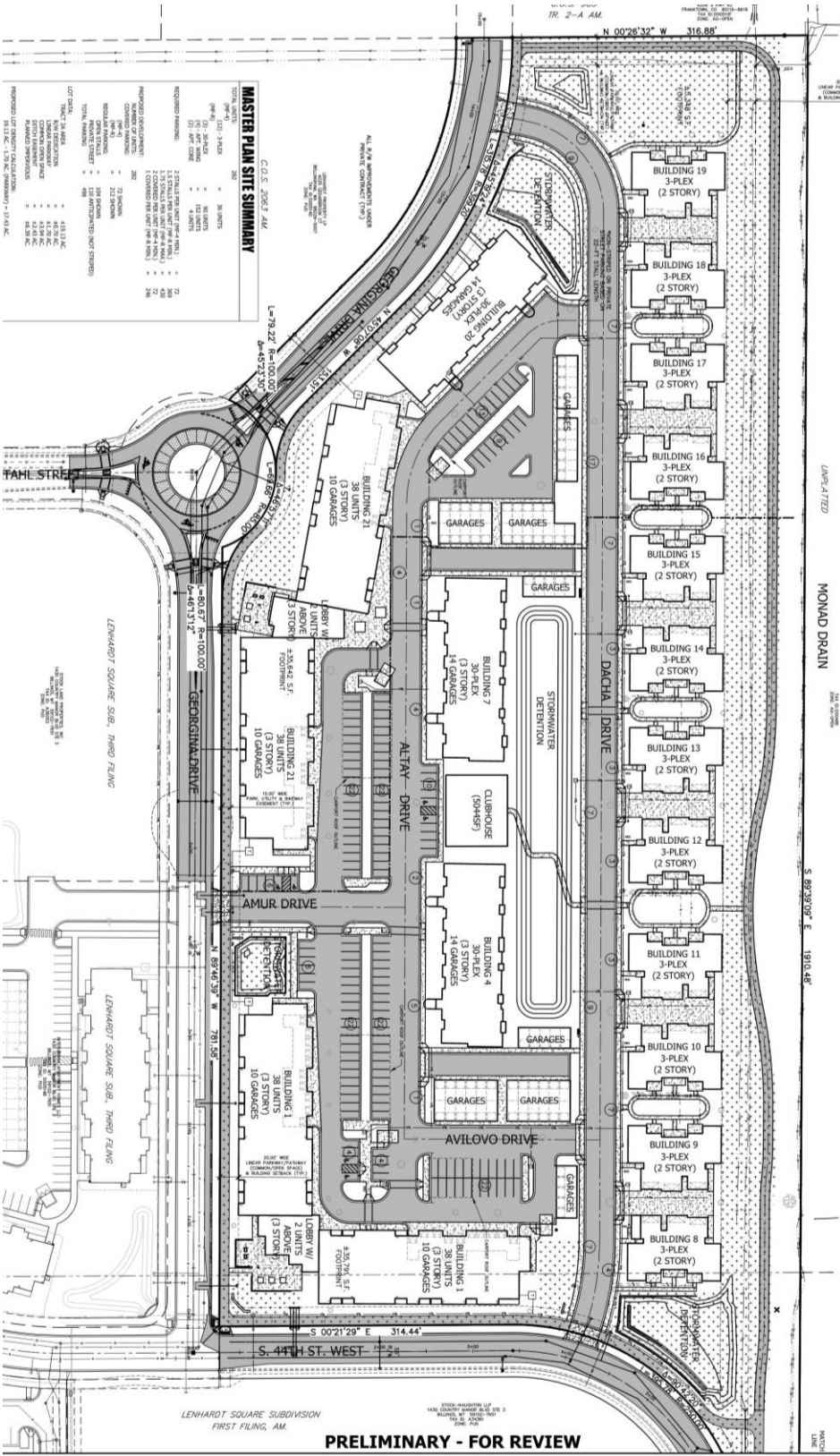




NOTE: THIS DEVELOPMENT SITE PLAN IS A PRELIMINARY DESIGN AND SHOULD BE CONSIDERED AS SUCH. THE DEVELOPER DOES NOT WARRANT THE ACCURACY OF ANY INFORMATION, MEASUREMENTS, OR DIMENSIONS SHOWN ON THIS PLAN. THE DEVELOPER SHALL BE RESPONSIBLE FOR OBTAINING ALL NECESSARY PERMITS AND APPROVALS FROM THE CITY OF DENVER AND THE COLORADO DEPARTMENT OF TRANSPORTATION AND CONSTRUCTION. THE DEVELOPER SHALL BE RESPONSIBLE FOR OBTAINING ALL NECESSARY PERMITS AND APPROVALS FROM THE CITY OF DENVER AND THE COLORADO DEPARTMENT OF TRANSPORTATION AND CONSTRUCTION. THE DEVELOPER SHALL BE RESPONSIBLE FOR OBTAINING ALL NECESSARY PERMITS AND APPROVALS FROM THE CITY OF DENVER AND THE COLORADO DEPARTMENT OF TRANSPORTATION AND CONSTRUCTION.



MASTER PLAN SITE SUMMARY

C.O.S. 2063 AM

REQUIREMENT	PROVIDED	REMARKS
1. TOTAL UNIT COUNT (PER PLAN)	1,000	
2. COVERED PARKING (PER PLAN)	1,000	
3. COVERED BIKE PARKING (PER PLAN)	200	
4. TOTAL BIKE PARKING (PER PLAN)	200	
5. TOTAL BIKE PARKING (PER PLAN)	200	
6. TOTAL BIKE PARKING (PER PLAN)	200	
7. TOTAL BIKE PARKING (PER PLAN)	200	
8. TOTAL BIKE PARKING (PER PLAN)	200	
9. TOTAL BIKE PARKING (PER PLAN)	200	
10. TOTAL BIKE PARKING (PER PLAN)	200	
11. TOTAL BIKE PARKING (PER PLAN)	200	
12. TOTAL BIKE PARKING (PER PLAN)	200	
13. TOTAL BIKE PARKING (PER PLAN)	200	
14. TOTAL BIKE PARKING (PER PLAN)	200	
15. TOTAL BIKE PARKING (PER PLAN)	200	
16. TOTAL BIKE PARKING (PER PLAN)	200	
17. TOTAL BIKE PARKING (PER PLAN)	200	
18. TOTAL BIKE PARKING (PER PLAN)	200	
19. TOTAL BIKE PARKING (PER PLAN)	200	
20. TOTAL BIKE PARKING (PER PLAN)	200	
21. TOTAL BIKE PARKING (PER PLAN)	200	
22. TOTAL BIKE PARKING (PER PLAN)	200	
23. TOTAL BIKE PARKING (PER PLAN)	200	
24. TOTAL BIKE PARKING (PER PLAN)	200	
25. TOTAL BIKE PARKING (PER PLAN)	200	
26. TOTAL BIKE PARKING (PER PLAN)	200	
27. TOTAL BIKE PARKING (PER PLAN)	200	
28. TOTAL BIKE PARKING (PER PLAN)	200	
29. TOTAL BIKE PARKING (PER PLAN)	200	
30. TOTAL BIKE PARKING (PER PLAN)	200	
31. TOTAL BIKE PARKING (PER PLAN)	200	
32. TOTAL BIKE PARKING (PER PLAN)	200	
33. TOTAL BIKE PARKING (PER PLAN)	200	
34. TOTAL BIKE PARKING (PER PLAN)	200	
35. TOTAL BIKE PARKING (PER PLAN)	200	
36. TOTAL BIKE PARKING (PER PLAN)	200	
37. TOTAL BIKE PARKING (PER PLAN)	200	
38. TOTAL BIKE PARKING (PER PLAN)	200	
39. TOTAL BIKE PARKING (PER PLAN)	200	
40. TOTAL BIKE PARKING (PER PLAN)	200	
41. TOTAL BIKE PARKING (PER PLAN)	200	
42. TOTAL BIKE PARKING (PER PLAN)	200	
43. TOTAL BIKE PARKING (PER PLAN)	200	
44. TOTAL BIKE PARKING (PER PLAN)	200	
45. TOTAL BIKE PARKING (PER PLAN)	200	
46. TOTAL BIKE PARKING (PER PLAN)	200	
47. TOTAL BIKE PARKING (PER PLAN)	200	
48. TOTAL BIKE PARKING (PER PLAN)	200	
49. TOTAL BIKE PARKING (PER PLAN)	200	
50. TOTAL BIKE PARKING (PER PLAN)	200	
51. TOTAL BIKE PARKING (PER PLAN)	200	
52. TOTAL BIKE PARKING (PER PLAN)	200	
53. TOTAL BIKE PARKING (PER PLAN)	200	
54. TOTAL BIKE PARKING (PER PLAN)	200	
55. TOTAL BIKE PARKING (PER PLAN)	200	
56. TOTAL BIKE PARKING (PER PLAN)	200	
57. TOTAL BIKE PARKING (PER PLAN)	200	
58. TOTAL BIKE PARKING (PER PLAN)	200	
59. TOTAL BIKE PARKING (PER PLAN)	200	
60. TOTAL BIKE PARKING (PER PLAN)	200	
61. TOTAL BIKE PARKING (PER PLAN)	200	
62. TOTAL BIKE PARKING (PER PLAN)	200	
63. TOTAL BIKE PARKING (PER PLAN)	200	
64. TOTAL BIKE PARKING (PER PLAN)	200	
65. TOTAL BIKE PARKING (PER PLAN)	200	
66. TOTAL BIKE PARKING (PER PLAN)	200	
67. TOTAL BIKE PARKING (PER PLAN)	200	
68. TOTAL BIKE PARKING (PER PLAN)	200	
69. TOTAL BIKE PARKING (PER PLAN)	200	
70. TOTAL BIKE PARKING (PER PLAN)	200	
71. TOTAL BIKE PARKING (PER PLAN)	200	
72. TOTAL BIKE PARKING (PER PLAN)	200	
73. TOTAL BIKE PARKING (PER PLAN)	200	
74. TOTAL BIKE PARKING (PER PLAN)	200	
75. TOTAL BIKE PARKING (PER PLAN)	200	
76. TOTAL BIKE PARKING (PER PLAN)	200	
77. TOTAL BIKE PARKING (PER PLAN)	200	
78. TOTAL BIKE PARKING (PER PLAN)	200	
79. TOTAL BIKE PARKING (PER PLAN)	200	
80. TOTAL BIKE PARKING (PER PLAN)	200	
81. TOTAL BIKE PARKING (PER PLAN)	200	
82. TOTAL BIKE PARKING (PER PLAN)	200	
83. TOTAL BIKE PARKING (PER PLAN)	200	
84. TOTAL BIKE PARKING (PER PLAN)	200	
85. TOTAL BIKE PARKING (PER PLAN)	200	
86. TOTAL BIKE PARKING (PER PLAN)	200	
87. TOTAL BIKE PARKING (PER PLAN)	200	
88. TOTAL BIKE PARKING (PER PLAN)	200	
89. TOTAL BIKE PARKING (PER PLAN)	200	
90. TOTAL BIKE PARKING (PER PLAN)	200	
91. TOTAL BIKE PARKING (PER PLAN)	200	
92. TOTAL BIKE PARKING (PER PLAN)	200	
93. TOTAL BIKE PARKING (PER PLAN)	200	
94. TOTAL BIKE PARKING (PER PLAN)	200	
95. TOTAL BIKE PARKING (PER PLAN)	200	
96. TOTAL BIKE PARKING (PER PLAN)	200	
97. TOTAL BIKE PARKING (PER PLAN)	200	
98. TOTAL BIKE PARKING (PER PLAN)	200	
99. TOTAL BIKE PARKING (PER PLAN)	200	
100. TOTAL BIKE PARKING (PER PLAN)	200	

PRELIMINARY - FOR REVIEW

LENHARDT SQUARE SUBDIVISION
FIRST FILING, AM.

