

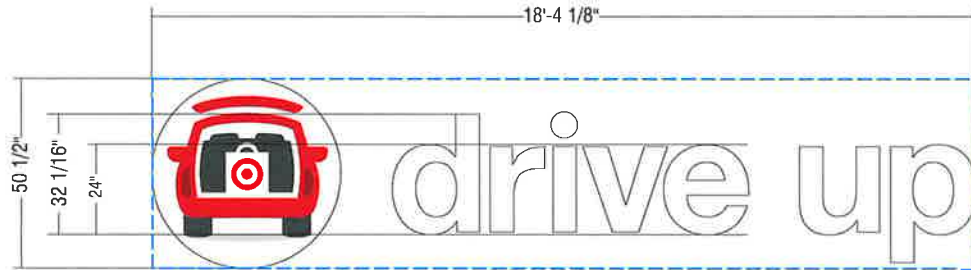
ACRYLIC FACED INT. ILLUM. "LOGO & LETTER" SET | LC-2 R

SCOPE OF WORK:
MANUFACTURE AND INSTALL CHANNEL LOGO & LETTERS

MATERIAL FINISH COLORS

 MF# 8257/HLG (FULL GLOSS)	 2793 (D Red Modified Acrylic (Alights or Equis))	 Red	 Soles Red LED
Retains	Face	Window/Retainer	Illumination

SIGN TYPE	A	B	C	D	E	F	RETAINER	AMPS CIRCUITS	SQ.FT.
LL120/60 LC-2 R	10'-0"	5'-0"	30'-8-1/2"	19'-5-1/8"	1'-8"	3'-4"	1"		307.1
LL108/54 LC-2 R	9'-0"	4'-6"	27'-7-5/8"	17'-5-7/8"	1'-6"	3'-0"	1"		248.7
LL96/48 LC-2 R	8'-0"	4'-0"	24'-6-3/4"	15'-6-1/2"	1'-4"	2'-8"	1"		196.5
LL84/42 LC-2 R	7'-0"	3'-6"	21'-6"	13'-7-1/4"	1'-2"	2'-4"	1"		150.5
LL72/36 LC-2 R	6'-0"	3'-0"	18'-5"	11'-8"	1'-0"	2'-0"	1"		110.5
LL60/30 LC-2 R	5'-0"	2'-6"	15'-4-1/4"	9'-8-5/8"	10"	1'-8"	1"		76.8
LL48/24 LC-2 R	4'-0"	2'-0"	12'-3-3/8"	7'-9-1/2"	8"	1'-4"	1"		49.1
LL36/18 LC-2 R	3'-0"	1'-6"	9'-2-1/2"	5'-10"	6"	1'-0"	1"		27.6
LL24/12 LC-2 R	2'-0"	1'-0"	6'-1-5/8"	3'-10-5/8"	4"	8"	1"		12.3



DU24W-LOGO ACRYLIC FACED INT. ILLUM. "LOGO & LETTER SET"

Scale: 3/8" = 1'-0"

77.1 SQ.FT.

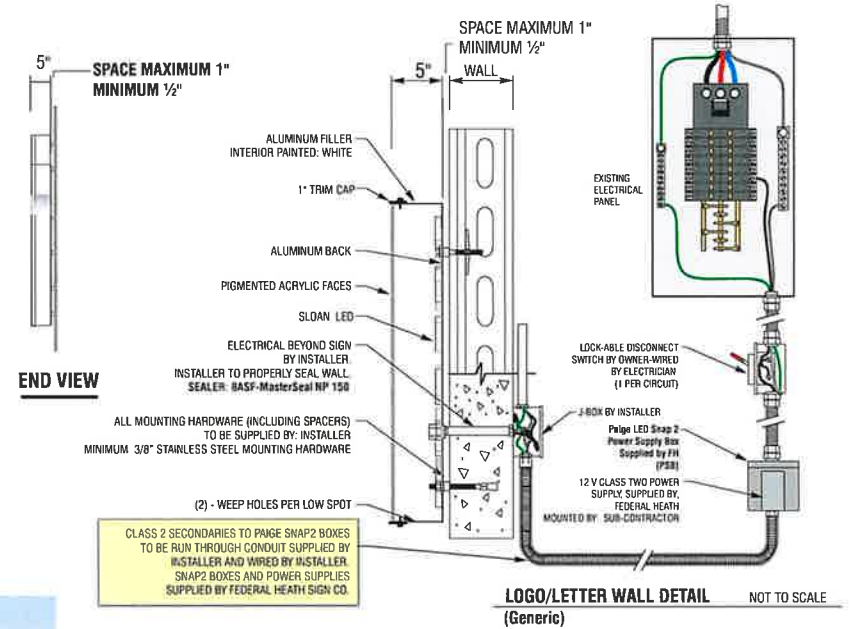
SCOPE OF WORK:

MANUFACTURE AND INSTALL CHANNEL LOGO & LETTERS



GENERIC (PARTIAL) ELEVATION NOTE: PLACEMENT CAN VARY

scale 3/32" = 1'-0"



MATERIAL FINISH COLORS (Letters & Logo)

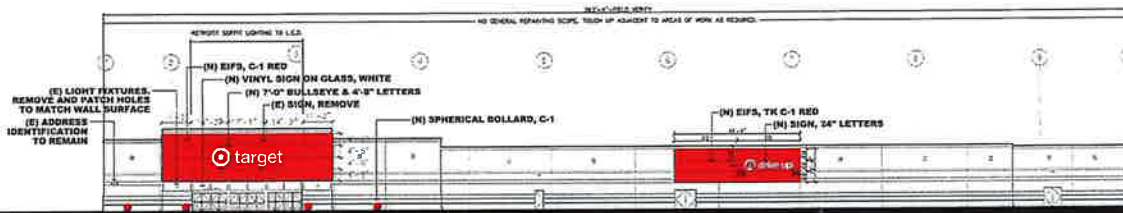
<input type="checkbox"/> GLOSS WHITE	<input type="checkbox"/> TRANSPARENT WHITE (SATUCLAS or Equiv)	<input type="checkbox"/> WHITE	<input type="checkbox"/> Silver White LED
Returns	Faces	Trim-Cap	Illumination

CAR LOGO COLORS

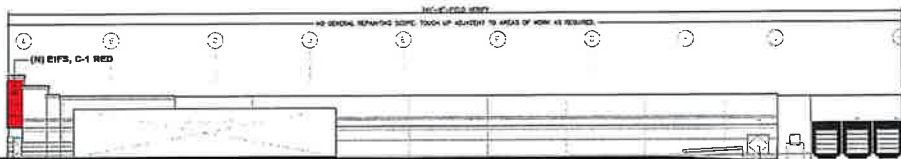
<input type="checkbox"/> Target Red PMS 186	<input type="checkbox"/> DARK RED PMS 188	<input type="checkbox"/> DARK GRAY PMS 425	<input type="checkbox"/> LIGHT GRAY PMS 421
---	---	--	---

COLOR KEY:

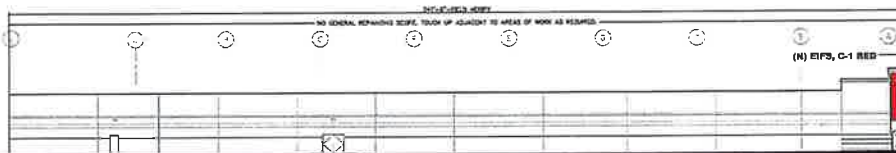
- (E) C-10 (BM #1037) MUSLIN
- (E) C-11 (BM# 1039) STONE HOUSE
- (E) C-12 (BM #HC-46) JACKSON TAN
- (E) C-14 (BM #2164-20) MARSH BROWN
- C-1 (TK #8010-01) RED



West Elevation



South Elevation



North Elevation



East Elevation

NOTE:

- * NO GENERAL REPAINTING SCOPE. TOUCH UP ADJACENT TO AREAS OF WORK AS REQUIRED
- *EXISTING COLORS ARE SHOWN FOR REFERENCE.
- *NEW SPHERICAL BOLLARDS AS INDICATED.
- *EXISTING STORE WALLS ARE PRIMARILY CMU
- *BEN-2 : MODERN, COLOR.....SILVER

GENERAL NOTE

- * AREA TO BE PAINTED STARTS AT TOP OF CURB OR REVEAL AND CONTINUES TO TOP OF PARAPET/FLASHING OR REVEAL. PAINT COLOR AND FINISH TRANSITIONS OCCUR AT EXISTING VERTICAL CONTROL JOINTS OR AT INSIDE BUILDING CORNERS, U.N.O.
- * ALL EXISTING WALL-MOUNTED ITEMS TO BE PAINTED TO MATCH ADJ. WALL SURFACE, U.N.O.
- * PATCH ALL VISIBLE HOLES FROM MOUNTING OF REMOVED SIGNS WITH LIKE MATERIALS. RESTORE WALL SURFACE TO ' LIKE NEW' APPEARANCE.

Proposed Elevations

April 29, 2022



West Elevation

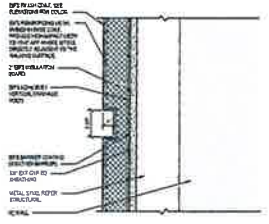
South Elevation

North Elevation

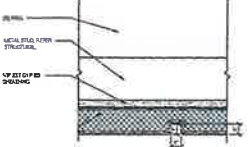
East Elevation

COLOR KEY:

- (E) C-10 (BM #1037) MUSLIN
- (E) C-11 (BM# 1039) STONE HOUSE
- (E) C-12 (BM #HC-46) JACKSON TAN
- (E) C-14 (BM #2164-20) MARSH BROWN
- C-1 (TK #8010-01) RED



TYP. EIFS SYSTEM HOR. REVEAL @ EIFS SECTION



VERT. REVEAL @ EIFS SECTION

NOTE:

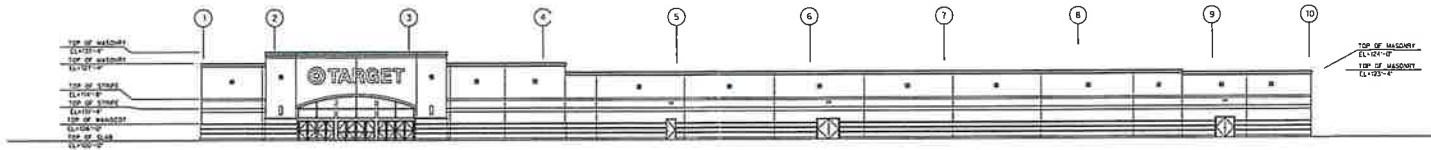
- *ALL SIGNAGE UNDER SEPARATE PERMIT
- *EIFS SPECIAL INSPECTION REQUIRED PER 2018 IBC SECTION 1705.16
- *NO GENERAL REPAIRING SCOPE. TOUCH UP ADJACENT TO AREAS OF WORK AS REQUIRED
- *EXISTING COLORS ARE SHOWN FOR REFERENCE.
- *NEW SPHERICAL BOLLARDS AS INDICATED.
- *EXISTING STORE WALLS ARE PRIMARILY CMU
- *BEN-2 : MODERN, COLOR.....SILVER

GENERAL NOTE

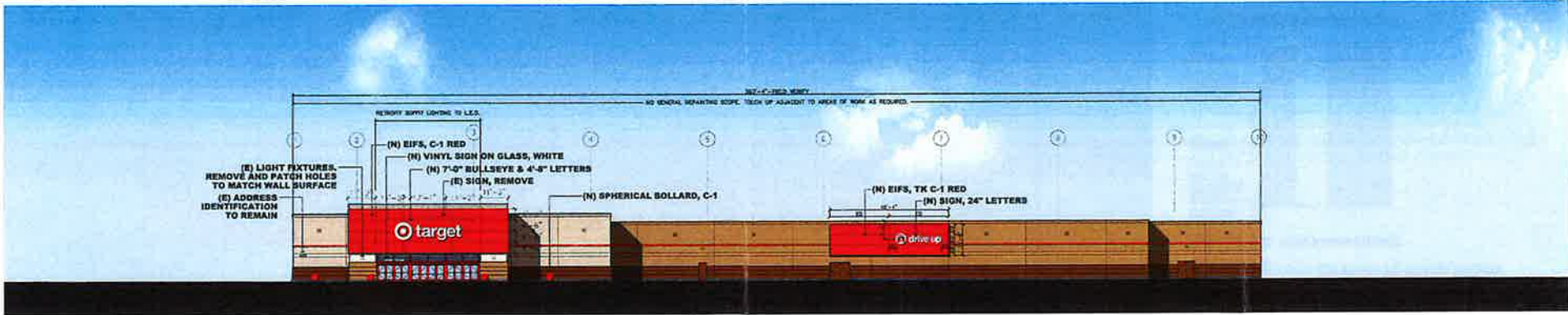
- * AREA TO BE PAINTED STARTS AT TOP OF CURB OR REVEAL AND CONTINUES TO TOP OF PARAPET/FLASHING OR REVEAL. PAINT COLOR AND FINISH TRANSITIONS OCCUR AT EXISTING VERTICAL CONTROL JOINTS OR AT INSIDE BUILDING CORNERS, U.N.O.
- * ALL EXISTING WALL-MOUNTED ITEMS TO BE PAINTED TO MATCH ADJ. WALL SURFACE, U.N.O.
- * PATCH ALL VISIBLE HOLES FROM MOUNTING OF REMOVED SIGNS WITH LIKE MATERIALS. RESTORE WALL SURFACE TO 'LIKE NEW' APPEARANCE.

Proposed Elevations

June 23, 2022



Existing Condition



Proposed Front Elevation