

PRELIMINARY PLAT OF AMENDED LOT 6A OF
 AMENDED PLAT OF LOTS 3A, 4, 5, 6, & 7, BLOCK 1,
ST. VINCENT HEALTHCARE SUBDIVISION

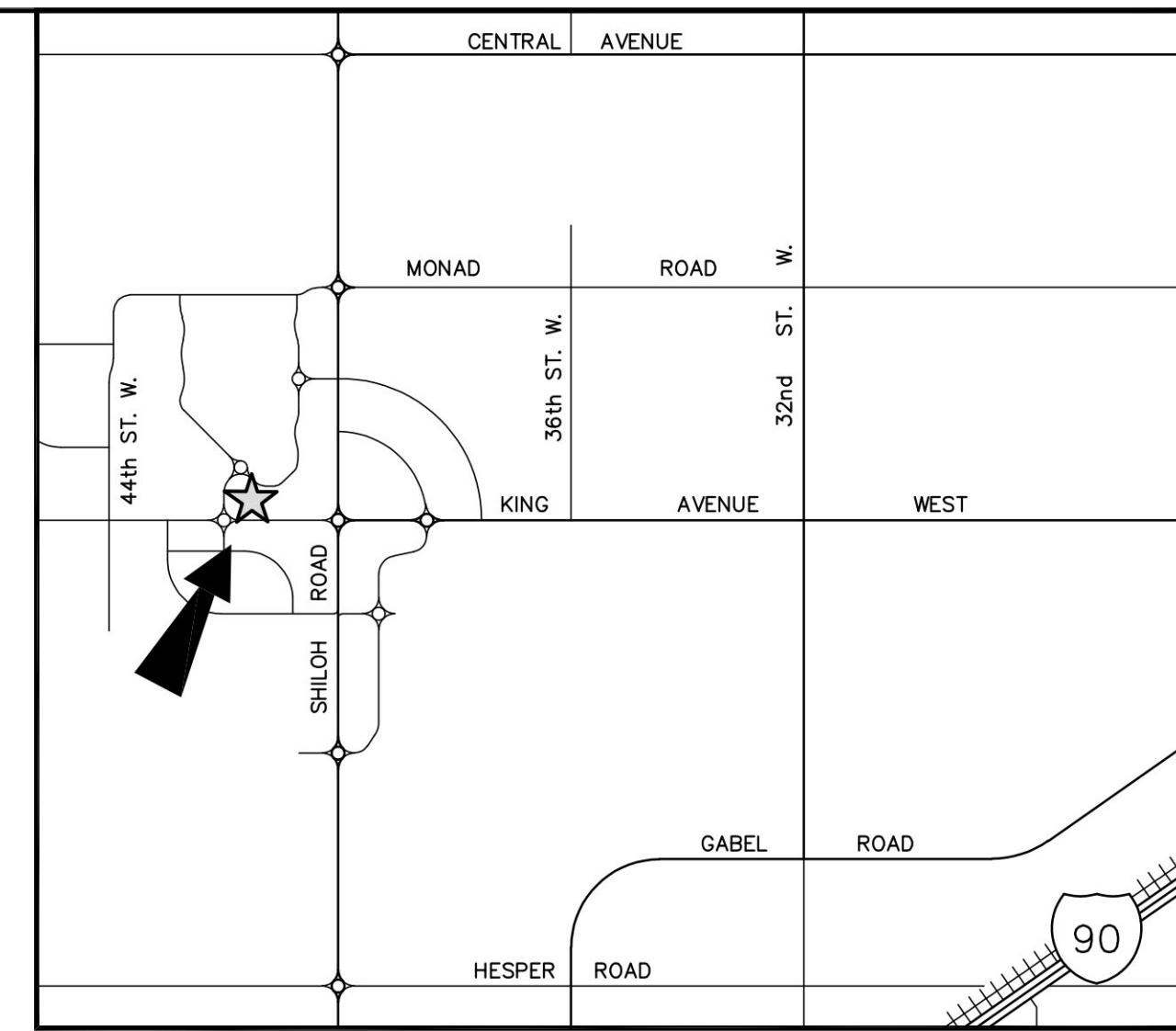
SITUATED IN THE SE1/4 OF SECTION 10, T. 1 S., R. 25 E., P.M.M.
 IN THE CITY OF BILLINGS, YELLOWSTONE COUNTY, MONTANA

PREPARED FOR : SCL HEALTH

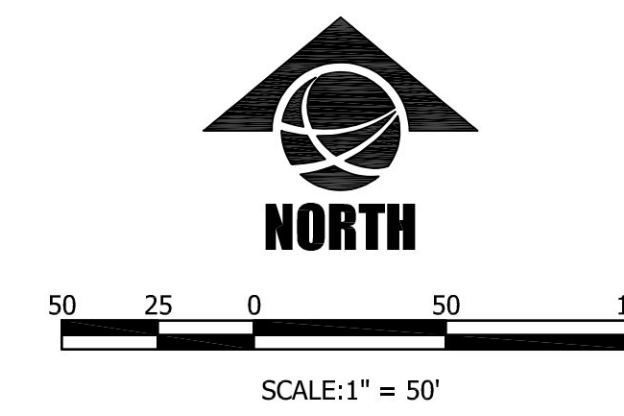
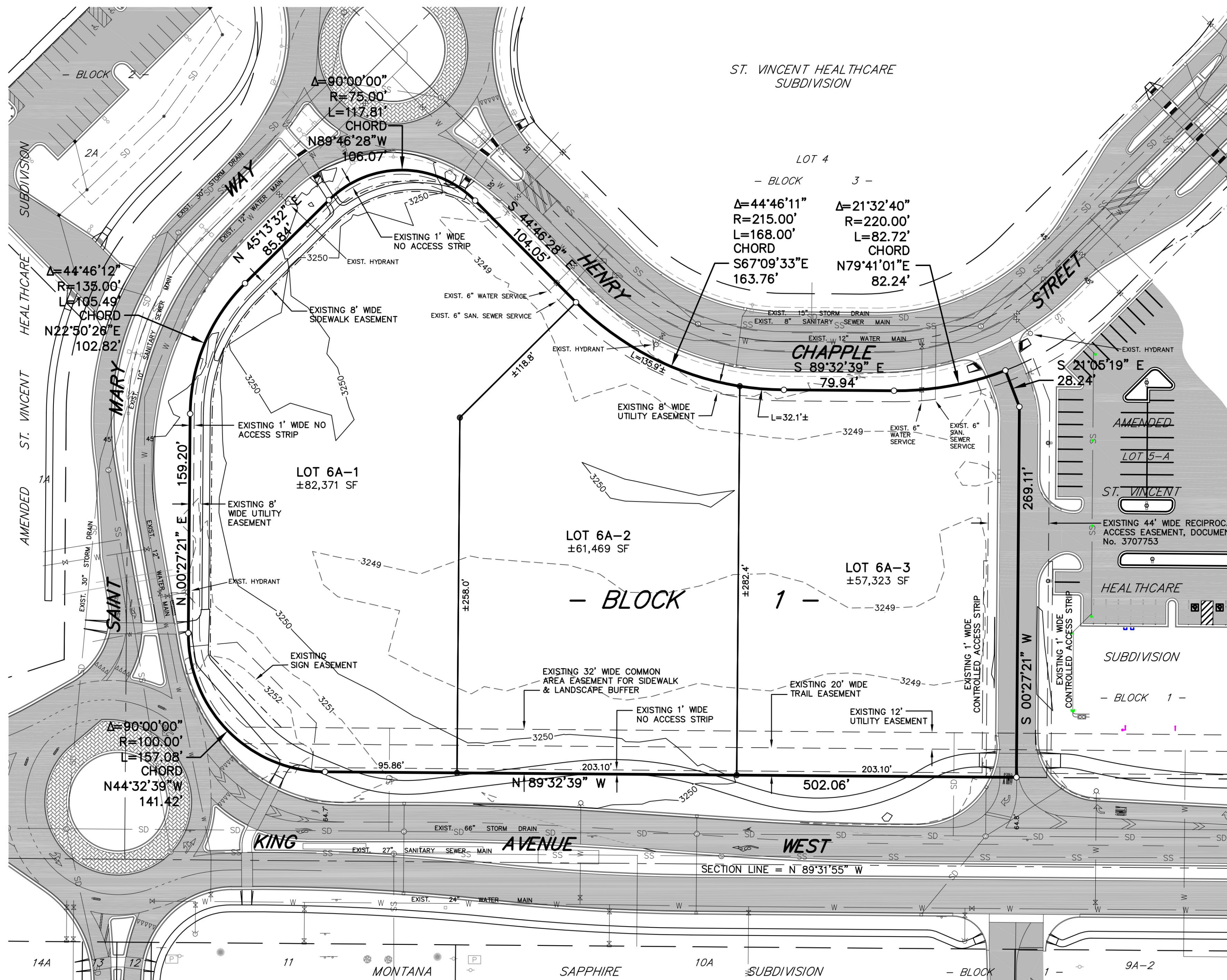
OCTOBER 2021

PREPARED BY : SANDERSON STEWART

BILLINGS, MONTANA



VICINITY MAP
 NOT TO SCALE



PLAT DATA

| | | |
|------------------------|---|-----------------------------|
| GROSS AREA | = | 201,163 SF |
| NET AREA | = | 201,163 SF |
| NUMBER OF LOTS | = | 3 |
| MINIMUM LOT SIZE | = | ±57,323 SF |
| MAXIMUM LOT SIZE | = | ±82,371 SF |
| LINEAL FEET OF STREETS | = | 0 |
| PARKLAND REQUIREMENT | = | NA |
| PARKLAND DEDICATION | = | NA |
| EXISTING ZONING | = | PUD |
| SURROUNDING ZONING: | | |
| NORTH | = | PUBLIC R/W |
| SOUTH | = | PUBLIC R/W |
| EAST | = | PUD |
| WEST | = | PUBLIC R/W |
| EXISTING LAND USE | = | VACANT |
| PROPOSED LAND USE | = | COMMERCIAL/ PROFESSIONAL |