

LEGAL DESCRIPTION

LOTS 1, BLOCKS 1 & 2, ZIMMERMAN HOME PLACE SUBDIVISION, 1ST FILING, IN S34, T01N, R25E

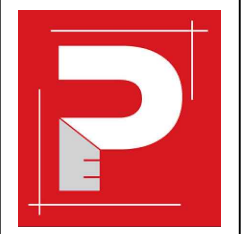
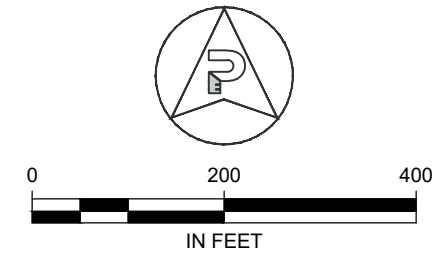
① BLOCK1, LOT 1: 770,833 SF
17.689 ACRES

② BLOCK 2, LOT 1: 826,507 SF
18.974 ACRES

ZONING LEGEND

- CMU1: COMMERCIAL MIXED USE 1
- NX1: MIXED RESIDENTIAL 1
- N2: MID-CENTURY RESIDENTIAL
- RR3: RURAL RESIDENTIAL 3
- P1: OPEN SPACE, PARKS, RECREATION
- NO: NEIGHBORHOOD OFFICE
- NX3: MIXED RESIDENTIAL 3
- NMU: NEIGHBORHOOD MIXED USE
- N3: SUBURBAN NEIGHBORHOOD

PROPOSED ZONE CHANGE BOUNDARY



HIGHLANDS APARTMENTS, LLC

BILLINGS, MT 59102

RDN DESIGNED BY		QUALITY ASSURANCE	
RDN DRAWN BY		RDN CHECKED BY	
12/2021 DATE		12/2021 DATE	
REV BY	DATE	CHKD BY	

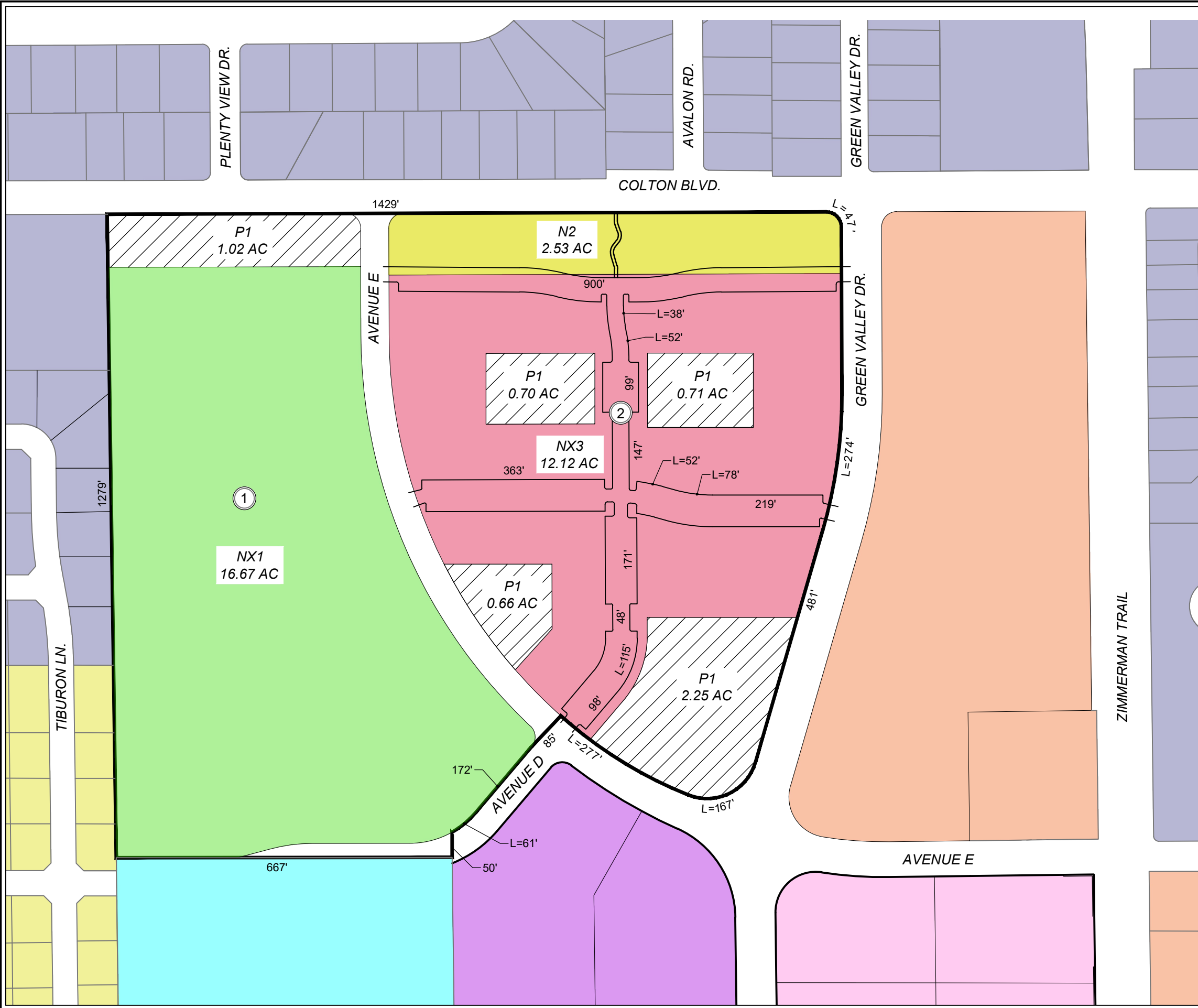
SHEET TITLE
ZIMMERMAN HOME PLACE
EXISTING ZONING MAP

PROJECT NUMBER
2021-173

SHEET NUMBER
1 OF 2

EXHIBIT
A
COPYRIGHT 2021 ©

1/11/2022 4:03:58 PM
 C:\Users\CraigDalton\Dropbox (PEC Billings)\Team Folder\Bearthooth Holdings\2021-173 ZHP Sub 3rd\CAD\DWG\Exhibits\Zone Change\ZHP3 Zone Map Proposed.dwg
 PE COLOR.CTB



LEGAL DESCRIPTION

LOTS 1, BLOCKS 1 & 2, ZIMMERMAN HOME PLACE SUBDIVISION, 1ST FILING, IN S34, T01N, R25E

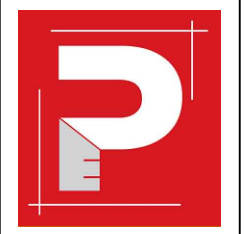
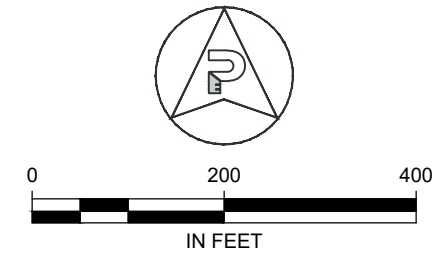
① BLOCK1, LOT 1: 770,833 SF
17.689 ACRES

② BLOCK 2, LOT 1: 826,507 SF
18.974 ACRES

ZONING LEGEND

- CMU1: COMMERCIAL MIXED USE 1
- NX1: MIXED RESIDENTIAL 1
- N2: MID-CENTURY RESIDENTIAL
- RR3: RURAL RESIDENTIAL 3
- P1: OPEN SPACE, PARKS, RECREATION
- NO: NEIGHBORHOOD OFFICE
- NX3: MIXED RESIDENTIAL 3
- NMU: NEIGHBORHOOD MIXED USE
- N3: SUBURBAN NEIGHBORHOOD

PROPOSED ZONE CHANGE BOUNDARY



HIGHLANDERS APARTMENTS, LLC

BILLINGS, MT 59102

RDN DESIGNED BY	QUALITY ASSURANCE	
RDN DRAWN BY	RDN CHECKED BY	
12/2021 DATE	12/2021 DATE	
REV BY	DATE	CHKD BY

SHEET TITLE
**ZIMMERMAN HOME PLACE
 PROPOSED ZONING MAP**

PROJECT NUMBER 2021-173
SHEET NUMBER 2 OF 2
EXHIBIT B
COPYRIGHT 2021 ©