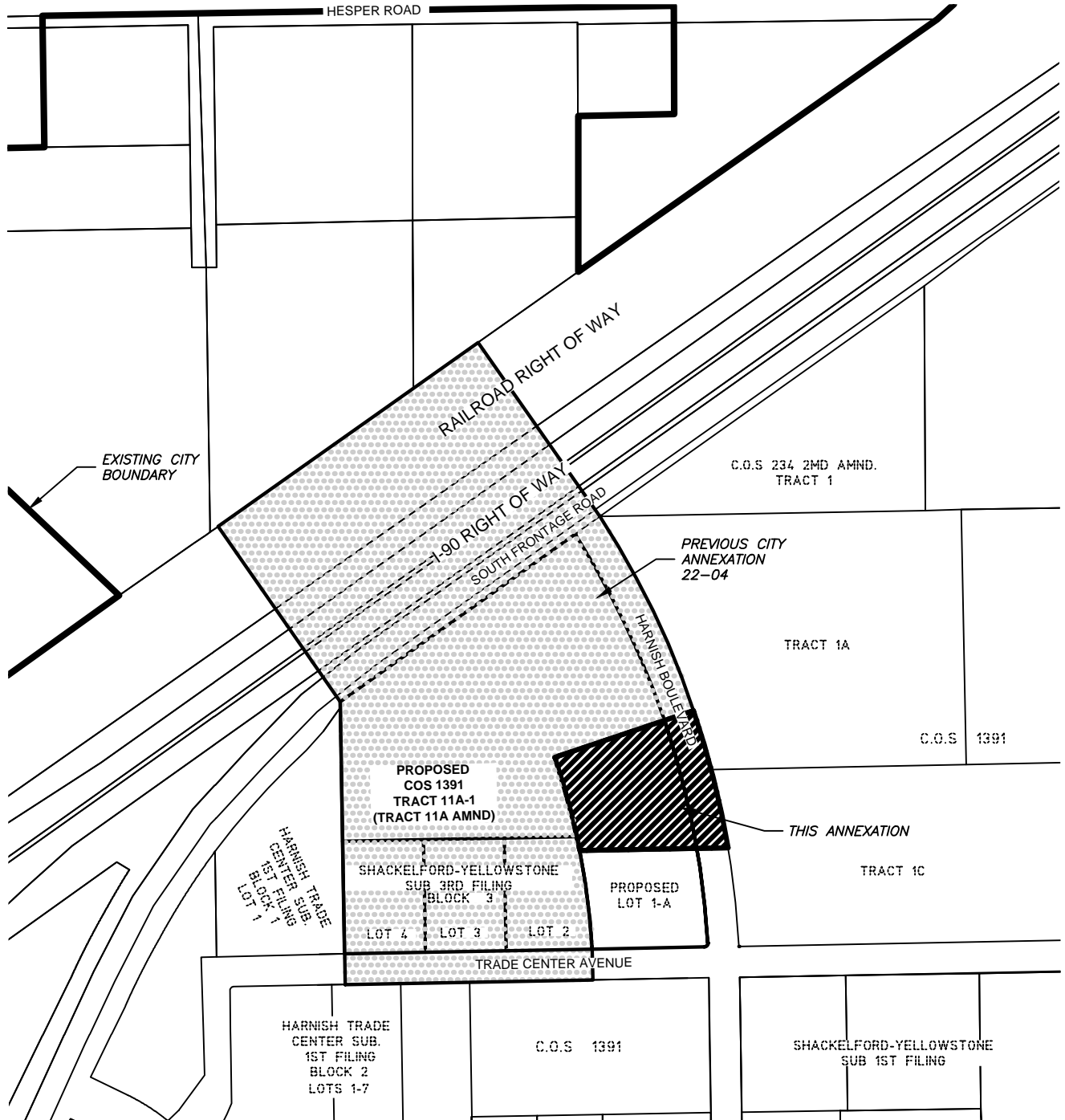


EXHIBIT 'A'

DEPICTING THE ANNEXATION OF A PORTION OF LOT 1 OF SCHACKELFORD-YELLOWSTONE SUB. 3RD FILING, LOCATED IN THE NW1/4 OF SEC. 24, T.1S., R.25E., P.M.M., YELLOWSTONE COUNTY, MONTANA



PREPARED BY:



175 N. 27TH. ST. STE. 1312 PH: 406.248.9000
 BILLINGS, MT 59101 FAX: 406.721.5224
 www.imegcorp.com
 IMEG PROJECT NO. 21007616



BASIS OF BEARING
 MONTANA STATE PLANE - ZONE 2500
 GROUND (TRUE) DISTANCES
 GRID NORTH

