

CONCEPT OF AMENDED ST. VINCENT HEALTHCARE SUBDIVISION

BEING A VACATION OF LOTS 1A & 3-8 OF BLOCKS 2, LOTS 2-8 OF BLOCKS 3, LOTS 1 & 2A1 OF BLOCK 4, AND A PORTION OF MARILLAC STREET RIGHT-OF-WAY, ALL WITHIN ST. VINCENT HEALTHCARE SUBDIVISION SITUATED IN THE SE1/4 OF SECTION 10, T. 1 S., R. 25 E., P.M.M., IN THE CITY OF BILLINGS, YELLOWSTONE COUNTY, MONTANA

PREPARED FOR : SCL HEALTH-MONTANA

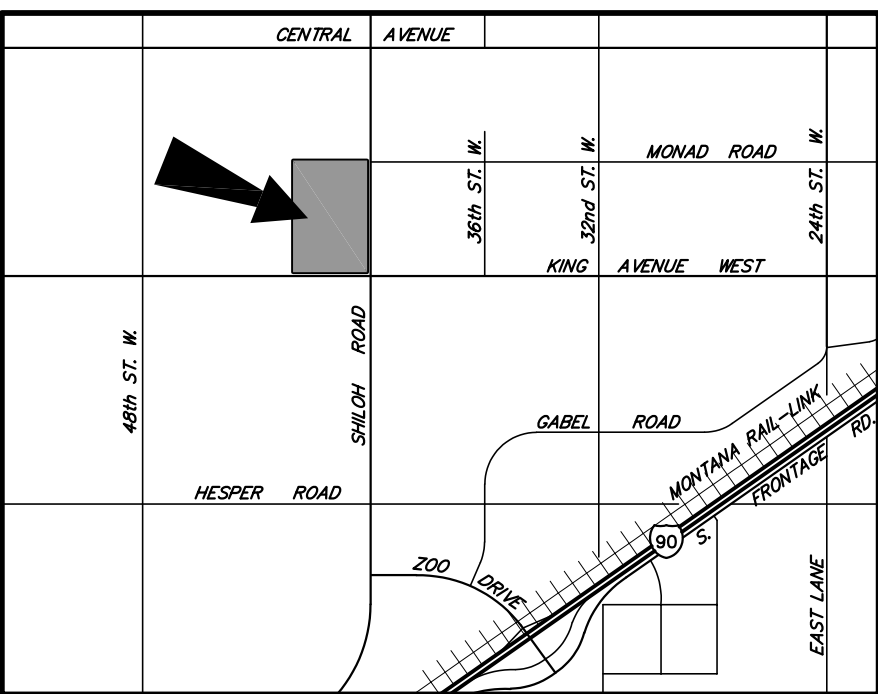
JUNE, 2022

PREPARED BY : SANDERSON STEWART

BILLINGS, MONTANA

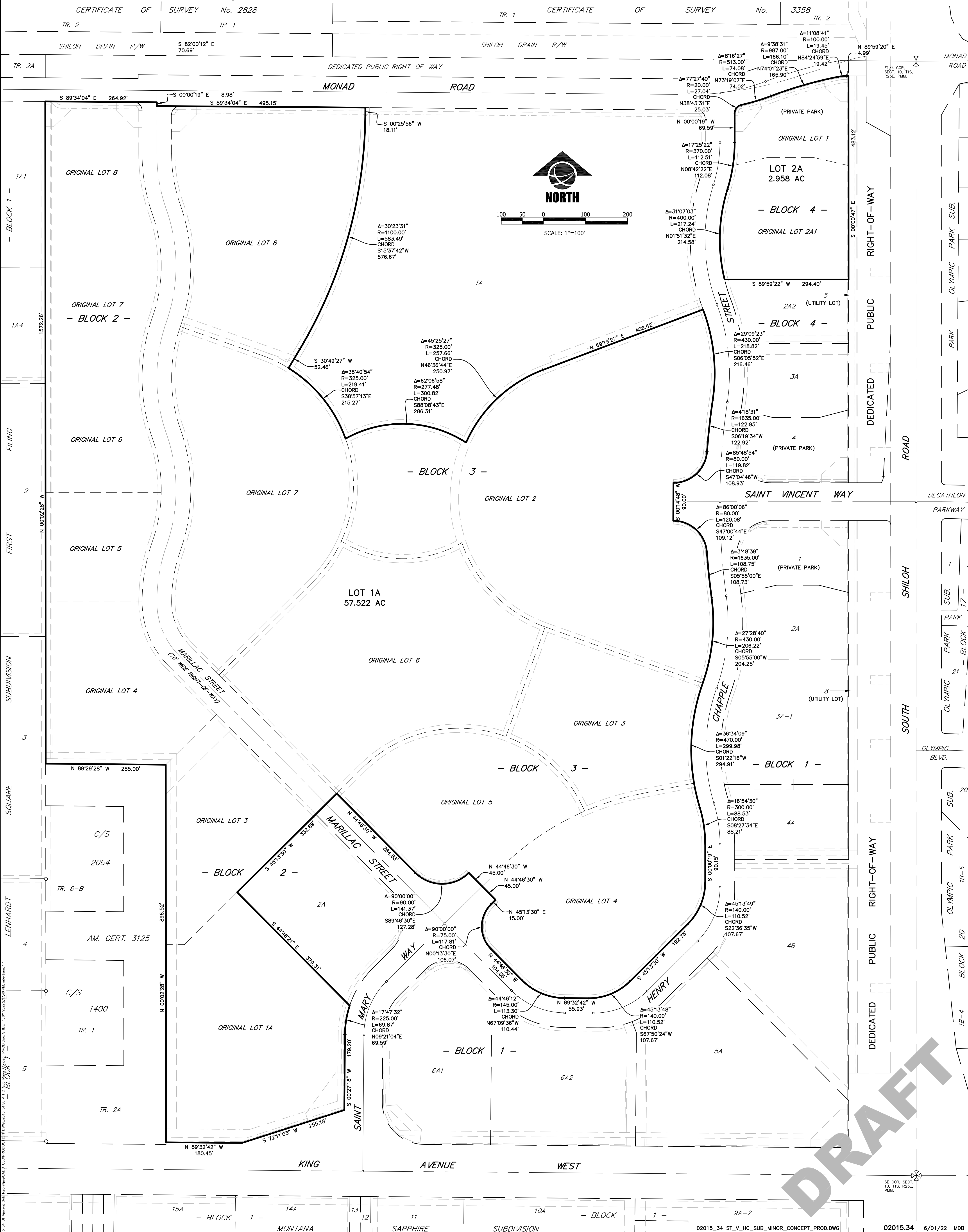
PLAT DATA

GROSS AREA	= 60.444 ACRES
NET AREA	= ±60.480 ACRES
NUMBER OF LOTS	= 2
MINIMUM LOT SIZE	= ±2.958 ACRES
MAXIMUM LOT SIZE	= ±57.522 ACRES
LINEAL FEET OF STREETS	= NA
EXISTING ZONING	= PLANNED DEVELOPMENT
SURROUNDING ZONING:	
NORTH	= PUBLIC, CIVIC & INSTITUTIONS
SOUTH	= CORRIDOR MIXED USE 2
EAST	= PLANNED DEVELOPMENT
WEST	= PLANNED DEVELOPMENT
EXISTING LAND USE	
PROPOSED LAND USE	= PROFESSIONAL & BUSINESS



VICINITY MAP

NOT TO SCALE



DRAFT