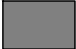


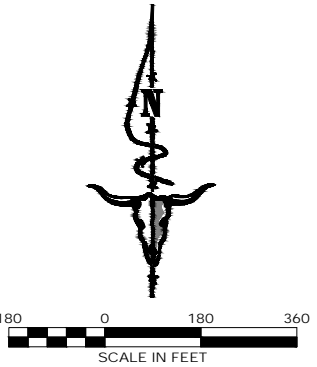
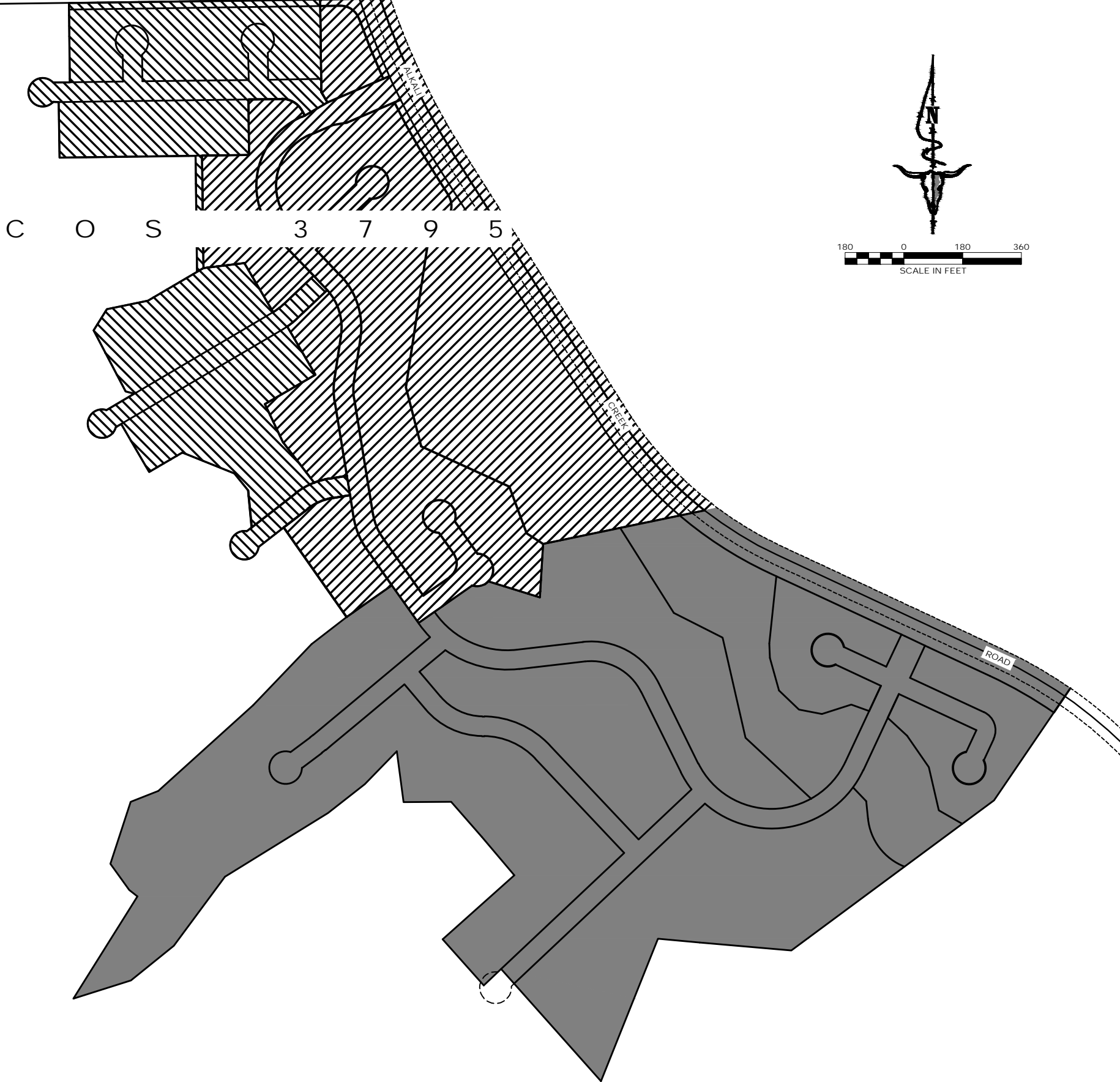


Exhibit B

- PHASE 1 
- PHASE 2 
- PHASE 3 



IMEG
 1817 SOUTH AVE. W. STE. A PH. 406.721.0142
 MISSOULA, MT FAX. 406.721.5224
 www.imegcorp.com

REVISIONS	DATE

DESIGNED: *KK*
 DRAFTED: *GW*
 CHECKED: *KK*
 DATE: *NOV. 2021*

LOCATION: COS 3795
 SECT. 19, T01N, R26E, P.M.M.
 BILLINGS, MONTANA
 YELLOWSTONE COUNTY
 PREPARED FOR: DAVID MITCHELL

PROJECT NAME: THE TIMBERS SUBDIVISION
 PROJECT NO.: 20006040
 SHEET TITLE: ZONE EXHIBIT
 SHEET: 1 OF 1