

PLAT OF AMENDED ST. VINCENT HEALTHCARE SUBDIVISION

BEING A VACATION OF LOTS 1A & 3-8 OF BLOCK 2, LOTS 2-8 OF BLOCK 3, LOTS 1 & 2A1 OF BLOCK 4, AND A PORTION OF VACATED MARILLAC STREET RIGHT-OF-WAY (PER RESOLUTION 22-1060, DOC. #4027755), ALL WITHIN ST. VINCENT HEALTHCARE SUBDIVISION, SITUATED IN THE SE1/4 OF SECTION 10, T. 1 S., R. 25 E., P.M.M., IN THE CITY OF BILLINGS, YELLOWSTONE COUNTY, MONTANA

PREPARED FOR : SCL HEALTH-MONTANA
PREPARED BY : SANDERSON STEWART

OCTOBER, 2022
BILLINGS, MONTANA

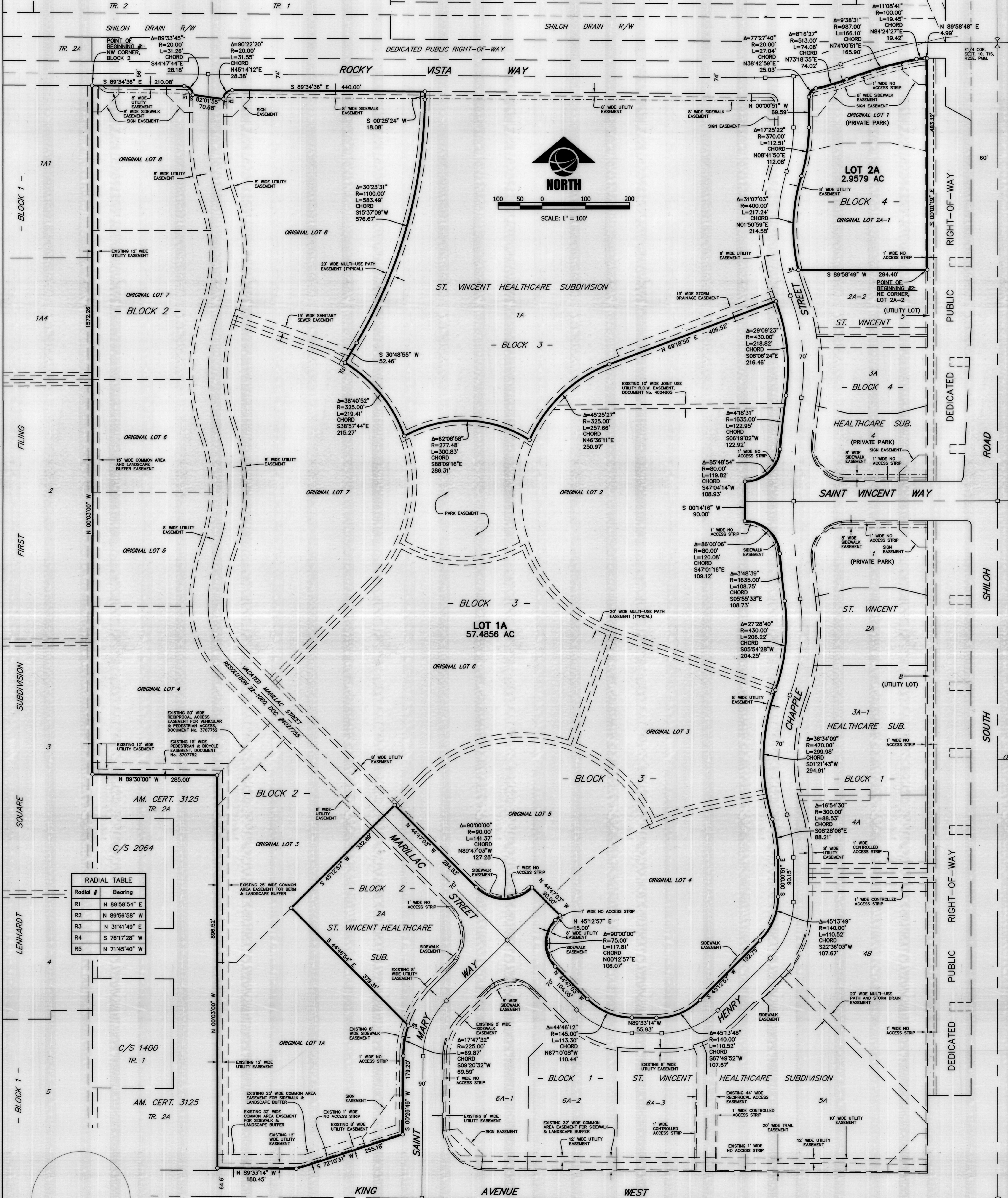
BASIS OF BEARING: THE BASIS OF BEARINGS FOR THIS SURVEY HAS BEEN DERIVED FROM GPS OBSERVATIONS AND IS BASED ON A NAD 83, LAMBERT CONFORMAL CONIC, SINGLE PARALLEL, LOW DISTORTION PROJECTION FOR THE CITY OF BILLINGS, HAVING A POINT OF ORIGIN AT 45°47'00"N LATITUDE AND 108°25'00"W LONGITUDE WITH A SCALE FACTOR OF 1.0001515. THE GRID TO GROUND COMBINED SCALE FACTOR AT THE NW CORNER OF BLOCK 2 (P.O.B. #1) IS 0.9999981; THE CONVERGENCE ANGLE IS -0°08'59". DISTANCES ARE INTERNATIONAL FEET. FOR THIS SURVEY, GRID DISTANCE IS ESSENTIALLY EQUAL TO GROUND DISTANCE.

FOUND SURVEY MONUMENT, REBAR WITH YELLOW CAP MARKED "SANDERSON STEWART", OR AS NOTED

NOTE: ALL CURVES ARE TANGENT AND ALL PROPERTY LINES INTERSECTING CURVES ARE RADIAL UNLESS OTHERWISE NOTED.

CERTIFICATE OF SURVEY No. 2828

CERTIFICATE OF SURVEY No. 3358



Radial #	Bearing
R1	N 89°58'54" E
R2	N 89°56'58" W
R3	N 31°41'49" E
R4	S 76°17'28" W
R5	N 71°45'40" W

RESERVED FOR CLERK AND REORDER