

# 2022 - 2023 Community Health Needs Assessment (CHNA)

---

September 6, 2022



*We acknowledge that this discussion is taking place on the land of tribal nations whose time in the area ranged from over tens of thousands years to hundreds of years. These tribes included the Assiniboine (Nakoda), Blackfeet (Amskapi Pikuni), Northern Cheyenne (Tsetsêhesêstâhase/So'taahe), Crow (Apsaalooke), Gros Ventre (A'aninin), and Sioux (Dakota/Lakota).*

*We recognize their connection to this region and give thanks for the opportunity to provide public health services on their traditional homeland.*

# Very Brief Community Health Needs Assessment Overview

---



# History of Collaboration

---

- **Community Health Needs Assessments (CHNA)**
- Healthy By Design Coalition
- Shared Community Health Improvement Plan (CHIP)
- Chronic Pain Task Force
- Community Crisis Center
- Community Flu Shot Challenge
- Cover the Uninsured Week
- Health Communications Team
- Health Insurance Marketplace Outreach & Enrollment
- Legislative Advocacy
- Medication Assistance Programs
- Unified Health Command
- Montana Family Medicine Residency (MFMR)





Shared County Community Health Needs Assessment (CHNA)



Shared County Community Health Improvement Plan (CHIP)



Focus: Innovative *policy, systems, and built environment* opportunities

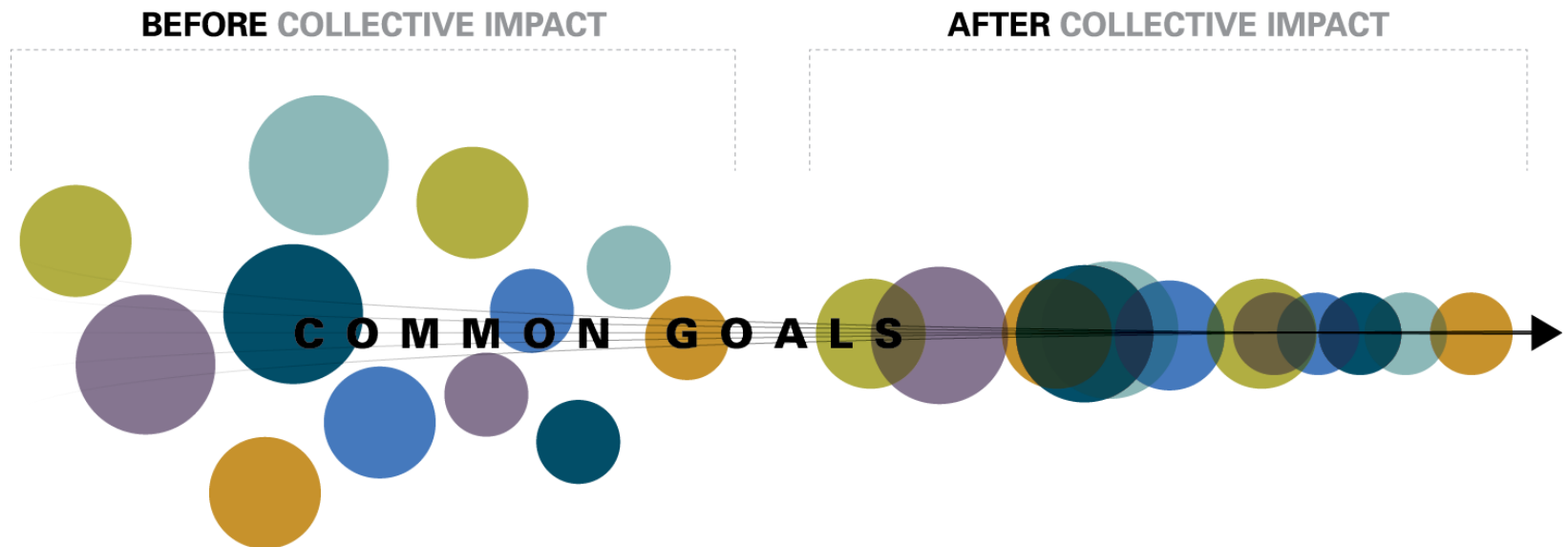
# Why complete an assessment?

---

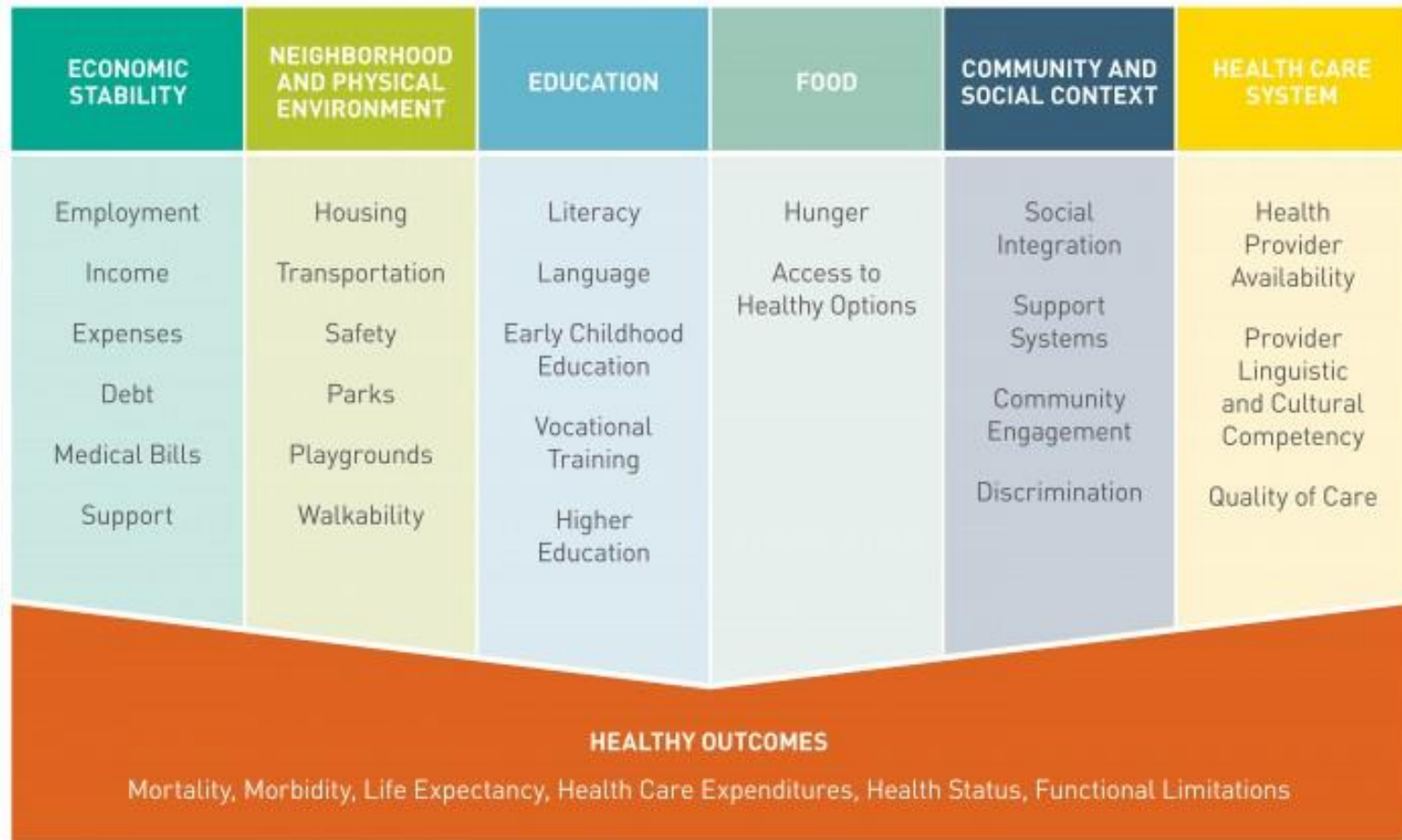
- Provides **comprehensive** information about the community's **current** health status, needs, and issues
- Opportunity to **engage broader community** in assessing and addressing community health
- Justifies how and where **resources** should be allocated to best meet community needs
- Supports the development of a **coordinated** community health improvement plan



# Leveraging our Collective Impact



# What contributes to overall health?



Source: Kaiser Permanente, 2018.



## Equality



## Equity



© 2017 Robert Wood Johnson Foundation.  
May be reproduced with attribution.



# Community Informed

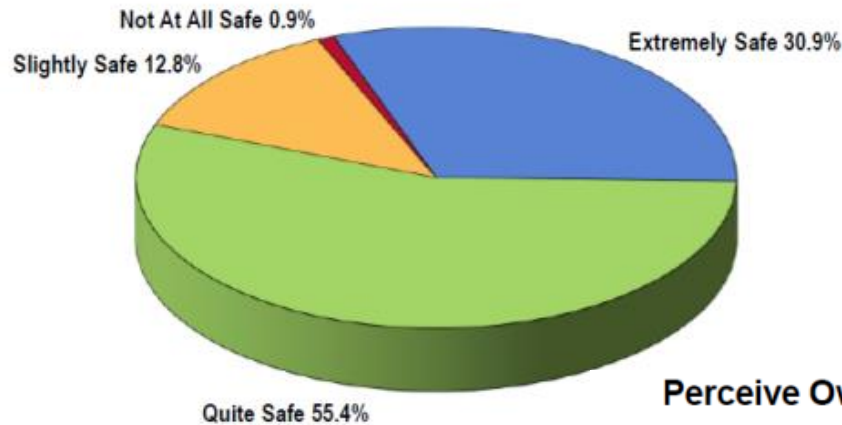
---

- CHNA Work Team
- CHNA Advisory Committee
- Population Survey Respondents
- Key Informant Survey Respondents
- Forum Attendees
- Resilient Yellowstone project partners



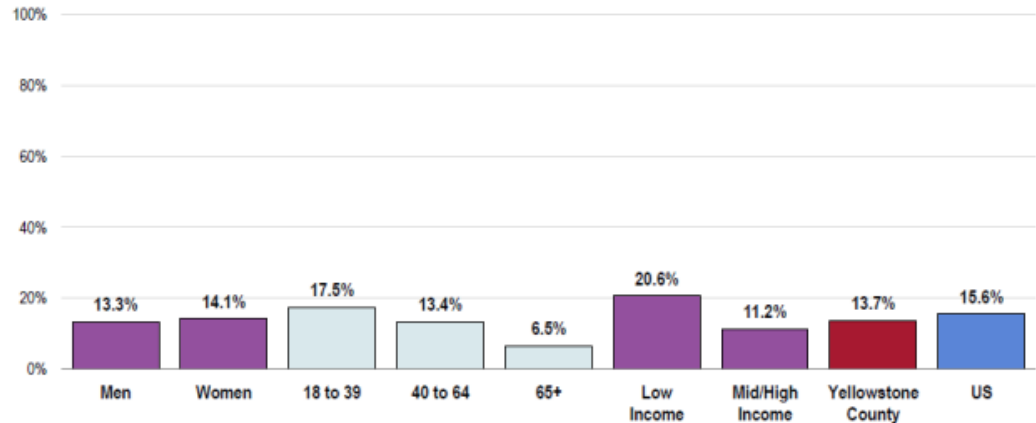
# Areas of focus- Stay tuned for 2022/2023 data

**Perceived Safety of Own Neighborhood**  
(Yellowstone County, 2020)



Sources: ● 2020 PRC Community Health Survey, PRC, Inc. [Item 303]  
Notes: ● Asked of all respondents.

**Perceive Own Neighborhood as “Slightly” or “Not At All” Safe**  
(Yellowstone County, 2020)



Sources: ● 2020 PRC Community Health Survey, PRC, Inc. [Item 303]  
● 2017 PRC National Health Survey, PRC, Inc.  
Notes: ● Asked of all respondents.  
● Income categories reflect respondent's household income as a ratio to the federal poverty level (FPL) for their household size. "Low Income" includes households with incomes up to 200% of the federal poverty level; "Mid/High Income" includes households with incomes at 200% or more of the federal poverty level.

# Areas of focus- Stay tunes for 2022/2023 data

---

## New Questions added this cycle:

- Since the beginning of the pandemic, would you say your mental or physical health has..
- Has there been a time since the start of the pandemic when you needed medical care or had a medical appointment scheduled, but you chose to avoid receiving care due to concerns about coronavirus?
- I am confident in my ability to manage stress and work through life's difficulties.
- I feel that my community is a welcoming place for people of all races and ethnicities.
- Other questions related to perceived discrimination

# Coming Up- Community Forum!

---

- Join us!
  - When: Friday, November 18<sup>th</sup> (Lunch, exact time TBD)
  - Where: Billings Hotel and Convention Center
  - What: PRC data presentation, lunch, discussion, prioritization from attendees



Image by Freepik at flaticon.com

# Thank you!



Website: [www.hbdyc.org](http://www.hbdyc.org)



Facebook: @HBDYellowstone

Contact:

Eden Sowards, CHES

[eden@hbdyc.org](mailto:eden@hbdyc.org) 247.3223

Community Health Improvement Manager