

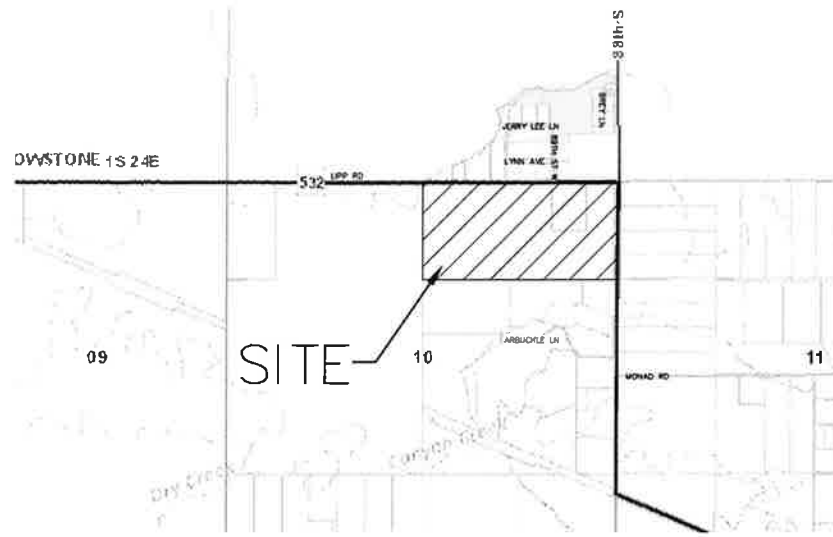
# LIPP SUBDIVISION, 2ND FILING

AMENDING LOTS 1 & 2 LIPP SUBDIVISION, 1ST FILING  
 SITUATED IN THE N 1/2, NE 1/4, SECTION 10, T. 1 S., R. 24 E., P.M.M.  
 YELLOWSTONE COUNTY, MONTANA

PREPARED FOR: JERRY L BREY  
 SURVEYOR:  
 ENGINEER: BLUELINE ENGINEERING LLC  
 MARCH, 2022  
 BILLINGS, MONTANA

### SUBDIVISION DETAILS:

GROSS AREA	=	75.549 ACRES
NET AREA	=	73.093 ACRES
ROAD AREA	=	2.456 ACRES
NUMBER OF LOTS	=	13
MINIMUM LOT SIZE	=	1.000 ACRES
MAXIMUM LOT SIZE	=	41.875 ACRES
EXISTING ZONING	=	NONE
SURROUNDING ZONING	=	NONE
NORTH	=	NONE
SOUTH	=	NONE
EAST	=	NONE
WEST	=	NONE
EXISTING LAND USE	=	COMMERCIAL
PROPOSED LAND USE	=	COMMERCIAL



VICINITY MAP  
 NOT TO SCALE

