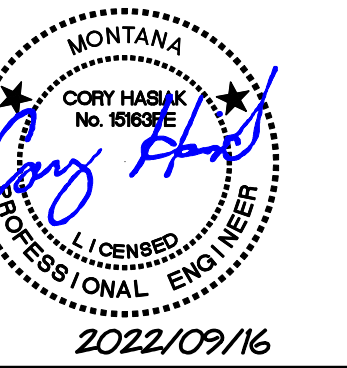


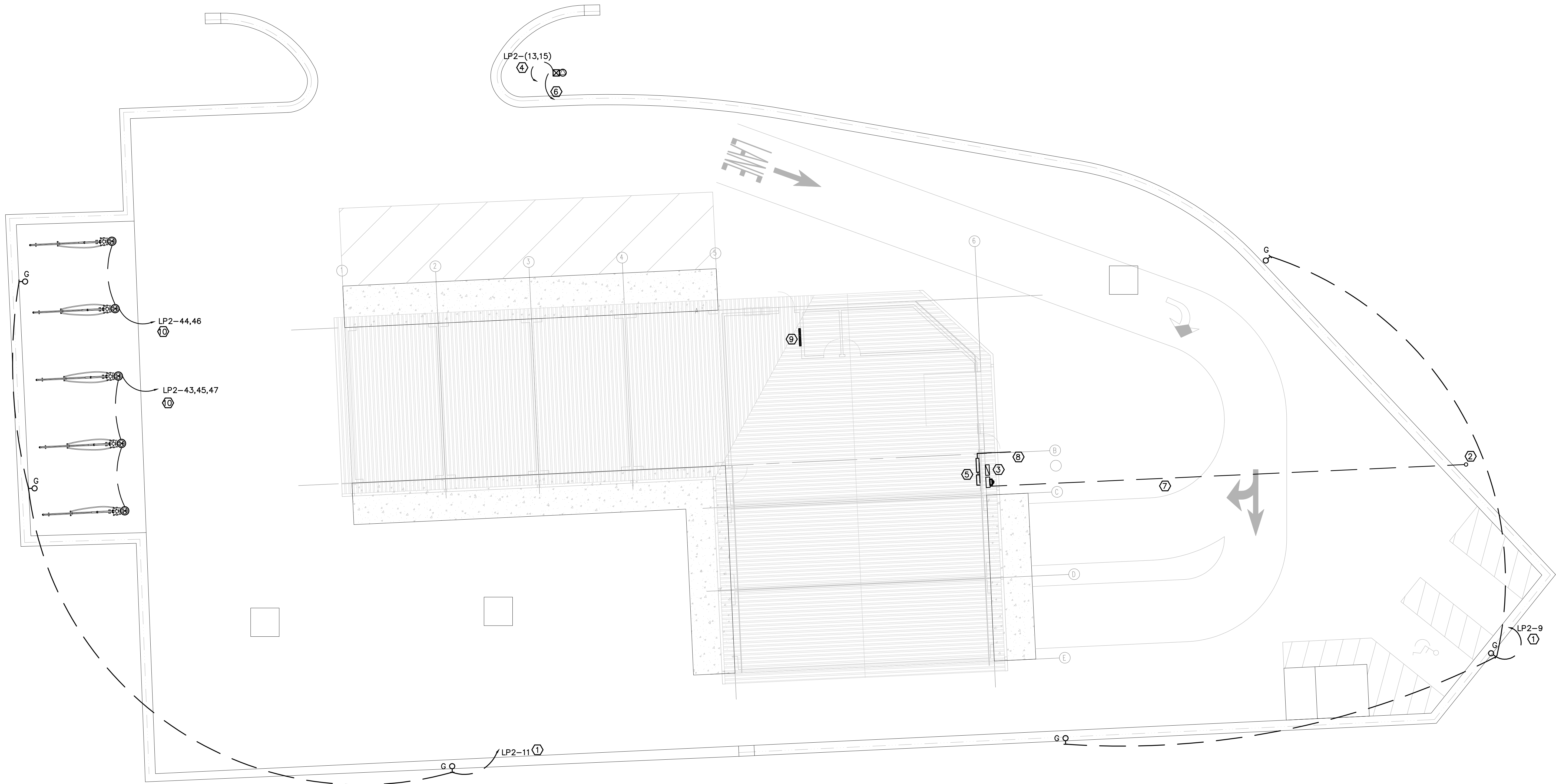


AT ARCHITECTURE



# BLUECREEK GARWASH

BILLINGS, MT



### NOTES:

○ AS DESIGNATED IN PLAN

- ROUTE 2#10+#10G IN 1" CONDUIT TO SITE LIGHTING. SITE FIXTURES SHALL BE PHOTOCELL ON, TIME CLOCK OFF. PROVIDE NUMBER OF HEADS AT ANGLE SHOWN FOR FIXTURE CONFIGURATION.
- YELLOWSTONE VALLEY ELECTRIC COOP IS SERVING UTILITY, AND EXISTING SERVICE IS OVERHEAD. SET TWO POLES TO EXTEND SERVICE TO THIS LOCATION, WITH POLE MOUNTED TRANSFORMERS.
- 800A CT CABINET WITH METER ABOVE, AND 800A SERVICE DISCONNECT.
- POWER FOR LIGHTED MONUMENT SIGN IS ASSUMED TO BE 208V, 1 $\phi$ , 30A. PROVIDE 30A FUSED WP HD DISCONNECT SWITCH AND CONNECT WITH 2#10+#10G IN 1" C. VERIFY FINAL LOCATION AND REQUIREMENTS PRIOR TO ROUGH IN.
- LOCATION OF PANELS LP1 AND LP2.
- PROVIDE 1" CONDUIT WITH PULL STRING FOR COMMUNICATION TO MONUMENT SIGN FROM COMM BOARD TO SIGN.
- PROVIDE THREE 3" CONDUITS FROM NEW UTILITY POLE WITH TRANSFORMERS TO NEW ELECTRICAL SERVICE.
- PROVIDE ONE 2" CONDUIT WITH TRACER WIRE AT A 24" DEPTH FROM PANEL LP1 TO A POINT 5' FROM THE EXTERIOR WALL FOR FUTURE USE.
- LOCATION OF COMM BOARD.
- POWER FOR VACUUM IS ASSUMED TO BE 2520W, 120V, 1 $\phi$ . VERIFY FINAL LOCATIONS AND REQUIREMENT PRIOR TO ROUGH IN. CONNECT EACH VACUUM WITH 2#8+#10G, AND MAY HOMERUN AS SHOWN IN 1" C.

1  
EO.2

### ELECTRICAL SITE PLAN

Scale: 1" = 10'-0"

**COPYRIGHT STATEMENT:**  
THESE DESIGNS ARE THE PROPERTY OF AT ARCHITECTURE. NEITHER THESE DESIGNS OR ANY PORTION THEREOF SHALL BE COPIED, REPRODUCED, MODIFIED, OR RECONSTRUCTED WITHOUT THE WRITTEN CONSENT OF AT ARCHITECTURE. VIOLATION IS AN INFRINGEMENT OF COPYRIGHT LAWS. PROJECT # 2220

DATE: 09/16/2022

DRAWN BY: CH / KV

CHECKED BY: CH/KV

REVISIONS:


ELECTRICAL SITE PLAN

E0.3

SECTION 2022-01-04: OFFICIAL STAMPED RECORD DRAWINGS ARE LOCATED AT THE BUSINESS OFFICE OF THE REGISTERED PROFESSIONAL WHO SEALED THIS DRAWING. DEVIATIONS OR MODIFICATIONS FROM THE OFFICIAL SEALED SET W/O THE BENEFIT OF THE PROFESSIONAL OF RECORD IS AT THE RISK OF THE CONTRACTOR OR OWNER.