

Current Code NX3: 3

20' from rear property line
next to N zone districts

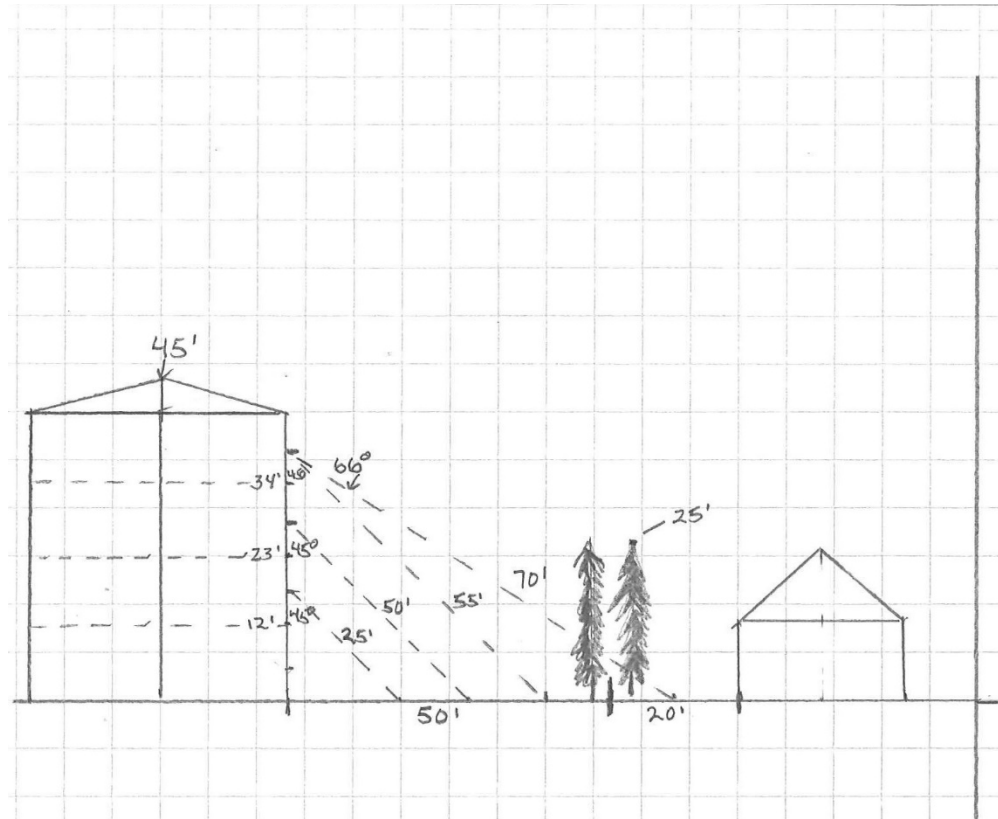
45° angle of depression (view) from apts
and elevation (view) from SFR backyard
more acute angles could allow observation
of activity between rear yards

Current Code NX2 requires

20' from rear property line for new NX2 bldg
next to N zone district
regardless of building height

Maximum flexion of a human neck is 90° without pain

1 inch = 30'



Proposed NX2/NX3 50 ft setback for new structures greater than 2 stories or 35 ft in height

Visual perception at distances greater than 25 feet drops off

Human faces cannot be identified at distances greater than 150 feet