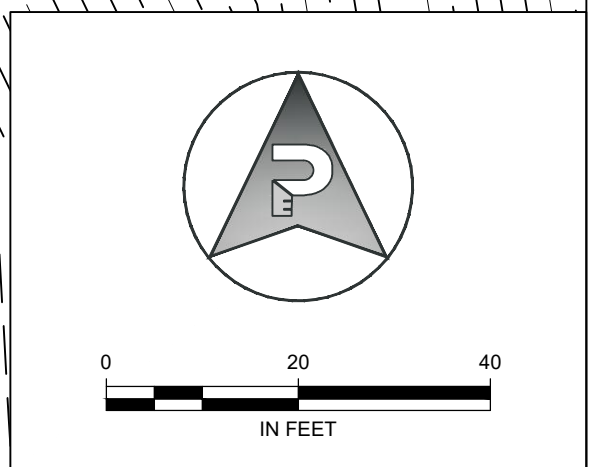


- LEGEND**
- EXISTING ASPHALT CONCRETE PAVEMENT
  - STEEP TERRAIN ON LOT (UNBUILDABLE)
  - EXISTING SEWER EASEMENT (UNBUILDABLE)
  - 100-YEAR FLOODPLAIN (UNBUILDABLE)
  - EXISTING ASPHALT CONCRETE PAVEMENT
  - CMU-1 BUILD-TO/SETBACK LINES
  - LOT LINES

- GENERAL NOTES**
- 1 PROPERTY LINE, TYP.
  - 2 EDGE OF ASPHALT, TYP.
  - 3 EDGE OF GRAVEL, TYP.
  - 4 CURB & GUTTER, TYP.
  - 5 FENCE, TYP.
  - 6 CULVERT, TYP. (SIZES VARY)
  - 7 DOMESTIC WATER LINE FROM COB PUBLIC WORKS WEBSITE, CONTRACTOR TO VERIFY SIZE AND LOCATION (SIZES VARY)
  - 8 WATER VALVE, TYP.
  - 9 FIRE HYDRANT, TYP.
  - 10 CURB STOP, TYP.
  - 11 BOULDER PIT PERFORATED PIPE, TYP.
  - 12 CATCH BASIN DRAIN, TYP.
  - 13 8" Ø SANITARY SEWER LINE, TYP.
  - 14 SANITARY SEWER MANHOLE, TYP.
  - 15 NATURAL GAS LINE, TYP.
  - 16 UNDERGROUND COMMUNICATION LINE, TYP.
  - 17 COMMUNICATION PULL BOX, TYP.
  - 18 UNDERGROUND TELEPHONE LINE, TYP.
  - 19 TELEPHONE PEDESTAL, TYP.
  - 20 BOLLARD, TYP.
  - 21 SIGN, TYP.

- DEMOLITION NOTES**
- 1 REMOVE EXISTING GRAVEL APPROACH



REVISIONS					
NO.	DESCRIPTION	DATE	BY	CHECKED BY	
1					
2					
3					
4					
5					
6					

**PRELIMINARY SET**

## PERFORMANCE

### ENGINEERING

608 NORTH 29TH STREET (406) 384-0080  
BILLINGS, MT 59101 performance-ec.com

TK DESIGNED BY	
TK DRAWN BY	
11/22 DATE	
QUALITY ASSURANCE	
SA CHECKED BY	
11/22 DATE	

**BLUE CREEK CAR WASH**

2135 BLUE CREEK ROAD BILLINGS, MT 59102

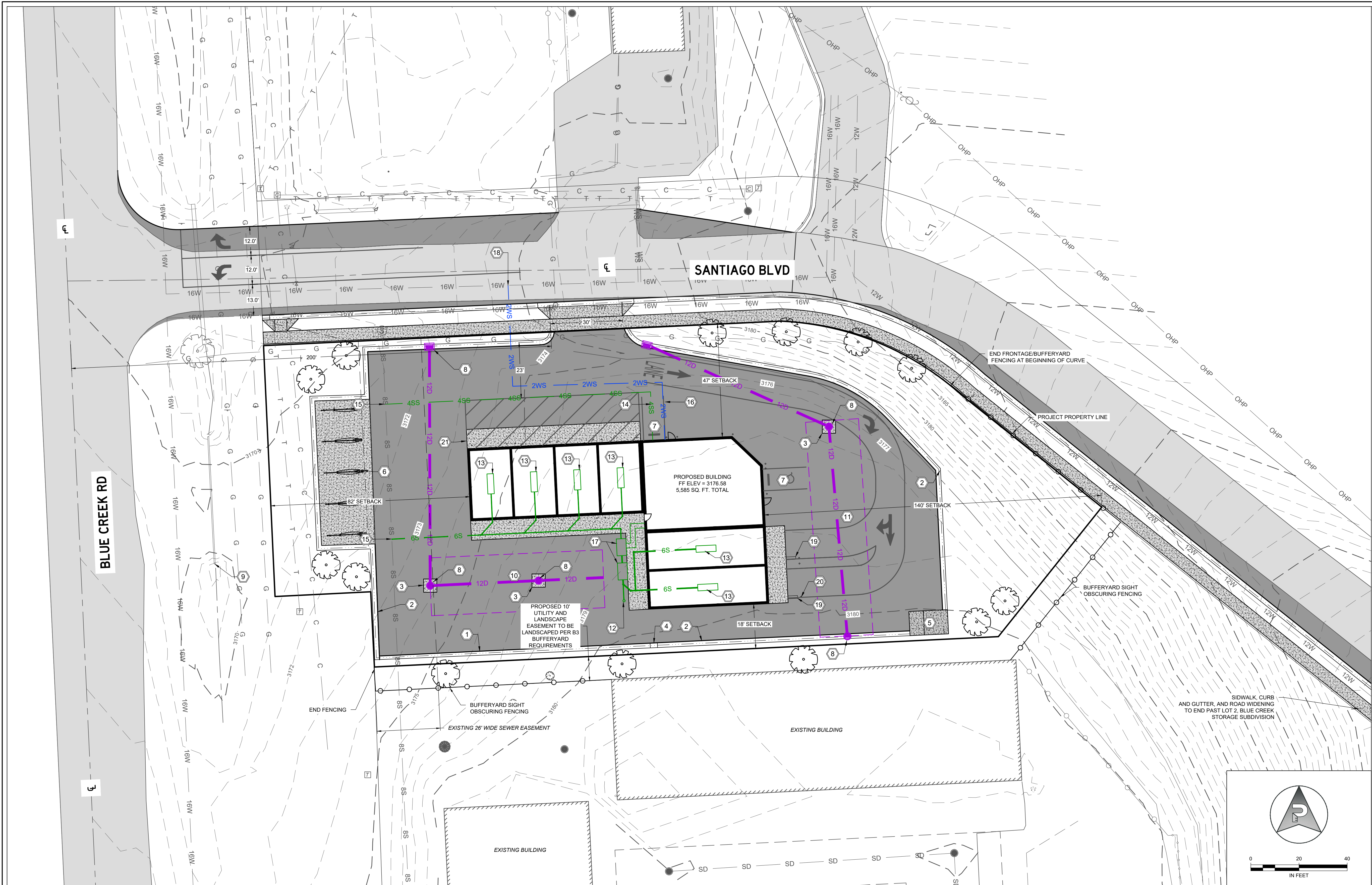
**EXISTING LAYOUT  
AND LOT DIMENSIONS**

PROJECT NUMBER  
2019-010

SHEET NUMBER  
1 OF 2

DRAWING NUMBER  
**C1.0**

COPYRIGHT 2022 ©



**CONSTRUCTION NOTES**


- EXISTING ASPHALT CONCRETE PAVEMENT
- PROPOSED ASPHALT CONCRETE PAVEMENT
- PROPOSED CONCRETE

**CONSTRUCTION NOTES**

- 1 RIBBON CURB
- 2 CATCH CURB
- 3 CONCRETE COLLAR
- 4 CURB TRANSITION
- 5 DUMPSTER ENCLOSURE
- 6 VACUUM ISLAND
- 7 PARKING STALL
- 8 STORMWATER STRUCTURE
- 9 CMP CULVERT WITH FLARED ENDS
- 10 BOULDER PIT A
- 11 BOULDER PIT B
- 12 SANITARY SEWER CLEANOUT
- 13 CITY OF BILLINGS STANDARD OIL & WATER SEPARATOR - 2.66' X 8.33' X 3'
- 14 PVC SANITARY SEWER SERVICE
- 15 CONNECT TO EXISTING SANITARY SEWER LINE
- 16 WATER SERVICE
- 17 SEDIMENT RECIRCULATION SYSTEM
- 18 CONNECT TO EXISTING CITY OF BILLINGS WATER DISTRIBUTION SYSTEM
- 19 CAR WASH KIOSK
- 20 BOLLARD (ALL LOCATIONS CALLED OUT ON SHEET C3.00)
- 21 CONCRETE APRON

REVISIONS				
NO.	DESCRIPTION	DATE	BY	CHECKED BY
1	#	#	#	#
2	#	#	#	#
3	#	#	#	#
4	#	#	#	#
5	#	#	#	#
6	#	#	#	#

**PRELIMINARY SET**



**PERFORMANCE ENGINEERING**  
 608 NORTH 29TH STREET (406) 384-0080  
 BILLINGS, MT 59101 performance-ec.com

TK DESIGNED BY \_\_\_\_\_  
 TK DRAWN BY \_\_\_\_\_  
 11/22 DATE \_\_\_\_\_  
 SA CHECKED BY \_\_\_\_\_  
 11/22 DATE \_\_\_\_\_

**BLUE CREEK CAR WASH**

2135 BLUE CREEK ROAD BILLINGS, MT 59102

**PROPOSED LAYOUT**

PROJECT NUMBER  
2019-010

SHEET NUMBER  
2 OF 2

DRAWING NUMBER  
**C1.1**

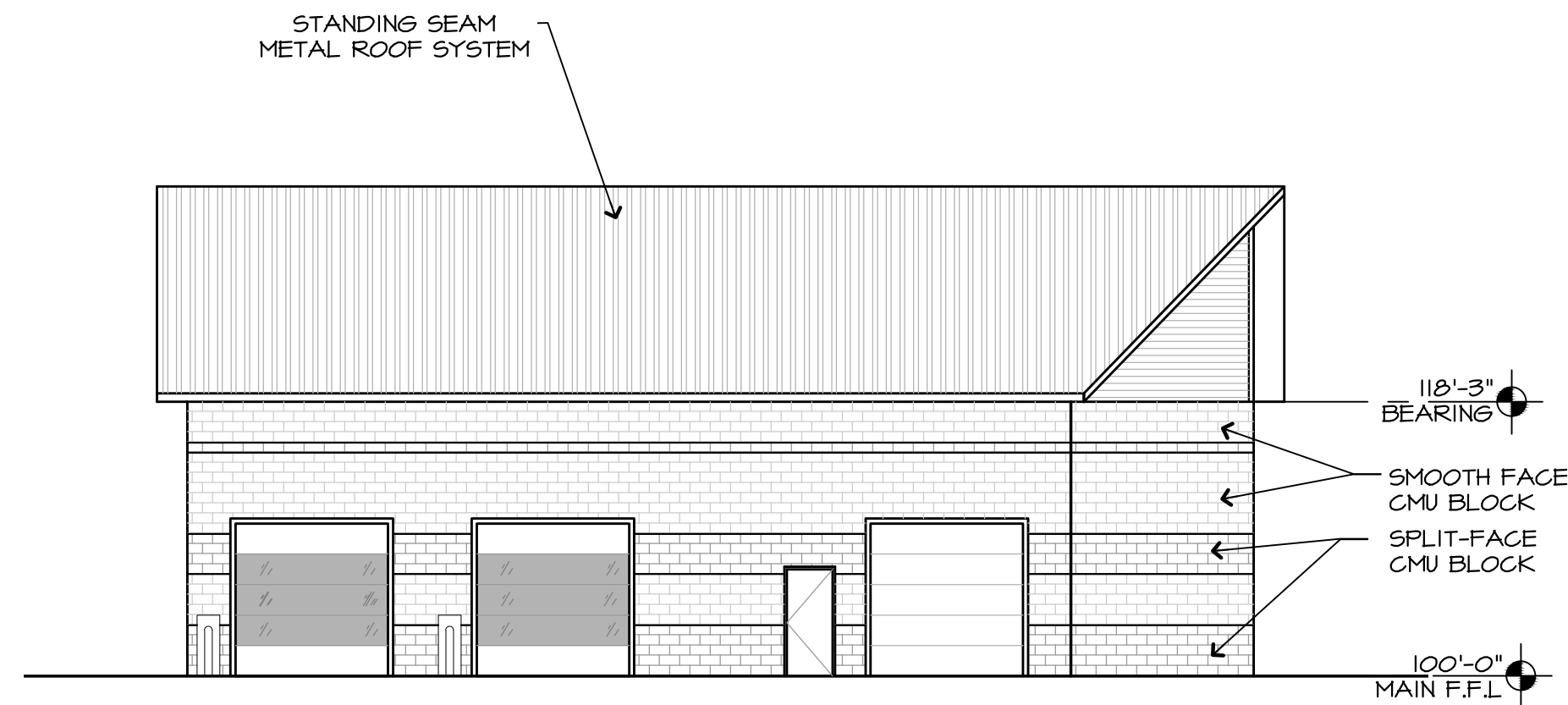
COPYRIGHT 2022 ©



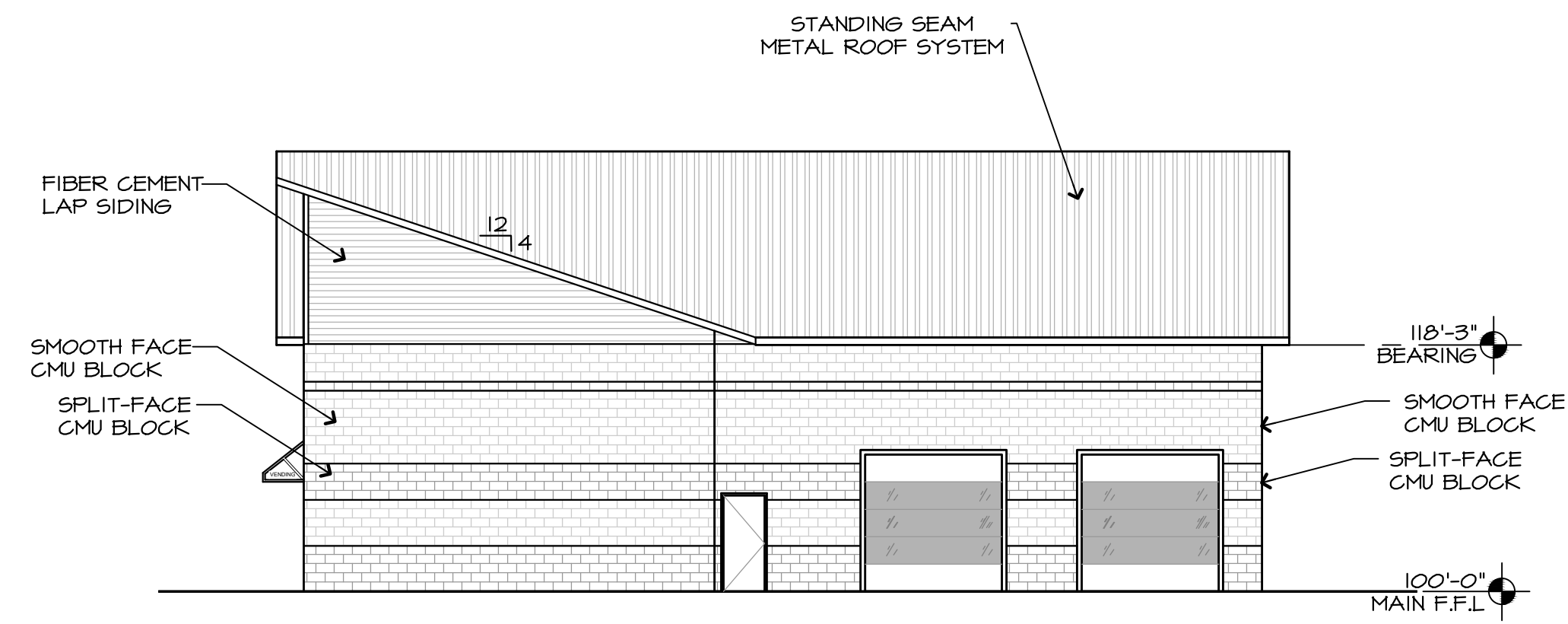
**BLUECREEK CARNASH**  
BILLINGS, MT



**1 LEFT ELEVATION**  
Scale: 3/32" = 1'-0"



**2 REAR ELEVATION**  
Scale: 3/32" = 1'-0"



**3 FRONT ELEVATION**  
Scale: 3/32" = 1'-0"



**4 RIGHT ELEVATION**  
Scale: 3/32" = 1'-0"

NOTE: COORDINATION IS REQUIRED BY ALL TRADES SO NO CONFLICTS IN LOCATION OF DUCTS, CONDUITS, SPRINKLER HEADS, DIFFUSERS, ELECTRICAL BOXES, EQUIPMENT, ETC, OCCURS. GENERAL CONTRACTOR TO COORDINATE ALL TRADES.

**GENERAL NOTES:**

1. SEE STRUCTURAL FOR COLUMNS, FLOOR SLABS, SUB BASE, COMPACTION, FOUNDATION WALLS, AND FOOTINGS.
2. SEE CIVIL FOR GRADING, PAVING, DRAINAGE AND UTILITY LOCATIONS.
3. SEE MECHANICAL FOR HVAC AND PLUMBING.
4. SEE ELECTRICAL FOR SERVICE ENTRANCE, POWER AND LIGHTING.
5. SEE PRE-MANUFACTURED BUILDING SHOP DRAWINGS FOR METAL BUILDING CONSTRUCTION.

**COPYRIGHT STATEMENT:**  
THESE DESIGNS ARE THE PROPERTY OF AT ARCHITECTURE. NEITHER THESE DESIGNS OR ANY PORTION THEREOF SHALL BE COPIED, REPRODUCED, MODIFIED, OR RECONSTRUCTED WITHOUT THE WRITTEN CONSENT OF AT ARCHITECTURE. VIOLATION IS AN INFRINGEMENT OF COPYRIGHT LAWS. PROJECT #2230

DATE: 04/16/2022  
DRAWN BY: MM  
CHECKED BY: ja  
REVISIONS:

EXTERIOR  
ELEVATIONS &  
SECTIONS

**A4.0**