
**SMART
DESIGN.**

**SAFER
SPACES.**

SECURITY SURVEY

Prepared for: Comanche Park, 343 S Plainview St

January 27th, 2023

A partnership of:



BILLINGS
Police



DISCLAIMER & CONFIDENTIALITY

THIS SECURITY SURVEY HAS BEEN CONDUCTED AS A PUBLIC SERVICE OF THE BILLINGS POLICE DEPARTMENT'S CRIME PREVENTION UNIT, BILLINGS CHAMBER OF COMMERCE, AND DOWNTOWN BILLINGS ALLIANCE. THE INFORMATION CONTAINED HEREIN IS BASED ON GUIDELINES SET BY THE CRIME PREVENTION THROUGH ENVIRONMENTAL DESIGN (CPTED) TRAINING INSTITUTE AND THE OBSERVATIONS OF THE INDIVIDUAL CPTED PROFESSIONAL CONDUCTING THE SURVEY. THIS SURVEY IS INTENDED TO ASSIST YOU IN IMPROVING THE OVERALL LEVEL OF SECURITY ONLY. IT IS NOT INTENDED TO IMPLY THE EXISTING SECURITY MEASURES, OR PROPOSED SECURITY MEASURES ARE ABSOLUTE OR PERFECT.

ALL NEW CONSTRUCTION OR RETROFITS SHOULD COMPLY WITH EXISTING BUILDING CODES, ZONING LAWS AND FIRE CODES. PRIOR TO INSTALLATION OR MODIFICATIONS THE PROPER LICENSES AND VARIANCES SHOULD BE OBTAINED AND INSPECTIONS SHOULD BE CONDUCTED BY THE APPROPRIATE AGENCY.

THIS SECURITY SURVEY IS A CONFIDENTIAL DOCUMENT INTENDED FOR THE USE AND VIEWING OF THE PERSON/S WHO REQUESTED THE SURVEY. IT IS NOT REQUIRED TO BE DISCLOSED UNLESS ORDERED TO DO SO BY COURT ORDER.



Sergeant Brad Mansur
NICP CPTED Practitioner
Billings Police Department

Facility Background

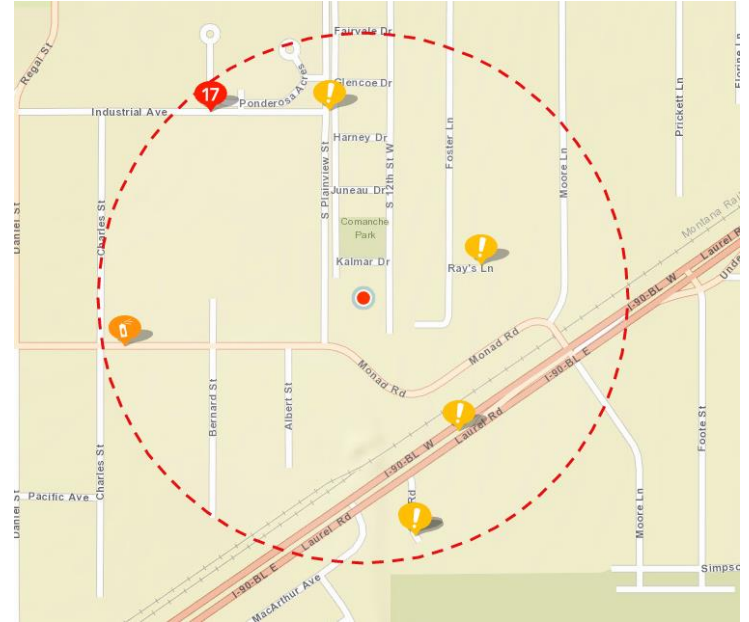
The Three 'D's

- **Designation:** Comanche Park is a 2 acre city park with a small playground feature, single basketball hoop, and a Parkland Gleaning Project desination site.
 - **Definition:** The property boundaries are made by alley road systems on 3 sides and S Plainview St on its west side.
 - **Design:** The park is 2 acres of mostly grass and trees. A wood chip mulch playground area with a small play feature is surrounded by concrete curb. A circlular concrete pad with a single basketball hoop is also inside the park.
-

Facility Background

CrimeMapping

- Reported crime
- 4-week period
 - (January 1 to January 29th)



Facility Background

CrimeMapping

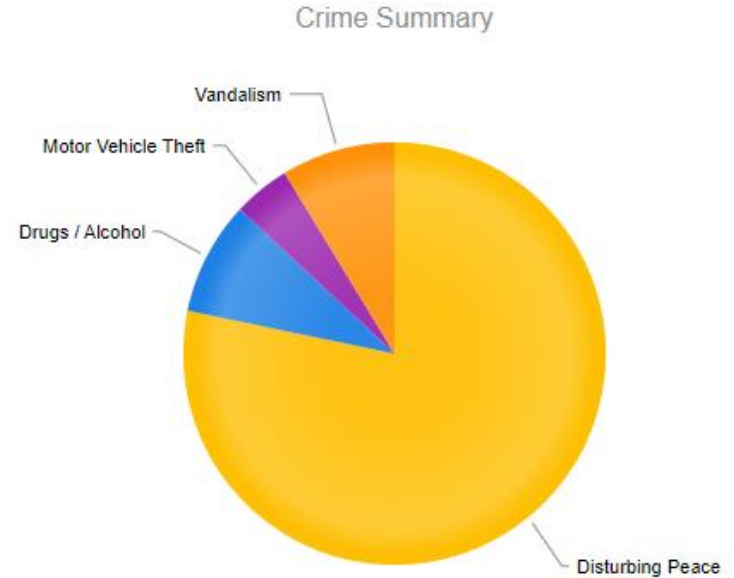
- 17 Disturbing the Peace
- 2 Drugs/Alcohol
- 2 Vandallism
- 1 Motor Vehicle Theft



Facility Background

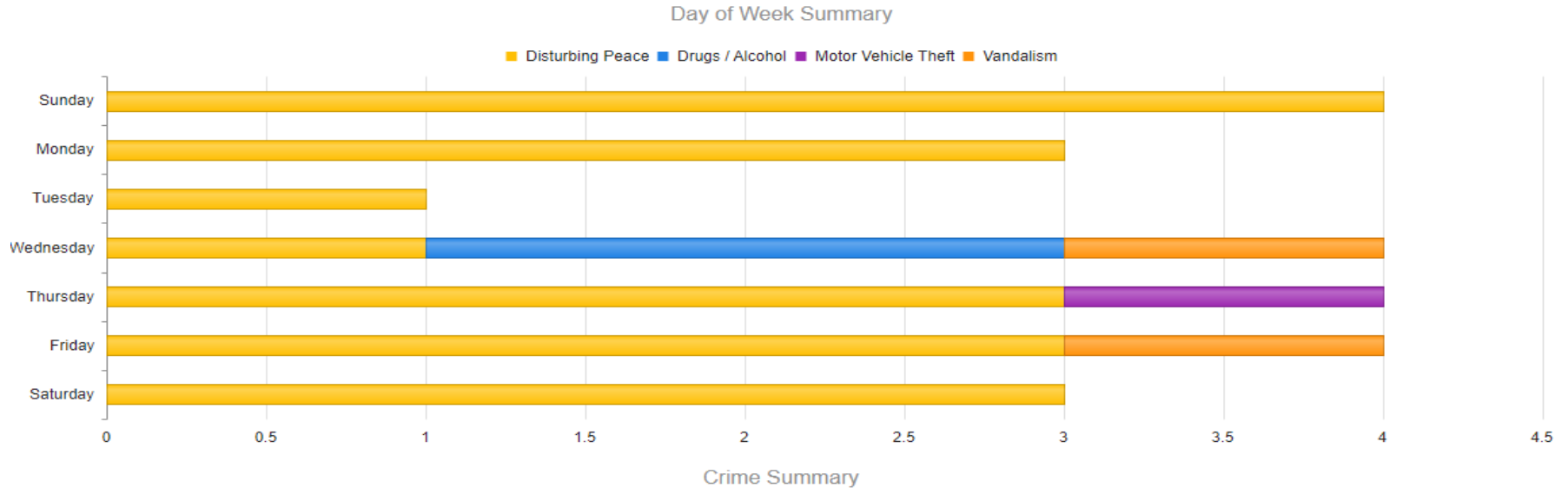
CrimeMapping

- Reported crime
- 4-week period
 - (January 1 to January 29th)



Facility Background

ASSAULT | BURGLARY | DISTURBING PEACE
DRUGS/ALCOHOL | DUI | FRAUD | LARCENY |
VANDALISM | WEAPONS



CrimeMapping: reported crime / 4-week period (January 1 – January 29)

PRINCIPLES

Natural Surveillance
Eyes on the Streets

Natural Access Control
Movement through and use of the space

Territorial Reinforcement
Establishing ownership and setting behavioral expectations

Maintenance
Appearances are important to safety, à la Broken Windows theory

Lighting
How does lighting affect the environment after dark?

Natural Surveillance

Eyes on the Street

- Clear 360° view from all points within the park.
- Trees are mature and provide no obstruction to surveillance.
- Park name sign is low to the ground, reducing site line obstructions.

Recommendations

- Continue to perform seasonal trimming to trees to keep open sight lines.



Natural Surveillance



Mature trees are currently trimmed high provide clear sight lines from all angles.

- Bottom of trees should be no lower than 6 feet.
 - Height of ground cover and shrubs no higher than 3 feet.
-

Natural Access Control

Highlights

- Park Gleaning Project sign clearly sets the space as different from the rest of the park.

Recommendations

- The park lacks any wayfinding. Visitors don't know they are going to a park until they arrive.
 - Add relevant signage to S Plainview St and Central Ave to indicate a Park is in the neighborhood
 - Add decorative fencing or other perimeter items around the Fruit tree area to outline its space.
 - 3 alleys surround the park without a positive curb or fence. Numerous tire tracks were located inside caused by vehicles driving off road recklessly. Add positive curbing or fencing on the north, east, and south sides of the park.
 - Add handicap accessible walkway leading to key places within the park from a designated handicap parking area.
-

Natural Access Control



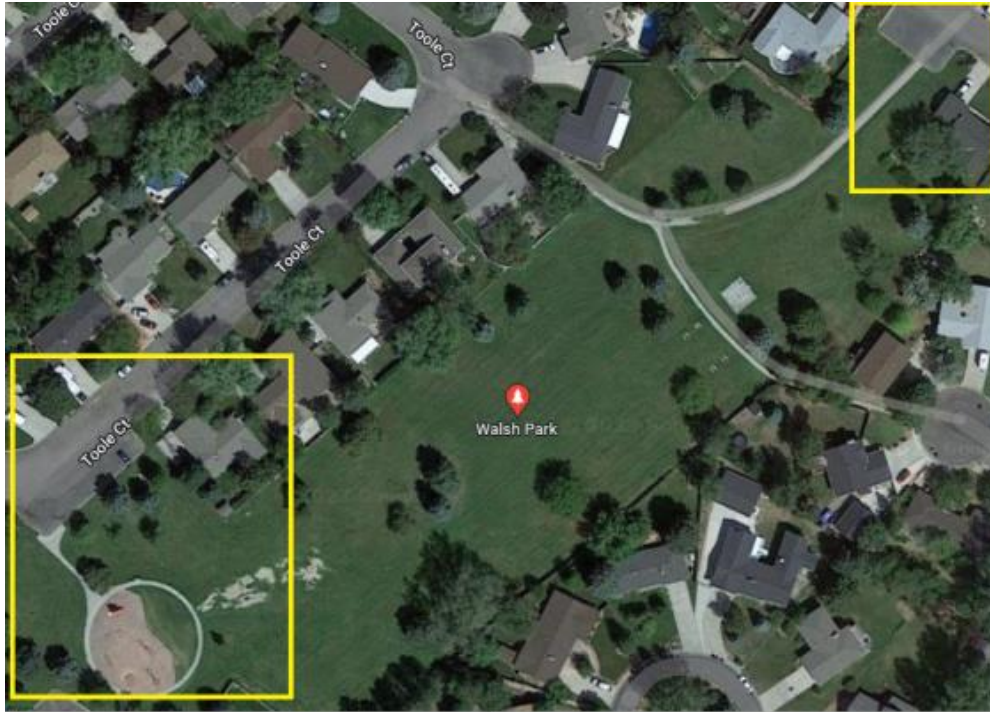
A corner of the park contains a 'Gleaning Project' which spans numerous parks. The sign is clearly seen from all points in the park and there are no questions of the intended use of this section of the park.

Natural Access Control



A lack of positive barrier or curbing. Park has been used for off road reckless driving.

Natural Access Control



Walsh park in Billings Heights has Handicap accessible walkways to the playground and through the park. Two small parking lot areas were put into the park footprint and are paved.

Natural Access Control



Recommendation: Fencing or some form of barrier between alley and the park is recommended.

Territorial Reinforcement

Highlights

- A park sign with the park name
- Playground has a consistent concrete curbing, setting borders between the playground and the green space.

Recommendations

- Add a welcome sign to create a celebrated entrance point with park rules and hours to reinforce appropriate park expectations.
 - Consistent style, placement, and use of park signs provides a sense of continuity.
 - Add outlined parking spaces or a designated parking area.
 - Update park name sign to new materials
-

Territorial Reinforcement



A park name sign posted on one corner of the property. It is the only sign establishing the space as a city park and not private property. This carries with it the expectations users have for park use as there are no other signs.

Territorial Reinforcement



Positive concrete curbing outlines the playground from the green space. Reinforces intended use of each area.

Territorial Reinforcement



A lack of signage was found. This creates a sense of 'being off the beaten path'. A perceived lack of attention can bring undesirable populations to abuse the space.

Maintenance

Highlights

- The trees and green space are well maintained.
- Dog Waste bin and poop bags were provided and appeared to be used regularly.
- No true graffiti was located in the park.

Recommendations

- Replace basketball hoop, backboard, and net
 - Repaint lines on basketball court.
 - Large circular concrete pad offers the availability for a community mural/art.
-

Maintenance



Well maintained green space and trees.

Maintenance



Provided and used dog waste bin and bags

Maintenance



Replace aging baseball backboard, hoop, and net

Maintenance



Large concrete area needing repainted. Public art increases a positive interaction with the space. Public art has been shown to reduce the likelihood of graffiti.

Lighting

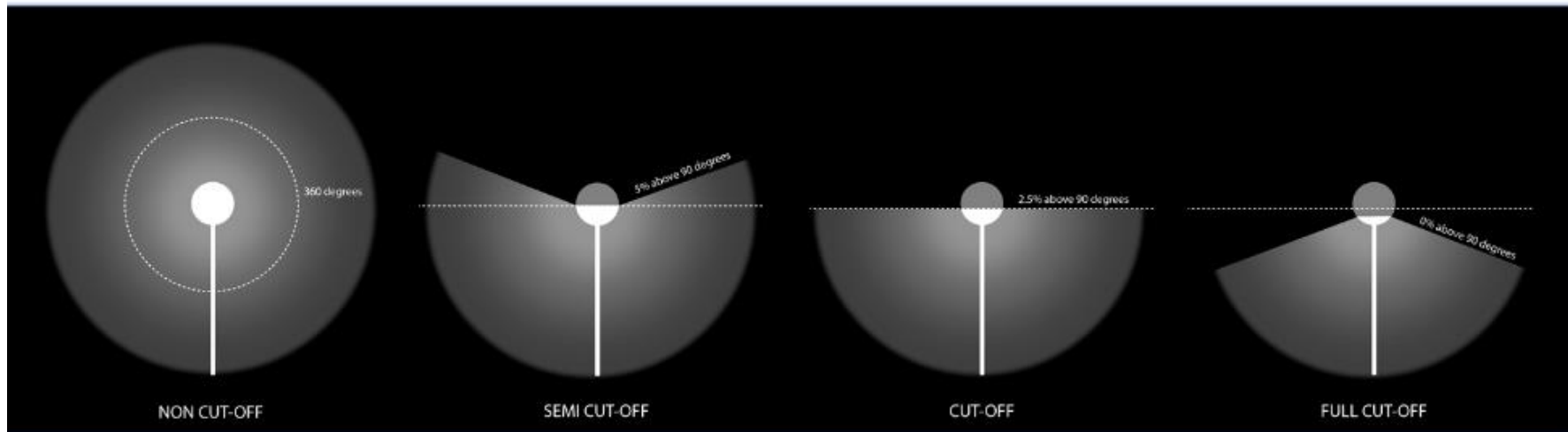
There is currently no lighting at Comanche park. Most city parks do not have consistent lighting but, a common theme is lighting on the playground area. The sun goes down at approximately 5pm for 6 months out of the year. A lack of lighting at the playground limits the parks use during open hours.

- A foot-candle is the most common unit of measure for quantifying light levels. One foot-candle is equal to one lumen per square foot.

Recommendations

- Consider lighting covering the playground area and any walkways.
 - Lighting should meet IES recommendations of 1 foot candle
 - A lighting head type that provides minimal glare and a standard cutoff. Light should be directed only where it is wanted.
-

LIGHTING: CUT-OFF



WORST

OKAY

BETTER

BEST

Lighting



Due to a lack of lighting, both legitimate and illegitimate users are unable to be seen in the park, to include during open hours.

-numerous residences border the park and could provide eyes on the property if proper lighting existed.

All Recommendations

Natural Surveillance

- Continue to perform seasonal trimming to trees to keep open sight lines.
- Add lighting to the playground. (See lighting section)

Natural Access Control

- The park lacks wayfinding. Add relevant signage to S Plainview St and Central Ave to indicate a park is in the neighborhood.
- Add decorative fencing or other perimeter items around the fruit tree area to outline its space.
- 3 alleys surround the park without a positive curb or fence. Add positive curbing or fencing on the north, east, and south sides of the park.
- Add handicap accessible walkway leading to key places within the park from a designated handicap parking area.

Territorial Reinforcement

- Add a welcome sign to create a celebrated entrance point with park rules and hours to reinforce appropriate park expectations
- Consistent style, placement, and use of open signs provides a sense of continuity.
- Add outlined parking spaces or a designated parking area.
- Update park name sign to new materials.

Maintenance

- Replace basketball hoop, backboard, and net.
- Repaint lines on basketball court.
- Large circular concrete pad offers the availability for a community mural/art.

Lighting

- Consider lighting covering the playground
 - Lighting should meet IES recommendations of 1 foot candle
 - A lighting head type that provides minimal glare and a standard cutoff. Light should be directed only where it is wanted.
-

**SMART
DESIGN.**

**SAFER
SPACES.**

THANK YOU!



BILLINGS
Police

downtown
Billings