

K:\Billings\Yellowstone County\2023\198 Round Building Parking Lot Design\05CAD\Sheet\plansheet\23198-COVR.dwg COVER 7/7/2023 8:21:42 AM

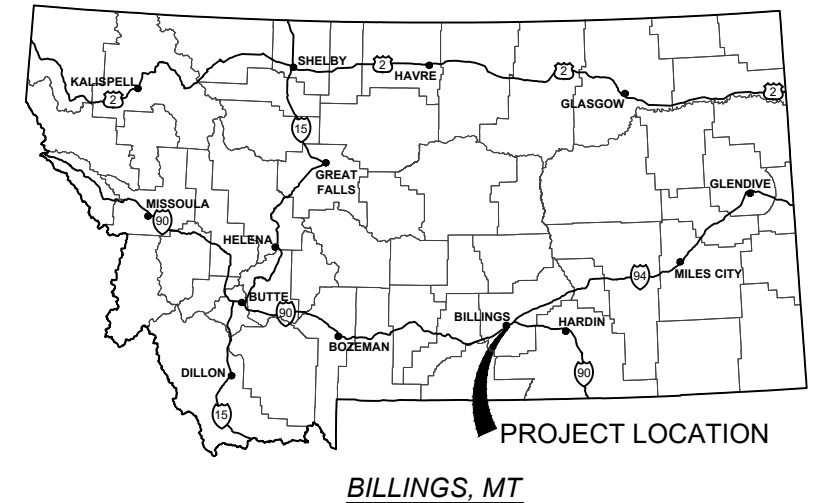
CONSTRUCTION DRAWINGS

YELLOWSTONE COUNTY COURTHOUSE PARKING LOT DESIGN

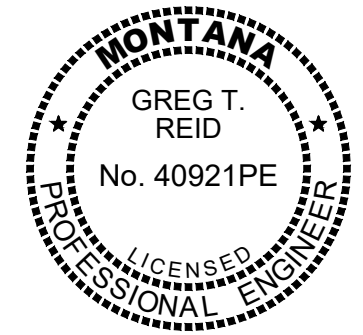
Sheet List Table	
Sheet Number	Sheet Title
1	COVER
2	GENERAL NOTES
3	EXISTING OVERVIEW
4	PHASE II DEMO
5	PROPOSED SITE LAYOUT
6	PARKING LOT GRADING SHEET
7	CURB PLAN AND PROFILE
8	STORMWATER PLAN AND PROFILE
9	STORMWATER PLAN AND PROFILE
10	STRIPING SHEET
11	LIGHT POLE BASE DETAIL
12	SIGNAGE DETAILS



R26E
LOCATION MAP



0 250' 500'
SCALE: 1" = 500'
11" x 17" PAPER SIZE



PREPARED FOR:		YELLOWSTONE COUNTY	
		PO BOX 35015 BILLINGS, MT 59107	
PREPARED BY:		 WWC ENGINEERING 550 S. 24TH ST. W., SUITE 201 BILLINGS, MT 59102 (406) 894-2210 www.wwcengineering.com	
PROJECT NO. 2023-198		DESIGNED BY: <u>SMC</u>	DRAWN BY: <u>ZSL</u>
NO.	REVISION	BY	DATE
			7/7/2023
			CHECKED BY: <u>GTR</u>
			DATE: <u>7/7/2023</u>
			DRAWING NO.
			1

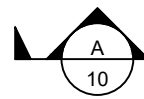
BID SET



GENERAL CONSTRUCTION NOTES

1. UNLESS SPECIFICALLY SHOWN ON THE DRAWINGS, ALL WORK SHALL CONFORM TO THE 6TH EDITION OF MPWSS AS MODIFIED BY THE CITY OF BILLINGS, SPECIAL PROVISIONS, AND THESE PLANS.
2. THE CONTRACTOR SHALL BE RESPONSIBLE FOR ALL PERMITS REQUIRED AND CONSTRUCTION TESTING FOR CONSTRUCTION ACTIVITIES.
3. THE CONTRACTOR SHALL RESTORE ALL EXISTING ROADWAY TO EQUAL OR BETTER CONDITION THAN EXISTED PRIOR TO CONSTRUCTION, AS DETERMINED BY THE OWNER AND THE ENGINEER.
4. THE LOCATION, DEPTH AND SIZE OF EXISTING UTILITIES SHOWN ON THESE PLANS ARE APPROXIMATE. THE CONTRACTOR SHALL FIELD VERIFY THE EXISTENCE, LOCATION, DEPTH, SIZE, LINE AND GRADE OF EXISTING UTILITY CONNECTIONS PRIOR TO CONSTRUCTION. THE CONTRACTOR SHALL BE RESPONSIBLE FOR ANY DAMAGE TO THE EXISTING FACILITIES DUE TO FAILURE TO LOCATE OR PROVIDE PROPER PROTECTION WHEN LOCATION IS KNOWN.
5. THE CONTRACTOR SHALL SUPPLY ALL NECESSARY FITTINGS, COUPLINGS AND SPOOL PIECES FOR CONNECTING NEW UTILITIES TO EXISTING UTILITIES. THESE PLANS MAY NOT SHOW ALL REQUIRED COMPONENTS FOR MAKING THE CONNECTIONS.
6. ALL PROFILES REPRESENT EXISTING GROUND (DASHED LINE) AND FINISHED GRADE (SOLID LINE) ALONG THE ALIGNMENTS INDICATED ON THE PLANS. ELEVATIONS ARE FINISHED GROUND ELEVATIONS.
7. ALL DISTURBED AREAS SHALL BE SEEDED OR SODDED BY THE CONTRACTOR USING A SEED MIX OR SOD APPROVED BY THE PRIVATE PROPERTY OWNER.
8. THE CONTRACTOR SHALL BE RESPONSIBLE FOR COORDINATION OF UTILITY (PHONE/POWER/CATV) INSTALLATION WITH THE CITY OF BILLINGS AND THE PRIVATE PROPERTY OWNER.
9. THE CONTRACTOR SHALL NOTIFY ONE CALL @ 1-800-424-5555 FOR ONSITE UTILITY LOCATION. ALL EXISTING UTILITIES SHALL BE MARKED BEFORE DIGGING.
10. THE CONTRACTOR SHALL MAINTAIN SERVICE OF ALL EXISTING UTILITIES. IF SAID SERVICE IS DAMAGED, THE CONTRACTOR SHALL IMMEDIATELY REPAIR THE DAMAGE AT THE CONTRACTOR'S EXPENSE.
11. THE CONTRACTOR SHALL NOTIFY THE ENGINEER A MINIMUM OF 48 HOURS PRIOR TO BEGINNING ANY WORK.
12. ALL UTILITY CONDUITS FOR IRRIGATION, ELECTRICAL, GAS, PHONE, CATV, ETC. SHALL BE BURIED A MINIMUM 24" FROM FINISHED GRADE WITH TYPE A BACKFILL, UTILIZING TYPE 1 BEDDING, UNLESS DIRECTED OTHERWISE BY ENGINEER.
13. IF THE CONTRACTOR DETERMINES THE NEED TO DISTURB MORE THAN 1.0 ACRE DURING THE CONSTRUCTION OF THE PROJECT, THE CONTRACTOR SHALL BE RESPONSIBLE FOR OBTAINING AN MPDES PERMIT AND COMPLYING WITH ALL TERMS OF THE PERMIT. NO SEPARATE PAYMENT WILL BE MADE FOR THIS WORK. IF LESS THAN 1.0 ACRES AND WITHIN CITY OF BILLINGS MS4 CONTRACTOR TO FILE NOI WITH CITY OF BILLINGS ENVIRONMENTAL DEPARTMENT.
14. QUANTITIES SHOWN IN THESE PLANS ARE FOR INFORMATIONAL PURPOSES ONLY. THE CONTRACTOR SHALL BE RESPONSIBLE FOR DETERMINING ACTUAL QUANTITIES.

DRAWING NOTATION



INDICATES CROSS SECTION LOCATION. "A" REFERS TO THE CROSS SECTION DESIGNATION. "10" REFERS TO THE SHEET NUMBER WHERE THE SECTION IS CUT OR SHOWN.



INDICATES DETAIL LOCATION. "1" REFERS TO THE DETAIL DESIGNATION. "12" REFERS TO THE SHEET NUMBER WHERE THE DETAIL IS INDICATED OR SHOWN.

ABBREVIATIONS

ACI	AMERICAN CONCRETE INSTITUTE	HWY	HIGHWAY
BAR	REBAR	INV	INVERT ELEVATION
BMP	BEST MANAGEMENT PRACTICES	LF	LINEAR FEET
BOT	BOTTOM	MH	MANHOLE
BVC	BEGIN VERTICAL CURVE	MJ	MECHANICAL JOINT
CFS	CUBIC FEET PER SECOND	O.C.	ON CENTER
CL	CENTERLINE	O.C.E.F.	ON CENTER EACH FACE
CMP	CORRUGATED METAL PIPE	OHP	OVERHEAD POWER
CONC	CONCRETE OR CONCENTRIC	PI	POINT OF INTERSECTION
CP	CONTROL POINT	POT	POINT ON TANGENT
CSP	CORRUGATED STEEL PIPE	PS	PIPE SUPPORT
CTR	CENTER	PT	POINT, POINT OF TANGENCY
CU FT	CUBIC FEET	PVC	POLYVINYL CHLORIDE
CULV	CULVERT	PWR	POWER
DI	DUCTILE IRON OR DRAIN INLET	RCP	REINFORCED CONCRETE PIPE
DIA	DIAMETER	R/W OR ROW	RIGHT OF WAY
EA	EACH	SAN	SANITARY
E.F.	EACH FACE	SST	STAINLESS STEEL
EL, ELEV	ELEVATION	STA	STATION
EOP	EDGE OF PAVEMENT	TBC	TOP BACK OF CURB
EVC	END VERTICAL CURVE	TYP	TYPICAL
FT	FOOT OR FEET	UG	UNDERGROUND
GPM	GALLONS PER MINUTE	WTR	WATER
HP	HORSEPOWER		

BLOCK LEGEND

EXISTING	PROPOSED	EXISTING	PROPOSED	EXISTING	PROPOSED

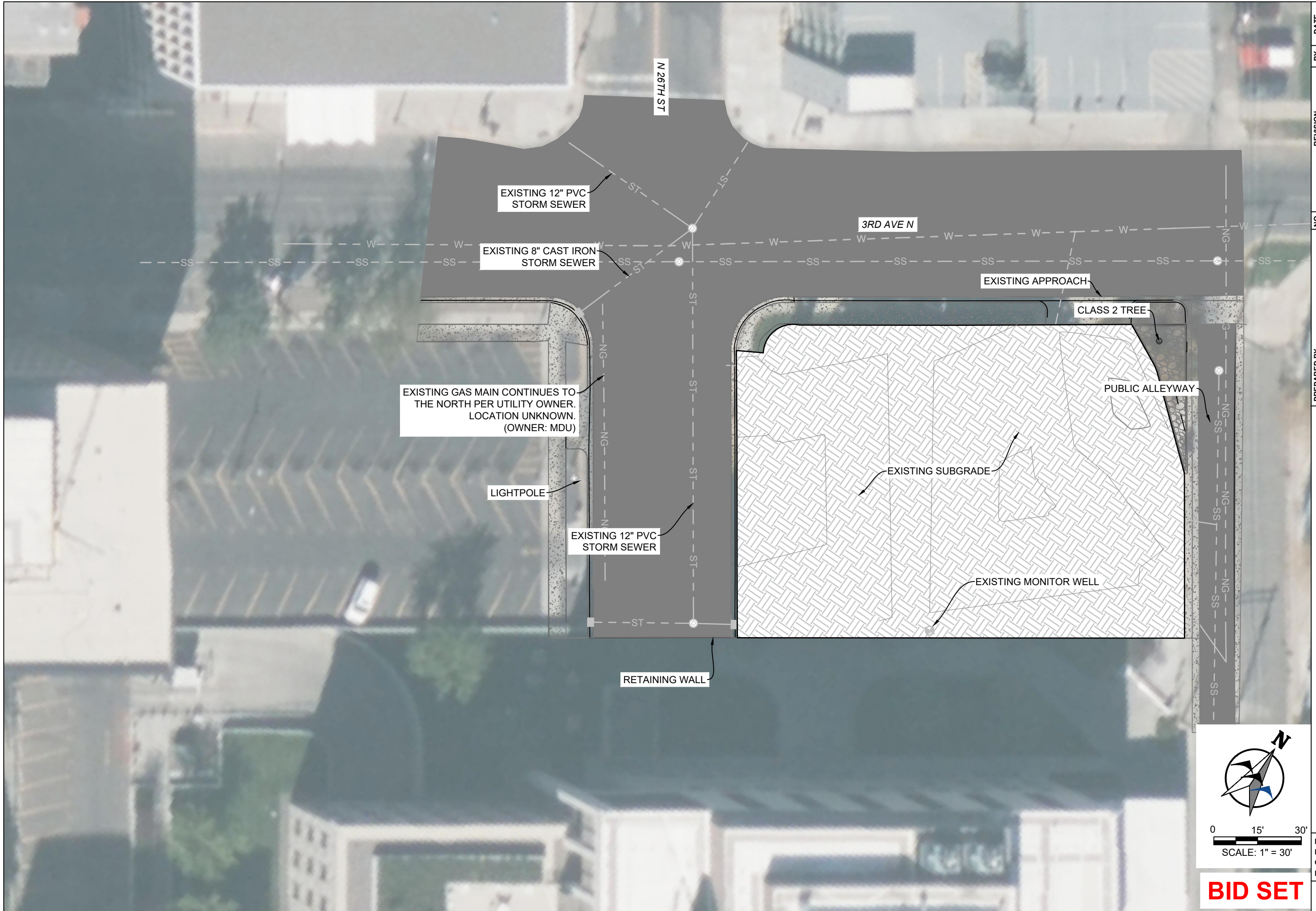
LINE STYLE LEGEND

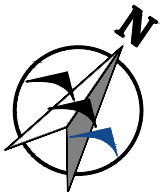
EXISTING	PROPOSED	
		MAJOR CONTOUR
		MINOR CONTOUR
		OVERHEAD TELEPHONE
		OVERHEAD POWER
		NATURAL GAS
		IRRIGATION LINE
		FIBER OPTIC
		FORCEMAIN
		FENCE [CHAIN]
		FENCE [BARBED]
		FENCE [PRIVACY]
		FIRE LINE
		OVERHEAD TV
		RAW WATER
		SEWER
		STORM
		UNDERGROUND POWER
		UNDERGROUND TELEPHONE
		UNDERGROUND TV
		WATER

BID SET

NO.	REVISION	BY	DATE
<p>PREPARED BY WWC ENGINEERING 550 S. 24TH ST. W., SUITE 201 BILLINGS, MT 59102 (406) 894-2210 www.wwcengineering.com</p>			
<p>YELLOWSTONE COUNTY COURTHOUSE PARKING LOT DESIGN GENERAL NOTES BILLINGS, MT</p>			
DESIGNED BY: <u>SMC</u>			SHEET 2
DRAWN BY: <u>ZSL</u>			
CHECKED BY: <u>GTR</u>			
DATE: <u>7/7/2023</u>			
PROJECT NO. 2023-198			

K:\Billings\Yellowstone County\2023-198 Round Building Parking Lot Design\05CAD\Sheets\plans\23198-EXST-LYOT.dwg EXST LYOT 7/7/2023 8:21:58 AM





 0 15' 30'

 SCALE: 1" = 30'

BID SET

NO.	REVISION	BY	DATE

PREPARED BY  **WWC** ENGINEERING
 550 S. 24TH ST. W., SUITE 201
 BILLINGS, MT 59102
 (406) 894-2210
 www.wwcengineering.com

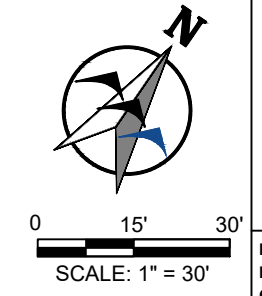
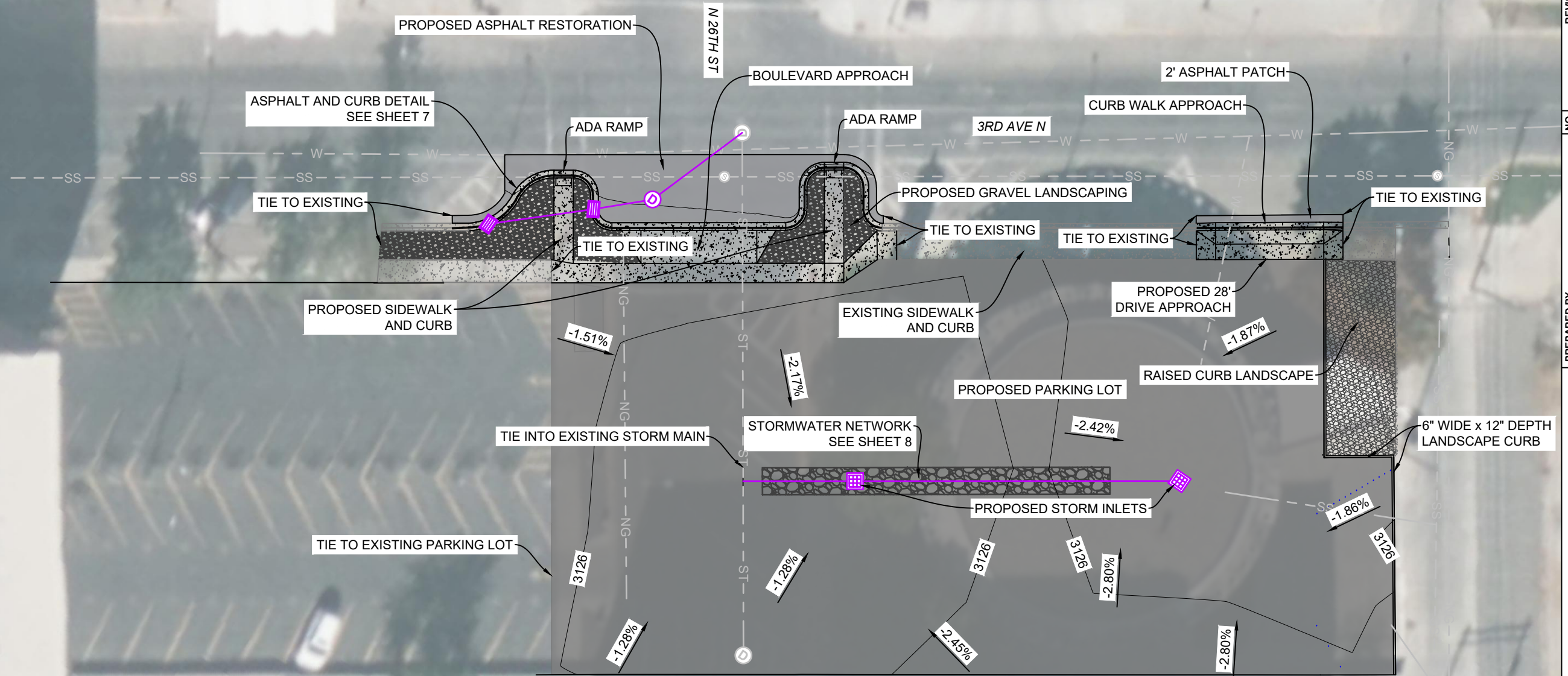
YELLOWSTONE COUNTY
COURTHOUSE PARKING LOT DESIGN
EXISTING OVERVIEW
 BILLINGS, MT

DESIGNED BY: SMC
 DRAWN BY: ZSL
 CHECKED BY: GTR
 DATE: 7/7/2023

SHEET
3

PROJECT NO. 2023-198

K:\Billings\Yellowstone County\2023\198 Round Building Parking Lot Design\05\CAD\Sheet\plans\23198-PROP-LYOT.dwg PROP-LYOT 3 7/7/2023 8:21:49 AM



BID SET

NO.	REVISION	BY	DATE

PREPARED BY
 **WWC** ENGINEERING
 550 S. 24TH ST. W., SUITE 201
 BILLINGS, MT 59102
 (406) 894-2210
 www.wwcengineering.com

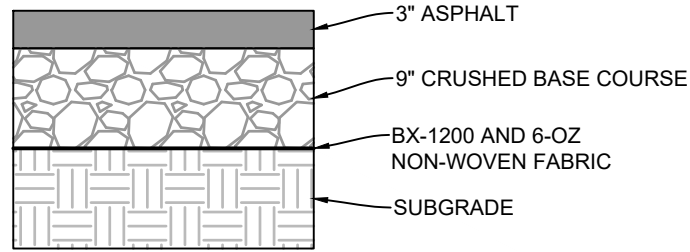
YELLOWSTONE COUNTY
 COURTHOUSE PARKING LOT DESIGN
PROPOSED SITE LAYOUT
 BILLINGS, MT

DESIGNED BY: SMC
 DRAWN BY: ZSL
 CHECKED BY: GTR
 DATE: 7/7/2023

SHEET
5

PROJECT NO. 2023-198

K:\Billings\Yellowstone County\2023\198 Round Building Parking Lot Design\05\CAD\Sheets\plans\23198-ASPH-GRAD.dwg ASPH GRADING 7/7/2023 8:21:55 AM



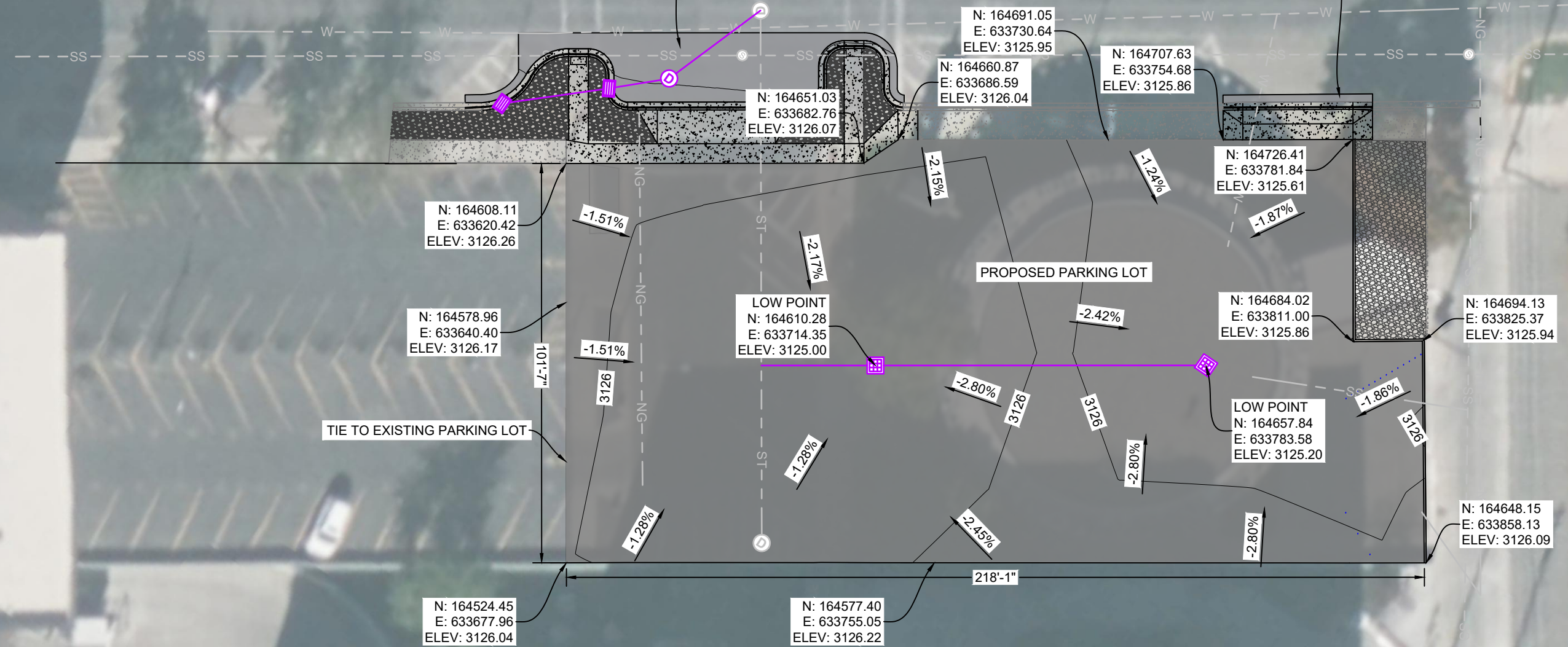
ASPHALT TYPICAL SECTION
NOT TO SCALE

PROPOSED ASPHALT RESTORATION
SEE SHEET 7

N 26TH ST

3RD AVE N

2' ASPHALT PATCH
SEE SHEET 7

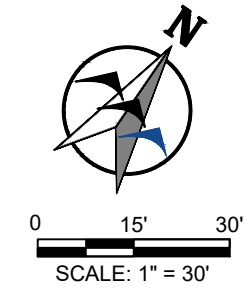


PREPARED BY
WVC ENGINEERING
550 S. 24TH ST. W., SUITE 201
BILLINGS, MT 59102
(406) 894-2210
www.wvcengineering.com

YELLOWSTONE COUNTY
COURTHOUSE PARKING LOT DESIGN
PARKING LOT GRADING SHEET
BILLINGS, MT

NO.	REVISION	BY	DATE

PROJECT NO. 2023-198

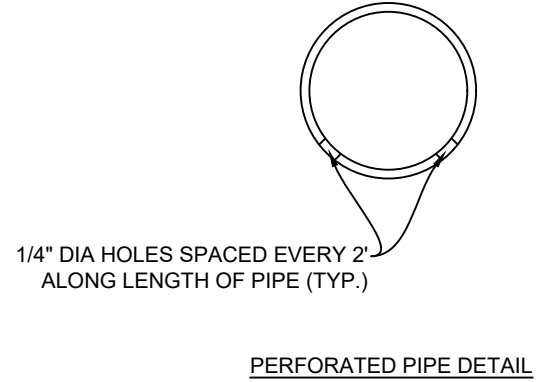
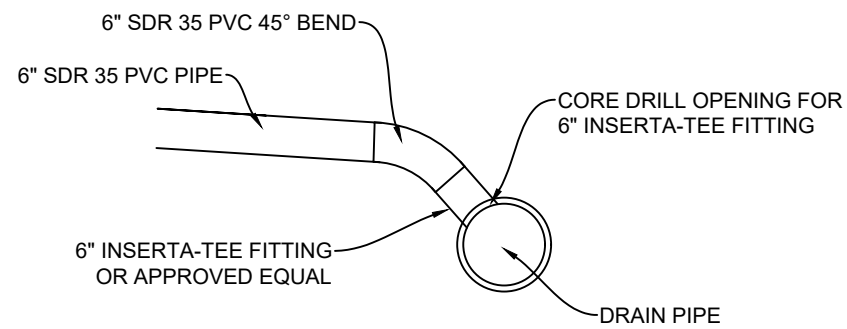
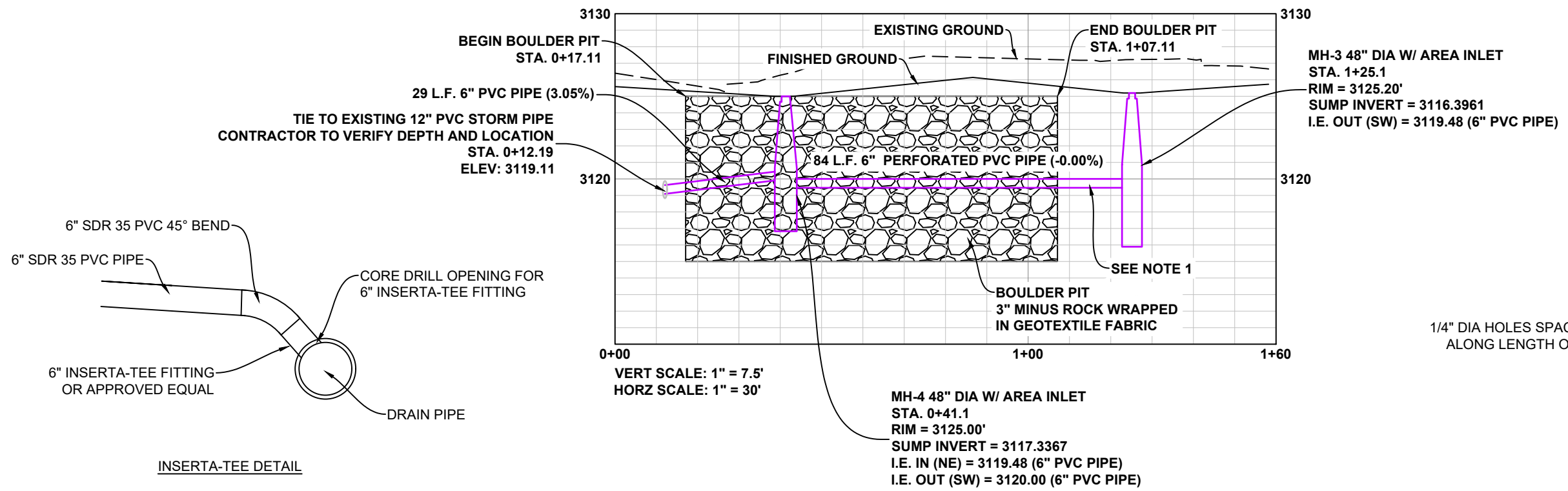
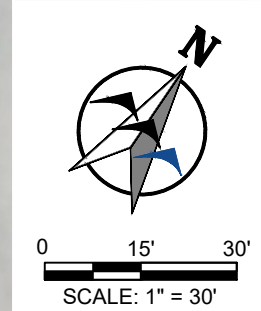
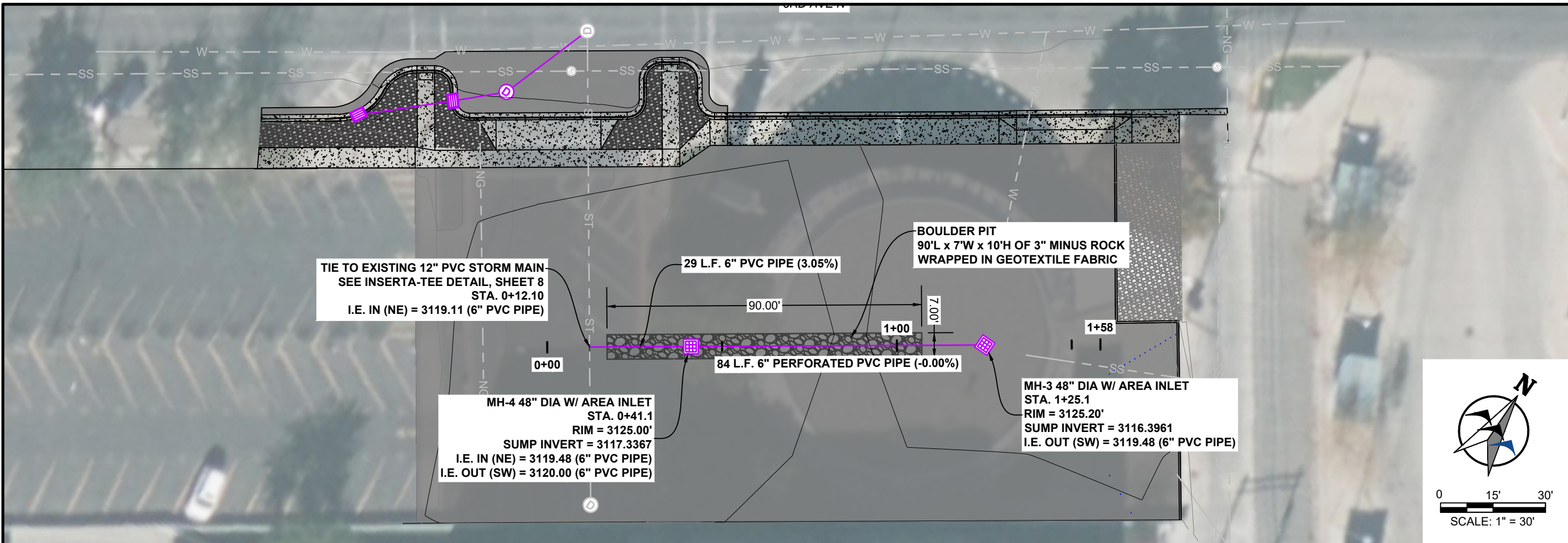


NOTE:
ELEVATION BASED ON EDGE OF PAVEMENT (EOP) UNLESS OTHERWISE DESCRIBED.

BID SET

DESIGNED BY: SMC
DRAWN BY: ZSL
CHECKED BY: GTR
DATE: 7/7/2023
SHEET
6

K:\Billings\Yellowstone County\2023198 Round Building Parking Lot Design\05CAD\Sheets\plans\set2\198-STRM-PP.dwg PARKING LOT DRAINS 7/7/2023 8:30:40 AM



NOTES:
1. PIPE LOCATED OUTSIDE OF BOULDER PIT EXTENTS SHALL BE NON-PERFORATED.

BID SET

NO.	REVISION	BY	DATE

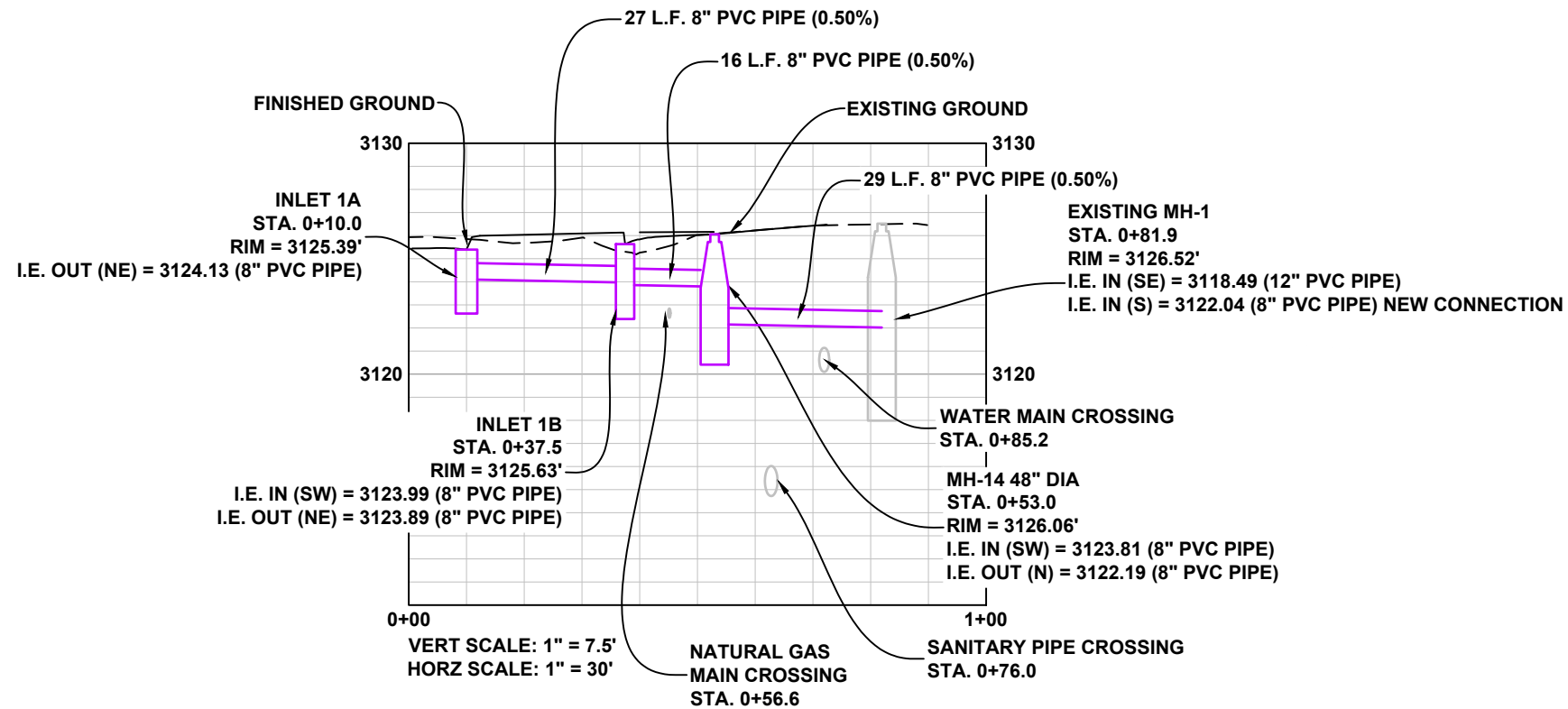
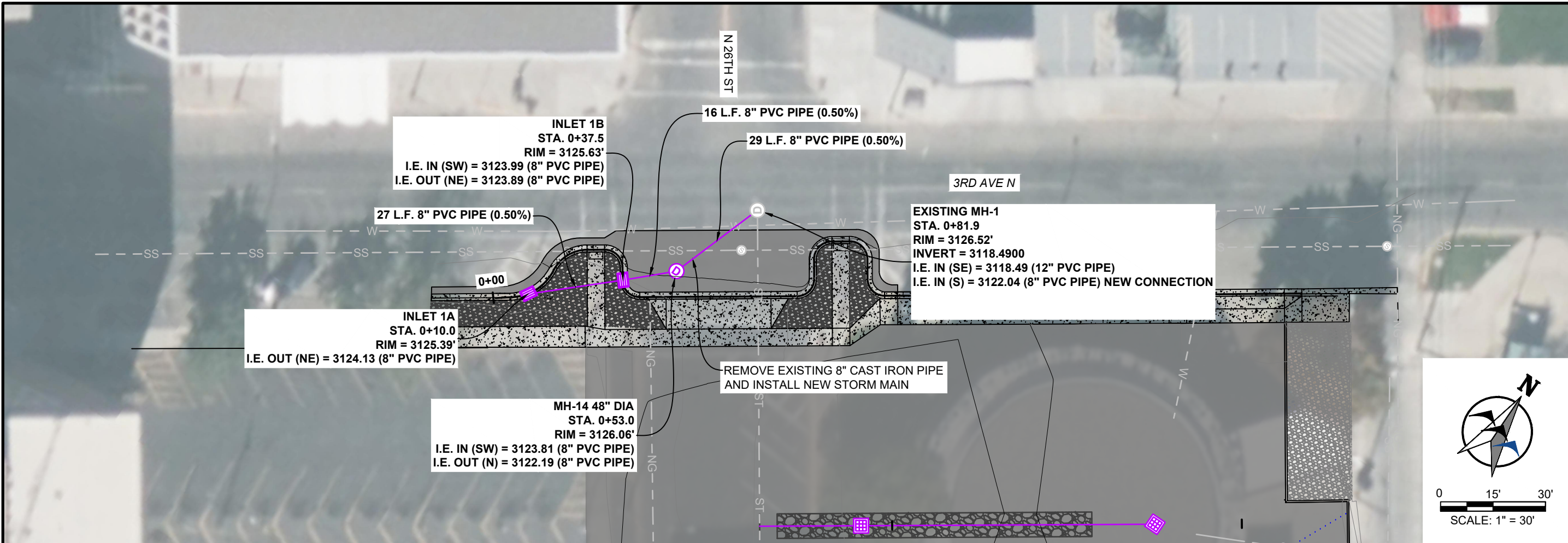
PREPARED BY
WWC ENGINEERING
550 S. 24TH ST. W., SUITE 201
BILLINGS, MT 59102
(406) 894-2210
www.wwcengineering.com

PROJECT NO. 2023-198

YELLOWSTONE COUNTY
COURTHOUSE PARKING LOT DESIGN
STORMWATER PLAN AND PROFILE
BILLINGS, MT

DESIGNED BY: SMC
DRAWN BY: ZSL
CHECKED BY: GTR
DATE: 7/7/2023

K:\Billings\Yellowstone County\2023\198 Round Building Parking Lot Design\05CAD\Sheets\plansheet\23198-STRM-PP.dwg CURB DRAINS 7/7/2023 8:30:40 AM



NOTE:

1. CONTRACTOR TO VERIFY DEPTH AND LOCATION OF EXISTING WATER, SEWER, AND GAS MAIN PRIOR TO ORDERING PRE-CAST MATERIALS.
2. CURB INLETS TO BE 2' x 3' TYPE II.
3. CONTRACTOR TO CORE INTO EXISTING MH-1 FOR NEW CONNECTION. CONTRACTOR SHALL GROUT AND SEAL OLD HOLE AS NECESSARY.

BID SET

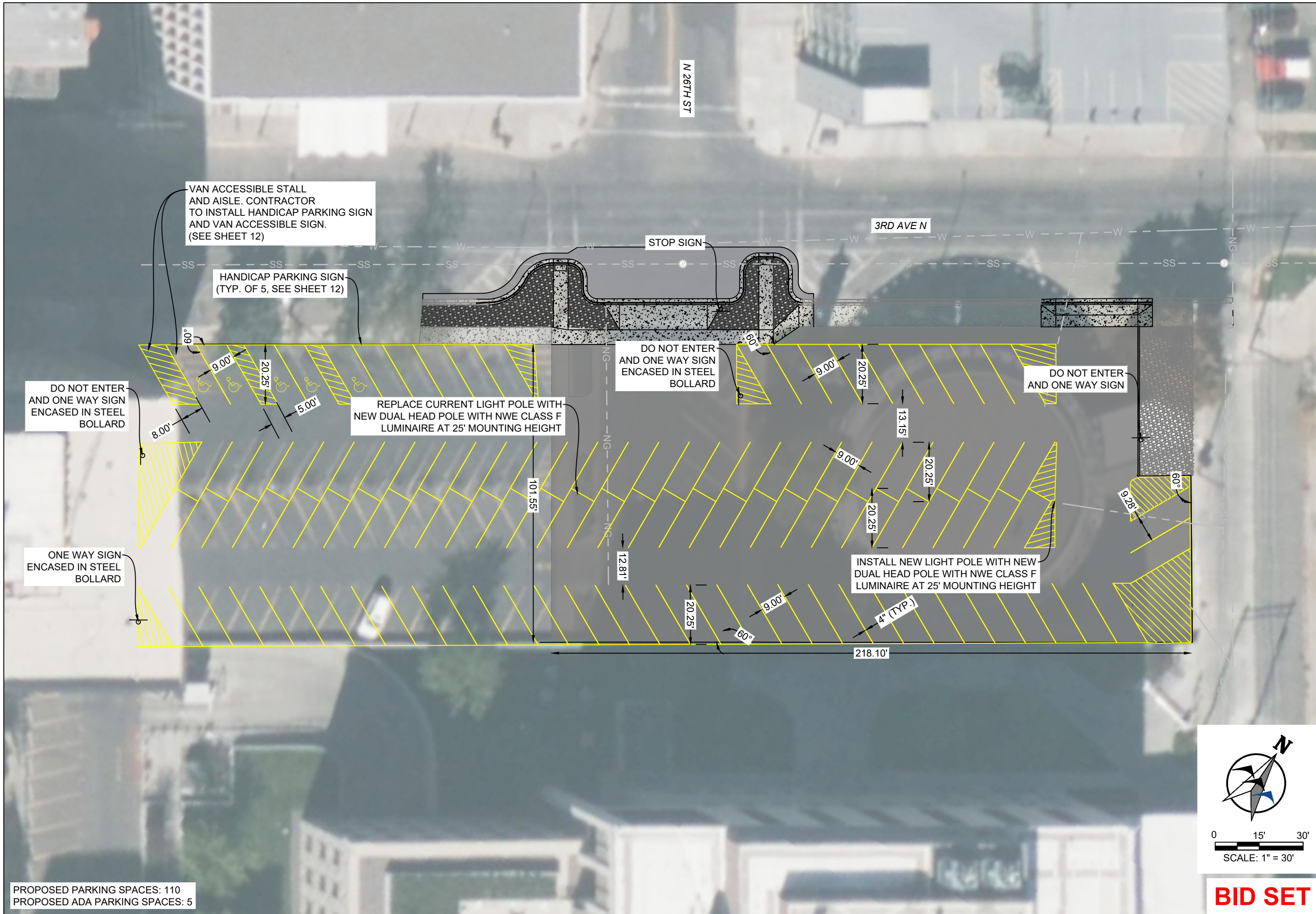
NO.	REVISION	BY	DATE

PREPARED BY
WWC ENGINEERING
 550 S. 24TH ST. W., SUITE 201
 BILLINGS, MT 59102
 (406) 894-2210
 www.wwcengineering.com

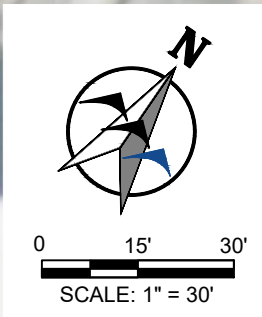
YELLOWSTONE COUNTY
 COURTHOUSE PARKING LOT DESIGN
STORMWATER PLAN AND PROFILE
 BILLINGS, MT

DESIGNED BY: SMC
 DRAWN BY: ZSL
 CHECKED BY: GTR
 DATE: 7/7/2023

K:\Billings\Yellowstone County\2023\198 Round Building Parking Lot Design\06CAD\Sheets\plans\set\23 198-STRIPING.dwg STRIPING 7/7/2023 8:21:38 AM



PROPOSED PARKING SPACES: 110
 PROPOSED ADA PARKING SPACES: 5



BID SET

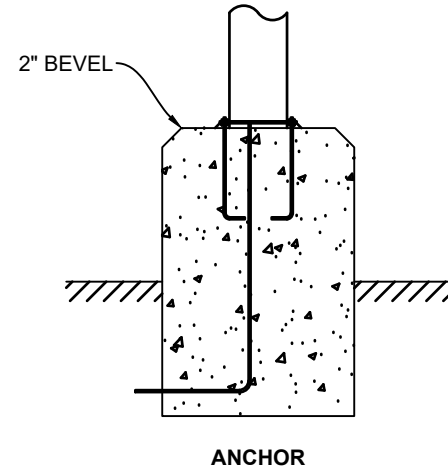
NO.	REVISION	BY	DATE

PREPARED BY
WVC ENGINEERING
 550 S. 24TH ST. W., SUITE 201
 BILLINGS, MT 59102
 (406) 894-2210
 www.wvcengineering.com

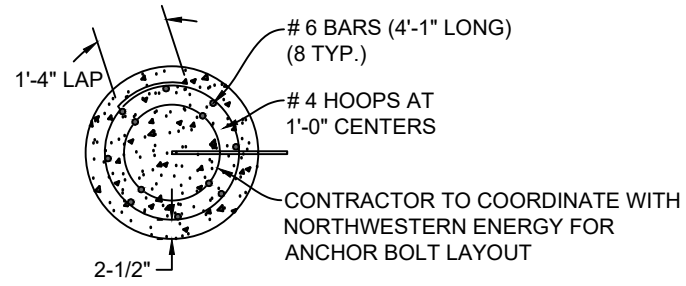
YELLOWSTONE COUNTY
 COURTHOUSE PARKING LOT DESIGN
STRIPING SHEET
 BILLINGS, MT

DESIGNED BY: SMC
 DRAWN BY: ZSL
 CHECKED BY: GTR
 DATE: 7/7/2023
 SHEET
10

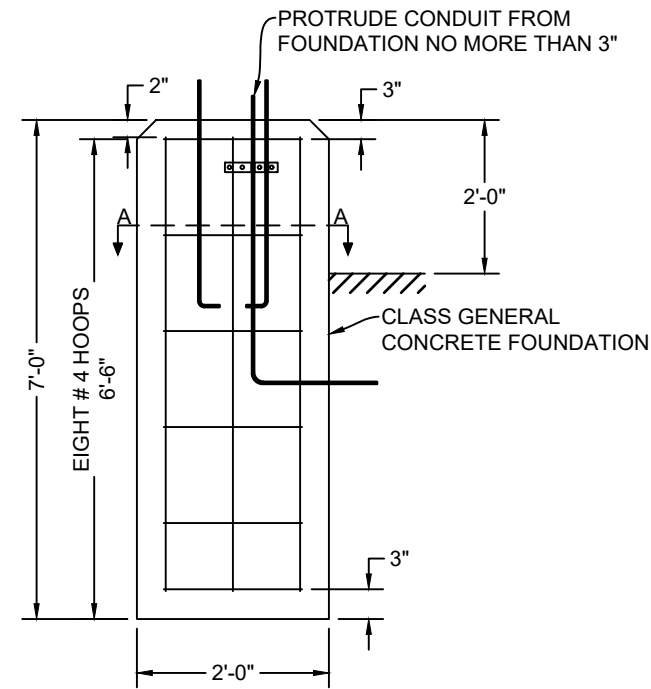
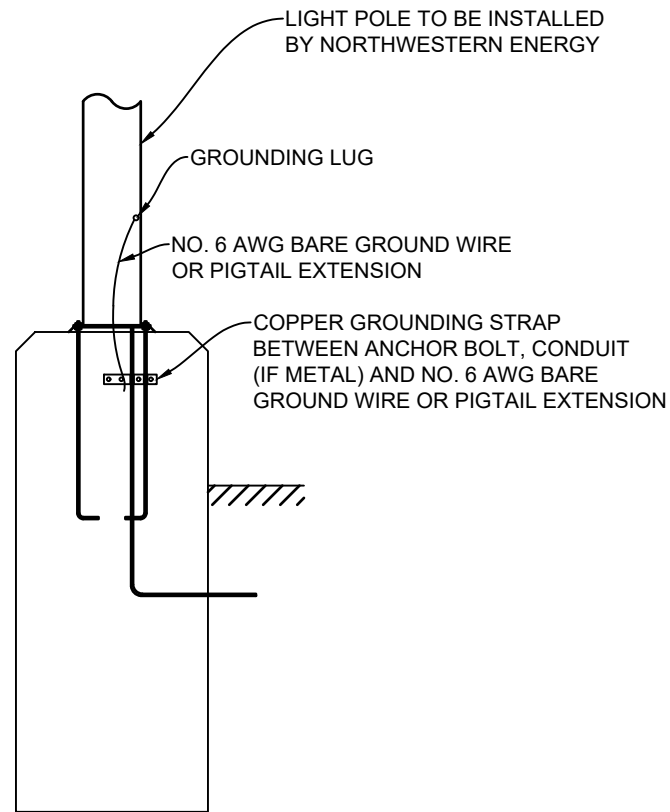
PROJECT NO. 2023-198



ANCHOR
SECTION A-A
NOT TO SCALE



SECTION A-A
NOT TO SCALE



TYPICAL OF ALL FOUNDATIONS
NOT TO SCALE

NOTE:
CONTRACTOR TO COORDINATE LIGHT POLE INSTALL WITH NORTHWESTERN ENERGY. LIGHT POLE BASE TO BE INSTALLED BY NORTHWESTERN ENERGY. NORTHWESTERN ENERGY TO DETERMINE IF WIRING TO BE VIA CONDUIT OR OVERHEAD LINES AND CONTRACTOR TO PROVIDE CONDUITS WITHIN POLE BASE AS NECESSARY.

PREPARED BY
WVC ENGINEERING
550 S. 24TH ST. W., SUITE 201
BILLINGS, MT 59102
(406) 894-2210
www.wvcengineering.com

YELLOWSTONE COUNTY
COURTHOUSE PARKING LOT DESIGN
LIGHT POLE BASE DETAIL
BILLINGS, MT

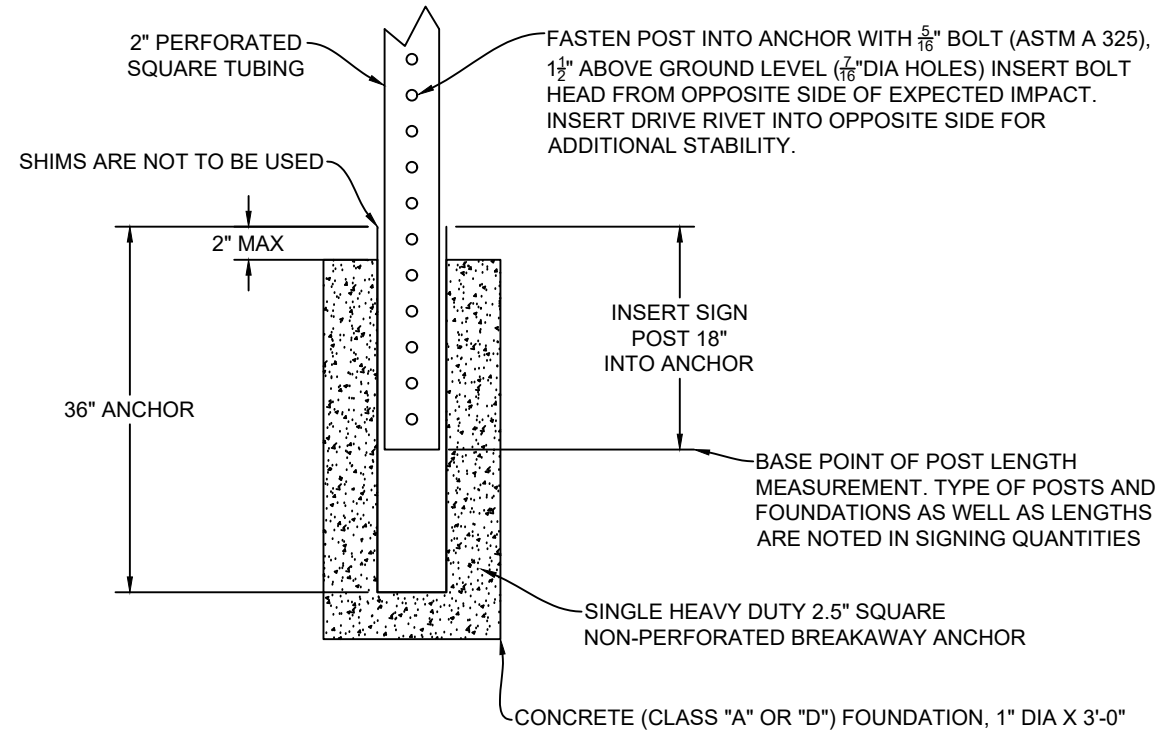
DESIGNED BY: SMC
DRAWN BY: ZSL
CHECKED BY: GTR
DATE: 7/7/2023

SHEET
11

BID SET

NO.	REVISION	BY	DATE

PROJECT NO. 2023-198



SUPPORT AND CORRESPONDING ANCHOR					
SUPPORT			ANCHOR		
TUBE SIZE	WEIGHT	WALL THICKNESS	TUBE SIZE	WEIGHT	WALL THICKNESS
2"	2.42 LBS/FT	0.105" (12 GAGE)	2.5"	18.36 LBS EA	3/16"

NOTE:

1. USE CONCRETE CLASS "A" OR "D" WITH WOOD FLOAT FINISH ON TOP. FORM TOP 6" OF FOUNDATION.
2. GALVANIZE PIPE PER AASHTO M [1].
3. PAINT PIPE WITH ONE SHOP COAT AND ONE FIELD COAT OF ZINC RICH BASED PAINT, AS SPECIFIED IN THE MONTANA DEPARTMENT OF TRANSPORTATION'S STANDARD SPECIFICATIONS SECTION 710 ON ALL SURFACES NOT IN CONTACT WITH CONCRETE.
4. CONFORM STEEL PIPE TO THE REQUIREMENTS OF ASTM A53 TYPE E OR S, GRADE B.

1
12 SIGNPOST FOUNDATION DETAIL
NOT TO SCALE

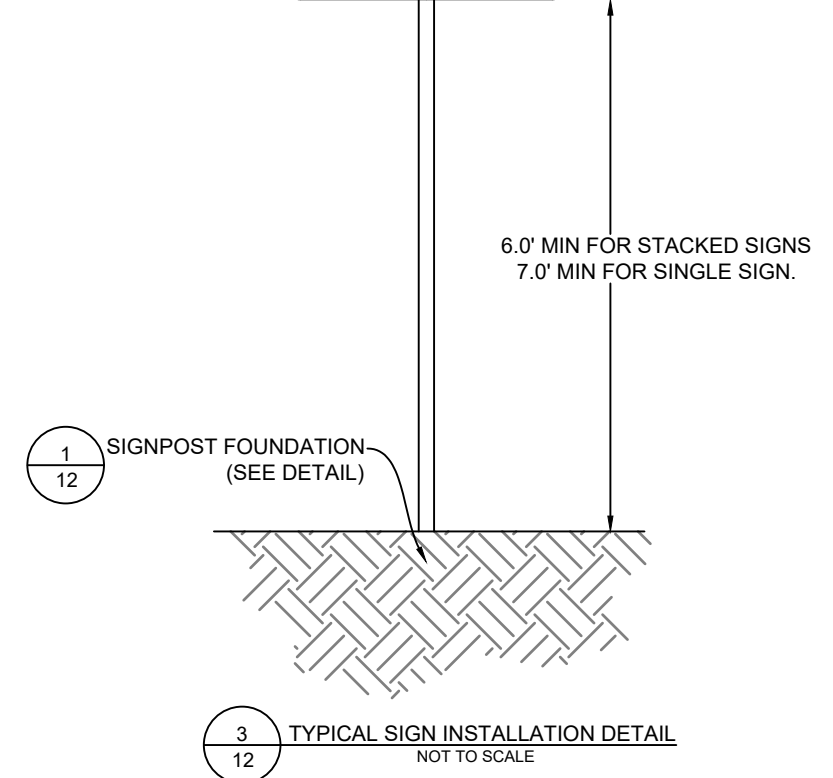
R7-8
RESERVED PARKING
2
12 HANDICAPPED PARKING DETAIL
NOT TO SCALE

R7-8p
VAN ACCESSIBLE
4
12 VAN ACCESSIBLE DETAIL
NOT TO SCALE

R5-1
DO NOT ENTER
5
12 DO NOT ENTER DETAIL
NOT TO SCALE

R6-2
ONE WAY
6
12 ONE WAY DETAIL
NOT TO SCALE

R1-1
STOP
7
12 STOP SIGN DETAIL
NOT TO SCALE



3
12 TYPICAL SIGN INSTALLATION DETAIL
NOT TO SCALE

PREPARED BY
WWC ENGINEERING
550 S. 24TH ST. W., SUITE 201
BILLINGS, MT 59102
(406) 894-2210
www.wwcengineering.com

YELLOWSTONE COUNTY
COURTHOUSE PARKING LOT DESIGN
SIGNAGE DETAILS
BILLINGS, MT

DESIGNED BY: SMC
DRAWN BY: ZSL
CHECKED BY: GTR
DATE: 7/7/2023