



2023 ANNUAL REPORT

hello@bigskyrail.org
www.bigskyrail.org



BSPRA

ST PASSENGER RAIL



Empire Builder



VISION

To lead the expansion and enhancement of passenger rail service throughout Montana and the greater northwest region for the development of economic, environmental, social, and comprehensive benefits, now and into the future.

MISSION

To provide for the reestablishment of safe, reliable, and sustainable passenger rail service across southern Montana that increases opportunity and contributes to the health and well-being of people across the state and beyond.



**BIG SKY
PASSENGER
RAIL AUTHORITY**

ABOUT THIS REPORT

To support BSPRA's efforts to restore passenger rail service across southern Montana, we would invite you to **take direct action**. There are multiple ways you can help us achieve our goals. To learn more about how you can **support BSPRA**, visit our website at www.bigskyrail.org. At the top of the home page hover over the "Get Involved" menu tab and several link options you can click to follow will appear.



From here you can download and send a letter to your congressional representatives to encourage them to support the restoration of passenger rail service. Or sign up to join our mailing list to stay up-to-date with what BSPRA is doing. Or sign up to become a BSPRA volunteer. Or explore our online shop that's full of some great and unique merchandise, and every purchase goes to support our efforts to restore passenger rail service across Montana's southern tier. Or you can make a direct cash donation. There are many ways you can help support our goals, so we encourage you to visit our website today and choose the one that best suits you.

ALL ABOARD MONTANA!

CHAIRMAN'S MESSAGE

Welcome to our inaugural annual report of the Big Sky Passenger Rail Authority (BSPRA)! We convened our first board meeting in January 2021, during the height of the COVID-19 pandemic. We hit the ground running and over the past two years we've built a nationally respected organization that has put us on the cusp of restoring passenger rail service through southern Montana and beyond. Not only did we help write portions of the Bipartisan Infrastructure Law, which is why discontinued Amtrak routes across the country are now being analyzed for restoration, but that legislation contains resources to implement renewed service. I say renewed because we're not merely looking to restore exactly what existed in the 1970s but, rather, to create excellent passenger rail service that Montanans need and deserve in the 21st century.

In a world where political rancor and acrimony is the rule and not the exception, we've demonstrated the possibility of a different path. BSPRA is 20 counties strong, stretching from Idaho to North Dakota and including three tribal nations, BNSF Railway, Amtrak, and the Montana Department of Transportation. The partners associated with BSPRA span the political, ideological, demographic, and geographic spectrum. We've shown how local governments can catalyze big change, and that something like passenger rail can be a touchstone for agreement, knitting our state and nation back together again.

This year, 2023, is proving to be the singular most important year for passenger rail in over four decades—certainly since we lost the North Coast Hiawatha in 1979. In 2024, the Federal Railroad Administration will make recommendations to Congress on which long-distance passenger rail routes to restore or new ones to create. And we are doing everything in our power to ensure that Montana and the Greater Northwest Region of America are represented on that list. To do so, we need your continued help and involvement, which you'll learn more about in this report. Together, we can do this. All aboard!

Dave Strohmaier
BSPRA Board Chair

BSPRA IS 20 COUNTIES STRONG, STRETCHING FROM IDAHO TO NORTH DAKOTA AND INCLUDING THREE TRIBAL NATIONS, BNSF RAILWAY, AMTRAK, AND THE MONTANA DEPARTMENT OF TRANSPORTATION.



OFFICERS



Dave Strohmaier
CHAIR



Jason Stuart
VICE-CHAIR



Mary Hensleigh
SECRETARY



Jerry McDonald
TREASURER

COUNTIES & DIRECTORS



Tina Toyne
Big Horn County



Darrel Folkvord
Broadwater County



Dan Olsen
Butte-Silver Bow



Scott Miller
Carbon County



Kevin Krausz
Custer County



Jason Stuart
Dawson County



Scott MacFarlane
Gallatin County



Elena Gagliano
Granite County



Mary Hensleigh
Jefferson County



Steve Stanley
Lake County



Diane Magone
Mineral County



Dave Strohmaier
Missoula County



Bill Berg
Park County



Terry Jennings
Powell County



Dennis Teske
Prairie County



Bob Lee
Rosebud County



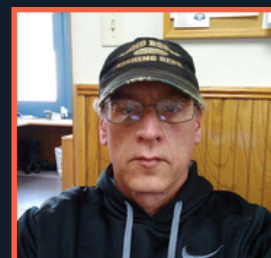
Jerry McDonald
Sanders County



Tyrel Hamilton
Stillwater County



Ruth Baker
Treasure County



Edward Anderson
Wibaux County

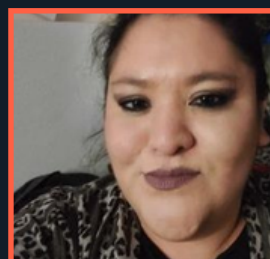
EX-OFFICIO DIRECTORS



Martin Charlo
CSKT



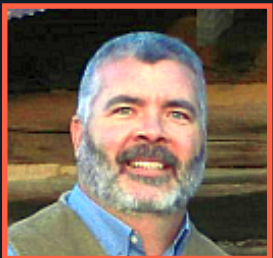
Norma Gourneau
Northern Cheyenne Tribe



Luella Brien
Crow Tribe



Jim Tylick
BNSF Railway



Rob Stapley
Montana
Department of
Transportation



Chase Kitchen
Amtrak

MEET THE EXECUTIVE DIRECTOR

Greetings fellow Big Sky Passenger Rail Authority supporters,

It's a pleasure to meet you on paper, and I look forward to connecting with you in person. Like many of you, my ties to passenger rail in Montana run deep. My great grandmother on my mom's side, Lenna Grebe, homesteaded in Sumatra, Rosebud County in 1915. Like many in her day, she was a focused and resilient individual that relied on passenger rail to help develop their homestead. According to my great uncle, "in the Spring of 1916 she shipped her horse, a cow and personal belongings from Stickney, SD to the homestead near Sumatra." From there she and her husband built a life of work and family in Eastern Montana. There are several references to the train trips between Stickney, SD, Billings, MT and the homestead.

No surprise, my first official out of state sightseeing trip occurred via rail transport. In elementary school, my folks drove to the train station in Malta. We traveled from Malta by rail to Chicago, IL to visit relatives of great grandmother Lenna. It was my first out of state travel and I loved every minute of it. Rail made it more exciting. Since then, I have been able to share this cherished experience with my daughters, traveling via passenger rail on the Atlantic coast.

Rail is affordable, efficient, and always a fun experience. It is the perfect way to take in the countryside and actually enjoy the trip. I could not be more enthused and optimistic to embark on this exciting journey of bringing passenger rail to Southern Montana. Our rural and urban communities alike will benefit from passenger rail. In a connected world, we grimace at the look of our inbox after spending a day or two on the road. Imagine keeping up with your work, taking in our stunning Montana views and not sweating the icy roads or construction. Whether you are tribal member looking to connect with tourists seeking to purchase your Native crafts or traveling for your job, a rural resident seeking a simpler way to get to town for medical appointments, or just looking to have a more fulfilling travel experience—Big Sky Passenger Rail Authority is your place to get involved!

Thank you, board members and volunteers. As you look over this report you will see – it's all coming together. If this is the first you are learning about all this...find a way to get involved, build support in your community, and stay engaged via social media.

All Aboard! Let's make passenger rail in southern Montana a reality– with your help we'll make it better and more successful!

Sincerely,

Jess Peterson
Big Sky Passenger Rail
Executive Director

**I COULD NOT BE MORE ENTHUSED
AND OPTIMISTIC TO EMBARK ON THIS
EXCITING JOURNEY OF BRINGING
PASSENGER RAIL TO SOUTHERN
MONTANA.**



EXECUTIVE MANAGEMENT TEAM



Jess Peterson
Executive Director



Maggie Tupper
Office Services Manager



Allison Corbyn
Partnerships



Lia Biondo
Gov't Relations



Mary Jo Foley
Communications
& Membership



Kelly Fogarty
Events & Operations



Kristen Albers
Chief Financial Officer



TIMELINE

Over the more than two years since it was formed, BSPRA has hit several milestones and seen several successes in advancing our goal of restoring passenger rail service through southern Montana. Among the major highlights/achievements for BSPRA are:



November 2020 – BSPRA officially founded by initial 12 member counties



January 2021 – First BSPRA board meeting



May 2021 – BSPRA recognized with the National Association of Counties 2021 National Achievement Award in Transportation



August 2021 – First BSPRA Annual Conference held in Lewistown



November 2021 – Congress enacts the historic Bipartisan Infrastructure Law, including BSPRA's recommended language for a federal study of expanding Amtrak long-distance passenger rail service across the nation—with an emphasis on serving rural America

RESTORING PASSENGER RAIL TO SOUTHERN MONTANA AND BEYOND

Traveling through seven states, Amtrak's North Coast Limited/Hiawatha connected Chicago, Illinois to Seattle, Washington. Operating for more than 80 years, the discontinuation of this line in 1979 severed access to passenger rail to the largest cities in Montana and North Dakota and small towns in between. As a result, a vast expanse of the Greater Northwest Region lacks passenger rail service.

The benefits of restored service are many. Today, more than 2,000 miles from the Great Lakes to the Pacific and 800 miles from Great Falls to Denver no longer have access to passenger rail service. It's time to provide passenger rail service to all of America.

TIMELINE



August 2022 – BSPRA, with regional partners, creates, organize and hosts the first-ever Greater Northwest Passenger Rail Summit in Billings, bringing together federal, state, local, tribal and host railroad officials to discuss the restoration and improvement of passenger rail services across the Greater Northwest region



March 2023 – Treasure County becomes the 20th Montana county to join BSPRA



March 2023 – BSPRA submitted a Corridor ID Program application to the Federal Railroad Administration to conduct service development planning for the North Coast Hiawatha route



April 2023 – BSPRA awarded a \$25,000 grant from the Montana Healthcare Foundation to conduct rural/tribal engagement meetings across the state

THE BENEFITS OF RESTORING PASSENGER RAIL

- Creates jobs
- Transform the economy of Montana and the Greater Northwest—benefitting rural, tribal, and urban communities alike
- Provides affordable, safe, clean transportation year-round for healthcare, education, commerce, and tourism along the North Coast Hiawatha route
- Upgrades rail lines for freight and passenger service

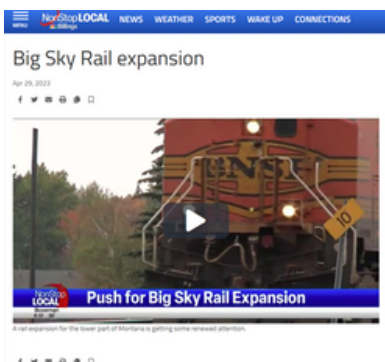
HIGHLIGHTS

In addition to those specific milestones, BSPRA has, since its founding, maintained a strong presence and following amongst media outlets. News about BSPRA and its work is not just regularly featured in print, radio and TV news stories from Montana and North Dakota media outlets, but has regularly been featured in major national media outlets and has even found its way into publications from around the globe. In its short history, BSPRA has quickly become one of the most prominently featured organizations in media stories concerning efforts to expand or improve America's passenger rail network. Some of our more recent major headlines include:

1

Push for Big Sky Rail Expansion

From Bradley Warren and KULR8 News, this video coverage includes a conversation with Senator Jon Tester about the Infrastructure Investment and Jobs Act, Amtrak, rural America having a seat at the Amtrak Board of Directors table, and the efforts of Big Sky Passenger Rail, including the recent Montana Healthcare Foundation \$25,000K grant.



2



In Rural Montana, a Hope That Biden Will Reopen the Rails ~*The New York Times*

"Residents of the very rural parts of the state have to travel 175 miles to get on a plane or to seek medical services," said David Strohmaier, a Missoula County commissioner who is one of those behind the newly formed Big Sky Passenger Rail Authority to raise money and lobby for a return to passenger rail in southern Montana. "Rural communities see it as an economic development opportunity but also as a social lifeline for residents who might not have any other means to travel long distances for necessities."

3

Big Sky Passenger Rail Authority receives \$25,000 grant for rural, tribal engagement

The Big Sky Passenger Rail Authority is pleased to announce it has been awarded a \$25,000 grant by the Montana Healthcare Foundation to conduct passenger rail community engagement in three rural and three tribal communities in southern Montana. Tribal nations include the Confederated Salish and Kootenai Tribes, Crow Tribe, and Northern Cheyenne Tribe.

Big Sky Passenger Rail Authority receives \$25,000 grant for rural, tribal engagement



4

Amtrak, Big Sky Passenger Rail explore service connections

The Big Sky Passenger Rail Authority and its county members across the state joined Amtrak in a call this week regarding the agency's "Throughway" service — the various tools the railroad uses to bring remote riders to a train stop.



5

Push continues for restoring passenger rail to southern Montana *(The Montana Standard)*

"This is the largest investment in passenger rail since Amtrak's creation, 50 years ago, and will create safe, efficient and climate-friendly alternatives for moving people and freight," the fact sheet declared.



6

KFGM Missoula Community Radio Interview

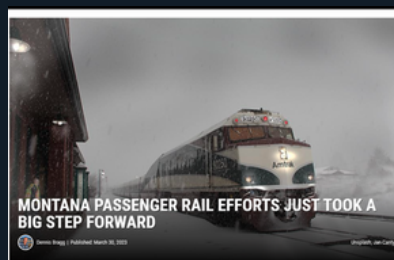
Muse Talk Radio's Becca Kelley talks for 90 minutes with Big Sky Passenger Rail Authority Chairman and Missoula County Commissioner, Dave Strohmaier and Fundraising Chair and citizen volunteer, Dan Bucks about restoring the North Coast Hiawatha to southern Montana and beyond.



7

Montana Passenger Rail Efforts just took a big step forward

Efforts to make it possible for you to travel by train across Montana's "Southern Route" are taking a big step forward this week, with the request for the federal government to launch a rail corridor study.



GET INVOLVED.

BSPRA serves as proof-positive of the incredible influence volunteers can have in driving projects and public policy. Volunteers have played a critical role in the BSPRA since its foundation and continue to do so today. Our branding and our website were developed by volunteers. Our social media engagement and outreach is directed by volunteers. Without the passionate involvement and support of our volunteers, the inaugural Greater Northwest Passenger Rail Summit in 2022 would not have been possible. Volunteers serve across our committees and in some cases even lead committees that oversee critical areas for BSPRA like fundraising. There are so many ways, both big and small, that you as an individual can help lend a hand towards restoring passenger rail service through southern Montana. The BSPRA may be leading the way as an organization, but we and our efforts are only as strong as the people supporting us.





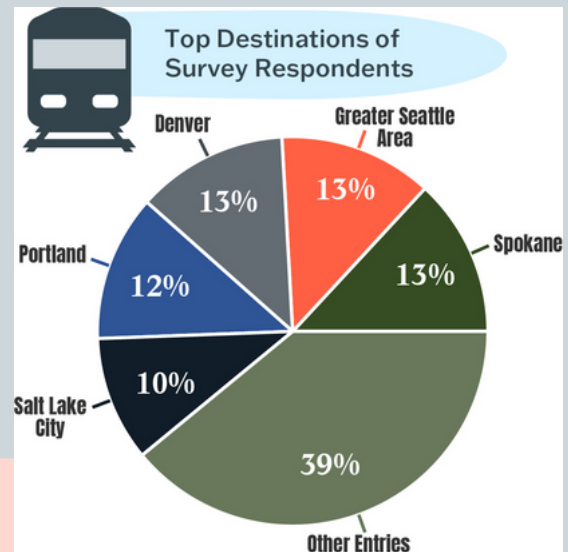
PUBLIC ENGAGEMENT

ENGAGING TRIBAL & RURAL COMMUNITIES IN THE DEVELOPMENT OF PASSENGER RAIL SERVICES IN SOUTHERN MT.

In 2023, BSPRA received a grant from the Montana Healthcare Foundation (MHCF) to conduct public outreach with the purpose of better understanding the nature and significance of renewal of service along the previous North Coast Hiawatha route as it pertains to the economic and social well-being (“social determinants of health”) for residents in the rural and tribal communities along the rail corridor. BSPRA held public meetings in six communities, including three in tribal/reservation communities. All meetings offered a virtual attendance option. In addition, following meetings, an online survey was provided to all attendees allowing for additional feedback and for distribution to others who were unable to attend any of the scheduled meetings.

Transcripts of the meeting recordings, a summary report of the survey responses, and some specific comments from meetings can be found in the Public Engagement Report.

OVER 90 PERCENT OF ATTENDEES/RESPONDENTS WERE ENTHUSIASTICALLY IN SUPPORT OF THE REINSTATEMENT OF PASSENGER RAIL SERVICES.



IMPACT SNAPSHOT

6

MEETINGS CONDUCTED

3

MEETINGS IN TRIBAL/RESERVATION COMMUNITIES

98

SURVEY RESPONDENTS





PROJECTED IMPACT

BSPRA proposes renewing passenger service on the former route of the North Coast Hiawatha (NCH) with trains running twice daily in each direction between Chicago and Seattle/Portland—traversing southern Montana and North Dakota along the way. The route will welcome global and national visitors to 500 miles of the scenic grandeur of the Rocky Mountains, to Mt. Rainier and Mt. Hood and—in combination with the Empire Builder—Yellowstone, Glacier, Theodore Roosevelt, North Cascades, and Olympic National Parks. The NCH will transform the economy of the Greater Northwest region, revitalizing rural communities and tribal nations and providing access for underserved citizens to health care, education, other services, and civic resources often unreachable in winter when highways become unreliable or hazardous. The NCH route will serve as a key catalyst for creating or renewing other passenger rail routes in the American West and Canada including north-south routes running from the Empire Builder at Shelby, MT through (a) Billings to Denver and (b) Butte to Salt Lake City—and will help reawaken a 21st century rail renaissance in western North America.

BSRPA FINANCIAL SUMMARY

\$271,611 DONATIONS RECEIVED

\$25,000 IN GRANT FUNDING

"By working together, we can renew and expand passenger service in Montana and to all directions beyond "

Big Sky Passenger Rail Authority

Profit and Loss

July - August, 2023

	TOTAL
Income	
360000 Miscellaneous Revenue	
362000 Other Miscellaneous Revenue	
39200 Printful Sales	520.54
Total 362000 Other Miscellaneous Revenue	520.54
365000 Contributions & Donations	
39000 Member Contributions & Donations	6,227.00
39001 General & Other Contributions	1,742.29
39003 Municipal Contributions	6,750.00
Total 365000 Contributions & Donations	14,719.29
365006 Fundraising Revenue - Annual Conference	2,760.00
Total 360000 Miscellaneous Revenue	17,999.83
Total Income	\$17,999.83
GROSS PROFIT	\$17,999.83
Expenses	
430000 Public Works	
430400 Transit Systems	
200 Supplies	
210 Office Supplies	88.00
Total 200 Supplies	88.00
300 Purchased Services	
311 Postage	41.13
331 AD/Legal Publications	50.35
335 Dues & Memberships	1,185.00
345 Phone Basic	182.00
357 Contracted Services-Executive Mgmt/Accounting	13,000.00
370 Travel Expenses	
371 General Travel Expenses	1,181.26
Total 370 Travel Expenses	1,181.26
377 Annual Conference Expenses	3,562.86
Total 300 Purchased Services	19,202.60
500 Fixed Charges	
505 Printful Charges	408.60
560 Software Maintenance/Support	993.88
Total 500 Fixed Charges	1,402.48
510 Liability Insurance	5,779.00
700 Grants, Contributions, Indemnities & Other	
701 Montana Healthcare Foundation Grant Expenses	1,836.43

-These financial statements and financial information have not been subjected to an audit or review or compilation engagement, and no assurance is provided on them.

-Financial statements and financial information is prepared on a modified cash basis.

-Management has elected to omit substantially all of the disclosures and the statements of stockholder's equity and cash flows required by accounting principles generally accepted in the United States.

Big Sky Passenger Rail Authority

Profit and Loss
July - August, 2023

	TOTAL
Total 700 Grants, Contributions, Indemnities & Other	1,836.43
800 Other Objects	
804 Bank Fees	192.52
805 Summit Expenses	2,000.00
Total 800 Other Objects	2,192.52
Total 430400 Transit Systems	30,501.03
Total 430000 Public Works	30,501.03
Unapplied Cash Bill Payment Expense	-5,248.09
Total Expenses	\$25,252.94
NET OPERATING INCOME	\$ -7,253.11
Other Income	
370000 Interest Earned	20.59
Total Other Income	\$20.59
NET OTHER INCOME	\$20.59
NET INCOME	\$ -7,232.52

-These financial statements and financial information have not been subjected to an audit or review or compilation engagement, and no assurance is provided on them.

-Financial statements and financial information is prepared on a modified cash basis.

-Management has elected to omit substantially all of the disclosures and the statements of stockholder's equity and cash flows required by accounting principles generally accepted in the United States.

Big Sky Passenger Rail Authority

Balance Sheet

As of August 31, 2023

	TOTAL
ASSETS	
Current Assets	
Bank Accounts	
101001 First Interstate Checking (0532)	109,873.38
Total Bank Accounts	\$109,873.38
Total Current Assets	\$109,873.38
TOTAL ASSETS	\$109,873.38
LIABILITIES AND EQUITY	
Liabilities	
Current Liabilities	
Credit Cards	
202200 Mastercard (5156)	-736.72
202201 Mastercard (3481)	478.43
Total Credit Cards	\$ -258.29
Total Current Liabilities	\$ -258.29
Total Liabilities	\$ -258.29
Equity	
271000 Unreserved Fund Balance	16,548.98
Retained Earnings	100,815.21
Net Income	-7,232.52
Total Equity	\$110,131.67
TOTAL LIABILITIES AND EQUITY	\$109,873.38

-These financial statements and financial information have not been subjected to an audit or review or compilation engagement, and no assurance is provided on them.

-Financial statements and financial information is prepared on a modified cash basis.

-Management has elected to omit substantially all of the disclosures and the statements of stockholder's equity and cash flows required by accounting principles generally accepted in the United States.

DONORS

THANK YOU FOR YOUR GENEROUS SUPPORT.
2022-2023 BUSINESS & ORGANIZATION PARTNERS

TRANSCONTINENTAL BUILDER
\$25,000



RAIL DIRECTOR
\$10,000



ENGINEER
\$5,000



SIEMENS



DONORS



THANK YOU FOR YOUR GENEROUS SUPPORT. 2022-23 GOVERNMENTAL PARTNERS

MEMBER COUNTY CONTRIBUTIONS

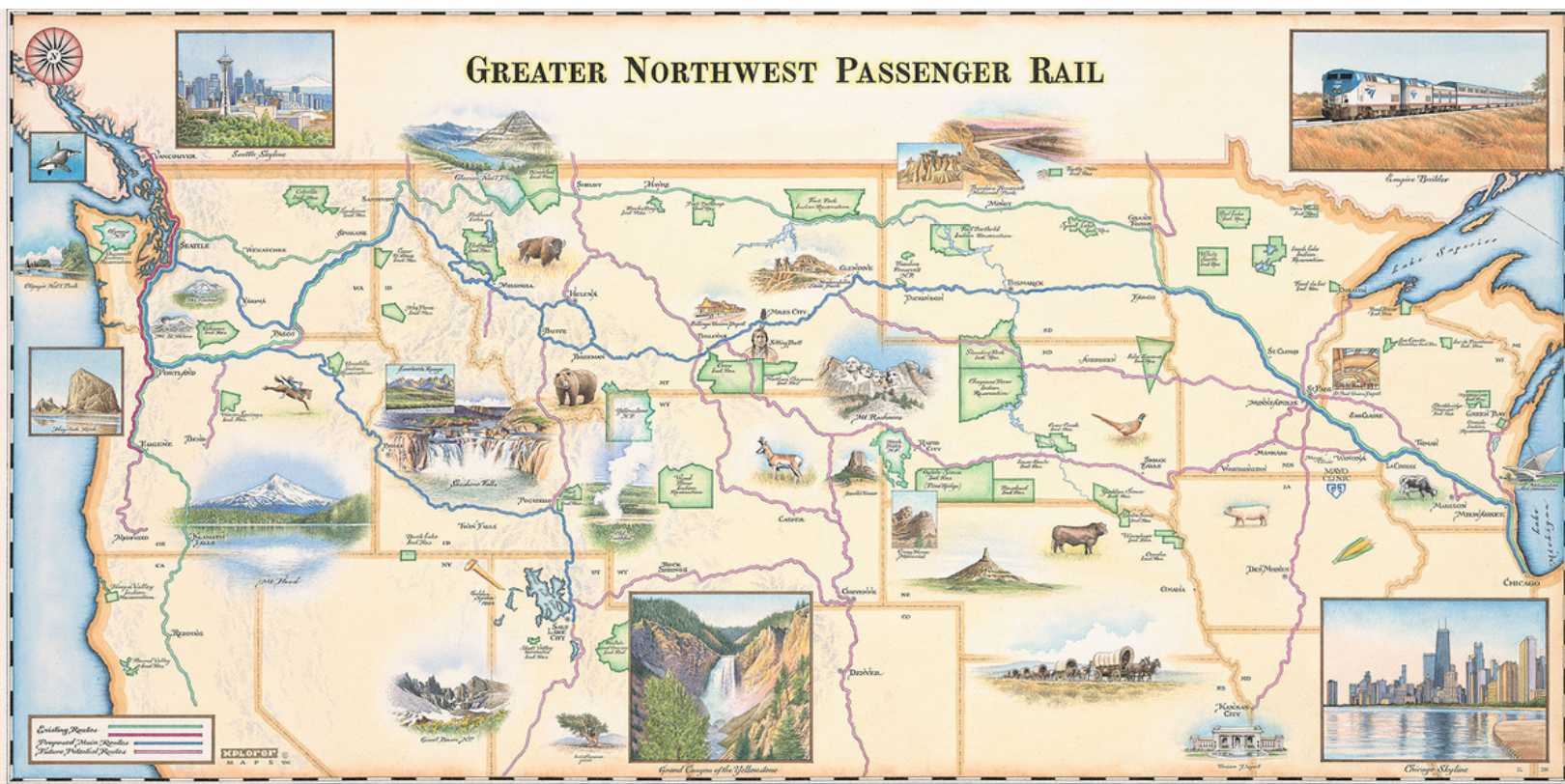
- | | | |
|-----------------|-------------------|------------------|
| Big Horn County | Broadwater County | Butte-Silver Bow |
| Custer County | Dawson County | Gallatin County |
| Granite County | Jefferson County | Missoula County |
| Park County | Powell County | Sanders County |

OTHER LOCAL GOVERNMENT CONTRIBUTIONS

- Lewis and Clark County
- Dawson County Tourism Improvement District
- Dawson County Economic Development Council

MUNICIPAL PARTNERS

- | | | |
|------------|------------|----------------|
| Bearcreek | Forsyth | Philipsburg |
| Bridger | Glendive | Polson |
| Colstrip | Lavina | Three Forks |
| Deer Lodge | Livingston | Whitehall |
| Drummond | Missoula | Thompson Falls |





THANK YOU FOR YOUR GENEROUS SUPPORT. EVENT SPONSORS

2023 BSPRA ANNUAL CONFERENCE

BUTTE—AUGUST 2023

Copper Level (\$1,000)

NorthWestern Energy
Dorsey & Whitney LLP

Gold (\$500)

BNSF Railway
Visit Southwest Montana Bus Tour

THREE FORKS CONFERENCE (*FORTHCOMING*)

Hilltop Securities, Inc.
Stifel Public Finance

GREATER NORTHWEST PASSENGER RAIL SUMMIT

BILLINGS, MT—AUGUST 2022

Platinum (\$4,000)

Jacobs

Gold (\$3,000)

HDR

Silver (\$2,000)

American Association of Private Railroad Car Owners - AAPRCO

Bronze (\$1,000)

All Aboard Washington

Dorsey & Whitney

BNSF Railway

NorthWestern Energy

City of Boise

Quandel Consultants, Inc.

DJ&A

Washington Corps - Montana Rail Link

Supporter (\$500)

Association of Oregon Rail and Transit Advocates

Granite Peak Environmental

Community Planning Association of Southwest

Missoula Metropolitan Planning Organization

Idaho (COMPASS)

Mountain Line

David Evans & Associates

Utah Rail Passengers Association

First Interstate Bank

2021 BSPRA ANNUAL CONFERENCE

LEWISTOWN—AUGUST 2021

Quandel Consultants

KLJ

Jacobs

HDR



THANK YOU FOR YOUR GENEROUS SUPPORT.

\$10000+

Bridger Aerospace

\$2500+

Bill Berg
Heather Jernberg

\$1000+

Mary Hensleigh
Red Oxx MFG. INC

\$500+

Jason Parry
Kim Whittemore
Michael Schwab Studios
Rimrock Art and Frame
Strohmaier for Commissioner

LESS THAN \$500

Aimee McQuilkin
Alex Philp
Allen Hart
Andrew Czorny
Anne S Hausrath
August Wageman
Barbara Jones
Barb Thoman
Barry E Green
Bradley Layton
Brigitta Lee
Caleb Shalz
Chad Lavachek
Charlene Woodcock
Charles Largay
Charles Wambeke
Cielo Maca
Colleen Casey
Dan Bucks
Dave Courtney
Dave Strohmaier
David Nice
Deanna Bockness
Deborah Hanson
Diane Magone
Douglas Nichols
Doug Rand
Duncan Lutes
Elena Gagliano

Forsyth Chamber of Commerce
Fredrick Bunt
Gary Moline
Gary Wirt
Jackson Scholl
Jacob Simonich
James Prete
James Tilley
Jay and Janet Cornish
Jean Dahlman
Jef Jourdan
Jerome (Jerry) McDonald
Jill Deppel
Jon Ellingson
John Wolverton
Juan Sanchez
Judy Lavachek
Kathleen McCart
Kent Smith
Lawrence DiNardo
Leopold Wetula
Linda Bicknell
Lynn Redding
Mark Bayuk
Mark Somerville
Marshall Swearingen
Matthew Parker
Maxwell Milton
Michael Sweet
Mitchell Golf

Montana Silversmiths
Nan Jackson
Paul Pacini
Paula Grieb
Peter Reiss
Philipsburg Brewing Company
Quinn's Hot Springs Resort
Ralph Zimmer
Richard Bakker
Richard Bruss
Richard Newman
Richard VanAken
Rick Ponthan
Rickey D Clevenger
Robert Thaden
Robin Biffle
Roger DiBrito
Russ Fletcher
Sean Callahan
Shawn Swift
Stephen Goss
Sue Lawrence
Susan Connor
Suzie Nakasian
Tenney Ford
Thure Johnson
Timothy Toohey
Tom Sharratt
Vicki Watson
Violet Plummer



BSPRA COMMITTEES

One of the best ways to support BSPRA is to join one of our committees as a citizen volunteer. All of our committees with the exception of the Executive Committee have several citizen volunteers who serve on them. Here is a short list of each committee, the committee chairman, and the work that each committee does:



Communications Committee (chairman, Jason Stuart) – drives communications and public outreach about the BSPRA and its work



Finance Committee (chairman, Jerry McDonald) – develops the annual budget and sets fiscal policies



Fundraising Committee (chairman, Dan Bucks) – creates and directs fundraising efforts and campaigns



Governance Committee (chairman, Rich Wallace) – drafts internal policies and procedures



Planning & Resource Development Committee (chairman, Dan Olsen) – assesses passenger rail infrastructure needs and operations

SIGN UP.

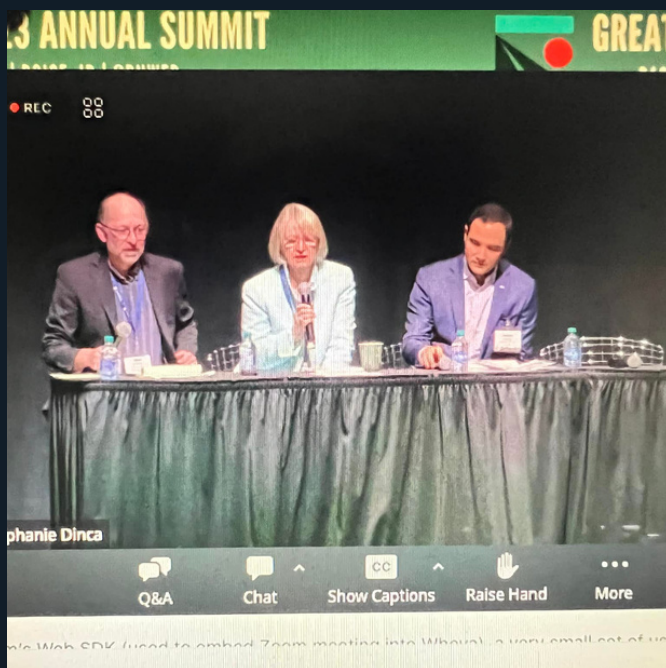
If you are interested in serving on any of the BSPRA committees, we would invite and encourage you to visit our website and fill out a volunteer form at www.bigskyrail.org/volunteer-signup. And of course signing up for a committee is not the only way to volunteer! Living in Montana is not a requirement-- We have volunteers from all over the country, lending their support to expand long-distance passenger rail service across Montana and beyond. Whether it's driving the local effort to have your county join BSPRA or assisting and supporting your county's BSPRA director with fundraisers and public awareness campaigns in your local community, there are so many ways that you can become involved and help BSPRA fulfill its mission of bringing passenger rail service back to southern Montana, and we hope you will consider lending your time and talents to our cause.

CLOSING THOUGHTS.

We hope this Annual Report has given you insight into BSPRA as an organization, our mission, our goals and our achievements to date. And we hope you will **join together** with us – whether as a business partner, an individual donor or a volunteer – to help us **achieve our goal** of delivering a transformational infrastructure project for Montana and the wider region. **By working together**, we can restore passenger rail service to southern Montana! And in doing so, we will breathe new economic life into our communities – urban, rural and tribal – provide our residents with a tremendous social benefit that raises the standard of living in every community it touches, lessen the wear and tear on our state highway system, and benefit our environment by reducing carbon emissions. There are few public projects projects of any kind that can have so much positive impact and benefit for so many people. This one can. So we say again:

All Aboard Montana!

As you consider your support for the BSPRA we'd like to let you know of some of the upcoming events we have, some of which you may be able to join either virtually or in person. The BSPRA holds its monthly board meetings on the second Wednesday of each month at 11 a.m. (MST). As a subdivision of Montana State Government, BSPRA is subject to Montana's open meeting laws and all of our full board and committee meetings are publicly noticed and posted on our website at www.bigskyrail.org. All members of the public are welcome to join in and listen as the BSPRA conducts its business.



CONTACT INFORMATION

 hello@bigskyrail.org

 www.bigskyrail.org

 (406) 624-5522



www.bigskyrail.org