



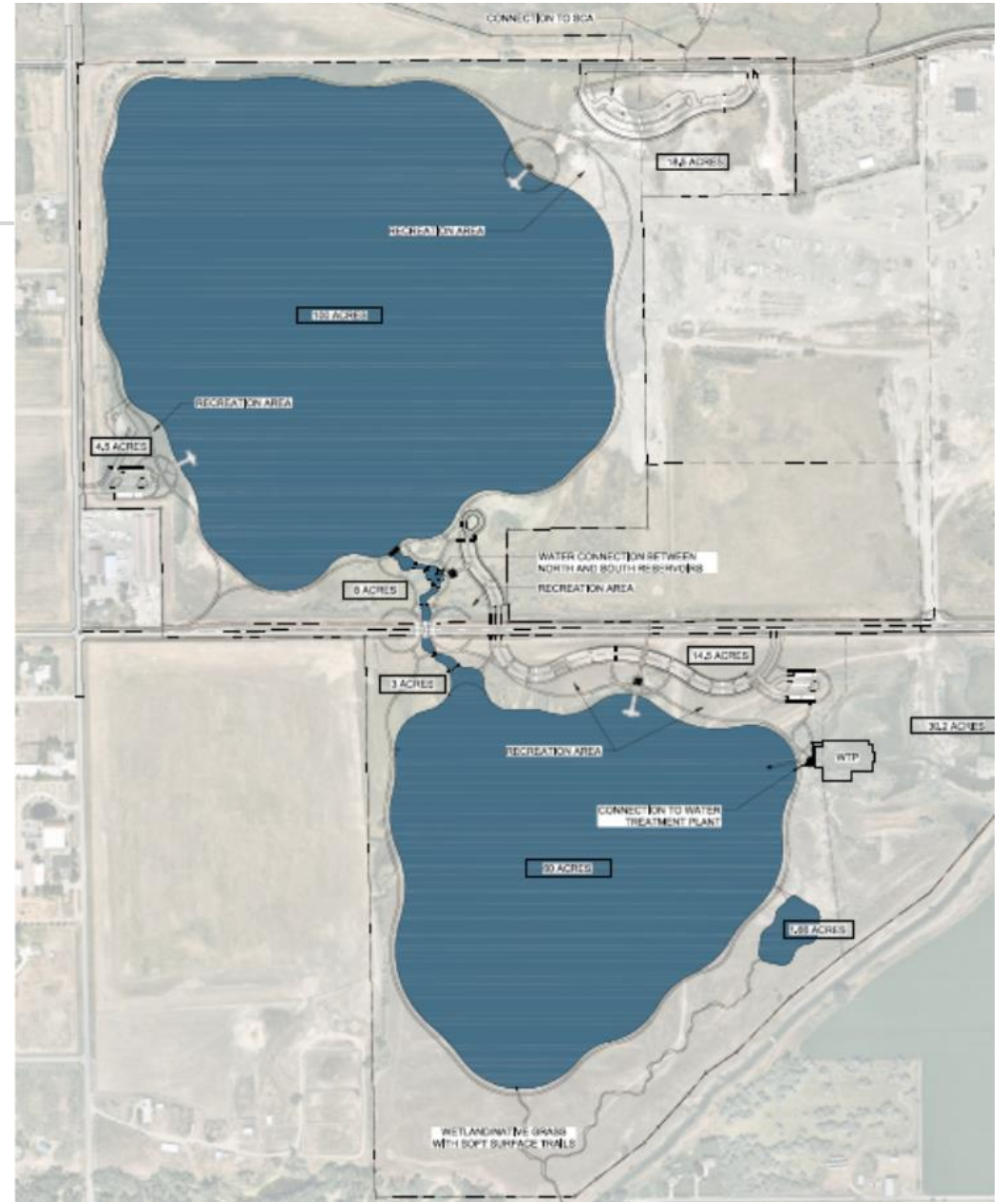
# Agreement with BBWA

Conveyance Option for West End Reservoirs

May 1, 2023

# West End Project

- Intake, Pump Station at Yellowstone
- Raw Water Pipeline **BBWA Canal**
- Reservoirs
- Water Treatment Plant
- Inflation!!



# Basis of Agreement

## Priority of water

- City after irrigators

## Capital Improvements

- Several structures

## Ownership and O&M

- BBWA for everything except City facilities

## Annual Fee

- Based on volume - \$150,000 per year (w/escalation)

## Water Rights

- City water rights

## Contract Duration

- 20 years with “escape” clauses

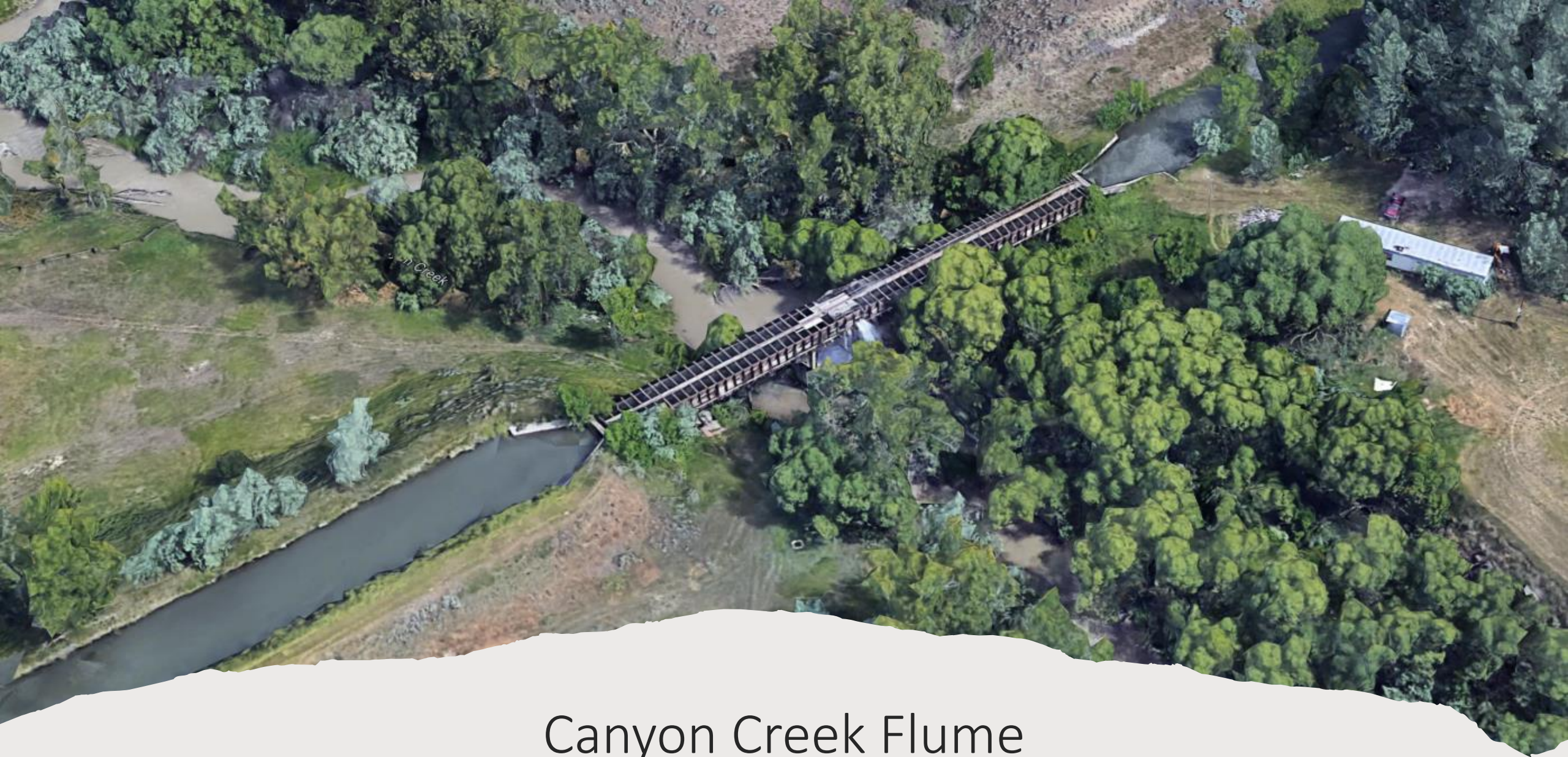
# Reservoirs



## Capital Improvements

- Headgate at River
- Canyon Creek Flume
- Diversion Structure
- Canal Lining





Canyon Creek Flume







# Diversion Structure



# Canal Lining

- Maximum capacity at river
- Substantial seepage
- City needs 30 cfs
- Grants for lining projects

# Pros and Cons



- Capital Cost
  - \$35M Intake/PS/Pipeline vs \$3M BBWA Canal
- O&M Cost
  - \$250k additional electric costs alone vs \$150k annual fee
- Offloader for BBWA
- Limited Operations in Winter
- Secondary User on BBWA

# Council Actions

May 8 – approve BBWA agreement

June – approve FY24 budget with \$3M O&M

FY 24 – approve receipt of disaster mitigation grant

FY24 – approve construction contracts

