

Special Improvement District Resolution

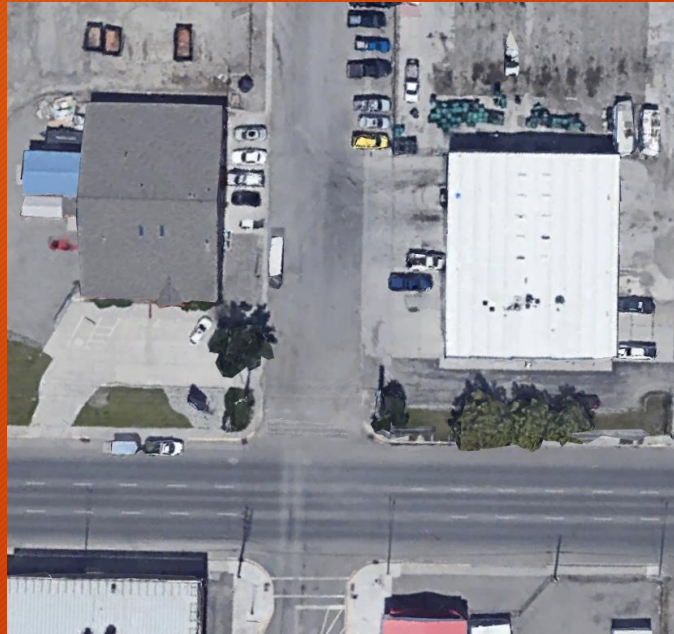
Street Construction

New Resolution
rescinds Resolution
No. 04-18204

Assessments

Existing Resolution

- Only those properties that are physically addressed are assessed



New Resolution

- Residential – addressed side and private improvements on non-addressed side
- Commercial/Industrial – all sides
 - Consistent with 18-10719

Design and Assessment Standards

Existing Resolution

- Defined widths
 - All residential street standard

New Resolution

- Refers to subdivision regulations
 - Residential – residential street standard
 - Commercial/Industrial - commercial street standard

Street Type	Right-of-Way	B-B Curb Width	Lane Width	Parking Width	Turn lane width	Median Width	Boulevard Width	Sidewalk Width
Principal Arterial	130'	64'-86' *	11'-12' **	---	14'	---	10'	5'/10' ***
Minor Arterial	100'	42'-66' *	12'	---	---	14'	10'	5'
Collector	74'	53'-39'	11'	8'	14'	---	5'	5'
Commercial Local Access	70'	44'-45'	13.5'	8'	14'	---	5'	5'
Residential Local Access	56'	34' min.	n/s	n/s	---	---	5'	5'
Cul-de-Sac 100—600 feet	56'	34' min.	n/s	n/s	---	---	5'	5'
Cul-de-Sac < 100 feet	40'	29' min.	n/s	n/s	---	---	---	---

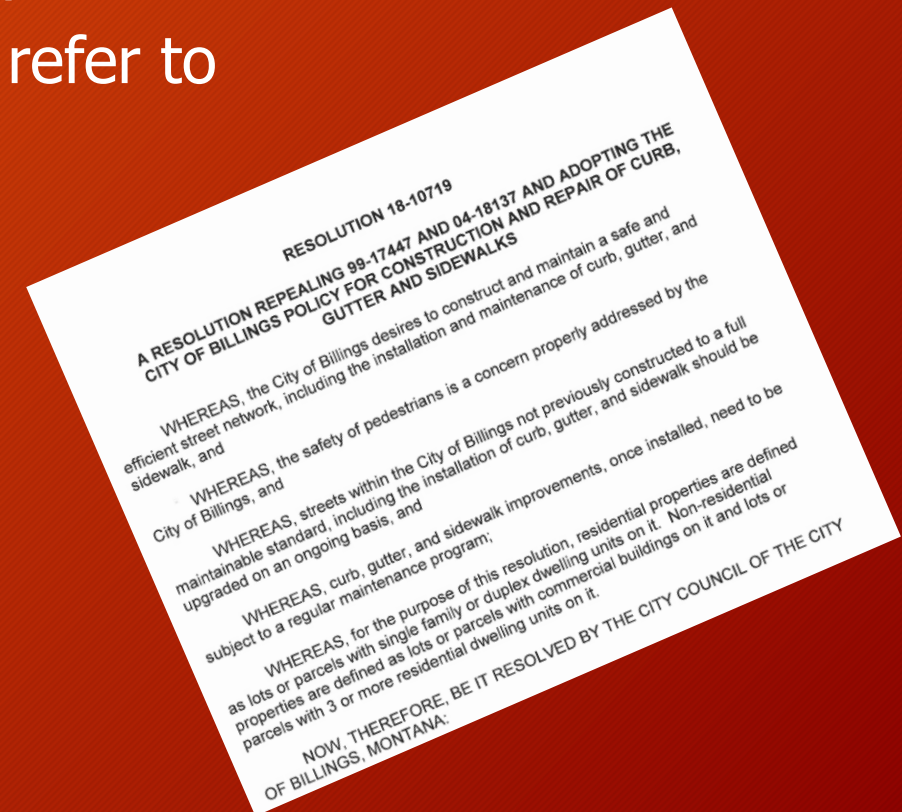
New and Existing Streets

Existing Resolution

- New and Existing Street construction

New Resolution

- New streets only
- Existing streets refer to Res. 18-10719



Questions

