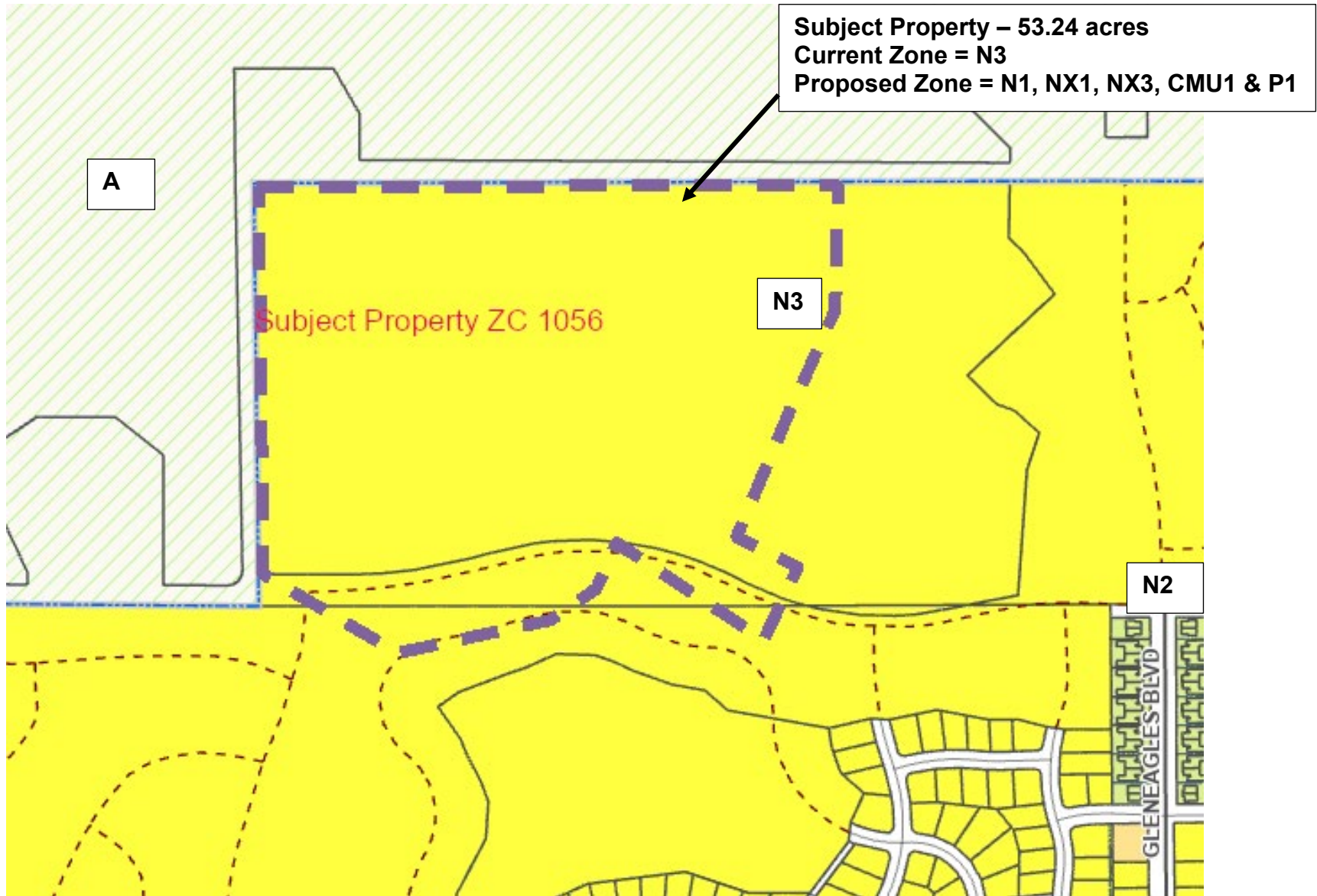


City Zone Change 1056 – High Sierra Sub 14th and C/S 3776 – 53.26 acres N3 to N1, NX1, NX3, CMU1 and Public 1
Zoning Map and Site Photos



Proposed new zoning of subject parcel

EXHIBIT A

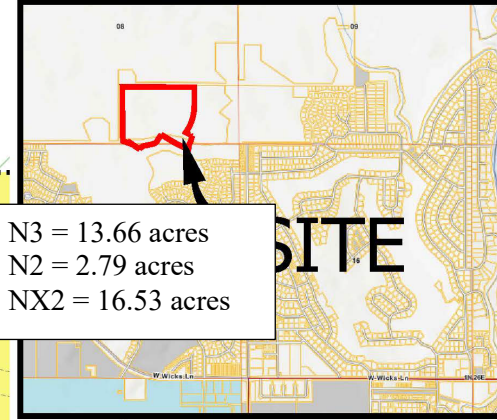
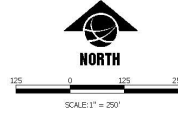
ZONE CHANGE
WITHIN A PORTION OF

HIGH SIERRA SUB 14TH FILING BLOCK 33, LOT 1A1 & COS 3776 TRACT 1B

PREPARED FOR : HIGH SIERRA II INC.

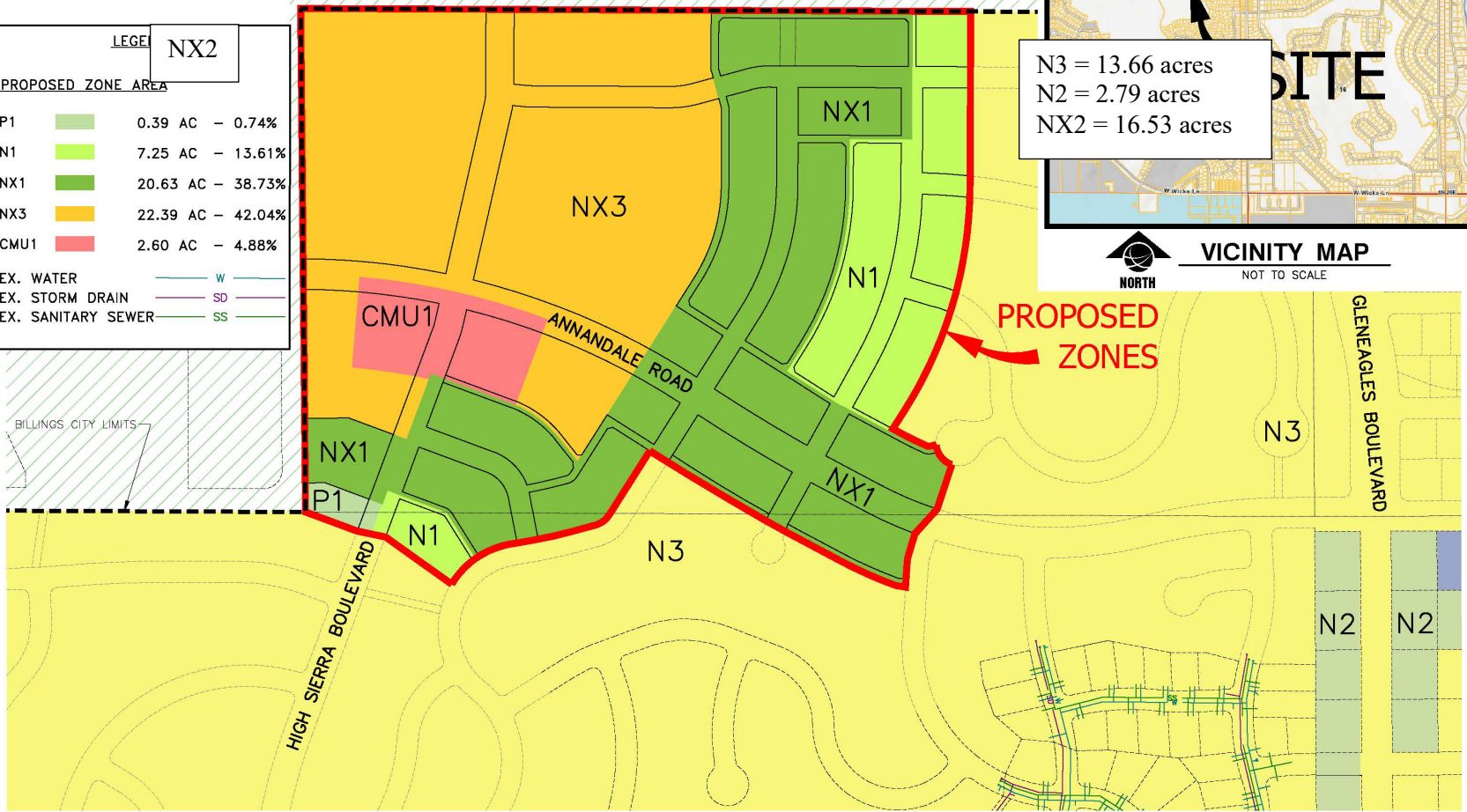
PREPARED BY : **SANDERSON STEWART**

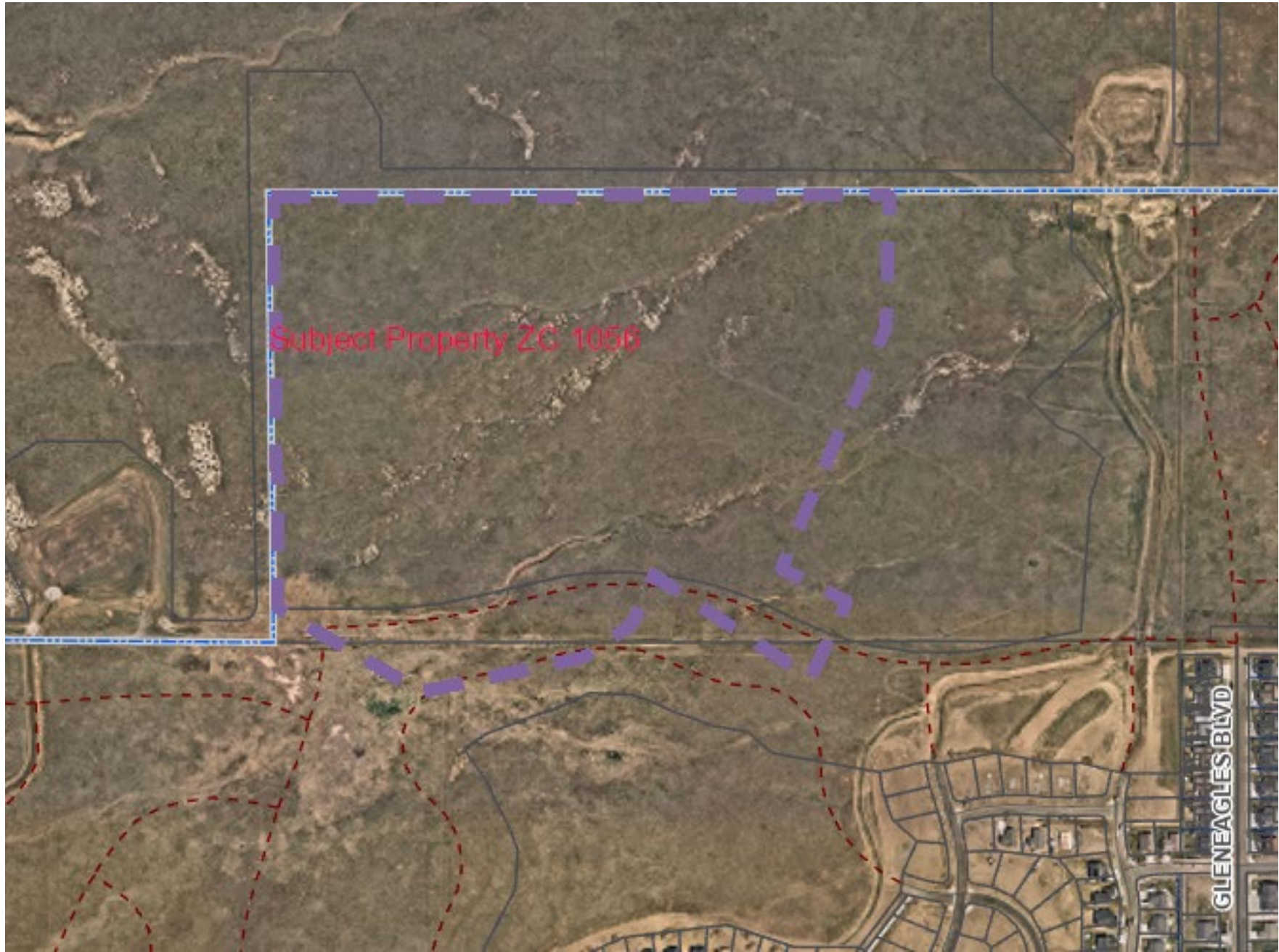
AUGUST, 2024
BILLINGS, MONTANA



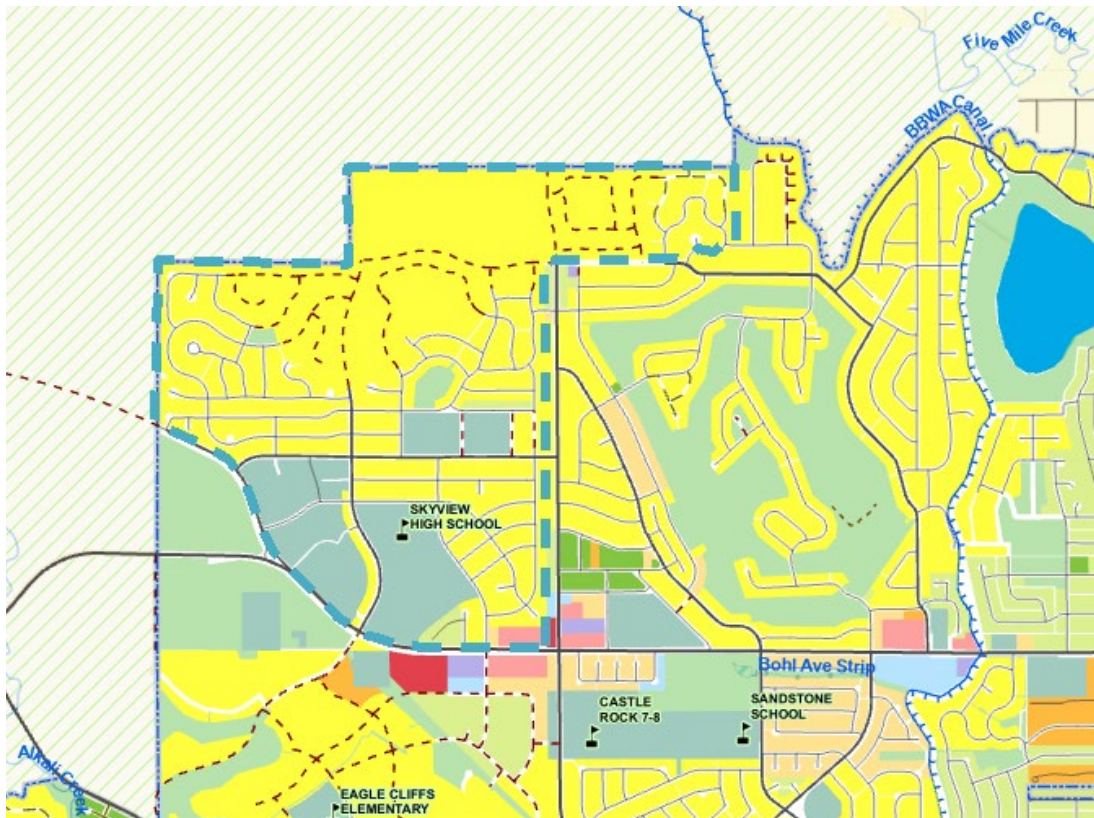
VICINITY MAP
NOT TO SCALE

LEGEND		NX2	
PROPOSED ZONE AREA			
P1		0.39 AC	- 0.74%
N1		7.25 AC	- 13.61%
NX1		20.63 AC	- 38.73%
NX3		22.39 AC	- 42.04%
CMU1		2.60 AC	- 4.88%
EX. WATER		W	
EX. STORM DRAIN		SD	
EX. SANITARY SEWER		SS	

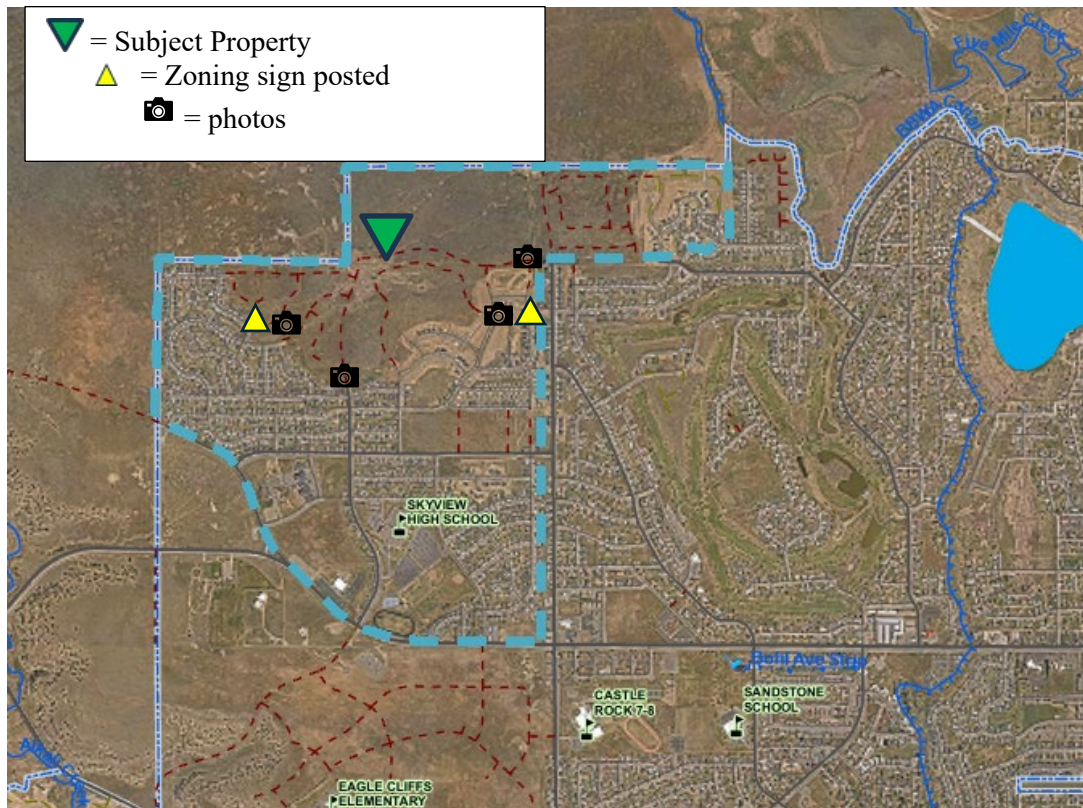




Current aerial of subject property

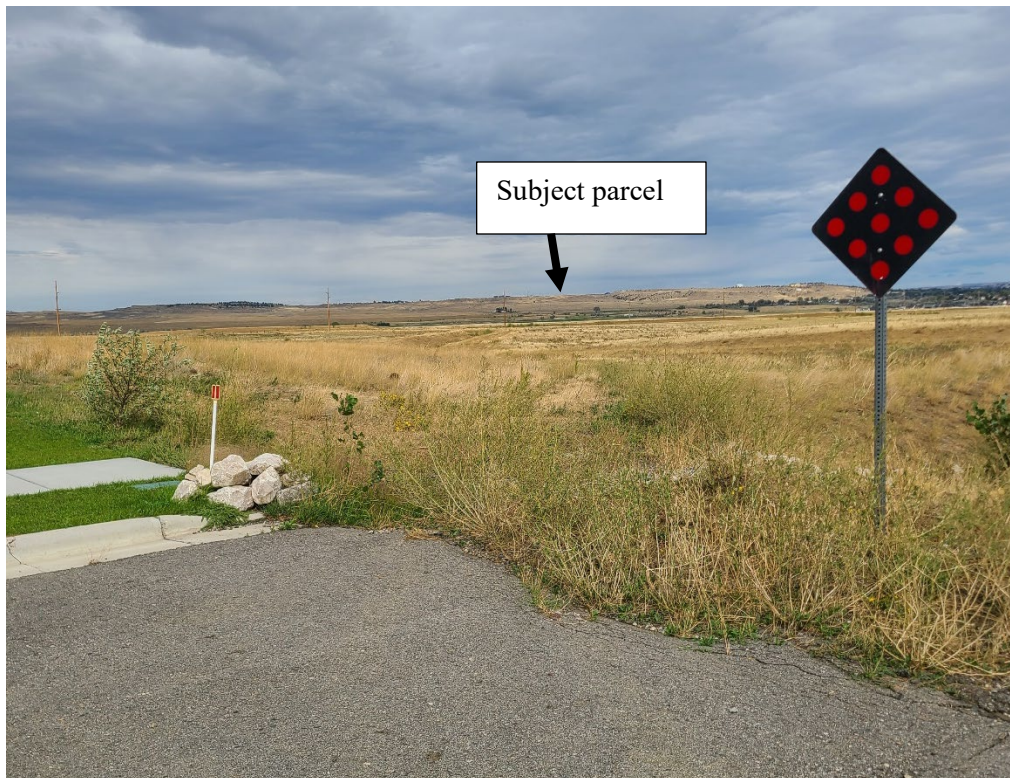


High Sierra Neighborhood Zoning and Aerial





Subject Property – view east/northeast from current dead-end of Las Palmas



View northeast from current dead-end of Las Palmas



Posting on southwest corner of Gleneagles Blvd and Cherry Hills Rd



View northeast on Cherry Hills Rd to Gleneagles Blvd



View east on Cherry Hills Rd to Gleneagles Blvd



View northwest from intersection of Hermosa St and Matador Ave



View west from current dead-end of Las Palmas



View south across public park between Las Palmas and Topanga Ave



View north from current dead-end of High Sierra Blvd



View west from current dead-end of Gleneagles Blvd and Annandale Rd