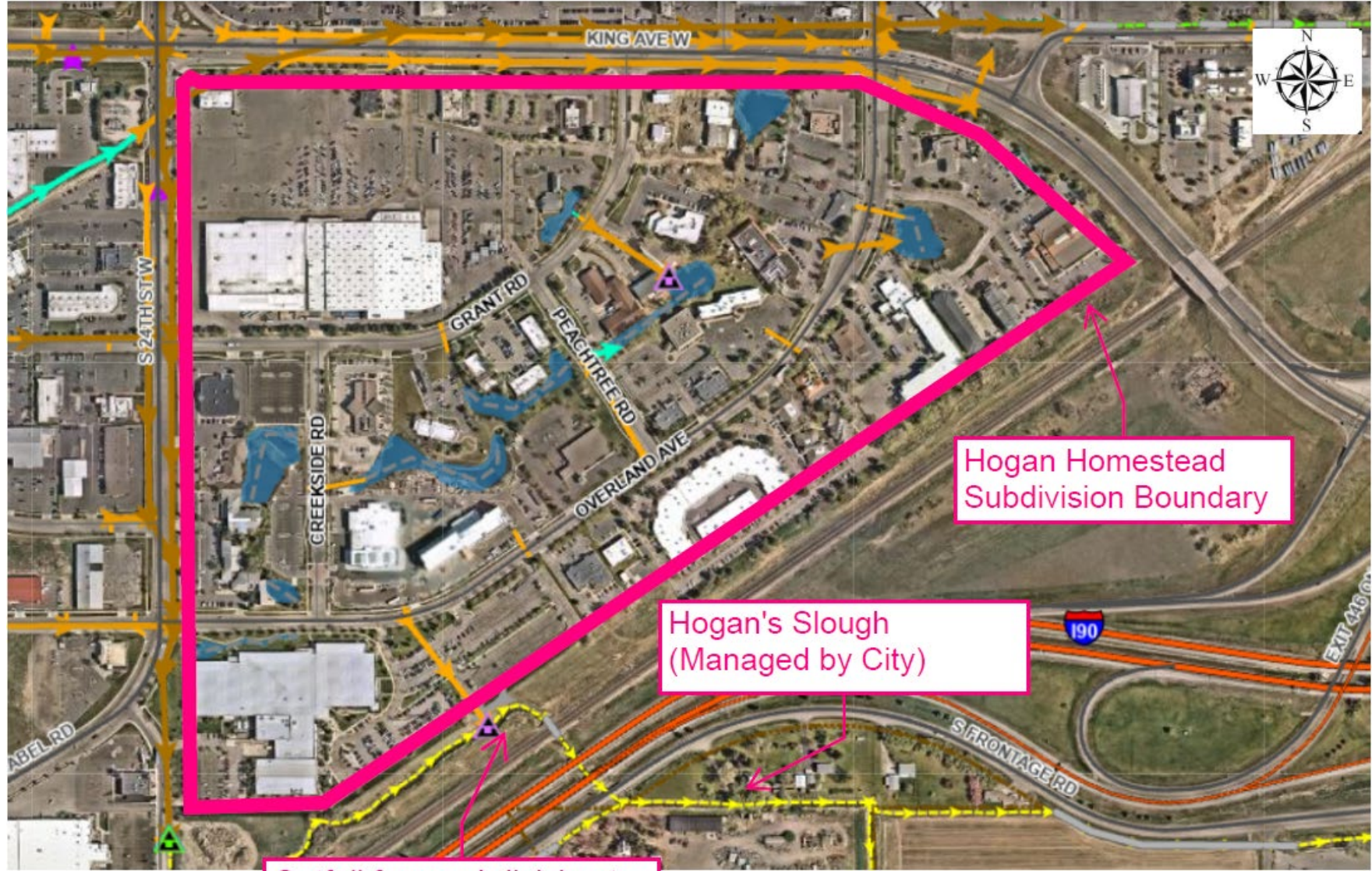




Hogan Homestead Subdivision

Resolution to Rescind Resolution
90-16317, exempting property
within Hogan Homestead
Subdivision from Storm Sewer
Assessments

Hogan Homestead Subdivision: Discharge to Hogan's Slough



Hogan Homestead Subdivision Boundary

Hogan's Slough (Managed by City)

Outfall from subdivision to Hogan's Slough

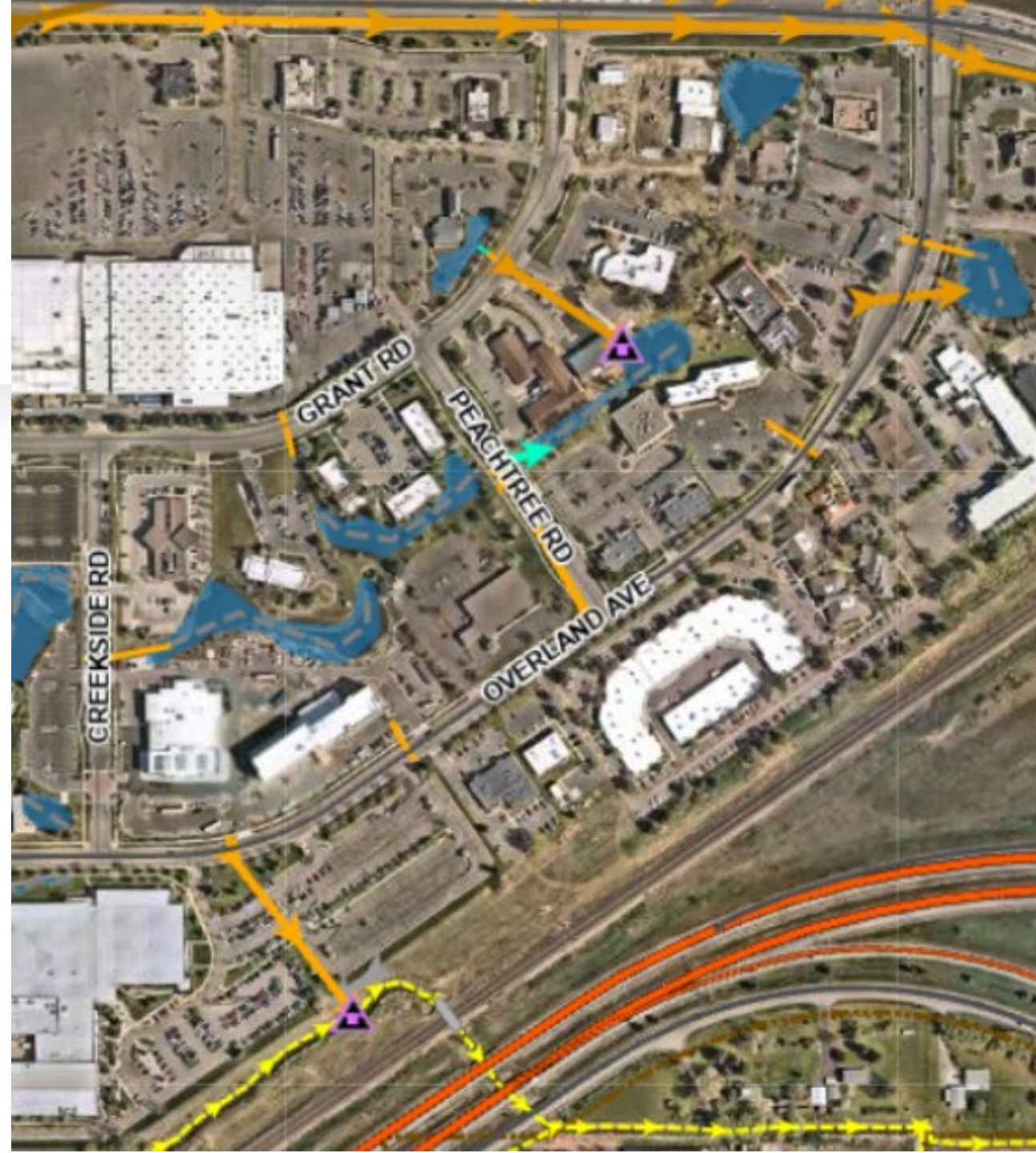
Basic Premise of 1990 Resolution

- Hogan Homestead Subdivision does not discharge storm water into the City's storm sewer system
- The Subdivision has an internal storm drainage system which is operated and maintained by and at the expense of property owners in the Subdivision.
- City incurs no annual cost of maintenance, capital replacement, or any other activities related to the storm drainage in the Subdivision.



Current Situation

- ~~Hogan Homestead Subdivision does not discharge storm water into the City's storm sewer system~~
- The Subdivision has an internal storm drainage system which is operated and maintained by and at the expense of property owners in the Subdivision.
- ~~City incurs no annual cost of maintenance, capital replacement, or any other activities related to the storm drainage in the Subdivision.~~



Meeting With Property Owners

The screenshot displays a fleet management software interface. On the left, there is a control panel with the following sections:

- Area Search:** Includes a date range filter set to "January 01 - March 22".
- Type:** Radio buttons for "Track" and "Event rule", with "Event rule" selected.
- Event rule:** A dropdown menu currently showing "Sweeping Any Broom".
- Table:** A table with columns "Name", "Started", "Ended", and "Actions". It lists multiple events with IDs ranging from 1242 to 1248, with start and end times.
- Export as CSV:** A button to export the data.
- Search:** A search input field.

The main area is a map showing a purple tracking route. A popup window for a "Track point" (ID 1248) displays the following data:

- Run Time Engine St: 273.00
- SanderState: 0.00
- Satellite count: 9.00
- Speed: 6.64 mph
- Total Idle Time: 977.00

At the bottom of the screen, a partial table shows speed and time data for the track point:

5.5 mph	8:50:13 AM	1248
6.0 mph	8:50:16 AM	1248
5.2 mph	8:50:21 AM	1248
6.1 mph	8:50:36 AM	1248
6.6 mph	8:50:38 AM	1248

Recommendation to Repeal Resolution



All subdivisions are required to retain stormwater on site



City has maintenance responsibility for Hogan's Slough



City has maintenance responsibility within subdivision (sweeping, inlets, etc.)



All properties are charged the stormwater fee because storm is part of the street system



This is the only subdivision that is currently exempt from stormwater fees



Other properties currently subsidizing this subdivision. If subdivision is charged, fees for others decrease.