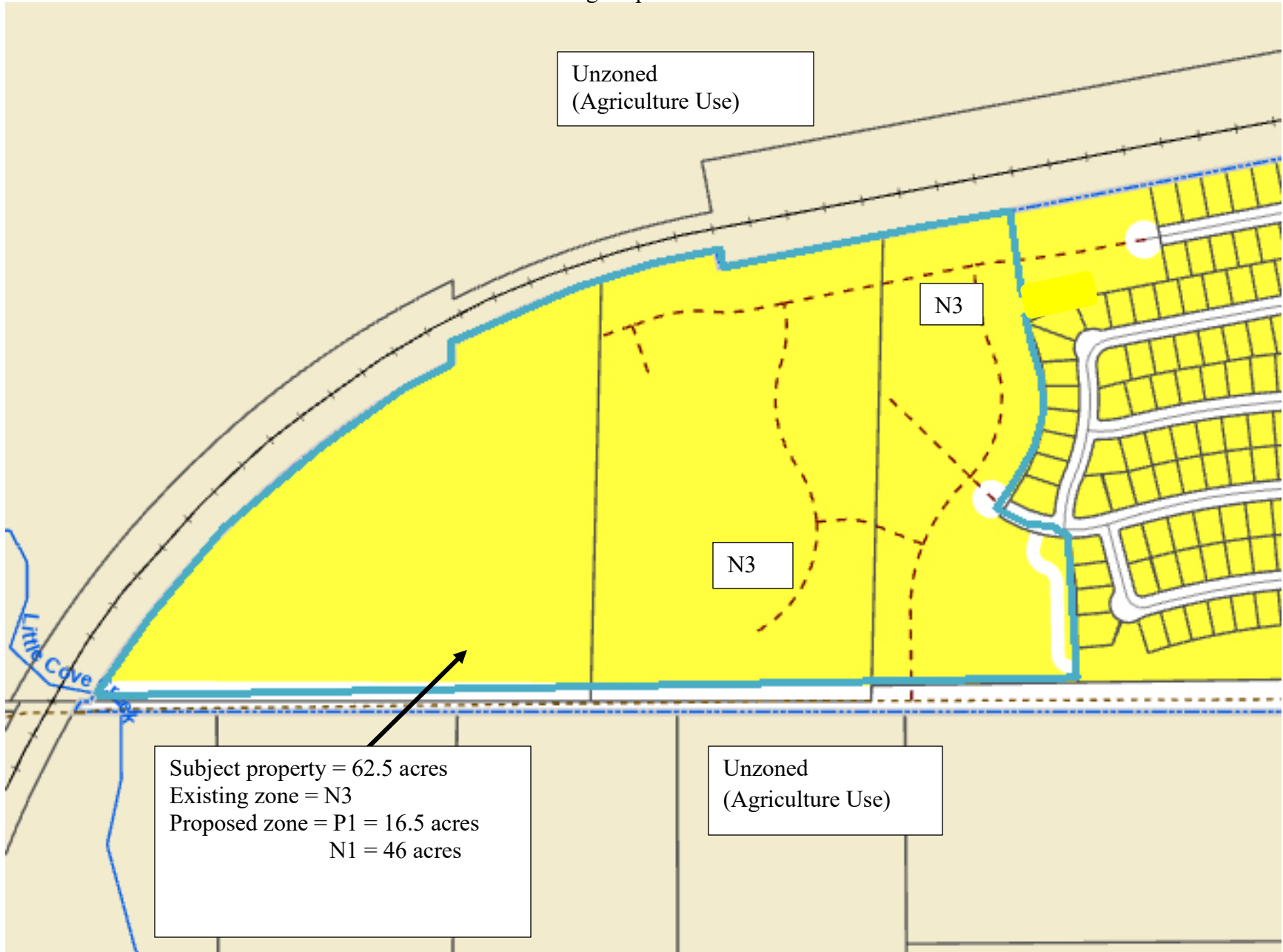


City Zone Change 1047 – Copper Ridge 7th & 8th filings – N3 to P1, N1, NX1 and NX2
Zoning Map and Site Photos



Subject Property

EXHIBIT A

ZONE CHANGE EXHIBIT

WITHIN

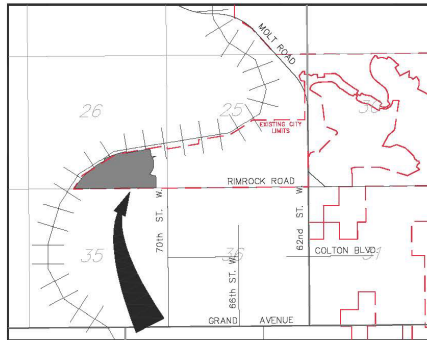
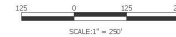
LOTS 15 AND 16, BLOCK 3 OF COPPER RIDGE 7TH FILING AND A PORTION OF
LOT 15A, BLOCK 3, COPPER RIDGE SUB, 8TH FILING

PREPARED FOR : WH COPPER RIDGE 54, LLC

PREPARED BY : SANDERSON STEWART 

APRIL, 2024

BILLINGS, MONTANA



VICINITY MAP

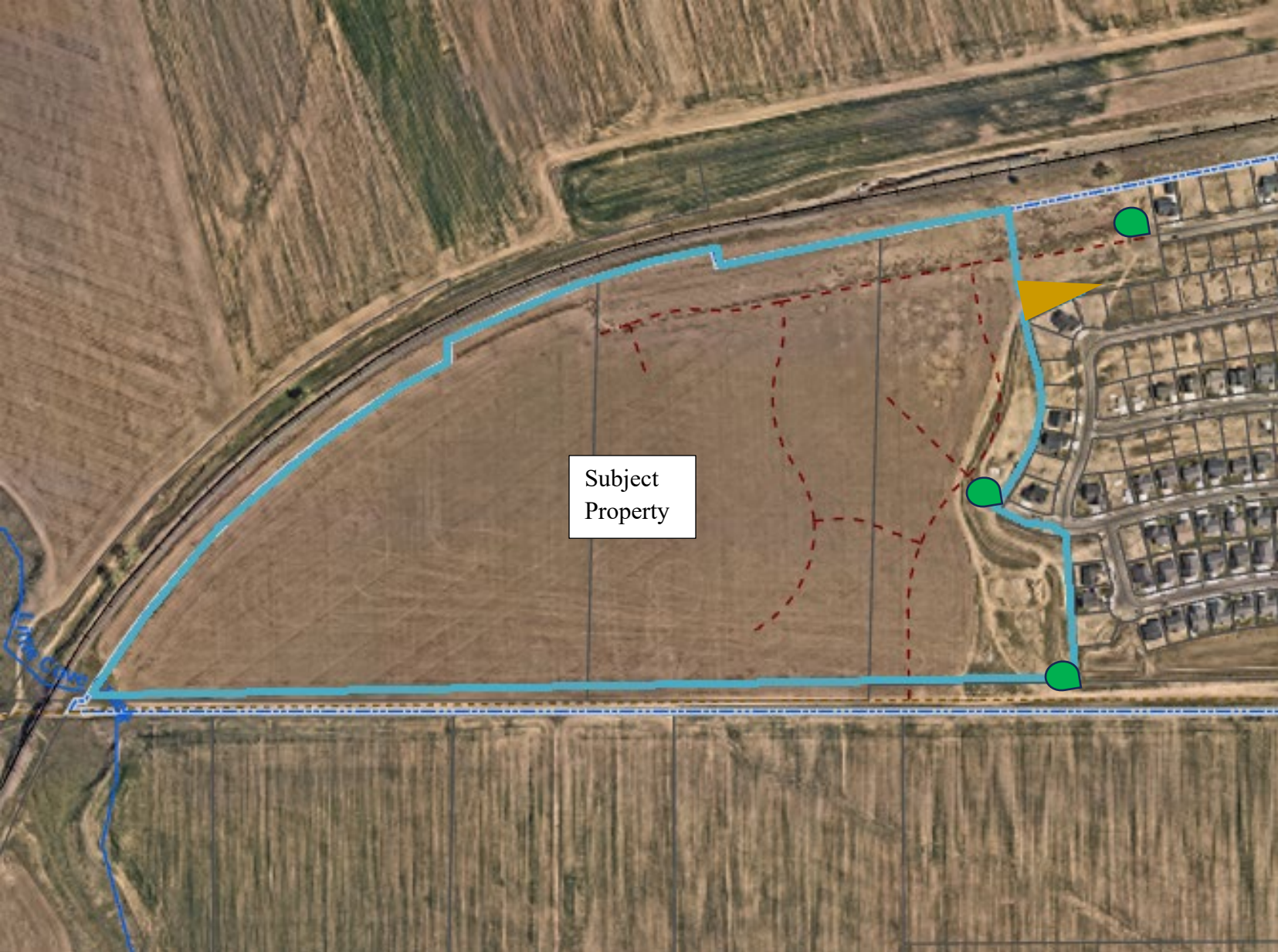
NOT TO SCALE

LEGEND

- P1  16.59 AC - 26.5%
- N1  46.01 AC - 73.5%

- EX. WATER 
- EX. SANITARY 
- EX. STORM 





Subject
Property



Location of Zoning Request Signs



Subject Property – view north and west from 70th St West



View north and east at homes on Copper View Way



View south from Rimrock Rd and 70th St W



View south on 70th St W



View north and west from the temporary dead-end of Shiny Penny Way



View north from Shiny Penny Way



View east on Shiny Penny Way



View west from temporary dead-end of Bronze Blvd



View north and west from Bronze Blvd



View east on Bronze Blvd