

ANNAFIELD SUBDIVISION, FIFTH FILING

BEING LOT 6A-1 OF AMENDED PLAT OF LOT 4, BLOCK 27, LOT 5A, BLOCK 24, AND LOT 6A, BLOCK 20, ANNAFIELD SUBDIVISION, FOURTH FILING, SITUATED IN THE NW1/4 OF SECTION 19, T. 1 S., R. 26 E., P.M.M., IN THE CITY OF BILLINGS, YELLOWSTONE COUNTY, MONTANA

PREPARED FOR : MCCALL DEVELOPMENT, INC.
 PREPARED BY : SANDERSON STEWART

FEBRUARY, 2024
 BILLINGS, MONTANA

- BAISIS OF BEARINGS: PLAT OF ANNAFIELD SUBDIVISION, FOURTH FILING
- FOUND SURVEY MONUMENT, BEARING WITH YELLOW CAP MARKED
 - SANDERSON STEWART, OR AS NOTED
 - FOUND MONUMENT BOX
 - SET 5/8" X 1/2" BEARS WITH CAP MARKED WITH THE LONGER NUMBER OF THE UNDERGROUND LAND SURVEYOR AND SANDERSON STEWART
 - SET INTERSECTION MONUMENTS 5/8" X 1/2" BEARS WITH CAP MARKED WITH THE LONGER NUMBER OF THE UNDERGROUND LAND SURVEYOR AND SANDERSON STEWART
 - SET INTERSECTION MONUMENTS 5/8" X 1/2" BEARS WITH CAP MARKED WITH SANDERSON STEWART BILLINGS M.T. WILL BE REPLACED WITH BRASS CAP MONUMENT BOX UPON COMPLETION OF STREET IMPROVEMENTS.
- NOTE: ALL CURVES ARE TANGENT AND ALL PROPERTY LINES INTERSECTING CURVES ARE RADIAL, UNLESS OTHERWISE NOTED.

AREA DATA

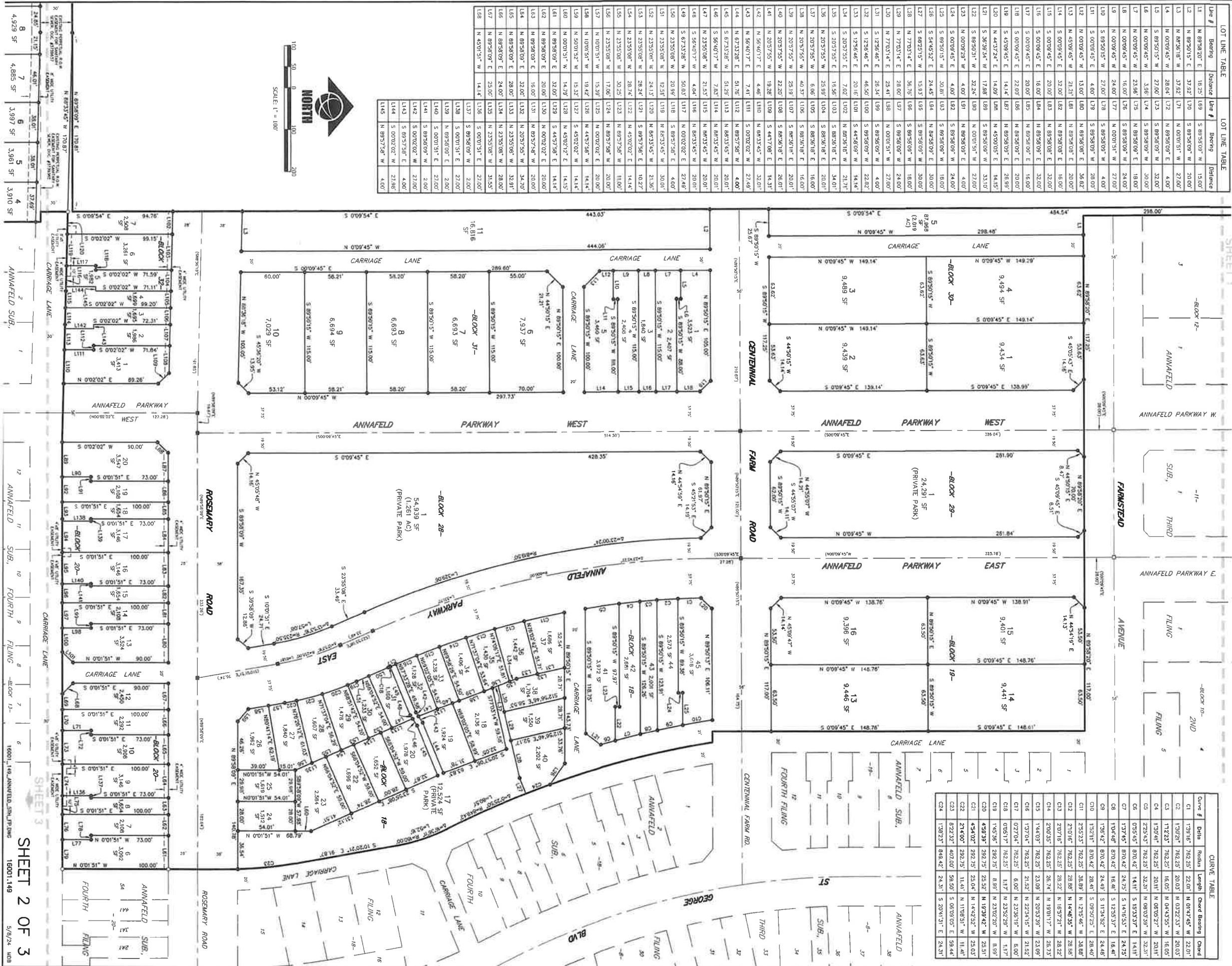
LOTS (119)	12,488 AC
PRIVATE PARKLAND (+)	2,270 AC
NET AREA	15,193 AC
ROAD DEDICATION	6,214 AC
GROSS AREA	21,407 AC

CURVE TABLE

Curve #	Bearing	Radius	Length	Chord Bearing	Chord
C1	N 139°16' E	782.25'	22.01'	N 01°47'45" W	22.01'
C2	S 130°26' E	782.25'	20.03'	N 03°32'33" W	20.03'
C3	S 172°23' E	782.25'	16.05'	N 04°43'35" W	16.05'
C4	S 225°44' E	782.25'	20.01'	N 08°05'27" W	20.01'
C5	S 225°44' E	782.25'	32.31'	N 06°03'38" W	32.31'
C6	S 035°45' E	970.42'	14.11'	S 15°33'37" E	14.11'
C7	S 137°45' E	970.42'	24.25'	S 14°16'53" E	24.25'
C8	S 104°48' E	870.42'	16.41'	S 12°55'17" E	16.41'
C9	S 106°42' E	870.42'	24.49'	S 11°04'52" E	24.49'
C10	S 132°31' E	870.42'	28.41'	S 09°02'25" E	28.41'
C11	S 255°23' E	782.25'	38.89'	N 12°15'46" W	38.89'
C12	S 210°16' E	782.25'	28.86'	N 14°48'55" W	28.86'
C13	S 207°18' E	782.25'	28.22'	N 15°37'21" W	28.22'
C14	S 200°25' E	782.25'	26.74'	N 19°01'17" W	26.74'
C15	S 144°03' E	782.25'	23.09'	N 20°33'39" W	23.09'
C16	S 137°04' E	782.25'	21.52'	N 22°34'15" W	21.52'
C17	S 127°18' E	782.25'	6.00'	N 23°58'18" W	6.00'
C18	S 035°17' E	782.25'	11.7'	N 23°32'28" W	11.7'
C19	S 145°38' E	292.75'	8.85'	N 23°02'20" W	8.85'
C20	S 45°39' E	292.75'	25.52'	N 19°39'42" W	25.51'
C21	S 45°02' E	292.75'	25.04'	N 14°42'32" W	25.03'
C22	S 24°00' E	292.75'	11.61'	N 11°08'51" W	11.44'
C23	S 22°32' E	407.00'	58.50'	S 06°08'05" E	58.44'
C24	S 120°23' E	848.42'	24.31'	S 20°11'31" E	24.31'

LOT LINE TABLE

Line #	Bearing	Distance	Line #	Bearing	Distance
L1	N 89°34'20" E	18.25'	L69	S 89°34'09" W	13.00'
L2	N 89°34'15" E	37.82'	L70	S 89°34'09" W	20.00'
L3	N 89°34'18" W	37.62'	L71	N 00°01'51" W	27.00'
L4	N 00°09'45" W	28.84'	L72	N 89°34'09" E	4.00'
L5	S 89°34'15" W	27.00'	L73	S 89°34'09" W	32.00'
L6	N 00°09'45" W	3.86'	L74	S 89°34'09" W	30.00'
L7	N 00°09'45" W	23.86'	L75	N 89°34'09" E	18.00'
L8	N 00°09'45" W	16.00'	L76	S 89°34'09" W	24.00'
L9	N 00°09'45" W	24.80'	L77	N 00°01'51" W	27.00'
L10	S 89°34'15" W	27.00'	L78	S 89°34'09" W	4.00'
L11	N 00°09'45" W	4.80'	L79	S 89°34'09" W	28.00'
L12	N 00°09'45" W	13.00'	L80	N 89°34'09" E	26.82'
L13	N 45°09'45" W	21.21'	L81	N 89°34'09" E	20.00'
L14	S 00°09'45" E	32.00'	L82	N 89°34'09" E	16.00'
L15	S 00°09'45" E	20.00'	L83	N 89°34'09" E	32.00'
L16	S 00°09'45" E	16.00'	L84	N 89°34'09" E	32.00'
L17	S 00°09'45" E	20.00'	L85	N 89°34'09" E	16.00'
L18	S 00°09'45" E	22.00'	L86	N 89°34'09" E	20.00'
L19	S 45°09'45" E	14.14'	L87	N 89°34'09" E	24.85'
L20	N 44°31'24" E	14.89'	L88	N 45°09'05" E	14.85'
L21	S 36°34'34" W	17.88'	L89	S 89°34'09" W	33.10'
L22	S 89°34'31" W	32.24'	L90	N 00°01'51" W	27.00'
L23	N 00°09'45" W	4.80'	L91	N 89°34'09" E	4.00'
L24	S 00°09'45" E	4.80'	L92	S 89°34'09" W	24.80'
L25	S 89°34'31" W	30.81'	L93	S 89°34'09" W	18.00'
L26	S 44°45'52" E	24.45'	L94	N 89°34'09" E	30.00'
L27	S 89°34'31" W	15.93'	L95	S 89°34'09" W	30.00'
L28	N 77°03'14" E	36.76'	L96	S 89°34'09" W	18.00'
L29	N 77°03'14" E	28.80'	L97	S 89°34'09" W	24.00'
L30	N 77°03'14" E	25.41'	L98	N 00°01'51" W	27.00'
L31	S 12°58'46" E	26.34'	L99	S 89°34'09" W	4.00'
L32	S 12°58'46" E	46.50'	L100	S 89°34'09" W	22.82'
L33	S 12°58'46" E	20.16'	L101	S 44°48'09" W	14.44'
L34	S 20°35'25" E	7.02'	L102	N 89°34'18" W	21.71'
L35	S 20°35'25" E	19.96'	L103	S 89°34'18" E	34.01'
L36	N 20°37'55" W	25.89'	L104	S 89°34'18" E	20.01'
L37	N 20°37'55" W	6.86'	L105	S 89°34'18" E	16.00'
L38	N 20°37'55" W	40.37'	L106	S 89°34'18" E	16.00'
L39	N 20°37'55" W	25.19'	L107	S 89°34'18" E	20.01'
L40	N 20°37'55" W	22.20'	L108	S 89°34'18" E	26.01'
L41	N 20°37'55" W	19.28'	L109	S 44°37'08" E	14.31'
L42	N 56°40'17" E	4.46'	L110	N 89°34'45" W	32.01'
L43	N 56°40'17" E	7.41'	L111	S 00°02'02" W	27.49'
L44	S 67°23'28" W	51.29'	L112	N 89°34'45" W	4.00'
L45	S 67°23'28" W	7.83'	L113	N 89°34'45" W	20.01'
L46	S 56°40'17" W	7.83'	L114	N 89°34'45" W	20.01'
L47	N 23°35'08" W	21.33'	L115	N 89°34'45" W	20.01'
L48	S 56°40'17" W	4.84'	L116	N 89°34'45" W	20.01'
L49	S 67°23'28" W	30.03'	L117	N 00°02'02" E	27.49'
L50	N 23°35'08" W	20.89'	L118	S 89°37'58" E	4.00'
L51	N 23°35'08" W	12.51'	L119	N 89°34'45" W	30.01'
L52	N 23°35'08" W	24.13'	L120	N 89°34'45" W	21.35'
L53	N 23°35'08" W	28.24'	L121	N 89°37'58" E	10.27'
L54	N 23°35'08" W	28.74'	L122	N 45°02'02" E	14.44'
L55	N 23°35'08" W	30.25'	L123	N 89°37'58" W	11.00'
L56	N 23°35'08" W	17.86'	L124	N 89°37'58" W	20.00'
L57	N 00°01'51" W	15.39'	L125	N 00°02'02" E	20.00'
L58	N 00°01'51" W	19.42'	L126	N 44°57'48" W	14.44'
L59	N 00°01'51" W	15.32'	L127	S 45°02'02" W	14.44'
L60	N 00°01'51" W	14.97'	L128	N 45°02'12" E	14.15'
L61	N 89°34'09" E	32.00'	L129	S 44°57'48" W	14.44'
L62	N 89°34'09" E	20.00'	L130	N 00°02'02" E	20.00'
L63	N 89°34'09" E	16.00'	L131	N 89°37'58" W	20.00'
L64	N 89°34'09" E	32.00'	L132	N 20°37'55" W	34.70'
L65	N 89°34'09" E	28.00'	L133	N 23°35'08" W	32.81'
L66	N 89°34'09" E	24.00'	L134	N 23°35'08" W	28.00'
L67	N 89°34'09" E	23.00'	L135	N 23°35'08" W	31.55'
L68	N 45°01'51" W	14.14'	L136	S 00°01'51" E	27.00'
L69	S 89°34'09" W	2.00'			
L70	S 00°01'51" E	27.00'			
L71	S 89°34'09" W	2.00'			
L72	S 89°34'09" W	2.00'			
L73	S 89°34'09" W	2.00'			
L74	S 89°34'09" W	2.00'			
L75	S 89°34'09" W	2.00'			
L76	S 89°34'09" W	2.00'			
L77	S 89°34'09" W	2.00'			
L78	S 89°34'09" W	2.00'			
L79	S 89°34'09" W	2.00'			
L80	S 89°34'09" W	2.00'			
L81	S 89°34'09" W	2.00'			
L82	S 89°34'09" W	2.00'			
L83	S 89°34'09" W	2.00'			
L84	S 89°34'09" W	2.00'			
L85	S 89°34'09" W	2.00'			
L86	S 89°34'09" W	2.00'			
L87	S 89°34'09" W	2.00'			
L88	S 89°34'09" W	2.00'			
L89	S 89°34'09" W	2.00'			
L90	S 89°34'09" W	2.00'			
L91	S 89°34'09" W	2.00'			
L92	S 89°34'09" W	2.00'			
L93	S 89°34'09" W	2.00'			
L94	S 89°34'09" W	2.00'			
L95	S 89°34'09" W	2.00'			
L96	S 89°34'09" W	2.00'			
L97	S 89°34'09" W	2.00'			
L98	S 89°34'09" W	2.00'			
L99	S 89°34'09" W	2.00'			
L100	S 89°34'09" W	2.00'			
L101	S 89°34'09" W	2.00'			
L102	S 89°34'09" W	2.00'			
L103	S 89°34'09" W	2.00'			
L104	S 89°34'09" W	2.00'			
L105	S 89°34'09" W	2.00'			
L106	S 89°34'09" W	2.00'			
L107	S 89°34'09" W	2.00'			
L108	S 89°34'09" W	2.00'			
L109	S 89°34'09" W	2.00'			
L110	S 89°34'09" W	2.00'			
L111	S 89°34'09" W	2.00'			
L112	S 89°34'09" W	2.00'			
L113	S 89°34'09" W	2.00'			
L114	S 89°34'09" W	2.00'			
L115	S 89°34'09" W	2.00'			
L116	S 89°34'09" W	2.00'			
L117	S 89°34'09" W	2.00'			
L118	S 89°34'09" W	2.00'			
L119	S 89°34'09" W	2.00'			
L120	S 89°34'09" W	2.00'			
L121	S 89°34'09" W	2.00'			
L122	S 89°34'09" W	2.00'			
L123	S 89°34'09" W	2.00'			
L124	S 89°34'09" W	2.00'			
L125	S 89°34'09" W	2.00'			
L126	S 89°34'09" W	2.00'			
L127	S 89°34'09" W	2.00'			
L128	S 89°34'09" W	2.00'			
L129	S 89°34'09" W	2.00'			
L130	S 89°34'09" W	2.00'			
L131	S 89°34'09" W	2.00'			
L132	S 89°34'09" W	2.00'			
L133	S 89°34'09" W	2.00'			
L134	S 89°34'09" W	2.00'			
L135	S 89°34'09" W	2.00'			
L136	S 89°34'09" W	2.00'			
L137	S 89°34'09" W	2.00'			
L138	S 89°34'09" W	2.00'			
L139	S 89°34'09" W	2.00'			
L140	S 89°34'09" W	2.00'			
L141	S 89°34'09" W	2.00'			
L142	S 89°34'09" W	2.00'			
L143	S 89°34'09" W	2.00'			
L144	S 89°34'09" W	2.00'			
L145	S 89°34'09" W	2.00'			



Line #	Bearing	Distance	Line #	Bearing	Distance
L1	N 89°30'00" E	18.25'	L69	S 89°30'09" W	15.00'
L2	N 89°30'15" E	32.82'	L70	S 89°30'09" W	20.00'
L3	N 89°30'18" W	37.82'	L71	N 00°01'51" W	27.00'
L4	N 00°09'45" W	28.04'	L72	N 89°30'09" E	4.00'
L5	N 89°30'15" W	22.00'	L73	S 89°30'09" W	32.00'
L6	N 00°09'45" W	3.88'	L74	S 89°30'09" W	30.00'
L7	N 00°09'45" W	23.96'	L75	S 89°30'09" E	18.00'
L8	N 00°09'45" W	16.00'	L76	S 89°30'09" W	24.00'
L9	N 00°09'45" W	24.00'	L77	N 00°01'51" W	27.00'
L10	S 89°30'15" W	27.00'	L78	S 89°30'09" W	4.00'
L11	S 89°30'45" E	4.00'	L79	S 89°30'09" W	28.00'
L12	N 00°09'45" W	12.00'	L80	N 89°30'09" E	36.82'
L13	N 89°30'45" W	23.21'	L81	N 89°30'09" E	20.00'
L14	S 00°09'45" E	32.00'	L82	N 89°30'09" E	16.00'
L15	S 00°09'45" E	20.00'	L83	N 89°30'09" E	32.00'
L16	S 00°09'45" E	16.00'	L84	N 89°30'09" E	32.00'
L17	S 00°09'45" E	20.00'	L85	N 89°30'09" E	16.00'
L18	S 00°09'45" E	22.00'	L86	N 89°30'09" E	20.00'
L19	S 89°30'45" E	14.14'	L87	N 89°30'09" E	26.89'
L20	N 43°24'4" E	14.08'	L88	N 45°00'05" E	14.15'
L21	S 89°30'34" W	17.88'	L89	S 89°30'09" W	33.10'
L22	S 89°30'31" W	32.24'	L90	N 00°01'51" W	27.00'
L23	N 00°09'29" W	4.00'	L91	N 89°30'09" E	4.00'
L24	S 00°09'45" E	4.00'	L92	S 89°30'09" W	24.00'
L25	S 89°30'15" W	20.81'	L93	S 89°30'09" W	18.00'
L26	S 84°45'52" E	24.45'	L94	N 89°30'09" W	18.00'
L27	S 89°30'15" W	15.83'	L95	S 89°30'09" W	30.00'
L28	N 77°03'14" E	36.76'	L96	S 89°30'09" W	18.00'
L29	N 77°03'14" E	28.00'	L97	S 89°30'09" W	24.00'
L30	N 77°03'14" E	25.41'	L98	N 00°01'51" W	27.00'
L31	S 12°58'46" E	26.34'	L99	S 89°30'09" W	4.00'
L32	S 12°58'46" E	46.50'	L100	S 89°30'09" W	22.82'
L33	S 12°58'46" E	20.16'	L101	S 44°59'09" W	14.14'
L34	S 20°57'55" E	7.02'	L102	N 89°30'18" W	21.27'
L35	S 20°57'55" E	18.86'	L103	S 89°30'18" E	34.01'
L36	N 20°57'55" W	23.99'	L104	S 84°56'19" E	20.01'
L37	N 20°57'55" W	6.06'	L105	S 84°56'19" E	16.00'
L38	N 20°57'55" W	40.37'	L106	S 89°30'18" E	16.00'
L39	N 20°57'55" W	23.19'	L107	S 84°56'19" E	20.01'
L40	N 20°57'55" W	22.20'	L108	S 84°56'19" E	28.01'
L41	N 20°57'55" W	19.28'	L109	S 44°57'04" E	14.31'
L42	N 59°00'17" E	4.46'	L110	N 89°30'45" W	32.01'
L43	N 59°00'17" E	7.41'	L111	S 00°02'02" W	27.48'
L44	N 67°33'28" E	51.26'	L112	N 89°30'58" W	4.00'
L45	S 67°33'28" W	51.26'	L113	N 89°30'45" W	20.01'
L46	S 56°00'17" W	7.83'	L114	N 89°30'45" W	20.01'
L47	N 23°55'08" W	21.33'	L115	N 89°30'45" W	20.01'
L48	S 56°00'17" W	4.04'	L116	N 84°33'45" W	20.01'
L49	S 67°33'28" W	50.03'	L117	N 00°02'02" E	27.49'
L50	N 23°55'08" W	20.89'	L118	S 89°30'09" W	4.00'
L51	N 23°55'08" W	12.51'	L119	N 89°30'45" W	21.36'
L52	N 23°55'08" W	24.13'	L120	N 89°30'45" W	20.37'
L53	N 23°55'08" W	28.24'	L121	S 89°30'58" E	10.27'
L54	N 23°55'08" W	28.274'	L122	N 45°02'02" E	14.14'
L55	N 23°55'08" W	30.251'	L123	N 89°30'58" W	11.00'
L56	N 23°55'08" W	17.06'	L124	N 89°30'58" W	20.00'
L57	N 10°01'51" W	15.38'	L125	N 00°02'02" E	20.00'
L58	N 10°01'51" W	19.42'	L126	N 44°57'58" W	14.14'
L59	N 50°01'52" W	15.32'	L127	S 45°02'02" W	14.14'
L60	N 00°01'51" W	14.29'	L128	N 45°02'12" E	14.15'
L61	N 89°30'09" E	32.00'	L129	S 44°57'58" E	14.14'
L62	N 89°30'09" E	20.00'	L130	N 00°02'02" E	20.00'
L63	N 89°30'09" E	16.00'	L131	N 89°30'58" W	20.00'
L64	N 89°30'09" E	32.00'	L132	N 20°57'55" W	34.70'
L65	N 89°30'09" E	28.00'	L133	N 23°55'08" W	32.91'
L66	N 89°30'09" E	24.00'	L134	N 23°55'08" W	28.00'
L67	N 89°30'09" E	25.00'	L135	N 23°55'08" W	31.55'
L68	N 45°01'51" W	14.14'	L136	S 00°01'51" E	27.00'
			L137	S 89°30'09" W	2.00'
			L138	S 00°01'51" E	27.00'
			L139	N 89°30'09" E	2.00'
			L140	S 00°01'51" E	27.00'
			L141	S 89°30'09" W	2.00'
			L142	S 00°02'02" W	2.00'
			L143	S 89°30'58" E	4.00'
			L144	S 00°02'02" W	27.98'
			L145	N 89°30'58" W	4.00'

Curve #	Date	Radius	Length	Chord Bearing	Chord
C1	1/30/21	762.25'	22.00'	N 01°34'45" W	22.01'
C2	1/30/21	762.25'	20.03'	N 03°23'33" W	20.03'
C3	1/12/23	762.25'	16.05'	N 04°43'55" W	16.05'
C4	1/30/21	762.25'	20.11'	N 06°05'27" W	20.11'
C5	2/25/24	762.25'	32.31'	N 08°03'58" W	32.31'
C6	07/25/45	870.42'	14.11'	S 15°53'57" E	14.11'
C7	1/37/45	870.42'	24.75'	S 14°16'53" E	24.75'
C8	1/04/48	870.42'	16.41'	S 12°53'57" E	16.41'
C9	1/36/42	870.42'	24.49'	S 11°34'52" E	24.49'
C10	1/52/31	870.42'	28.41'	S 09°50'55" E	28.40'
C11	2/25/23	762.25'	38.89'	N 12°15'46" W	38.88'
C12	2/01/61	762.25'	28.88'	N 14°48'35" W	28.88'
C13	2/07/16	762.25'	26.22'	N 15°57'21" W	26.22'
C14	2/00/35	762.25'	26.74'	N 19°11'17" W	26.73'
C15	1/41/09	762.25'	23.09'	N 20°53'59" W	23.09'
C16	1/31/04	762.25'	21.52'	N 22°34'15" W	21.52'
C17	07/27/04	762.25'	6.00'	N 23°55'19" W	6.00'
C18	01/25/17	762.25'	11.17'	N 23°52'29" W	11.17'
C19	1/45/38	762.25'	8.99'	N 23°02'29" W	8.99'
C20	4/29/38	762.25'	22.92'	N 19°59'42" W	22.91'
C21	4/29/42	762.25'	25.04'	N 14°42'52" W	25.03'
C22	2/17/00	282.25'	11.44'	N 11°09'31" W	11.41'
C23	8/22/32	402.00'	59.50'	S 06°59'05" E	59.44'
C24	1/23/23	894.42'	24.31'	S 20°41'31" E	24.31'

Line #	Bearing	Distance	Line #	Bearing	Distance
L1	N 89°30'00" E	18.25'	L69	S 89°30'09" W	15.00'
L2	N 89°30'15" E	32.82'	L70	S 89°30'09" W	20.00'
L3	N 89°30'18" W	37.82'	L71	N 00°01'51" W	27.00'
L4	N 00°09'45" W	28.04'	L72	N 89°30'09" E	4.00'
L5	N 89°30'15" W	22.00'	L73	S 89°30'09" W	32.00'
L6	N 00°09'45" W	3.88'	L74	S 89°30'09" W	30.00'
L7	N 00°09'45" W	23.96'	L75	S 89°30'09" E	18.00'
L8	N 00°09'45" W	16.00'	L76	S 89°30'09" W	24.00'
L9	N 00°09'45" W	24.00'	L77	N 00°01'51" W	27.00'
L10	S 89°30'15" W	27.00'	L78	S 89°30'09" W	4.00'
L11	S 89°30'45" E	4.00'	L79	S 89°30'09" W	28.00'
L12	N 00°09'45" W	12.00'	L80	N 89°30'09" E	36.82'
L13	N 89°30'45" W	23.21'	L81	N 89°30'09" E	20.00'
L14	S 00°09'45" E	32.00'	L82	N 89°30'09" E	16.00'
L15	S 00°09'45" E	20.00'	L83	N 89°30'09" E	32.00'
L16	S 00°09'45" E	16.00'	L84	N 89°30'09" E	32.00'
L17	S 00°09'45" E	20.00'	L85	N 89°30'09" E	16.00'
L18	S 00°09'45" E	22.00'	L86	N 89°30'09" E	20.00'
L19	S 89°30'45" E	14.14'	L87	N 89°30'09" E	26.89'
L20	N 43°24'4" E	14.08'	L88	N 45°00'05" E	14.15'
L21	S 89°30'34" W	17.88'	L89	S 89°30'09" W	33.10'
L22	S 89°30'31" W	32.24'	L90	N 00°01'51" W	27.00'
L23	N 00°09'29" W	4.00'	L91	N 89°30'09" E	4.00'
L24	S 00°09'45" E	4.00'	L92	S 89°30'09" W	24.00'
L25	S 89°30'15" W	20.81'	L93	S 89°30'09" W	18.00'
L26	S 84°45'52" E	24.45'	L94	N 89°30'09" W	18.00'
L27	S 89°30'15" W	15.83'	L95	S 89°30'09" W	30.00'
L28	N 77°03'14" E	36.76'	L96	S 89°30'09" W	18.00'
L29	N 77°03'14" E	28.00'	L97	S 89°30'09" W	24.00'
L30	N 77°03'14" E	25.41'	L98	N 00°01'51" W	27.00'
L31	S 12°58'46" E	26.34'	L99	S 89°30'09" W	4.00'
L32	S 12°58'46" E	46.50'	L100	S 89°30'09" W	22.82'
L33	S 12°58'46" E	20.16'	L101	S 44°59'09" W	14.14'
L34	S 20°57'55" E	7.02'	L102	N 89°30'18" W	21.27'
L35	S 20°57'55" E	18.86'	L103	S 89°30'18" E	34.01'
L36	N 20°57'55" W	23.99'	L104	S 84°56'19" E	20.01'
L37	N 20°57'55" W	6.06'	L105	S 84°56'19" E	16.00'
L38	N 20°57'55" W	40.37'	L106	S 89°30'18" E	16.00'
L39	N 20°57'55" W	23.19'	L107	S 84°56'19" E	20.01'
L40	N 20°57'55" W	22.20'	L108	S 84°56'19" E	28.01'
L41	N 20°57'55" W	19.28'	L109	S 44°57'04" E	14.31'
L42	N 59°00'17" E	4.46'	L110	N 89°30'45" W	32.01'
L43	N 59°00'17" E	7.41'	L111	S 00°02'02" W	27.48'
L44	N 67°33'28" E	51.26'	L112	N 89°30'58" W	4.00'
L45	S 67°33'28" W	51.26'	L113	N 89°30'45" W	20.01'
L46	S 56°00'17" W	7.83'	L114	N 89°30'45" W	20.01'
L47	N 23°55'08" W	21.33'	L115	N 89°30'45" W	20.01'
L48	S 56°00'17" W	4.04'	L116	N 84°33'45" W	20.01'
L49	S 67°33'28" W	50.03'	L117	N 00°02'02" E	27.49'
L50	N 23°55'08" W	20.89'	L118	S 89°30'09" W	4.00'
L51	N 23°55'08" W	12.51'	L119	N 89°30'45" W	21.36'
L52	N 23°55'08" W	24.13'	L120	N 89°30'45" W	20.37'
L53	N 23°55'08" W	28.24'	L121	S 89°30'58" E	10.27'
L54	N 23°55'08" W	28.274'	L122	N 45°02'02" E	14.14'
L55	N 23°55'08" W	30.251'	L123	N 89°30'58" W	11.00'
L56	N 23°55'08" W	17.06'	L124	N 89°30'58" W	20.00'
L57	N 10°01'51" W	15.38'	L125	N 00°02'02" E	20.00'
L58	N 10°01'51" W	19.42'	L126	N 44°57'58" W	14.14'
L59	N 50°01'52" W	15.32'	L127	S 45°02'02" W	14.14'
L60	N 00°01'51" W	14.29'	L128	N 45°02'12" E	14.15'
L61	N 89°30'09" E	32.00'	L129	S 44°57'58" E	14.14'
L62	N 89°30'09" E	20.00'	L130	N 00°02'02" E	20.00'
L63	N 89°30'09" E	16.00'	L131	N 89°30'58" W	20.00'
L64	N 89°30'09" E	32.00'	L132	N 20°57'55" W	34.70'
L65	N 89°30'09" E	28.00'	L133	N 23°55'08" W	32.91'
L66	N 89°30'09" E	24.00'	L134	N 23°55'08" W	28.00'
L67	N 89°30'09" E	25.00'	L135	N 23°55'08" W	31.55'
L68	N 45°01'51" W	14.14'	L136	S 00°01'51" E	27.00'
			L137	S 89°30'09" W	2.00'
			L138	S 00°01'51" E	27.00'
			L139	N 89°30'09" E	2.00'
			L140	S 00°01'51" E	27.00'