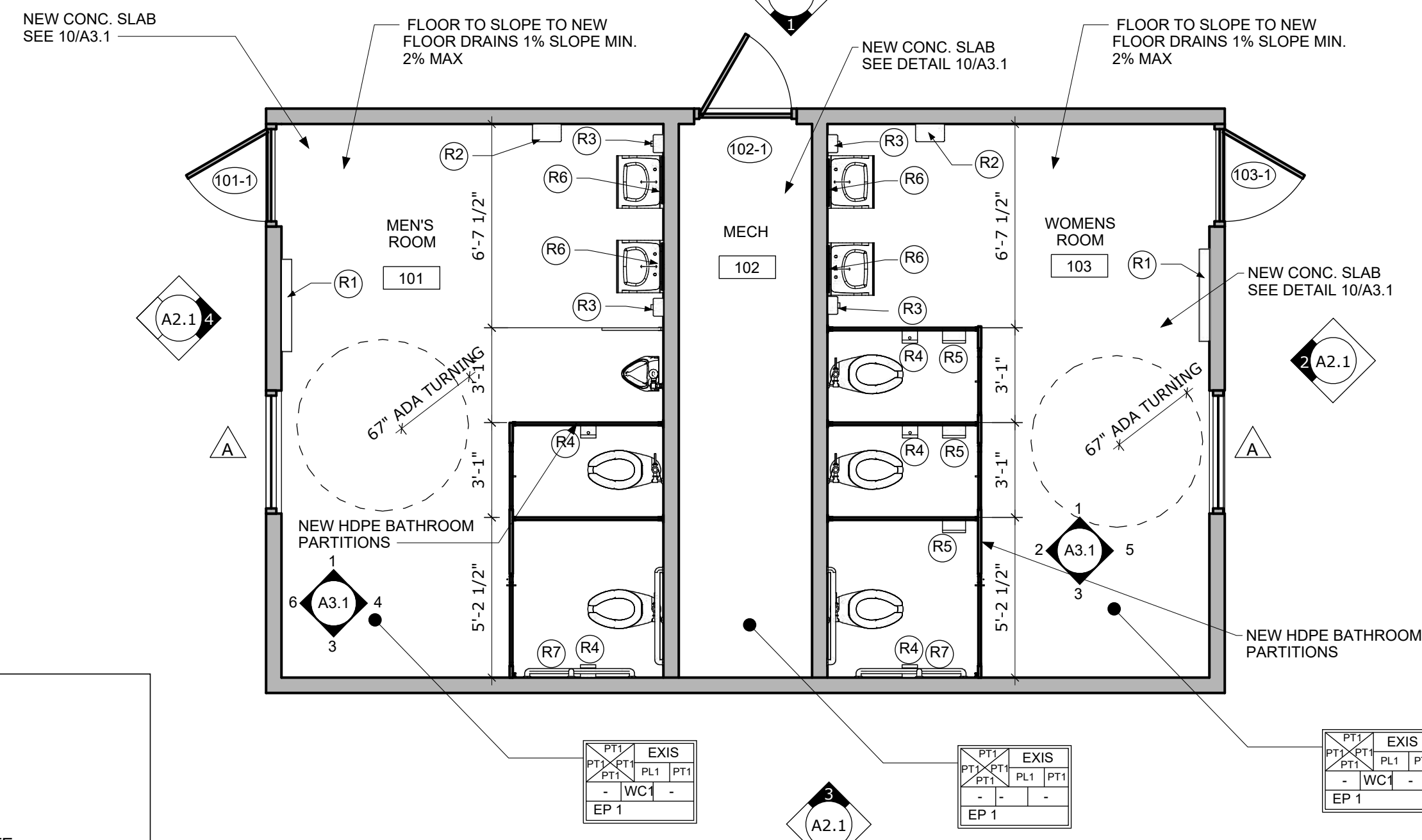


- DEMO PLAN NOTES**
- 1 REMOVE CEILING COMPLETE
 - 2 REMOVE DOOR COMPLETE
 - 3 REMOVE FLOOR COMPLETE
 - 4 REMOVE WINDOW & SECURITY SCREEN COMPLETE
 - 5 REMOVE PLUMBING FIXTURES PATCH HOLES AS REQUIRED
 - 6 REMOVE TOILET PARTITIONS
 - 7 REMOVE T1 11 SIDING AT GABLE ENDS
 - 8 REMOVE CONCRETE PAD COMPLETE

- GENERAL PLAN NOTES**
1. PATCH AND REPAIR AS REQUIRED
 2. CONTRACTOR TO DISPOSE OF WASTE OFF SITE

DOOR SCHEDULE												
DOOR NO.	ROOM NAME	SIZE	TYPE	MATERIAL	FINISH	FRAME MATERIAL	FINISH	LOCK	CLOSER	STOP	HARDWARE FINISH	REMARKS
101-1	MEN'S ROOM	3'0"X6'8"	A	HOLLOW METAL	PAINT - PT3	HOLLOW METAL	PAINT - PT2	PASSAGE AND DEADBOLT	YES	WALL	US26	DOOR TO FIT EXISTING OPENING INSTALL IVES FS446 FLOOR STOP AND DOOR HOLDER
102-1	MECH	3'0"X6'8"	A	HOLLOW METAL	PAINT - PT2	HOLLOW METAL	PAINT - PT2	PASSAGE AND DEADBOLT	YES	WALL	US26	DOOR TO FIT EXISTING OPENING INSTALL IVES FS446 FLOOR STOP AND DOOR HOLDER
103-1	WOMEN'S ROOM	3'0"X6'8"	A	HOLLOW METAL	PAINT - PT3	HOLLOW METAL	PAINT - PT2	PASSAGE AND DEADBOLT	YES	WALL	US26	DOOR TO FIT EXISTING OPENING INSTALL IVES FS446 FLOOR STOP AND DOOR HOLDER

- DOOR SPECIFICATIONS**
1. THE LOCKING DEVICE TO BE READILY DISTINGUISHABLE AS LOCKED, SUCH AS A 'LOCKED/UNLOCKED' VISABLE INDICATOR/ ALSO, A READILY VISABLE DURABLE SIGN SHALL BE POSTED ON THE INSIDE OF THE GLASS IN 1" LETTERS, "THIS DOOR TO BE REMAIN UNLOCKED WHEN BUILDING IS OCCUPIED".
 2. THRESHOLD AT DOORWAYS SHALL NOT EXCEED 1/2" IN HEIGHT. RAISED THRESHOLD AND FLOOR LEVEL CHANGES AT ACCESSIBLE DOORWAYS SHALL BE BEVELED WITH A SLOPE NO GREATER THAN 1:2
 3. DOOR HARDWARE, HANDLES, PULLS, LATCHES LOCKS AND OTHER OPERATING DEVICES ON ACCESSIBLE DOORS SHALL HAVE A SHAPE THAT IS EASY TO GRASP WITH ONE HAND AND DOES NOT REQUIRE TIGHT GRASPING, TIGHT PINCHING, OR TWISTING OF THE WRIST TO OPERATE. LEVER-OPERATED MECHANISMS, PUSH-TYPE MECHANISMS, AND U-SHAPED HANDLES ARE ACCEPTABLE DESIGNS.
 4. HARDWARE REQUIRED FOR ACCESSIBLE DOOR PASSAGE SHALL BE MOUNTED NO HIGHER THAN 48 IN (1220 MM) ABOVE FINISHED FLOOR.
 5. DOOR CLOSERS. IF A DOOR HAS A CLOSER, THEN THE SWEEP PERIOD OF THE CLOSER SHALL BE ADJUSTED SO THAT FROM AN OPEN POSITION OF 90 DEGREES, THE DOOR WILL TAKE AT LEAST 3 SECONDS TO MOVE TO A POINT 2 IN (75MM) FROM THE LATCH, MEASURED TO THE LEADING EDGE OF THE DOOR.
 6. DOOR OPENING FORCE. THE MAXIMUM FORCE FOR PUSHING OR PULLING OPEN A DOOR SHALL BE AS FOLLOWS:
 - 8.1. (A) EXTERIOR HINGED DOORS: (RESERVED)
 - 8.2. (B) INTERIOR HINGED DOORS: 5 LBF (22.2N)
 - 8.3. (C) SLIDING OR FOLDING DOORS: 5 LBF (22.2n)
 7. THESE FORCES DO NOT APPLY TO THE FORCE REQUIRED TO RETRACT LATCH BOLTS OR DISENGAGE OTHER DEVICES THAT HOLDS THE DOOR IN A CLOSED POSITION.



- ROOM FINISH TAG**
- WALL FINISH LEGEND: EACH BOX CORRESPONDS TO THE 4 MAIN WALLS WITHIN THE ROOM
- CEILING HEIGHT
 - CEILING MATERIAL
 - CEILING COLOR/FINISH
 - BASE MOLDING
 - WAINSCOT
 - UPPER MOLDING
 - FLOOR FINISH
- *NOTE: "0" INDICATES THAT THERE IS NO MATERIAL OR FINISH REQUIRED IN THE FIELD.
- *NOTE: CONTRACTOR TO PROVIDE COLOR SAMPLES PRIOR TO APPLICATION.
- *NOTE: CONTRACTOR TO VERIFY MOLDINGS W/ INTERIOR ELEVATIONS

FINISHES AND GENERAL NOTES:

NAME	TYPE/MANUFACTURER	INSTALLATION/FINISH	COLOR
WALLS:			
PT1	PAINT	SHERWIN WILLIAMS	PRIME COAT, 2 COATS FINAL COLOR
PT2	PAINT	SHERWIN WILLIAMS	PRIME COAT, 2 COATS FINAL COLOR
PT3	PAINT	SHERWIN WILLIAMS	PRIME COAT, 2 COATS FINAL COLOR
WAINSCOT			
WC1	WAINSCOT	GALVANIZED CORRUGATED METAL	SEE DETAIL 8/A3.1
FLOORS:			
EP 1	POLYUREA SHOP FLOOR SYSTEM	PENNTEK OR APPROVED QUAL	NON SLIP FLOOR CONTRACTOR TO INSTALL PER MANUFACTURER'S SPECS.
CEILING			
PL1	MDO SIGN GRADE PLYWOOD 1/2" PIANTED	1/2" MDO SIGN BOARD	TAPE AND MUD AS YOU WOULD DRYWALL PAINT - PRIME COAT, 2 COATS FINAL COLOR
EXTERIOR			
HP1	HARDI PLANK	HARDI	PAINT - PRIME COAT, 2 COATS FINAL COLOR
AG	SILOZANE ANTI GRAFFITI COATING	SHERWIN WILLIAMS	APPLY TO FINISHED PAINTED SURFACE PER MFG'S RECOMENATIONS
EX = EXISTING			
1. ALL COLOR, MATERIAL AND FINISH APPLICATIONS TO BE APPROVED BY THE OWNER AND THE ARCHITECT PRIOR TO APPLICATION. THE CONTRACOR SHALL PROVIDE SAMPLES FOR REVIEW AND APPROVAL			
2. ALL FINISHES SHALL BE APPLIED ACCORDING TO MANUFACTURER SPECIFICATIONS CONTRACTORS SHALL COORDINATE APPLICATIONS WITH OTHER TRADES TO AVOID DAMAGE TO OTHER BUILDING SYSTEMS			

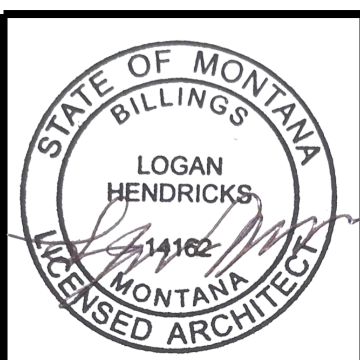
RESTROOM EQUIPMENT SCHEDULE

TAG	FIXTURE	MANUFACTURER	MODEL NO.	POWER	NOTES	RESPONSIBILITY
(R1)	BABY CHANGING STATION	KOALA	KOALA KARE KB300-05	NONE	WHITE GRANITE 05 MOUNTING HEIGHT: MOUNT SO THAT WORKING SURFACE IS 34" MAX 27" MIN WHEN IN USE PER ADA	CONTRACTOR
(R2)	HAND DRYER	XLERATOR	H-4529	120	TEXTURED GRAPHITE	CONTRACTOR
(R3)	SOAP DISPENSER	BOBRICK	B-2111	NONE	SATIN FINISH STAINLESS STEEL	CONTRACTOR
(R4)	TOILET PAPER HOLDER	CONTRACTOR TO FABRICATE DISPENSER TO MATCH PARK DEPARTMENTS STANDARD		NONE	MATCH PARK DEPARTMENTS STANDARD	CONTRACTOR
(R5)	SANITARY NAPKIN DISPOSAL	BOBRICK	B-270	NONE	SATIN FINISH STAINLESS STEEL	CONTRACTOR
(R6)	18X36 MIRROR	FABBACK	2064 GRAY POLYCARBONATE MIRROR	NONE	ARMADILLO SCRATCH COATING MOUNT IN ALUM. J-MTL FRAME	CONTRACTOR
(R7)	GRAB BARS	BOBRICK	B-6806, 18" , 36 & 48" OR EQ	NONE	SATIN FINISH STAINLESS STEEL	CONTRACTOR

1. ALL EQUIPMENT AND LOCATIONS TO BE APPROVED BY THE OWNER PRIOR TO INSTALLATION. ADA & ICC A117.1 - 2009 REQUIREMENTS MUST BE FOLLOWED TO THE LETTER. NOTE: NOT ALL MANUFACTURER RECOMMENDED MOUNTING HEIGHTS ARE ACCURATE.

2. ALL EQUIPMENT SHALL BE INSTALLED ACCORDING TO MANUFACTURER SPECIFICATIONS. THE CONTRACTOR SHALL BE RESPONSIBLE FOR PROVIDING UTILITY LATERALS TO ALL EQUIPMENT LOCATIONS. THE CONTRACTOR SHALL ALSO COORDINATE INSTALLATION WITH OTHER TRADES TO AVOID DAMAGE TO OTHER BUILDING SYSTEMS.

3. ELECTRICAL AND PLUMBING TRADES SHALL REFER TO EQUIPMENT CUT SHEETS FOR APPROPRIATE PLACEMENT FOR BOTH POWER SUPPLY AND PLUMBING REQUIREMENTS.



SECOND NATURE CONSULTING
 LANDSCAPE ARCHITECTURE & PLANNING
 (406) 850-0461 www.secondnature.consulting

REVISIONS

NO.	DATE	DESCRIPTION

CASTLE ROCK RESTROOMS REMODEL
 1385 GOVERNORS BLVD
 BILLINGS, MT 59105
FLOOR PLAN

241005
 DRAWN BY LH
 APPROVED LH
 DATE 5.31.24
A1.1

