

ORDINANCE 24-_____

AN ORDINANCE OF THE CITY OF BILLINGS,
PROVIDING THE ZONE CLASSIFICATION for Galaxy
Subdivision, Block 3 Lots 1-6, 8, 10, 11, 13, and 14-29;
Block 4, Lots 15 – 44; Block 5, Lots 10 – 18 and Park; and
Block 6, Lots 2-9, 11-24, 26, 31 and 33, BE AMENDED

BE IT ORDAINED BY THE CITY COUNCIL OF THE CITY OF BILLINGS THAT:

Section 1. RECITALS. *Title 76, Chapter 2, Part 3, MCA, and Sections 27-1628, BMCC,* provide for amendment to the City Zoning Map from time to time. The City Zoning Commission and staff have reviewed the proposed zoning for the real property hereinafter described. The Zoning Commission and staff have considered the ten (10) criteria required by Title 76, Chapter 2, Part 3, MCA. The recommendations of the Zoning Commission and staff have been submitted to the City Council, and the City Council, in due deliberation, has considered the ten (10) criteria required by state law.

Section 2. DESCRIPTION. The parcels listed above and in Exhibit A are presently zoned **Planned Development - Galaxy** and are shown on the official zoning map within this zone district.

Section 3. ZONE DISTRICT AMENDMENT. The official zoning map is hereby amended and the zoning for the parcels listed above and in Exhibit A, is hereby changed from **Planned Development**, to **Suburban Neighborhood (N3)**, **Mid-Century Neighborhood (N2)**, and **Mixed Residential 2 (NX2)** as shown on Exhibit A, and from the effective date of this ordinance, shall be subject to all the rules and regulations pertaining to **Suburban Neighborhood (N3)**, **Mid-Century Neighborhood (N2)**, and **Mixed Residential 2 (NX2)**, as set out in the Billings, Montana City Code.

Section 4. EFFECTIVE DATE. This ordinance shall be effective thirty (30) days after second reading and final adoption as provided by law.

Section 5. REPEALER. All resolutions, ordinances, and sections of the City Code inconsistent herewith are hereby repealed.

Section 6. SEVERABILITY. If any provision of this ordinance or the application thereof to any person or circumstances is held invalid, such invalidity shall not affect the other

provisions of this ordinance which may be given effect without the invalid provisions or application, and, to this end, the provisions of this ordinance are declared to be severable.

PASSED by the City Council on first reading this 23rd day of September, 2024.

PASSED, ADOPTED and APPROVED on second reading this 14th day of October, 2024.

CITY OF BILLINGS

BY: _____

William A. Cole, Mayor

Attest:

BY: _____

Denise R. Bohlman, City Clerk

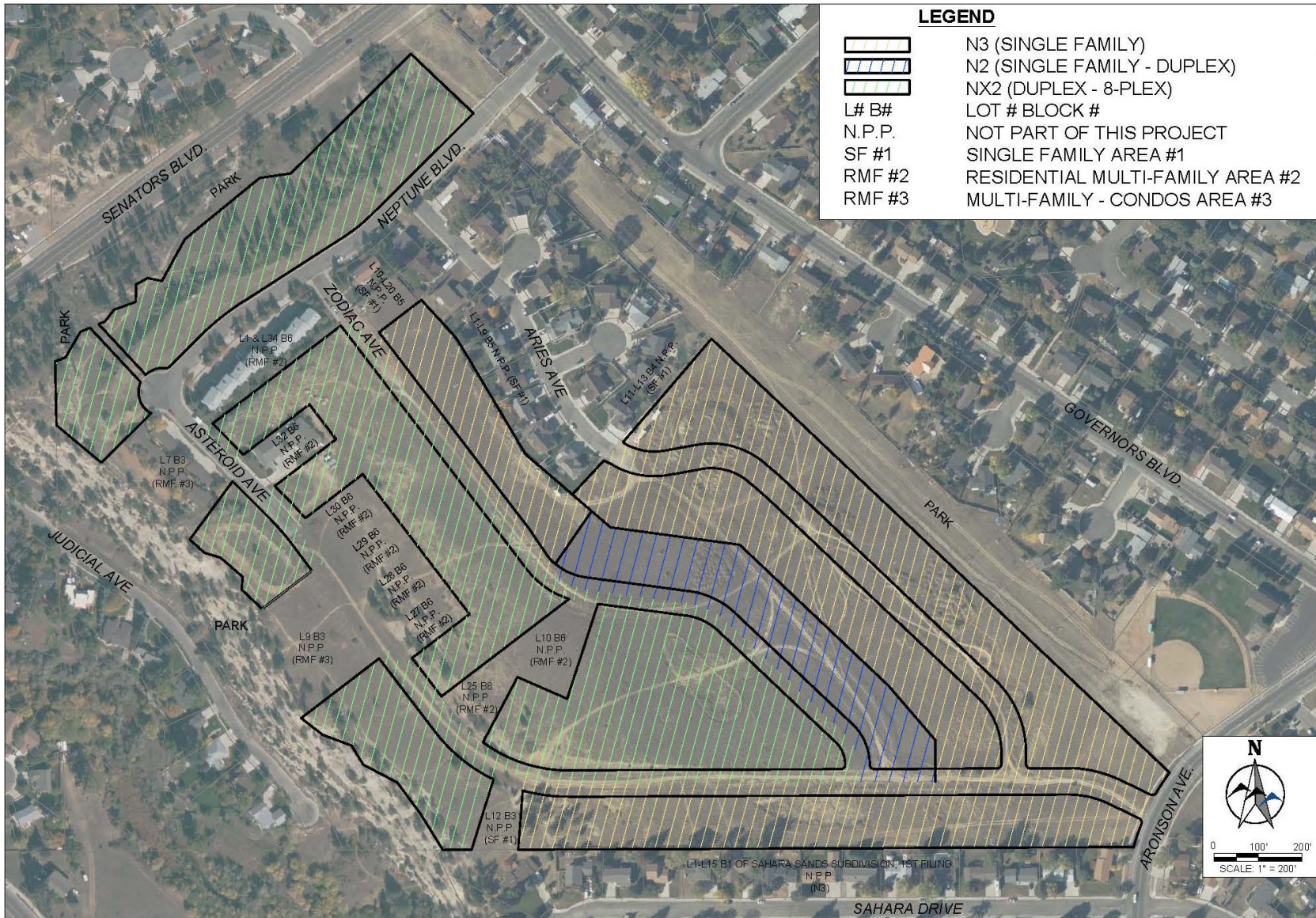
Zone Change 1055 – Galaxy Planned Development

EXHIBIT A



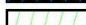
Lot	Block	Subdivision	TaxCode
1	3	Galaxy Subdivision	A24485
2	3	Galaxy Subdivision	A24486
3	3	Galaxy Subdivision	A24487
4	3	Galaxy Subdivision	A24488
5	3	Galaxy Subdivision	A24489
6	3	Galaxy Subdivision	A24490
8	3	Galaxy Subdivision	A24492
10	3	Galaxy Subdivision	A24494
11	3	Galaxy Subdivision	A24495
13	3	Galaxy Subdivision	A24497
14	3	Galaxy Subdivision	A24498
15	3	Galaxy Subdivision	A24499
16	3	Galaxy Subdivision	A24500
17	3	Galaxy Subdivision	A24501
18	3	Galaxy Subdivision	A24502
19	3	Galaxy Subdivision	A24503
20	3	Galaxy Subdivision	A24504
21	3	Galaxy Subdivision	A24505
22	3	Galaxy Subdivision	A24506
23	3	Galaxy Subdivision	A24507
24	3	Galaxy Subdivision	A24508
25	3	Galaxy Subdivision	A24509
26	3	Galaxy Subdivision	A24510
27	3	Galaxy Subdivision	A24511
28	3	Galaxy Subdivision	A24512
29	3	Galaxy Subdivision	A24513
33	6	Galaxy Subdivision	A24610
31	6	Galaxy Subdivision	A24608
26	6	Galaxy Subdivision	A24603
24	6	Galaxy Subdivision	A24601
23	6	Galaxy Subdivision	A24600
22	6	Galaxy Subdivision	A24599
21	6	Galaxy Subdivision	A24598
20	6	Galaxy Subdivision	A24597
19	6	Galaxy Subdivision	A24596
18	6	Galaxy Subdivision	A24595
17	6	Galaxy Subdivision	A24594
16	6	Galaxy Subdivision	A24593
15	6	Galaxy Subdivision	A24592
14	6	Galaxy Subdivision	A24591

Lot	Block	Subdivision	TaxCode
13	6	Galaxy Subdivision	A24590
12	6	Galaxy Subdivision	A24589
11	6	Galaxy Subdivision	A24588
9	6	Galaxy Subdivision	A24586
8	6	Galaxy Subdivision	A24585
7	6	Galaxy Subdivision	A24584
6	6	Galaxy Subdivision	A24583
5	6	Galaxy Subdivision	A24582
4	6	Galaxy Subdivision	A24581
3	6	Galaxy Subdivision	A24580
2	6	Galaxy Subdivision	A24579
18	5	Galaxy Subdivision	A24575
17	5	Galaxy Subdivision	A24574
16	5	Galaxy Subdivision	A24573
15	5	Galaxy Subdivision	A24572
14	5	Galaxy Subdivision	A24571
13	5	Galaxy Subdivision	A24570
12	5	Galaxy Subdivision	A24569
11	5	Galaxy Subdivision	A24568
PARK	5	Galaxy Subdivision	A24621A
10	5	Galaxy Subdivision	A24567
15	4	Galaxy Subdivision	A24528
16	4	Galaxy Subdivision	A24529
17	4	Galaxy Subdivision	A24530
18	4	Galaxy Subdivision	A24531
19	4	Galaxy Subdivision	A24532
20	4	Galaxy Subdivision	A24533
21	4	Galaxy Subdivision	A24534
22	4	Galaxy Subdivision	A24535
23	4	Galaxy Subdivision	A24536
24	4	Galaxy Subdivision	A24537
25	4	Galaxy Subdivision	A24538
26	4	Galaxy Subdivision	A24539
27	4	Galaxy Subdivision	A24540
28	4	Galaxy Subdivision	A24541
29	4	Galaxy Subdivision	A24542
30	4	Galaxy Subdivision	A24543
31	4	Galaxy Subdivision	A24544
32	4	Galaxy Subdivision	A24545
33	4	Galaxy Subdivision	A24546

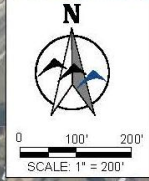
Lot	Block	Subdivision	TaxCode
34	4	Galaxy Subdivision	A24547
35	4	Galaxy Subdivision	A24548
36	4	Galaxy Subdivision	A24549
37	4	Galaxy Subdivision	A24550
38	4	Galaxy Subdivision	A24551
39	4	Galaxy Subdivision	A24552
40	4	Galaxy Subdivision	A24553
41	4	Galaxy Subdivision	A24554
42	4	Galaxy Subdivision	A24555
43	4	Galaxy Subdivision	A24556
44	4	Galaxy Subdivision	A24557



LEGEND

-  N3 (SINGLE FAMILY)
-  N2 (SINGLE FAMILY - DUPLEX)
-  NX2 (DUPLEX - 8-PLEX)
- L# B# LOT # BLOCK #
- N.P.P. NOT PART OF THIS PROJECT
- SF #1 SINGLE FAMILY AREA #1
- RMF #2 RESIDENTIAL MULTI-FAMILY AREA #2
- RMF #3 MULTI-FAMILY - CONDOS AREA #3

PREPARED BY WWC ENGINEERING 650 S. 24TH ST. W. SUITE 204 BILLINGS, MT 59102 (406) 884-2918 www.wwcengineering.com	PROJECT NO. 2024-138	JAY LYNDES GALAXY SUBDIVISION PROPOSED ZONE CHANGE EXHIBIT CITY OF BILLINGS, MONTANA	DESIGNED BY: ZSL DRAWN BY: ZSL CHECKED BY: GTR DATE: 6/19/2024	SHEET B	<table border="1" style="width: 100%; border-collapse: collapse;"> <thead> <tr> <th>NO.</th> <th>REVISION</th> <th>BY</th> <th>DATE</th> </tr> </thead> <tbody> <tr><td> </td><td> </td><td> </td><td> </td></tr> <tr><td> </td><td> </td><td> </td><td> </td></tr> <tr><td> </td><td> </td><td> </td><td> </td></tr> <tr><td> </td><td> </td><td> </td><td> </td></tr> <tr><td> </td><td> </td><td> </td><td> </td></tr> <tr><td> </td><td> </td><td> </td><td> </td></tr> <tr><td> </td><td> </td><td> </td><td> </td></tr> <tr><td> </td><td> </td><td> </td><td> </td></tr> <tr><td> </td><td> </td><td> </td><td> </td></tr> <tr><td> </td><td> </td><td> </td><td> </td></tr> </tbody> </table>	NO.	REVISION	BY	DATE																																								
NO.	REVISION	BY	DATE																																														



L1-L15 B1 OF SAHARA SANDS SUBDIVISION, 1ST FILING
 N.P.P.
 (N3)