

7/24/2024 11:56:26 AM PEC STANDARD.BM.CTB

Z:\REE Development\2024-011 Village Co-Op\CADD\DWG\Plan\24-011 ZHP 5th Prelim.dwg

PRELIMINARY PLAT OF
ZIMMERMAN HOME PLACE SUBDIVISION, 5TH FILING
 BEING LOTS 2 & 3, BLOCK 1 OF ZIMMERMAN HOME PLACE SUBDIVISION, 3RD FILING
 LOCATED IN THE SW 1/4 OF SECTION 34, TOWNSHIP 01 NORTH, RANGE 25 EAST, P.M.M., CITY OF BILLINGS,
 YELLOWSTONE COUNTY, MONTANA

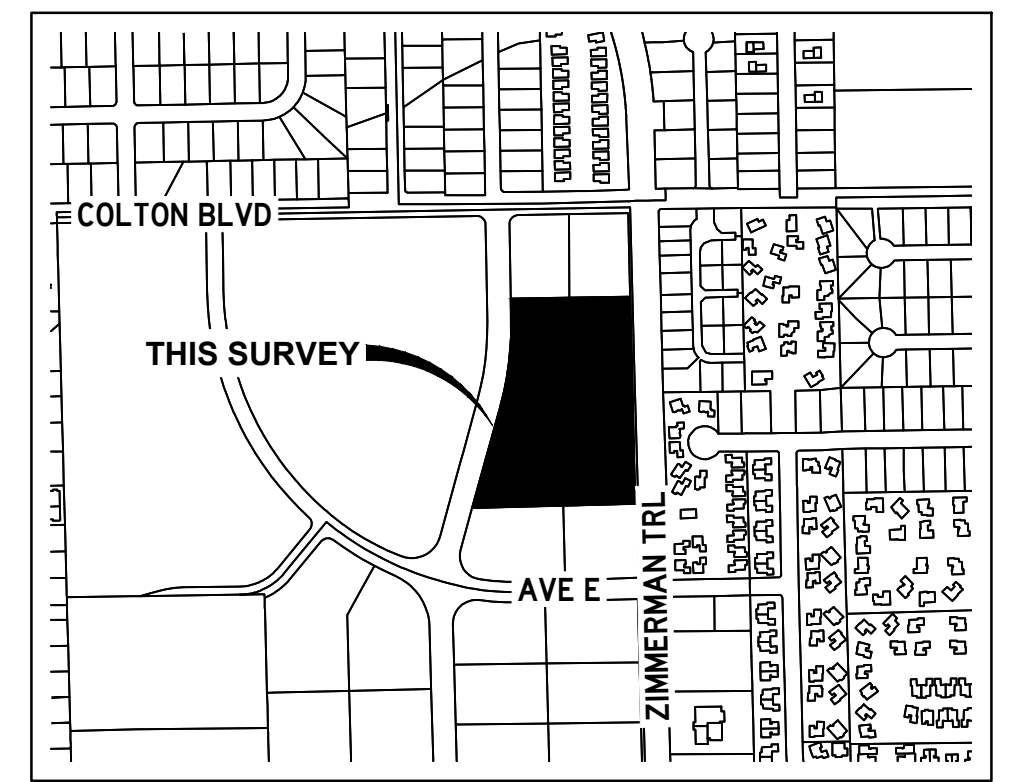
PREPARED FOR : HIGHLANDS ZHP SUBDIVISION, LLC
 L & L ZHP SUBDIVISION, LLC
 LUDWIG CONSULTING, LLC



PREPARED BY : PERFORMANCE ENGINEERING, LLC

TOTAL AREA OF SUBDIVISION : ± 7.512 ACRES

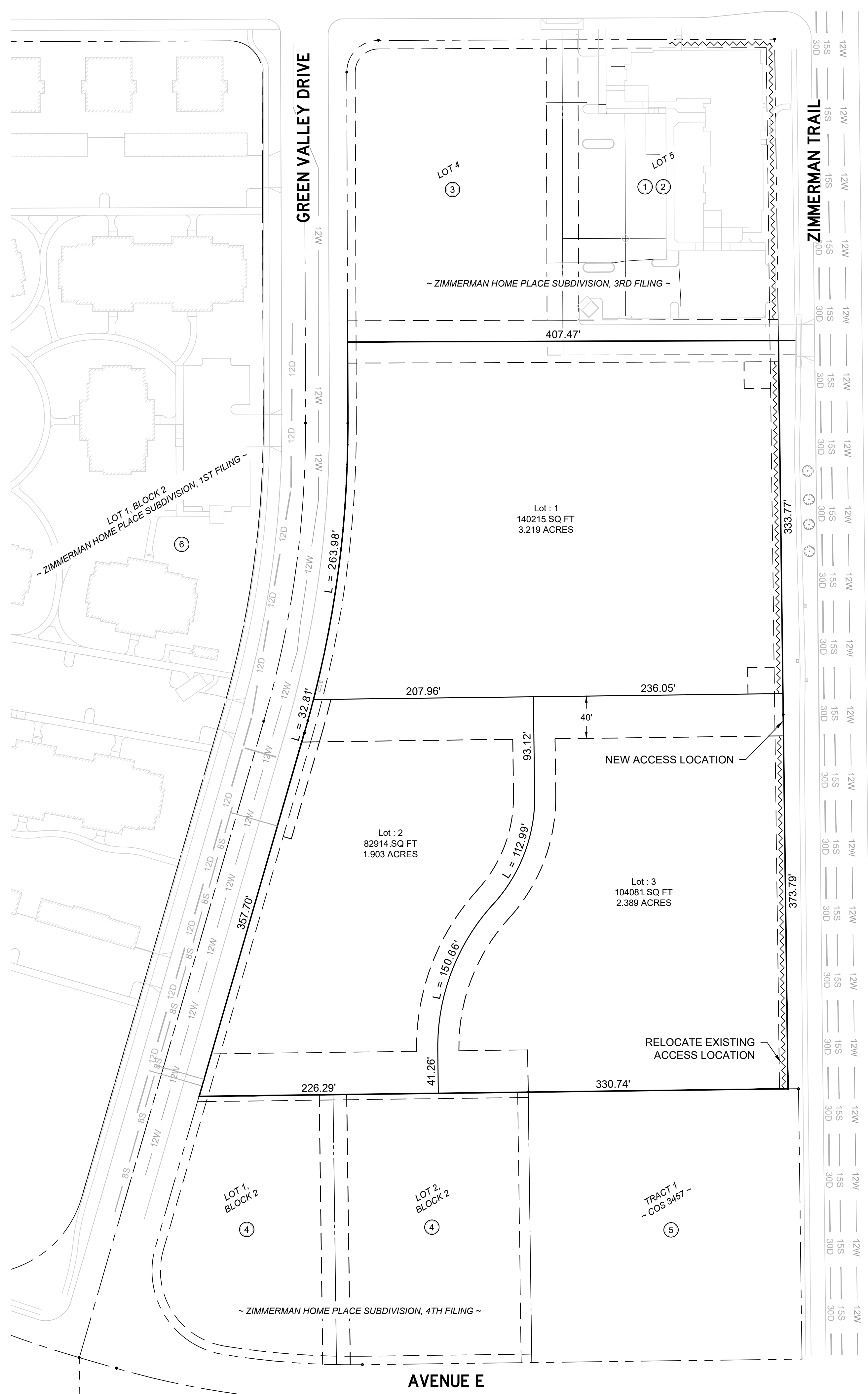
JUNE 2024



VICINITY MAP
NOT TO SCALE

SITE DATA	
GROSS AREA	7.512 ACRES
NET AREA	7.512 ACRES
LOT COUNT	3
MAX. LOT AREA	3.219 ACRES
MIN. LOT AREA	1.903 ACRES
ZONING	NO - NEIGHBORHOOD OFFICE

COLTON BOULEVARD



PROPERTY OWNER INFORMATION

- ① ROVE HOLDINGS, LLC
3312 4TH AVENUE N
BILLINGS, MT 59101
- ② PERFORMANCE HOLDINGS, LLC
608 N 29TH ST
BILLINGS, MT 59101
- ③ HIGHLANDS ZHP SUBDIVISION, LLC ET AL
2116 BROADWATER AVE, SUITE 101
BILLINGS, MT 59102
- ④ KT DENTAL PROPERTIES, LLC
1601 ZIMMERMAN TRAIL, SUITE 2
BILLINGS, MT 59102
- ⑤ MED-MAP, LLC
3302 4TH AVENUE N, SUITE 125
BILLINGS, MT 59101
- ⑥ ZIMMERMAN LUXURY APARTMENTS, LLC
2116 BROADWATER AVE, SUITE 101
BILLINGS, MT 59102

