

TRACT 3
CERTIFICATE OF SURVEY NO. 2735

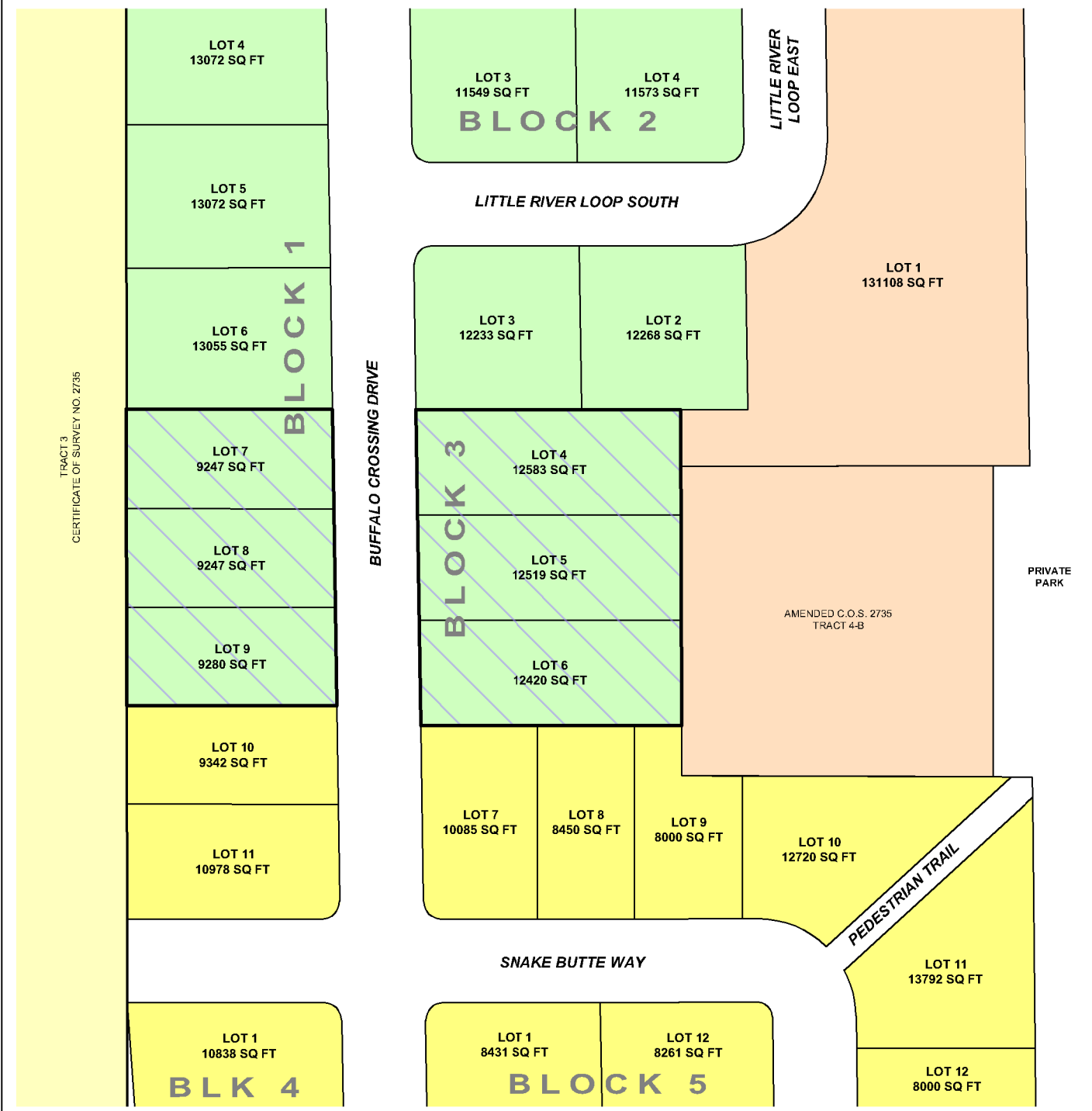
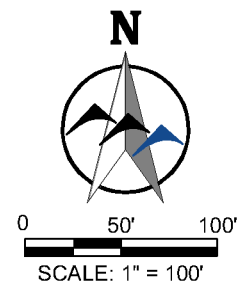


EXHIBIT DRAWING

LOTS 7-9, BLOCK 1 & LOTS 4-6, BLOCK 3 BUFFALO CROSSING SUBDIVISION CITY OF BILLINGS, MONTANA

BIRELY RIGHT-OF-WAY
TRAILS WEST SUBDIVISION, FIRST FILING

- LEGEND**
- NX2 - MIXED RESIDENTIAL
 - N2 - MID-CENTURY NEIGHBORHOOD RESIDENTIAL
 - N3 - SUBURBAN NEIGHBORHOOD RESIDENTIAL
 - RR3 - RURAL RESIDENTIAL
 - PROPOSED N2 - MID-CENTURY NEIGHBORHOOD RESIDENTIAL



<p>DESIGNED BY: AMR DRAWN BY: AMR CHECKED BY: GTR DATE: JAN, 2025</p>	<p>SHEET A</p>
<p>PREPARED FOR BUFFALO CROSSING, LLC</p>	
<p>PREPARED BY WWC ENGINEERING 550 S. 24TH ST. W., SUITE 201 BILLINGS, MT 59102 (406) 894-2210 www.wwcengineering.com</p>	
<p>BUFFALO CROSSING ZONE CHANGE EXHIBIT DRAWING CITY OF BILLINGS, MONTANA</p>	