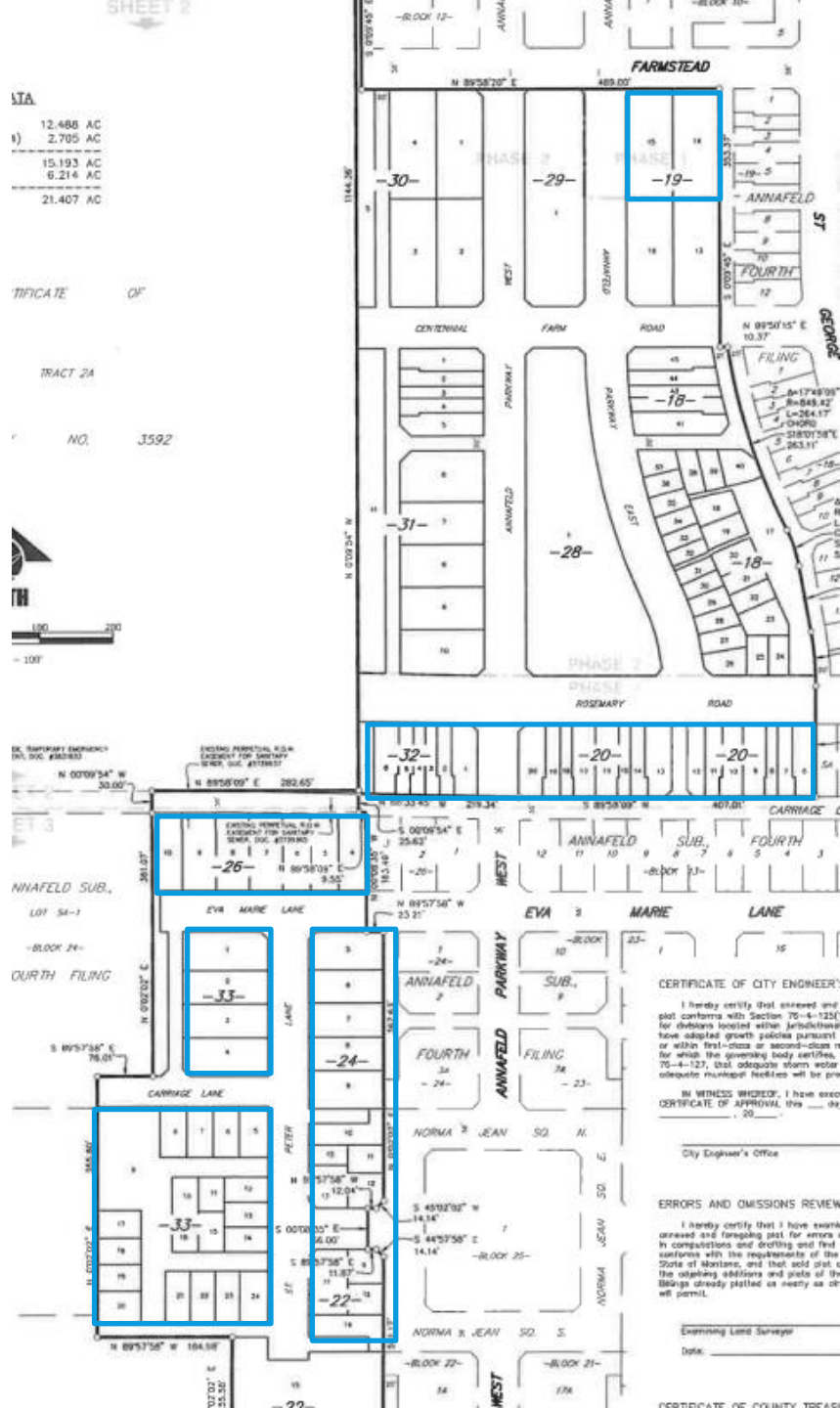




SID 1428
ANNAFELD SUBDIVISION
5TH FILING
STREETLIGHTS



12.488 AC
 2.705 AC
 15.193 AC
 6.214 AC
 21.407 AC

TRACT 2A
 NO. 3592



CERTIFICATE OF CITY ENGINEER:

I hereby certify that annexed map conforms with Section 70-4-122 for divisions located within jurisdiction have adopted growth policies pursuant to which the governing body certifies, 70-4-122, that adequate storm water adequate municipal facilities will be provided.

IN WITNESS WHEREOF, I have executed this Certificate of Approval this 20th day of _____, 20__.

 City Engineer's Office

ERRORS AND OMISSIONS REVIEW

I hereby certify that I have examined and compared said map for errors in computations and drafting and find same conform with the requirements of the State of Missouri, and that said map, with the omissions and parts of the drawings already stated as correct as they will permit.

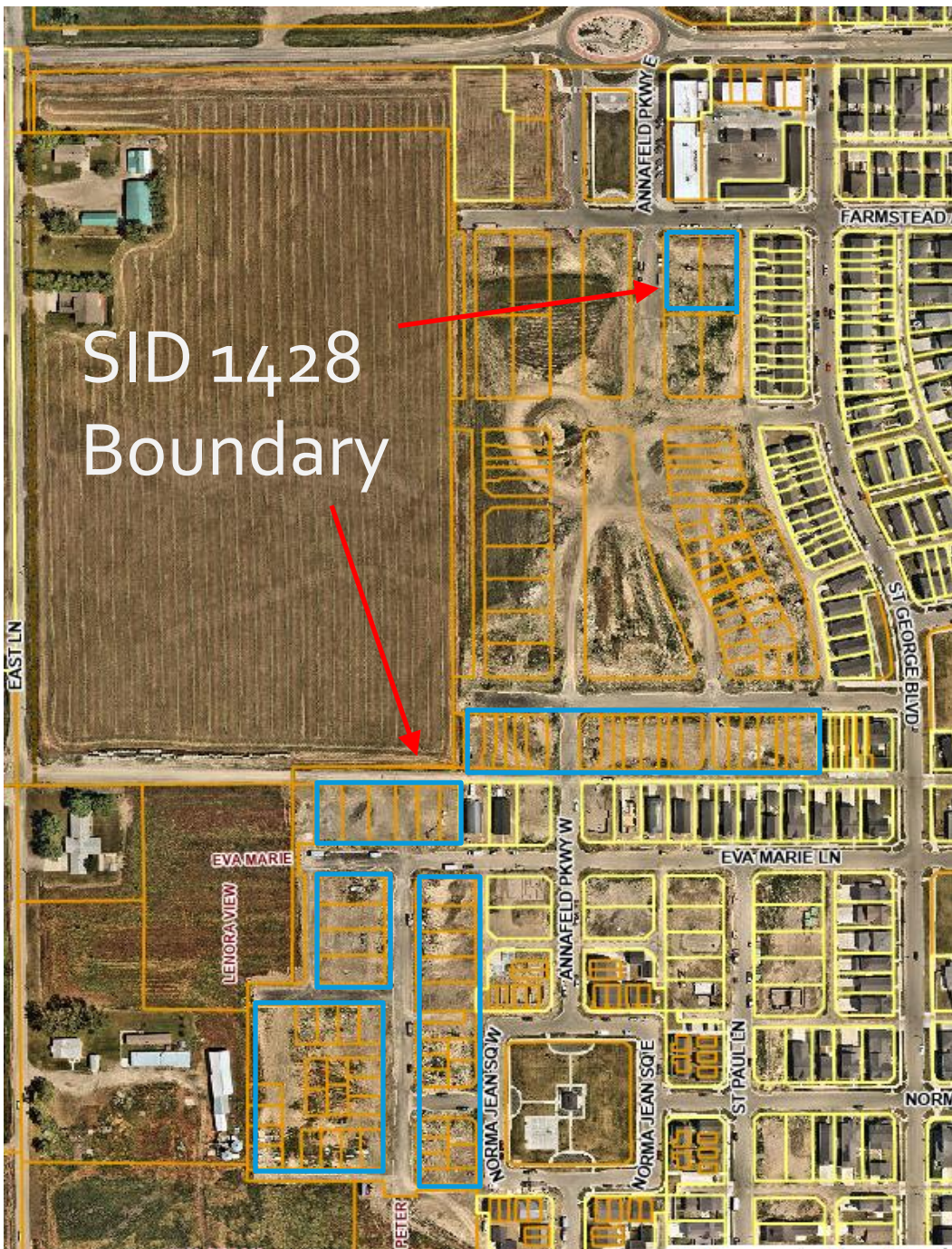
 Examining Land Surveyor

Date: _____

CERTIFICATE OF COUNTY TREASURER

SID 1428 DISTRICT BOUNDARY

SID 1428 DETAILS



- Total Project Cost - \$248,000.00
 - 69 Parcels in the District (68 owned by McCall's) serving 78 building units
 - Improvements to be assessed
 - Streetlights
 - Assessment (69 Properties) - \$1.1632 per square foot for each property
 - Average Assessment per parcel - \$3,594.20
 - Average Assessment per linear foot frontage - \$116.54
 - Per Unit Cost of \$3,180.00
- Lights installed by SID 1428 will provide safe roadway driving conditions and aid in security by providing enhanced natural surveillance

PROJECT SCHEDULE

- Resolution of Intent: February 10, 2025
- Resolution to Create: March 10, 2025 – this meeting
 - No protests
- Construction Bid: January 21, 2025 – Bid Award to Millennium Electric this meeting
- Construction completed: Late summer 2025
- Assessments on taxes fall 2025

