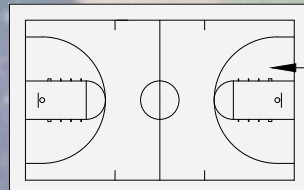




EXISTING TENNIS COURTS

PIONEER PARK

3RD STREET WEST



LOCATE COURT IN
SOUTHWEST CORNER
OF PIONEER PARK

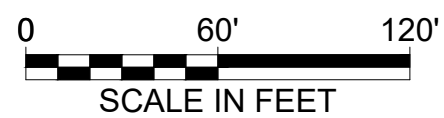
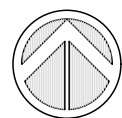
COORDINATE EXACT
LOCATION OF COURT
WITH PARKS' STAFF

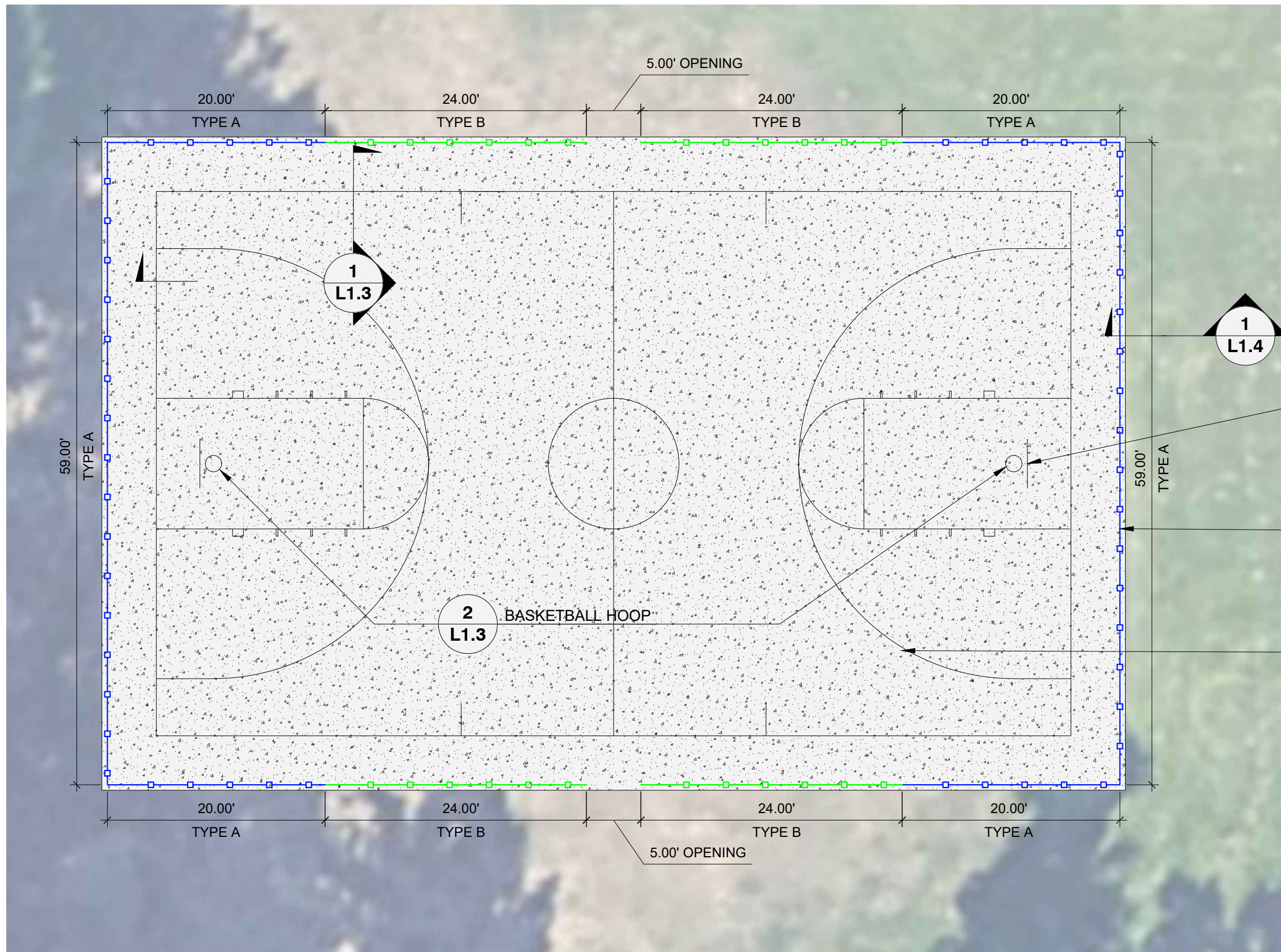
SENIOR HIGH SCHOOL
TRACK AND FIELD





PIONEER PARK BASKETBALL COURT

L1.1 - BID EXHIBIT
COURT LOCATION
MAY 22, 2025





- 
TYPE A FENCE
 GALVANIZED
 8'-0" HEIGHT
 TOP, MID, & BOTTOM RAIL
 - 
TYPE B FENCE
 GALVANIZED
 4'-0" HEIGHT
 TOP & BOTTOM RAIL
 TOP RAIL TOPPER
- ALTERNATE BID - PROVIDE BID NUMBER FOR BLACK PVC DIPPED FABRIC

(2) HEAVY DUTY GOOSENECK BASKETBALL HOOPS

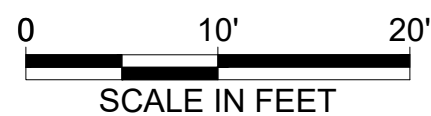
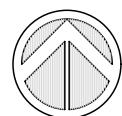
PLACE FENCE 18" FROM EDGE OF CONCRETE SLAB

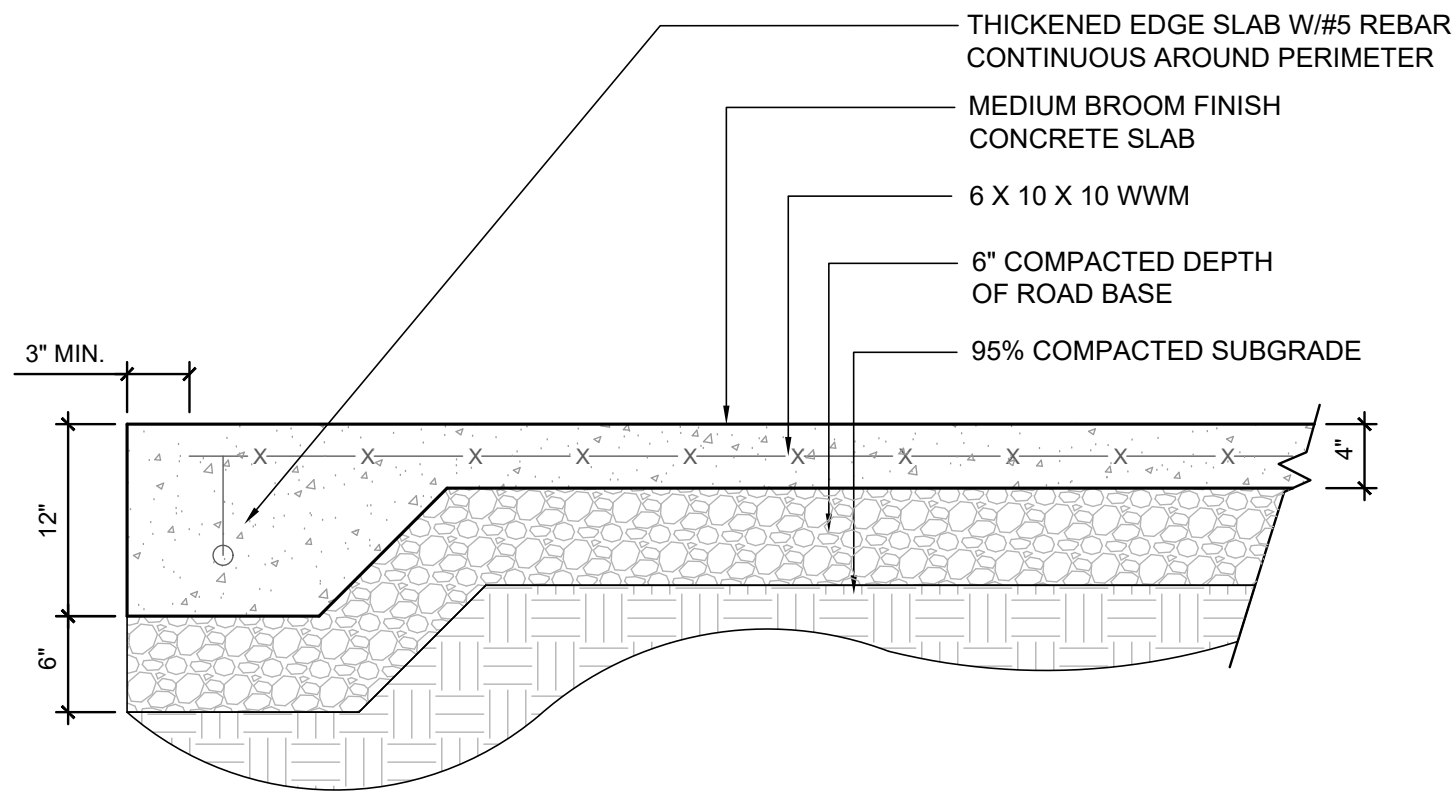
CONFIRM LAYOUT AND POSITIONING WITH PARKS STAFF PRIOR TO STAKING AND FORMING



PIONEER PARK BASKETBALL COURT

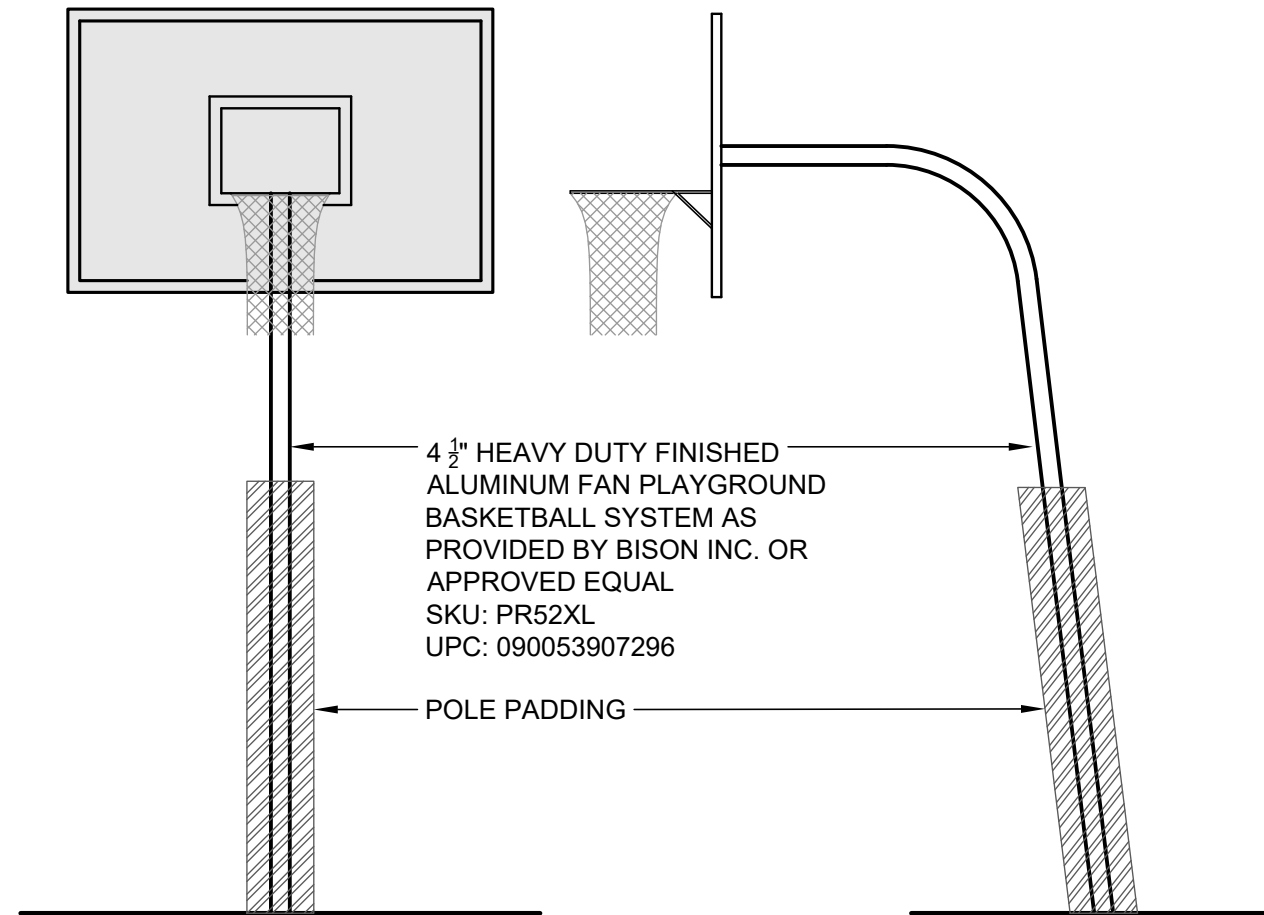
L1.2 - BID EXHIBIT
 COURT LAYOUT
 MAY 22, 2025





1 CONCRETE COURT PAVING
1" = 1'-0"

P-CO-SPO-23

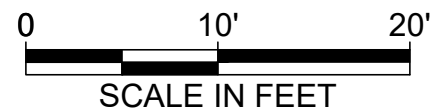
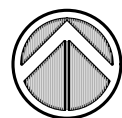


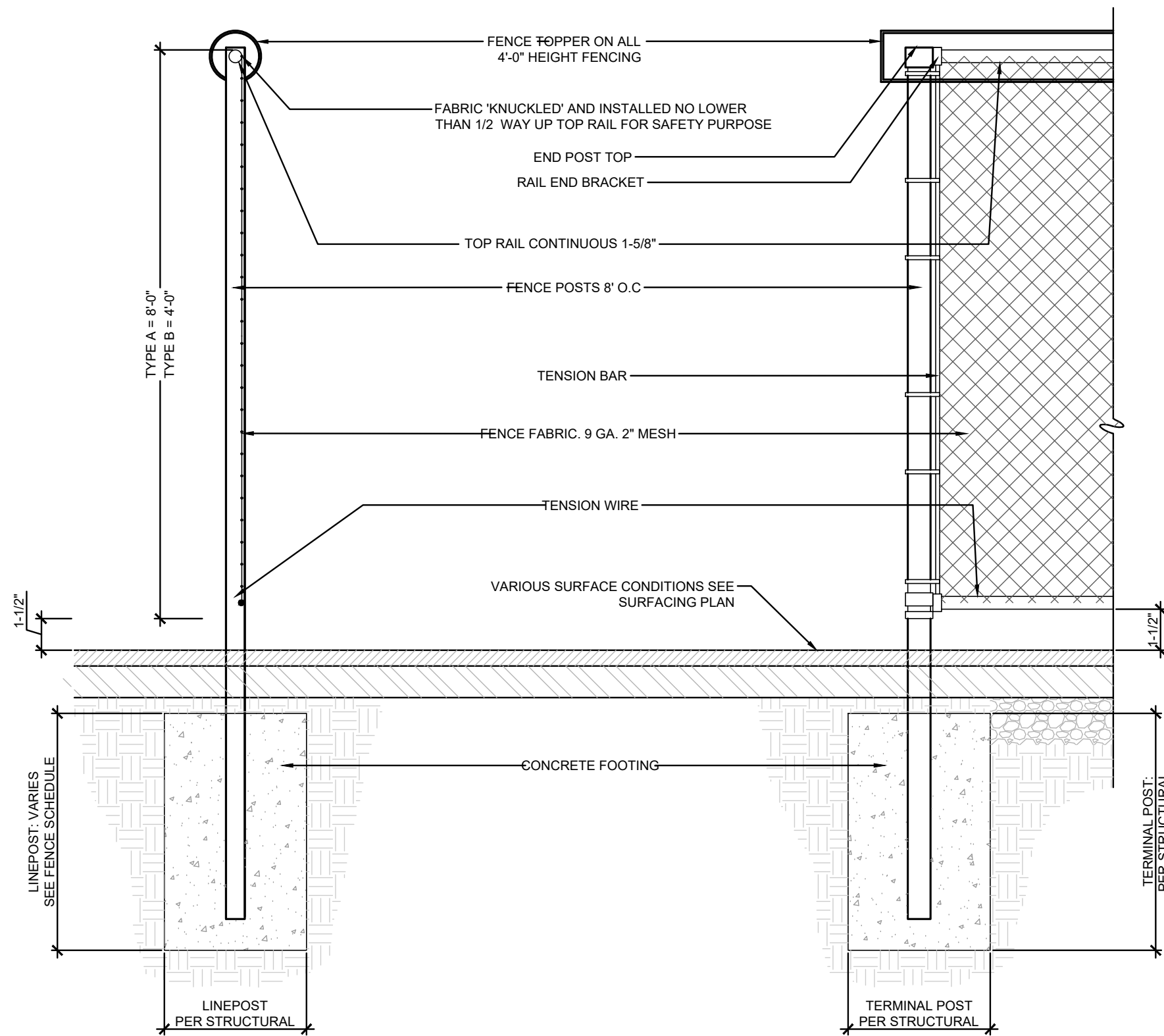
2 BASKETBALL HOOP
3/8" = 1'-0"

P-CO-SPO-24

PIONEER PARK BASKETBALL COURT

L1.3 - BID EXHIBIT
COURT DETAILS
MAY 22, 2025





FENCE SECTION/ELEVATION

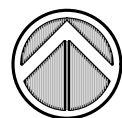
1 CHAINLINK FENCE
NTS

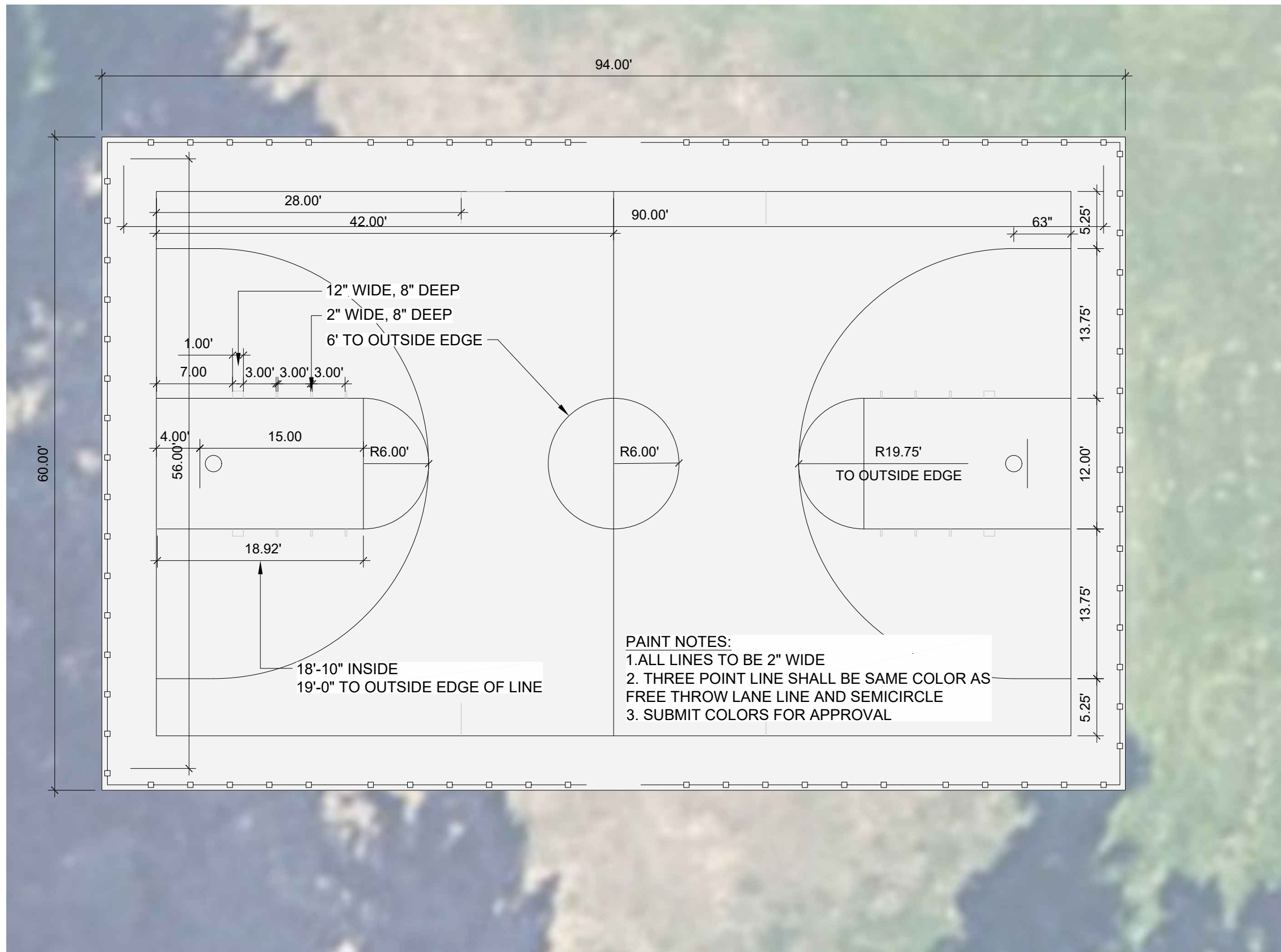
P-CO-KAD-01



PIONEER PARK BASKETBALL COURT

L1.4 - BID EXHIBIT
COURT DETAILS
MAY 22, 2025





PIONEER PARK BASKETBALL COURT

L1.5 - BID EXHIBIT
 COURT PAINTING LAYOUT
 MAY 22, 2025

