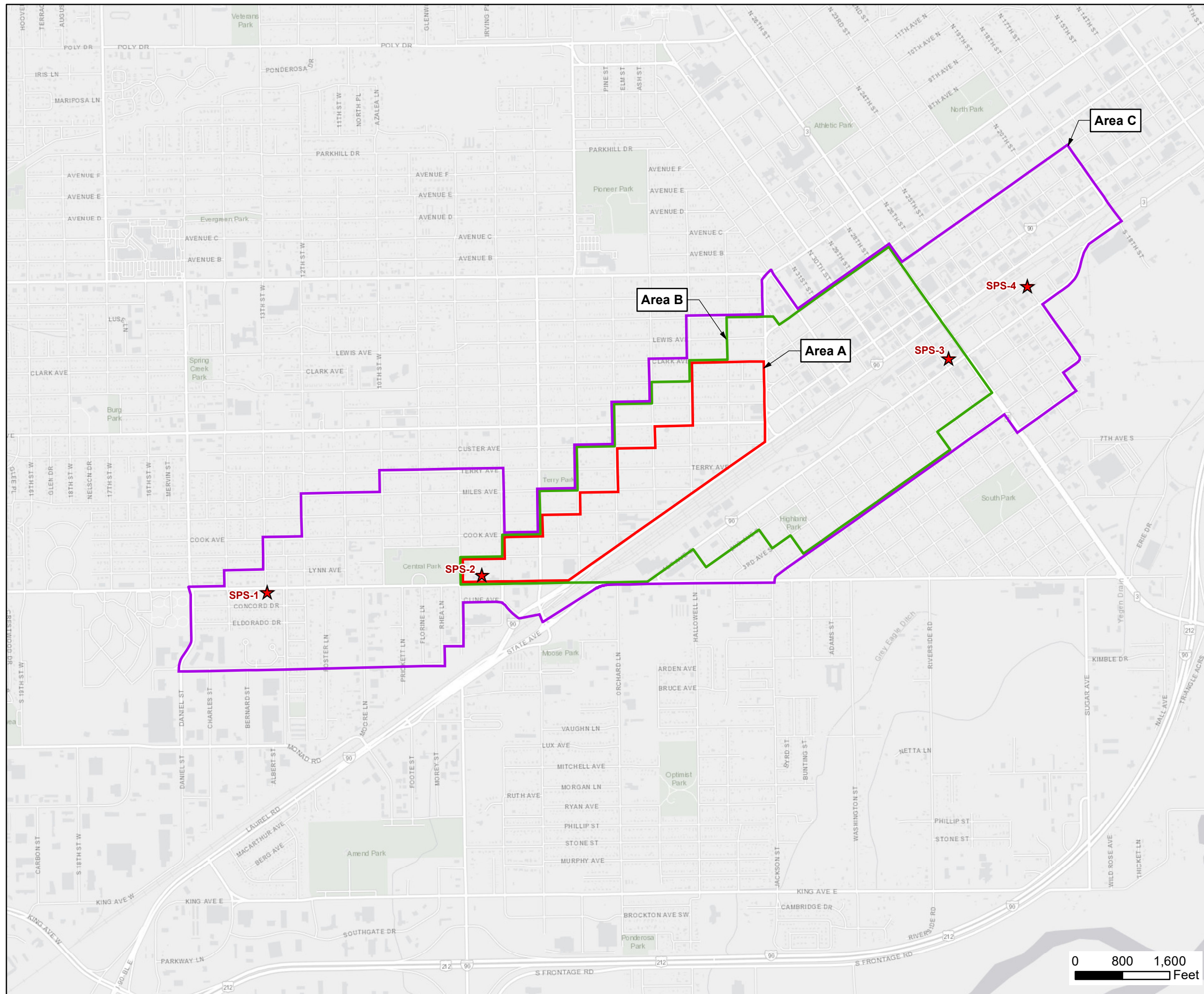


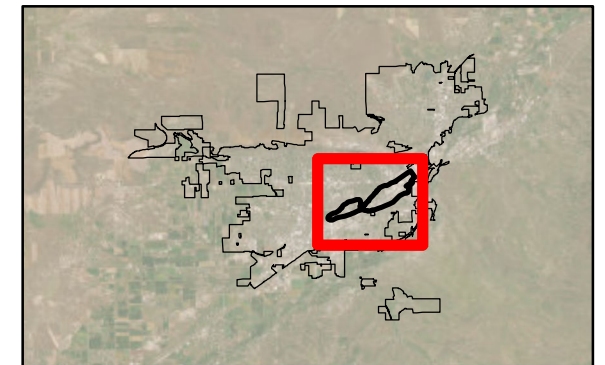
**Figure 4-1
Institutional Control Areas**

Legend

- ★ Suspected PCE Source Area
- Institutional Control Areas**
- Area A
- Area B
- Area C



Notes:
 BPCE = Billings Tetrachloroethene
 PCE = Tetrachloroethene
 SPS = Suspected PCE Source Area



DATA SOURCES
 -TechLaw. 2023. Sampling Activities Report 2022 Groundwater Sampling Event Final. Billings PCE Superfund Site. Yellowstone County, Montana. June.
 -Esri, HERE, Garmin, (c) OpenStreetMap contributors, and the GIS user community
 Source: Esri, Maxar, Earthstar Geographics, and the GIS User Community

GILBANE AECOM JV

**BILLINGS PCE SITE
FOCUSED FEASIBILITY STUDY**

DESIGNED BY:	RL	Billings PCE Site OU1 Billings, MT	
DRAWN BY:	SB		
CHECKED BY:	RL	SCALE: 1:19,200	CONTRACT NUMBER: 68HE0318D0008
SUBMITTED BY:	RL	DATE: 7/29/2024	DELIVERY ORDER: 68HE0821F0070
		COORDINATE SYSTEM: NAD 1983 2011 StatePlane Montana FIPS 2500 Ft Intl	

