



SNOW OPERATIONS



GOAL

- ❖ Safety
- ❖ Efficient commutes
- ❖ Good stewards of resources

APPROACH

- ❖ Adaptable
- ❖ Storm specific response
- ❖ Efficient use of materials
- ❖ Largest impact to greatest number of people




Levels of priority

- ❖ **Arterials** - Rimrock, 24th, King, Wicks
- ❖ **Collectors** - Nutter, Parkhill, 8th St W, Ironwood
- ❖ **Local/Residential** - Monroe, Custer, Prestwick, Elm

MAJOR ACTIVITIES

- ❖ Intersection snow/ice
- ❖ Plowing & hauling
- ❖ Residential plowing
- ❖ Trails, crosswalks, special attention areas

INTERSECTION ICE/SNOW

|  | Sand | Ice Slicer | Liquid Deicer |
|---|--|--|---|
| Temperature | Any temperature | 10 °F and rising | 20 °F and rising |
| Cost to apply | \$ | \$\$\$\$ | \$\$\$\$\$\$ |
| Traction | Excellent | Good | None |
| Cleanup | Must be swept up after | None | None |
| Effect | 10% salt for clumping, minimal melting, minimal tracking | Excellent melting, takes some time to brine, excellent tracking | Excellent melting, instant effects, good tracking |
| Benefits | Cheapest Best traction | Best melting, same gradation as sand and can be used by all of our sanders | Instant effects No cleanup |

PLOWING AND HAULING

Plowing

- ❖ **Center stack**
- ❖ Extra truck to clear openings
- ❖ Must haul away
- ❖ **Curb line**
- ❖ Boulevards – plow to the curb and done
- ❖ **Downtown**
- ❖ Parking
- ❖ 2-way conversion
- ❖ **Arterial & Collectors**
- ❖ **24 hrs to complete once snow stops**
- ❖ **Issues**
- ❖ Parking & traffic

❖ 7

Hauling

- ❖ **7 days after storm ends**
- ❖ **Snow dump sites**
 - ❖ Field of Dreams
 - ❖ daytime operations only
 - ❖ Airport site
- ❖ **Help from other divisions**
 - ❖ Distribution & Collection
 - ❖ Solid Waste
- ❖ **Private Contractors**

RESIDENTIAL PLOWING

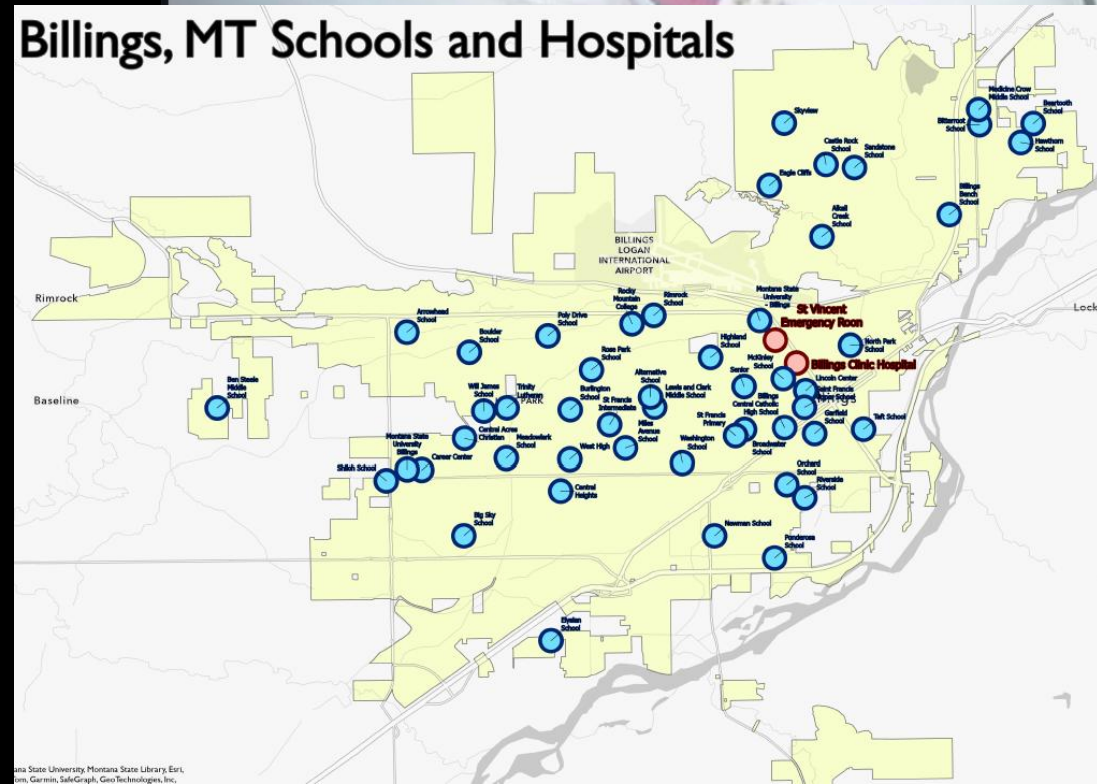
Pros & Cons

- ❖ Concentrates the snow at the curb line
- ❖ Driveways, mailboxes, cars
- ❖ Helps rutting issues
- ❖ Parked cars (no off-street parking)
- ❖ Communication
- ❖ Costs \$43,000/day
- ❖ Public's preference
- ❖ 5 Days to get through all areas
- ❖ Rotate areas 1-6



SPECIAL FOCUS AREAS

- ❖ SMD 1
- ❖ School zones
- ❖ Zimmerman Trail
- ❖ Inner Belt Loop
- ❖ Protected Bike lanes & Downtown 2-way conversion
- ❖ Crosswalks with center Islands
- ❖ Multi-Use Trails
- ❖ Drifting areas
- ❖ Hills
 - ❖ North of Rimrock
 - ❖ Rehberg Ranch
 - ❖ Briarwood/Cedar Park
- ❖ Plow routes, Plow maps, Sander maps, Blvd / curb walks



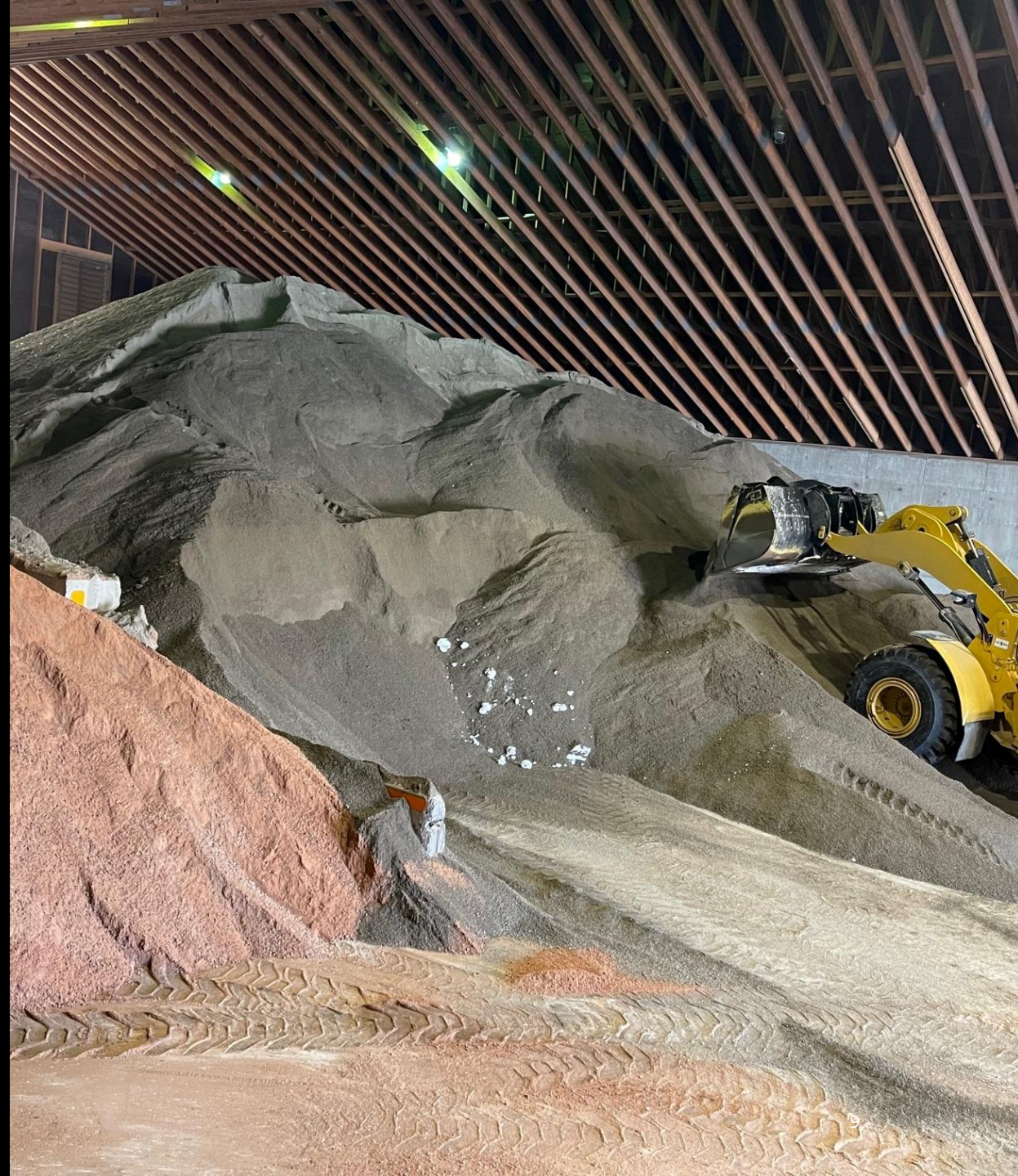


IN THE STORM

- ❖ **Decisions during the storm**
 - ❖ Material to use
 - ❖ Plowing / Product
- ❖ **Full plow mode**
 - ❖ Bringing in other divisions
- ❖ **Plowing residential due to drifting**
- ❖ **Activate residential plowing**
 - ❖ Accumulation / weather / snow type
 - ❖ Populate map on City website/link on FB
 - ❖ Funding \$43,000 / day
- ❖ **Maintenance**
 - ❖ Cutting edges/freezing equipment/break downs
 - ❖ Hit signs / lights / normal calls
- ❖ **Material order**

AFTER THE STORM

- ❖ Picking up the stacks
- ❖ Hauling snow to Airport & Wilson Park
- ❖ Continuous sanding at controlled intersections
- ❖ Hauling Cul-de-Sacs
- ❖ Another storm
 - ❖ Switch back to plow/sand mode
 - ❖ 3-4 hours to get everything switched over
- ❖ Melting snow
 - ❖ Frozen inlets / Ice on roads





THANK YOU | Q&A

Derick Miller
S-T Superintendent

Follow us on  | [BillingsMTPublicWorks.gov](https://www.BillingsMTPublicWorks.gov)



Billings
PUBLIC
WORKS