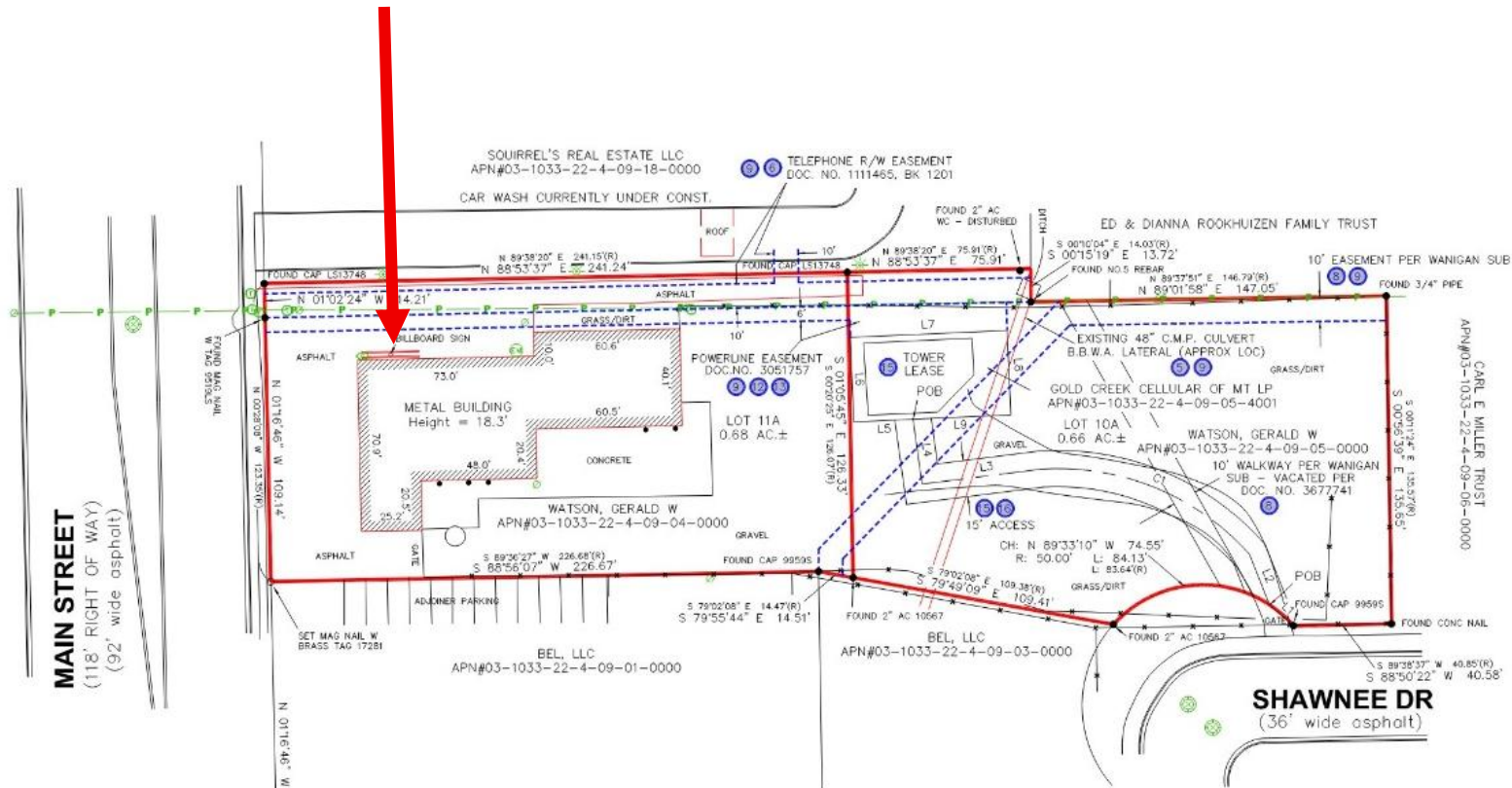


# Attachments for Variance 1394

Proposed sign location.



## 12 PARKING INFO

No Designated Parking Sp

## 10 BASIS OF BEA

Bearings are based on the Mor Plane Coordinate System, NAD 2500 as obtained from GPS w/ solution.

## Key to

- 1
- 2
- 3
- 4
- 5
- 6
- 7
- 8
- 9

LINE	BEARING	DISTANCE	BEARING (R)	DISTANCE (R)
L1	N 49°15'09" W	13.16'	N 49°11'43" W	13.16'
L2	N 21°36'26" W	22.63'	N 21°33'00" W	22.63'
L3	S 82°50'48" W	49.75'	S 82°54'12" W	49.75'
L4	N 07°59'20" W	27.04'	N 07°55'54" W	27.04'
L5	S 87°27'21" W	24.47'	S 87°30'47" W	24.47'
L6	N 02°32'59" W	35.00'	N 02°29'13" W	35.00'
L7	N 87°27'21" E	65.00'	N 87°30'47" E	65.00'
L8	S 02°32'59" E	35.00'	S 02°29'13" E	35.00'
L9	S 87°27'21" W	40.53'	S 87°30'47" W	40.53'

CURVE	RADIUS	ARC LENGTH	CHORD LENGTH	CHORD BEARING	DELTA ANGLE
C1	106.33'	96.23'	92.98'	N 67°46'06" W	51°51'14"
			92.98' (R)	N 67°42'40" W (R)	

Attachments for Variance 1394

