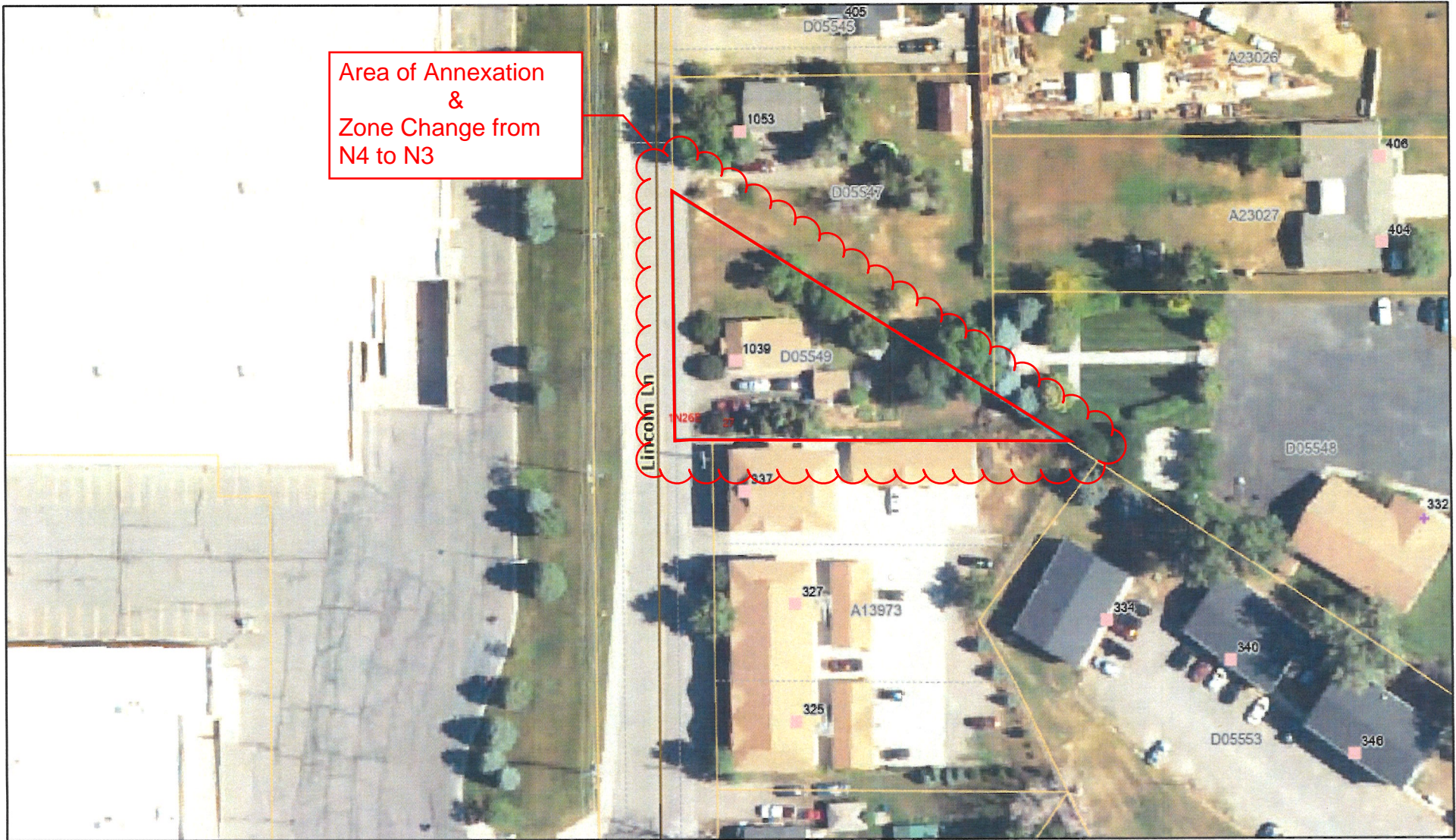


Yellowstone County

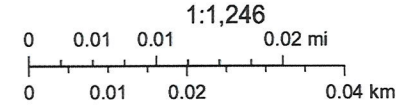


Area of Annexation
&
Zone Change from
N4 to N3

2/9/2026, 9:40:02 AM

- | | | |
|--------------|---------------------|------------------|
| CountyBorder | Local/Private Roads | Address - city |
| Township | Local Street or Rd | 1- Residence |
| Sections | TaxParcel | 6 - Church |
| | Legal Parcel | Road information |

- | | |
|-----------------|---------------|
| Fire_Union | NAIP2025.sid |
| Elections_Union | Red: Band_1 |
| School union | Green: Band_2 |
| | Blue: Band_3 |



Esri Community Maps Contributors, Montana State University, Montana State Library, © OpenStreetMap, Microsoft, Esri, TomTom, Garmin, SafeGraph, GeoTechnologies, Inc, METI/NASA, USGS, Bureau of Land Management, EPA, NPS, US Census Bureau, USDA, USFSWS

ZONING REQUEST

*Amendment
26-05*

MPO
[Detailed zoning request text]



ZONE
CHANGE
1081
SPECIAL
REVIEW

VARIANCE





A two-story yellow house with a grey roof, a chimney, and several windows. A silver SUV is parked in front of the house.

A red van parked on the grass in front of a wooden fence.

The rear portion of a red pickup truck, showing the tailgate and a license plate.

A large, circular tree stump in the middle of the lawn.

A smaller tree stump with three smooth, rounded stones placed on a concrete base next to it.

A small yellow flag or marker stuck in the grass.



