

# 100% CD DRAWINGS FOR CITY OF BILLINGS AVIATION AND TRANSIT DEPARTMENT BILLINGS LOGAN INTERNATIONAL AIRPORT

AIP 3-30-0008-092-2026  
POND "E" EXPANSION  
MARCH 2026

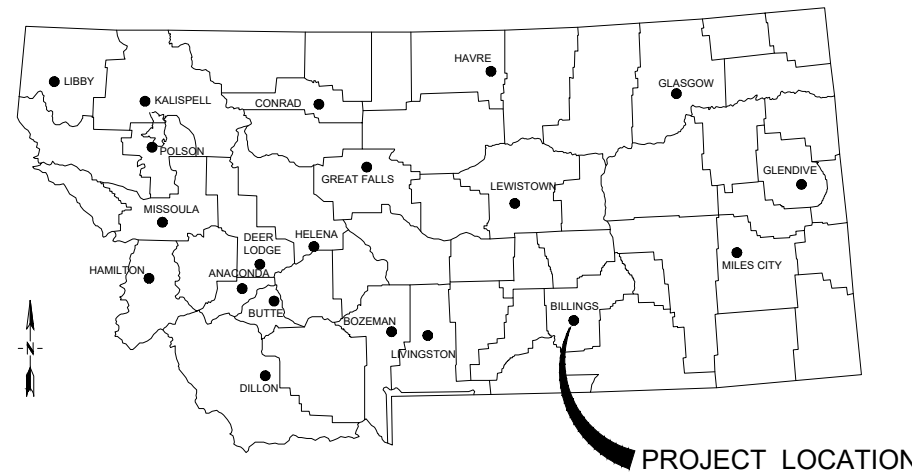


PREPARED BY:



engineers ■ surveyors ■ planners ■ scientists

315 N. 25th Street, Suite 102, Billings, MT 59101  
Phone: 406.656.6000 | Fax: 406.237.1201



**LOCATION MAP**  
NO SCALE



**VICINITY MAP**  
NO SCALE

© This document was prepared by Morrison-Maierle, Inc. and may contain confidential or privileged information. Morrison-Maierle, Inc. retains all common law, statutory, and reserved rights including the copyright thereto. Unauthorized use of this document is strictly prohibited and may be unlawful.



APPROVED BY:



HEATHER E. MOSSER, P.E.  
Project Manager

**100% CD**  
MARCH 2026

SET NO. \_\_\_\_\_

MMI PROJECT NO. 2447.150.26



**LEGEND**



WORK AREA



HAUL ROUTE

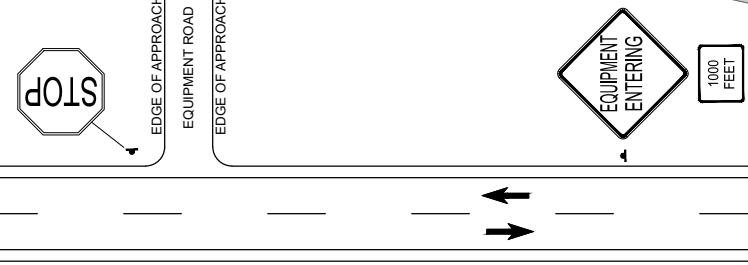
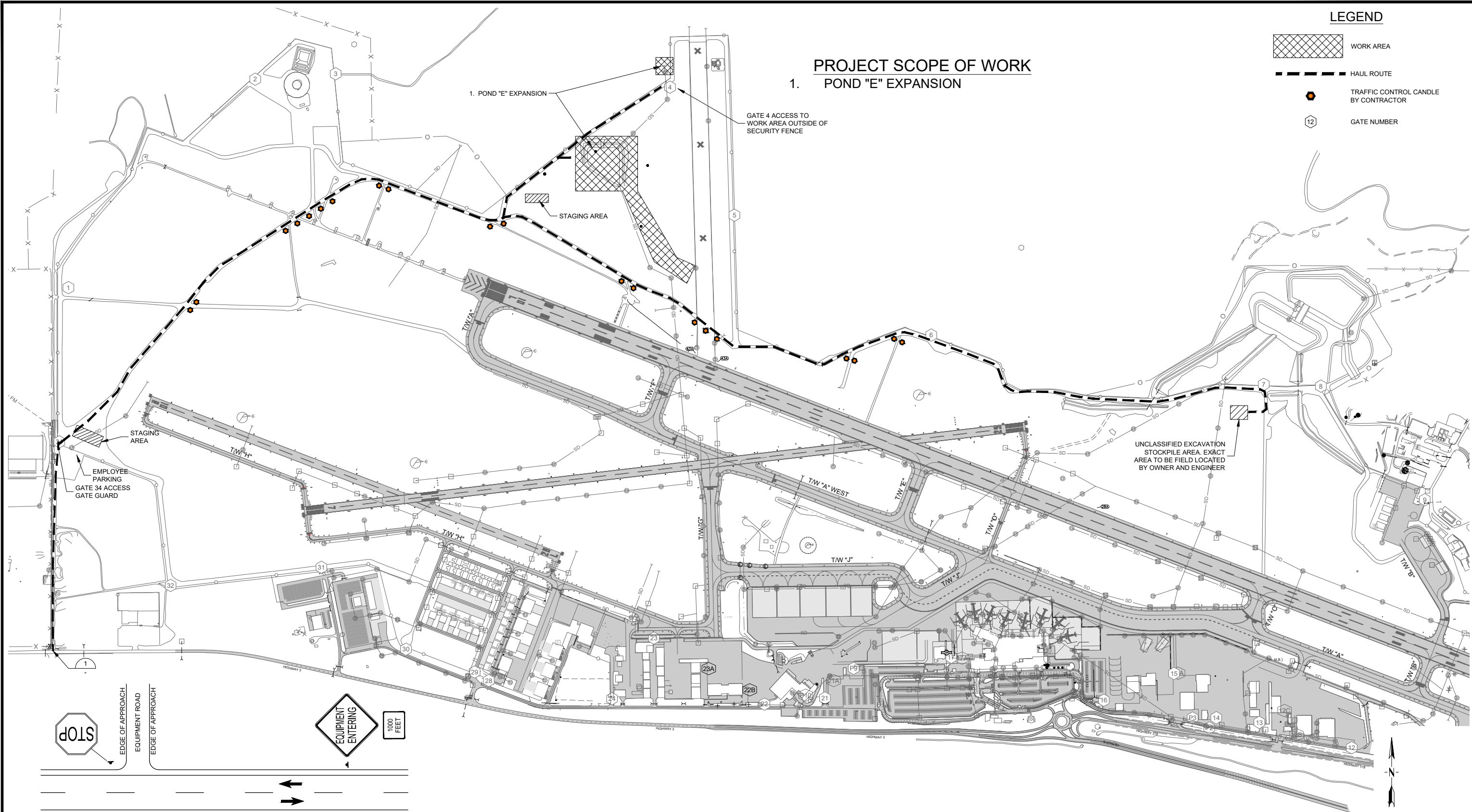


TRAFFIC CONTROL CANDLE BY CONTRACTOR



GATE NUMBER

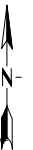
**PROJECT SCOPE OF WORK**  
1. POND "E" EXPANSION



NOTE:  
SET UP THIS SIGN LAYOUT IN EACH  
TRAFFIC DIRECTION, AS NEEDED.

1000'

**1** TYPICAL ACCESS SIGNING DETAIL  
NOT TO SCALE



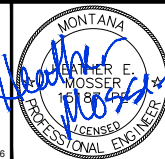
P:\2447-BL150-26 - POND E\ACAD\SHSHEET\CBPP-1.DWG

VERIFY SCALE!  
THESE PRINTS MAY BE REDUCED.  
LINE BELOW MEASURES ONE INCH  
ON ORIGINAL DRAWING.  
MODIFY SCALE ACCORDINGLY!

REVISIONS		BY	DATE
NO.	DESCRIPTION		



**Morrison Maierle**  
engineers • surveyors • planners • scientists  
315 North 29th Street, Suite 102, Billings, MT 59101  
406.656.6000 • www.m-m.net  
COPYRIGHT © MORRISON-MAIERLE, 2026






DRAWN BY: KDK  
DSGN. BY: DCM  
APPR. BY: HEM  
DATE: 03/2026  
Q.C. REVIEW BY:  
DATE: 03/2026

BILLINGS LOGAN INTERNATIONAL AIRPORT  
POND "E" EXPANSION  
AIP 3-30-0008-092-2026  
MONTANA  
CONSTRUCTION SAFETY AND PHASING PLAN

**100% CD**  
MARCH 2026  
PROJECT NUMBER 2447.150.26  
SHEET NUMBER 3  
DRAWING NUMBER CP-1



**LEGEND**

-  WORK AREA
-  HAUL ROUTE
-  GATE NUMBER

**GENERAL NOTES**

1. LOCATION OF EXISTING UTILITIES SHOWN ON THESE DRAWINGS ARE APPROXIMATE AND WERE TAKEN FROM THE BEST AVAILABLE RECORDS. PRIOR TO EXCAVATION THE CONTRACTOR SHALL FIELD VERIFY EXACT LOCATION OF ALL UTILITIES WHETHER OR NOT SHOWN ON THESE DRAWINGS. CONTRACTOR SHALL PROTECT ALL UTILITIES DURING CONSTRUCTION. THE CONTRACTOR SHALL SUPPORT OR TUNNEL UNDER EXISTING UTILITIES IN A MANNER THAT THE EXISTING UTILITIES ARE NOT DAMAGED OR DISTURBED. UNLESS OTHERWISE NOTED, ANY DISTURBANCE OR REPLACEMENT OF EXISTING UTILITIES SHALL BE INCIDENTAL TO THE PROJECT. IF REQUIRED, CONTRACTOR SHALL COORDINATE RELOCATION OF UTILITY WITH THE UTILITY OWNER. ALL UTILITIES ARE TO BE ADJUSTED AND/OR RELOCATED BY THE RESPECTIVE UTILITY COMPANIES UNLESS OTHERWISE INDICATED IN THESE DRAWINGS.
2. PRIOR TO BEGINNING OF CONSTRUCTION AND AFTER INSTALLATION, CONTRACTOR SHALL PLACE TEMPORARY EROSION CONTROL AT ALL PIPE AND MANHOLE INLETS THAT WILL BE AFFECTED BY THE CONSTRUCTION WORK AREA. GENERAL CONTRACTOR SHALL PROVIDE TEMPORARY CONSTRUCTION BEST MANAGEMENT PRACTICES (BMP) CHAPTER 6, BMP SELECTION AND IMPLEMENTATION, OF THE STORMWATER MANAGEMENT MANUAL FOR BILLINGS, MONTANA, MAY 2015. TEMPORARY BMP UNTIL VEGETATION IS ESTABLISHED AND PERMANENT BMP FUNCTIONAL.
3. CONTRACTOR TO MAINTAIN PERIMETER SECURITY TO THE AIRFIELD AT ALL TIMES. WHEN CONTRACTOR USES GATE 4 TO ACCESS WORK AREA OUTSIDE OF SECURITY FENCE, THE GATE MUST BE LOCKED OR OCCUPIED BY GATE GUARD OF BADGED EMPLOYEE AT ALL TIMES.
4. THE AIRPORT IS HOSTING AN AIRSHOW AUGUST 17-24. AIRPORT AND AIRSHOW PERSONNEL WILL USE THIS AREA FOR TRAVELING THROUGH THE AIRFIELD. WORK SHALL BE SUSPENDED AUGUST 20-23. DURING THE SUSPENDED WORK TIME, THE STAGING AREA SHOWN ON THIS DRAWING IS THE ONLY ACCEPTABLE STAGING AREA. EQUIPMENT, MATERIAL, VEHICLES OR ANYTHING CONSTRUCTION RELATED SHALL NOT USE THE STAGING AREA NEAR GATE 34.

P:\2447-BL1150-26 - POND E\ACAD\SHHEET\CBPP-2.DWG  
PLOTTED BY: KENT KUEHN ON Mar/18/2026

VERIFY SCALE!		REVISIONS	
NO.	DESCRIPTION	BY	DATE

THESE PRINTS MAY BE REDUCED. LINE BELOW MEASURES ONE INCH ON ORIGINAL DRAWING.  
MODIFY SCALE ACCORDINGLY!

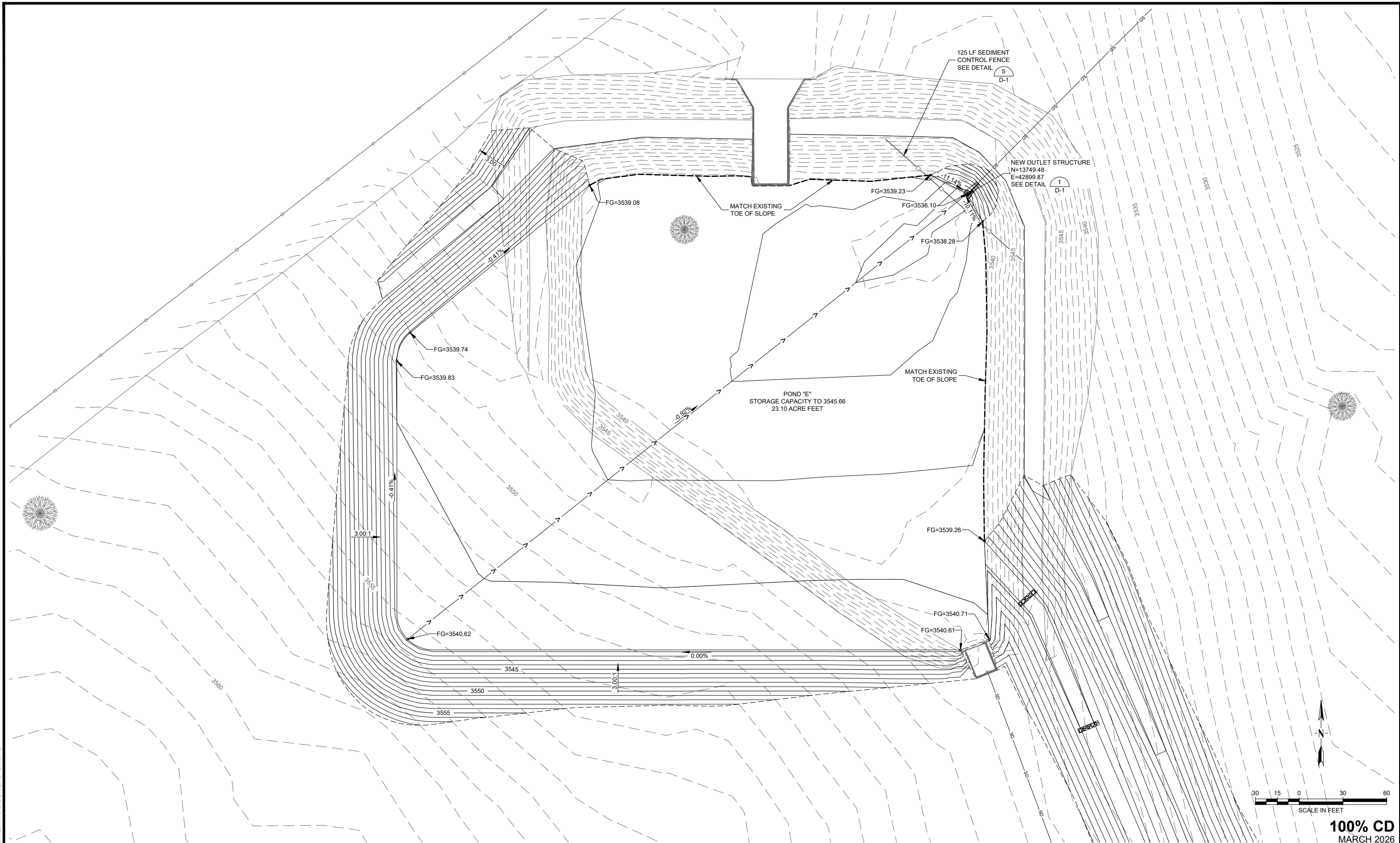


**Morrison Maierle**  
engineers • surveyors • planners • scientists  
315 North 29th Street, Suite 102, Billings, MT 59101  
406.656.6000 • www.m-m.net  
COPYRIGHT © MORRISON-MAIERLE, 2026



DRAWN BY: KDK  
DSGN. BY: DCM  
APPR. BY: HEM  
DATE: 03/2026  
Q.C. REVIEW BY: CBK  
DATE: 03/2026

BILLINGS	BILLINGS LOGAN INTERNATIONAL AIRPORT POND "E" EXPANSION AIP 3-30-0008-092-2026	PROJECT NUMBER 2447.150.26
	MONTANA	SHEET NUMBER 4
CONSTRUCTION SAFETY AND PHASING PLAN		DRAWING NUMBER CP-2



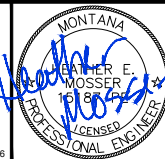
P:\2447-BLL150-26 - POND E\ACAD\SHSHEET\BOND-E\GRADING-PLAN.DWG

VERIFY SCALE!  
 THESE PRINTS MAY BE REDUCED.  
 LINE BELOW MEASURES ONE INCH  
 ON ORIGINAL DRAWING.  
 ───────────  
 MODIFY SCALE ACCORDINGLY!

		REVISIONS			
NO.	DESCRIPTION	BY	DATE		



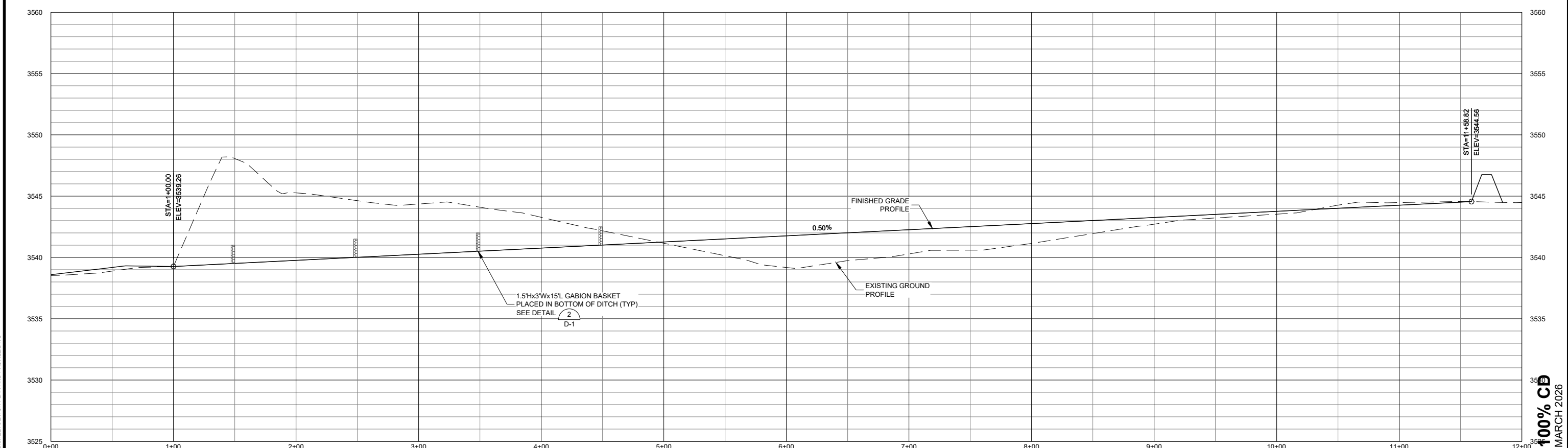
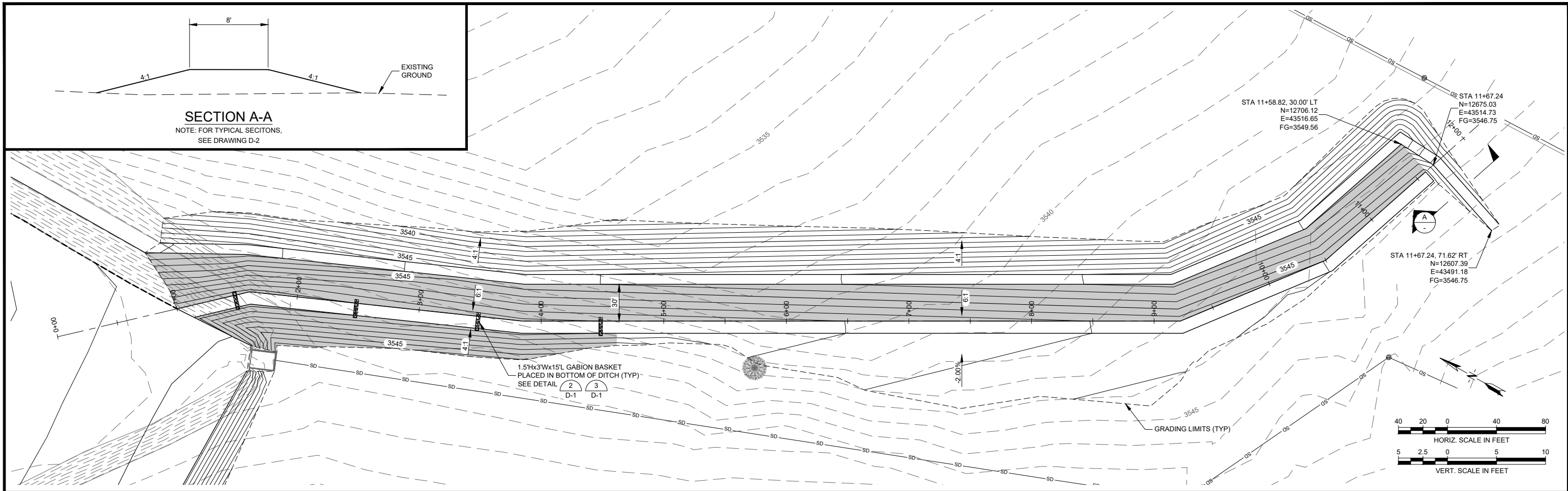
**Morrison  
Maierle**  
 engineers • surveyors • planners • scientists  
 315 North 29th Street, Suite 102, Billings, MT 59101  
 406.656.6000 • www.m-m.net  
 COPYRIGHT © MORRISON-MAIERLE, 2026



DRAWN BY: KDK  
 DSGN. BY: DCM  
 APPR. BY: HEM  
 DATE: 03/2026  
 Q.C. REVIEW  
 BY: CBK  
 DATE: 03/2026

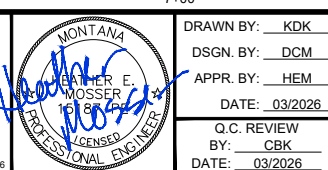
BILLINGS LOGAN INTERNATIONAL AIRPORT  
 POND "E" EXPANSION  
 AIP 3-30-0008-092-2026  
 BILLINGS MONTANA  
 POND E GRADING PLAN

100% CD  
 MARCH 2026  
 PROJECT NUMBER 2447.150.26  
 SHEET NUMBER 5  
 DRAWING NUMBER C-1



VERIFY SCALE!  
THESE PRINTS MAY BE REDUCED.  
LINE BELOW MEASURES ONE INCH  
ON ORIGINAL DRAWING.  
MODIFY SCALE ACCORDINGLY!

NO.	DESCRIPTION	BY	DATE

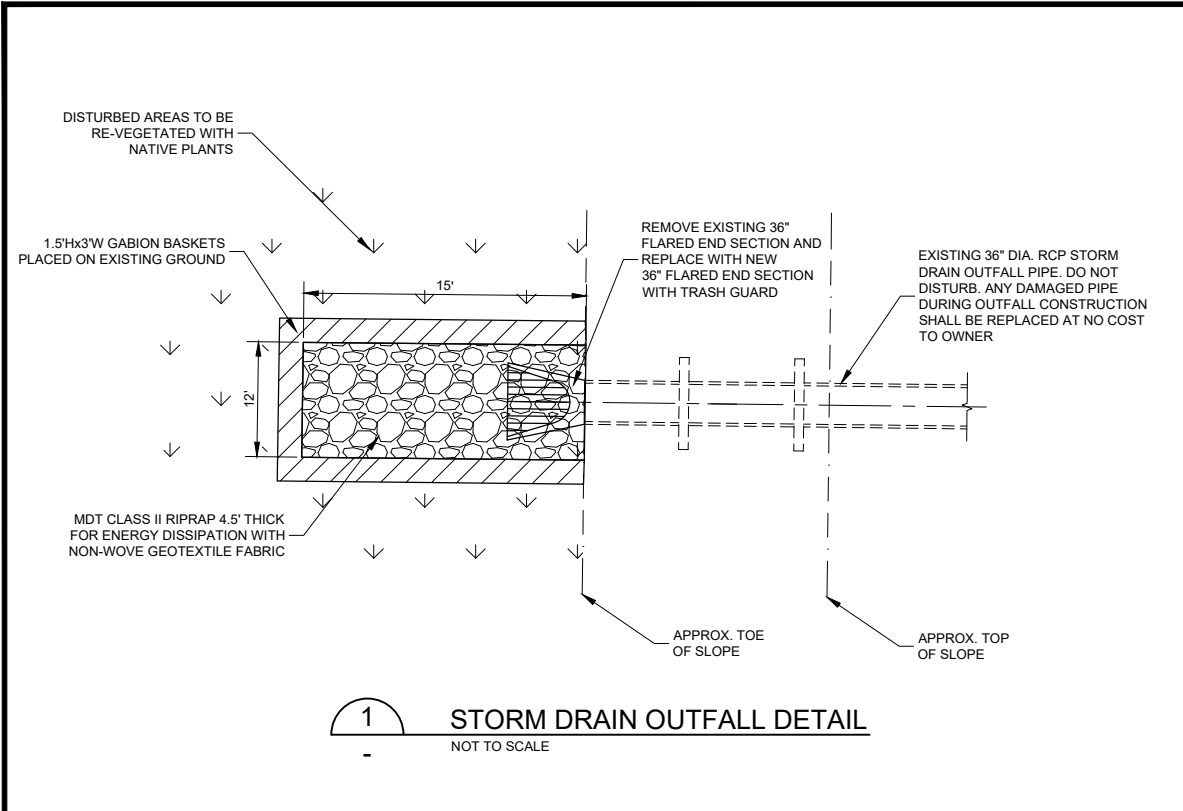


DRAWN BY: KDK DSGN. BY: DCM APPR. BY: HEM DATE: 03/2026	BILLINGS LOGAN INTERNATIONAL AIRPORT POND "E" EXPANSION AIP 3-30-0008-092-2026	PROJECT NUMBER 2447.150.26
Q.C. REVIEW BY: CBK DATE: 03/2026	BILLINGS	SHEET NUMBER 6
CHANNEL DITCH PLAN AND PROFILE		DRAWING NUMBER C-2

P:\2447-BLL150-26 - POND/EACAD/SHEET/DITCH PLAN AND PROFILE.DWG

100% CB  
MARCH 2026

PLOTTED BY: KENT KUEHN ON Mar/18/2026

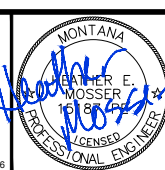


VERIFY SCALE!  
THESE PRINTS MAY BE REDUCED.  
LINE BELOW MEASURES ONE INCH  
ON ORIGINAL DRAWING.  
MODIFY SCALE ACCORDINGLY!

REVISIONS			
NO.	DESCRIPTION	BY	DATE



**Morrison  
Maierle**  
engineers • surveyors • planners • scientists  
315 North 29th Street, Suite 102, Billings, MT 59101  
406.656.6000 www.m-m.net  
COPYRIGHT © MORRISON-MAIERLE, 2026



DRAWN BY: KDK  
DSGN. BY: DCM  
APPR. BY: HEM  
DATE: 03/2026  
Q.C. REVIEW  
BY: CBK  
DATE: 03/2026

BILLINGS LOGAN INTERNATIONAL AIRPORT  
POND "E" EXPANSION  
AIP 3-30-0008-092-2026  
MONTANA  
POND E OUTFALL PLAN

100% CD  
MARCH 2026  
PROJECT NUMBER  
2447.150.26  
SHEET NUMBER  
7  
DRAWING NUMBER  
C-3

P:\2447-BL\150-26-POND E\ACAD\SHSHEET\OUTFALL PLAN.DWG  
PLOTTED BY: KENT KUEHN ON Mar/18/2026



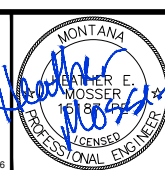
100% CD  
MARCH 2026

REVISIONS			
NO.	DESCRIPTION	BY	DATE

VERIFY SCALE!  
THESE PRINTS MAY BE REDUCED.  
LINE BELOW MEASURES ONE INCH  
ON ORIGINAL DRAWING.  
MODIFY SCALE ACCORDINGLY!



**Morrison  
Maierle**  
engineers • surveyors • planners • scientists  
315 North 29th Street, Suite 102, Billings, MT 59101  
406.656.6000 • www.m-m.net  
COPYRIGHT © MORRISON-MAIERLE, 2026



DRAWN BY: KDK  
DSGN. BY: DCM  
APPR. BY: HEM  
DATE: 03/2026  
Q.C. REVIEW  
BY: CBK  
DATE: 03/2026

BILLINGS LOGAN INTERNATIONAL AIRPORT  
POND "E" EXPANSION  
AIP 3-30-0008-092-2026  
MONTANA  
BORE HOLE LOCATION PLAN

PROJECT NUMBER  
2447.150.26  
SHEET NUMBER  
8  
DRAWING NUMBER  
C-3

P:\2447-BLL150-26 - POND/E/ACAD/SHEET/GEOTECH PLAN.DWG  
PLOTTED BY: KENT KUEHN ON Mar/18/2026

**KEY TO SYMBOLS**

CLIENT Morrison-Maierle PROJECT NAME BLIA Pond E  
PROJECT NUMBER G25184 PROJECT LOCATION Billings, MT

- LITHOLOGIC SYMBOLS**  
(Unified Soil Classification System)
- CL-ML: USCS Low Plasticity Silty Clay
  - SANDSTONE: Sandstone
  - SM: USCS Silty Sand
  - TOPSOIL: Topsoil

- SAMPLER SYMBOLS**
- Standard Penetration Test

**WELL CONSTRUCTION SYMBOLS**

- ABBREVIATIONS**
- LL - LIQUID LIMIT (%)
  - PI - PLASTIC INDEX (%)
  - W - MOISTURE CONTENT (%)
  - DD - DRY DENSITY (PCF)
  - NP - NON PLASTIC
  - 200 - PERCENT PASSING NO. 200 SIEVE
  - PP - POCKET PENETROMETER (TSF)
  - TV - TORVANE
  - PIJ - PHOTOIONIZATION DETECTOR
  - UC - UNCONFINED COMPRESSION
  - ppm - PARTS PER MILLION
  - Water Level at Time Drilling, or as Shown
  - Water Level at End of Drilling, or as Shown
  - Water Level After 24 Hours, or as Shown

**BORING NUMBER B-1**  
PAGE 1 OF 1

CLIENT Morrison-Maierle PROJECT NAME BLIA Pond E  
PROJECT NUMBER G25184 PROJECT LOCATION Billings, MT  
DATE STARTED 11/24/25 COMPLETED 11/24/25 GROUND ELEVATION 3548.6 ft HOLE SIZE 5 inches  
DRILLING CONTRACTOR Rimrock Engineering, Inc. GROUND WATER LEVELS:  
DRILLING METHOD Solid Stem Auger AT TIME OF DRILLING ---  
LOGGED BY G.J. CHECKED BY M.G. AT END OF DRILLING ---  
NOTES AFTER DRILLING ---

DEPTH (ft)	GRAPHIC LOG	MATERIAL DESCRIPTION	SAMPLE TYPE NUMBER	RECOVERY % (ROD)	BLOW COUNTS (N VALUE)	POCKET PEN. (tsf)	DRY UNIT WT. (pcf)	MOISTURE CONTENT (%)	LIQUID LIMIT	PLASTIC LIMIT	PLASTICITY INDEX	FINES CONTENT (%)	ATTERBERG LIMITS
0		TOPSOIL											
0-3		(CL-ML) SANDY SILTY CLAY Yellowish brown, stiff, low plasticity, fine sand.	SPT	100	9-8-6 (14)				2	24	17	7	55
5		(SM) SILTY SAND Yellowish brown, medium dense, fine sand.	SPT	100	14-20-27 (47)				6				
8.8		SANDSTONE Yellowish brown, weathered, cemented, fine grained to very fine grained sand.	SPT	100	50/4"				7				

Bottom of borehole at 8.8 feet.

**BORING NUMBER B-2**  
PAGE 1 OF 1

CLIENT Morrison-Maierle PROJECT NAME BLIA Pond E  
PROJECT NUMBER G25184 PROJECT LOCATION Billings, MT  
DATE STARTED 11/24/25 COMPLETED 11/24/25 GROUND ELEVATION 3559.28 ft HOLE SIZE 5 inches  
DRILLING CONTRACTOR Rimrock Engineering, Inc. GROUND WATER LEVELS:  
DRILLING METHOD Solid Stem Auger AT TIME OF DRILLING ---  
LOGGED BY G.J. CHECKED BY M.G. AT END OF DRILLING ---  
NOTES AFTER DRILLING ---

DEPTH (ft)	GRAPHIC LOG	MATERIAL DESCRIPTION	SAMPLE TYPE NUMBER	RECOVERY % (ROD)	BLOW COUNTS (N VALUE)	POCKET PEN. (tsf)	DRY UNIT WT. (pcf)	MOISTURE CONTENT (%)	LIQUID LIMIT	PLASTIC LIMIT	PLASTICITY INDEX	FINES CONTENT (%)	ATTERBERG LIMITS
0		TOPSOIL											
0-5		(SM) SILTY SAND Yellowish brown, medium dense, fine sand.	SPT	100	4-6-9 (15)				4	NP	NP	NP	28
5		(SM) SILTY SAND Yellowish brown, medium dense, fine sand.	SPT	100	8-12-13 (25)				6				
9.8		SANDSTONE Yellowish brown, weathered, cemented, fine grained to very fine grained sand.	SPT	100	50/4"				6				

Bottom of borehole at 9.8 feet.

**BORING NUMBER B-3**  
PAGE 1 OF 1

CLIENT Morrison-Maierle PROJECT NAME BLIA Pond E  
PROJECT NUMBER G25184 PROJECT LOCATION Billings, MT  
DATE STARTED 11/24/25 COMPLETED 11/24/25 GROUND ELEVATION 3550.82 ft HOLE SIZE 5 inches  
DRILLING CONTRACTOR Rimrock Engineering, Inc. GROUND WATER LEVELS:  
DRILLING METHOD Solid Stem Auger AT TIME OF DRILLING ---  
LOGGED BY G.J. CHECKED BY M.G. AT END OF DRILLING ---  
NOTES AFTER DRILLING ---

DEPTH (ft)	GRAPHIC LOG	MATERIAL DESCRIPTION	SAMPLE TYPE NUMBER	RECOVERY % (ROD)	BLOW COUNTS (N VALUE)	POCKET PEN. (tsf)	DRY UNIT WT. (pcf)	MOISTURE CONTENT (%)	LIQUID LIMIT	PLASTIC LIMIT	PLASTICITY INDEX	FINES CONTENT (%)	ATTERBERG LIMITS
0		TOPSOIL											
0-5		(SM) SILTY SAND Yellowish brown, medium dense, fine sand, some sandstone fragments.	SPT	100	12-30-40 (70)				6	NP	NP	NP	25
5		SANDSTONE Yellowish brown, weathered, cemented, fine grained to very fine grained sand.	SPT	100	38-50/3"				9				

Bottom of borehole at 5.3 feet.

**BORING NUMBER B-4**  
PAGE 1 OF 1

CLIENT Morrison-Maierle PROJECT NAME BLIA Pond E  
PROJECT NUMBER G25184 PROJECT LOCATION Billings, MT  
DATE STARTED 11/24/25 COMPLETED 11/24/25 GROUND ELEVATION 3528.72 ft HOLE SIZE 5 inches  
DRILLING CONTRACTOR Rimrock Engineering, Inc. GROUND WATER LEVELS:  
DRILLING METHOD Solid Stem Auger AT TIME OF DRILLING ---  
LOGGED BY G.J. CHECKED BY M.G. AT END OF DRILLING ---  
NOTES AFTER DRILLING ---

DEPTH (ft)	GRAPHIC LOG	MATERIAL DESCRIPTION	SAMPLE TYPE NUMBER	RECOVERY % (ROD)	BLOW COUNTS (N VALUE)	POCKET PEN. (tsf)	DRY UNIT WT. (pcf)	MOISTURE CONTENT (%)	LIQUID LIMIT	PLASTIC LIMIT	PLASTICITY INDEX	FINES CONTENT (%)	ATTERBERG LIMITS
0		TOPSOIL											
1.1		SANDSTONE Yellowish brown, weathered, cemented, fine grained to very fine grained sand.	SPT	100	50/1"				5				

Bottom of borehole at 1.1 feet.

**BORING NUMBER B-5**  
PAGE 1 OF 1

CLIENT Morrison-Maierle PROJECT NAME BLIA Pond E  
PROJECT NUMBER G25184 PROJECT LOCATION Billings, MT  
DATE STARTED 11/24/25 COMPLETED 11/24/25 GROUND ELEVATION 3537.85 ft HOLE SIZE 5 inches  
DRILLING CONTRACTOR Rimrock Engineering, Inc. GROUND WATER LEVELS:  
DRILLING METHOD Solid Stem Auger AT TIME OF DRILLING ---  
LOGGED BY G.J. CHECKED BY M.G. AT END OF DRILLING ---  
NOTES AFTER DRILLING ---

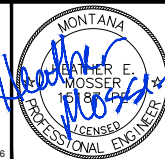
DEPTH (ft)	GRAPHIC LOG	MATERIAL DESCRIPTION	SAMPLE TYPE NUMBER	RECOVERY % (ROD)	BLOW COUNTS (N VALUE)	POCKET PEN. (tsf)	DRY UNIT WT. (pcf)	MOISTURE CONTENT (%)	LIQUID LIMIT	PLASTIC LIMIT	PLASTICITY INDEX	FINES CONTENT (%)	ATTERBERG LIMITS
0		TOPSOIL											
0-2.7		(SM) SILTY SAND Yellowish brown, medium dense, fine sand.	SPT	100	50/2"				10				

Bottom of borehole at 2.7 feet.

P:\2447-BL1\150-26 - POND/E/CAD/SHEET/SGE/TECH PLAN.DWG

VERIFY SCALE!  
THESE PRINTS MAY BE REDUCED.  
LINE BELOW MEASURES ONE INCH  
ON ORIGINAL DRAWING.  
MODIFY SCALE ACCORDINGLY!

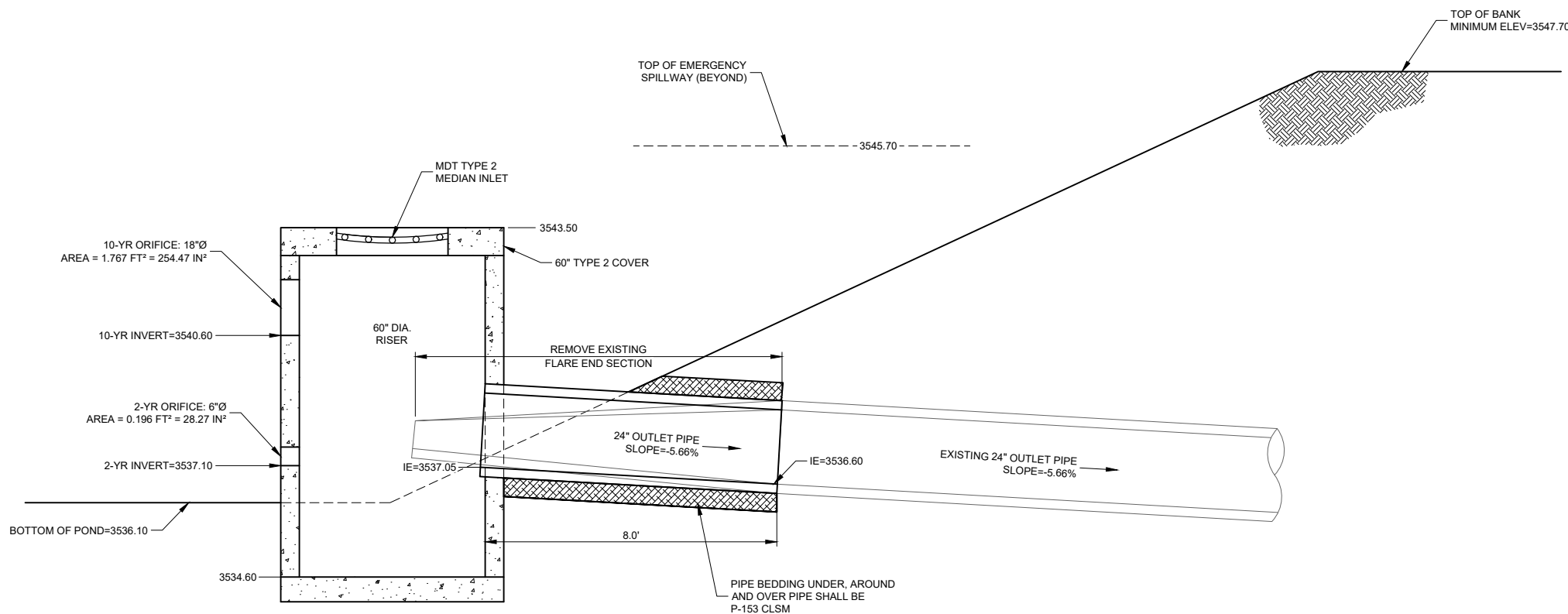
REVISIONS			
NO.	DESCRIPTION	BY	DATE



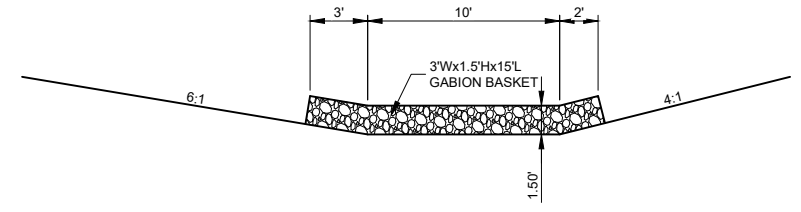
DRAWN BY: KDK  
DSGN. BY: DCM  
APPR. BY: HEM  
DATE: 03/2026  
Q.C. REVIEW BY: CBK  
DATE: 03/2026

BILLINGS LOGAN INTERNATIONAL AIRPORT  
POND "E" EXPANSION  
AIP 3-30-0008-092-2026  
MONTANA  
BORE LOGS

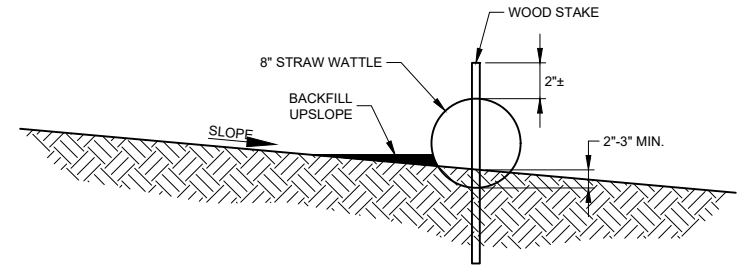
100% CD  
MARCH 2026  
PROJECT NUMBER 2447.150.26  
SHEET NUMBER 9  
DRAWING NUMBER C-4



1 OUTLET STRUCTURE DETAIL  
C-1 SCALE: 1" = 2'

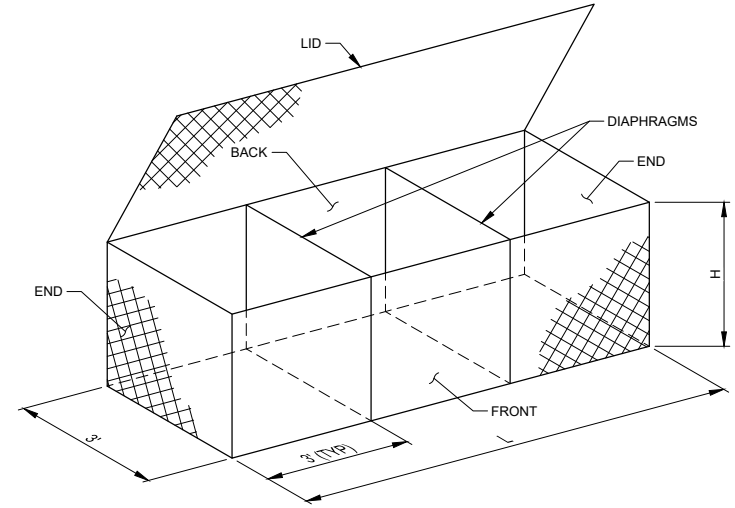


3 GABION BASKET TYPICAL SECTION  
C-2 NOT TO SCALE

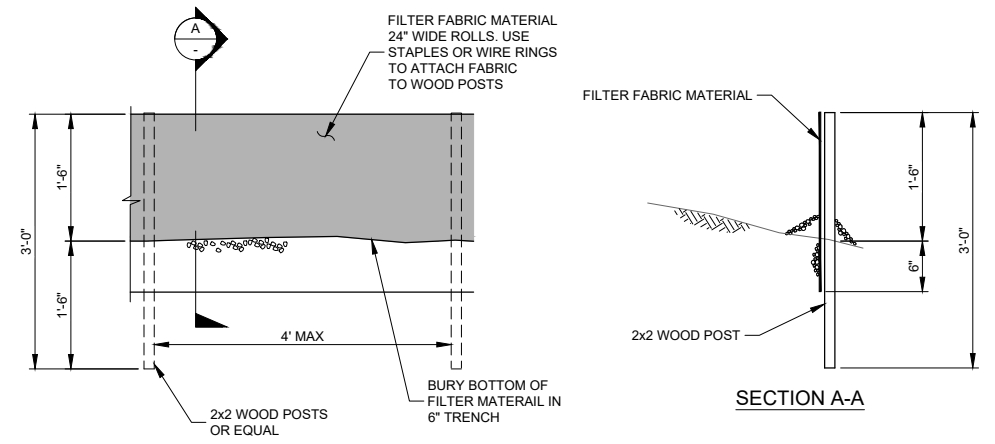


NOTE: PRIOR TO BEGINNING OF CONSTRUCTION AND AFTER INSTALLATION, CONTRACTOR SHALL PLACE TEMPORARY EROSION CONTROL AT ALL PIPE AND MANHOLE INLETS THAT WILL BE AFFECTED BY THE CONSTRUCTION WORK AREA. CONTRACTOR SHALL BE RESPONSIBLE TO USE BEST MANAGEMENT PRACTICE IN PLACING EROSION CONTROL AS CONSTRUCTION ACTIVITIES DICTATE. CONTRACTOR'S LAYOUT SHALL BE APPROVED BY ENGINEER.

4 STRAW WATTLE DETAIL  
C-1 NOT TO SCALE



2 GABION BASKET DETAIL  
C-2 NOT TO SCALE



5 SEDIMENT CONTROL FENCE DETAIL  
C-1 NOT TO SCALE

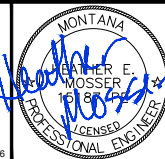
P:\2447-BL1150-26 - POND/E/CAD/SHEET/DETAILS.DWG

VERIFY SCALE!  
THESE PRINTS MAY BE REDUCED.  
LINE BELOW MEASURES ONE INCH  
ON ORIGINAL DRAWING.  
MODIFY SCALE ACCORDINGLY!

REVISIONS			
NO.	DESCRIPTION	BY	DATE



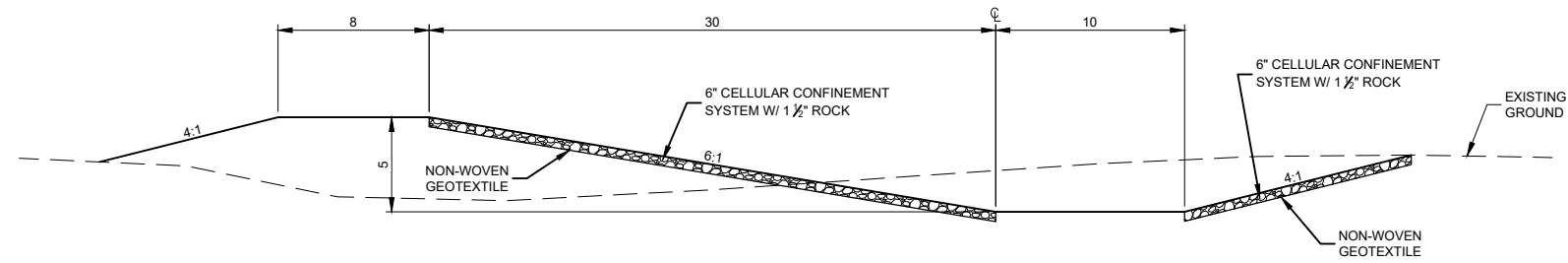
**Morrison Maierle**  
engineers • surveyors • planners • scientists  
315 North 29th Street, Suite 102, Billings, MT 59101  
406.656.6000 • www.m-m.net  
COPYRIGHT © MORRISON-MAIERLE, 2026



DRAWN BY: KDK  
DSGN. BY: DCM  
APPR. BY: HEM  
DATE: 03/2026  
Q.C. REVIEW BY: CBK  
DATE: 03/2026

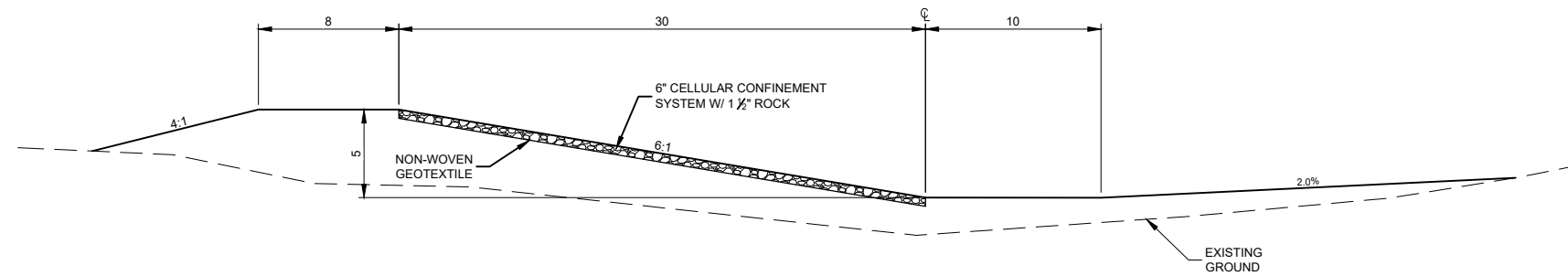
BILLINGS LOGAN INTERNATIONAL AIRPORT  
POND "E" EXPANSION  
AIP 3-30-0008-092-2026  
MONTANA  
DETAILS

**100% CD**  
MARCH 2026  
PROJECT NUMBER 2447.150.26  
SHEET NUMBER 10  
DRAWING NUMBER D-1



**TYPICAL CHANNEL SECTION NO. 1**

STA 1+12.00 TO STA 4+61.36  
 STA 4+61.36 TO STA 5+55.74 TRANSITION TO TYPICAL SECTION NO. 2  
 STA 10+57.13 TO STA 11+58.82



**TYPICAL CHANNEL SECTION NO. 2**

STA 5+55.74 TO STA 9+33.26  
 STA 9+33.26 TO STA 10+57.13 TRANSITION TO TYPICAL SECTION NO. 1

**GENERAL NOTES**

- OWNER WILL PROVIDE 2,091.5 SQ. YDS. OF PRESTO GEOWEB CELLULAR CONFINEMENT MATERIAL. OWNER PROVIDED CELLULAR CONFINEMENT MATERIAL COMES IN 10 CELL X 29 CELL SHEETS AND COMES WITH STAKES AND CLIPS FOR INSTALLATION. NON-WOVEN GEOTEXTILE WILL NOT BE OWNER PROVIDED.

**100% CD**  
 MARCH 2026

P:\2447-BILLING-26-POND/E/CAD/SHEET/DETAILS.DWG

VERIFY SCALE!		REVISIONS		
NO.	DESCRIPTION	BY	DATE	

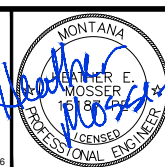
THESE PRINTS MAY BE REDUCED. LINE BELOW MEASURES ONE INCH ON ORIGINAL DRAWING.

MODIFY SCALE ACCORDINGLY!

PLOTTED BY: KENT KUEHN ON Mar/18/2026



**Morrison Maierle**  
 engineers • surveyors • planners • scientists  
 315 North 29th Street, Suite 102, Billings, MT 59101  
 406.656.6000 • www.m-m.net  
 COPYRIGHT © MORRISON-MAIERLE, 2026



DRAWN BY: KDK  
 DSGN. BY: DCM  
 APPR. BY: HEM  
 DATE: 03/2026  
 Q.C. REVIEW BY: CBK  
 DATE: 03/2026

BILLINGS LOGAN INTERNATIONAL AIRPORT  
 POND "E" EXPANSION  
 AIP 3-30-0008-092-2026  
 MONTANA  
 CHANNEL TYPICAL SECTIONS

PROJECT NUMBER 2447.150.26  
 SHEET NUMBER 11  
 DRAWING NUMBER D-2