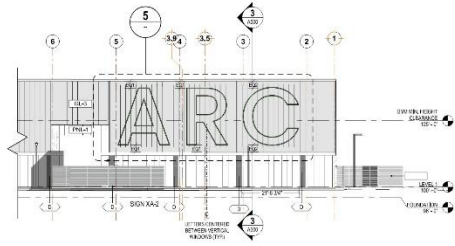
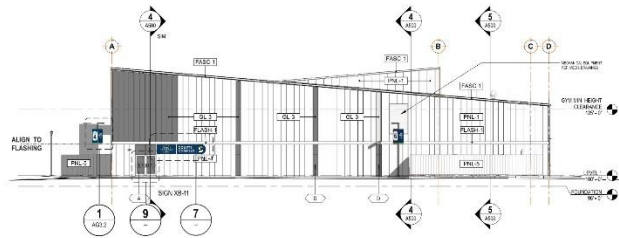


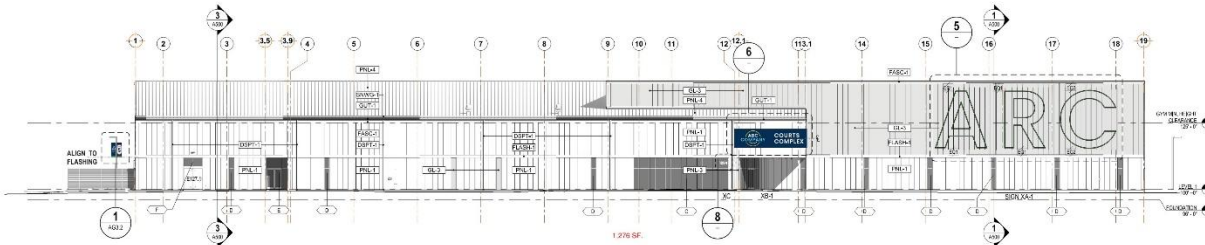
# LAND USE CONTRARY TO ZONING 11- ATTACHMENTS



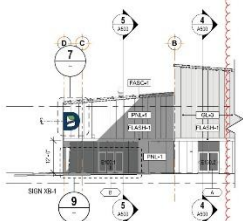
**1 PARTIAL EXTERIOR ELEVATION - NORTH**  
1/8" = 1'-0"



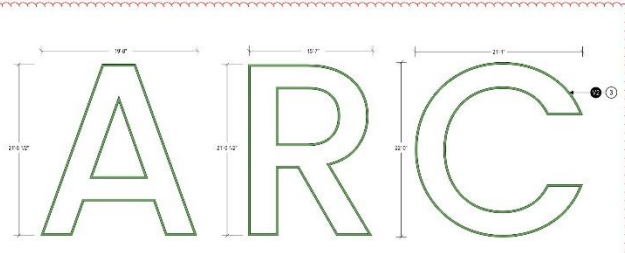
**2 PARTIAL EXTERIOR ELEVATION - NORTH**  
1/8" = 1'-0"



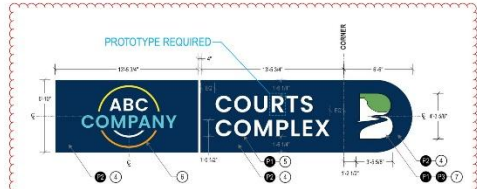
**3 OVERALL EXTERIOR ELEVATION - SOUTH**  
1/8" = 1'-0"



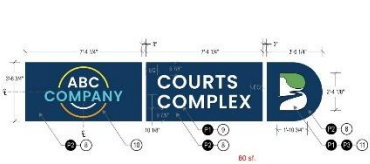
**4 PARTIAL EXTERIOR ELEVATION - EAST**  
1/8" = 1'-0"



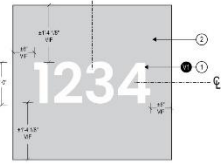
**5 SIGN TYPE XA - PRIMARY PROJECT ID**  
3/8" = 1'-0"  
NOTE: OWNER TO APPROVE FINAL COLOR PRIOR TO FABRICATION



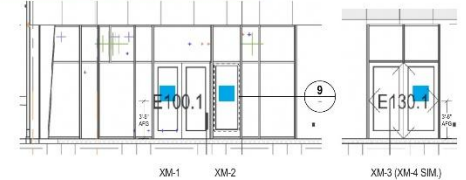
**6 SIGN TYPE XB-1**  
3/8" = 1'-0"  
NOTE: DESIGNER TO PROVIDE FINAL LOGO LAYOUT PRIOR TO FABRICATION



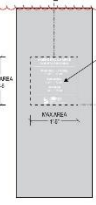
**7 SIGN TYPE XB-11**  
3/8" = 1'-0"  
NOTE: DESIGNER TO PROVIDE FINAL LOGO LAYOUT PRIOR TO FABRICATION



**8 SIGN TYPE XC - ADDRESS NUMERALS**  
1" = 1'-0"  
NOTE: OWNER TO PROVIDE FINAL MESSAGES PRIOR TO FABRICATION



**9 SIGN TYPE XM - EXTERIOR WINDOW VINYL**  
1/4" = 1'-0"



**10 SIGN TYPE XM - DETAIL ELEVATION (TYP)**  
1/4" = 1'-0"  
NOTE: OWNER TO PROVIDE FINAL MESSAGES PRIOR TO FABRICATION

## SIGNAGE GENERAL NOTES

ALL MEASUREMENTS ARE APPROXIMATE. THE FABRICATOR IS RESPONSIBLE FOR FIELD VERIFICATION AND COORDINATION OF ALL LOCATIONS AND FINAL DIMENSIONS. THE FABRICATOR SHALL NOTIFY THE OWNER AND A/E DESIGN OF ANY DISCREPANCIES BETWEEN THE FIELD CONDITIONS AND DRAWINGS, LOCATION PLANS OR MESSAGE SCHEDULE PRIOR TO FABRICATION.

## KEY NOTES

- 1) EXTERIOR GRAPEVINE CLIP CRANIAL VINYL TO MATCH COLOR SHOWN APPLIED TO REAR SURFACE OF SIGNS
- 2) SIGN MOUNT BRACKETS
- 3) USE CUT LIST FOR SIGN MOUNTING VINYL WITH A CORNER RAIL APPLIED TO POLYCARBONATE PANELS. ENSURE NO BUBBLES AND REMOVE SIGN UPON INSTALLATION. VINYL TO MATCH COLOR AS NOTED.
- 4) KEEP FABRICATOR AN ALUMINUM CABINET OF EXTERNAL FRAME STRUCTURE AS NOTED. ATTACHED TO BUILD STRUCTURE USING METAL PANELS. ENSURE ALL PERFORATIONS ARE SEALED AND WEATHER PROTECTED. FACE AND RETURN FINISHED TO MATCH COLOR AS NOTED.
- 5) KEEP ALUMINUM CORNER LETTERS MECHANICALLY FASTENED FLUSH TO PANEL FACE AND RETURN FINISHED TO MATCH COLOR AS NOTED.
- 6) KEEP ALUMINUM CORNER LOGO MECHANICALLY FASTENED FLUSH TO PANEL FACE AND RETURN FINISHED TO MATCH COLOR AS NOTED.
- 7) KEEP FABRICATOR AN ALUMINUM CABINET OF EXTERNAL FRAME STRUCTURE AS NOTED. ATTACHED TO BUILD STRUCTURE USING METAL PANELS. ENSURE ALL PERFORATIONS ARE SEALED AND WEATHER PROTECTED. FACE AND RETURN FINISHED TO MATCH COLOR AS NOTED.
- 8) KEEP ALUMINUM CORNER LETTERS MECHANICALLY FASTENED FLUSH TO PANEL FACE AND RETURN FINISHED TO MATCH COLOR AS NOTED.
- 9) KEEP ALUMINUM CORNER LOGO MECHANICALLY FASTENED FLUSH TO PANEL FACE AND RETURN FINISHED TO MATCH COLOR AS NOTED.
- 10) KEEP ALUMINUM CORNER LETTERS MECHANICALLY FASTENED FLUSH TO PANEL FACE AND RETURN FINISHED TO MATCH COLOR AS NOTED.
- 11) KEEP ALUMINUM CORNER LOGO MECHANICALLY FASTENED FLUSH TO PANEL FACE AND RETURN FINISHED TO MATCH COLOR AS NOTED.

SHEET: EXTERIOR SIGNAGE  
 PROJECT: AMEND PARK RECREATION CAMPUS  
 100% CD PERMIT SET  
 24194.00  
 \$500  
 \$500



DATE: 05-05-2023

AG.3.1