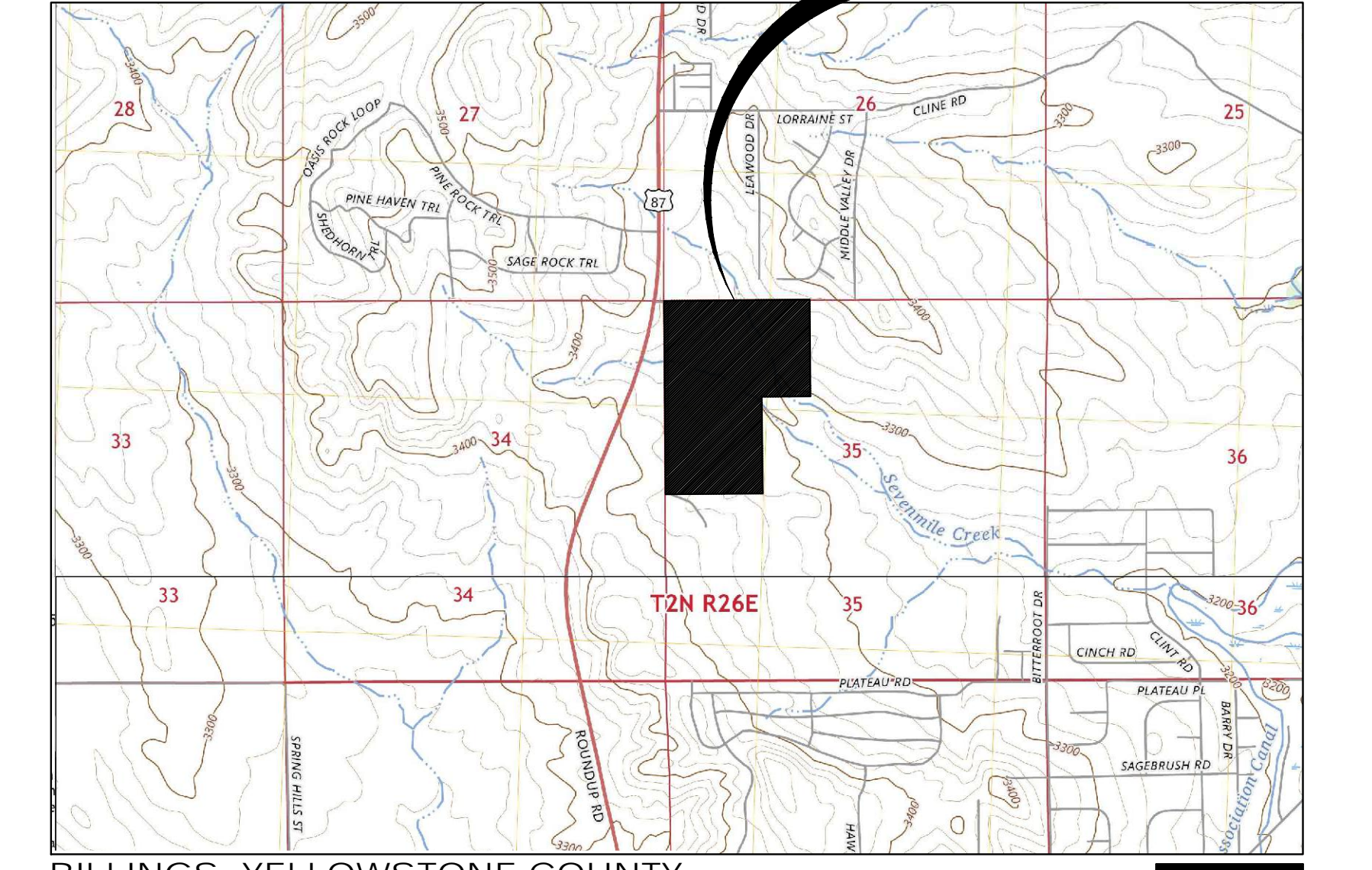


PRELIMINARY PLAT OF PRONGHORN SUBDIVISION

LOCATED IN SECTION 35, TOWNSHIP 2 NORTH, RANGE 26 EAST, P.M.M., YELLOWSTONE COUNTY, MONTANA



VICINITY MAP THIS PROJECT



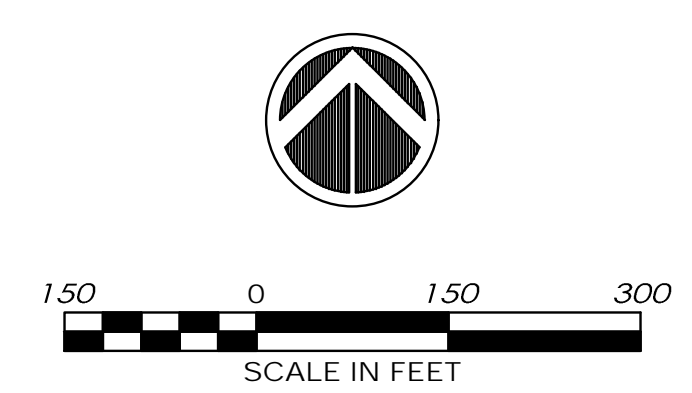
BASIS OF BEARING
STATE PLANE MONTANA - ZONE 2500
GROUND (TRUE) DISTANCES

RECORD OWNER:
AG N KT'S PROPERTIES, L.L.C.

SUBDIVIDER:
AG N KT'S PROPERTIES, L.L.C.

DATE:
APRIL, 2026

TOTAL SUBDIVISION AREA:
100.08 ACRES (GROSS)
66.57 ACRES (NET)

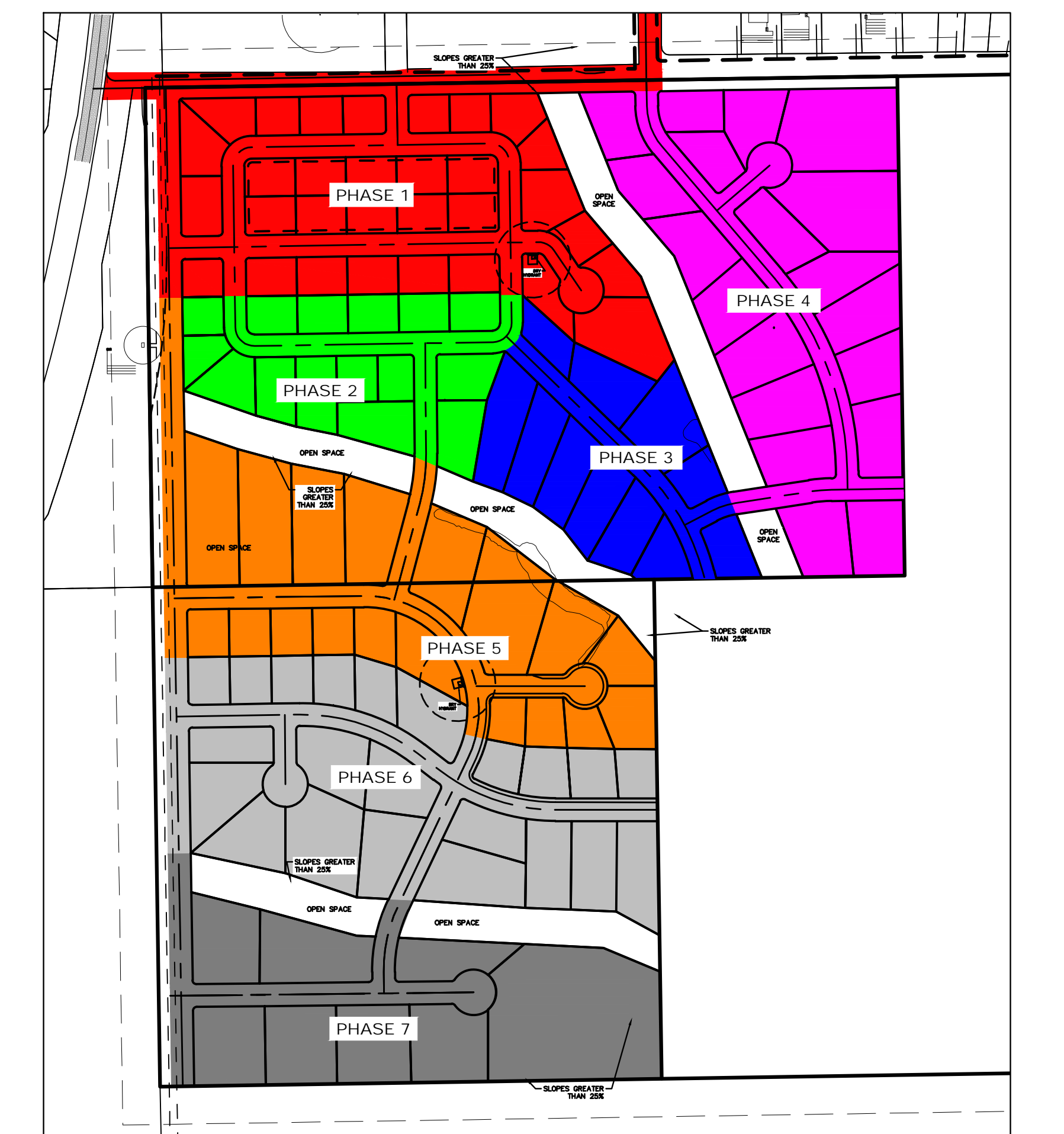


LEGEND

(E) = EXISTING
(P) = PROPOSED
R/W OR R.O.W. = RIGHT-OF-WAY
U.E. = UTILITY EASEMENT
N.A.S. = NO ACCESS STRIP

□ = CISTERN
▭ = DRAINFIELD

SITE DATA	
NUMBER OF LOTS	124
MAXIMUM LOT AREA	3.47 AC
MINIMUM LOT AREA	10,899 SF
AREA OF OPEN SPACE	9.46 AC
LINEAR FEET OF STREETS	16,186 LF
NET ACREAGE	66.57 AC
GROSS ACREAGE	100.08 AC
EXISTING ZONING	UNZONED
PROPOSED ZONING	UNZONED
EXISTING LAND USE	AGRICULTURAL
PROPOSED LAND USE	MIXED USE



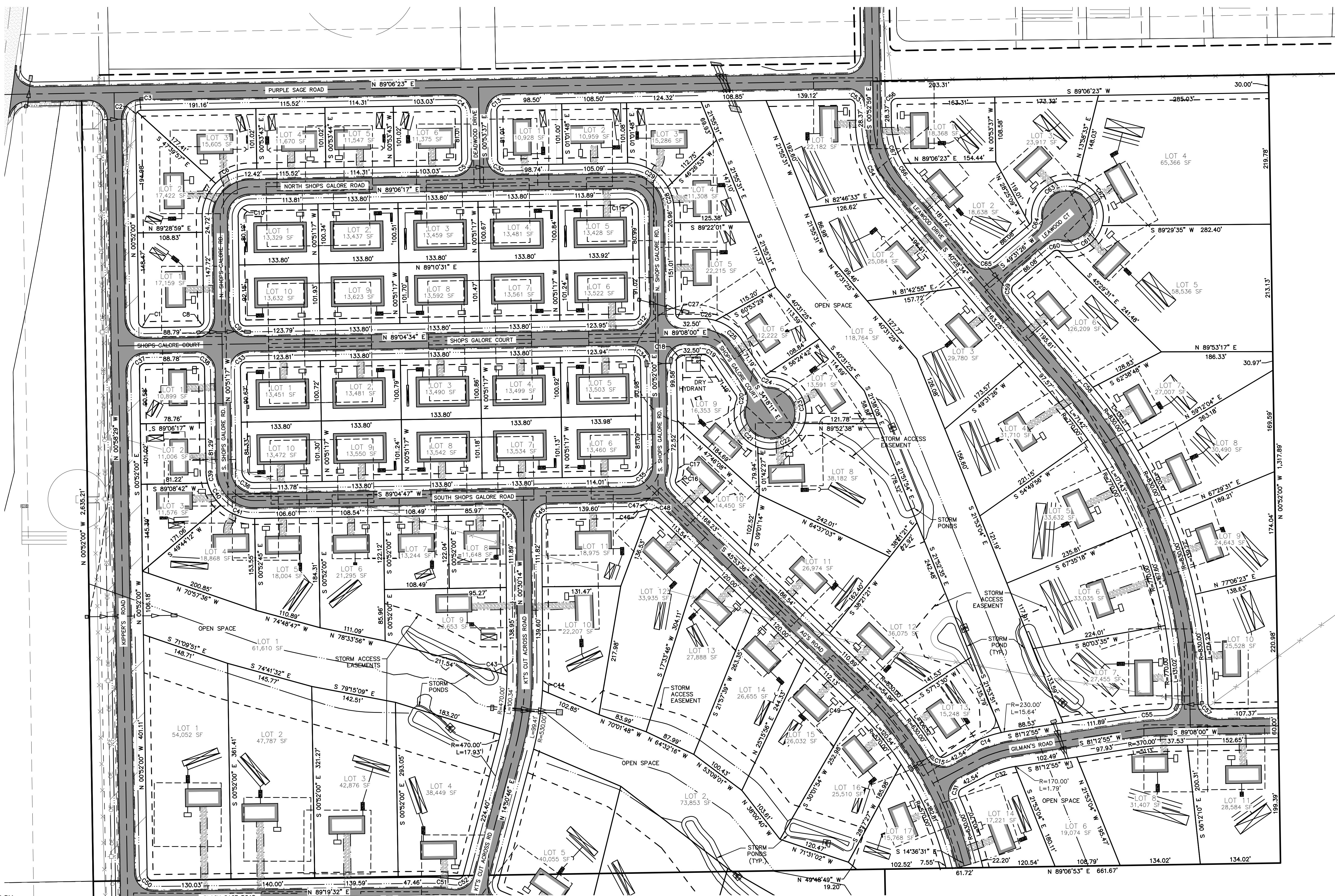
PROJECT LOCATION
SECTION 35, TOWNSHIP 2 NORTH, RANGE 26 EAST, P.M.M. OF YELLOWSTONE COUNTY, MONTANA

1/4	SEC.	T.	R.
35	2N	26E	

SHEET 1 OF 3
PRONGHORN SUBDIVISION
(A SUBDIVISION OF YELLOWSTONE COUNTY)

PRELIMINARY PLAT OF PRONGHORN SUBDIVISION

LOCATED IN SECTION 35, TOWNSHIP 2 NORTH, RANGE 26 EAST, P.M.M., YELLOWSTONE COUNTY, MONTANA



CURVE TABLE				
CURVE	LENGTH	RADIUS	CHORD BEARING	CHORD DISTANCE
C1	15.72'	10.00'	N 45°53'43" W	14.15'
C2	7.85'	10.00'	N 21°37'36" E	7.65'
C3	7.85'	10.00'	N 66°36'48" E	7.65'
C4	15.71'	10.00'	S 45°53'37" E	14.14'
C5	15.71'	10.00'	S 44°06'20" W	14.14'
C6	62.80'	80.00'	S 66°36'54" W	61.20'
C7	62.80'	80.00'	S 21°38'07" W	61.20'
C8	15.70'	10.00'	S 44°06'39" W	14.13'
C9	15.72'	10.00'	S 45°53'21" E	14.15'
C10	31.40'	20.00'	S 44°07'30" W	28.27'
C11	31.43'	20.00'	N 45°52'51" W	28.29'
C12	15.70'	10.00'	N 44°06'17" E	14.14'
C13	15.71'	10.00'	S 44°06'23" W	14.14'
C14	59.98'	230.00'	S 69°50'51" W	59.81'
C15	15.08'	10.00'	N 74°24'54" W	13.69'
C16	11.10'	10.00'	S 14°05'14" E	10.54'
C17	25.95'	80.00'	S 08°25'34" W	25.84'
C18	15.71'	10.00'	S 44°08'00" W	14.14'
C19	19.74'	20.00'	N 62°35'06" W	18.95'
C20	9.63'	10.00'	N 06°43'41" W	9.26'
C21	95.08'	60.00'	N 24°33'08" W	85.44'
C22	97.93'	60.00'	S 63°17'24" W	87.42'
C23	110.99'	60.00'	S 36°27'40" E	95.83'
C24	9.63'	10.00'	S 61°52'41" E	9.26'
C25	55.06'	80.00'	S 54°01'06" E	53.98'
C26	23.92'	80.00'	N 82°17'59" W	23.83'
C27	15.71'	10.00'	N 45°52'00" W	14.14'
C28	41.15'	80.00'	S 15°36'13" E	40.70'
C29	81.14'	80.00'	S 59°23'47" E	77.71'
C30	15.71'	10.00'	S 45°53'50" E	14.14'
C31	15.08'	10.00'	N 19°10'06" E	13.69'
C32	54.10'	170.00'	N 71°29'39" E	53.88'
C33	15.70'	10.00'	S 44°06'39" W	14.13'
C34	15.72'	10.00'	N 45°53'43" W	14.15'
C35	31.40'	20.00'	N 44°06'24" W	28.27'
C36	31.44'	20.00'	S 45°53'15" E	28.30'
C37	15.70'	10.00'	S 44°06'17" W	14.14'
C38	15.72'	10.00'	N 45°53'21" W	14.15'
C39	20.01'	80.00'	N 08°01'18" W	19.96'
C40	42.86'	80.00'	N 30°32'16" W	42.35'
C41	62.88'	80.00'	N 68°24'14" W	61.27'
C42	15.78'	10.00'	S 45°42'43" E	14.19'
C43	7.64'	470.00'	S 00°02'17" E	7.64'
C44	33.71'	530.00'	N 01°19'06" E	33.70'
C45	15.63'	10.00'	N 44°17'57" E	14.09'
C46	25.95'	80.00'	N 79°47'14" E	25.84'
C47	5.06'	10.00'	N 84°59'40" E	5.01'
C48	6.04'	10.00'	N 63°11'58" W	5.95'
C49	7.88'	570.00'	S 45°29'50" E	7.88'
C50	15.67'	10.00'	S 45°46'14" E	14.12'
C51	50.48'	330.00'	N 86°17'33" W	50.43'
C52	14.53'	10.00'	S 56°28'04" W	13.28'
C53	15.71'	10.00'	S 45°53'18" E	14.14'
C54	138.17'	200.00'	S 20°41'06" E	135.44'
C55	59.42'	430.00'	S 85°10'28" W	59.38'
C56	15.71'	10.00'	S 44°06'42" W	14.14'
C57	15.65'	10.14'	N 45°52'00" W	14.14'
C58	9.98'	830.00'	N 40°07'54" W	9.98'
C59	15.71'	10.00'	N 04°31'26" E	14.14'
C60	9.63'	10.00'	N 77°05'56" E	9.26'
C61	93.05'	60.00'	S 60°14'37" W	84.00'
C62	94.57'	60.00'	N 29°20'18" W	85.08'
C63	116.38'	60.00'	N 49°56'31" E	98.98'
C64	9.63'	10.00'	N 21°56'55" E	9.26'
C65	15.71'	10.00'	N 85°28'34" W	14.14'
C66	23.18'	140.00'	N 35°44'01" E	23.15'
C67	73.54'	140.00'	S 15°56'32" E	72.70'

PREPARED BY:
IMEG
175 N. 27TH ST., STE 1312
BILLINGS, MT 59101
PH: 406.545.6420
FAX: 406.256.1191
www.imegcorp.com
IMEG PROJECT NO. 24001698



LEGEND

- (E) = EXISTING
- (P) = PROPOSED
- R/W OR R.O.W. = RIGHT-OF-WAY
- U.E. = UTILITY EASEMENT
- N.A.S. = NO ACCESS STRIP
- = CISTERN
- = DRAINFIELD

1/4	SEC.	T.	R.
35	2N	26E	

SHEET 2 OF 3
PRONGHORN SUBDIVISION
(A SUBDIVISION OF YELLOWSTONE COUNTY)

