



# Palm Beach County Coastal Link Update

April 2021

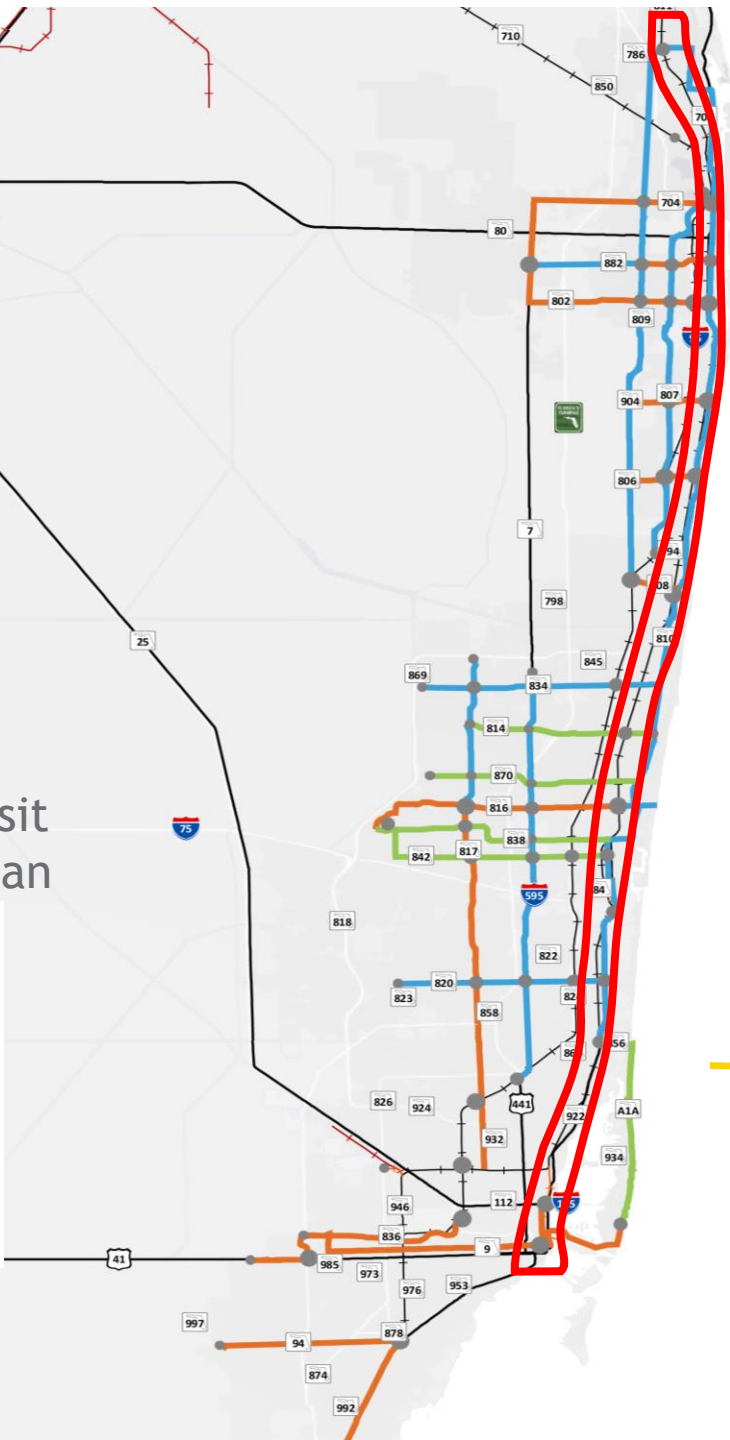


# Regional Transit Connections



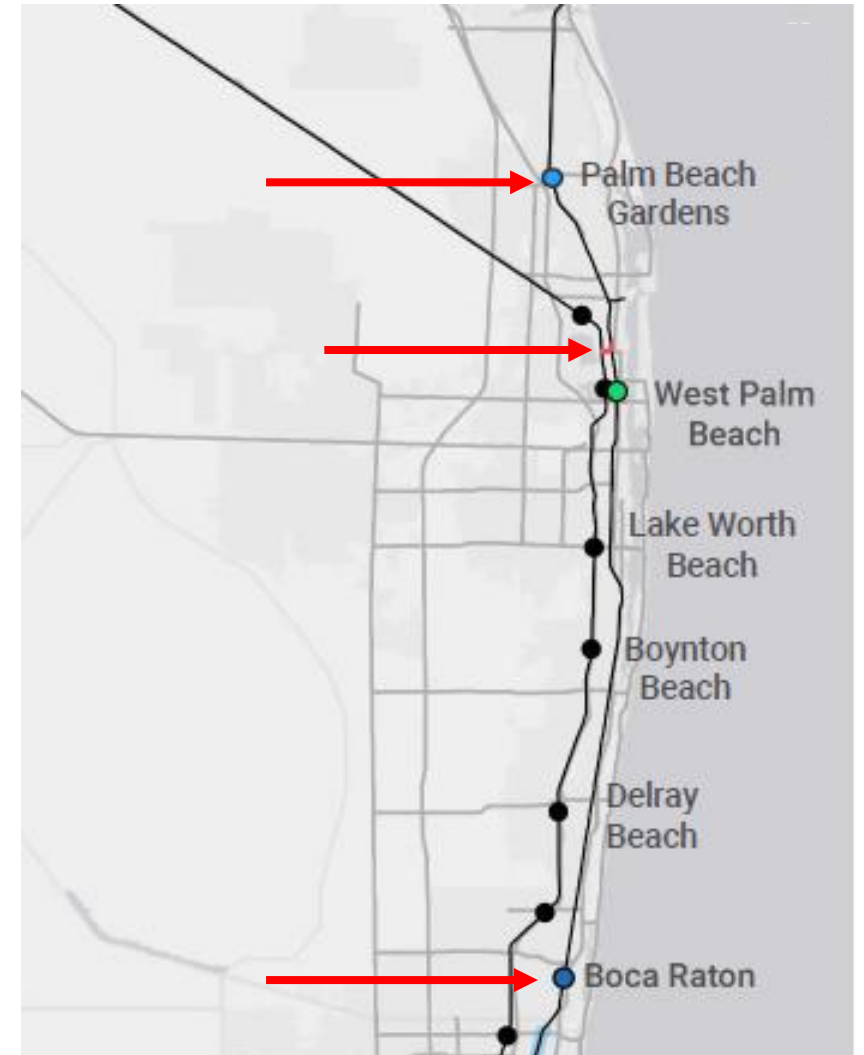
## Regional Transit Investment Plan

- High Transit Investment
- Medium Transit Investment
- Low Transit Investment
- High, Medium and Low Station Level Investments



# Coastal Link Railway Activities

- Completed - FDOT Northwood Crossover
- Underway - Brightline Phase 2 Construction
- Coming Soon - Boca Raton Station
- In Discussion
  - Palm Beach Gardens Station
  - Dedicated Transportation Revenue Source



# Northwood Crossover

- Recently completed by FDOT
- Crossover between SFRC and FEC
  - North of Downtown West Palm Beach & Brightline layover
- Funding Partners were FHWA (TIGER), FDOT, SFRTA, FECR, and CSXT
- Facilitates passenger rail to North PBC



# Brightline Double Tracking

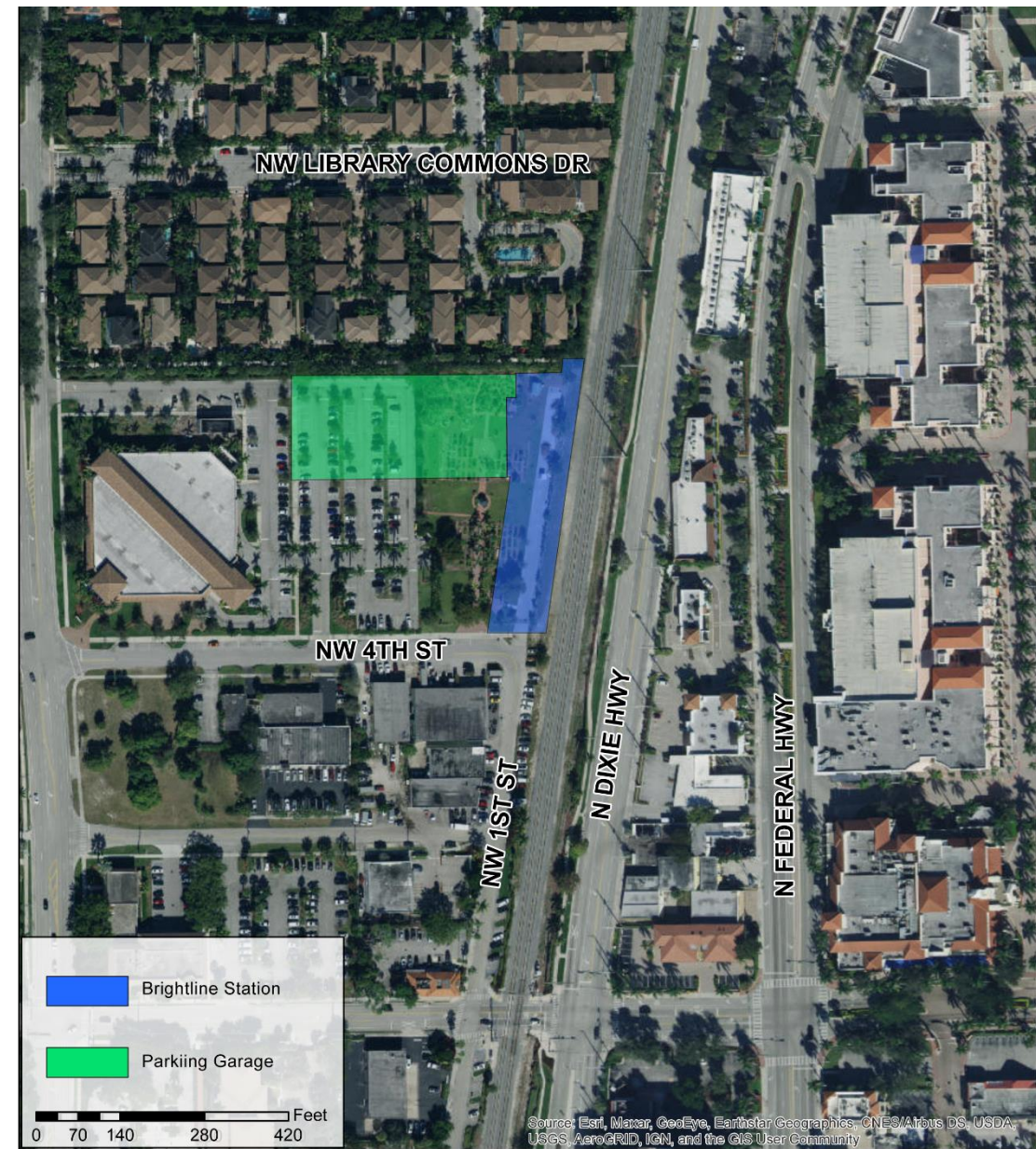
- Continuous double tracking on FEC from West Palm Beach to Cocoa
- Expected to be complete in 2022
- 26 rail crossing upgrades in North PBC
  - Establish Quiet Zones
  - TPA is a funding partner



Photo Credit: Palm Beach Post

# Boca Raton Station

- \$46 million project
  - Brightline contributes \$20M
  - City contributes land (\$1/yr lease) and \$10M
  - FRA CRISI grant contributes \$16.4M



# Palm Beach Gardens Station

- Included in LRTP and City Mobility Plan
  - City has adopted mobility fee, potential capital funding source
  
- City staff have approached Brightline about the proposed station. No agreements have been made at this time.



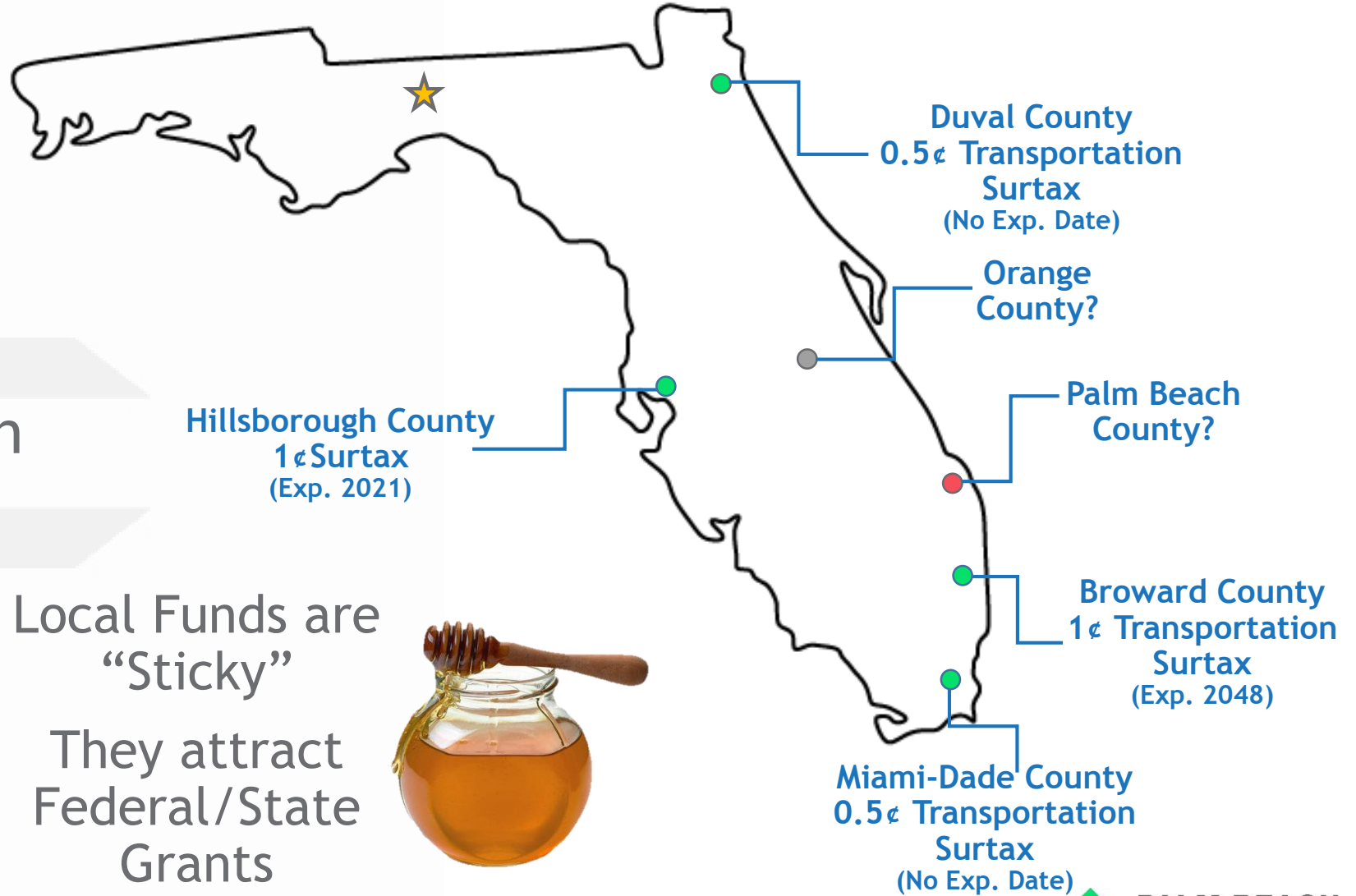
# What are the Next Steps?

- Pursue Funding

- Conduct Project

Development & Design

- Implementation



Local Funds are  
"Sticky"

They attract  
Federal/State  
Grants



# Questions?