

# *brightline*<sup>®</sup>

**Ali Soule**

Update to Broward MPO Committees  
September 22



# Connecting two of the largest and most congested markets in the nation

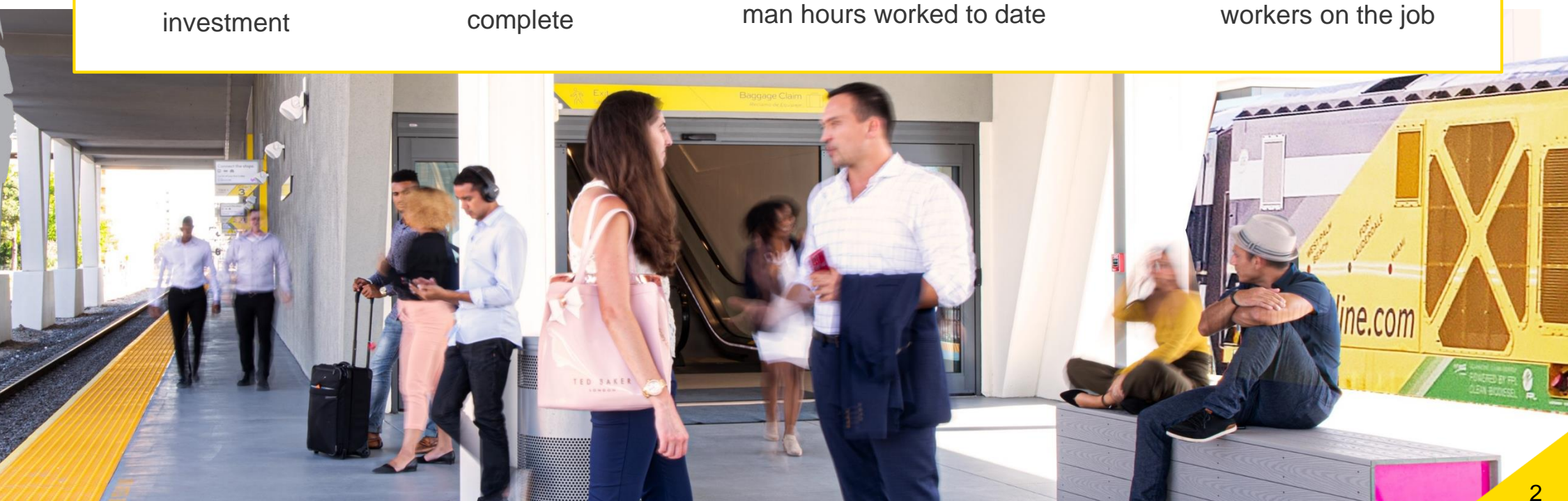
- Service to relaunch in **early November**
- Two additional In-Line stations underway: **Aventura and Boca Raton**
- Working with Miami-Dade and Broward counties on **coastal link commuter rail system**
- Orlando expansion more than **60% completed**
- **Disney Springs station** recently announced and in development
- Planned extension to **Tampa**

**\$2.7B**  
investment

**61%**  
complete

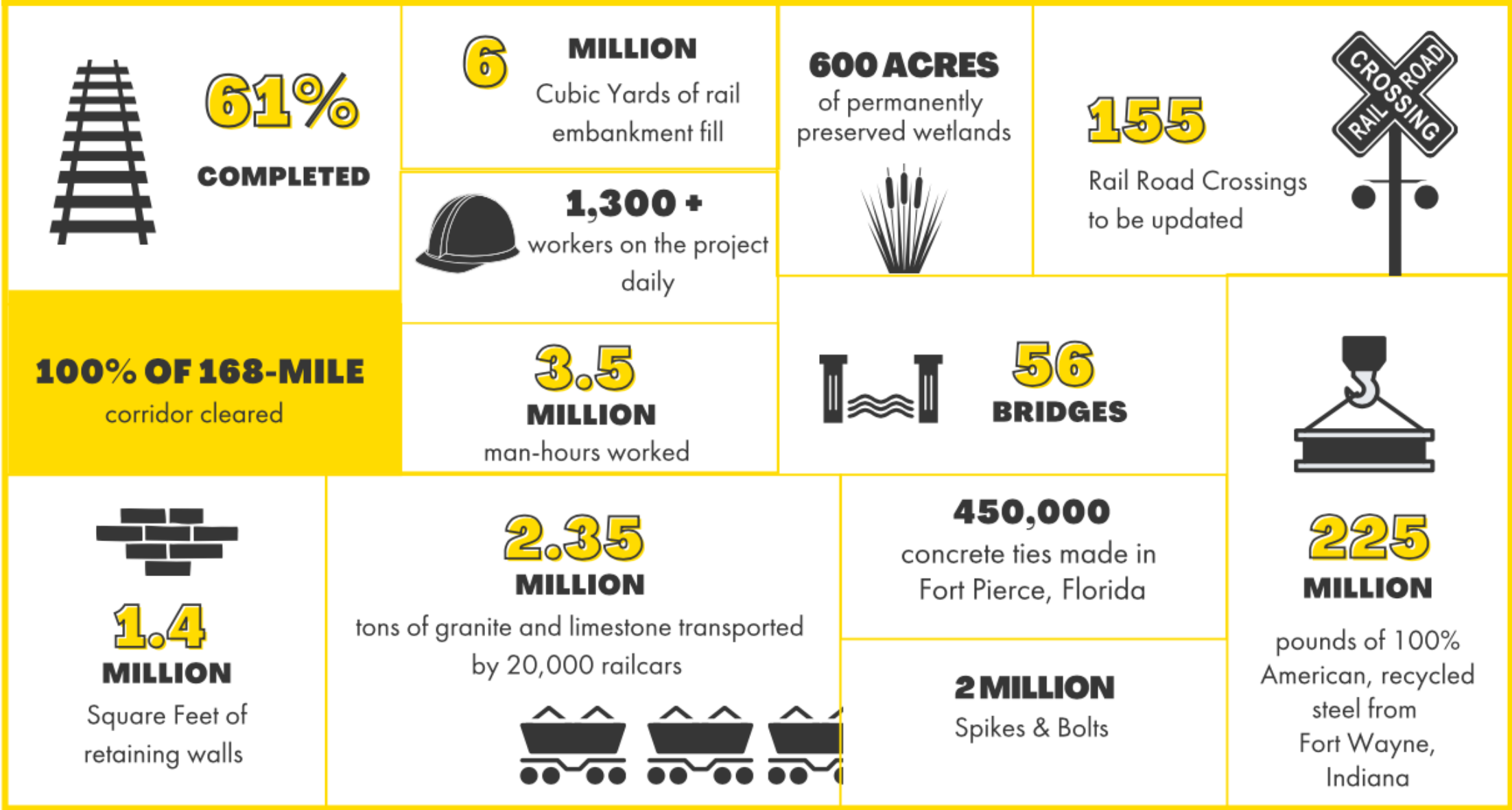
**3.5 mm**  
man hours worked to date

**1300+**  
workers on the job

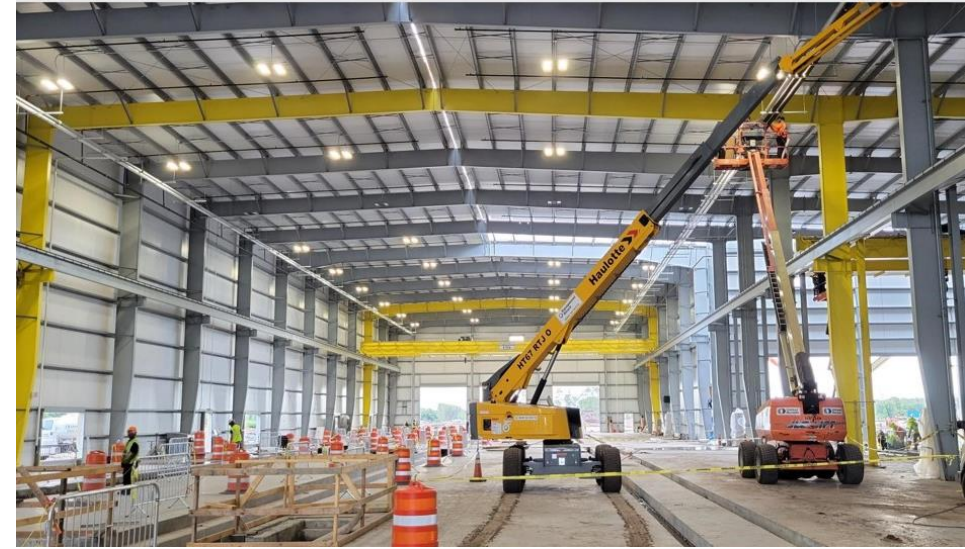


## Focused on enhancing the guest experience for re-launch

- Increasing COVID-protocols
- Offering new food & beverage choices
- In-station experiences
  - New bars, Premium service and autonomous market
- Launching Mobility as a Service platform & journey planner
- Hiring 200 new teammates
  - Starting wage is \$18/hour plus \$750 sign-on bonus



Phase 2 Construction

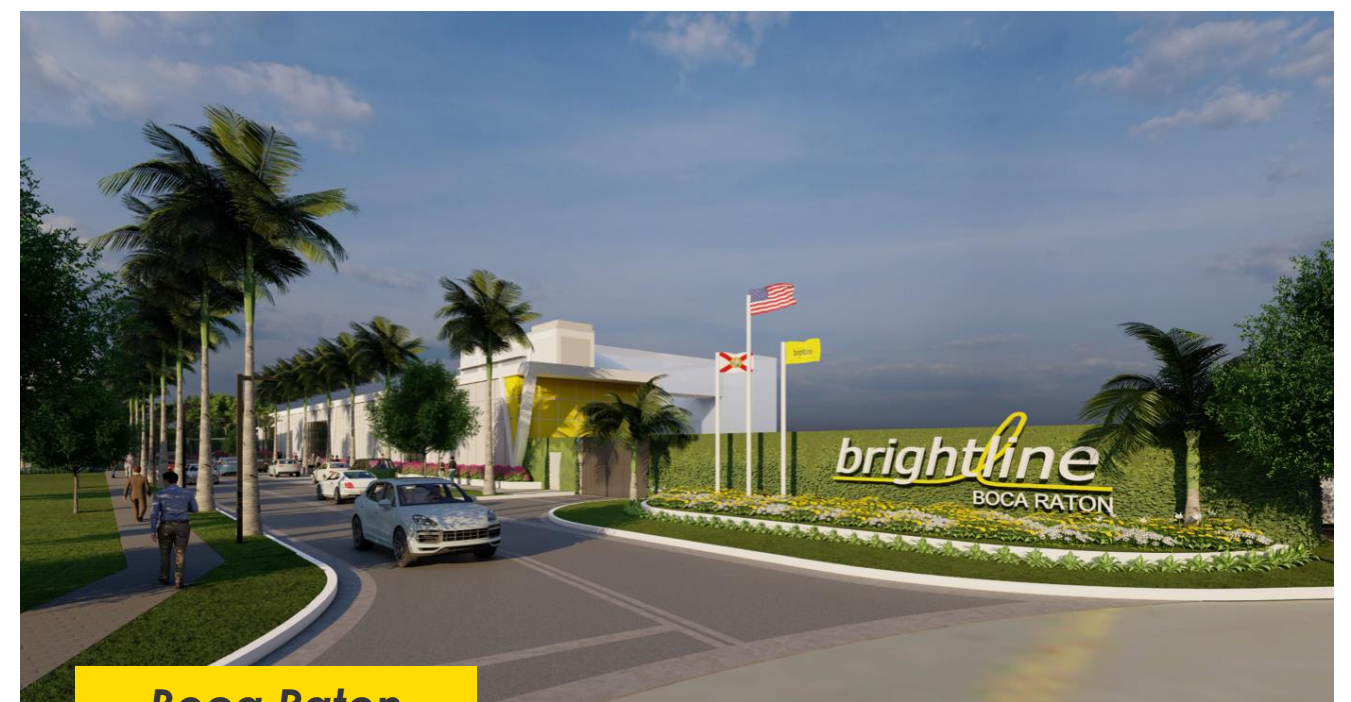


# Future Projects

- Stations in Aventura and Boca Raton
- Miami-Dade and Broward county commuter rail
- Las Vegas – Southern California



**Aventura**



**Boca Raton**

# Safety Initiatives

- BuzzBoxx
- CRISI 2017 grant
- Partnership with South Florida school districts
- Law enforcement outreach
- Red light camera pilot in North Miami
- Safety ambassadors and VMS signs at crossings prior to launch
- Tri-lingual materials and rail safety pledge



**GADE,  
KOUTE  
EPI RET ANVI**

**LOOK,  
LISTEN  
& LIVE**

**OBSERVA,  
ESCHUCHA  
& VIVE**

*brightline*<sup>®</sup>



[GoBrightline.com](http://GoBrightline.com)