

STRATEGIC INTERMODAL SYSTEM COST FEASIBLE PLAN UPDATE

Florida Department of Transportation



March 2023

AGENDA

Strategic Intermodal System (SIS) Cost Feasible Plan (CFP) Update

- Background and Purpose
- Previous Coordination
- Modal Set Aside
- Draft Cost Feasible Plan
- Schedule
- Safety Message and Questions

BACKGROUND AND PURPOSE

- The Strategic Intermodal System (SIS)
 - Focuses resources on transportation facilities and services that support critical interregional, interstate, and international trips
 - High priority network of transportation facilities important to the state's economy and mobility
- 2050 Cost Feasible Plan (CFP)
 - Ensures consistency with the goals of the Florida Transportation Plan (FTP) and the objectives of the SIS Policy Plan
 - Evaluate SIS needs based on future revenues
 - Develops a phased plan for cost feasible improvements



PREVIOUS COORDINATION

- Joint Virtual Workshop
 - Held on August 5th, 2022
 - Agenda Included:
 - Intent of the SIS CFP
 - Tentative Schedule
 - Input from Partners Regarding:
 - FDOT Proposed Projects
 - Recommendations for Additional Projects
- Additional Broward MPO Staff Workshop
 - Discussed Potential Modal Projects (Modal Set Aside)



MODAL SET ASIDE

- 20% Modal Set Aside
 - Exclusive of SIS Cost Feasible Plan
 - Modal Projects outside of the Five-Year Work Program are included in the SIS Multimodal Unfunded Needs Plan
 - Coordinated (D4 / MPO Staff) Priorities
 - Broward Commuter Rail (BCR) South
 - Fort Lauderdale – Hollywood International Airport Intermodal Center
 - Express Bus (Capital for Bus Purchases)



DRAFT COST FEASIBLE PLAN (BROWARD COUNTY)

| ID | FACILITY | FROM | TO | Design | | | Right of Way and Construction | | | P3 Bond Repayment | | | Improvement TYPE |
|------|----------------------------|---------------------------|-----------------------------------|---------|----------|----------|-------------------------------|-----------|-----------|-------------------|-------|------|---------------------|
| | | | | PDE | PE | TOTAL | ROW | CON | TOTAL | COST | Begin | #Yrs | |
| 1107 | I-595 | E. of I-75 | W. of I-95 | | | | | | | \$902,909 | 2033 | 12 | MGLANE |
| 3937 | I-595 and Davie Rd | S. of SR 84 | SR 84 | \$2,000 | \$ 2,147 | \$ 4,147 | \$ 2,204 | \$ 24,090 | \$ 2,204 | | | | HWYCAP |
| 3939 | I-595 and Flamingo Rd | NW 8th St | S. of Broward Blvd | \$2,000 | \$ 2,301 | \$ 4,301 | \$ 2,663 | \$ 25,818 | | | | | HWYCAP |
| 3936 | I-595 and NW/SW 136th Ave | SW 5th St | NW 2nd St | \$2,000 | \$ 6,373 | \$ 8,373 | \$ 15,891 | \$ 71,511 | | | | | HWYCAP |
| 3938 | I-595 and Pine Island Rd | N. of Nova Rd | SR 84 | \$2,000 | \$ 5,567 | \$ 7,567 | \$ 21,558 | \$ 62,459 | | | | | HWYCAP |
| 3940 | I-595 and University Drive | S. of SR 84 | N. of SR 84 | \$2,000 | \$ 6,644 | \$ 8,644 | \$ 6,984 | \$ 74,548 | | | | | HWYCAP |
| 3409 | I-95 | Miami-Dade/Broward C/L | N. of Hollywood Blvd | | | | \$ 64,817 | \$189,010 | \$253,827 | | | | M-INCH |
| 3398 | I-95 | SR-84 | S. of Broward Blvd | \$3,000 | \$33,526 | \$36,526 | \$ 27,500 | \$376,160 | | | | | HWYCAP |
| 3415 | I-95 | at Commercial Blvd | | | | | \$ 46,052 | \$ 8,226 | \$ 54,278 | | | | M-INCH |
| 3414 | I-95 | at Oakland Park Blvd | | | | | \$ 10,698 | \$ 42,765 | \$ 53,463 | | | | M-INCH |
| 3413 | I-95 | at Davie Blvd | | | | | | \$ 28,154 | \$ 28,154 | | | | M-INCH |
| 3412 | I-95 | Miami-Dade/Browad C/L | N. of Griffin Road | | | | \$180,049 | \$494,848 | \$180,049 | | | | HWYCAP |
| 3397 | I-95 | N. of Broward Blvd | Sunrise Blvd | \$2,000 | \$ 4,757 | | \$ 2,000 | \$ 53,368 | \$ 2,000 | | | | HWYCAP |
| 3410 | I-95 | at Stirling Rd | | | | | | \$ 8,979 | | | | | M-INCH |
| 3671 | Copans Road | at SFRC | | \$2,000 | \$ 5,199 | \$ 7,199 | \$ 23,630 | \$ 26,513 | \$ 50,143 | | | | GRASEP |
| 3673 | SR 814 / Atlantic Blvd | at SFRC | | \$2,000 | \$ 3,443 | \$ 5,443 | \$ 3,382 | \$ 38,631 | \$ 42,013 | | | | GRASEP |
| 3935 | SR 834 / Sample Road | at FEC Railway | | \$2,000 | \$ 5,199 | \$ 7,199 | \$ 23,630 | \$ 26,513 | | | | | GRASEP |
| 3672 | SR 834 / Sample Road | at SFRC | | \$2,000 | \$ 6,938 | \$ 8,938 | \$177,844 | \$ 77,849 | \$255,693 | | | | GRASEP |
| 3941 | University Dr | S. of SW 30th St. | S. of SR 84 | \$1,500 | \$ 5,160 | \$ 6,660 | \$ 13,505 | \$ 57,897 | | | | | HWYCAP |
| 3391 | US 27 | Krome Avenue (Miami-Dade) | Evercane Road (Hendry County) | | \$ 2,217 | \$ 2,217 | | \$ 25,612 | \$ 25,612 | | | | ITS |
| 3392 | US 27 | Pembroke Road | SW 26th Street (N. of Griffin Rd) | \$3,000 | \$17,515 | \$20,515 | | \$196,513 | | | | | SERVE |
| 3389 | US 27 | Krome Avenue (Miami-Dade) | Broward/Palm Beach C/L | \$2,000 | \$29,009 | \$31,009 | | \$325,483 | | | | | FRTCAP |

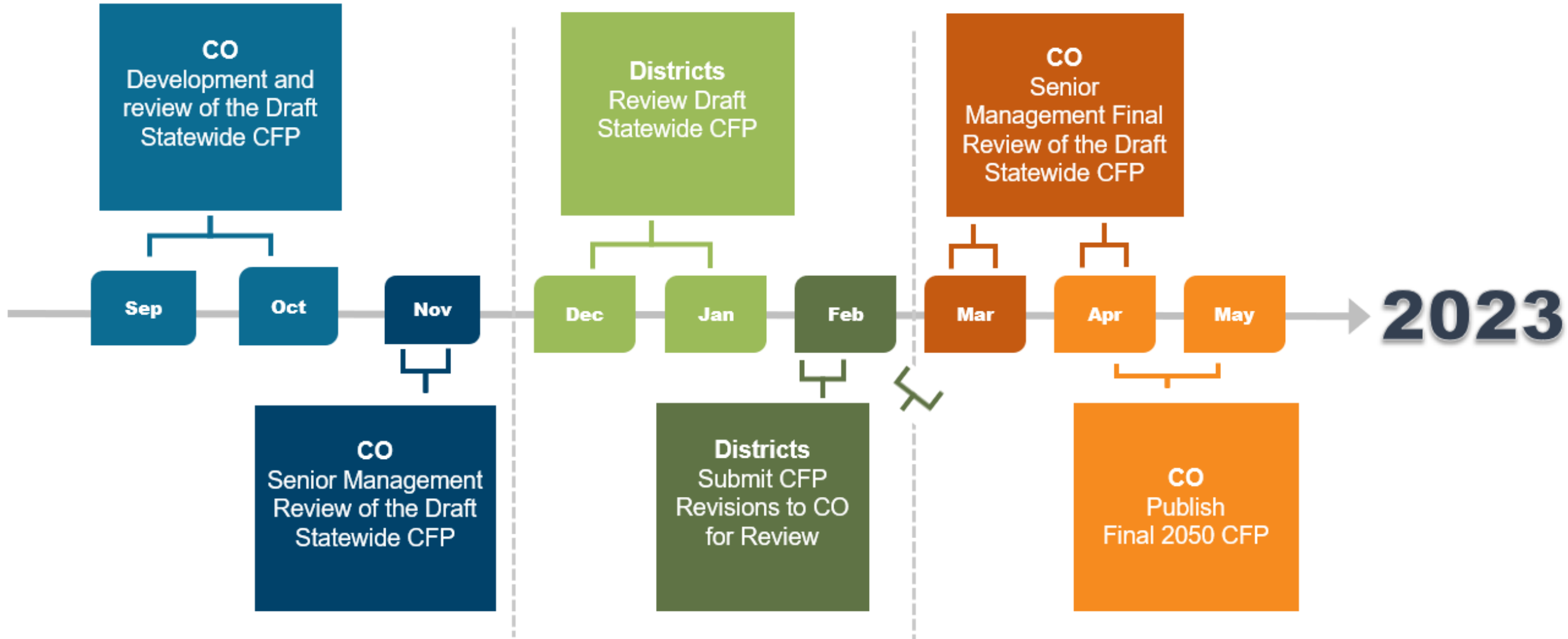
LEGEND

| |
|--------------------------------|
| FY 2032/2033 - 2034/2035 |
| FY 2035/2036 - 2039/2040 |
| FY 2040/2041 - 2044/2045 |
| FY 2046/2047 - 2049/2050 |
| Requested, But Not Feasible |
| Mega Projects Phased Over Time |

NOTES

- (1) All values in thousands of Present Day Dollars (2023).
- (2) All phase costs shown as supplied by each District.
- (3) CON includes both Construction (CON52) and Construction Support (CEI).
- (4) ROW includes both Right-of-Way Acquisition/Mitigation (ROW43/45) and Right-of-Way Support.
- (5) "P3 Funds" - Used to fund Public-Private Partnership projects over a specified number of years.
- (6) Revenue forecast provides separate values for PDE and PE than for ROW and CON.
- (7) This is a DRAFT and revisions will be made based on further coordination.

SCHEDULE





**STAY AT
THE SCENE**

**IF YOU'RE INVOLVED IN A CRASH,
STAY AT THE SCENE
AND CALL FOR HELP.**

FLHSMV



QUESTIONS?