



TRENDS IMPACTING OUR TRANSPORTATION FUTURE

BROWARD MPO

JENNIFER FORTUNAS, P.E.
OFFICE OF POLICY PLANNING





BY 2030,
MINORITIES
WILL ACCOUNT FOR
23%
OF FLORIDA'S
POPULATION

Source: Bureau of Economic and Business Research.



NEARLY
1 IN 4
FLORIDIANS
WILL BE
65
OR OLDER
BY 2030

Source: Bureau of Economic and Business Research.



10.6M TRIPS FOR
TRANSPORTATION
DISADVANTAGED
PASSENGERS IN FY 2022

Source: Florida Commission for the Transportation Disadvantaged.

13%
OF FLORIDIANS ARE LIVING
BELOW THE POVERTY LINE

Source: U.S. Census Bureau.

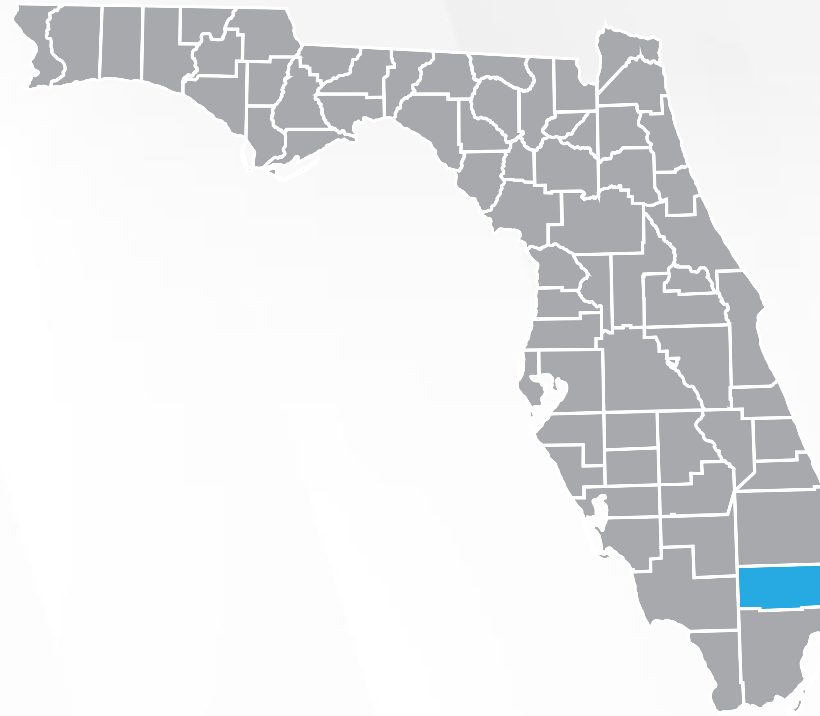


IN FLORIDA,
**CONGESTION
DURATION**

IS DOWN

38%

SINCE 2017 TO ALMOST
19 MINUTES



IN BROWARD COUNTY,
**CONGESTION
DURATION**

IS DOWN NEARLY

60%

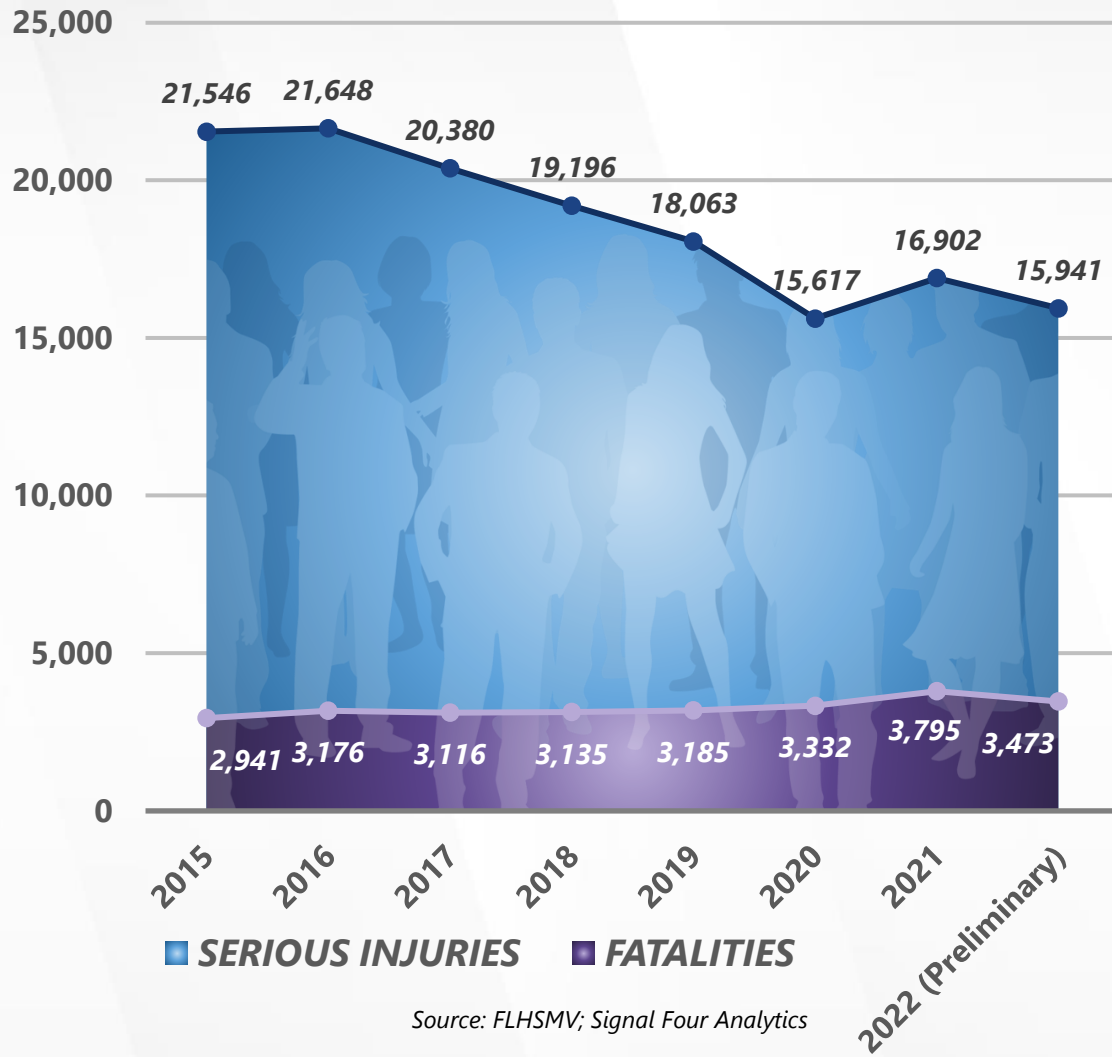
SINCE 2017 AT JUST OVER
26 MINUTES

Source: FDOT Sourcebook

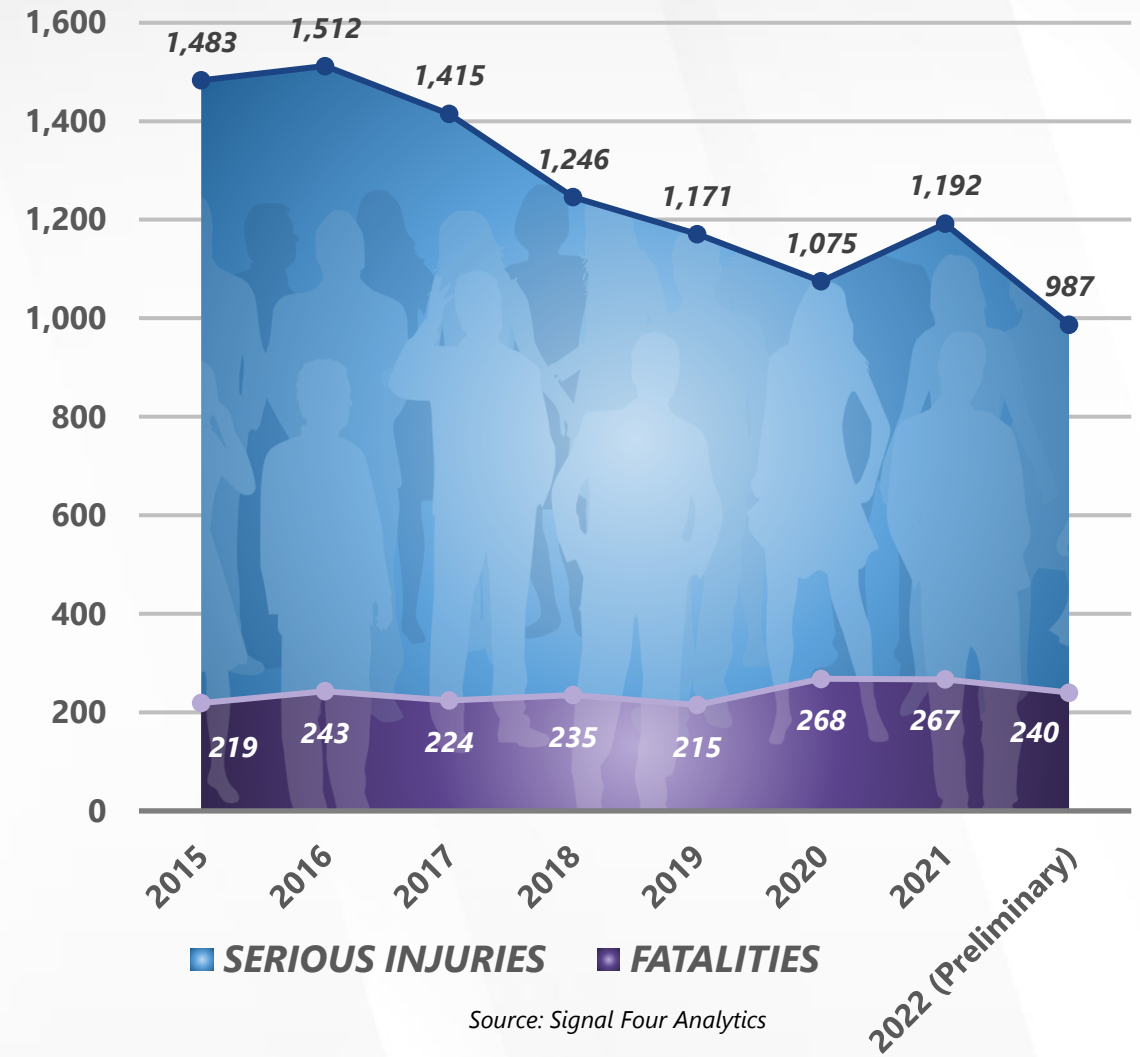


Community Trends

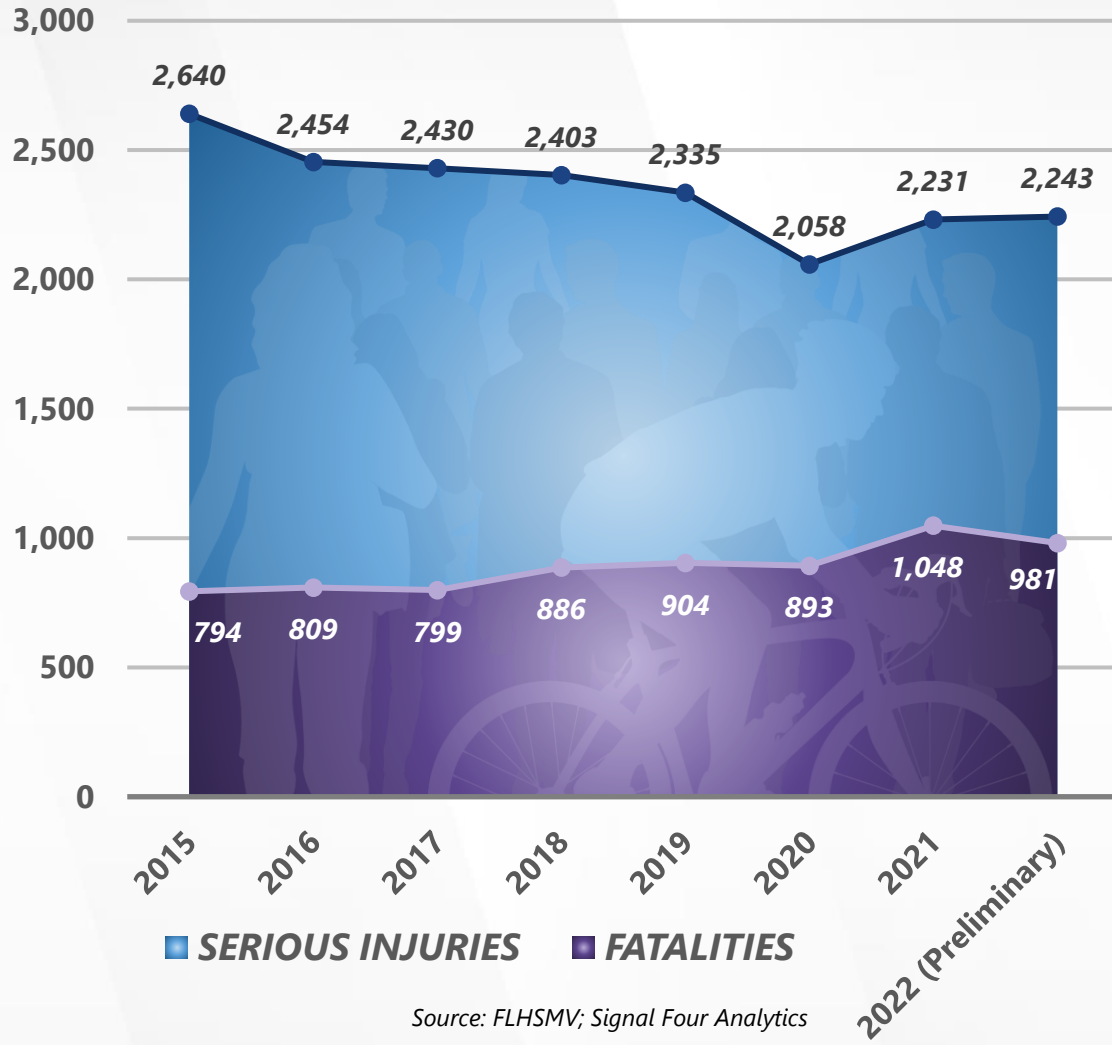
STATEWIDE FATALITIES AND SERIOUS INJURIES



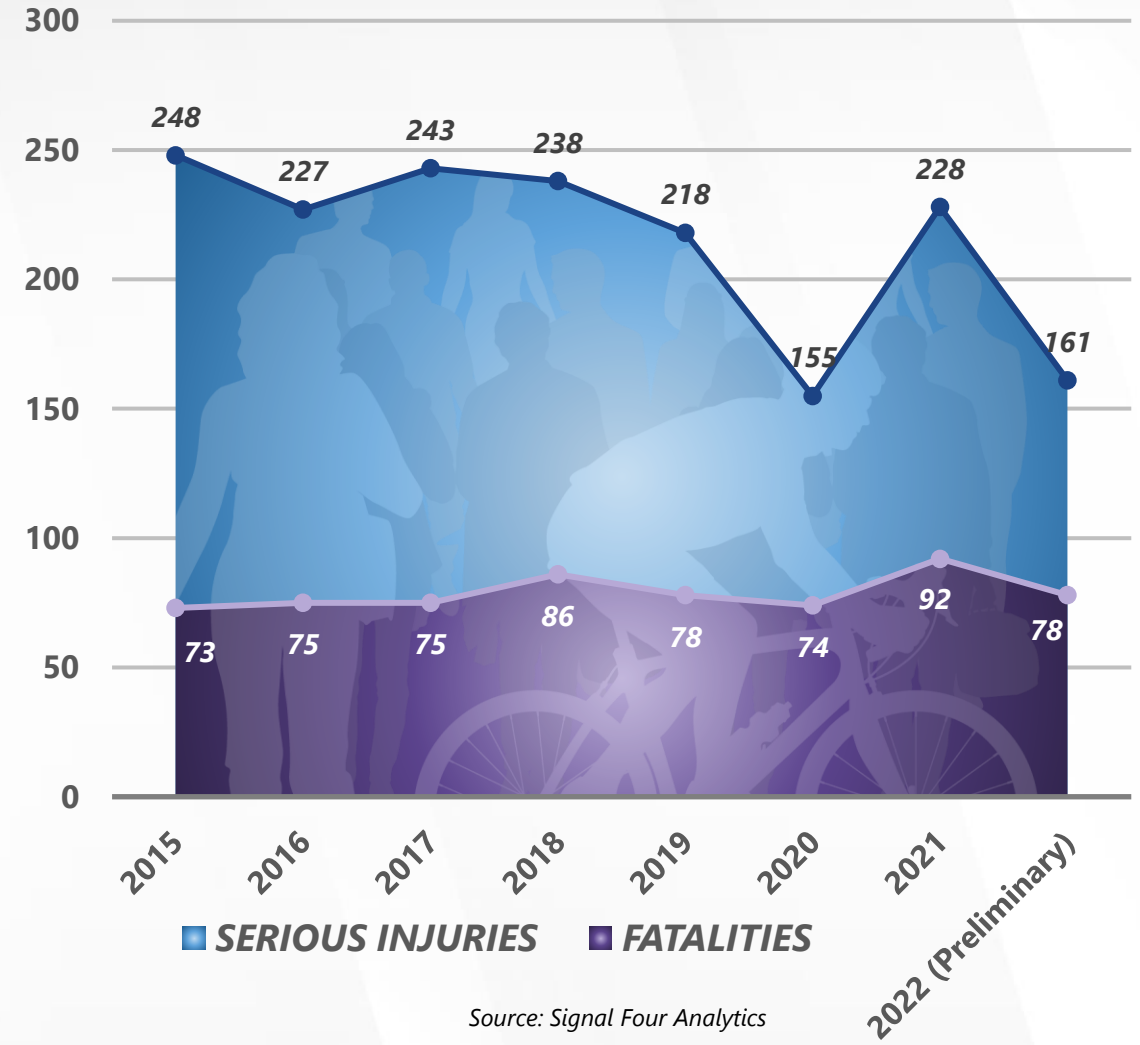
BROWARD COUNTY FATALITIES AND SERIOUS INJURIES



STATEWIDE PEDESTRIAN AND BICYCLIST FATALITIES AND SERIOUS INJURIES



BROWARD COUNTY PEDESTRIAN AND BICYCLE FATALITIES AND SERIOUS INJURIES





FLORIDA CAN EXPECT BETWEEN
2.2 TO 2.5
INCHES OF
SEA LEVEL RISE
BETWEEN 2020 AND 2030*

**Depending on location;
NOAA Low Projection*

Source: NOAA



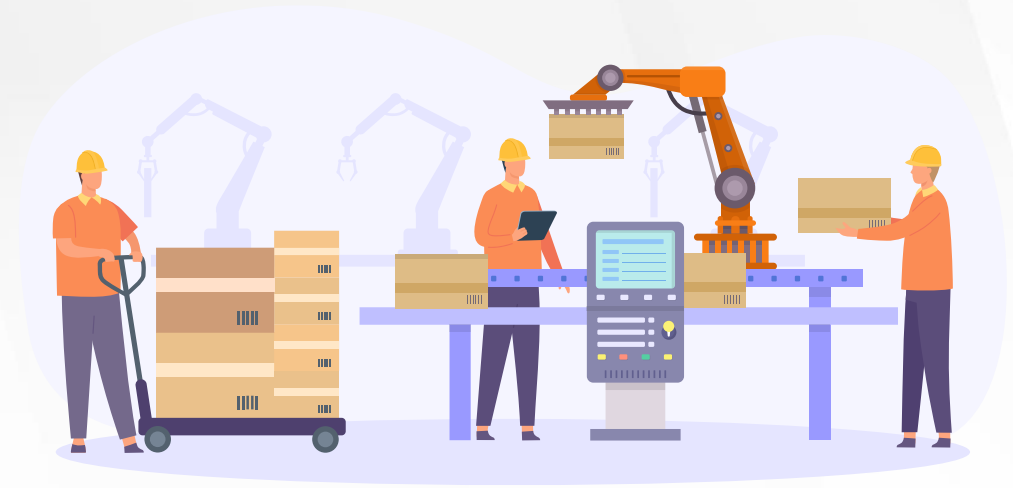
FDOT HAS SPENT MORE THAN
\$1.7 BILLION
ON HURRICANE IAN
RECOVERY EFFORTS



Source: FDOT

FLORIDA CURRENTLY HAS
424,000 PEOPLE
EMPLOYED IN MANUFACTURING,
THE HIGHEST SINCE 2002

Source: U.S. Bureau of Labor Statistics.



THE U.S. LOGISTICS COST IS
8% OF GROSS
DOMESTIC PRODUCT,
HIGHER THAN IT HAS BEEN IN THE LAST DECADE

Source: Council of Supply Chain Management Professionals.



Supply Chain Trends

THERE ARE MORE THAN
95,600 ELECTRIC VEHICLE
REGISTRATIONS

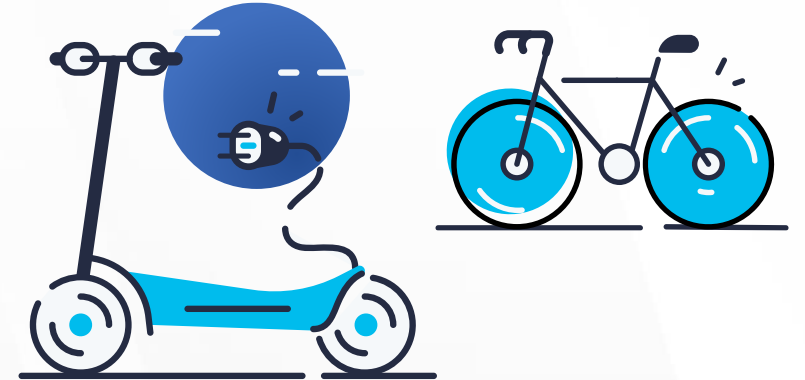
AND OVER
2,500 PUBLICLY ACCESSIBLE ELECTRIC
VEHICLE CHARGING STATIONS
IN FLORIDA.



Source: USDOE Alternative Fuels Data Center, 2021

INNER CITY TRIPS WITH
**SHARED BICYCLES
& E-SCOOTERS**
HAVE RISEN

60%
YEAR-OVER-YEAR



Source: FDOT, Emerging Trends, 2022

IN BROWARD COUNTY, THE NUMBER OF PEOPLE
WORKING FROM HOME
INCREASED 37%

BETWEEN 2016 AND 2020

WHILE THAT
NUMBER INCREASED

43%
STATEWIDE



THERE ARE
391,000
OPEN JOBS
IN FLORIDA AND
271,000
UNEMPLOYED PERSONS



Source: Florida Department of Economic Opportunity



FLORIDA'S
UNEMPLOYMENT RATE IS
2.5%

THE LOWEST IT HAS BEEN
IN MORE THAN A DECADE

Source: U.S. Bureau of Labor Statistics.



**NO RECOMMENDATIONS FROM THE OIG AUDIT.
GOOD WORK BROWARD MPO!**

THANK YOU!

Jennifer Fortunas, P.E.
Office of Policy Planning
Jennifer.Fortunas@state.dot.fl.us
850-414-4814