



Shared-Use Nonmotorized (SUN) Trail Program

**Developing the Next New Fifth Year of the Work Program
(Fiscal Years 2025/2026)
SUN Trail Funding Requests**

Location: INSERT

SUN Trail Requests for Funding: Part I and II

Florida Department of Transportation Shared-Use Nonmotorized (SUN) Trail Program

Request for Funding



SUN Trail program funding is limited to geographic areas within the SUN Trail network, the provisions of Section 339.81, Florida Statutes, the Florida Department of Financial Services Catalog of State Financial Assistance Number 55.038, and the Florida Department of Transportation (FDOT) Work Program Instructions Part III: Trails.

PART I – APPLICANT INFORMATION

- Type of Applicant (select one):
 - Municipality/County Government
 - State Agency
 - Federal Agency
 - Recognized Tribal Government
 - Metropolitan/Transportation Planning Organization/Agency (MPO)
- Name and job title and office of the person who will be in direct contact with FDOT for this project:
- Agency of the person who will be in direct contact with FDOT for this project:
- Email of the person who will be in direct contact with FDOT for this project:
- Telephone Number of the person who will be in direct contact with FDOT for this project:

PART II – PROJECT OVERVIEW

- Project Name:
- Municipality where the project is located:
- County where the project is located:
- FDOT district number where the project is located:
- Boundary of the project proposed for SUN Trail funding (give the address or nearest cross streets, municipality, and zip code):
 - Termini Begin:
 - Termini End:
- Who is the landowner of the proposed project location?
 - The location of this project is entirely on FDOT right-of-way.
 - The location of this project is entirely on non-FDOT publicly-owned right-of-way.
 - The location of this project is on both FDOT and non-FDOT, publicly-owned right-of-way.
 - Parcels within this project boundary are privately owned, the acquisition of right-of-way must occur.
- Total length of this project proposed for SUN Trail funding:

**Applicant Information –
agency type and
point of contact**

**Project Overview –
name, location,
ownership, length**

SUN Trail Requests for Funding: Part III

Florida Department of Transportation Shared-Use Nonmotorized (SUN) Trail Program Request for Funding



Regional Trail System and Individual Trail projects **must meet all eligibility criteria** to receive funding consideration by the SUN Trail program. "Requests for Funding" without the required information are ineligible and will not receive funding consideration.

PART III – ELIGIBILITY CRITERIA

1. Funding is limited to geographic areas within the SUN Trail network. Will the project be developed as a paved multi-use trail within the SUN Trail network?
 Yes No
 - a. Provide an aerial location map illustrating the project boundary and project limits.
 - b. Provide a map illustrating the project location within the SUN Trail network.
 - c. Provide the project typical section (this should be a pdf of the typical section schematic depicting existing and proposed features, dimensions, and right-of-way lines).
2. Funding is limited to projects prioritized by the applicable authority. If the project is within a boundary of a Metropolitan/Transportation Planning Organization/Agency (MPO), it must be prioritized by the MPO. Projects outside of an MPO boundary must be identified as a priority of the county (inclusive of their municipalities), tribal government, federal or state agency. Is the project a priority of the applicable authority?
 Yes No
 - a. Indicate the priority number of the project:
 - b. Provide the prioritization list.
 - c. Complete Part VII (CERTIFICATION OF PROJECT PRIORITIZATION).
3. Has a non-FDOT governmental entity formally committed to operation and maintenance of the project (long-term trail manager)?
 Yes No
 - a. Complete Part VIII (CERTIFICATION OF WILLING MANAGER).
4. Is the project consistent with the applicable comprehensive plan(s), transportation plan(s), or the long-term management plan(s)?
 Yes No
 - a. Indicate the type of plan(s), applicable page number(s) and date(s) of adoption:
 - b. Provide documentation of applicable project concurrency information [e.g. supporting resolution(s), excerpt from comprehensive plan(s), transportation plan(s), unit management plans, etc.].

DO NOT PROCEED TO PART IV IF PROJECT RESULTED IN A "NO" RESPONSE IN PART III.

Required to meet the Eligibility Criteria

1. Mapping the project

- a. Aerial Location Map illustrating the project boundary and project termini/project limits (one PDF file)
- b. Vicinity Map illustrating the location of the project within the SUN Trail network (one PDF file)
- c. Typical Section schematic depicting the existing and proposed features, dimensions and right-of-way lines (one PDF file)

Help us visualize and understand your proposal

...give us details



- Focus your proposal
- Display locational information of your proposal
- Provide context for your proposal
- Organize information about your proposal
- Remember to include a map legend and labels

...434 Streets in Florida are named Second

Example Aerial Map of Project Limits from Previous Year



Includes:

1. Project Name

- Tower Road Multi-Use Path

2. Project Limits and Ownership

- within county right-of-way along Tower Road
- from SW 26th Place
- to SW 8th Avenue

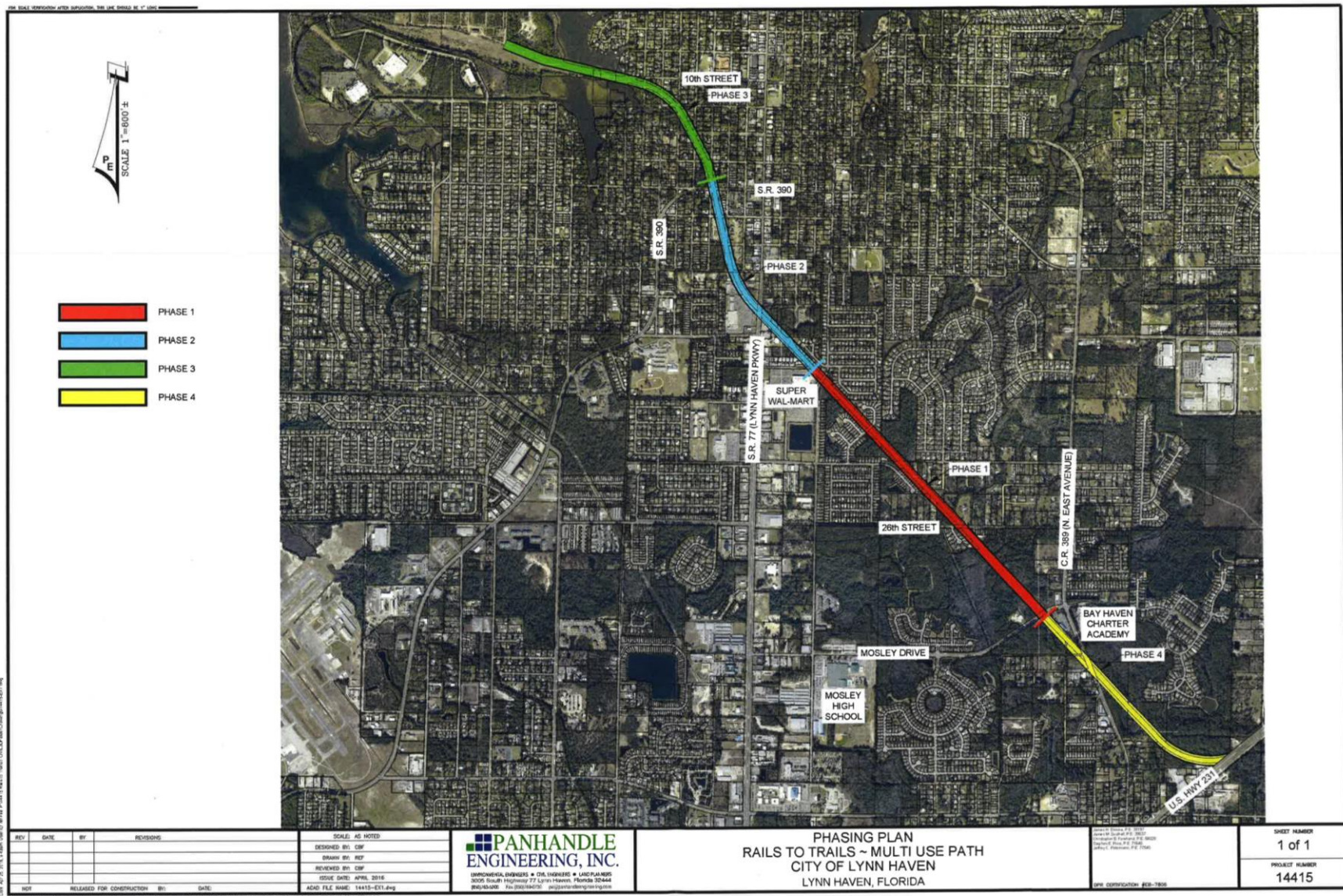
3. Scale for total distance

- 1.2 miles

4. Location within the region

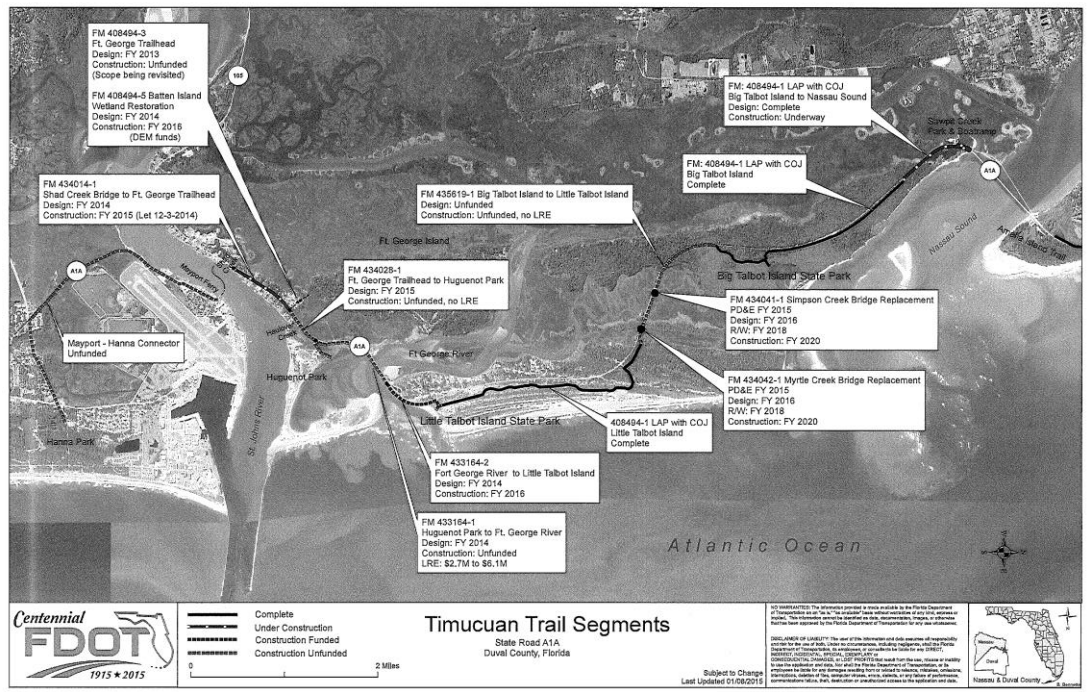
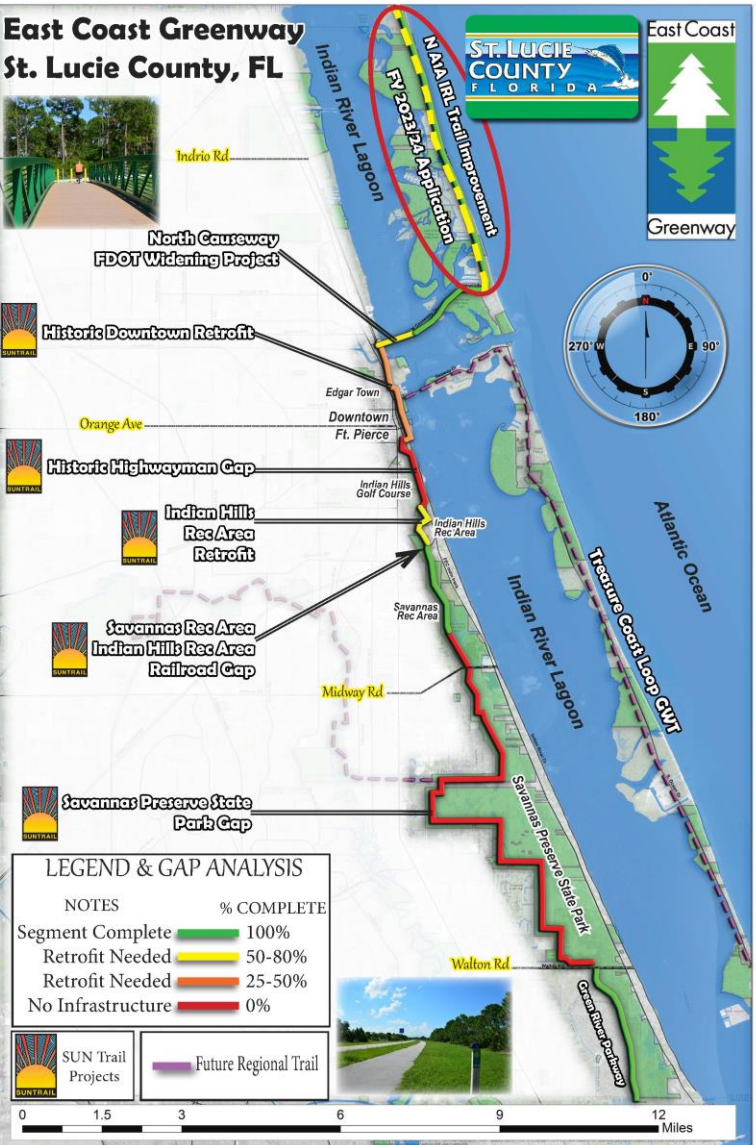
5. North arrow

Example Aerial Map of Project Location from Previous Year



Helps us to understand the project for funding “manageable” phases

Example Vicinity/Project Location Maps Received in Prior Year



Includes:

1. Project Name
2. Project Limits
3. Vicinity
4. Scale for total distance
5. Location within the region
6. North arrow
7. Connectivity within the network to other facilities, resources and investments

Example Vicinity/Project Location Maps Received in Prior Year



The Proposed Pinellas Trail Loop with missing gap locations (shown in Red)



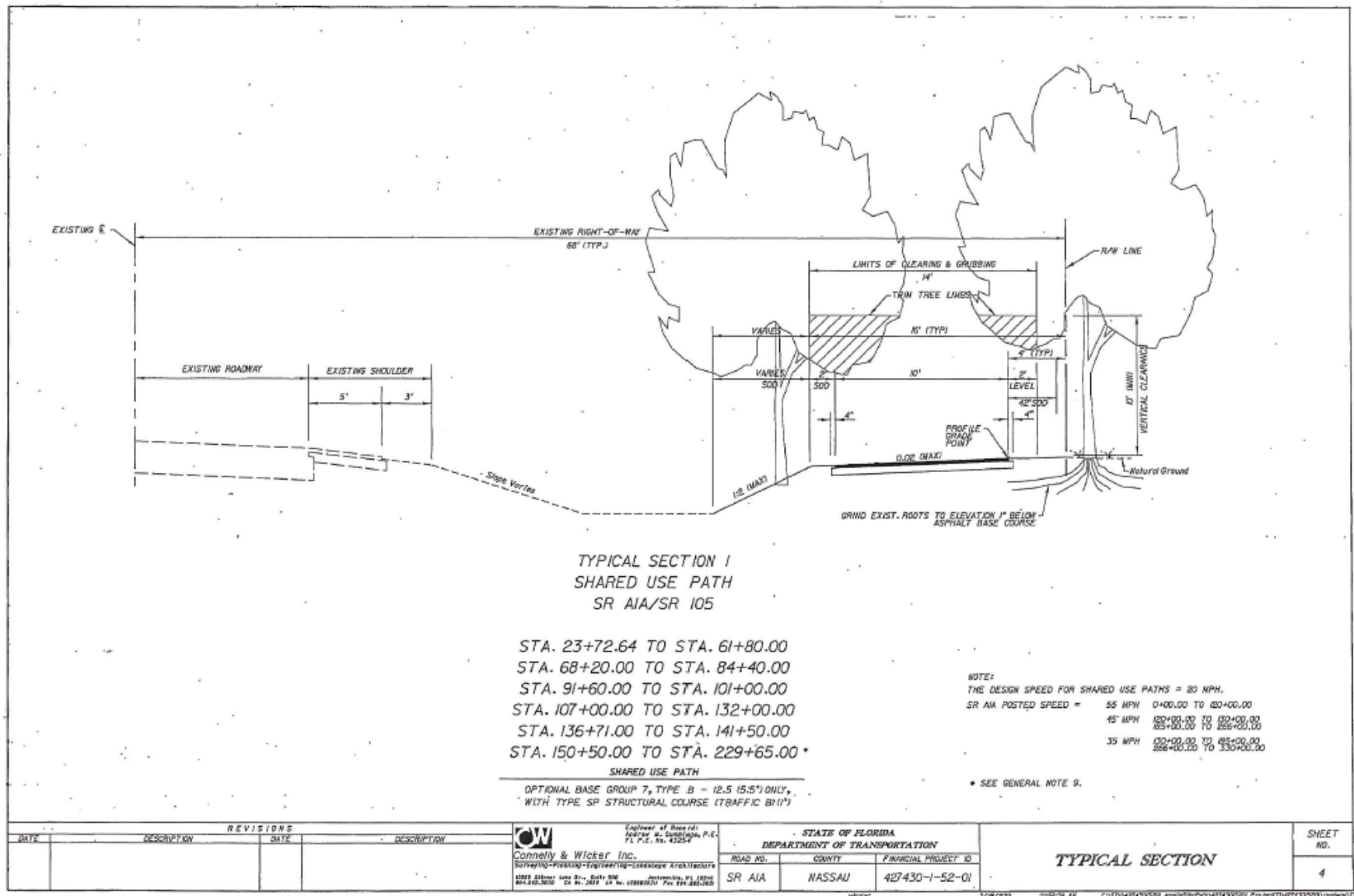
TBARTA - 2040 and Longer Range Regional Multi-Use Trail Projects



Forward Pinellas (formerly Pinellas Planning Council) - Countywide Strategies Transit Orient Development Map

Their transit map helps demonstrate Part VI-#6.

Example Typical Cross Sections Received in Prior Year



Mapping Tools for the SUN Trail Network

FDOT Florida Department of TRANSPORTATION

E-Updates | FL511 | Site Map
Search FDOT...

Home About FDOT Contact Us Maps & Data Offices Performance Projects

Systems Implementation Office

Systems Implementation Office / Office Divisions / SUN Trail Program

Shared-Use Nonmotorized (SUN) Trail Program

Authorization & Statutes
Contacts
Florida Greenway and Trails System Plan
Meetings & Events

News
Plans & Projects
Program Guidance
Other Resources

SUN Trail Mapping Information

Systems Implementation Office

Contact Us Employment MyFlorida.com Performance Statement of Agency Web Policies & Notices

© 1996 - 2019 Florida Department of Transportation

Florida Department of Transportation
Safety, Mobility, Reliability

FDOT Florida Department of TRANSPORTATION

E-Updates | FL511 | Mobile | Site Map
Search FDOT...

Home About FDOT Contact Us Maps & Data Offices Performance

Systems Implementation Office

Systems Implementation Office / Office Division / SUN Trail Program / SUN Trail Mapping Information

SUN Trail Mapping Information

SUN Trail Statewide Network Mapping

- SUN Trail Statewide Network (PDF Version)
- SUN Trail Statewide Network Shapefiles
- **SUN Trail Statewide Network (ArcGIS Online Version)**
- SUN Trail Statewide Network KMZ files
(NOTE: Google Earth must be installed on your PC prior to opening the SUN Trail Statewide Network KMZ file.)

DISCLAIMER:
No Warranties: This map and its content is made available by the Florida Department of Transportation (FDOT) on an "as is, as available" basis without warranties of any kind, express or implied. This product is for reference purposes only and is not to be construed as a legal document or survey instrument. Information is subject to change.

Disclaimer of Liability: The user of this map and data assumes all responsibility and risk for the use of both. Under no circumstances, including negligence, shall the FDOT or its employees be liable for any direct, indirect, incidental, special, exemplary or consequential damages, or lost profits that result from the use, misuse or inability to use the map and data. Additional trail information may be obtained by contacting your local government.

SUN Trail Regional Systems

- Coast to Coast Trail Connector
- St. Johns River-to-Sea Loop

Contact Us Employment MyFlorida.com Performance Statement of Agency Web Policies & Notices

© 1996 - 2018 Florida Department of Transportation

Florida Department of Transportation
Innovative, Efficient and Exceptional

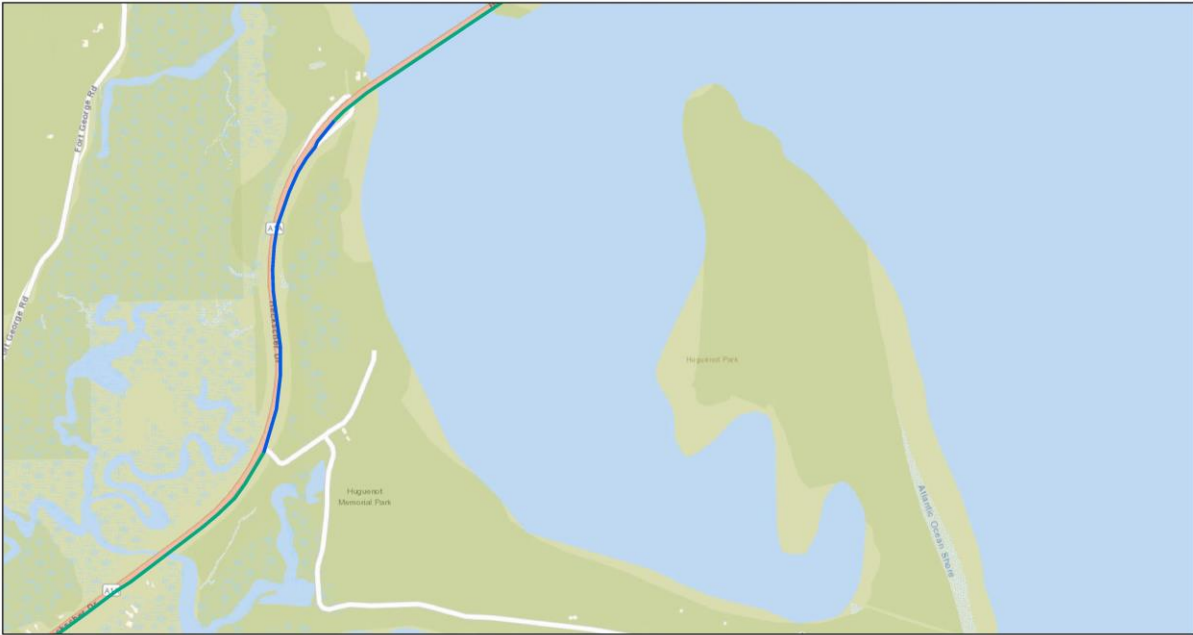
3 mapping tools

Select Location, Layers, Style of Base Map, add Legend...

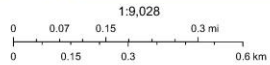
The screenshot displays a web-based GIS application interface. At the top, a search bar contains the text "Huguenot Park, Jacksonville, FL". Below the search bar, a map shows a satellite view of a coastal area with a blue and green trail network overlaid. The map includes labels for "Fort George Island" and "Huguenot Memorial Park". On the right side, there are two panels: "Layers" and "Basemap gallery". The "Layers" panel has a checked box for "SUN Trail Network" and a checked box for "World Topographic Map". The "Basemap gallery" panel has a checked box for "Topographic". Yellow arrows point to the search bar, the layers panel, and the basemap gallery. The bottom of the map shows the text "POWERED BY esri Florida Department of Environmental Protection, Office of Greenways & Trails Systems Planning Office - Florida Department of Transportation Tran..."

Create Printable Maps

Duval_D2_Timucuan Trail to Huguenot Park



September 9, 2019
 SUN Trail Network
 — EXISTING
 — PARTIALLY FUNDED FOR PRE-CONST

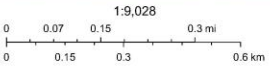


Sources: Esri, HERE, Garmin, USGS, Intermap, INCREMENT P, NRCan, Esri Japan, METI, Esri China (Hong Kong), Esri Korea, Esri (Thailand), NGCC, (c) OpenStreetMap contributors, and the GIS User Community, Sources: Esri, HERE, Garmin, Intermap, increment

Duval_D2_Timucuan Trail to Huguenot Park



September 9, 2019
 SUN Trail Network
 — EXISTING
 — PROGRAMMED/FUNDED
 — PARTIALLY FUNDED FOR PRE-CONST



Esri, HERE, Garmin, (c) OpenStreetMap contributors, and the GIS user community, Source: Esri, DigitalGlobe, GeoEye, Earthstar Geographics, CNES/Airbus DS, USDA, USGS, AeroGRID, IGN, and the GIS User Community, Sources: Esri, HERE, Garmin, Intermap,

SUN Trail Requests for Funding: Part III and Part VII

Florida Department of Transportation Shared-Use Nonmotorized (SUN) Trail Program
Request for Funding



Regional Trail System and Individual Trail projects **must meet all eligibility criteria** to receive funding consideration by the SUN Trail program. "Requests for Funding" without the required information are ineligible and will not receive funding consideration.

PART III – ELIGIBILITY CRITERIA

1. Funding is limited to geographic areas within the SUN Trail network. Will the project be developed as a paved multi-use trail within the SUN Trail network?
 Yes No
 - a. Provide an aerial location map illustrating the project boundary and project limits.
 - b. Provide a map illustrating the project location within the SUN Trail network.
 - c. Provide the project typical section (this should be a pdf of the typical section schematic depicting existing and proposed features, dimensions, and right-of-way lines).

2. Funding is limited to projects prioritized by the applicable authority. If the project is within a boundary of a Metropolitan/Transportation Planning Organization/Agency (MPO), it must be prioritized by the MPO. Projects outside of an MPO boundary must be identified as a priority of the county (inclusive of their municipalities), tribal government, federal or state agency. Is the project a priority of the applicable authority?
 Yes No
 - a. Indicate the priority number of the project:
 - b. Provide the prioritization list.
 - c. Complete Part VII (CERTIFICATION OF PROJECT PRIORITIZATION).

3. Has a non-FDOT governmental entity formally committed to operation and maintenance of the project (long-term trail manager)?
 Yes No
 - a. Complete Part VIII (CERTIFICATION OF WILLING MANAGER).

4. Is the project consistent with the applicable comprehensive plan(s), transportation plan(s), or the long-term management plan(s)?
 Yes No
 - a. Indicate the type of plan(s), applicable page number(s) and date(s) of adoption:
 - b. Provide documentation of applicable project concurrency information [e.g. supporting resolution(s), excerpt from comprehensive plan(s), transportation plan(s), unit management plans, etc.].

DO NOT PROCEED TO PART IV IF PROJECT RESULTED IN A "NO" RESPONSE IN PART III.

Required to meet the Eligibility Criteria

2. Prioritization Certification

- a. Indicate prioritization number
- b. Provide prioritization list
- c. Complete and sign Part VII



2016/17 List of Priority Projects (LOPP)

Florida Shared-Use Nonmotorized (SUN) Trail Projects

2016/17 Priority Ranking	Project Name	Project Limits		Project Description	Project Sponsor	2015/16 Priority Ranking
		From	To			
1	Savannas Preserve State Park	Green River Parkway	Savannas Recreation Area	Design and construction of paved trail	St. Lucie County	N/A ¹
2	Florida East Coast Railroad Overpass	Savannas Recreation Area	Heathcote Botanical Gardens	Design and construction of railroad overpass	City of Fort Pierce	N/A
3	Historic Downtown Retrofit	2nd Street	North State Route A1A	Installation of bicycle boulevard, roadway section connections, and railroad crossing improvements	St. Lucie County	N/A
4	Historic Highwayman Trail Gap	Indian Hills Golf Course	2nd Street	Design and construction of paved trail and roadway section connections	St. Lucie County	N/A
5	Indian Hills Recreation Area Trail Retrofit	Savannah Road	Indian Hills Golf Course	Paving of existing trails	St. Lucie County	N/A

¹Not Applicable

Transportation Planning for Fort Pierce, Port St. Lucie, St. Lucie Village and St. Lucie County

Prior year example.

SUN Trail Requests for Funding: Part III and Part VIII

Florida Department of Transportation Shared-Use Nonmotorized (SUN) Trail Program Request for Funding



Regional Trail System and Individual Trail projects **must meet all eligibility criteria** to receive funding consideration by the SUN Trail program. "Requests for Funding" without the required information are ineligible and will not receive funding consideration.

PART III – ELIGIBILITY CRITERIA

- Funding is limited to geographic areas within the SUN Trail network. Will the project be developed as a paved multi-use trail within the SUN Trail network?
 Yes No
 - Provide an aerial location map illustrating the project boundary and project limits.
 - Provide a map illustrating the project location within the SUN Trail network.
 - Provide the project typical section (this should be a pdf of the typical section schematic depicting existing and proposed features, dimensions, and right-of-way lines).
- Funding is limited to projects prioritized by the applicable authority. If the project is within a boundary of a Metropolitan/Transportation Planning Organization/Agency (MPO), it must be prioritized by the MPO. Projects outside of an MPO boundary must be identified as a priority of the county (inclusive of their municipalities), tribal government, federal or state agency. Is the project a priority of the applicable authority?
 Yes No
 - Indicate the priority number of the project:
 - Provide the prioritization list.
 - Complete Part VII (CERTIFICATION OF PROJECT PRIORITIZATION).
- Has a non-FDOT governmental entity formally committed to operation and maintenance of the project (long-term trail manager)?
 Yes No
 - Complete Part VIII (CERTIFICATION OF WILLING MANAGER).
- Is the project consistent with the applicable comprehensive plan(s), transportation plan(s), or the long-term management plan(s)?
 Yes No
 - Indicate the type of plan(s), applicable page number(s) and date(s) of adoption:
 - Provide documentation of applicable project concurrency information [e.g. supporting resolution(s), excerpt from comprehensive plan(s), transportation plan(s), unit management plans, etc.].

DO NOT PROCEED TO PART IV IF PROJECT RESULTED IN A "NO" RESPONSE IN PART III.

Required to meet the Eligibility Criteria

3. Willing Manager Certification

a. Complete and sign Part VIII

Prior year example. Note, this year has minor change to formatting.

SUN Trail Requests for Funding: Part III

Florida Department of Transportation Shared-Use Nonmotorized (SUN) Trail Program Request for Funding



Regional Trail System and Individual Trail projects **must meet all eligibility criteria** to receive funding consideration by the SUN Trail program. "Requests for Funding" without the required information are ineligible and will not receive funding consideration.

PART III – ELIGIBILITY CRITERIA

1. Funding is limited to geographic areas within the SUN Trail network. Will the project be developed as a paved multi-use trail within the SUN Trail network?
 Yes No
 - a. Provide an aerial location map illustrating the project boundary and project limits.
 - b. Provide a map illustrating the project location within the SUN Trail network.
 - c. Provide the project typical section (this should be a pdf of the typical section schematic depicting existing and proposed features, dimensions, and right-of-way lines).
2. Funding is limited to projects prioritized by the applicable authority. If the project is within a boundary of a Metropolitan/Transportation Planning Organization/Agency (MPO), it must be prioritized by the MPO. Projects outside of an MPO boundary must be identified as a priority of the county (inclusive of their municipalities), tribal government, federal or state agency. Is the project a priority of the applicable authority?
 Yes No
 - a. Indicate the priority number of the project:
 - b. Provide the prioritization list.
 - c. Complete Part VII (CERTIFICATION OF PROJECT PRIORITIZATION).
3. Has a non-FDOT governmental entity formally committed to operation and maintenance of the project (long-term trail manager)?
 Yes No
 - a. Complete Part VIII (CERTIFICATION OF WILLING MANAGER).
4. Is the project consistent with the applicable comprehensive plan(s), transportation plan(s), or the long-term management plan(s)?
 Yes No
 - a. Indicate the type of plan(s), applicable page number(s) and date(s) of adoption:
 - b. Provide documentation of applicable project concurrency information [e.g. supporting resolution(s), excerpt from comprehensive plan(s), transportation plan(s), unit management plans, etc.].

DO NOT PROCEED TO PART IV IF PROJECT RESULTED IN A "NO" RESPONSE IN PART III.

Required to meet the Eligibility Criteria

4. Plan Compliance

- a. Indicate the type of plan(s), page number and date(s) of adoption
- b. As applicable, provide documentation

Indicate the type of plan(s) and date(s) of adoption.

Connections 2040 Regional Mobility Plan (2015)
Wakulla County Bike, Pedestrian and Blueways Master Plan - (2012)
Blueprint 2000 2020 Projects (2014)
Tallahassee Leon County Greenways Master Plan (2015)
Socioeconomic Analysis and Location Study for the Gopher, Frog, and Alligator Rail Trail (1994)
Panacea Waterfronts Florida Community: A Work Plan for a Walkable Community (2003)
Southwood Community Plan Sportspark and Trails Plan (2005)
City of Tallahassee Parks and Recreation Master Plan (2007)
Wakulla County Community and Economic Development Plan (2007)
Big Bend Maritime Center (2007 Strategic Plan)
Preserving and Expanding the Genuine St. Marks Experience (2008)
Plan St. Marks (2008)
FSU Master Plan: Main Campus (2010)
CRTPA Regional Mobility Plan (2010)
Wakulla County Evaluation and Appraisal Report (EAR) (2010)
Crawfordville Sector Plan (2011)
Crawfordville Town Plan (2011)
City of Tallahassee Trail Connections Study (2011)
The Woodville Highway Corridor Study (2011)
Tallahassee to St. Marks Trail Extension (2011)
Big Bend Scenic Byway Corridor Management Plan (2011 update)
FAMU Master Plan (2012)
Wakulla County Adopted Infrastructure Plan (2012)
Tallahassee-Leon County Comprehensive Plan (2013)
Wakulla County Comprehensive Plan (2013)
Florida Greenways and Trails System Plan (2015)

Prior year example. Note, this year has minor change to formatting.

SUN Trail Requests for Funding: Part IV

Florida Department of Transportation Shared-Use Nonmotorized (SUN) Trail Program
Request for Funding



PART IV – PROJECT DETAILS

1. Project Tier:
 - a. Is the project within the Coast to Coast Trail (C2C)?
 Yes No
 - b. Is the project within the St. Johns River-to-Sea Loop (SJR2C)?
 Yes No
 - c. Is the project an Individual Trail segment?
 Yes No
2. Will the project be developed as a 12-foot-wide asphalt trail?
 Yes No
3. Briefly describe the scope and proposed route of the project (1000-character limit):
4. Have earlier phase(s) of this project been completed? If not, select "no" and continue to Question 5.
 Yes No
 - a. Select all project phases that were previously funded, indicate the funding year and completion date (or anticipated completion date for the funded phase).
 - Feasibility Study
 - Project Development & Environment (PDE)
 - Preliminary Engineering/Design (PE)
 - Acquisition of right-of-way (ROW)
 - Construction (CON)* only select for reconstruction/maintenance projects
 - b. Have federal funds been used in the project boundary?
 Yes No
 - c. As applicable, indicate the source of the federal allocation(s).
 - d. Have FDOT funds been used in the project boundary?
 Yes No
 - e. As applicable, indicate FDOT financial management number(s).
5. Indicate the proposed method of performing and administering this project:
 - Project to be locally administered (non-FDOT administered).
 - Project to be administered by FDOT.

1. Project Tier

- It is possible that a project could be both Coast to Coast (C2C) and St. Johns River-to-Sea Loop (SJR2C)
- Projects that are classified as C2C or SJR2C are not classified as an Individual Trail
- Use “SUN Trail Mapping Information”:
<http://www.fdot.gov/planning/systems/SUNTrail/maps.shtm>

SUN Trail Requests for Funding: Part IV continued

Florida Department of Transportation Shared-Use Nonmotorized (SUN) Trail Program
Request for Funding



PART IV – PROJECT DETAILS

1. Project Tier:
 - a. Is the project within the Coast to Coast Trail (C2C)?
 Yes No
 - b. Is the project within the St. Johns River-to-Sea Loop (SJR2C)?
 Yes No
 - c. Is the project an Individual Trail segment?
 Yes No
2. Will the project be developed as a 12-foot-wide asphalt trail?
 Yes No
3. Briefly describe the scope and proposed route of the project (1000-character limit):
4. Have earlier phase(s) of this project been completed? If not, select "no" and continue to Question 5.
 Yes No
 - a. Select all project phases that were previously funded, indicate the funding year and completion date (or anticipated completion date for the funded phase).
 - Feasibility Study
 - Project Development & Environment (PDE)
 - Preliminary Engineering/Design (PE)
 - Acquisition of right-of-way (ROW)
 - Construction (CON)* only select for reconstruction/maintenance projects
 - b. Have federal funds been used in the project boundary?
 Yes No
 - c. As applicable, indicate the source of the federal allocation(s).
 - d. Have FDOT funds been used in the project boundary?
 Yes No
 - e. As applicable, indicate FDOT financial management number(s).
5. Indicate the **proposed** method of performing and administering this project:
 - Project to be locally administered (non-FDOT administered).
 - Project to be administered by FDOT.

2. Width and design requirements

- In general projects in the SUN Trail network should be planned as 12-foot wide. Provide justification and backup documentation when a project will not meet the 12-foot-design criteria.
- Projects in FDOTs Right-of-Way (ROW) must follow:
 - Florida Design Manual (FDM) design criteria:
<https://www.fdot.gov/roadway/fdm/Default.shtm> and
 - FDOTs Standard Plans and Specifications:
<https://www.fdot.gov/design/standardplans/Default.shtm>
- Projects located along non-FDOT owned ROW follows design criteria found in the Manual of Uniform Minimum Standards for Design, Construction and Maintenance for Streets and Highways (Florida Greenbook):
<http://www.fdot.gov/roadway/FloridaGreenbook/FGB.shtm>
- At times the combination of funds used for a project, nature of work, or location along federally classified routes (such as the National Highway System) may trigger additional design requirements.
- The Manual of Uniform Traffic Control Devices (MUTCD) 2009 edition with Revisions 1 and 2, May 2012 applies to SUN Trail projects:
https://mutcd.fhwa.dot.gov/pdfs/2009r1r2/pdf_index.htm.
- FDOTs Traffic Engineering Manual (TEM) contains additional requirements for traffic control devices along the state highway system:
<https://www.fdot.gov/traffic/TrafficServices/Studies/TEM/TEM.shtm>

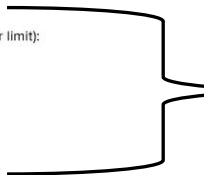
SUN Trail Requests for Funding: Part IV continued

3. Scope (1000 words or less)

Florida Department of Transportation Shared-Use Nonmotorized (SUN) Trail Program
Request for Funding



PART IV – PROJECT DETAILS

1. Project Tier:
 - a. Is the project within the Coast to Coast Trail (C2C)?
 Yes No
 - b. Is the project within the St. Johns River-to-Sea Loop (SJR2C)?
 Yes No
 - c. Is the project an Individual Trail segment?
 Yes No
2. Will the project be developed as a 12-foot-wide asphalt trail?
 Yes No
3. Briefly describe the scope and proposed route of the project (1000-character limit):

4. Have earlier phase(s) of this project been completed? If not, select "no" and continue to Question 5.
 Yes No
 - a. Select all project phases that were previously funded, indicate the funding year and completion date (or anticipated completion date for the funded phase).
 - Feasibility Study
 - Project Development & Environment (PDE)
 - Preliminary Engineering/Design (PE)
 - Acquisition of right-of-way (ROW)
 - Construction (CON)* only select for reconstruction/maintenance projects
 - b. Have federal funds been used in the project boundary?
 Yes No
 - c. As applicable, indicate the source of the federal allocation(s).
 - d. Have FDOT funds been used in the project boundary?
 Yes No
 - e. As applicable, indicate FDOT financial management number(s).
5. Indicate the proposed method of performing and administering this project:
 - Project to be locally administered (non-FDOT administered).
 - Project to be administered by FDOT.

Prior year examples

Briefly describe the scope of the project: The proposed project consists of an extension to existing trail in Gayles' Trails. The project will begin at Breakfast Point Subdivision, it will continue behind Arnold High School then to the Holiday Golf Course where it will then connect to the future Trieste Trail.

Briefly describe the scope of the project: **Design and construction of a 12'-foot wide Multi Use trail on the north side of Kismet Parkway from El Dorado Boulevard to Del Prado Boulevard; on the west side of El Dorado Boulevard from Van Buren Parkway to Kismet Parkway; and on the north side of Van Buren Parkway from Burnt Store Road to El Dorado Boulevard. Please See Location Maps in Exhibits A-1 and A-2. The cross section of the roadway segments where the multiuse trail is proposed have open drainage system may require some drainage modifications in order to accommodate the 12'-foot trail. Project will include pedestrian bridges across three (3) canal crossings.**

Briefly describe the scope of the project: The Timucuan Trail is a +/-16.5-mile off-road 10' – 12' asphalt multi-use trail which has been designated as a destination component of the National East Coast Greenway and which connects Kathryn Abbey Hanna Park, Ft. George Island/Kingsley Plantation/Ribault Club, Huguenot Park, Little/Big Talbot Islands State Parks, Bluffs Picnic Area, George Crady State Park, Amelia Island State Park, and numerous other recreational points-of-interest along the alignment. The trail is located within northeastern Duval County and southeastern Nassau County entirely on State- owned or controlled lands. The Trail is bisected by the St Johns River, connection is via the St Johns River Ferry. Funding is requested to construct the remaining portions of the Timucuan Trail currently in DOT's work program which are the Little Talbot Island to Big Talbot Island segment (construction only, \$1.6M); the Huguenot Park to Ft George River segment (construction only, \$8.7M) ; and the Ft George Trailhead to Huguenot Park segment (construction only, \$3.2M). We are also requesting that the Mayoport/Hanna segment that will connect Hanna Park to the Timucuan Trail be studied and constructed as part of this trail system (PE, \$360,000; construction, \$3.6M).

SUN Trail Requests for Funding: Part IV continued

Florida Department of Transportation Shared-Use Nonmotorized (SUN) Trail Program
Request for Funding



PART IV – PROJECT DETAILS

1. Project Tier:
 - a. Is the project within the Coast to Coast Trail (C2C)?
 Yes No
 - b. Is the project within the St. Johns River-to-Sea Loop (SJR2C)?
 Yes No
 - c. Is the project an Individual Trail segment?
 Yes No
2. Will the project be developed as a 12-foot-wide asphalt trail?
 Yes No
3. Briefly describe the scope and proposed route of the project (1000-character limit):
4. Have earlier phase(s) of this project been completed? If not, select "no" and continue to Question 5.
 Yes No
 - a. Select all project phases that were previously funded, indicate the funding year and completion date (or anticipated completion date for the funded phase).
 - Feasibility Study
 - Project Development & Environment (PDE)
 - Preliminary Engineering/Design (PE)
 - Acquisition of right-of-way (ROW)
 - Construction (CON)* only select for reconstruction/maintenance projects
 - b. Have federal funds been used in the project boundary?
 Yes No
 - c. As applicable, indicate the source of the federal allocation(s).
 - d. Have FDOT funds been used in the project boundary?
 Yes No
 - e. As applicable, indicate FDOT financial management number(s).
5. Indicate the proposed method of performing and administering this project:
 - Project to be locally administered (non-FDOT administered).
 - Project to be administered by FDOT.

4. Previous project phases and investments

- a. Indicate phases that were previously funded and indicate the completion date/anticipated completion date/funding year; construction should only be selected for projects proposing new construction, reconstruction or maintenance.
- b. If federal funds have been used or contemplated for use in the project boundary, the project is federalized. All future phases must adhere to federal requirements.
- c. Indicate the source of the federal allocation (e.g. Transportation Enhancements, Recreational Trails Program, Land and Water Conservation Fund, etc.).
- d. If FDOT funds have been used in the project boundary a similar naming conventions should be used for this project.
- e. If FDOT funds have been used in the project boundary there will be a financial management number, please provide it.

SUN Trail Requests for Funding: Part IV continued

Florida Department of Transportation Shared-Use Nonmotorized (SUN) Trail Program

Request for Funding



PART IV – PROJECT DETAILS

1. Project Tier:
 - a. Is the project within the Coast to Coast Trail (C2C)?
 Yes No
 - b. Is the project within the St. Johns River-to-Sea Loop (SJR2C)?
 Yes No
 - c. Is the project an Individual Trail segment?
 Yes No
2. Will the project be developed as a 12-foot-wide asphalt trail?
 Yes No
3. Briefly describe the scope and proposed route of the project (1000-character limit):
4. Have earlier phase(s) of this project been completed? If not, select "no" and continue to Question 5.
 Yes No
 - a. Select all project phases that were previously funded, indicate the funding year and completion date (or anticipated completion date for the funded phase).
 - Feasibility Study
 - Project Development & Environment (PDE)
 - Preliminary Engineering/Design (PE)
 - Acquisition of right-of-way (ROW)
 - Construction (CON)* only select for reconstruction/maintenance projects
 - b. Have federal funds been used in the project boundary?
 Yes No
 - c. As applicable, indicate the source of the federal allocation(s).
 - d. Have FDOT funds been used in the project boundary?
 Yes No
 - e. As applicable, indicate FDOT financial management number(s).
5. Indicate the proposed method of performing and administering this project:
 - Project to be locally administered (non-FDOT administered).
 - Project to be administered by FDOT.

5. When FDOT is the proposed project administrator call the district Trail Coordinator and discuss.

SUN Trail Requests for Funding: Part V

Florida Department of Transportation Shared-Use Nonmotorized (SUN) Trail Program

Request for Funding

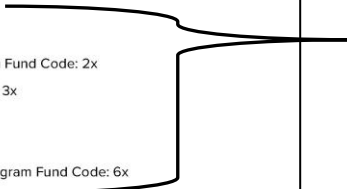


A responsible estimate of the project costs is required prior to adoption in the Department's Five-Year Work Program. Use Present Day Cost values. Projects must follow appropriate design criteria and meet Americans with Disabilities Act requirements. Fill out summary of proposed timeline and funding new needs, then complete Engineer's Cost Estimate spreadsheet and provide it with the "Funding Request".

PART V – PROJECT COSTS

1. Funding Phase(s) requested:

- Feasibility Study (FS) – FDOT Work Program Fund Code: 1x
- Project Development & Environment Study (PDE) – FDOT Work Program Fund Code: 2x
- Preliminary Engineering/Design (PE) – FDOT Work Program Fund Code: 3x
- Acquisition of right-of-way (ROW) – FDOT Work Program Fund Code: 4x
- Construction (CON) – FDOT Work Program Fund Code: 5x
- Construction Engineering & Inspection Activities (CEI) – FDOT Work Program Fund Code: 6x



2. Summary of proposed timeline and funding needs:

PHASE	PROPOSED YEAR(S)	AMOUNT(S) REQUESTED	MATCHING FUNDS	TOTAL PROJECT COSTS	SOURCE(S) OF OTHER FUNDS
FS					
PDE					
PE					
ROW					
CON					
CEI					
TOTAL					

3. Provide the [Excel Engineer's Cost Estimate spreadsheet](#). Estimates shall be broken down to eligible and non-eligible project costs. *Estimates are to be prepared and signed by a Professional Engineer from Agency's Engineering Office.*

Use the following links to access the basis of estimates manual, as well as historical cost information, and the Reference Guide for State Expenditures for the project area:

[Basis of Estimates Manual](#)

[Historical Cost Information](#)

[Reference Guide for State Expenditures](#)

1. Indicate phases proposed for funding

Florida Statue requires a reasonable estimate of the project cost prior to adoption in the Department's Five Year Work Program. Use **Present Day Cost** values. Projects must follow appropriate design criteria and meet Americans with Disabilities Act requirements. If necessary, attach a separate spreadsheet.

Funding Phase(s) requested:

- Feasibility Study (FS)
- Preliminary Engineering/Design (PE)
- Project Development & Environment (PD&E)
- Acquisition of right-of-way (ROW)
- Construction (CON)
- Construction Engineering & Inspection Activities (CEI)

Briefly describe any project work phases that are underway or completed.

The Biscayne Trail currently has work phases underway and completed. The design phase of Biscayne Trail Segment D Phase 1 from SW 328th Street to SW 117th Avenue is underway. Construction of Phase 1 is anticipated to be completed by 2018. Biscayne Trail work phases which have been completed include: Conceptual Master Plan in 2008, the Project Development and Environmental (PD&E) Study for Biscayne Trail Segment C and D February, 2010, Bridge B near SW 328th Street and L-31E Canal in 2014, and a 500 linear feet segment of the trail by the City of Homestead in 2014.

Design funding for the scope outlined in the proposed Biscayne Trail Segment C and D was the subject of the Florida Department of Transportation (FDOT), Transportation Enhancements Program Application, awarded to Miami-Dade County, Parks, Recreation and Open Spaces Department in 2005.

Exhibit 5 - Biscayne-Everglades Preferred Corridor Plan

Exhibit 6 - FDOT Environmental Certification

Exhibit 7 - Biscayne Trail Bridge B Rendering

Prior year example. Note, this year has minor change to formatting.

SUN Trail Requests for Funding: Part V continued

Florida Department of Transportation Shared-Use Nonmotorized (SUN) Trail Program Request for Funding



A responsible estimate of the project costs is required prior to adoption in the Department's Five-Year Work Program. Use Present Day Cost values. Projects must follow appropriate design criteria and meet Americans with Disabilities Act requirements. Fill out summary of proposed timeline and funding new needs, then complete Engineer's Cost Estimate spreadsheet and provide it with the "Funding Request".

PART V – PROJECT COSTS

1. Funding Phase(s) requested:

- Feasibility Study (FS) – FDOT Work Program Fund Code: 1x
- Project Development & Environment Study (PDE) – FDOT Work Program Fund Code: 2x
- Preliminary Engineering/Design (PE) – FDOT Work Program Fund Code: 3x
- Acquisition of right-of-way (ROW) – FDOT Work Program Fund Code: 4x
- Construction (CON) – FDOT Work Program Fund Code: 5x
- Construction Engineering & Inspection Activities (CEI) – FDOT Work Program Fund Code: 6x

2. Summary of proposed timeline and funding needs:

PHASE	PROPOSED YEAR(S)	AMOUNT(S) REQUESTED	MATCHING FUNDS	TOTAL PROJECT COSTS	SOURCE(S) OF OTHER FUNDS
FS					
PDE					
PE					
ROW					
CON					
CEI					
TOTAL					

3. Provide the [Excel Engineer's Cost Estimate spreadsheet](#). Estimates shall be broken down to eligible and non-eligible project costs. *Estimates are to be prepared and signed by a Professional Engineer from Agency's Engineering Office.*

Use the following links to access the basis of estimates manual, as well as historical cost information, and the Reference Guide for State Expenditures for the project area:

[Basis of Estimates Manual](#)

[Historical Cost Information](#)

[Reference Guide for State Expenditures](#)

2. Complete summary table of the proposed timeline and funding needs

- a. The "proposed year" is the earliest year the phase is ready for funding.
- b. Use Present Day Cost values when inputting values.
- c. Provide funding costs for eligible project attributes, do not include ineligible expenditures. See:
 - a. FDOT Work Program Instructions: <https://www.fdot.gov/workprogram/development/wp-instructions.shtm>
 - b. Florida Department of Financial Services Catalog of State Financial Assistance (CSFA) [Number 55.038](#)
- d. Indicate match when funds are available (also include in Part VI, #3).
- e. Include matching funds if project attributes exceed the general 12-foot wide asphalt trail (e.g. concrete) design.
- f. Projects within FDOT right-of-way must utilize FDOT pay item numbers and descriptions. Access the basis of estimates manual as well as historical cost information for the project area: [Basis of Estimates Manual](#), [Historical Cost Information](#), [Reference Guide for State Expenditures](#)

SUN Trail Requests for Funding: Part V continued

Florida Department of Transportation Shared-Use Nonmotorized (SUN) Trail Program Request for Funding



A responsible estimate of the project costs is required prior to adoption in the Department's Five-Year Work Program. Use Present Day Cost values. Projects must follow appropriate design criteria and meet Americans with Disabilities Act requirements. Fill out summary of proposed timeline and funding new needs, then complete Engineer's Cost Estimate spreadsheet and provide it with the "Funding Request".

PART V – PROJECT COSTS

1. Funding Phase(s) requested:

- Feasibility Study (FS) – FDOT Work Program Fund Code: 1x
- Project Development & Environment Study (PDE) – FDOT Work Program Fund Code: 2x
- Preliminary Engineering/Design (PE) – FDOT Work Program Fund Code: 3x
- Acquisition of right-of-way (ROW) – FDOT Work Program Fund Code: 4x
- Construction (CON) – FDOT Work Program Fund Code: 5x
- Construction Engineering & Inspection Activities (CEI) – FDOT Work Program Fund Code: 6x

2. Summary of proposed timeline and funding needs:

PHASE	PROPOSED YEAR(S)	AMOUNT(S) REQUESTED	MATCHING FUNDS	TOTAL PROJECT COSTS	SOURCE(S) OF OTHER FUNDS
FS					
PDE					
PE					
ROW					
CON					
CEI					
TOTAL					

3. Provide the Excel Engineer's Cost Estimate spreadsheet. Estimates shall be broken down to eligible and non-eligible project costs. Estimates are to be prepared and signed by a Professional Engineer from Agency's Engineering Office.

Use the following links to access the basis of estimates manual, as well as historical cost information, and the Reference Guide for State Expenditures for the project area:

[Basis of Estimates Manual](#)

[Historical Cost Information](#)

[Reference Guide for State Expenditures](#)

3. Provide the Engineers Cost Estimate (Excel Spreadsheet) prepared and signed by a Professional Engineer

“Engineers’ Cost Estimate” Excel Spreadsheet is available

- SUN Trail website:

<https://www.fdot.gov/planning/systems/SUNTrail/guidance.shtm> or

- Grant Application Process (GAP – online system):

<https://www.flgap.com/>

ENGINEER'S COST ESTIMATE SPREADSHEET											
FM# 123456-X-XX-XX											
Project Title: BI-COUNTY (ORANGE BELT) PHASE 1 - STARKEY GAP TRAIL @ TRINITY BLVD TO SR 54											
Date: 3/05/2018											
Pay Item Number*	Pay Item Description*	Quantity	Unit	SUN Trail Funds Requested		Other Funds		Quantity	Unit	Engineer's Subtotal Cost	Source(s) of Match
				Engineer's Unit Cost	Engineer's Subtotal Cost	Engineer's Unit Cost	Engineer's Subtotal Cost				
101-1	Mobilization	1	LS	\$ 552,331.00	\$ 552,331.00					\$ -	
102-1	MAINTENANCE OF TRAFFIC	1	LS	\$ 278,166.00	\$ 278,166.00					\$ -	
104-10-3	SEDIMENT BARRIER - STAKED SILT FENCE	17400	LF	\$ 2.00	\$ 34,800.00			17400		\$ -	
104-11	FLOATING TURBIDITY BARRIER	1500	LF	\$ 8.00	\$ 12,000.00			1500		\$ -	
104-18	INLET PROTECTION SYSTEM	15	EA	\$ 70.00	\$ 1,050.00			15		\$ -	
110-1-1	CLEARING & GRUBBING	1	LS	\$ 5,000.00	\$ 5,000.00			1		\$ -	
110-4	REMOVAL OF EXISTING CONCRETE	430	SY	\$ 16.00	\$ 6,880.00			430		\$ -	
120-1	REGULAR EXCAVATION	5000	CY	\$ 5.50	\$ 27,500.00			5000		\$ -	
120-6	EMBANKMENT	3200	CY	\$ 9.00	\$ 28,800.00			3200		\$ -	
150-4	TYPE B STABILIZATION 12" LBR 40	30500	SY	\$ 4.20	\$ 128,100.00			30500		\$ -	
265-701	OPTIONAL BASE GROUP 1 SOIL CEMENT OR ABC	30500	SY	\$ 15.00	\$ 457,500.00			30500		\$ -	
334-1-11	SUPERPAVE ASPHALT CONC SP 9.5 TRAFFIC A	1600	TON	\$ 110.00	\$ 176,000.00			1600		\$ -	
399-1	MISC ASPHALT PAVEMENT	4	TON	\$ 170.00	\$ 680.00			4		\$ -	
400-B	PRECAST CONC DECK/GRIP/TILE (BOARDWALK)	8800	SF	\$ 180.00	\$ 1,584,000.00			8800		\$ -	
400-S-11	CLASS II CONCRETE CURB/GRAVITY WALL BOH I	34	CY	\$ 500.00	\$ 17,000.00			34		\$ -	
400-1-1	CONCRETE CLASS I MISC	10	CY	\$ 430.00	\$ 4,300.00			10		\$ -	
430-175-124	PIPE CULVERT OPT MATL RD 24" SID	160	LF	\$ 80.00	\$ 12,800.00			160		\$ -	
430-084-129	MITERED END SECTION OPT RD 24" SD	6	EA	\$ 1,600.00	\$ 9,600.00			6		\$ -	
515-1-2	PIPE HANDRAIL - GUARDRAIL ALUM 42"	240	LF	\$ 28.00	\$ 6,720.00			240		\$ -	
515-2-202	PEDESTAL SIGN ALUM 36" PICKET RAIL	880	LF	\$ 150.00	\$ 132,000.00			880		\$ -	
600-1-10	CONC CURB & GUTTER TYPE II (INCLUDE DITCH)	140	LF	\$ 19.00	\$ 2,660.00			140		\$ -	
622-1	CONCRETE SIDEWALK 4" THICK	230	SY	\$ 30.00	\$ 6,900.00			230		\$ -	
622-2	CONCRETE SIDEWALK AND DRIVEWAYS 8" THICK	150	SY	\$ 39.00	\$ 5,850.00			150		\$ -	
622-3	BUS REST PAD SW CONC 8" THICK W/RENCH (3)	40	SY	\$ 85.00	\$ 3,400.00			40		\$ -	
627-2	DETECTABLE WARNING	160	SF	\$ 29.00	\$ 4,640.00			160		\$ -	
670-2	PERFORMANCE SURF SOD	10400	SY	\$ 2.50	\$ 26,000.00			10400		\$ -	
690-2-11	CONDUIT F81 OPEN TRENCH	150	LF	\$ 10.00	\$ 1,500.00			150		\$ -	
690-2-12	CONDUIT F81 DIRECTIONAL BORE	300	LF	\$ 15.00	\$ 4,500.00			300		\$ -	
695-2-11	PULL & SPLICE BOX F81 12" X 24" COVER SIZE	5	EA	\$ 480.00	\$ 2,400.00			5		\$ -	
646-1-31	ALUMINUM SINGLE POLE PEDestal INSTALL	5	AS	\$ 850.00	\$ 4,250.00			5		\$ -	
663-1-01	SINGLE POST STRAIN 1/4" (1/2) COUNTERDRY	5	AS	\$ 650.00	\$ 3,250.00			5		\$ -	
665-1-3	DETECTOR PEDESTRIAN F81 DETECTOR SIGN (W/SIGN)	5	AS	\$ 150.00	\$ 750.00			5		\$ -	
700-1-11	SINGLE POST SIGN F81 LESS THAN 12 SF	4	AS	\$ 345.00	\$ 1,380.00			4		\$ -	
700-20-40	SINGLE POST SIGN RELOCATE	1	AS	\$ 225.00	\$ 225.00			1		\$ -	
700-20-60	SINGLE POST SIGN REMOVE EXISTING	4	AS	\$ 125.00	\$ 500.00			4		\$ -	
700-3-1	SIGN PANEL F81 LESS THAN 12 SF	2	AS	\$ 50.00	\$ 100.00			2		\$ -	
711-1-1-125	THERMOPLASTIC STANDARD WHITE SOLID 12"	240	LF	\$ 1.80	\$ 432.00			240		\$ -	
711-1-1-125	THERMOPLASTIC STANDARD WHITE SOLID 24"	480	LF	\$ 3.50	\$ 1,680.00			480		\$ -	
711-1-17	THERMOPLASTIC REMOVE	30	SF	\$ 10.00	\$ 300.00			30		\$ -	
1000-1	NIDES PERMITS	1	LS	\$ 2,000.00	\$ 2,000.00			1		\$ -	

SPREADSHEET
XX
KEY GAP TRAIL @ TRINITY BLVD TO SR 54

Fs Subtotal Cost	Other Funds				Total Quantity	Total Engineer's Cost
	Quantity	Unit	Engineer's Unit Cost	Source(s) of Match		
3,000.00					1	\$ 3,000.00
3,000.00					1	\$ 3,000.00
3,000.00					1	\$ 3,000.00
3,000.00					1	\$ 3,000.00
3,000.00					2	\$ 6,000.00
3,000.00					2	\$ 6,000.00
3,200.00					4	\$ 12,000.00
3,990,154.00					Subtotal	\$ 3,990,154.00

Cost values. Projects must follow appropriate design criteria and meet Americans with Disabilities Act
Engineer from Agency's Engineering Office.

By: PE Number: 48216
Date: 3-12-18

Signature: _____ Date: _____

Prior year example, may include items ineligible for reimbursement—ideally these are not included in submittal.

SUN Trail Requests for Funding: Part VI

Projects are not required to meet all Selection Criteria

Florida Department of Transportation Shared-Use Nonmotorized (SUN) Trail Program
Request for Funding



Projects are not required to meet all of the following selection criteria, a numerical ranking will not be calculated, projects with the greatest strengths will advance more quickly.

PART VI – SELECTION CRITERIA

1. Does the project enhance the safety of bicyclists, pedestrians, and motorists?
 Yes No

If yes, check applicable attributes and briefly describe how the project meets the selection criteria.

- Project includes a safety element.
- The location of the project is within a hazardous biking/walking zone or in an area with significant numbers of safety concerns.
- Project implements a bicycle and pedestrian safety action plan. Give the name of the plan and date of adoption.
- Other (list)

Briefly describe how the project enhances the safety of bicyclists, pedestrians and motorists. (1000-character limit):

2. Is the project recognized as having regional, state, or national importance?
 Yes No

If yes, check applicable attributes and briefly describe how the project meets the selection criteria.

- Project is a part of a Regional Trail System prioritized by the Florida Greenways and Trails Council.
- Project is a part of a National Recreational Trail, East Coast Greenway or a trail that has other national importance.
- Project implements an adopted regional bicycle, pedestrian, or trail master plan. Give the name of the regional plan(s).
- Other (list)

Briefly describe how the project is recognized as having regional, state, or national importance (1000-character limit):

1. Safety

Prior year example. Note, this year has minor change to formatting.

1. Does the project enhance the safety of bicyclists, pedestrians and motorists?

Yes No

If yes, check applicable attributes and briefly describe how the project meets the selection criteria.

Project includes a safety component.

Project is located in an area identified as a hazardous biking/walking zone or in an area with significant numbers of safety concerns.

Project implements a bicycle and pedestrian safety action plan. Provide the name of the plan and date of adoption. Lee Countywide Bicycle and Pedestrian Safety Action Plan. Adopted September 20, 2013

Other (list) Implements Complete Streets policy along this major arterial corridor consistent with City of Cape Coral Resolution #124-15.

Kismet Parkway is a major 4-lane divided east-west arterial located in an area of the City where development is expected to pick-up rapidly within the next 25 years. There are no bicycle pedestrian facilities currently in this corridor (See pictures of existing conditions in Exhibit F). Bicycles have to share the travel lanes on this high speed arterial while pedestrians are forced to use the swale. During rainy season pedestrians are forced into the travel lanes posing serious safety issues. There have been crashes involving bicyclists and vehicles. On August 23, 2014, a teenage cyclist was killed on way to school in a collision with a motor vehicle on Kismet Parkway. This and bike ped related fatalities elsewhere in Cape Coral prompted the City of Cape Coral Police Department to apply and secure State of Florida High Visibility Pedestrian/Bicycle Enforcement (HVE) grant funds in 2015. The City used the HVE funds to undertake education and enforcement activities at several high crash locations in Cape Coral from Nov 30, 2015 to May 31, 2016. One of the sites selected for education and enforcement was the intersection of Kismet Parkway/Del Prado Boulevard. These education/enforcement activities and the proposal to build a 12' wide Multi Use Trail are consistent with the objectives of the Lee Countywide Bicycle and Pedestrian Safety Action Plan, and the actions recommended in this Plan. A crash analysis done with Signal 4 Analytics over 4 years of data from 2012 through 2015 indicated there were 75 crashes in Kismet Parkway. As expected the crashes predominantly involved automobiles. There were two (2) that involved bicycle crashes which resulted in one (1) injury and one (1) fatality. See Exhibit C-1 for the map showing the crash location and Exhibit C-2 that shows the results of the crash analysis. The project meets all objectives in the Action Plan including Objective #1 - Infrastructure (Reduce the frequency and severity of bicycle and pedestrian crashes by improving the transportation system infrastructure through construction of new facilities); Objective #2 - Education/Enforcement; Objective #3 - Livability (Sustainability and livability in communities by addressing bicycle and pedestrian mobility through long term improvements and land use strategies) and Objective #4 - Accountability (monitoring the progress of projects in reducing the frequency and severity of bicycle and pedestrian crashes annually)

SUN Trail Requests for Funding: Part VI continued

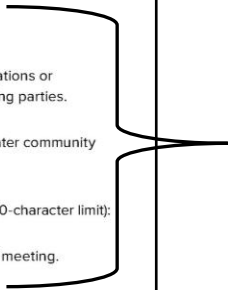
Projects are not required to meet all Selection Criteria

6. Documented public support

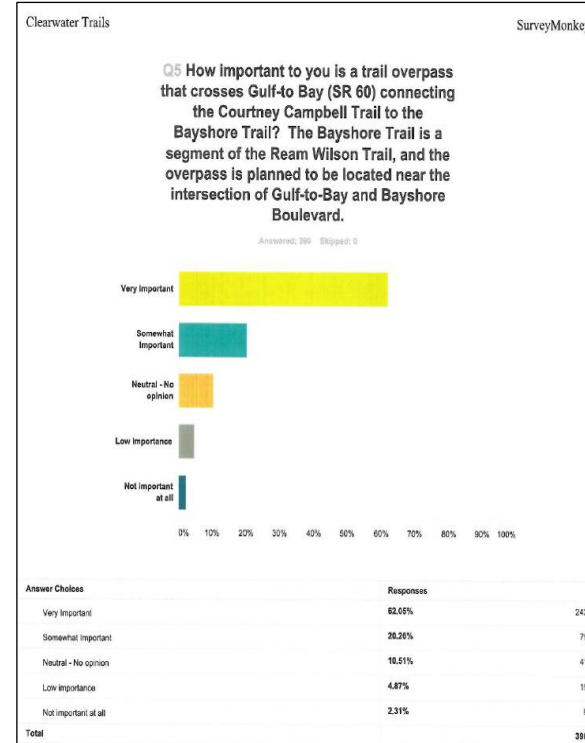
Florida Department of Transportation Shared-Use Nonmotorized (SUN) Trail Program
Request for Funding



5. If proposing construction funding, select the most appropriate response:
- Project is ready for immediate construction and all pre-construction phases are complete.
 - Project is capable of near-term development; the design is nearly complete and permitting is underway.
 - The Project Development and Environment Study (PDE) is complete/nearly complete.
 - None of the above statements are true.
6. Does the project have documented public support?
 Yes No
- If yes, select from the following and briefly explain how the project meets the selection criteria.
- The greater community supports the project as demonstrated by recently adopted proclamations or resolutions expressing commitment. Give the resolution number, adopted date and participating parties.
 - Demonstration of public support is consistent across multiple entities representing the greater community rather than a select few interest groups. Briefly explain. (100-character limit):
 - Recent community surveys indicate both need and support for the project. Briefly explain. (100-character limit):
 - An advertised public meeting for discussing the project occurred. Give the date and type of meeting.
 - Other (list)
7. Does the project have a significant immediate impact to the quality of life by enhancing economic opportunities and providing connectivity to destinations?
 Yes No
- If yes, check applicable attributes and briefly describe how the project meets the selection criteria.
- The project connects to or through federal, state, or local conservation/recreation areas. List public lands.
 - The project connects people to jobs, businesses, or civic resources.
 - The project is along or connects to a Florida Scenic Highway. List the Scenic Highway(s).
 - The project is within a Florida Trail Town as designated by the Florida Department of Environmental Protection.
 - The project is part of a public/private partnership where developers, linear corridor owners, small businesses, corporations, foundations, or private sector partners are directly supporting the project.
 - The project is within a Rural Economic Development Initiative (REDI) Community defined pursuant to Section 288.0656, Florida Statutes. List the REDI area.
 - The project is within a Rural Area of Opportunity (RAO) defined pursuant to Section 288.0656, Florida Statutes. List the RAO Area.
 - Other (list)



LEGAL NOTICE
CITY OF CLEARWATER
PUBLIC NOTICE
A public meeting will be held on **Monday, June 20, 2016 at 9am** at the **Municipal Service Building, Parks and Recreation** located at **100 S. Myrtle Avenue** to discuss a project and funding application for the construction of the **Courtney Campbell Causeway Trail Overpass**. If you have any questions or require additional information, please contact **Felicia Donnelly at 727-562-4852**.
6/17/2016



RESOLUTION NO. 16-16

A RESOLUTION OF THE CITY OF CLEARWATER SUPPORTING THE SUN TRAIL APPLICATION TO THE STATE OF FLORIDA FOR THE COMPLETION OF THE COURTNEY CAMPBELL CAUSEWAY TRAIL OVERPASS; AND AUTHORIZE THE CITY MANAGER TO EXECUTE A MEMORANDUM OF AGREEMENT FOR MAINTENANCE OF THE COURTNEY CAMPBELL CAUSEWAY TRAIL OVERPASS; PROVIDING FOR AN EFFECTIVE DATE.

WHEREAS, trails are an essential part of the City of Clearwater's multi-modal transportation and recreation network; and

WHEREAS, the regional Courtney Campbell Causeway Trail terminates in Clearwater at the Bayshore segment of the Ream Wilson Clearwater Trail at the intersection of Bayshore Boulevard and SR 60 (Gulf-to-Bay Boulevard); and

WHEREAS, the current connection is provided by an at-grade pedestrian crossing signal which crosses SR 60, a high volume and higher speed roadway; and

WHEREAS, an overpass will provide a safe alternative to the current at-grade crossing for trail users; and

WHEREAS, the City of Clearwater supports the SUN (shared use non-motorized) Trail application for the completion of the overpass to the State of Florida; and

WHEREAS, the City of Clearwater will be willing to maintain the overpass if the project is successfully completed, and City will enter into a Memorandum of Agreement with FDOT to maintain the overpass and the City Council wishes to approve and authorize the City Manager to sign the Memorandum of Agreement.

NOW, THEREFORE,

BE IT RESOLVED BY THE CITY COUNCIL OF THE CITY OF CLEARWATER, FLORIDA, AS FOLLOWS:

- That the City Council fully supports the grant application for SUN Trail funding for the completion of the overpass connecting the Courtney Campbell Causeway Trail to the Bayshore section of the Ream Wilson Clearwater Trail.
- That the City will be willing to maintain the overpass if the project is successfully completed, and City will enter into a Memorandum of Agreement with FDOT to maintain the overpass and the City Council hereby authorizes the City Manager to execute said Memorandum of Agreement.

PASSED AND ADOPTED this 16 day of June, 2016.

George N. Cretekos
George N. Cretekos
Mayor

Approved as to form:
Matthew M. Smith
Matthew M. Smith
Assistant City Attorney

Attest:
Rosemarie Call
Rosemarie Call
City Clerk

Resolution No. 16-16

Prior year example demonstrating multiple ways project has documented support.

SUN Trail Requests for Funding: Part VII (see also Part III – #2)

Required to meet the Eligibility Criteria

Certification of Project Prioritization

- 1. If the project is within a boundary of a Metropolitan/Transportation Planning Organization (MPO), it must be a MPO priority.**
- 2. For areas outside of MPO boundaries, the project must be a priority of the county (inclusive of their municipalities), tribal government, federal or state agency.**

Complete and sign

Florida Department of Transportation Shared-Use Nonmotorized (SUN) Trail Program
Request for Funding



PART VII – CERTIFICATION OF PROJECT PRIORITIZATION

1. For projects within a MPO boundary, complete the following information. If the project is outside of a MPO boundary, continue to Part VII, question #2.

Name of applicable MPO/TPO:

MPO/TPO Contact:

MPO Address:

Municipality, State and Zip:

Contact Email:

Contact Telephone Number:

Signature:

Print Name:

Title:

Date:

Your signature confirms that

(2) it is an eligible project

(4) you possess

Florida Department of Transportation Shared-Use Nonmotorized (SUN) Trail Program
Request for Funding



2. For projects outside of a MPO boundary, complete the following information:

County Name:

Contact Name:

Contact Address:

Municipality, State and Zip:

Contact Email:

Contact Telephone Number:

Signature:

Print Name:

Title:

Date:

Your signature confirms the requested project is (1) consistent with applicable county, municipality, comprehensive plan(s) and/or the long-term management plan(s) and documents; (2) it is an eligible priority of the County (tribal government, federal or state managing agency); (3) the applicable entity supports the project; and (4) you possess authorization to sign the certification of project prioritization.

SUN Trail Requests for Funding: Part VIII (see also Part III – #3)

Florida Department of Transportation Shared-Use Nonmotorized (SUN) Trail Program

Request for Funding



SUN Trail funded projects require a non-FDOT governmental entity formally committed to providing maintenance of the project (long-term trail manager). FDOT will enter into an agreement or other form of documented commitment with the entity to ensure that a local sponsor/agency is committed to long-term trail maintenance (long-term trail manager). The managing entity will be responsible for the day-to-day upkeep and daily operation; protection for the trail users; they will reduce safety hazards that occur; and they will ensure a quality level of service is maintained on the facility. Activities may consist of litter pick-up, trash removal, debris removal, soil and weed control, graffiti removal, mowing, sweeping, sign replacement, shrub trimming, maintenance of drainage, and other regularly scheduled maintenance activities. For trails constructed in the FDOT ROW, FDOT will provide remedial maintenance which involves repairing, replacing, or restoring major components that may have been damaged or destroyed. Minor repairs such as sealing asphalt pavement or repainting may occur every five to ten years, while major repairs may occur every 20 to 25 years. The area of responsibility will be the footprint of the trail within FDOT ROW as defined by the district. ALL other maintenance will be the responsibility of the non-FDOT governmental entity.

Submit the Certification of Willing Manager(s) for all proposed trail segments.

PART VIII – CERTIFICATION OF WILLING MANAGER(S)

Name of Project:

FROM:

Name of Managing Entity:

Name of Contact and Job Title:

Address:

Municipality, State, and Zip Code:

Contact Email:

Contact Telephone Number:

Signature:

Print Name:

Title:

Date:

Your signature serves as certification of (1) a commitment from your agency to maintain the facility requested and that your agency will enter into a Maintenance Memorandum of Agreement with the Department for the Project prior to the completion of design, or at the time of programming funding for any project proposed for a later phase; (2) the information in this "Request for Funding" is true and accurate; (3) to comply with the federal Uniform Relocation Assistance and Real Property Acquisition Policies Act (The Uniform Act) for any right-of-way actions required for the project; (4) to comply with the Americans with Disabilities Act; (5) lands developed with SUN Trail funds will be available for public use for the lifespan of the improvement; (6) support of other actions necessary to fully implement the proposed project; (7) and you possess authorization to sign the certification of the willing manager.

Required to meet the Eligibility Criteria

Certification of Willing Manager

Documentation that a non-FDOT governmental entity is formally committed serve as the long term trail manager providing the day-to-day upkeep, daily operations and long-term maintenance of the trail project.

Complete and sign