

DRAFT

MULTIMODAL PRIORITIES LIST

FY 2024 Priorities List (to be used in the development of the next TIP FY 2025)
Anticipated to be approved: 6/8/2023

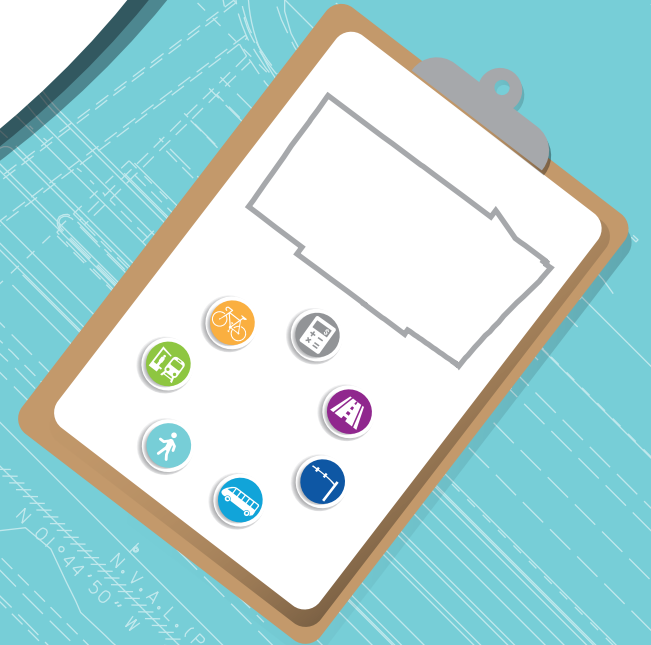


TABLE OF CONTENTS

1. Overview..... 1

2. Project Prioritization..... 5

3. Broward MPO Priority List..... 8

 Unified Planning Work Program (UPWP)..... 9

 Complete Streets and other Localized Initiatives (CSLIP)..... 11

 Complete Streets Master Plan (CSMP)..... 23

 Mobility Hubs (HB)..... 34

 Roadway..... 36

 Systems Management/Safety..... 59

 Transit..... 63

4. Florida's Turnpike Priority List..... 65



OVERVIEW

DEVELOPMENT

The Broward Metropolitan Planning Organization (MPO) is required to develop a Multimodal Priority List (MMPL) in coordination with Florida Department of Transportation (FDOT) District Four planning staff. The list is submitted to the District by August 1 annually [s.339.175 (8)(a) and (b), F.S.]. FDOT uses the MMPL to develop the Draft Tentative Work Program (DTWP) that is presented to the MPO each fall, which in turn is used to develop the following year's Transportation Improvement Program (TIP). The Fiscal Year (FY) 2024 MMPL is used to develop the FY 2025-2029 DTWP and the FY 2025-2029 Broward MPO TIP.

The MMPL is a core product of the MPO that serves as a bridge between the MPO's Long Range Transportation Plan (LRTP)/Metropolitan Transportation Plan (MTP) and the TIP. Figure 1 shows the Broward MPO core product development process. The MMPL is used to set funding priorities for federal and state funds within our region. Only projects contained in the MTP are eligible for inclusion on the MMPL. Figure 2 presents the relationship among MTP, MMPL, and TIP.

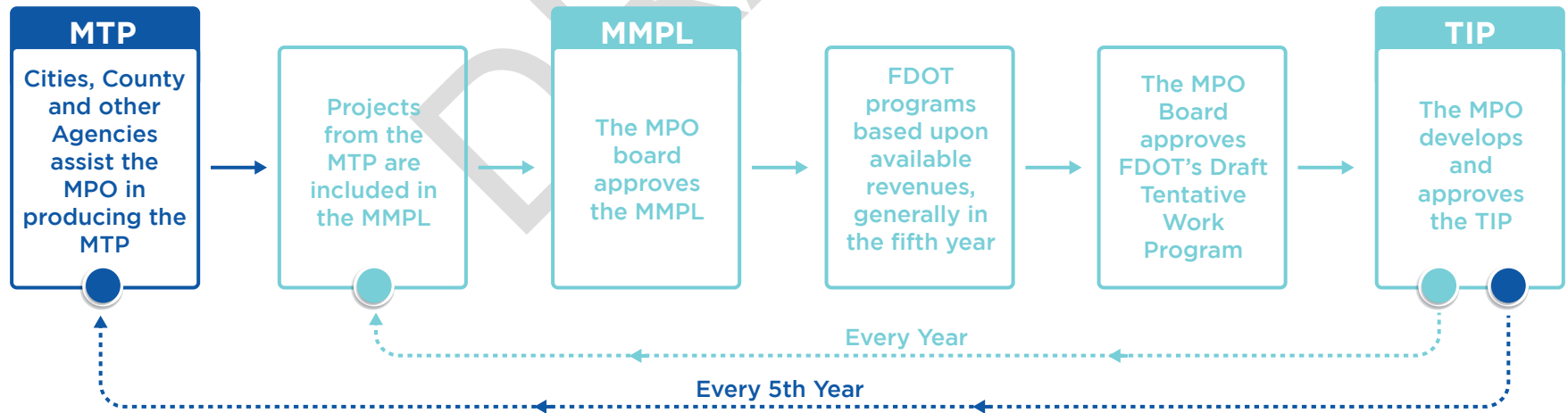


Figure 1 Core Product Development Process



Figure 2 Relationship among MTP, MMPL and TIP

The 2045 MTP was approved at the December 2019 MPO Board meeting. The Cost Feasible Plan, as a component of the MTP including a list of prioritized projects, was approved with it. The Cost Feasible Plan includes six funding programs in order to account for the region’s multimodal transportation needs. To be consistent with the 2045 MTP and the funding sources assumed in the financial plan of the 2045 MTP, the MMPL is organized by six funding programs. It utilizes the 2045 MTP’s allocations for the Broward MPO’s attributable funds as shown in Table 1.

Table 1 Programs and funding allocation

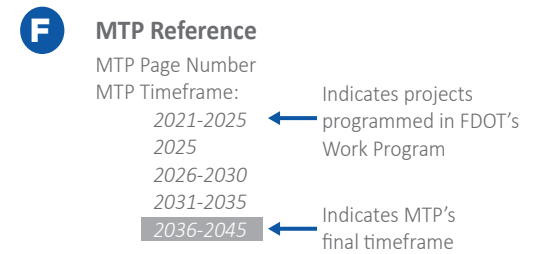
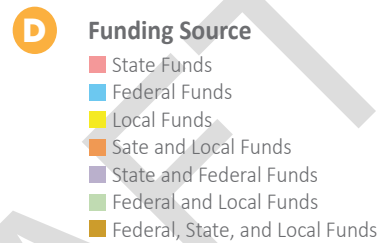
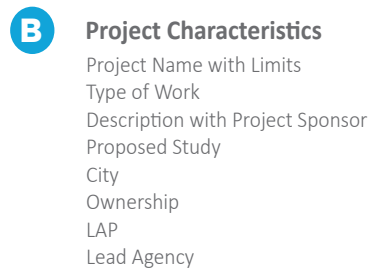
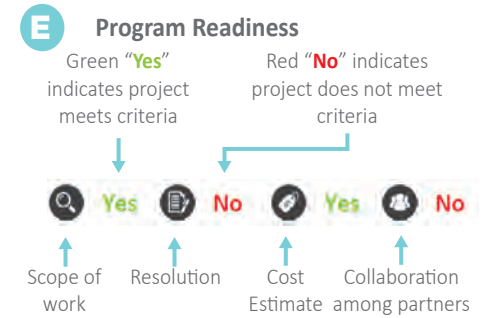
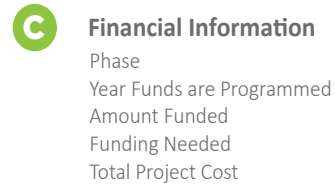
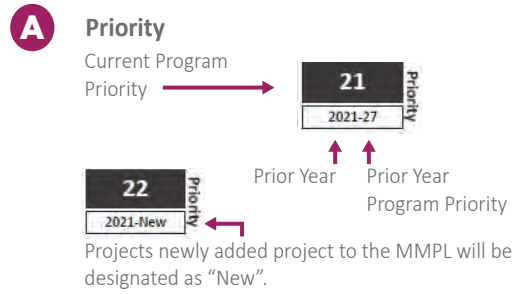
Program	Allocation
Highway/Roadway	20%
Transit	10%
Systems Management/Safety	15%
Complete Streets and other Localized Initiatives Program (CSLIP)	20%
Complete Streets Master Plan (CSMP)	25%
Mobility Hubs	10%
Total	100%

In addition, the MMPL assigns a preferred funding source for each prioritized project that is consistent with the 2045 MTP’s cost feasible plan. The funding sources are indicated as State, Federal, Local or any combination of the three. To facilitate project delivery, the MMPL emphasizes a “Program Ready” concept. “Program ready” means that a project includes a clear scope of work, approved resolution, cost estimate, and collaboration with partners. Projects that meet all of these four criteria are eligible for funding. For an example of how these concepts are illustrated in the MMPL, please refer to Figure 3.

UNIFIED PLANNING WORK PROGRAM (UPWP)

Besides the six programs mentioned earlier, funding for the Broward MPO’s Unified Planning Work Program (UPWP)/budget is top priority. The MPO’s UPWP contains the agency’s Strategic Business Plan activities, planning efforts, and operating budget for a two-year period. The UPWP includes a description of the planning work and resulting products, who will perform the work, time frames for completing the work, the cost of the work, and the source(s) of funds. Further, the UPWP provides a comprehensive picture to citizens and stakeholders who wish to see how federal and state transportation planning dollars are to be spent by the Broward MPO, local governments, and transit agencies providing services to Broward. The UPWP is developed by MPO staff in consultation with partner agencies, municipal staff, and input from local citizens and stakeholders. The information collected is incorporated into the UPWP and budgeted accordingly. To support services that the MPO provides to the Broward region, the Broward MPO assigns Surface Transportation Program – Urban areas >200K (SU) funds to the UPWP. Available MPO attributable funds for the six programs excludes SU funds already allocated to UPWP.

HOW TO READ THE BROWARD MPO PRIORITY LIST



Program Direction
 Program Direction is included to give specific instructions on how to program funds for the respective project.

Roadway								Roadway MPO Adopted Program Funding Goal 20%	
Phase	<2024	2024	2025	2026	2027	2028	Amount Funded	Funding Needed	
34 2023-34	University Dr from Old Club Rd to Loxahatchee Rd - FM#						Funding Source: Federal		
Type of Work: Widening							MTP Page # 5-16 MTP Timeframe: 2026-2030		
Proposed Study: PD&E									
LAP: No Lead Agency: FDOT									
MTP Page # 5-16 MTP Timeframe: 2026-2030									
Program Direction:									
Widen from 2 to 4 lanes with bike lanes and sidewalks. University Drive tapers from a 4-lane divided section to a 2-lane roadway south of Old Club Rd causing traffic congestion and back up delays at crossing intersections. Project Sponsor: City of Parkland									
PE	0	0	0	0	0	0	0	2,073,974	
CST	0	0	0	0	0	0	0	9,427,156	
Total	0	0	0	0	0	0	0	11,501,130	
City: Parkland							Total Project Cost Estimate: 11,501,130		
Ownership: Local									
35 2023-35	SW 148TH AVE FROM BASS CREEK RD TO MIRAMAR PKWY - FM# 4496431						Funding Source: Federal		
Type of Work: PD&E/EMO STUDY							MTP Page # 5-18 MTP Timeframe: 2026-2030		
Proposed Study: PD&E									
LAP: No Lead Agency: FDOT									
MTP Page # 5-18 MTP Timeframe: 2026-2030									
Program Direction:									
2022 MPO ROADWAY PRIORITY #36 WIDEN 2 TO 4 LANES WITH MEDIAN, BIKE LANES, SIDEWALKS, LANDSCAPE, HARDSCAPE, AND IRRIGATION.									
PDE	0	0	0	0	500,000	1,500,000	2,000,000	0	
PE	0	0	0	0	0	0	0	1,108,153	
ROW	0	0	0	0	0	0	0	0	
CST	0	0	0	0	0	0	0	7,309,787	
Total	0	0	0	0	500,000	1,500,000	2,000,000	8,417,940	
City: Miramar							Total Project Cost Estimate: 10,417,940		
Ownership: Local									

Program Funding Allocation
 The program funding allocation for each respective program is listed at the top of the page for reference. The 2045 MTP's allocations for the Broward MPO's attributable funds are shown in Table 1.

Program Threshold
 Program Thresholds are identified in each program where the amount of program ready projects listed exceed the program funding allocation of available MPO attributable funds. Projects Beyond the program threshold will not receive new funding this MMPL Cycle.

Figure 3 Sample of MMPL

PROJECT PRIORITIZATION

The 2035 LRTP established a new paradigm to provide a balanced transportation system with greater investments toward alternative modes such as transit, bicycle and pedestrian facilities, and smart growth policies. Both the Commitment 2040 and MTP 2045 follow this set standard. In order to guarantee that the transportation investments are balanced among the transportation modes, percentages agreed upon in the MTP 2045 by the MPO Board (during the MTP's development) were used to distribute revenue among the six programs. Projects within each program were prioritized according to criteria established for each individual program. The following describes the prioritization process for each of the six programs.

COMPLETE STREETS AND OTHER LOCALIZED INITIATIVES PROGRAM (CSLIP)

CSLIP provides funding for small local transportation projects that will improve safety and mobility for all transportation users. The MPO facilitates this annual competitive grant program to fund projects such as Complete Streets projects, traffic calming and intersection improvements, ADA compliance upgrades, bike racks, and technology advancements (e.g., transit signal priority and traffic control devices). Projects funded through this program have a cap of \$3 million in construction costs per project.

CSLIP uses an objective tool to evaluate and rank the application submitted. This tool was developed with direction from the Board and uses several geographic datasets to score the projects. Evaluation criteria weights are 20% for safety, 20% for accessibility, 17% for equity, 17% for mobility, 13% for economic vitality, and 13% for environmental stewardship.

COMPLETE STREETS MASTER PLAN (CSMP)

Complete streets are built for all users, emphasizing the safe and efficient movement of people including pedestrians, bicyclists, and transit riders. The MPO developed a CSMP to guide future investments by creating a prioritized list of projects based on technical, data-driven analysis and community input. Funding is allocated to this program based on the prioritized order established in the CSMP. Projects funded through this program are generally greater than \$2 million.

Prioritization is a process of scoring and ranking the Complete Streets projects and Super Connectors based on identified criteria or variables. The criteria is consistent with the goals and objectives established in the Commitment 2040 LRTP, continues in the Commitment 2045 MTP, and builds upon the format and content of the CSLIP evaluation criteria. The criteria between the two differ slightly but fit within the same theme.



For CSLIP details, please visit the CSLIP policies link at: https://www.browardmpo.org/images/WhatWeDo/CSLIP/Round_6_Policies.pdf and the evaluation chart at: https://www.browardmpo.org/images/WhatWeDo/CSLIP/CSLIP_Evaluation_Criteria_Table.pdf



For CSMP details, please refer to the CSMP prioritization criteria link at: http://www.browardmpo.org/images/CSMP/CSMP_prioritization_criteria.pdf

ROADWAY & TRANSIT PROGRAMS

Funding for the roadway program is allotted to transportation improvements that increase roadway capacity by building new roadways, adding lanes to existing roadways, or building/expanding interchanges and major intersections. Funding may also be allocated to concept studies, preliminary engineering, and design to support the development of roadway capacity projects. The transit funding program includes transit capital investments such as transit vehicles, transit technology investments (e.g., fare collection equipment, automatic passenger counters, vehicle location, etc.), and roadway improvements designed to serve as exclusive lanes for transit services (for which operating funding has been identified).

Projects in the Roadway Program and Transit Program follow the same prioritization process established in the MTP 2045. The prioritization criteria is based upon the MTP's Goals and Objectives, adopted by the MPO Board on May 10, 2018, and the Performance Measures developed to ensure consistency with the FAST Act. These six measures, which are referred to as planning factors, were identified as best representing the MTP's Goals and Objectives they are: (1) Mobility: Providing high speed and reliable travel between major activity centers and destinations. The focus of mobility is to get from one place to another as quickly as possible and typically is characterized by longer trips. (2) Accessibility: Providing access and circulation within higher-density, mixed-use places; tend to be shorter trips. (3) Safety: Reducing the number and severity of crashes. (4) Equity: Ensuring that benefits and impacts are shared among Broward's population. (5) Environmental Stewardship: Protecting the natural and built environment. (6) Economic Vitality: Supporting economic activity and businesses.

Each of the six planning factors were given a weighted value to align it with its importance to the community. The weighting values were determined through an interactive polling process with the Technical Advisory Committee (TAC), the Citizens' Advisory Committee (CAC), and the MPO Board. The values obtained were averaged and resulted: Mobility – 20.5, Accessibility – 20.8, Safety – 18.7, Equity – 14.3, Environmental Stewardship – 12.8, and Economic Vitality – 13.0. Six matrixes with prioritization criteria were developed for each planning factor respectively. These matrixes include evaluation criteria, assessment scoring, and scoring guidelines. Through several discussions with the TAC and CAC, the prioritization criteria were revised and shown in tables 1 through 6 in the Technical Report #4 Project Prioritization Process.

Several key changes that resulted from this process were:

- The inclusion of additional Safety criteria to better reflect the importance of this issue;
- The addition of a positive criteria for projects that may improve environmental conditions;
- Clarifications to several criteria to ensure that both roadway and transit projects were evaluated; and
- Adjustments to the Sea Level Rise Mitigation criteria to account for projects that improve the resiliency of infrastructure to extreme weather, regardless of the project's location in a defined vulnerability area.

It is important to note that whereas this process has been developed for the 2045 MTP, these prioritization criteria and planning factor weightings can change over time as the Emphasis Areas stressed by the federal and state government change and local stakeholder preferences change. Future MTPs will address these changes with adjustments to these factors. In addition to an overall process, the Broward MPO project prioritization criteria were developed with the following considerations:

- Projects are to be evaluated regardless of their mode (roadway, transit, Transportation Systems Management and Operations (TSM&O), etc.).
- Scores are to be normalized to account for variance in maximum points awarded in each planning factor group.
- An initial recommendation of rounding negative scores to 0 was reconsidered at the TAC's request to better reflect the potential negative impacts of a project. Thus, negative scores are carried through.

SYSTEMS MANAGEMENT/SAFETY PROGRAM

Funding allocated to this program is to be focused on Transportation Systems Management and Operations (TSM&O), a program based on actively managing the multimodal transportation network, measuring performance, streamlining and improving the existing system, promoting effective cooperation/collaboration, and delivering positive safety and mobility outcomes to the traveling public. Example projects funded in this program include signal timing/coordination and major safety improvements. Funding in this program is also set aside to support studies to identify, prioritize, and implement safety improvements.


TSM&O projects on-state highway system were selected and prioritized by the FDOT. Safety improvement study projects were selected and prioritized according to the severity index as part of the Commitment 2045 MTP. The severity index is a measure that looks at total crashes and crash severity. It uses a weighted average (higher score for incapacitating and fatal crashes) to develop an index that ranks locations in terms of their importance for future safety analysis and improvements. The safety improvement projects identified through safety studies will be eligible for funding allocated to the Systems Management/Safety Program, as discussed previously. MPO staff are coordinating with FDOT District 4 and other local partners to lead these studies in the near future.

MOBILITY HUB PROGRAM

The Mobility Hub concept was initially introduced in the 2035 LRTP. The Mobility Hub program continues to be included in the 2040 LRTP and 2045 MTP. Mobility Hubs are transit access points with frequent transit service, high development potential, and a critical point for travel demand or transfers within the transit system. Funding through this program is available to help support the collaborative development of Mobility Hubs as communities identify and commit to opportunities that further the objectives of this program.

Prioritization of Mobility Hub projects is based on identified criteria or variables. Guided by the goals in the 2045 MTP, the recommended evaluation framework measures a candidate location's existing market and network readiness by incorporating the best available information into the evaluation matrix for review. The matrix includes measures of existing trip producers and attractors, potential trip producers, market ready attractors, existing transit ridership, and frequency. The prediction of theoretical future service would not be the driving factor for the evaluation although potential service is a consideration. The third factor in the evaluation is sponsor readiness, which is the willingness of the local government to support Mobility Hub investment.

 For Systems Management/Safety details, please refer to 2045 MTP at: <http://www.browardmpo.org/index.php/mtp-documents>

 For Mobility Hub details, please refer to the Revisit & Update Mobility Hubs Program - Assess Current Methodology Technical Memorandum link at: http://www.browardmpo.org/images/2-TM1-Mobility_Hubs_Revisit-Assess_Current_Methodology-January_2018_FINAL.pdf

BROWARD MPO PRIORITY LIST



Phase	<2024	2024	2025	2026	2027	2028	Amount Funded	Funding Needed
-------	-------	------	------	------	------	------	---------------	----------------

01 2023-01	Priority Type of Work: TRANSPORTATION PLANNING	BROWARD MPO FY 2022/2023-2027/2028 UPWP - FM# 4393244-5-6					Funding Source: FEDERAL		
		Proposed Study: N/A					Yes	Yes	Yes

Program Direction: Add \$500,000 for FY 2026. Add \$9 Million to FY 2029.

LAP: N/A Lead Agency: BROWARD MPO
 MTP Page # 1-2 MTP Timeframe: N/A

2023 MPO PRIORITY #1

PLN	0	11,000,000	8,000,000	8,000,000	8,500,000	9,000,000	44,500,000	9,500,000
Total	0	11,000,000	8,000,000	8,000,000	8,500,000	9,000,000	44,500,000	9,500,000

City: BROWARD MPO Ownership: N/A Annual Project Cost Estimate: 9,000,000



CSLIP

COMPLETE STREETS AND OTHER LOCALIZED INITIATIVES PROGRAM

PROGRAM



LEGEND:

 PRIORITIZED
CSLIP PROJECTS



Phase	<2024	2024	2025	2026	2027	2028	Amount Funded	Funding Needed
-------	-------	------	------	------	------	------	---------------	----------------

01	Priority	CITY OF WESTON VARIOUS LOCATIONS - FM# 4482881					Funding Source: FEDERAL		
2023-01	2023-01	Type of Work: SIDEWALK		Proposed Study: N/A			Yes Yes Yes Yes		
Program Direction:									
2022 MPO CYCLE 4 PRIORITY #19; LAP W/ CITY OF WESTON INDIAN TRACE FROM TOWN CENTER BLVD TO BONAVENTURE BLVD; ROYAL PALM BLV. FROM WESTON HILLS DR TO TOWN CENTER BLVD; WESTON RD. FROM INDIAN TRACE TO ROYAL PALM BLVD; SOUTH POST RD. FROM BONAVENTURE BLVD TO WEST OF ENTERPRISE AVE									
PE	0	0	0	790,381	0	0	790,381	0	
CST	0	0	0	0	0	0	0	3,968,855	
Total	0	0	0	790,381	0	0	790,381	3,968,855	
City: Weston					Ownership: Local		Total Project Cost Estimate: 4,759,236		

02	Priority	HONEY HILL DR FROM FLAMINGO RD TO SW 55 ST - FM# 4482901					Funding Source: FEDERAL		
2023-03	2023-03	Type of Work: BIKE PATH/TRAIL		Proposed Study: N/A			Yes Yes Yes Yes		
Program Direction:									
2022 MPO CYCLE 4 PRIORITY #21;LAP W/ CITY OF MIRAMAR CONSTRUCTION OF 8FT SHARED USE PATH, PEDESTRIAN LIGHTING									
PE	0	0	0	312,322	0	0	312,322	0	
CST	0	0	0	0	0	0	0	878,454	
Total	0	0	0	312,322	0	0	312,322	878,454	
City: Miramar					Ownership: Local		Total Project Cost Estimate: 1,190,776		

Phase	<2024	2024	2025	2026	2027	2028	Amount Funded	Funding Needed
-------	-------	------	------	------	------	------	---------------	----------------

03 2023-04	Priority CITYWIDE SIDEWALK IMPROVEMENTS IN LAUDERDALE LAKES - FM# 4497161	Type of Work: SIDEWALK					Proposed Study: N/A			Funding Source: FEDERAL
	2023-04	Type of Work: SIDEWALK	Proposed Study: N/A					Yes	Yes	Yes

Program Direction: LAP: Yes Lead Agency: Lauderdale Lakes
 MTP Page # 5-30 MTP Timeframe: N/A

2022 MPO CSLIP PRIORITY #22 CYCLE 5. CONSTRUCTION OF ADA COMPLIANT NEW SIDEWALKS AT NW 52 AV FRM OAKLAND PARK BLVD TO NW 36 ST;NW 43 CT. FRM NW 41 ST TO NW 48 AVE;NW 21ST ST FRM SR-7 TO WILLIE WEBB PARK;NW 33 AVE AT VARIOUS LOCATIONS; NW 37 ST AT VARIOUS LOCATIONS; NW 24 CT AT VARIOUS LOCATIONS.

PE	0	0	0	305,890	0	0	305,890	0
CST	0	0	0	0	0	0	0	761,524
Total	0	0	0	305,890	0	0	305,890	761,524

City: Lauderdale Lakes Ownership: Local Total Project Cost Estimate: 1,067,414

04 2023-05	Priority NEW SIDEWALKS VARIOUS LOCATIONS IN HOLLYWOOD'S GRACEWOOD NEIGHBORHOOD - FM# 4497171	Type of Work: SIDEWALK					Proposed Study: N/A			Funding Source: FEDERAL
	2023-05	Type of Work: SIDEWALK	Proposed Study: N/A					Yes	Yes	Yes

Program Direction: LAP: Yes Lead Agency: Hollywood
 MTP Page # 5-30 MTP Timeframe: N/A

2022 MPO CSLIP PRIORITY #23 CYCLE 5.CONSTRUCT NEW 5'-0" WIDE CONCRETE SIDEWALK WITH CURB RAMPS TO FILL-IN AND CONNECT TO EXISTING SIDEWALKS WITHIN THE GRACEWOOD NEIGHBORHOOD. PROPOSED SIDEWALKS WILL BE INSTALLED AT VARIOUS LOCATIONS WITHIN THE BOUNDARIES OF JOHNSON ST TO THE NORTH, HOLLYWOOD BLVD TO THE SOUTH,SR7 TO THE EAST & N 64TH AVE TO THE WEST.

PE	0	0	0	338,850	0	0	338,850	0
CST	0	0	0	0	0	0	0	2,046,824
Total	0	0	0	338,850	0	0	338,850	2,046,824

City: Hollywood Ownership: Local Total Project Cost Estimate: 2,385,674

Phase	<2024	2024	2025	2026	2027	2028	Amount Funded	Funding Needed
-------	-------	------	------	------	------	------	---------------	----------------

05 2023-06	Priority NE 12TH TERR ROADWAY IMPROVEMENTS - FM# 4497181	Type of Work: SIDEWALK					Proposed Study: N/A			Funding Source: FEDERAL			
							Yes	Yes	Yes	Yes			

Program Direction: LAP: Yes Lead Agency: Oakland Park
 MTP Page # 5-30 MTP Timeframe: N/A

2022 MPO CSLIP PRIORITY #25 CYCLE 5. CONSTRUCT PEDESTRIAN FACILITIES AS WELL AS WIDENING FOR THE INSTALLATION OF BICYCLE FACILITIES ALONG NE 12TH TERRACE FROM FLORANADA ROAD TO NE 40TH PLACE AND OAKLAND PARK BOULEVARD TO CITY LIMITS/ MIDDLE RIVER.

PE	0	0	0	494,929	0	0	494,929	0
CST	0	0	0	0	0	0	0	1,410,353
Total	0	0	0	494,929	0	0	494,929	1,410,353

City: Oakland Park Ownership: Local Total Project Cost Estimate: 1,905,282

06 2023-07	Priority CITY OF LAUDERHILL VARIOUS LOCATIONS - FM# 4507831	Type of Work: BIKE LANE/SIDEWALK					Proposed Study: N/A			Funding Source: Federal			
							Yes	Yes	Yes	Yes			

Program Direction: LAP: Yes Lead Agency: Lauderhill
 MTP Page # 5-30 MTP Timeframe: N/A

Cycle 6. NW 49 Avenue from NW 12 Street to NW 23 Street, NW 43 Terrace from NW 12 Street to NW 16 Street, NW 12 Street from NW 50 Avenue to SR-7. Replace sidewalks, crosswalks, ADA ramps, bicycle sharrows, pedestrian lighting, and traffic calming on NW 49th Ave, NW 43rd Terr and NW 12th St. Project Sponsor: Lauderhill

PE	0	0	0	0	0	150,190	150,190	0
CST	0	0	0	0	0	0	0	1,171,758
Total	0	0	0	0	0	150,190	150,190	1,171,758

City: Lauderhill Ownership: Local Total Project Cost Estimate: 1,321,948

Phase	<2024	2024	2025	2026	2027	2028	Amount Funded	Funding Needed
-------	-------	------	------	------	------	------	---------------	----------------

07 2023-08	Priority Tyler Street Traffic Flow Modification - FM# 4507901						Funding Source: Federal, State, and Local			
	Type of Work: Roadway Reconfiguration	Proposed Study: Feasibility					Yes	Yes	Yes	Yes
Program Direction:							LAP: Yes	Lead Agency: Hollywood		
Cycle 6. Tyler Street from N 21 Avenue and Young Circle. Convert Tyler Street from a one-way (three west-bound lanes) to two-way (two west-bound and one east-bound lane) road, landscape bulbouts, crosswalks, traffic signalization, roadway and sidewalk improvements, utility, sharrow, crosswalk, drainage, intersection Improvements, landscape, lighting pedestrian. Project Sponsor: Hollywood							MTP Page # 5-30		MTP Timeframe: N/A	
CST-Local	0	0	0	0	0	0	0	764,819		
PE	0	0	0	0	0	299,052	299,052	0		
CST	0	0	0	0	0	0	0	3,799,223		
Total	0	0	0	0	0	299,052	299,052	4,564,042		
City: Hollywood					Ownership: Local/State		Total Project Cost Estimate: 4,863,094			

08 2023-New	Priority NW 41 Street from Sr-7 to NW 31 Avenue - FM#						Funding Source: Federal and Local			
	Type of Work: Multi-use path	Proposed Study: N/A					Yes	Yes	Yes	Yes
Program Direction:							LAP: Yes	Lead Agency: Lauderdale Lakes		
Cycle 7. Installation of a multi-use path on both sides of NW 41st St from SR-7 and NW 31st Ave in addition to two new community shuttle stops							MTP Page # 5-30		MTP Timeframe: N/A	
PE	0	0	0	0	0	0	0	234,620		
PE-CST-LF	0	0	0	0	0	0	0	187,215		
CST	0	0	0	0	0	0	0	1,344,757		
Total	0	0	0	0	0	0	0	1,766,592		
City: LAUDERDALE LAKES					Ownership: Local		Total Project Cost Estimate: 1,766,592			

Phase	<2024	2024	2025	2026	2027	2028	Amount Funded	Funding Needed
-------	-------	------	------	------	------	------	---------------	----------------

09 2023-New	Priority City of Hollywood Area-wide - FM#	Type of Work: Sidewalks					Proposed Study: N/A			Funding Source: Federal and Local		
	Search Yes	Document Yes	Lock Yes	Alert Yes	LAP: Yes			Lead Agency: Hollywood				

Program Direction:

Cycle 7. Area between I-95 to the west, Dixie Hwy to the east, Pembroke Rd to the south and Johnson St to the north. Please refer to the project location map in the provided back up documentation for this project.

PE	0	0	0	0	0	0	0	452,982
PE-CST-LF	0	0	0	0	0	0	0	298,655
CST	0	0	0	0	0	0	0	3,529,128
Total	0	0	0	0	0	0	0	4,280,765

City: HOLLYWOOD Ownership: Local Total Project Cost Estimate: 4,280,765

10 2023-New	Priority NE 15 Avenue from Sunrise Boulevard to south fork of the Middle River - FM#	Type of Work: Bicycle lanes					Proposed Study: N/A			Funding Source: Federal and Local		
	Search Yes	Document Yes	Lock Yes	Alert Yes	LAP: Yes			Lead Agency: Fort Lauderdale				

Program Direction:

Cycle 7. Access Management, ADA, Bicycle Lanes, Crosswalk, Intersection Improvements, Landscape, Median, Roadway Improvement, Signalization (Pedestrian), Traffic Calming

PE	0	0	0	0	0	0	0	514,812
PE-CST-LF	0	0	0	0	0	0	0	464,444
CST	0	0	0	0	0	0	0	3,211,186
Total	0	0	0	0	0	0	0	4,190,442

City: FORT LAUDERDALE Ownership: Local Total Project Cost Estimate: 4,190,442

PROGRAM THRESHOLD

Phase	<2024	2024	2025	2026	2027	2028	Amount Funded	Funding Needed
-------	-------	------	------	------	------	------	---------------	----------------

11 2023-New	Priority City of Oakland Park Sidewalks Improvements at Various Locations - FM#	Type of Work: Sidewalks					Proposed Study: N/A			Funding Source: Federal and Local				
	Program Direction:						LAP: Yes		Lead Agency: Oakland Park					
Cycle 7. Construct sidewalks along NE 15th Ave from E Oakland Park Blvd to NE 38th St and on the cross streets from NE 32nd St to NE 37 St extending from NE 13th Ave to NE 16th Ave. NE 15 Avenue from Oakland Park Boulevard to NE 38 Street, NE 32 Street from NE 13 Avenue to NE 16 Avenue, NE 33 Street from NE 13 Avenue to NE 16 Avenue, NE 34 Street from NE 13 Avenue to NE 16 Avenue, NE 35 Street from NE 13 Avenue to NE 16 Avenue, NE 36 Street from NE 13 Avenue to NE 16 Avenue, NE 37 Street from NE 13 Avenue to NE 16 Avenue.														
PE	0	0	0	0	0	0	0	0	194,390					
PE-CST-LF	0	0	0	0	0	0	0	277,015						
CST	0	0	0	0	0	0	0	1,097,421						
Total	0	0	0	0	0	0	0	1,568,826						
City: OAKLAND PARK						Ownership: Local		Total Project Cost Estimate: 1,568,826						

12 2023-New	Priority NW 50th Street from N University Drive to N Pine Island Rd - FM#	Type of Work: Multi-use path					Proposed Study: N/A			Funding Source: Federal and Local				
	Program Direction:						LAP: Yes		Lead Agency: Lauderhill					
Cycle 7. Roundabout at NW 94 Avenue and NW 42 Street														
PE	0	0	0	0	0	0	0	0	5,000					
PE-CST-LF	0	0	0	0	0	0	0	499,395						
CST	0	0	0	0	0	0	0	956,616						
Total	0	0	0	0	0	0	0	1,461,011						
City: LAUDERHILL						Ownership: Local		Total Project Cost Estimate: 1,461,011						

Phase	<2024	2024	2025	2026	2027	2028	Amount Funded	Funding Needed
13 Priority 2023-New	Complete Street City of Sunrise at Various Locations - FM# Type of Work: Bicycle Lanes Proposed Study: N/A						Funding Source: Federal and Local Yes Yes Yes Yes LAP: Yes Lead Agency: Sunrise MTP Page # 5-30 MTP Timeframe: N/A	
	Program Direction: Cycle 7. Provide dedicated bicycle lanes on NW 94th Ave, NW 42nd St and NW 50th St. Install a roundabout at NW 94th Ave and NW 42nd St. NW 94 Avenue from W Oakland Park Boulevard to NW 42 Street, NW 42 Street from NW 94 Avenue to Nob Hill Road, NW 50 Street from NW 94 Avenue to N Pine Island Road.							
PE	0	0	0	0	0	0	0	890,934
PE-CST-LF	0	0	0	0	0	0	0	590,623
CST	0	0	0	0	0	0	0	3,489,675
Total	0	0	0	0	0	0	0	4,971,232
City: SUNRISE						Ownership: Local	Total Project Cost Estimate: 4,971,232	
14 Priority 2023-New	NE Eller Street from NE 9 Avenue to Deerfield Avenue - FM# Type of Work: Traffic Calming Proposed Study: N/A						Funding Source: Federal and Local Yes Yes Yes Yes LAP: Yes Lead Agency: Deerfield Beach MTP Page # 5-30 MTP Timeframe: N/A	
	Program Direction: Cycle 7. Provide a shared use path, pedestrian lighting, enhanced crosswalks, traffic calming elements and other improvements on NE Eller St from NE 9th Ave to Deerfield Avenue							
PE	0	0	0	0	0	0	0	5,000
PE-CST-LF	0	0	0	0	0	0	0	488,397
CST	0	0	0	0	0	0	0	4,978,765
Total	0	0	0	0	0	0	0	5,472,162
City: DEERFIELD BEACH						Ownership: Local	Total Project Cost Estimate: 5,472,162	

Phase	<2024	2024	2025	2026	2027	2028	Amount Funded	Funding Needed
-------	-------	------	------	------	------	------	---------------	----------------

15 2023-New	Priority NE 21 Court from NE 1 Avenue to NE 5 Avenue - FM#						Funding Source: Federal		
	Type of Work: Traffic Calming	Proposed Study: N/A					Yes	Yes	Yes
Program Direction:							LAP: Yes	Lead Agency: Wilton Manors	
Cycle 7. Provide a sidewalk connection on the north side of NE 21st Ct from NE 1st Ave to NE 5th Ave. Raised intersection at NE 5th Avenue							MTP Page # 5-30	MTP Timeframe: N/A	
PE	0	0	0	0	0	0	0	90,000	
CST	0	0	0	0	0	0	0	570,212	
Total	0	0	0	0	0	0	0	660,212	

City: WILTON MANORS Ownership: Local Total Project Cost Estimate: 660,212

16 2023-New	Priority Bass Creek Road from Lakeside Drive to SW 160 Avenue - FM#						Funding Source: Federal and Local		
	Type of Work: Traffic Calming	Proposed Study: N/A					Yes	Yes	Yes
Program Direction:							LAP: Yes	Lead Agency: Miramar	
Cycle 7. Construct a roundabout at Bass Creek Rd and Lakeside Dr. Construct an 8-ft sidewalk on the south side of Bass Creek Rd between Lakeside Drive and Dykes Rd.							MTP Page # 5-30	MTP Timeframe: N/A	
PE	0	0	0	0	0	0	0	600,578	
PE-CST-LF	0	0	0	0	0	0	0	595,578	
CST	0	0	0	0	0	0	0	3,518,910	
Total	0	0	0	0	0	0	0	4,715,066	

City: MIRAMAR Ownership: State/Local Total Project Cost Estimate: 4,715,066

Phase	<2024	2024	2025	2026	2027	2028	Amount Funded	Funding Needed
-------	-------	------	------	------	------	------	------------------	-------------------

17 2023-New	Priority NW 40th Street from N University Drive and Riverside Drive - FM#	Type of Work: Multi-Use Path					Proposed Study: N/A			Funding Source: Federal and Local		
	Program Direction:						LAP: Yes MTP Page # 5-30	Lead Agency: Coral Springs MTP Timeframe: N/A				

Cycle 7. Replace asphalt sidewalks with a wider concrete multi-use path, expand existing multi-use path and replace with concrete, install roundabouts, and new curb and gutter.

PE	0	0	0	0	0	0	0	5,000
PE-CST-LF	0	0	0	0	0	0	0	597,432
CST	0	0	0	0	0	0	0	702,345
Total	0	0	0	0	0	0	0	1,304,777

City: CORAL SPRINGS Ownership: Local Total Project Cost Estimate: 1,304,777

18 2023-New	Priority Complete Street City of Weston - FM#	Type of Work: Bicycle Lanes					Proposed Study: N/A			Funding Source: Federal and Local		
	Program Direction:						LAP: Yes MTP Page # 5-30	Lead Agency: Weston MTP Timeframe: N/A				

Cycle 7. Addition of bicycle facilities on Blatt Blvd, Racquet Club Rd, Lakeview Dr, E. Mall Rd, and W. Mall Rd. At segments where existing conditions don't allow 5' bicycle lanes, sharrows are proposed. Blatt Boulevard from Lakeview Drive to Bonaventure Boulevard, Racquet Club Road from Saddle Club Road to SR-84, Lakeview Drive from Saddle Club Road to W Mall Road, E Mall Road from Racquet Club Road to SR-84, and W Mall Road from Racquet Club Road to SR-84.

PE	0	0	0	0	0	0	0	809,371
PE-CST-LF	0	0	0	0	0	0	0	1,095,172
CST	0	0	0	0	0	0	0	3,189,081
Total	0	0	0	0	0	0	0	5,093,624

City: WESTON Ownership: Local Total Project Cost Estimate: 5,093,624

Phase	<2024	2024	2025	2026	2027	2028	Amount Funded	Funding Needed
-------	-------	------	------	------	------	------	---------------	----------------

19 2023-New	Priority	South side of C-13 Canal Greenway from SR-7 and NW 32 Way - FM#					Funding Source: Federal and Local		
		Type of Work: Multi-use path					Proposed Study: N/A		
Program Direction:							LAP: Yes	Lead Agency: Lauderdale Lakes	
Cycle 7. Multi-use path, ADA, bicycle rack, lighting (pedestrian)							MTP Page # 5-30	MTP Timeframe: N/A	
PE	0	0	0	0	0	0	0	5,000	
PE-CST-LF	0	0	0	0	0	0	0	253,348	
CST	0	0	0	0	0	0	0	1,346,304	
Total	0	0	0	0	0	0	0	1,604,652	

City: LAUDERDALE LAKES Ownership: Local Total Project Cost Estimate: 1,604,652

20 2023-New	Priority	NE 26 Street from US-1 to Bayview Drive - FM#					Funding Source: Federal and Local		
		Type of Work: Sidewalks					Proposed Study: N/A		
Program Direction:							LAP: Yes	Lead Agency: Fort Lauderdale	
Cycle 7. Project will construct sidewalks, bike lanes, raised intersections, tighten turning radii and add a roundabout.							MTP Page # 5-30	MTP Timeframe: N/A	
PE	0	0	0	0	0	0	0	628,816	
PE-CST-LF	0	0	0	0	0	0	0	643,075	
CST	0	0	0	0	0	0	0	3,716,314	
Total	0	0	0	0	0	0	0	4,988,205	

City: FORT LAUDERDALE Ownership: Local Total Project Cost Estimate: 4,988,205

Phase	<2024	2024	2025	2026	2027	2028	Amount Funded	Funding Needed	
21 2023-New	Priority Tyler Street from N 21 Avenue and Young Circle - FM# Type of Work: Roadway Reconfiguration						Funding Source: Federal and Local Proposed Study: N/A Yes Yes Yes Yes LAP: Yes Lead Agency: Hollywood MTP Page # 5-30 MTP Timeframe: N/A		
	Program Direction: Cycle 7. Convert Tyler Street from a one-way (three west-bound lanes) to two-way (two west-bound and one east-bound lane) road, landscape bulbouts, crosswalks, traffic signalization, roadway and sidewalk improvements, utility, sharrow, crosswalk, drainage, intersection Improvements, landscape, lighting pedestrian.								
PE	0	0	0	0	0	0	0	603,980	
PE-CST-LF	0	0	0	0	0	0	0	1,785,800	
CST	0	0	0	0	0	0	0	3,848,145	
Total	0	0	0	0	0	0	0	6,237,925	
City: HOLLYWOOD						Ownership: Local	Total Project Cost Estimate: 6,237,925		
22 2023-New	Priority Josh Lee Boulevard - FM# Type of Work: Roadway Reconfiguration						Funding Source: Federal and Local Proposed Study: N/A Yes Yes Yes Yes LAP: Yes Lead Agency: Sunrise MTP Page # 5-30 MTP Timeframe: N/A		
	Program Direction: Cycle 7. Convert Josh Lee Blvd from a four-lane road to a two-lane road, replace existing sidewalk on the north side of the road with a multi-use path								
PE	0	0	0	0	0	0	0	744,186	
PE-CST-LF	0	0	0	0	0	0	0	492,791	
cst	0	0	0	0	0	0	0	2,912,466	
Total	0	0	0	0	0	0	0	4,149,443	
City: SUNRISE						Ownership: Local	Total Project Cost Estimate: 4,149,443		

CSMP

COMPLETE STREETS MASTER PLAN

PROGRAM



LEGEND:

 PRIORITIZED
CSMP PROJECTS



Phase	<2024	2024	2025	2026	2027	2028	Amount Funded	Funding Needed
-------	-------	------	------	------	------	------	---------------	----------------

01-A 2020-01	Priority	SR-817/UNIVERSITY DR FR N. OF SR-824/PEMBROKE RD TO N. OF JOHNSON ST - FM# 4435971				Funding Source: State		
		Type of Work: BIKE LANE/SIDEWALK		Proposed Study: N/A		Yes Yes Yes Yes		
Program Direction: Remove CARU funds, apply \$5 Million Earmark Funds							LAP: No	Lead Agency: FDOT
							MTP Page # 5-3	MTP Timeframe: N/A

2020 MPO CSMP PRIORITY #1 CITY OF PEMBROKE PINES BIKE LANE AND SIDEWALK PROJECT. SR-817/UNIVERSITY DRIVE; AT PEMBROKE ROAD & PINES BLVD SAFETY LIGHTING PROJECTS

CST	0	0	19,094,760	1,600,000	0	0	20,694,760	0
Total	0	0	19,094,760	1,600,000	0	0	20,694,760	0

City: PEMBROKE PINES Ownership: State Total Project Cost Estimate: 20,694,760

01-B 2023-01	Priority	SR-817/UNIVERSITY DRIVE FR S. OF SR-848/STIRLING RD TO N. OF SW 36 ST - FM# 4435972				Funding Source: State		
		Type of Work: BIKE LANES/SIDEWALK		Proposed Study: N/A		Yes Yes Yes Yes		
Program Direction: Project should be funded with State dollars only. Delay as necessary.							LAP: No	Lead Agency: FDOT
							MTP Page # 5-3	MTP Timeframe: N/A

2022 MPO CSMP PRIORITY #1 TOWN OF DAVIE BASED ON FEASIBILITY STUDY DONE UNDER 432066-3

PE	1,200,172	0	0	0	0	0	1,200,172	0
CST	0	0	0	0	0	13,486,471	13,486,471	0
Total	1,200,172	0	0	0	0	13,486,471	14,686,643	0

City: Davie Ownership: State Total Project Cost Estimate: 14,686,643

01-C 2020-02	Priority	SR-817/UNIVERSITY DRIVE FR N. OF SOUTHGATE BLVD TO N. OF RAMBLEWOOD DR - FM# 4435973				Funding Source: State		
		Type of Work: BIKE LANE/SIDEWALK		Proposed Study: N/A		Yes Yes Yes Yes		
Program Direction: Project should be funded with State dollars only. Delay as necessary.							LAP: No	Lead Agency: FDOT
							MTP Page # 5-3	MTP Timeframe: N/A

2020 MPO CSMP PRIORITY #2 CITY OF CORAL SPRINGS BASED ON FEASIBILITY STUDY DONE UNDER 432066-3 SR 817/UNIVERSITY DRIVE; AT SOUTHGATE BLVD SAFETY LIGHTING PROJECT NPV= \$20,991,198; B/C=17.1; SHSP=2 INTERSECTION CRASHES

CST	0	0	8,469,890	0	0	0	8,469,890	0
Total	0	0	8,469,890	0	0	0	8,469,890	0

City: CORAL SPRINGS Ownership: State Total Project Cost Estimate: 8,469,890

Phase	<2024	2024	2025	2026	2027	2028	Amount Funded	Funding Needed	
01-D 2021-05	SR-817/UNIVERSITY DR. FROM N. OF JOHNSON STREET TO S. OF STIRLING RD - FM# 4435974						Funding Source: State		
Priority	Type of Work: BIKE LANE/SIDEWALK						Proposed Study: N/A		
	Program Direction: Project should be funded with State dollars only. Delay as necessary.						LAP: No Lead Agency: FDOT MTP Page # 5-3 MTP Timeframe: N/A		
BASED ON FEASIBILITY STUDY DONE UNDER 432066-3 SR-817/UNIVERSITY DRIVE 2021 MPO CSMP PRIORITY #5									
CST	0	0	0	0	19,550,736	56,419	19,607,155	0	
Total	0	0	0	0	19,550,736	56,419	19,607,155	0	
City: PEMBROKE PINES						Ownership: State		Total Project Cost Estimate: 19,607,155	
02 2023-02	SR-834/SAMPLE RD. FROM BLOUNT RD TO NE 3RD AVE. - FM# 4514061						Funding Source: State		
Priority	Type of Work: BIKE LANE/SIDEWALK						Proposed Study: N/A		
	Program Direction:						LAP: No Lead Agency: FDOT MTP Page # 5-30 MTP Timeframe: N/A		
BUFFERED BICYCLE LANES, WIDER PEDESTRIAN ZONE (SIDEWALKS), PEDESTRIAN LEVEL LIGHTING. FEASIBILITY STUDY IS INCLUDED IN THE PROJECT FM # 446377.1									
PE	0	0	0	0	0	755,000	755,000	803,768	
CST	0	0	0	0	0	0	0	8,209,152	
Total	0	0	0	0	0	755,000	755,000	9,012,920	
City: Deerfield Beach/Pompano Beach						Ownership: State		Total Project Cost Estimate: 9,767,920	
03 2023-03	NW 31 AVE FROM BROWARD BLVD TO MCNAB RD - FM#						Funding Source: Federal		
Priority	Type of Work: Bike Lanes/Sidewalk						Proposed Study: N/A		
	Program Direction:						LAP: Yes Lead Agency: TBD MTP Page # 5-30 MTP Timeframe: N/A		
Mast Arms, pedestrian hybrid beacon - high intensity activated crosswalk signals, ADA improvements, 10' wide path (delineated with pedestrian and bicycle markings), signage, special emphasis crosswalks, landscape medians, raised crosswalks, and raised intersections.									
PE	0	0	0	0	0	0	0	650,000	
CST	0	0	0	0	0	0	0	6,000,000	
Total	0	0	0	0	0	0	0	6,650,000	
City: Fort Lauderdale/Lauderdale Lakes/Lauderhill/Oakland Park/Pompano Beach/Tamarac						Ownership: County		Total Project Cost Estimate: 6,650,000	

Phase	<2024	2024	2025	2026	2027	2028	Amount Funded	Funding Needed	
04 Priority 2023-04	SR-811/DIXIE HWY FROM SAMPLE RD. TO BROWARD/PALM BEACH CO. LINE - FM# 4514071						Funding Source: State		
	Type of Work: BIKE LANE/SIDEWALK						Proposed Study: N/A		
Program Direction: Project should be funded with State dollars only. Delay as necessary.							LAP: No MTP Page # 5-30	Lead Agency: FDOT MTP Timeframe: N/A	
FILL IN SIDEWALK GAPS, BUFFERED BICYCLE LANES, PEDESTRIAN LEVEL LIGHTING, STAMP CONCRETE INTERSECTIONS, TRANSITSHELTERS, OPPORTUNITIES FOR LANDSCAPING, REFUGE ISLANDS, TRAFFIC CALMING, FEASIBILITY STUDY IS INCLUDED IN THEPROJECT FM # 446377.1									
PE	0	0	0	0	0	755,000	755,000	1,903,169	
CST	0	0	0	0	0	0	0	19,222,004	
Total	0	0	0	0	0	755,000	755,000	21,125,173	
City: Deerfield Beach/Pompano Beach						Ownership: State		Total Project Cost Estimate: 21,880,173	
05 Priority 2023-05	OAKLAND PARK BLVD FROM HIATUS GREENWAY TO UNIVERSITY DR - FM#						Funding Source: Federal		
	Type of Work: Bike Lanes/Sidewalk						Proposed Study: N/A		
Program Direction: Reprogram CARU or SU funds.							LAP: Yes MTP Page # 5-30	Lead Agency: Sunrise MTP Timeframe: N/A	
BUFFERED/PROTECTED BICYCLE LANES, WIDE SIDEWALK ON NORTHSIDE, ADDITIONAL LIGHTING, MULTI-USE PATH ON SOUTH SIDE, TRANSIT SHELTERS, C-13 CANAL 10' TRAIL. FDOT RECOMMENDS ADMINISTERING AS LAP.									
PE	0	0	0	0	0	0	0	2,377,863	
CST	0	0	0	0	0	0	0	24,016,414	
Total	0	0	0	0	0	0	0	26,394,277	
City: Sunrise						Ownership: County		Total Project Cost Estimate: 26,394,277	
06 Priority 2023-06	SHERIDAN ST FROM DOUGLAS RD TO UNIVERSITY DR - FM#						Funding Source: Federal		
	Type of Work: Bike Lanes/Sidewalk						Proposed Study: N/A		
Program Direction:							LAP: Yes MTP Page # 5-30	Lead Agency: Cooper City MTP Timeframe: N/A	
BUFFERED BICYCLE LANES, MULTIUSE PATH ON THE NORTH SIDE.FDOT recommends administering as LAP.									
PE	0	0	0	0	0	0	0	300,359	
CST	0	0	0	0	0	0	0	3,082,292	
Total	0	0	0	0	0	0	0	3,382,651	
City: Cooper City						Ownership: Local		Total Project Cost Estimate: 3,382,651	

Phase	<2024	2024	2025	2026	2027	2028	Amount Funded	Funding Needed	
07 Priority 2023-08	MIRAMAR PKWY FROM SW 172 AVE TO DYKES RD - FM#						Funding Source: Federal		
	Type of Work: Bike Lanes/Sidewalk				Proposed Study: N/A		Yes Yes Yes Yes		
Program Direction: Reprogram CARU or SU funds.							LAP: Yes	Lead Agency: Miramar	
SEPARATED BICYCLE LANES, FURNISHING ZONE, MID BLOCK CROSSWALKS, TRANSIT AMERNITY IMPROVEMENTS. FDOT RECOMMENDS ADMINISTERING AS LAP.							MTP Page # 5-30	MTP Timeframe: N/A	
PE	0	0	0	0	0	0	0	779,479	
CST	0	0	0	0	0	0	0	7,107,018	
Total	0	0	0	0	0	0	0	7,886,497	
City: Miramar					Ownership: Local		Total Project Cost Estimate: 7,886,497		
08 Priority 2023-09	OAKLAND PARK BLVD FROM UNIVERSITY DR TO ROCK ISLAND ROAD - FM#						Funding Source: State		
	Type of Work: Bike Lanes/Sidewalk				Proposed Study: N/A		Yes Yes Yes Yes		
Program Direction:							LAP: No	Lead Agency: FDOT	
ENHANCED BUS CORRIDOR, BUFFERED BICYCLE LANES, WIDER PEDESTRIAN ZONE (SIDEWALKS), C-13 CANAL TRAIL. The project limits is included within the project limits for FM# 444673-1 SR-816/OAKLAND PARK BLVD from SR 817/University Drive to NW 31st Avenue: Oakland Park Blvd. Intermodal Development Study to Improve the Intermodal Access along the Corridor with Dedicated Bus Lanes and Improved Access to Local Transit Services.							MTP Page # 5-30	MTP Timeframe: N/A	
PE	0	0	0	0	0	0	0	840,000	
CST	0	0	0	0	0	0	0	6,700,000	
Total	0	0	0	0	0	0	0	7,540,000	
City: Lauderdale/Sunrise					Ownership: State		Total Project Cost Estimate: 7,540,000		
09 Priority 2023-10	PEMBROKE RD FROM FLAMINGO RD TO DOUGLAS RD - FM#						Funding Source: Federal		
	Type of Work: Bike Lanes/Sidewalk				Proposed Study: N/A		Yes Yes Yes Yes		
Program Direction:							LAP: Yes	Lead Agency: Pembroke Pines	
BUFFERED BICYCLE LANES, WIDER PEDESTRIAN ZONE (SIDEWALKS), PEMBROKE PINES/HOLLYWOOD TRAIL							MTP Page # 5-30	MTP Timeframe: N/A	
PE	0	0	0	0	0	0	0	840,000	
CST	0	0	0	0	0	0	0	7,540,000	
Total	0	0	0	0	0	0	0	8,380,000	
City: Miramar/Pembroke Pines					Ownership: Local		Total Project Cost Estimate: 8,380,000		

Phase	<2024	2024	2025	2026	2027	2028	Amount Funded	Funding Needed	
13 Priority 2023-14	ROYAL PALM BLVD FROM CORAL SPRINGS DR TO RIVERSIDE DR - FM#						Funding Source: Federal		
	Type of Work: Bike Lanes/Sidewalk				Proposed Study: N/A		Yes Yes Yes Yes		
Program Direction:							LAP: Yes	Lead Agency: Coral Springs	
BUFFERED BIKE LANES, 10' MULTIUSE PATH WITH PEDESTRIAN LIGHTING, TRANSIT AMENITIES, FURNISHING ZONE. Projects FM# 4495591 ROYAL PALM BLVD FROM UNIVERSITY DRIVE TO RIVERSIDE DRIVE, and FM# 4495621 SR-817/UNIVERSITY DR @ ROYAL PALM BLVD fall within project limits.							MTP Page # 5-30	MTP Timeframe: N/A	
PE	0	0	0	0	0	0	0	1,721,936	
CST	0	0	0	0	0	0	0	15,095,642	
Total	0	0	0	0	0	0	0	16,817,578	
City: Coral Springs					Ownership: Local		Total Project Cost Estimate: 16,817,578		
14 Priority 2023-15	NW 6 St from NW 31 Ave to NE 15 Ave - FM#						Funding Source: Federal		
	Type of Work: Bike Lanes/Sidewalk				Proposed Study: N/A		Yes No Yes Yes		
Program Direction:							LAP: Yes	Lead Agency: Fort Lauderdale	
BUFFERED BIKE LANES WITH LANE WIDTH REDUCTION, SHARED USE/MULTIUSE PATH, TRANSIT AMENITIES, LIGHTING IMPROVEMENTS, ROUNDABOUTS, TRAFFIC CALMING							MTP Page # 5-30	MTP Timeframe: N/A	
PE	0	0	0	0	0	0	0	763,558	
CST	0	0	0	0	0	0	0	7,128,537	
Total	0	0	0	0	0	0	0	7,892,095	
City: Fort Lauderdale					Ownership: Local/County		Total Project Cost Estimate: 7,892,095		
15 Priority 2023-16	ROYAL PALM BLVD. FROM RIVERSIDE DR TO SR-7/US-441. - FM#						Funding Source: Federal		
	Type of Work: Bike Lanes/Sidewalk				Proposed Study: N/A		No No Yes Yes		
Program Direction:							LAP: Yes	Lead Agency: Margate	
FILL IN SIDEWALK GAPS, BUFFERED BIKE LANES, CONTINUOUS FURNISHING ZONE							MTP Page # 5-30	MTP Timeframe: N/A	
PE	0	0	0	0	0	0	0	1,375,564	
CST	0	0	0	0	0	0	0	14,049,093	
Total	0	0	0	0	0	0	0	15,424,657	
City: Margate/Coral Springs					Ownership: Local		Total Project Cost Estimate: 15,424,657		

PROGRAM THRESHOLD

Phase	<2024	2024	2025	2026	2027	2028	Amount Funded	Funding Needed	
16 Priority 2023-17	Miramar Pkwy. from Douglas Rd. to SR-7 - FM# Type of Work: Bike Lanes/Sidewalk						Funding Source: Federal Proposed Study: N/A LAP: Yes MTP Page # 5-30		
Program Direction:							Lead Agency: Broward County MTP Timeframe: N/A		
8 FT. SIDEWALKS ON BOTH SIDES, TRANSIT AMENITY IMPROVEMENTS									
PE	0	0	0	0	0	0	0	439,987	
CST	0	0	0	0	0	0	0	3,577,788	
Total	0	0	0	0	0	0	0	4,017,775	
City: Miramar						Ownership: Local/County	Total Project Cost Estimate: 4,017,775		
17 Priority 2023-18	Atlantic Blvd. from NW 31 Ave to NW 6th Ave - FM# Type of Work: Bike Lanes/Sidewalk						Funding Source: State Proposed Study: N/A LAP: No MTP Page # 5-30		
Program Direction:							Lead Agency: FDOT MTP Timeframe: N/A		
PEDESTRIAN LIGHTING, TRANSIT AMENITY IMPROVEMENTS, SIDEWALK WIDENING									
PE	0	0	0	0	0	0	0	692,987	
CST	0	0	0	0	0	0	0	6,318,415	
Total	0	0	0	0	0	0	0	7,011,402	
City: Pompano Beach						Ownership: State	Total Project Cost Estimate: 7,011,402		
18 Priority 2023-19	SW 81st Ave. from NW 62nd St. / Bailey Rd. to Southgate Blvd. - FM# Type of Work: Bike Lanes/Sidewalk						Funding Source: Federal Proposed Study: N/A LAP: Yes MTP Page # 5-30		
Program Direction:							Lead Agency: North Lauderdale MTP Timeframe: N/A		
2 ROUNDABOUTS IN CORRIDOR FOR TRAFFIC CALMING, SHARROWS, SEPARATED BIKE LANES, SPEED REDUCTION, TRANSIT AMENITY IMPROVEMENTS									
PE	0	0	0	0	0	0	0	514,913	
CST	0	0	0	0	0	0	0	4,187,052	
Total	0	0	0	0	0	0	0	4,701,965	
City: North Lauderdale						Ownership: Local	Total Project Cost Estimate: 4,701,965		

Phase	<2024	2024	2025	2026	2027	2028	Amount Funded	Funding Needed	
19 2023-20	Priority	NE 3rd Ave. from Sample Rd. to Hillsboro Blvd. - FM#					Funding Source: Federal		
		Type of Work: Bike Lanes/Sidewalk					Proposed Study: N/A		
Program Direction:							Yes Yes Yes Yes LAP: Yes Lead Agency: Deerfield Beach MTP Page # 5-30 MTP Timeframe: N/A		
LANE REDUCTION, PEDESTRIAN LIGHTNING, TRAFFIC CALMING, ROUNDABOUTS, SHARED USE PATH, TRANSIT AMENITYIMPROVEMENTS									
PE	0	0	0	0	0	0	0	1,008,552	
CST	0	0	0	0	0	0	0	8,978,142	
Total	0	0	0	0	0	0	0	9,986,694	
City: Deerfield Beach/ Pompano Beach					Ownership: Local		Total Project Cost Estimate: 9,986,694		
20 2023-21	Priority	Coral Springs Drive from Ramblewood Dr. to Wiles Rd. - FM#					Funding Source: Federal		
		Type of Work: Bike Lanes/Sidewalk					Proposed Study: N/A		
Program Direction:							Yes yes Yes Yes LAP: Yes Lead Agency: Broward County MTP Page # 5-30 MTP Timeframe: N/A		
TRANSIT AMENITY IMPROVEMENTS, PEDESTRIAN LIGHTING, SIDEWALK IMPROVEMENTS, BUFFERED BIKE LANES									
PE	0	0	0	0	0	0	0	1,056,942	
CST	0	0	0	0	0	0	0	11,062,660	
Total	0	0	0	0	0	0	0	12,119,602	
City: Coral Springs					Ownership: County		Total Project Cost Estimate: 12,119,602		
21 2023-22	Priority	Nob Hill Road from Sunset Strip to NW 44 St - FM#					Funding Source: Federal		
		Type of Work: Bike Lanes/Sidewalk					Proposed Study: N/A		
Program Direction:							No No Yes Yes LAP: Yes Lead Agency: Sunrise MTP Page # 5-30 MTP Timeframe: N/A		
GRADE SEPARATED BIKE LANE, CONTINUOUS FURNISHING ZONE, PEDESTRIAN LIGHTING, TRANSIT AMENITY IMPROVEMENTS									
PE	0	0	0	0	0	0	0	832,680	
CST	0	0	0	0	0	0	0	8,504,439	
Total	0	0	0	0	0	0	0	9,337,119	
City: Sunrise					Ownership: Local		Total Project Cost Estimate: 9,337,119		

Phase	<2024	2024	2025	2026	2027	2028	Amount Funded	Funding Needed	
22 Priority 2023-23	NW 44th St. from SR-7 to NW 21st Ave. - FM#						Funding Source: Federal		
	Type of Work: Bike Lanes/Sidewalk						Proposed Study: N/A		
	Program Direction:						LAP: Yes No No Yes No MTP Page # 5-30 Lead Agency: TBD MTP Timeframe: N/A		
LANE REDUCTION, PEDESTRIAN LIGHTING, PROTECTED/ BUFFERED BIKE LANES, MID BLOCK CROSSINGS									
PE	0	0	0	0	0	0	0	787,604	
CST	0	0	0	0	0	0	0	8,191,085	
Total	0	0	0	0	0	0	0	8,978,689	
City: Lauderdale Lakes/ Oakland Park						Ownership: Local		Total Project Cost Estimate: 8,978,689	
23 Priority 2023-24	N 29 Ave from Sheridan St. to Sterling Rd. - FM#						Funding Source: Federal		
	Type of Work: Bike Lanes/Sidewalk						Proposed Study: N/A		
	Program Direction:						LAP: Yes Yes Yes Yes Yes MTP Page # 5-30 Lead Agency: Hollywood MTP Timeframe: N/A		
LANE ELIMINATION, PEDESTRIAN LIGHTING, WIDENING SIDEWALKS, PROTECTED/BUFFERED BIKE LANES, LANDSCAPE OPPORTUNITY AREAS (FURNISHING ZONE)									
PE	0	0	0	0	0	0	0	841,790	
CST	0	0	0	0	0	0	0	8,810,734	
Total	0	0	0	0	0	0	0	9,652,524	
City: Hollywood						Ownership: Local		Total Project Cost Estimate: 9,652,524	
24 Priority 2023-25	McNab Rd. from NW 31 AVE to Dixie Hwy - FM#						Funding Source: Federal		
	Type of Work: Bike Lanes/Sidewalk						Proposed Study: N/A		
	Program Direction:						LAP: Yes No No Yes No MTP Page # 5-30 Lead Agency: TBD MTP Timeframe: N/A		
LANE ELIMINATION, WIDEN MEDIANS, LANDSCAPING OPPORTUNITY AREAS, SEPARATED BICYCLE LANES, CONTINUOUS PEDESTRIAN ZONES, TRANSIT AMENITY IMPROVEMENTS, PEDESTRIAN LEVEL LIGHTING, MID BLOCK CROSSINGS									
PE	0	0	0	0	0	0	0	1,455,299	
CST	0	0	0	0	0	0	0	14,863,452	
Total	0	0	0	0	0	0	0	16,318,751	
City: Pompano Beach/ Fort Lauderdale						Ownership: County		Total Project Cost Estimate: 16,318,751	

Phase	<2024	2024	2025	2026	2027	2028	Amount Funded	Funding Needed	
25 Priority	SW 172 Ave from Bass Creek Rd. to Pembroke Rd - FM#						Funding Source: Federal		
2023-26	Type of Work: Bike Lanes/Sidewalk			Proposed Study: N/A			Yes Yes Yes Yes		
Program Direction:							LAP: Yes	Lead Agency: Miramar	
PEDESTRIAN LIGHTING, TRANSIT AMENITY IMPROVEMENTS SEPARATED/BUFFERED BIKE LANES, SHARED USE PATH							MTP Page # 5-30	MTP Timeframe: N/A	
PE	0	0	0	0	0	0	0	776,397	
CST	0	0	0	0	0	0	0	7,078,915	
Total	0	0	0	0	0	0	0	7,855,312	
City: Miramar					Ownership: Local		Total Project Cost Estimate: 7,855,312		

DRAFT

Phase	<2024	2024	2025	2026	2027	2028	Amount Funded	Funding Needed
01	Broward Commuter Rail South Stations - FM#						Funding Source: STATE AND FEDERAL	
2023-New	Type of Work: Transit Station						Proposed Study: Planning	
<p>Program Direction: Reprogram SU and CARU funds. All funds flex to MPO. MPO leads the project. Allocate \$1,914,000 of CARU to FY 2025 (take from FM# 4435971 construction phase) to fund PE phase. Allocate \$6 million (take from FM# 4435972 construction phase) and \$3,570,000 to FY 2028 and 2029 respectively to support construction phase.</p> <p>Planning of transit stations for BCR South in Fort Lauderdale, Hallandale Beach, and Hollywood.</p>							<p>LAP: No Lead Agency: Broward MPO</p> <p>MTP Page # 5-30 MTP Timeframe: N/A</p>	
PE	0	0	0	0	0	0	0	1,914,000
CST	0	0	0	0	0	0	0	9,570,000
Total	0	0	0	0	0	0	0	11,484,000
City: Fort Lauderdale, Hallandale Beach, Hollywood					Ownership: N/A		Total Project Cost Estimate: 11,484,000	

DRAFT

ROADWAY

PROGRAM



LEGEND:

 PRIORITIZED ROADWAY PROJECTS



Phase	<2024	2024	2025	2026	2027	2028	Amount Funded	Funding Needed
-------	-------	------	------	------	------	------	---------------	----------------

01 2023-New	Priority	Museum of Discovery and Science Educational Transportation Exhibit - FM#					Funding Source: Federal		
		Type of Work: Educational Exhibit					Proposed Study: N/A		
Program Direction: Reprogram SU funds in FY 2025.							LAP: N/A	Lead Agency: Broward MPO	
							MTP Page # 5-20	MTP Timeframe: 2025	
Develop an interactive public engagement transportation exhibit highlighting resiliency and how to address the impacts of climate change on Browards transportation system.									
PLN	0	0	0	0	0	0	0	1,271,186	
Total	0	0	0	0	0	0	0	1,271,186	

City: Fort Lauderdale Ownership: N/A Total Project Cost Estimate: 1,271,186

02 2023-02	Priority	SR-5/US-1 @ SR-838/SUNRISE BOULEVARD - FM# 4419551					Funding Source: STATE		
		Type of Work: PD&E/EMO STUDY					Proposed Study: PD&E		
Program Direction:							LAP: No	Lead Agency: FDOT	
							MTP Page # 5-4	MTP Timeframe: 2021-2025	
2022 MPO ROADWAY PRIORITY #2 @ GATEWAY THEATER R/W NEEDED									
PDE	2,010,000	0	0	0	0	0	2,010,000	0	
PE	0	0	2,026,112	0	0	0	2,026,112	0	
CST	0	0	0	0	0	0	0	19,439,122	
Total	2,010,000	0	2,026,112	0	0	0	4,036,112	19,439,122	

City: Fort Lauderdale Ownership: State Total Project Cost Estimate: 23,475,234

03 2023-03	Priority	SR-820/PINES BLVD FROM US-27 TO NW 196TH AVE - FM# 4449771					Funding Source: STATE		
		Type of Work: PD&E/EMO STUDY					Proposed Study: PD&E		
Program Direction: Project should be funded with State dollars only. Delay as necessary.							LAP: No	Lead Agency: FDOT	
							MTP Page # 5-4	MTP Timeframe: 2021-2025	
2022 MPO ROADWAY PRIORITY #3 4L TO 6L; NO R/W NEEDED									
PDE	100,000	0	800,000	1,200,000	0	0	2,100,000	0	
PE	0	0	0	0	2,093,626	0	2,093,626	0	
CST	0	0	0	0	0	0	0	8,481,698	
Total	100,000	0	800,000	1,200,000	2,093,626	0	4,193,626	8,481,698	

City: Pembroke Pines Ownership: State Total Project Cost Estimate: 12,675,324

State Funds	Federal Funds	Local Funds	Federal, State, and Local Funds
State and Local Funds	State and Federal Funds	Federal and Local Funds	

Phase	<2024	2024	2025	2026	2027	2028	Amount Funded	Funding Needed
-------	-------	------	------	------	------	------	---------------	----------------

04 2023-04	Priority SR-820/PINES BLVD. @ SR-823/FLAMINGO RD - FM# 4080462	Type of Work: PD&E/EMO STUDY					Proposed Study: PD&E			Funding Source: STATE		
	Program Direction:						LAP: No MTP Page # 5-4			Lead Agency: FDOT MTP Timeframe: 2021-2025		

2022 MPO ROADWAY PRIORITY #4 IS R/W NEEDED

PDE	0	520,000	590,000	180,000	0	0	1,290,000	0
PE	0	0	0	0	3,286,599	312,981	3,599,580	3,690,420
ROW	0	0	0	0	0	0	0	45,000,000
CST	0	0	0	0	0	0	0	45,000,000
Total	0	520,000	590,000	180,000	3,286,599	312,981	4,889,580	93,690,420

City: Pembroke Pines Ownership: State Total Project Cost Estimate: 98,580,000

05 2023-05	Priority SR-845/POWERLINE RD FROM SW 10TH ST TO BROWARD/PALM BEACH COUNTY LINE - FM# 4463781	Type of Work: PD&E/EMO STUDY					Proposed Study: PD&E			Funding Source: STATE		
	Program Direction: Project should be funded with State dollars only. Delay as necessary.						LAP: No MTP Page # 5-11			Lead Agency: FDOT MTP Timeframe: 2025		

2022 MPO ROADWAY PRIORITY# 5 WIDEN FROM 4 TO 6 LANES IS R/W NEEDED

PDE	0	0	520,000	1,520,000	0	0	2,040,000	0
PE	0	0	0	0	0	2,616,910	2,616,910	0
ROW	0	0	0	0	0	0	0	11,710,602
CST	0	0	0	0	0	0	0	11,710,602
Total	0	0	520,000	1,520,000	0	2,616,910	4,656,910	23,421,204

City: Ownership: State Total Project Cost Estimate: 28,078,114

Phase	<2024	2024	2025	2026	2027	2028	Amount Funded	Funding Needed
-------	-------	------	------	------	------	------	---------------	----------------

06 2023-06	Priority SR-7/US-441 @ SR-870/COMMERCIAL BLVD - FM# 4463801 Type of Work: PD&E/EMO STUDY						Proposed Study: PD&E	Funding Source: STATE	
		Program Direction: 2022 MPO ROADWAY PRIORITY# 6 IS R/W NEEDED					LAP: No MTP Page # 5-17		Lead Agency: FDOT MTP Timeframe: 2031-2035
PDE	0	0	600,000	2,000,000	0	0	2,600,000	0	
PE	0	0	0	0	0	0	0	32,560,000	
ROW	0	0	0	0	0	0	0	148,000,000	
CST	0	0	0	0	0	0	0	148,000,000	
Total	0	0	600,000	2,000,000	0	0	2,600,000	328,560,000	
City:						Ownership: State	Total Project Cost Estimate: 331,160,000		

07 2023-07	Priority SW 130TH AVE FROM SW 8TH ST TO SR-84 - FM# 4463811 Type of Work: FEASIBILITY STUDY						Proposed Study: Feasibility	Funding Source: FEDERAL	
		Program Direction: 2022 MPO ROADWAY PRIORITY# 7 IS R/W NEEDED					LAP: No MTP Page # 5-16		Lead Agency: FDOT MTP Timeframe: 2026-2030
PDE	0	0	500,000	0	0	0	500,000	0	
PE	0	0	0	0	0	760,000	760,000	0	
CST	0	0	0	0	0	0	0	5,394,800	
Total	0	0	500,000	0	0	760,000	1,260,000	5,394,800	
City: Davie						Ownership: Local	Total Project Cost Estimate: 6,654,800		

Phase	<2024	2024	2025	2026	2027	2028	Amount Funded	Funding Needed
-------	-------	------	------	------	------	------	---------------	----------------

08 2023-08	Priority SW 136TH AVE FROM SW 26TH ST. TO SW 6TH CT - FM# 4523691 Type of Work: PD&E/EMO STUDY	Proposed Study: PD&E	Funding Source: FEDERAL Yes Yes Yes Yes					
----------------------	---	----------------------	--	--	--	--	--	--

Program Direction: LAP: No Lead Agency: FDOT
 MTP Page # 5-16 MTP Timeframe: 2026-2030

2022 MPO HIGHWAY PRIORITY# 8 WIDEN 2 TO 4 LANES IS R/W NEEDED

PDE	0	0	505,000	1,750,000	0	0	2,255,000	0
PE	0	0	0	0	0	10,000	10,000	2,405,320
CST	0	0	0	0	0	2,500,000	2,500,000	10,706,000
Total	0	0	505,000	1,750,000	0	2,510,000	4,765,000	13,111,320

City: Davie Ownership: Local Total Project Cost Estimate: 17,876,320

09 2023-09	Priority SR-822/SHERIDAN STREET FROM DIXIE HIGHWAY TO SR-5/US 1 - FM# 4479221 Type of Work: PD&E/EMO STUDY	Proposed Study: PD&E	Funding Source: STATE Yes Yes Yes Yes					
----------------------	---	----------------------	--	--	--	--	--	--

Program Direction: LAP: No Lead Agency: FDOT
 MTP Page # 5-11 MTP Timeframe: 2025

2022 MPO ROADWAY PRIORITY # 9 IS R/W NEEDED

PDE	0	0	0	505,000	2,000,000	0	2,505,000	0
PE	0	0	0	0	0	0	0	941,147
ROW	0	0	0	0	0	0	0	38,332,475
CST	0	0	0	0	0	0	0	4,277,940
Total	0	0	0	505,000	2,000,000	0	2,505,000	43,551,562

City: Dania Beach/Hollywood Ownership: State Total Project Cost Estimate: 46,056,562

Phase	<2024	2024	2025	2026	2027	2028	Amount Funded	Funding Needed	
10 Priority 2023-10	Hollywood Blvd from US-1 to SR-A1A - FM#						Funding Source: State		
	Type of Work: Resiliency Study						Proposed Study: Resiliency		
							Yes N/A Yes Yes LAP: No Lead Agency: FDOT MTP Page # 5-13 MTP Timeframe: 2026-2030		
Program Direction: Planning study funded in FY23 UPWP									
Conduct study to determine resiliency improvements. Planning study included in 4481321 SOUTHEAST BROWARD RESILIENCY STUDY - PHASE 1 - MULTIPLE LOCATIONS. Resiliency project to address known climate stressors: storm surge, sea level rise, flooding, and heat. Sponsor: Broward MPO									
PE	0	0	0	0	0	0	0	1,350,000	
Total	0	0	0	0	0	0	0	1,350,000	
City: Hollywood						Ownership: State		Total Project Cost Estimate: 1,350,000	
11 Priority 2023-11	SR-A1A from South of Arizona St to Hallandale Beach Blvd - FM#						Funding Source: State		
	Type of Work: Resiliency Study						Proposed Study: Resiliency		
							Yes N/A Yes Yes LAP: No Lead Agency: FDOT MTP Page # 5-13 MTP Timeframe: 2026-2030		
Program Direction: Use SU for PLN phase only. MPO to lead PLN study. Fund PLN phase in FY 2025.									
Conduct study to determine resiliency improvements. Drainage improvements programmed in FM# 4485741, 4488761, 4485771. Project Sponsor: Broward MPO									
PLN	0	0	0	0	0	0	0	150,000	
PE	0	0	0	0	0	0	0	1,350,000	
Total	0	0	0	0	0	0	0	1,500,000	
City: Hallandale Beach						Ownership: State		Total Project Cost Estimate: 1,500,000	
12 Priority 2023-12	US-1/SR-5 from Las Olas Blvd to Davie Blvd - FM#						Funding Source: State		
	Type of Work: Resiliency Study						Proposed Study: Resiliency		
							Yes N/A Yes Yes LAP: No Lead Agency: FDOT MTP Page # 5-13 MTP Timeframe: 2026-2030		
Program Direction: Use SU for PLN phase only. MPO to lead PLN study. Fund PLN phase in FY 2026.									
Conduct study to determine resiliency improvements. Planning study included in 4480881 SR-5/US-1 FT LAUDERDALE RESILIENCY STUDY - PHASE 1. Resiliency project to address known climate stressors: storm surge, sea level rise, flooding, and heat. PLN \$150,000 PE \$1,350,000. Project Sponsor: Broward MPO									
PLN	0	0	0	0	0	0	0	150,000	
PE	0	0	0	0	0	0	0	1,350,000	
Total	0	0	0	0	0	0	0	1,500,000	
City: Fort Lauderdale						Ownership: State		Total Project Cost Estimate: 1,500,000	

Phase	<2024	2024	2025	2026	2027	2028	Amount Funded	Funding Needed
-------	-------	------	------	------	------	------	---------------	----------------

13 2023-13	Priority	US-1 from Broward Blvd to Las Olas Blvd - FM#		Proposed Study: Resiliency			Funding Source: State	
		Type of Work: Resiliency Study					Yes	N/A
Program Direction: Use SU for PLN phase only. MPO to lead PLN study. Fund PLN phase in FY 2027.							LAP: No	Lead Agency: FDOT
							MTP Page # 5-13	MTP Timeframe: 2026-2030
Conduct study to determine resiliency improvements. Planning study included in 4480881 SR-5/US-1 FT LAUDERDALE RESILIENCY STUDY - PHASE 1. Conduct study to determine resiliency improvements. Planning study included in 4480881 SR-5/US-1 FT LAUDERDALE RESILIENCY STUDY - PHASE 1. Resiliency project to address known climate stressors: storm surge, sea level rise, flooding, and heat. PLN \$150,000 PE \$1,350,000. Project Sponsor: Broward MPO Project Sponsor: Broward MPO								
PLN	0	0	0	0	0	0	0	150,000
PE	0	0	0	0	0	0	0	1,350,000
Total	0	0	0	0	0	0	0	1,500,000
City: Fort Lauderdale				Ownership: State			Total Project Cost Estimate: 1,500,000	

14 2023-14	Priority	Las Olas Blvd. from US-1 to SR-A1A - FM#		Proposed Study: Resiliency			Funding Source: State	
		Type of Work: Resiliency Study					Yes	N/A
Program Direction:							LAP: No	Lead Agency: FDOT
							MTP Page # 5-13	MTP Timeframe: 2026-2030
Conduct study to determine resiliency improvements. Project Sponsor: Broward MPO								
PE	0	0	0	0	0	0	0	1,500,000
Total	0	0	0	0	0	0	0	1,500,000
City: Fort Lauderdale				Ownership: State/Local			Total Project Cost Estimate: 1,500,000	

15 2023-15	Priority	US-1 from Pembroke Rd to Hallandale Beach Blvd - FM#		Proposed Study: Resiliency			Funding Source: State	
		Type of Work: Resiliency Study					Yes	N/A
Program Direction: Use SU for PLN phase only. MPO to lead PLN study. Fund PLN phase in FY 2028.							LAP: No	Lead Agency: FDOT
							MTP Page # 5-13	MTP Timeframe: 2026-2030
Conduct study to determine resiliency improvements. Planning study included in 4481321 SOUTHEAST BROWARD RESILIENCY STUDY - PHASE 1 - MULTIPLE LOCATIONS. Resiliency project to address known climate stressors: storm surge, sea level rise, flooding, and heat. PLN \$150,000 PE \$1,350,000. Project Sponsor: Broward MPO								
PLN	0	0	0	0	0	0	0	150,000
PE	0	0	0	0	0	0	0	1,350,000
Total	0	0	0	0	0	0	0	1,500,000
City: Hallandale Beach				Ownership: State			Total Project Cost Estimate: 1,500,000	

Phase	<2024	2024	2025	2026	2027	2028	Amount Funded	Funding Needed		
16 2023-16	Hallandale Beach Blvd From US-1 to SR-A1A - FM#						Funding Source: State			
	Type of Work: Resiliency Study						Proposed Study: Resiliency			
Program Direction: Use SU for PLN phase only. MPO to lead PLN study. Fund PLN phase in FY 2029.							LAP: No		Lead Agency: FDOT	
MTP Page # 5-13							MTP Timeframe: 2026-2030			
Conduct study to determine resiliency improvements. Planning study included in 4481321 SOUTHEAST BROWARD RESILIENCY STUDY - PHASE 1 - MULTIPLE LOCATIONS. Resiliency project to address known climate stressors: storm surge, sea level rise, flooding, and heat. PLN \$150,000 PE \$1,350,000. Project Sponsor: Broward MPO										
PLN	0	0	0	0	0	0	0	150,000		
PE	0	0	0	0	0	0	0	1,350,000		
Total	0	0	0	0	0	0	0	1,500,000		
City: Hallandale Beach					Ownership: State		Total Project Cost Estimate: 1,500,000			
17 2023-17	SR-811/DIXIE HWY FROM SR-816/OAKLAND PARK BLVD TO PROSPECT RD - FM# 4493311						Funding Source: State			
	Type of Work: FEASIBILITY STUDY						Proposed Study: Feasibility			
Program Direction:							LAP: No		Lead Agency: FDOT	
MTP Page # 5-13							MTP Timeframe: 2026-2030			
2022 MPO ROADWAY PRIORITY #17 MULTIMODAL FEASIBILITY CORRIDOR STUDY UPGRADES FOR PEDESTRIANS AND BICYCLISTS										
PDE	0	0	0	0	200,000	0	200,000	0		
PE	0	0	0	0	0	0	0	400,000		
Total	0	0	0	0	200,000	0	200,000	400,000		
City: Oakland Park					Ownership: State		Total Project Cost Estimate: 600,000			
18 2023-18	SE 10th St from Dixie Hwy to US-1 - FM#						Funding Source: State			
	Type of Work: Feasibility Study						Proposed Study: Feasibility			
Program Direction:							LAP: No		Lead Agency: FDOT	
MTP Page # 5-14							MTP Timeframe: 2026-2030			
Conduct multimodal feasibility study. The City is concerned that once 10th street improvements are completed, additional trips will occur eastbound and the current roadway cannot handle this increase at this time. Project Sponsor: City of Deerfield Beach										
PE	0	0	0	0	0	0	0	750,000		
Total	0	0	0	0	0	0	0	750,000		
City: Deerfield Beach					Ownership: State/Local		Total Project Cost Estimate: 750,000			

Phase	<2024	2024	2025	2026	2027	2028	Amount Funded	Funding Needed	
19	County Line Rd/HEFT Extension from I-95 to Florida's Turnpike - FM#						Funding Source: State		
2023-19	Type of Work: Feasibility study			Proposed Study: Feasibility			Yes N/A Yes Yes		
Program Direction:							LAP: No	Lead Agency: FDOT	
Conduct multimodal feasibility study. Coordination will be needed with FDOT District 6. Project Sponsor: Broward MPO							MTP Page # 5-14	MTP Timeframe: 2026-2030	
PE	0	0	0	0	0	0	0	1,500,000	
Total	0	0	0	0	0	0	0	1,500,000	
City: Miramar/Pembroke Park/West Park					Ownership: State		Total Project Cost Estimate: 1,500,000		
20	Pompano Beach FEC-SFRC connection - FM#						Funding Source: State		
2023-20	Type of Work: New track connection			Proposed Study: PD&E			Yes Yes Yes Yes		
Program Direction:							LAP: No	Lead Agency: FDOT	
Construct track connection between FEC rail corridor and SFRC at Pompano Beach. Project requires buy in from FEC & CSX. FM# 417031-9. Project Sponsor: SFRTA							MTP Page # 5-14	MTP Timeframe: 2026-2030	
PE	0	0	0	0	0	0	0	7,700,000	
ROW	0	0	0	0	0	0	0	35,000,000	
CST	0	0	0	0	0	0	0	35,000,000	
Total	0	0	0	0	0	0	0	77,700,000	
City: Pompano Beach					Ownership: State		Total Project Cost Estimate: 77,700,000		
21	Griffin Rd @ Old Griffin Rd intersection - FM#						Funding Source: State		
2023-21	Type of Work: Intersection Improvement			Proposed Study: N/A			Yes Yes Yes Yes		
Program Direction:							LAP: No	Lead Agency: FDOT	
Construct interim reconfiguration of north approach to intersection. Project Sponsor: FDOT							MTP Page # 5-14	MTP Timeframe: 2026-2030	
PE	0	0	0	0	0	0	0	440,000	
ROW	0	0	0	0	0	0	0	2,000,000	
CST	0	0	0	0	0	0	0	2,000,000	
Total	0	0	0	0	0	0	0	4,440,000	
City: Dania Beach					Ownership: State		Total Project Cost Estimate: 4,440,000		

Phase	<2024	2024	2025	2026	2027	2028	Amount Funded	Funding Needed	
22 2023-22	Priority	Florida's Turnpike Interchange @ Griffin Rd/Orange Dr - FM#					Funding Source: State		
		Type of Work: Interchange Improvements				Proposed Study: N/A	Yes Yes Yes Yes		
Program Direction:							LAP: No	Lead Agency: FDOT	
Construct improvements to interchange. The Orange Drive, Griffin Road, Turnpike interchange is congested and confusing. Project goes with FM# 406095-4. Project Sponsor: Town of Davie							MTP Page # 5-14	MTP Timeframe: 2026-2030	
PE	0	0	0	0	0	0	0	9,240,000	
CST	0	0	0	0	0	0	0	42,000,000	
Total	0	0	0	0	0	0	0	51,240,000	
City: Davie					Ownership: State		Total Project Cost Estimate: 51,240,000		
23 2023-23	Priority	SR-810/Oakland Park Blvd @ SR-7/US-441 - FM#					Funding Source: State		
		Type of Work: Intersection Improvement				Proposed Study: PD&E	Yes Yes Yes Yes		
Program Direction: Move funds from Roadway Priority 45 (Pines Blvd @ University Dr CTO, FM# 4465871) to Roadway Priority 23 (Oakland Park Blvd @ SR-7 CTO)							LAP: No	Lead Agency: FDOT	
Construct center turn overpass. Project is associated with TSM&O/Safety Project "SR-810/Oakland Park Blvd @ SR-7/US-441". Project Sponsor: Broward MPO							MTP Page # 5-14	MTP Timeframe: 2026-2030	
PE	0	0	0	0	0	0	0	9,900,000	
ROW	0	0	0	0	0	0	0	45,000,000	
CST	0	0	0	0	0	0	0	45,000,000	
Total	0	0	0	0	0	0	0	99,900,000	
City: Lauderdale Lakes					Ownership: State		Total Project Cost Estimate: 99,900,000		
24 2023-24	Priority	US-1/SR-5 from McNab Rd/15th St to Cypress Creek Rd/62nd St - FM#					Funding Source: State		
		Type of Work: Add eastbound left turn lane				Proposed Study: N/A	Yes No Yes No		
Program Direction:							LAP: No	Lead Agency: FDOT	
Add eastbound left-turn lane. Project Sponsor: FDOT							MTP Page # 5-14	MTP Timeframe: 2026-2030	
PE	0	0	0	0	0	0	0	441,980	
CST	0	0	0	0	0	0	0	2,009,000	
Total	0	0	0	0	0	0	0	2,450,980	
City: Fort Lauderdale					Ownership: State		Total Project Cost Estimate: 2,450,980		

State Funds	Federal Funds	Local Funds	Federal, State, and Local Funds
State and Local Funds	State and Federal Funds	Federal and Local Funds	

Phase	<2024	2024	2025	2026	2027	2028	Amount Funded	Funding Needed
-------	-------	------	------	------	------	------	---------------	----------------

25 2023-25	Priority	SR-817/UNIVERSITY DR @ ROYAL PALM BLVD. - FM# 4495621					Funding Source: State		
		Type of Work: ADD LEFT TURN LANE(S)					Proposed Study: PD&E		
<p>Program Direction: Fold Systems Management/Safety Priority #06 (FM# 4495591, ROYAL PALM BLVD FROM UNIVERSITY DRIVE TO RIVERSIDE DRIVE.) into Roadway Priority #25 (FM# 4495621, SR-817/UNIVERSITY DR @ ROYAL PALM BLVD.)</p> <p>2022 MPO ROADWAY PRIORITY# 25-CITY OF CORAL SPRINGS FEASIBILITY STUDY; ADD DUAL LEFT-TURN LANES ON UNIVERSITY DR SOUTHBOUND AT ROYAL PALM BLVD. ENVIRONMENTAL STUDY MAY BE NEEDED.</p>									
PDE	0	0	0	0	75,000	0	75,000	0	
PE	0	0	0	0	0	0	0	102,666	
ROW	0	0	0	0	0	0	0	466,662	
CST	0	0	0	0	0	0	0	466,662	
Total	0	0	0	0	75,000	0	75,000	1,035,990	
City: Coral Springs					Ownership: State		Total Project Cost Estimate: 1,110,990		

26 2023-26	Priority	A1A/SE 20 AVE @ SR 810/E HILLSBORO BLVD - FM# 4495641					Funding Source: State		
		Type of Work: INTERSECTION IMPROVEMENT					Proposed Study: PD&E		
<p>Program Direction:</p> <p>2022 MPO ROADWAY PRIORITY# 26-CITY OF DEERFIELD BEACH FEASIBILITY STUDY; RECONFIGURE INTERSECTION ADDITIONAL EB TO NB TURN LANE, ALLOW THROUGH MOVEMENT EB TO WB, AND EXTEND LEFT-TURN LANE NB TO WB</p>									
PDE	0	0	0	0	75,000	0	75,000	0	
PE	0	0	0	0	0	0	0	611,129	
ROW	0	0	0	0	0	0	0	3,073,311	
CST	0	0	0	0	0	0	0	3,073,311	
Total	0	0	0	0	75,000	0	75,000	6,757,751	
City: Deerfield Beach					Ownership: State		Total Project Cost Estimate: 6,832,751		

Phase	<2024	2024	2025	2026	2027	2028	Amount Funded	Funding Needed
-------	-------	------	------	------	------	------	---------------	----------------

27 2023-27	Priority	SR-858/HALLANDALE BEACH BLVD @ NE 14 AVE - FM# 4495651				Funding Source: State		
		Type of Work: ADD LEFT TURN LANE(S)		Proposed Study: PD&E		Yes Yes Yes Yes LAP: No Lead Agency: FDOT MTP Page # 5-15 MTP Timeframe: 2026-2030		
Program Direction:								
2022 MPO ROADWAY PRIORITY# 27- CITY OF HALLANDALE BEACH FEASIBILTY STUDY: IMPLEMENT DUAL LEFT TURN LANE EASTBOUND FROM EB HALLANDALE BEACH BLVD TO NB NE 14TH AVE. R/W NEEDED								
PDE	0	0	0	0	75,000	0	75,000	0
PE	0	0	0	0	0	0	0	293,131
ROW	0	0	0	0	0	0	0	1,673,325
CST	0	0	0	0	0	0	0	1,673,325
Total	0	0	0	0	75,000	0	75,000	3,639,781
City: Hallandale Beach					Ownership: State		Total Project Cost Estimate: 3,714,781	

28 2023-28	Priority	South Florida Rail Corridor @ Copans Rd - FM#				Funding Source: State		
		Type of Work: Grade separation		Proposed Study: PD&E		Yes Yes Yes Yes LAP: No Lead Agency: FDOT MTP Page # 5-15 MTP Timeframe: 2026-2030		
Program Direction: Move forward with programming to access grant funding.								
Construct grade separation at railroad crossing. Feasibility study is currently in Work Program. FDOT rail office is looking at grade separation in multiple locations. Project Sponsor: Broward MPO								
PE	0	0	0	0	0	0	0	5,198,600
ROW	0	0	0	0	0	0	0	23,630,000
CST	0	0	0	0	0	0	0	23,630,000
Total	0	0	0	0	0	0	0	52,458,600
City: Pompano Beach					Ownership: State		Total Project Cost Estimate: 52,458,600	

29 2023-29	Priority	Johnson St from US-1 to N 14th Ave - FM#				Funding Source: Federal		
		Type of Work: Resiliency Study		Proposed Study: Resiliency		No N/A Yes Yes LAP: No Lead Agency: TBD MTP Page # 5-15 MTP Timeframe: 2026-2030		
Program Direction:								
Conduct study to determine resiliency improvements. Project Sponsor: Broward MPO								
PE	0	0	0	0	0	0	0	750,000
Total	0	0	0	0	0	0	0	750,000
City: Hollywood					Ownership: Local		Total Project Cost Estimate: 750,000	

Phase	<2024	2024	2025	2026	2027	2028	Amount Funded	Funding Needed
-------	-------	------	------	------	------	------	---------------	----------------

30 2023-30	Priority	SE 2nd St/Hibiscus St/Church St Extension Project from US-1 to Church St - FM#				Funding Source: Federal		
		Type of Work: New Road Construction		Proposed Study: Feasibility		Yes Yes Yes Yes		
Program Direction:							LAP: No	Lead Agency: FDOT
Conduct multimodal feasibility study. This new facility would relieve traffic off of Hallandale Beach Blvd and accommodate new trips from future committed developments. New Road, for FDOT to construct, the segment would need to be assigned in the Federal Aid System. ROW is a challenge. Project Sponsor: City of Hallandale Beach							MTP Page # 5-15	MTP Timeframe: 2026-2030
PE	0	0	0	0	0	0	0	600,000
Total	0	0	0	0	0	0	0	600,000

City: Hallandale Beach Ownership: Local Total Project Cost Estimate: 600,000

31 2023-31	Priority	East Orange Dr from SW 67th Ave to SR-7 - FM#				Funding Source: Federal		
		Type of Work: Add center turn lane		Proposed Study: PD&E		Yes Yes Yes Yes		
Program Direction:							LAP: No	Lead Agency: FDOT
Add center turn lane and lighting improvements. Project may not need PD&E study. Depends on right of way. Project Sponsor: Town of Davie							MTP Page # 5-15	MTP Timeframe: 2026-2030
PE	0	0	0	0	0	0	0	1,245,435
ROW	0	0	0	0	0	0	0	5,661,069
CST	0	0	0	0	0	0	0	5,661,069
Total	0	0	0	0	0	0	0	12,567,573

City: Davie Ownership: Local Total Project Cost Estimate: 12,567,573

Phase	<2024	2024	2025	2026	2027	2028	Amount Funded	Funding Needed
-------	-------	------	------	------	------	------	---------------	----------------

32 2023-32	Priority Coral Hills Dr from Sample Rd to NW 31st Ct - FM#						Funding Source: Federal		
	Type of Work: Add Lanes & Reconstruct	Proposed Study: PD&E					Yes	Yes	Yes
Program Direction:							LAP: No	Lead Agency: FDOT	
Extend left-turn lane on Coral Hills Dr at Sample Rd, widen Coral Hills Dr between Sample Rd and NW 31st to 3-lane cross section including curb and gutter, bike lanes, and new sidewalk on east side. Congestion relief is needed at each of these intersections. Vehicle backup into through lanes and the LOS is failing. Project may not need PD&E study. "Add lanes" are only turn lanes and could go towards LAP. Project Sponsor: City of Coral Springs							MTP Page # 5-16	MTP Timeframe: 2026-2030	
PE	0	0	0	0	0	0	0	304,416	
ROW	0	0	0	0	0	0	0	1,383,708	
CST	0	0	0	0	0	0	0	1,383,708	
Total	0	0	0	0	0	0	0	3,071,832	
City: Coral Springs					Ownership: Local		Total Project Cost Estimate: 3,071,832		

33 2023-33	Priority SE 9th St FEC Rail Crossing Realignment from Dixie Hwy to US-1 - FM#						Funding Source: Federal		
	Type of Work: New FEC rail crossing	Proposed Study: PD&E					Yes	Yes	Yes
Program Direction:							LAP: No	Lead Agency: FDOT	
Construct grade separation over railroad crossing. Add EB to NB left-turn lane at US-1. Realigning the FEC rail crossing will help calm traffic in the surrounding single family neighborhoods while also creating a street hierarchy in the system. FEC collaboration has not taken place. Project Sponsor: City of Hallandale Beach							MTP Page # 5-16	MTP Timeframe: 2026-2030	
PE	0	0	0	0	0	0	0	188,133	
ROW	0	0	0	0	0	0	0	855,150	
CST	0	0	0	0	0	0	0	855,150	
Total	0	0	0	0	0	0	0	1,898,433	
City: Hallandale Beach					Ownership: Local		Total Project Cost Estimate: 1,898,433		

State Funds	Federal Funds	Local Funds	Federal, State, and Local Funds
State and Local Funds	State and Federal Funds	Federal and Local Funds	

Phase	<2024	2024	2025	2026	2027	2028	Amount Funded	Funding Needed
-------	-------	------	------	------	------	------	---------------	----------------

34 2023-34	Priority University Dr from Old Club Rd to Loxahatchee Rd - FM#	Type of Work: Widening					Proposed Study: PD&E			Funding Source: Federal		
	Program Direction:	Widen from 2 to 4 lanes with bike lanes and sidewalks. University Drive tapers from a 4-lane divided section to a 2-lane roadway south of Old Club Rd causing traffic congestion and back up delays at crossing intersections. Project Sponsor: City of Parkland					LAP: No MTP Page # 5-16			Lead Agency: FDOT MTP Timeframe: 2026-2030		
PE	0	0	0	0	0	0	0	2,073,974				
CST	0	0	0	0	0	0	0	9,427,156				
Total	0	0	0	0	0	0	0	11,501,130				
City: Parkland					Ownership: Local		Total Project Cost Estimate: 11,501,130					

35 2023-35	Priority SW 148TH AVE FROM BASS CREEK RD TO MIRAMAR PKWY - FM# 4496431	Type of Work: PD&E/EMO STUDY					Proposed Study: PD&E			Funding Source: Federal		
	Program Direction:	2022 MPO ROADWAY PRIORITY #36 WIDEN 2 TO 4 LANES WITH MEDIAN, BIKE LANES, SIDEWALKS, LANDSCAPE, HARDSCAPE, AND IRRIGATION.					LAP: No MTP Page # 5-18			Lead Agency: FDOT MTP Timeframe: 2026-2030		
PDE	0	0	0	0	500,000	1,500,000	2,000,000	0				
PE	0	0	0	0	0	0	0	1,108,153				
ROW	0	0	0	0	0	0	0	0				
CST	0	0	0	0	0	0	0	7,309,787				
Total	0	0	0	0	500,000	1,500,000	2,000,000	8,417,940				
City: Miramar					Ownership: Local		Total Project Cost Estimate: 10,417,940					

PROGRAM THRESHOLD

State Funds	Federal Funds	Local Funds	Federal, State, and Local Funds
State and Local Funds	State and Federal Funds	Federal and Local Funds	

Phase	<2024	2024	2025	2026	2027	2028	Amount Funded	Funding Needed
-------	-------	------	------	------	------	------	---------------	----------------

36 2023-36	Priority Miramar Blvd from Flamingo Rd to Hiatus Rd - FM# Type of Work: Widening	Proposed Study: PD&E					Funding Source: Federal		
							Yes	Yes	Yes

Program Direction:

Widen from 2 to 4 lanes with median, bicycle lanes, sidewalks, lighting, landscaping, hardscape, and irrigation. Connects to 4 lane segment east of Hiatus Road. Project Sponsor: City of Miramar

PE	0	0	0	0	0	0	0	3,559,348
ROW	0	0	0	0	0	0	0	0
CST	0	0	0	0	0	0	0	16,178,853
Total	0	0	0	0	0	0	0	19,738,201

City: Miramar Ownership: Local Total Project Cost Estimate: 19,738,201

37 2023-37	Priority Sheridan St from 196th Ave to US-27 - FM# Type of Work: Widening	Proposed Study: PD&E					Funding Source: Federal		
							Yes	Yes	Yes

Program Direction:

Widen from 2 to 4 lanes (includes sidewalk on one side). Project Sponsor: City of Pembroke Pines

PE	0	0	0	0	0	0	0	2,387,088
ROW	0	0	0	0	0	0	0	0
CST	0	0	0	0	0	0	0	10,850,401
Total	0	0	0	0	0	0	0	13,237,489

City: Pembroke Pines Ownership: County Total Project Cost Estimate: 13,237,489

Phase	<2024	2024	2025	2026	2027	2028	Amount Funded	Funding Needed
-------	-------	------	------	------	------	------	---------------	----------------

38 2023-38	Priority	Ravenswood Rd from SW 42nd St to Griffin Rd - FM#					Funding Source: Federal		
		Type of Work: Widening					Proposed Study: PD&E		
Program Direction:							LAP: No	Lead Agency: FDOT	
Widen from 2 to 4 lanes. Project Sponsor: Broward MPO							MTP Page # 5-18	MTP Timeframe: 2031-2035	
PE	0	0	0	0	0	0	0	814,000	
ROW	0	0	0	0	0	0	0	3,700,000	
CST	0	0	0	0	0	0	0	3,700,000	
Total	0	0	0	0	0	0	0	8,214,000	

City: Dania Beach Ownership: County Total Project Cost Estimate: 8,214,000

39 2023-39	Priority	Wiles Rd from Florida's Turnpike to Powerline Rd - FM#					Funding Source: Federal		
		Type of Work: Widening					Proposed Study: PD&E		
Program Direction:							LAP: No	Lead Agency: FDOT	
Widen from 4 to 6 lanes. Project Sponsor: Broward MPO							MTP Page # 5-18	MTP Timeframe: 2031-2035	
PE	0	0	0	0	0	0	0	1,474,000	
ROW	0	0	0	0	0	0	0	6,700,000	
CST	0	0	0	0	0	0	0	6,700,000	
Total	0	0	0	0	0	0	0	14,874,000	

City: Deerfield Beach Ownership: County Total Project Cost Estimate: 14,874,000

Phase	<2024	2024	2025	2026	2027	2028	Amount Funded	Funding Needed
-------	-------	------	------	------	------	------	---------------	----------------

40 2023-40	Priority	Rock Island Rd from McNab Rd to Commercial Blvd - FM#					Funding Source: Federal		
		Type of Work: Add Lanes & Reconstruct					Proposed Study: PD&E		
Program Direction:							LAP: No	Lead Agency: FDOT	
Widen from 4 to 6 lanes with buffered bike lanes. Project Sponsor: City of Tamarac							MTP Page # 5-18	MTP Timeframe: 2031-2035	
PE	0	0	0	0	0	0	0	676,059	
ROW	0	0	0	0	0	0	0	3,072,997	
CST	0	0	0	0	0	0	0	3,072,997	
Total	0	0	0	0	0	0	0	6,822,053	

City: Tamarac Ownership: Local Total Project Cost Estimate: 6,822,053

41 2023-41	Priority	South Florida Rail Corridor @ Sample Rd/SR-834 - FM#					Funding Source: State		
		Type of Work: Grade separation					Proposed Study: PD&E		
Program Direction: Move forward with programming to access grant funding.							LAP: No	Lead Agency: FDOT	
Construct grade separation at railroad crossing. Project Sponsor: Broward MPO							MTP Page # 5-19	MTP Timeframe: 2036-2045	
PE	0	0	0	0	0	0	0	5,198,600	
ROW	0	0	0	0	0	0	0	23,630,000	
CST	0	0	0	0	0	0	0	23,630,000	
Total	0	0	0	0	0	0	0	52,458,600	

City: Pompano Beach Ownership: State Total Project Cost Estimate: 52,458,600

Phase	<2024	2024	2025	2026	2027	2028	Amount Funded	Funding Needed
-------	-------	------	------	------	------	------	---------------	----------------

42 2023-42	Priority FEC Rail Corridor @ Sample Rd/SR-834 - FM# Type of Work: Grade separation						Proposed Study: PD&E	Funding Source: State Yes Yes Yes Yes	
		Program Direction: Move forward with programming to access grant funding.						LAP: No MTP Page # 5-19	Lead Agency: FDOT MTP Timeframe: 2036-2045
Construct grade separation at railroad crossing. Project Sponsor: Broward MPO									
PE	0	0	0	0	0	0	0	5,198,600	
ROW	0	0	0	0	0	0	0	23,630,000	
CST	0	0	0	0	0	0	0	23,630,000	
Total	0	0	0	0	0	0	0	52,458,600	

City: Pompano Beach Ownership: State Total Project Cost Estimate: 52,458,600

43 2023-43	Priority FEC Rail Corridor @ Commercial Blvd/SR-870 - FM# Type of Work: Grade separation						Proposed Study: PD&E	Funding Source: State Yes Yes Yes Yes	
		Program Direction: Move forward with programming to access grant funding.						LAP: No MTP Page # 5-19	Lead Agency: FDOT MTP Timeframe: 2036-2045
Construct grade separation at railroad crossing. Project Sponsor: Broward MPO									
PE	0	0	0	0	0	0	0	5,198,600	
ROW	0	0	0	0	0	0	0	23,630,000	
CST	0	0	0	0	0	0	0	23,630,000	
Total	0	0	0	0	0	0	0	52,458,600	

City: Oakland Park Ownership: State Total Project Cost Estimate: 52,458,600

Phase	<2024	2024	2025	2026	2027	2028	Amount Funded	Funding Needed
-------	-------	------	------	------	------	------	---------------	----------------

44 2023-44	Priority	Atlantic Blvd @ Powerline Rd - FM#					Funding Source: State				
		Type of Work: Intersection improvements					Yes Yes Yes Yes				
Proposed Study: PD&E						LAP: No			Lead Agency: FDOT		
Program Direction:						MTP Page # 5-19			MTP Timeframe: 2036-2045		
Construct center turn overpass. Relieve congestion from left turns. Project Sponsor: Broward MPO											
PE	0	0	0	0	0	0	0	9,900,000			
ROW	0	0	0	0	0	0	0	45,000,000			
CST	0	0	0	0	0	0	0	45,000,000			
Total	0	0	0	0	0	0	0	99,900,000			

City: Pompano Beach Ownership: State Total Project Cost Estimate: 99,900,000

45 2023-45	Priority	SR-820/PINES BLVD. @ SR-817/UNIVERSITY DR - FM# 4465871					Funding Source: STATE				
		Type of Work: PD&E/EMO STUDY					Yes Yes Yes No				
Proposed Study: PD&E						LAP: No			Lead Agency: FDOT		
Program Direction: Move funds from Roadway Priority 45 (Pines Blvd @ University Dr CTO, FM# 4465871) to Roadway Priority 23 (Oakland Park Blvd @ SR-7 CTO)						MTP Page # 5-19			MTP Timeframe: 2036-2045		
2021 MPO PRIORITY #48 IS R/W NEEDED 22-01: PDE PRE-WORK;22-02:FEASIBILITY STUDY;22-03:PDE. MPO requests to delay project to FY 2028.											
PDE	0	520,000	820,000	700,000	0	0	2,040,000	0			
PE	0	0	0	0	3,142,772	0	3,142,772	0			
ROW	0	0	0	0	0	0	0	45,000,000			
CST	0	0	0	0	0	0	0	45,000,000			
Total	0	520,000	820,000	700,000	3,142,772	0	5,182,772	90,000,000			

City: Pembroke Pines Ownership: State Total Project Cost Estimate: 95,182,772

Phase	<2024	2024	2025	2026	2027	2028	Amount Funded	Funding Needed
46 2023-46	Priority Hallandale Beach Blvd Bypass from Dixie Highway to US-1 - FM# Type of Work: Add Lanes & Reconstruct						Funding Source: State Yes Yes Yes Yes	
	Proposed Study: PD&E						LAP: No Lead Agency: FDOT MTP Page # 5-19 MTP Timeframe: 2036-2045	
Program Direction: Add EB to NB left-turn lane at US-1. Project Sponsor: City of Hallandale Beach								
PE	0	0	0	0	0	0	0	12,893,760
ROW	0	0	0	0	0	0	0	0
CST	0	0	0	0	0	0	0	58,608,000
Total	0	0	0	0	0	0	0	71,501,760
City: Hallandale Beach						Ownership: State Total Project Cost Estimate: 71,501,760		
47 2023-47	Priority South Florida Rail Corridor @ Atlantic Blvd/SR-814 - FM# Type of Work: Grade Separation						Funding Source: State Yes Yes Yes Yes	
	Proposed Study: PD&E						LAP: No Lead Agency: FDOT MTP Page # 5-19 MTP Timeframe: 2036-2045	
Program Direction: Move forward with programming to access grant funding.								
Construct grade separation at railroad crossing. Project Sponsor: Broward MPO								
PE	0	0	0	0	0	0	0	5,198,600
ROW	0	0	0	0	0	0	0	23,630,000
CST	0	0	0	0	0	0	0	23,630,000
Total	0	0	0	0	0	0	0	52,458,600
City: Pompano Beach						Ownership: State Total Project Cost Estimate: 52,458,600		

Phase	<2024	2024	2025	2026	2027	2028	Amount Funded	Funding Needed
-------	-------	------	------	------	------	------	---------------	----------------

48 2023-48	Priority	South Florida Rail Corridor @ NW 62nd/Cypress Creek - FM#					Funding Source: Federal		
		Type of Work: Grade Separation					Proposed Study: PD&E		
Program Direction: Move forward with programming to access grant funding.							LAP: No	Lead Agency: FDOT	
Construct grade separation at railroad crossing. Project Sponsor: Broward MPO							MTP Page # 5-19	MTP Timeframe: 2036-2045	
PE	0	0	0	0	0	0	0	5,198,600	
ROW	0	0	0	0	0	0	0	23,630,000	
CST	0	0	0	0	0	0	0	23,630,000	
Total	0	0	0	0	0	0	0	52,458,600	

City: Fort Lauderdale Ownership: County Total Project Cost Estimate: 52,458,600

49 2023-49	Priority	SW 196th Ave from Pines Blvd to Miramar Pkwy - FM#					Funding Source: Federal		
		Type of Work: Widening					Proposed Study: PD&E		
Program Direction:							LAP: No	Lead Agency: FDOT	
Widen from 2 to 4 lanes. Project Sponsor: Broward MPO							MTP Page # 5-20	MTP Timeframe: 2036-2045	
PE	0	0	0	0	0	0	0	4,201,855	
ROW	0	0	0	0	0	0	0	19,099,340	
CST	0	0	0	0	0	0	0	19,099,340	
Total	0	0	0	0	0	0	0	42,400,535	

City: Miramar Ownership: Local Total Project Cost Estimate: 42,400,535

Phase	<2024	2024	2025	2026	2027	2028	Amount Funded	Funding Needed	
50	Griffin Rd from Bonaventure Blvd to US-27 - FM#						Funding Source: Federal		
2023-50	Type of Work: Add Lanes & Reconstruct			Proposed Study: PD&E			Yes Yes Yes Yes		
Program Direction:							LAP: No	Lead Agency: FDOT	
Widen Griffin Rd from 2 to 4 lanes (include new bike lanes, install solar lighting from I-75 to US-27). Project Sponsor: Town of Southwest Ranches							MTP Page # 5-20	MTP Timeframe: 2036-2045	
PE	0	0	0	0	0	0	0	3,938,963	
ROW	0	0	0	0	0	0	0	0	
CST	0	0	0	0	0	0	0	17,904,375	
Total	0	0	0	0	0	0	0	21,843,338	
City: Southwest Ranches					Ownership: County		Total Project Cost Estimate: 21,843,338		

DRAFT

SYSTEMS MANAGEMENT

/SAFETY

PROGRAM



LEGEND:

— PRIORITIZED
SYSTEMS
MANAGEMENT/
SAFETY PROJECTS



Phase	<2024	2024	2025	2026	2027	2028	Amount Funded	Funding Needed
-------	-------	------	------	------	------	------	---------------	----------------

01 2023 -New Priority LLOYD ESTATES ELEMENTARY SCHOOL - SRTS - VARIOUS LOCATIONS - FM# 4442401 Type of Work: SIDEWALK Proposed Study: N/A	Funding Source: Federal Yes Yes Yes Yes LAP: Yes Lead Agency: CITY OF OAKLAND PARK MTP Page #: 5-3 MTP Timeframe: N/A							
	Program Direction: Allocate \$790,513 of TA funds to FY 2024 to support construction phase.							
SRTS LAP PROJECT WITH CITY OF OAKLAND PARK; FILL SIDEWALK GAPS; INCLUDES MISCELLANEOUS INTERSECTION UPGRADES (CROSSING AND ADA RAMPS) AS WELL AS SHARED LANE MARKINGS (SHARROWS). AREA BOUNDED BY SR-9/I-95;SR-845/POWERLINE RD. TO ANDREWS AVE. AND NW 38TH STREET TO PROSPECT RD.								
PE	5,000	0	0	0	0	0	5,000	0
CST	917,749	0	0	0	0	0	917,749	790,513
Total	922,749	0	0	0	0	0	922,749	790,513
City: Oakland Park					Ownership: Local		Total Project Cost Estimate: 1,696,677	

02 2023-01 Priority BROWARD COUNTY- SAFETY REVIEW AND FEASIBILITY ASSESSMENT - On System - FM# Type of Work: Feasibility Study Proposed Study: N/A	Funding Source: State N/A N/A N/A N/A LAP: No Lead Agency: FDOT MTP Page # 5-30 MTP Timeframe: N/A							
	Program Direction: On System Priority Projects (2 Projects Annually)							
On System Priority Projects (2 Projects Annually)								
PDE	0	0	0	0	0	0	0	500,000
PE	0	0	0	0	0	0	0	1,000,000
CST	0	0	0	0	0	0	0	8,000,000
Total	0	0	0	0	0	0	0	9,500,000
City: Various					Ownership: State		Total Project Cost Estimate: 9,500,000	

Phase	<2024	2024	2025	2026	2027	2028	Amount Funded	Funding Needed	
03 Priority	BROWARD COUNTY- SAFETY REVIEW AND FEASIBILITY ASSESSMENT - Off System - FM#						Funding Source: Federal		
2023-02	Type of Work: Feasibility Study			Proposed Study: N/A			N/A N/A N/A N/A		
Program Direction: Off System Priority Projects (2 Projects Annually). Coordinate with SS4A Grant.							LAP: Yes	Lead Agency: TBD	
Off System Priority Projects (2 Projects Annually)							MTP Page # 5-30	MTP Timeframe: N/A	
PDE	0	0	0	0	0	0	0	400,000	
PE	0	0	0	0	0	0	0	800,000	
CST	0	0	0	0	0	0	0	2,600,000	
Total	0	0	0	0	0	0	0	3,800,000	
City: Various					Ownership: Local/County		Total Project Cost Estimate: 3,800,000		
04 Priority	On-System Planning Project #1 - FM#						Funding Source: State		
2023-03	Type of Work: Planning Study			Proposed Study: N/A			N/A N/A N/A N/A		
Program Direction:							LAP: No	Lead Agency: FDOT	
							MTP Page # 5-30	MTP Timeframe: N/A	
PLN	0	0	0	0	0	0	0	80,000	
Total	0	0	0	0	0	0	0	80,000	
City: TBD					Ownership: Local/County		Total Project Cost Estimate: 80,000		
05 Priority	On-System Planning Project #2 - FM#						Funding Source: State		
2023-04	Type of Work: Planning Study			Proposed Study: N/A			N/A N/A N/A N/A		
Program Direction:							LAP: No	Lead Agency: FDOT	
							MTP Page # 5-30	MTP Timeframe: N/A	
PLN	0	0	0	0	0	0	0	80,000	
Total	0	0	0	0	0	0	0	80,000	
City: TBD					Ownership: State		Total Project Cost Estimate: 80,000		

Phase	<2024	2024	2025	2026	2027	2028	Amount Funded	Funding Needed
-------	-------	------	------	------	------	------	---------------	----------------

06 2023-06	Priority	FDOT Signal System - FM#					Funding Source: State		
		Type of Work: Signal System Improvements					Yes Yes Yes Yes		
Program Direction:					Proposed Study: N/A		LAP: No		
\$169,227,273 is set aside for on-system traffic signal improvements during the 2045 MTP planning horizon. FDOT carries over project to support TSM&O projects.							Lead Agency: FDOT		
							MTP Page # 5-30		
							MTP Timeframe: N/A		
ENV,PE,CST	0	0	0	0	0	0	0	100,000,000	
Total	0	0	0	0	0	0	0	100,000,000	
City: Various					Ownership: State		Total Project Cost Estimate: 100,000,000		

07 2023-07	Priority	ROYAL PALM BLVD FROM UNIVERSITY DRIVE TO RIVERSIDE DRIVE - FM# 4495591					Funding Source: Federal		
		Type of Work: PEDESTRIAN SAFETY IMPROVEMENT					Yes N/A Yes N/A		
Program Direction: Systems Management/Safety Priority #06 (FM# 4495591, ROYAL PALM BLVD FROM UNIVERSITY DRIVE TO RIVERSIDE DRIVE.) into Roadway Priority #25 (FM# 4495621, SR-817/UNIVERSITY DR @ ROYAL PALM BLVD.)					Proposed Study: Safety		LAP: Yes		
SAFETY IMPROVEMENTS VARIOUS LOCATIONS LAP W/ CORAL SPRINGS NO R/W NEEDED. Potential merge to FM# 4495621 SR-817/University Dr. @ ROYAL PALM BLVD.							Lead Agency: Coral Springs		
							MTP Page # 5-30		
							MTP Timeframe: N/A		
PE	400,000	0	0	0	0	0	400,000	0	
CST	0	0	0	905,000	1,000,000	0	1,905,000	0	
Total	400,000	0	0	905,000	1,000,000	0	2,305,000	0	
City: Coral Springs					Ownership: Local		Total Project Cost Estimate: 2,305,000		

08 2021-01	Priority	SR-736/DAVIE BLVD FROM SR-9/I-95 TO SR-5/US-1 - FM# 4441181					Funding Source: State		
		Type of Work: ATMS - ARTERIAL TRAFFIC MGMT					Yes Yes Yes Yes		
Program Direction: Remove CARU funds, apply \$1,848,761 Earmark Funds					Proposed Study: N/A		LAP: N/A		
2022 MPO TSM&O/SAFETY PRIORITY# 1 G/W 444119-1							Lead Agency: MANAGED BY FDOT		
							MTP Page # 5-3		
							MTP Timeframe: N/A		
PE	415,287	18,632	0	0	0	0	433,919	0	
CST	0	0	0	1,912,519	0	0	1,912,519	0	
Total	415,287	18,632	0	1,912,519	0	0	2,346,438	0	
City: FORT LAUDERDALE					Ownership: State		Total Project Cost Estimate: 2,346,438		

Phase	<2024	2024	2025	2026	2027	2028	Amount Funded	Funding Needed
-------	-------	------	------	------	------	------	------------------	-------------------

01 2023-01	Priority	Andrews & 3rd Avenues Mobility Improvements SE 17th Street to Sunrise Blvd - FM#				Funding Source: Federal and Local			
		Type of Work: Feasibility Study		Proposed Study: Feasibility		<input checked="" type="checkbox"/> Yes <input type="checkbox"/> No	<input type="checkbox"/> Yes <input checked="" type="checkbox"/> No	<input checked="" type="checkbox"/> Yes <input type="checkbox"/> No	

Program Direction: LAP: No Lead Agency: FDOT
MTP Page # 5-29 MTP Timeframe: 2026-2030

Reconfigure streets to be oneway oriented, with shared use path, transit-only lane, lighting, stormwater, transit, crosswalks. Potential Surtax project. Project remains on MMPL to supplement funds. Coordination is still under way. Project Sponsor: City of Fort Lauderdale

PE	0	0	0	0	0	0	0	10,000,000
Total	0	0	0	0	0	0	0	10,000,000

City: Fort Lauderdale Ownership: County Total Project Cost Estimate: 10,000,000

02 2023-02	Priority	Hollywood/Pines Blvd. Rapid Bus from Flamingo Rd. (Pembroke Pines) to Hollywood (Young Circle) - FM#				Funding Source: State and Local			
		Type of Work: Transit Improvement		Proposed Study: N/A		<input checked="" type="checkbox"/> Yes <input type="checkbox"/> No	<input checked="" type="checkbox"/> Yes <input type="checkbox"/> No	<input checked="" type="checkbox"/> Yes <input type="checkbox"/> No	

Program Direction: LAP: No Lead Agency: FDOT
MTP Page # 5-29 MTP Timeframe: 2026-2030

Implement 10-15 min limited stop bus service, mixed traffic or semiexclusive Business Access and Transit (BAT) lanes, level boarding stations, use of Transit Signal Priority (TSP)/Queue Jump technologies, mobile ticketing. County is seeking federal funds and need to finalize components and coordination. Project Sponsor: Broward County

PE	0	0	0	0	0	0	0	3,074,180
CST	0	0	0	0	0	0	0	61,483,599
Total	0	0	0	0	0	0	0	64,557,779

City: Hollywood/Pembroke Pines Ownership: State Total Project Cost Estimate: 64,557,779

Phase	<2024	2024	2025	2026	2027	2028	Amount Funded	Funding Needed
03 Priority 2023-03	University Dr Rapid Bus from Coconut Creek (Sample Rd) to MiamiDade Co (Golden Glades) - FM#					Funding Source: State and Local		
	Type of Work: Transit Improvement					Proposed Study: N/A		
Program Direction:							LAP: No Lead Agency: FDOT MTP Page # 5-29 MTP Timeframe: 2031-2035	
Implement 10-15 min limited stop bus service, mixed traffic or semiexclusive Business Access and Transit (BAT) lanes, level boarding stations, use of Transit Signal Priority (TSP)/Queue Jump technologies, mobile ticketing. County is seeking federal funds and need to finalize components and coordination. Project Sponsor: Broward County								
PE	0	0	0	0	0	0	0	5,509,339
CST	0	0	0	0	0	0	0	110,186,775
Total	0	0	0	0	0	0	0	115,696,114
City: Coral Springs/Cooper City/Davie/Lauderhill/Miramar/Plantation/Pembroke Pines/Tamarac/Sunrise					Ownership: State		Total Project Cost Estimate: 115,696,114	
04 Priority 2023-04	SFRTA ROLLING STOCK SEFTC TRIP - FM# 4481021					Funding Source: FEDERAL		
	Type of Work: PURCHASE VEHICLES/EQUIPMENT					Proposed Study: N/A		
Program Direction: Allocate \$7,500,000 of SU funds, \$2,390,654 of TRIP funds, and \$4,309,346 of TRWR funds to FY 2025; Allocate \$5,000,000 of SU funds to FY 2025 – FY 2027; Allocate \$3,500,000 of TRIP funds and \$2,300,000 of TRWR funds to FY 2027. Flex to FTA for SFRTA.							LAP: No Lead Agency: MANAGED BY SOUTH FL REG TRANSPORT AUTH MTP Page # 5-29 MTP Timeframe: 2036-2045	
2022 TRIP SEFTC #26; 2022 MPO TRANSIT PRIORITY # 4 FLEX TO SFRTA; JPA WITH SFRTA NON-BUDGET REVENUE.								
CAP	0	0	0	0	0	0	0	25,000,000
Total	0	0	0	0	0	0	0	25,000,000
City: SFRTA					Ownership: SFRTA		Total Project Cost Estimate: 25,000,000	

4

FLORIDA'S TURNPIKE

LIST OF PRIORITIES



Florida's Turnpike Enterprise Planned and Unfunded Needs List

10-Year Finance Plan Projects

System / Facility	Category	County	FPN	Limits (From / To)		Project Description	Existing Deficiency / Year Needed	PH 22 Year	PH 32 Year	PH 43 Year	PH 52 Year	PH 22 Funding (\$K)	PH 32 Funding (\$K)	PH 43 Funding (\$K)	PH 52 Funding (\$K)	Source (FP, TT, Other)
Sawgrass Expressway / SR 869	Widening	Broward	437155-5	MP 0 - South of I-75 / I-595 / NW 8th St (Future)	MP 0.5 - South of Sunrise Blvd / SR 838	Widen from 6 to 10 Lanes Includes New Interchange: ◆ MP 0 - NW 8th St	2025	Complete	2023-2025	2024-2025	2026	-	\$550	\$5,620	\$92,402	10-yr FP
Sawgrass Expressway / SR 869	Widening	Broward	437155-1	MP 0.5 - South of Sunrise Blvd / SR 838	MP 4.1 - North of Oakland Park Blvd / SR 816	Widen from 6 to 10 Lanes Includes Interchange Improvements: ◆ MP 1 - Sunrise Blvd / SR 838 ◆ MP 1B - Pat Salerno Dr ◆ MP 3 - Oakland Park Blvd / SR 816	Existing Deficiency	Complete	2023-2024	2023-2025	2025	-	\$5,500	\$30,811	\$235,227	10-yr FP
Sawgrass Expressway / SR 869	Widening	Broward	437155-6	MP 4.1 - North of Oakland Park Blvd / SR 816	MP 7.5 - South of Atlantic Blvd / SR 814	Widen from 6 to 10 Lanes Includes Interchange Improvement: ◆ MP 5 - Commercial Blvd / SR 870	Existing Deficiency	Complete	2025-2026	2024-2025	2026	-	\$649	\$1,838	\$112,949	10-yr FP
Sawgrass Expressway / SR 869	Widening	Broward	435461-1	MP 9 - North of Atlantic Blvd / SR 814	MP 12 - North of Sample Rd / SR 834	Widen from 6 to 10 Lanes Includes Interchange Improvement: ◆ MP 11 - Sample Rd / SR 834	2030	Complete	2024	-	2024	-	\$330	-	\$75,204	10-yr FP
Sawgrass Expressway / SR 869	Widening	Broward	435461-4	MP 12 - North of Sample Rd / SR 834	MP 14.8 - South of University Dr / SR 817	Widen from 6 to 10 Lanes Includes Interchange Improvement: ◆ MP 14 - Coral Ridge Dr	2035	Complete	2024	-	2026	-	\$520	-	\$84,006	10-yr FP
Sawgrass Expressway / SR 869	Widening	Broward	435461-5	MP 14.8 - South of University Dr / SR 817	MP 18.4 - North of US 441	Widen from 6 to 10 Lanes Includes Interchange Improvement: ◆ MP 15 - University Dr / SR 817	2025	Complete	2024	-	2026	-	\$300	-	\$82,800	10-yr FP
Sawgrass Expressway / SR 869	Widening	Broward	437224-1	MP 18.4 - North of US 441	MP 22 - Powerline Rd	Widen from 6 to 10 Lanes w/CD Includes Interchange Improvements: ◆ MP 18 - US 441 ◆ MP 19 - Lyons Rd ◆ MP 21 - Turnpike Mainline / SR 91 / SW 10th St	2030	Complete	2024-2025	-	2031	-	\$15,900	-	\$431,304	10-yr FP
Turnpike Mainline / SR 91	Widening	Broward	423373-6	MP 3.3 X- Miami-Dade / Broward CL	MP 47 - Turnpike Mainline / SR 821	Widen from 6 to 8 Lanes Includes Interchange Improvement: ◆ MP 47 - Turnpike Mainline / SR 821	2025	Complete	Complete	-	2031	-	-	-	\$3,933	10-yr FP
Turnpike Mainline / SR 91	TSM&O	Broward	446223-1	MP 47 - Turnpike Mainline / SR 821	MP 51 - Johnson St	Corridor TSM&O Improvement Includes Interchange Improvement: ◆ MP 49 - Hollywood Blvd / Pines Blvd / SR 820	Existing Deficiency	Complete	Underway-2023	-	2024	-	-	-	\$92,777	10-yr FP
Turnpike Mainline / SR 91	TSM&O	Broward	446224-1	MP 51 - Johnson St	MP 53 - Griffin Rd / SR 818	Corridor TSM&O Improvement	Existing Deficiency	Complete	Underway-2023	-	2024	-	-	-	\$65,482	10-yr FP
Turnpike Mainline / SR 91	TSM&O	Broward	415927-4	MP 71 - Sawgrass Expwy / SR 869	MP 73 - Broward / Palm Beach CL	Corridor TSM&O Improvement	2025	Complete	Underway-2023	-	2025	-	-	-	\$40,430	10-yr FP
Turnpike Mainline / SR 91	TSM&O	Broward	446224-2	-	-	TSM&O Interchange Improvement: ◆ MP 54 - Griffin Rd / SR 818	2030	-	2024	2025	2026	-	\$1,018	\$1,000	\$8,485	10-yr FP

Florida's Turnpike Enterprise Planned and Unfunded Needs List

Unfunded Projects

System / Facility	Category	County	FPN	Limits (From / To)		Project Description	Existing Deficiency / Year Needed	PH 22 Year	PH 32 Year	PH 43 Year	PH 52 Year	PH 22 Funding (\$K)	PH 32 Funding (\$K)	PH 43 Funding (\$K)	PH 52 Funding (\$K)	Source (FP, TT, Other)
Turnpike Mainline / SR 91	Widening	Broward	449709-1	MP 47 - Turnpike Mainline / SR 821	MP 54 - I-595	Widen from 8 to 10 Lanes w/ML Includes Interchange Improvement: ◆ MP 49 - Hollywood Blvd / Pines Blvd / SR 820 ◆ MP 53 - Griffin Rd	2030	2028	-	-	-	\$4,500	-	-	-	10-yr FP
Turnpike Mainline / SR 91	Widening	Broward	452078-1, 452075-1, 452077-2, 452077-1, 452076-1, 452073-1, 452076-2	MP 54 - I-595 / SR 84 / US 441	MP 70 - Wiles Rd	Widen from 6/8 to 10/12 Lanes w/ML Includes Interchange Improvements: ◆ MP 62 - Commercial Blvd / SR 870 ◆ MP 67 - Coconut Creek Pkwy / ML King Blvd ◆ MP 69 - Sample Rd / SR 834 Includes New Interchanges: ◆ MP 61 - Oakland Park Blvd ◆ MP 63 - Cypress Creek Rd	2025	Underway-2023	2023, 2025-2027, 2029	2028-2029	-	-	\$73,147	\$26,400	-	10-yr FP
Turnpike Mainline / SR 91	Widening	Broward	447716-2	MP 71 - Sawgrass Expwy / SR 869	MP 75 - Glades Rd / SR 808	Widen from 8 to 10 Lanes w/ML	2035	2028	-	-	-	\$5,000	-	-	-	10-yr FP
Turnpike Mainline / SR 91	TSM&O	Broward	-	MP 47 - Turnpike Mainline / SR 821	MP 71 - Sawgrass Expwy / SR 869	Corridor TSM&O Improvement	2050	-	-	-	-	-	-	-	-	Traffic Trends
Turnpike Mainline / SR 91	Interchange	Broward	446019-1	-	-	Interchange Improvement: ◆ MP 75 - Glades Rd / SR 808	2025	Underway-2023	-	-	-	-	-	-	-	10-yr FP

Partnership Projects

System / Facility	Category	County	FPN	Limits (From / To)		Project Description	Existing Deficiency / Year Needed	PH 22 Year	PH 32 Year	PH 43 Year	PH 52 Year	PH 22 Funding (\$K)	PH 32 Funding (\$K)	PH 43 Funding (\$K)	PH 52 Funding (\$K)	Source (FP, TT, Other)
SW 10th Street Connector	New Construction	Broward	439891-1	Turnpike Mainline / SR 91	I-95	New Road Construction	-	Complete	-	-	2025	-	-	-	\$90,090	10-yr FP