



I-95 Broward County Overview

Strategic Intermodal System (SIS), Express Lane & Interchange Project Status & I-95 from Miami-Dade / Broward County Line to North of Griffin Road



August / September 2023

Agenda

- **Strategic Intermodal System (SIS) Program**
- **Project Development Process**
- **Project Status**
 - I-95 Express Projects
 - I-95 Interchanges
- **I-95 from Miami-Dade / Broward County Line to North of Griffin Road**
 - PD&E Study Project Kick-off

Strategic Intermodal System (SIS)

Purpose

- Established in 2003 by the Governor and Legislature
 - [FL Statute 339.61](#). “There is hereby created the Florida Strategic Intermodal System. For purposes of funding projects under the system, the department shall allocate from the State Transportation Trust Fund in its program and resource plan...”
 - [FL Statute 339.64 Strategic Intermodal System Plan](#). “The department shall develop, in cooperation with metropolitan planning organizations, regional planning councils, local governments, and other transportation providers, a Strategic Intermodal System Plan.”
 - [FL Statute 339.135 Work program](#). “...the department shall allocate at least 50 percent of any new discretionary highway capacity funds to the Florida Strategic Intermodal System created pursuant to s. 339.61.”
- A high priority network of transportation facilities important to the state's economy and mobility.
- Focuses resources on transportation facilities and services that support critical interregional, interstate, and international trips.



SIS Objectives

- Economic Development
 - Support Florida as a global hub for trade, tourism, innovation, business, and investment.
- Interregional Connectivity
 - Ensure the efficiency and reliability of multimodal transportation connectivity between Florida’s economic regions and other states and countries.
- Intermodal Connectivity
 - Expand transportation choices and integrate all modes for interregional trips.



SIS - I-95 in Southern Broward County

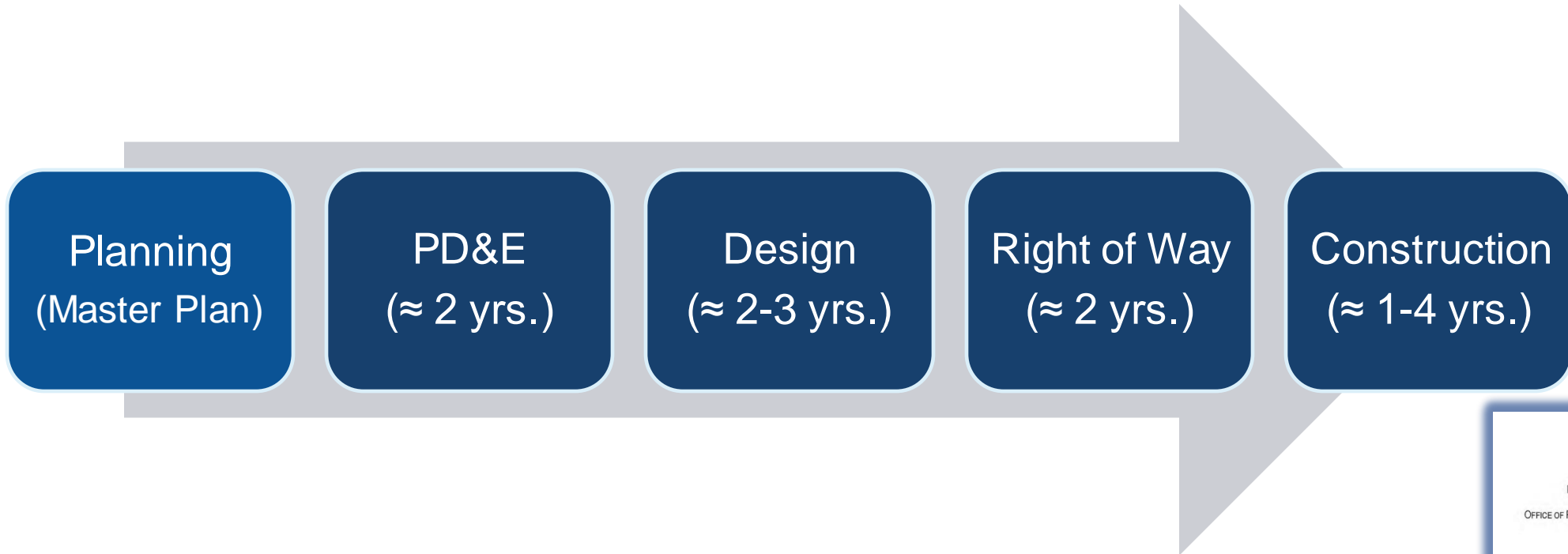
■ Traffic

- 8 of the top 10 interstate segments in Florida are from Oakland Park Boulevard to Pembroke Road
 - Highest volume segment in Florida is Davie Boulevard to Sunrise Boulevard with 314,000 vpd
 - 2nd highest volume segment is Hollywood Boulevard to Sheridan Street with 277,000 vpd
- Daily truck % is +/- 10% of the total daily volume
 - 64M tons of freight in 2018 (Broward County Freight and Logistics Overview 2021, FDOT)
- Continues to grow with:
 - Mainline daily volumes increasing 0.5% annually for a total of 16% average growth by 2050
 - Interchange daily volumes increasing 0.9% annually for a total of 14-33% average growth by 2050

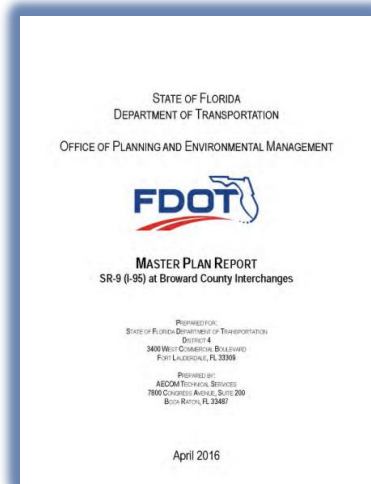
■ 2018-2022 Historical Crashes

- Approximately 1,660 crashes per year along I-95 between Miami-Dade / Broward County Line to North of Griffin Road with multiple High Crash Locations
- Significant concentration of crashes along ramp merge/diverge areas and arterial ramp terminals

Project Development Process



- I-95 Express Lane Project Development & Environment (PD&E) Studies Completed in 2013
- I-95 Interchange Master Plan Completed in 2016
 - Identified short term and long term needs for a 20-year horizon
 - Identified course of action and project programming

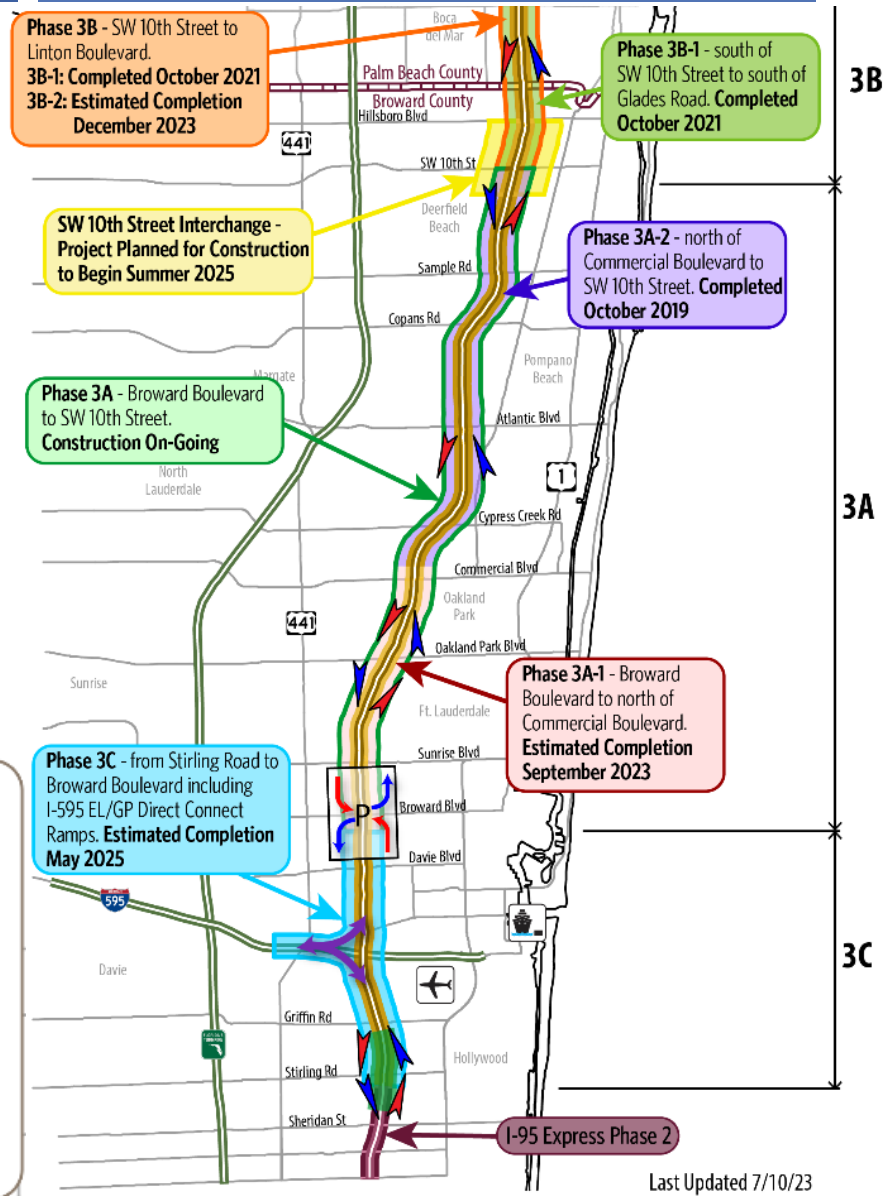


I-95 Express Status

- Phase 2 – In Operation Since 2016
- Phase 3C – Estimated Completion May 2025
- Phase 3A-1 – Estimated Completion September 2023
- Phase 3A-2 – Completed 2019
- Phase 3B-1 – Completed 2021
- Phase 3B-2 – Estimated Completion December 2023
- SW 10th Interchange – Construction Begins Summer 2025
 - 2nd express lane to be constructed

LEGEND

- I-95 Express Lanes (EL)
- Phase 2 Project Limits
- Phase 3A Project Limits
- Phase 3B Project Limits
- Phase 3C Project Limits
- Exit Point from ELs
- Entry Point to ELs
- Direct Connect Access to I-595
- I-95 Express Direct Connect at the Broward Park n Ride Lot
- Weave Zone - Entry/Exit Combined Lane



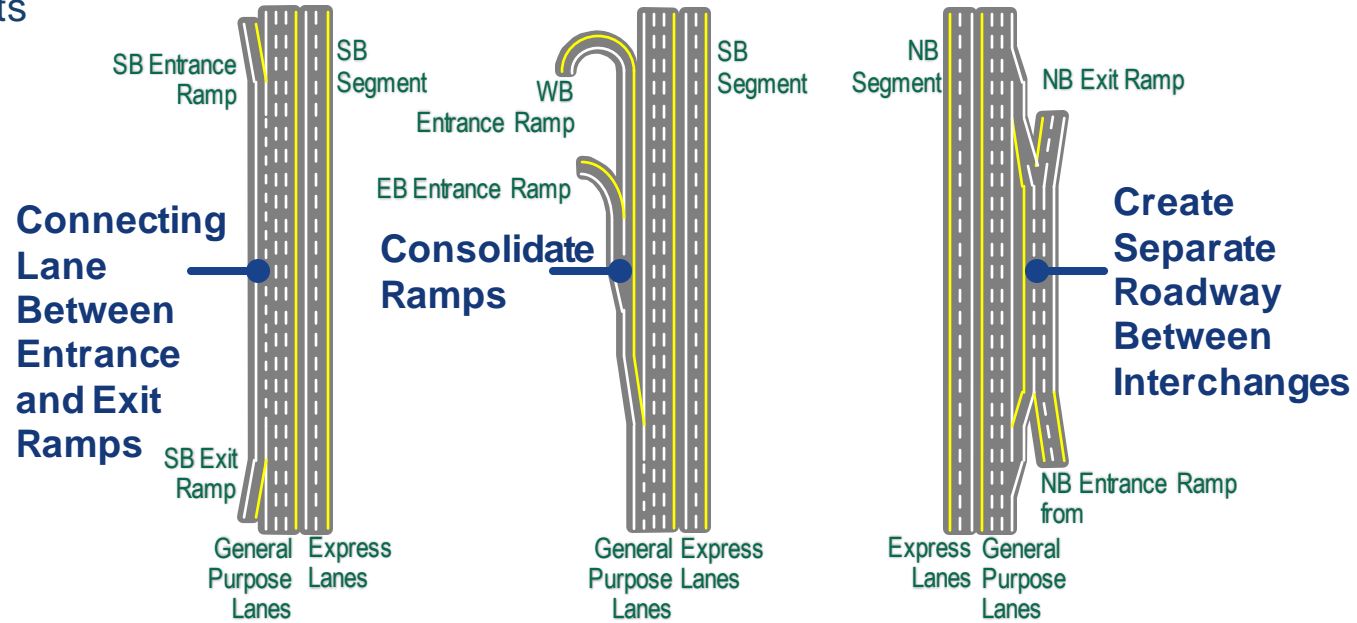
2016 I-95 Interchange Master Plan

Deficiencies Found

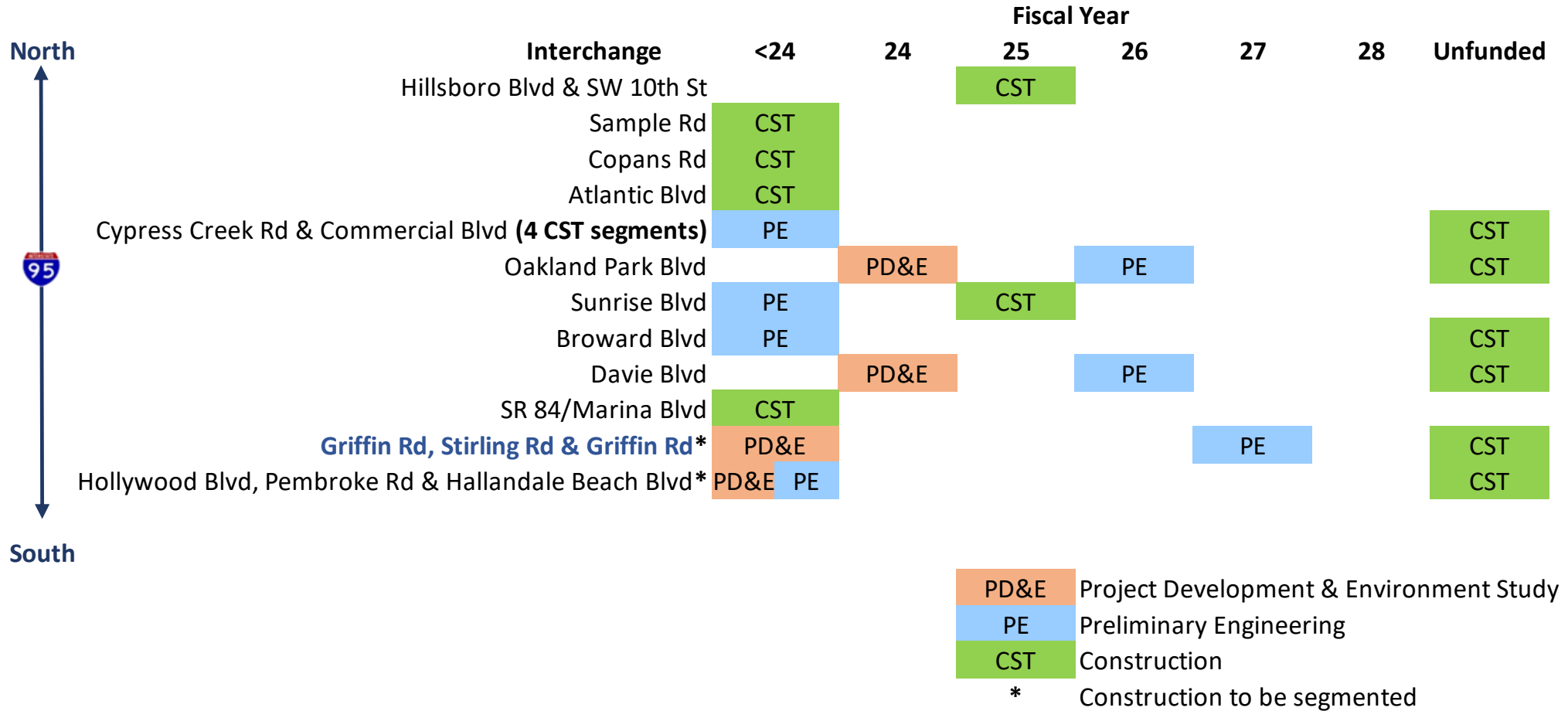
- I-95 ramps / ramp terminals
 - Operational / safety issues at ramp entrances and exits
 - Congestion at cross street ramp terminals
 - Traffic spillback onto I-95 mainline
- Arterials
 - Cross streets operations that affect I-95 ramps
 - Missing sidewalks and bike lanes



Typical Improvements



Interchange Project Progress



SR-9 / I-95 PD&E STUDY

from Miami-Dade / Broward County Line to North of Griffin Rd.

FPID No. 439170-1-22-02 / ETDM No. 14500

Broward MPO



What is a PD&E Study?



- ✓ Required to satisfy the National Environmental Policy Act and associated federal and state laws and regulations
- ✓ Formal FDOT process to ensure that consideration is given to environmental impacts, social impacts, public input, engineering design and project costs
- ✓ Involves engineering analysis and environmental evaluation, all accomplished within the context of a public participation plan
- ✓ Includes data collection, traffic forecasts, alternatives development, engineering analyses, environmental analyses and documentation
- ✓ Involves the preparation of preliminary engineering and environmental documentation
- ✓ Continuous public engagement and coordination with Federal, State, and Local Agencies

Project Limits and Study Area



■ Municipalities

- ✓ Dania Beach
- ✓ Hollywood
- ✓ Pembroke Park
- ✓ Hallandale Beach

■ I-95: 65 mph

- ✓ 8 general use lanes (four in each direction)
- ✓ Between two to four Managed lanes

■ 6.6 Miles

■ 6 existing interchanges

- ✓ Only the 3 interchanges in the northern part of the study area (Sheridan Street, Stirling Road, and Griffin Road at I-95) are proposed for improvements in this study.



The purpose of the study is to:

- ✓ Improve mainline operations and improve traffic operations at the existing interchanges, cross streets, and managed lanes now and in the future
- ✓ Enhance safety along SR 9/I-95 from Miami-Dade/Broward County Line to north of Griffin Road in Broward County, Florida
- ✓ Address social demands, economic development, and other modes of travel (all roadway users)
- ✓ Address local concerns and area needs on adjacent major arterials (roadways) including Old Griffin Road
- ✓ Implement short-term and long-term solutions to enhance multimodal connectivity to major employment centers and residential areas
- ✓ Provide opportunities to program and fund smaller projects within overall study limits through “Project Segmentation”



- **Social Demands and Economic Development**

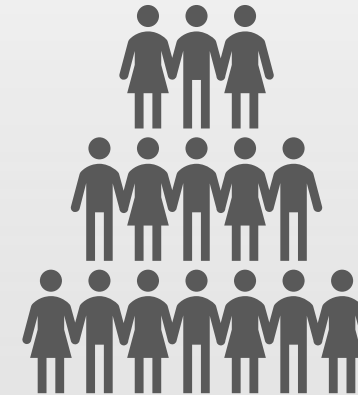
- ✓ Connects major employment and population centers
- ✓ Supports freight and goods movement
 - ✓ Ports, airports, seaports
 - ✓ Supply chain and logistics

- **Growth**

- ✓ According to the Broward MPO LRTP, Broward County's population is expected to grow 27% between 2015 and 2045
- ✓ Employment is expected to increase 25% in that same time frame

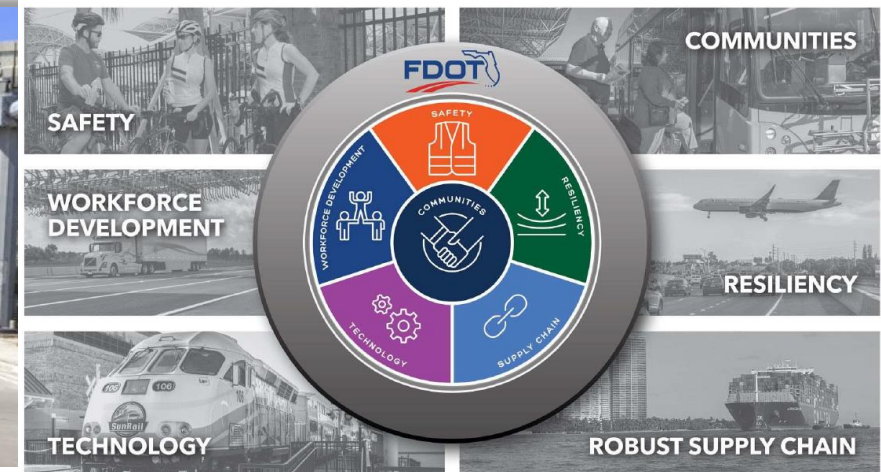
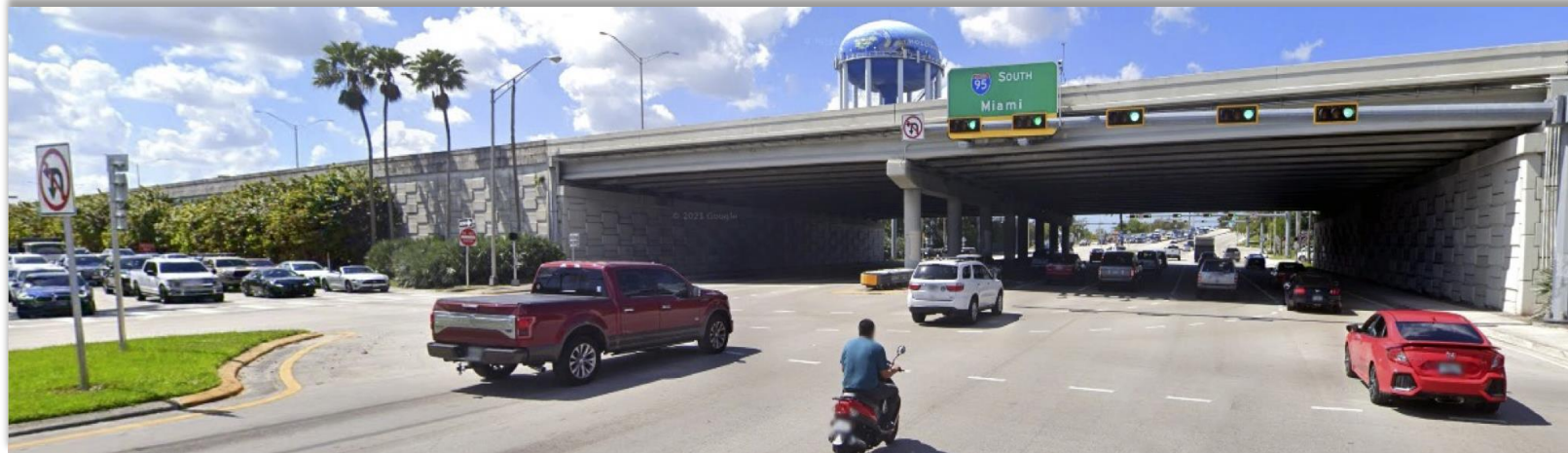
- **Connectivity**

- ✓ The project will enhance connectivity to employment centers, schools, and recreational facilities



Truck, Transit, Bicycle, and Pedestrian Needs

- Part of the National Highway Freight Network
 - ✓ About 9% of traffic are trucks
- Serves premium express transit routes for Broward County and Miami-Dade County.
- At the interchanges, generally there is a lack of dedicated bicycle facilities.
 - ✓ There is opportunity to provide bicycle facilities along roadway arterials.



PD&E Study Milestone Schedule

Activity	2023				2024				2025				2026			
	Jan - March	April - June	July - Sept	Oct - Dec	Jan - March	April - June	July - Sept	Oct - Dec	Jan - March	April - June	July - Sept	Oct - Dec	Jan - March	April - June	July - Sept	Oct - Dec
Begin Study		★														
Data Collection		↔														
Hybrid Public Kick-off Meeting				★	We are here											
Engineering & Environmental Analysis			↔													
Hybrid Public Alternatives Workshop						★										
Draft Documentation							↔									
Hybrid Public Hearing										★						
PD&E Study Approval (LDCA)													★			

↔ **Public Engagement** ↔

Next Phases:
 Design (Funded)
 Right of Way (Unfunded)
 Construction (Unfunded)

FDOT will coordinate meetings with the public, agencies and stakeholders throughout the entire study

Public Meetings



- ✓ Public Kick-off Meeting
- ✓ Alternatives Public Workshop
- ✓ Public Hearing

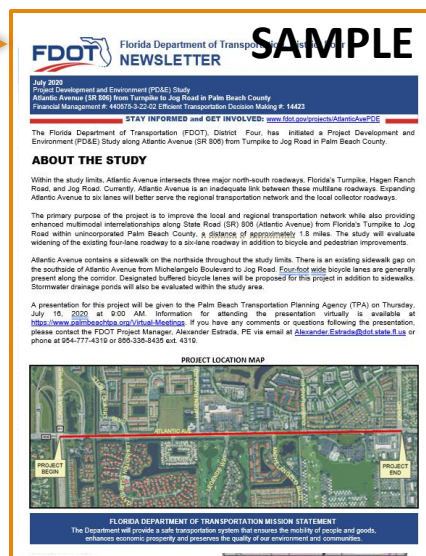
Other Meetings

Newsletters

Project Website



www.fdot.gov/projects/i95southbrowardpde



- ✓ Small Group Meetings
- ✓ One-on-One Stakeholder Meetings
- ✓ Metropolitan Planning Organization (MPO) Board and Committee Meetings

We value your input

I-95 PD&E Study Contact

Email:

Leslie Wetherell, P.E. / FDOT Project Manager
leslie.wetherell@dot.state.fl.us

Phone: (954) 777-4438 or
(866) 336-8435, extension 4438

Mail:

FDOT District Four
Consultant Management
3400 W. Commercial Boulevard
Fort Lauderdale, FL 33309

www.fdot.gov/projects/i95southbrowardpde

SIS Contacts

Email:

Cesar Martinez, P.E.
cesar.martinez@dot.state.fl.us

Phone: (954) 777-4653 or
(866) 336-8435, extension 4653

Email:

Ronald Kareiva, P.E.
ronald.kareiva@dot.state.fl.us

Phone: (954) 777-4441
(866) 336-8435, extension 4441

Mail:

FDOT District Four
Planning and Environmental Management
3400 W. Commercial Boulevard
Fort Lauderdale, FL 33309

Thank you!

