

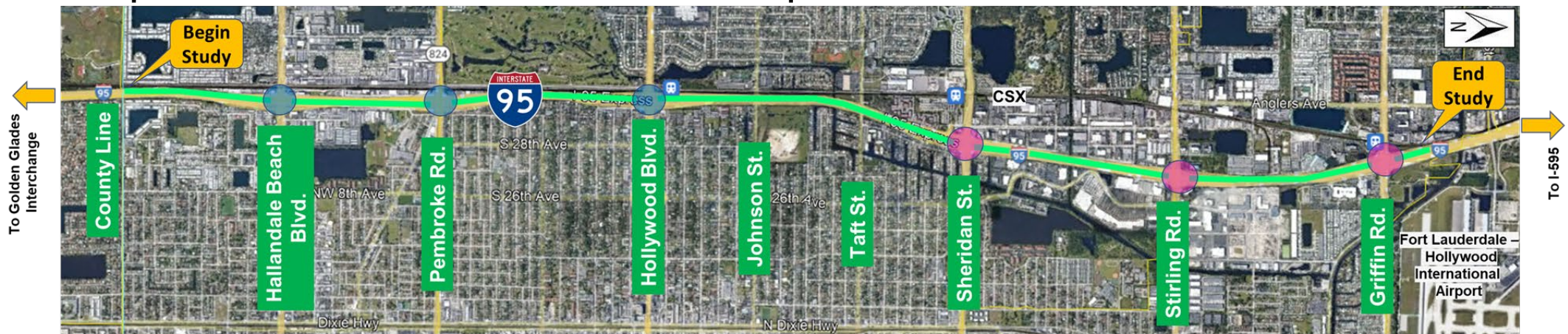
SR-9 / I-95 PD&E STUDY

from Miami-Dade / Broward County Line to North of Griffin Rd.

FPID No. 439170-1-22-02 / ETDM No. 14500



● FPID 436903-1: Study Interchanges



■ FPID 439170-1: Express Lane Study Limits
● FPID 439170-1: Study Interchanges

Sheridan Street – Diamond Interchange Improvements (Modify Existing)





SHERIDAN STREET

- Diamond Interchange additional turn lanes at the terminal intersections
- NB Off-Ramp – 3 LT + 3 RT Lanes
- SB Off-Ramp – 3 LT + 3 RT Lanes
- LOS E (60 – 70 sec delay) – AM and PM peak
- Minimal ROW acquisition required

LOS E

LEGEND:

-  DRAINAGE WITHIN FDOT R/W
-  DRAINAGE OUTSIDE OF R/W





Stirling Road - Diverging Diamond Interchange (DDI)



- Diverging Diamond Interchange
- LOS D – AM and PM peak
- Limited ROW acquisition required

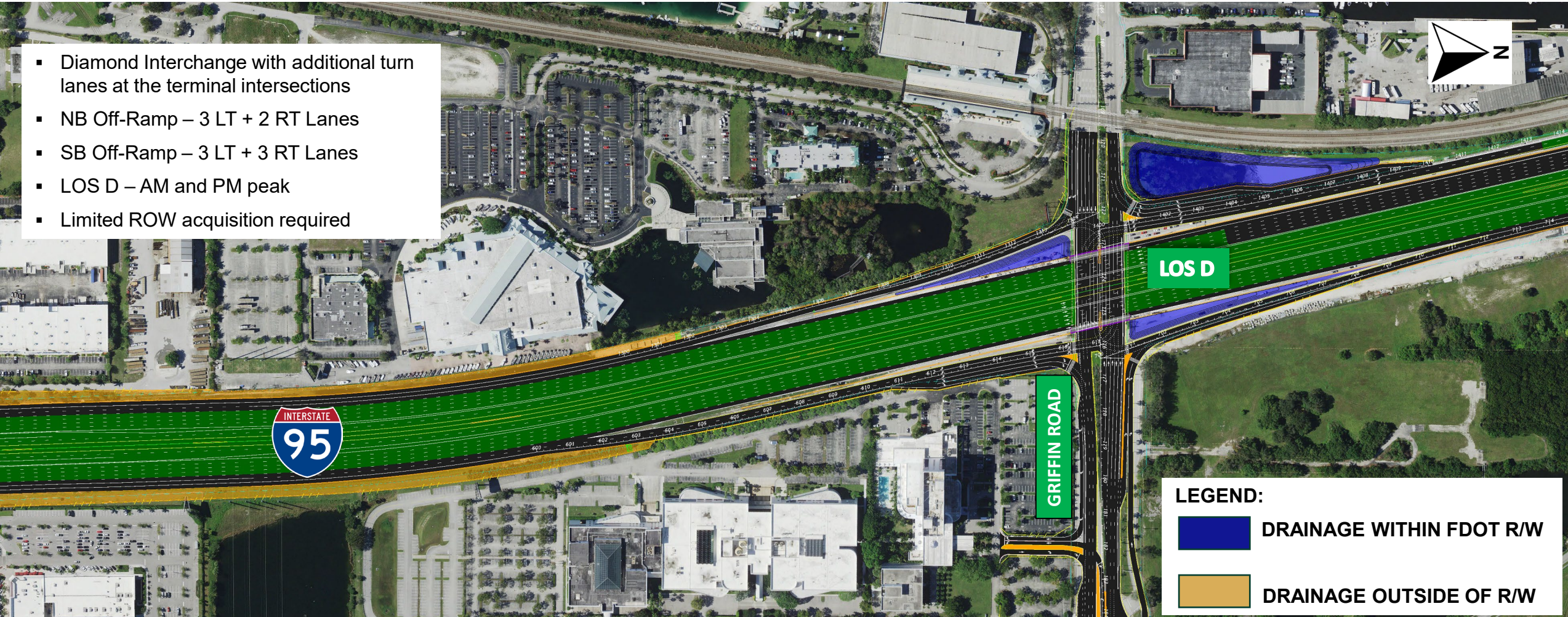


LEGEND:

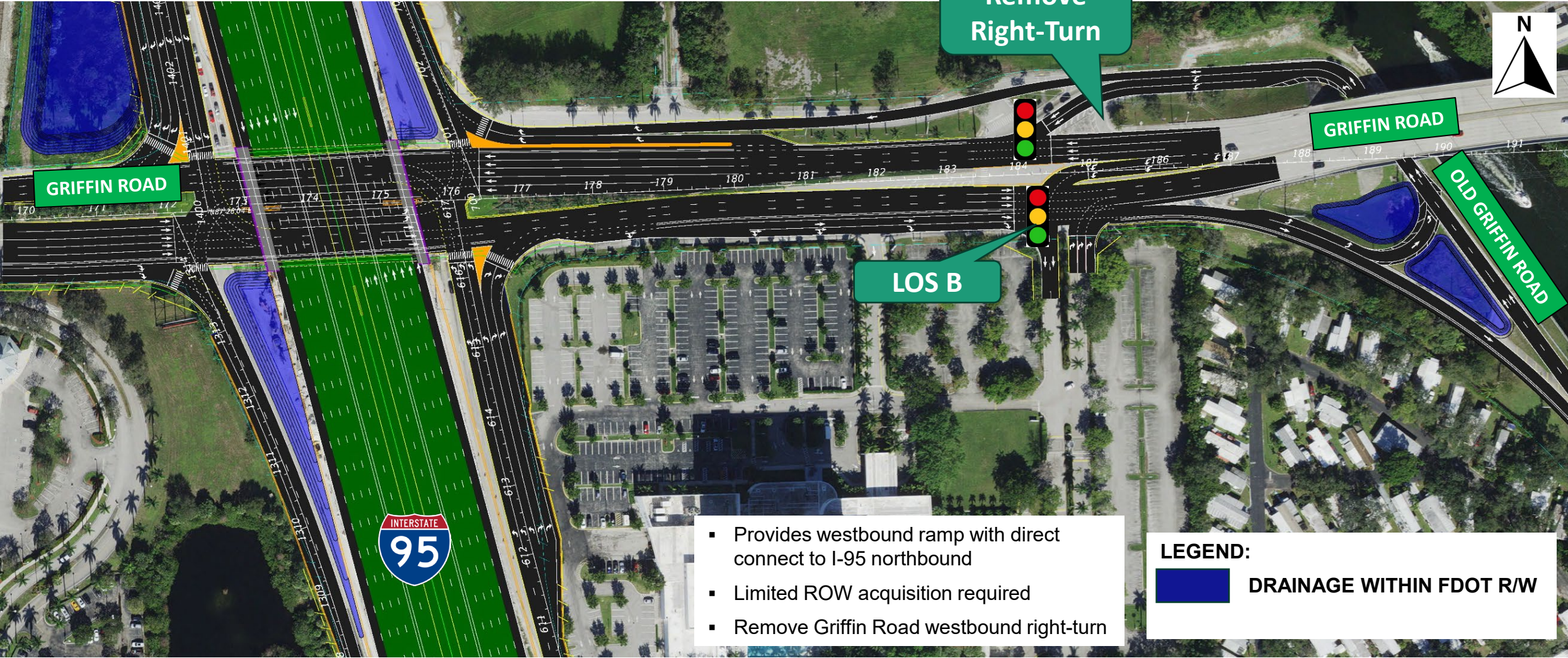
-  DRAINAGE WITHIN FDOT R/W
-  DRAINAGE OUTSIDE OF R/W

Griffin Road - Diamond Interchange Improvements (Modify Existing)

- Diamond Interchange with additional turn lanes at the terminal intersections
- NB Off-Ramp – 3 LT + 2 RT Lanes
- SB Off-Ramp – 3 LT + 3 RT Lanes
- LOS D – AM and PM peak
- Limited ROW acquisition required



Griffin Road at Old Griffin Road Intersection – No Right Turn



I-95 POTENTIAL MAINLINE IMPROVEMENTS

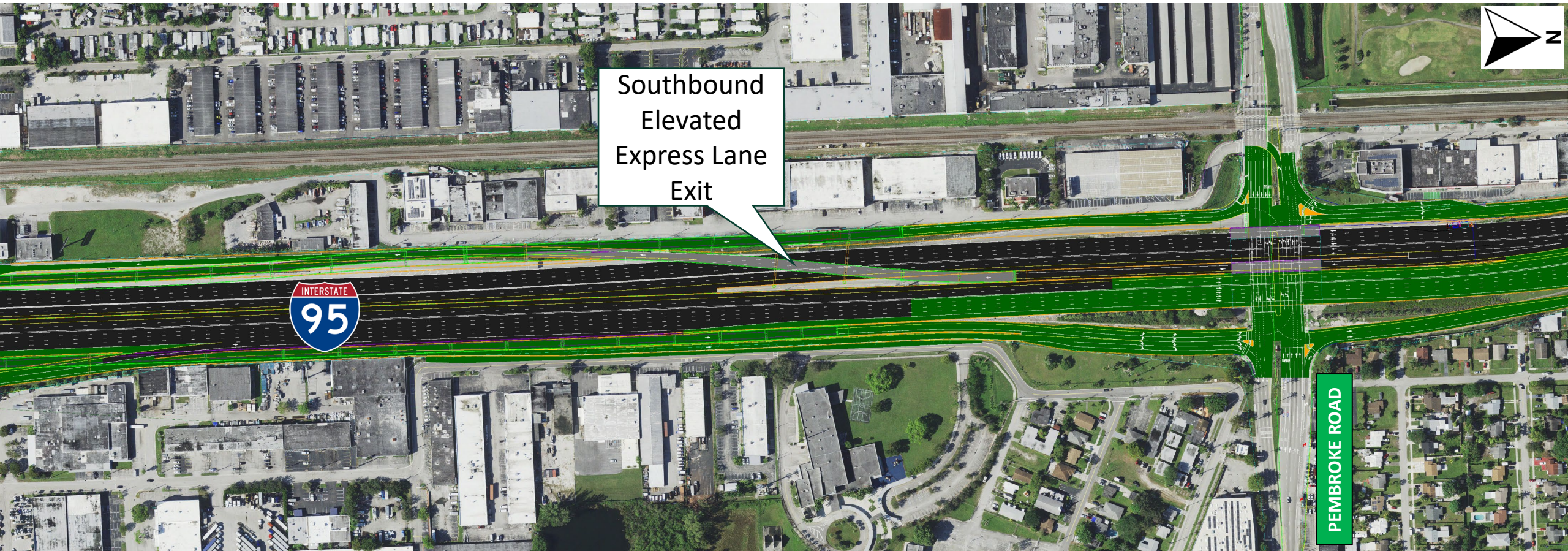
1. Interchange Improvements plus Express Lanes Elevated Access Points (Braided Ramps where Feasible)



2. Considering Combinations of 1 above plus other improvements between interchanges

- Dual on and off-ramps
- Continuous auxiliary lanes

Mainline Alternatives – SB Elevated Express Lane Exit south of Pembroke Road



Southbound
Elevated
Express Lane
Exit



PEMBROKE ROAD



Mainline Alternative – NB Elevated Express Lane Exit south of Sheridan Street

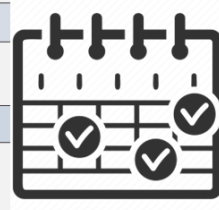


Northbound
Elevated
Express Lane
Exit

LEGEND:
 DRAINAGE WITHIN FDOT R/W

PD&E Study Milestone Schedule and Contact Information


Activity	2023				2024				2025				2026				2027
	Jan - March	April - June	July - Sept	Oct - Dec	Jan - March	April - June	July - Sept	Oct - Dec	Jan - March	April - June	July - Sept	Oct - Dec	Jan - March	April - June	July - Sept	Oct - Dec	Jan - March
Begin Study	★																
Data Collection	←→																
Hybrid Public Kick-off Meeting			★														
PAG Meeting #1					★												
Eng. & Env. Analysis			←→														
PAG Meeting #2									★								
Hybrid Public Alternatives Workshop										★							
PAG Meeting #3											★						
Draft Documentation									←→								
Hybrid Public Hearing														★			
PD&E Study Approval - Location and Design Concept Acceptance (LDCA)																	★




We are here

←→ Public Engagement


Email:
 Leslie Wetherell, P.E. / FDOT Project Manager
Leslie.Wetherell@dot.state.fl.us



Mail:
 FDOT District Four
 Consultant Management
 Leslie Wetherell, P.E.
 3400 W. Commercial Boulevard
 Fort Lauderdale, FL 33309



Call:
 (954) 777-4438 or
 (866) 336-8435, extension 4438



www.fdot.gov/projects/i95southbrowardpde

Hit and Run Awareness Month

SHOULD I STAY? OR SHOULD I GO?



STAY AT THE SCENE

And call for help.



flhsmv.gov/StayAtTheScene