

# Airport Business Plan & Impact Study



City Council Work Session  
November 4, 2024





## ***Council Focus Areas***

### **Connectivity**

- **“Forward-thinking transportation & technology networks with...multi-modal, integrated options to access Chandler’s employment corridors, local destinations and connections with Valley cities.”**

### **Economic Vitality**

- **“Strategic economic development with...A modern airport that supports business aviation and airpark area development.”**

# Facility Overview

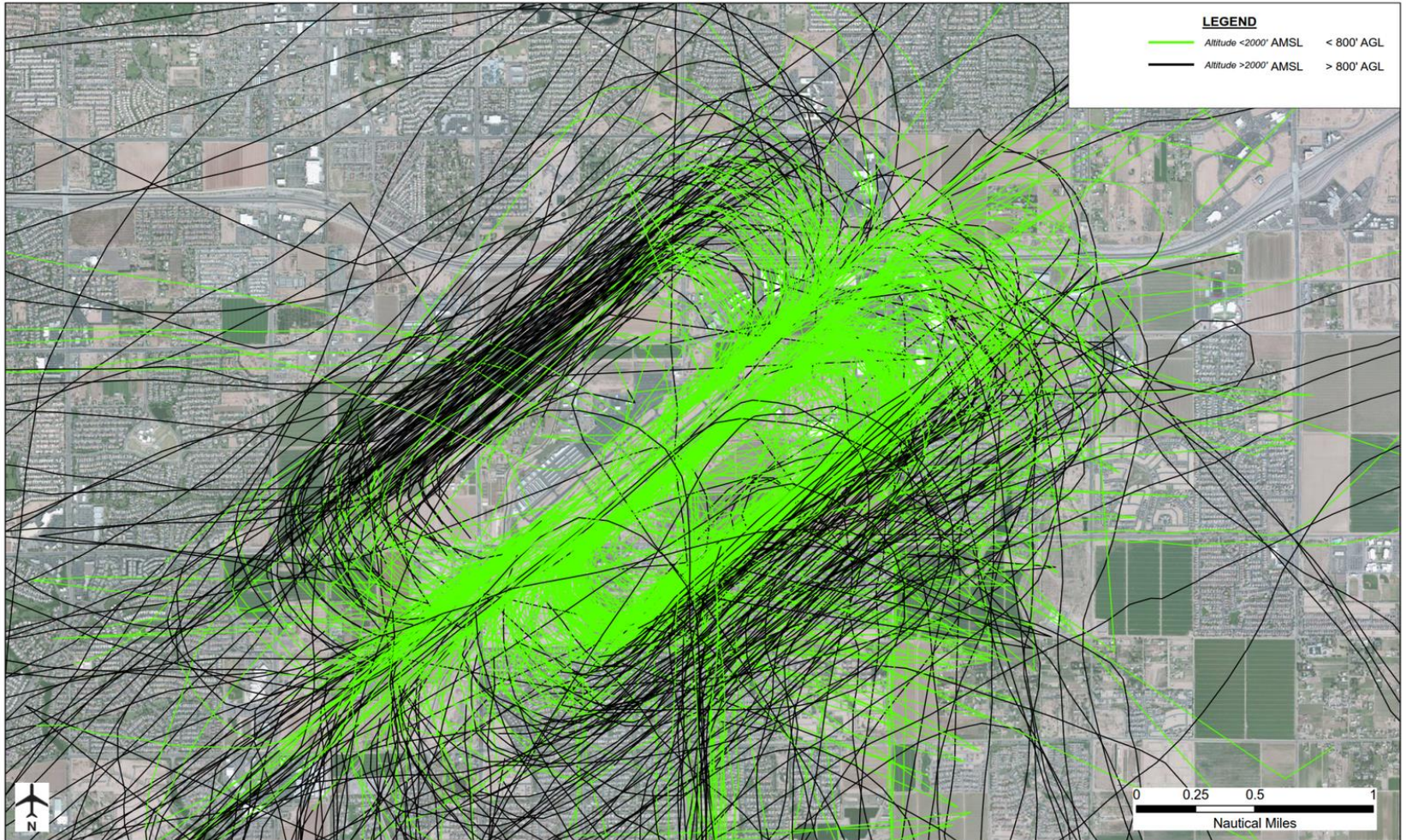
- 17<sup>th</sup> busiest GA airport in US 251,000+ operations
  - 48<sup>th</sup> busiest airport in US
  - 6<sup>th</sup> busiest airport in Arizona
  - “Regional Reliever” classification by FAA
- Two parallel runways (4,870 ft. and 4,401 ft.)
  - Only public airport in Maricopa County with runways <5,000 ft.
  - One of three GA airports in Maricopa County with two runways

# Chandler Airspace

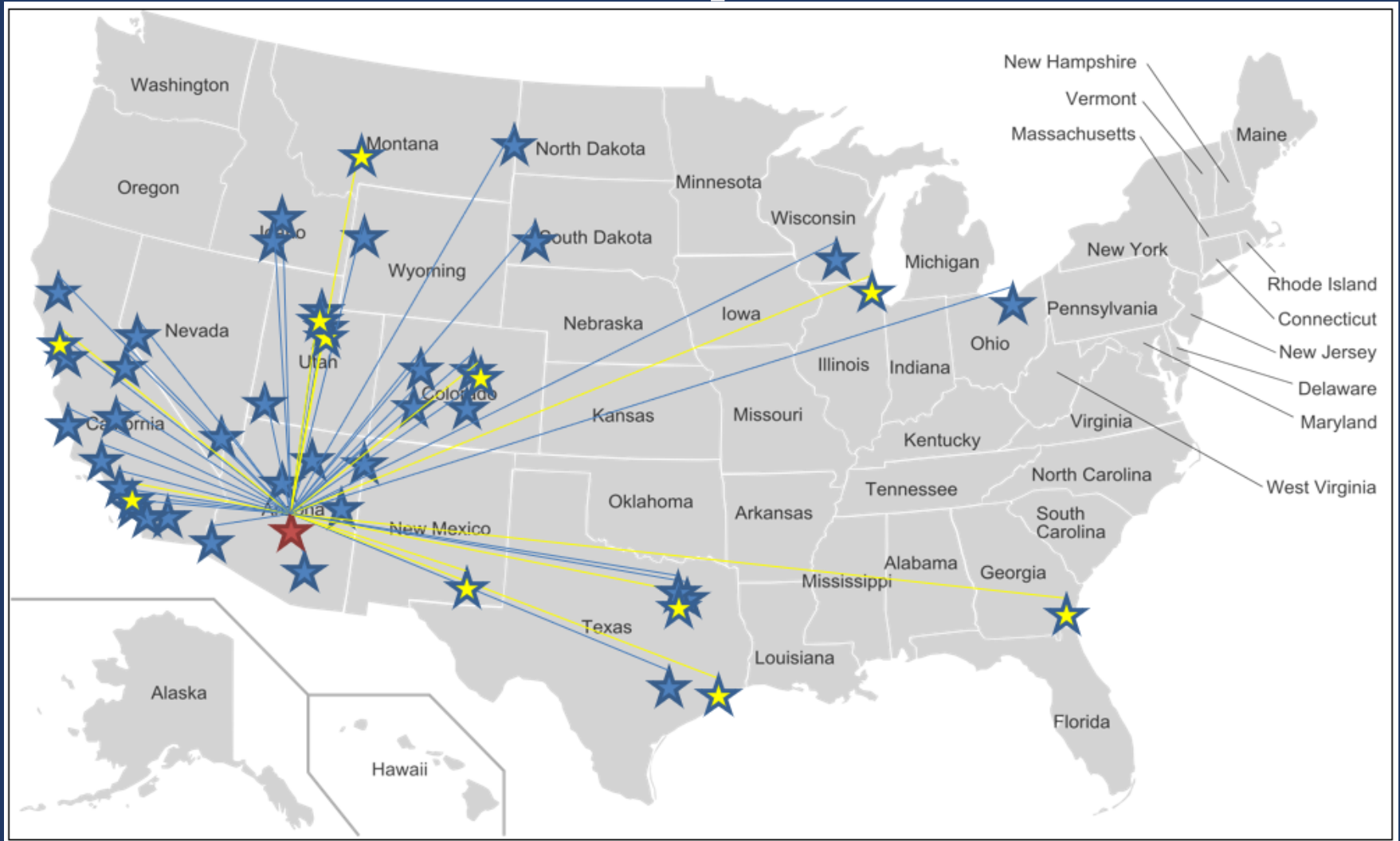
CHANDLER MUNICIPAL AIRPORT - 2/5/13 All Operations

## LEGEND

- Altitude <2000' AMSL < 800' AGL
- Altitude >2000' AMSL > 800' AGL



# Chandler Airport's Reach



# Facility Overview

Category	Quantity
Land Area	~550 acres
Total Building Square Footage	~465,000 sf
Based Aircraft (as of 8/7/2020)	443
City-owned Hangars	116
City-owned Open Tie Downs	233
City-owned Shaded Tie-Downs	12
Privately-owned Hangars	141

# Facility Overview

- ~100 unleased, developable acres
- ~20 acres on the north
- ~80 acres on the south

# Facility Overview

Aeronautical businesses include:

- Flight training
- Fixed base operator
- Charter services
- Aircraft repair & maintenance
- Aircraft sales
- Aircraft avionics
- Aircraft rental





# Facility Overview

- Predominately flight training, private recreational flying and business aviation
- Anchors the Chandler Airpark, second largest employment center in Chandler
- One of the busiest contract control towers in the nation
- Tower is owned and maintained by Chandler
- Large heliport
- Seven Airport staff
  - Three in Business & Administration
  - Four in Operations & Maintenance



# AGENDA



## Airport Projects Overview



## Airport Strategic Business Plan



## Community Impact Study



# Airport Projects Overview

## Past Projects

- 2020 Airport Master Plan
- 2021 Airpark Area Plan
- 2020 Bond Projects
  - Replace Tower Transceiver Radios
  - Wildlife Exclusion Fence
- ADOT Pavement Maintenance (multiple phases)
- Taxiway C Rehabilitation
- Control Tower Internet
- Terminal Renovations
- Terminal Sewer Replacement
- North Terminal Apron Rehabilitation – Phase 1
- Runway & Taxiway Safety Area Infield Drainage Improvements/Low-Flow Channel
- Control Tower Signage
- Hangar Electrical System Upgrades
- Gate Access System Replacement

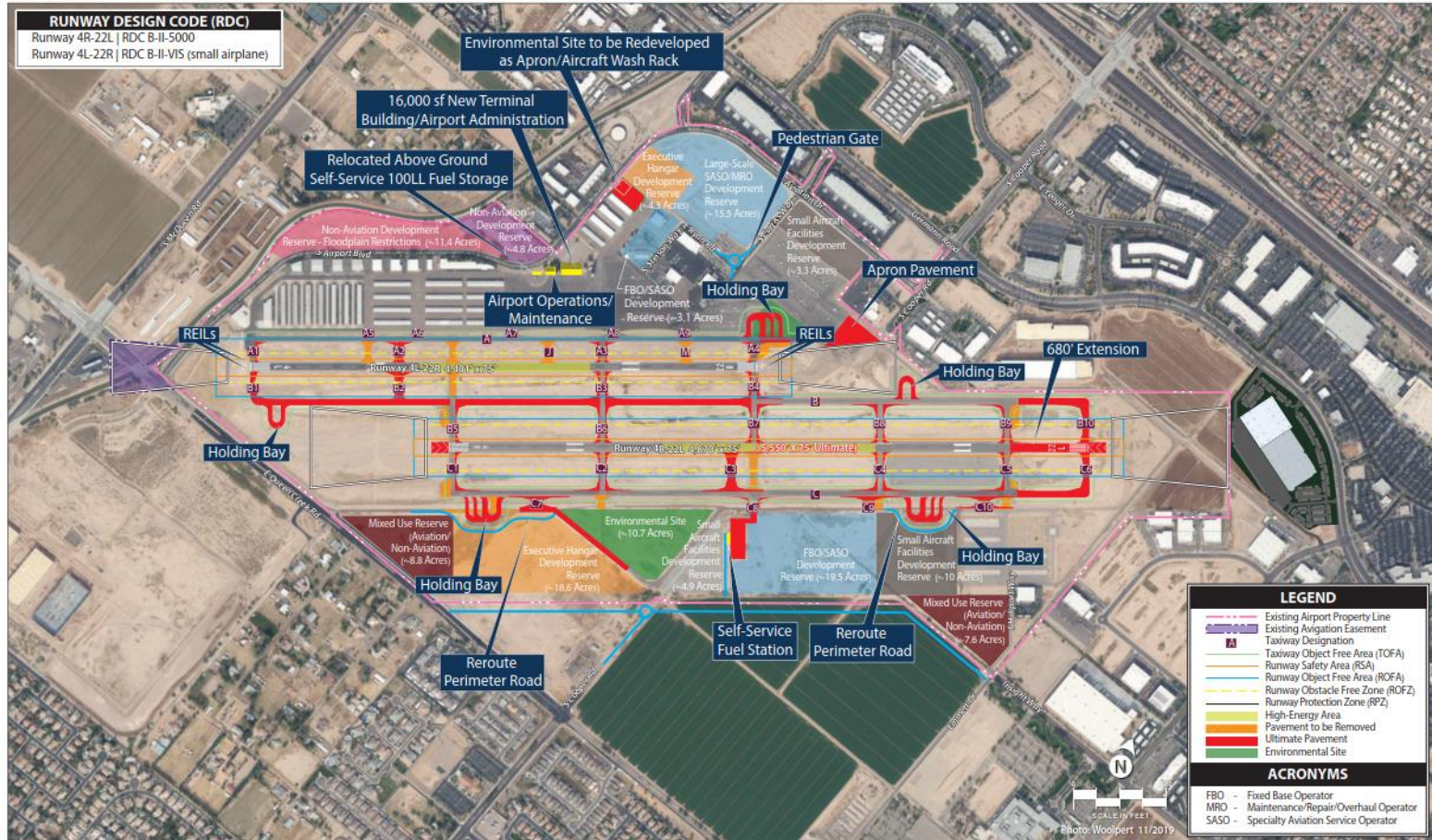
## Current Projects

- Airport Strategic Business Plan
- Runway Community Impact Study
- K&K Environmental Remediation
- Taxiway B Extension - Phase1
- Taxiway C Electrical Replacement
- West Facilities Upgrade
  - Aircraft Observation Area
  - Airport Operations Garage
- Airport Weather Observation System
- Former Heliport Redevelopment
- 2021 Bond Projects
  - Cooper Road/Insight Way Collector
  - Airport Fuel Tank Replacement

## Future Projects

- Hangar Area Pavement Reconstruction
- South Runway Rehab
- Private Hangar Development
- North Airfield Lighting Replacement
- Replace Precision Approach Path Indicators
- North Runway - Runway End Lights
- Armory Ramp Rehabilitation – Phase 1
- Armory Ramp Rehabilitation – Phase 2
- North Terminal Apron Rehabilitation – Phase 2
- Reconstruct North Terminal Taxilane
- Reconstruct San Tan Apron Phase 1
- Reconstruct San Tan Apron – Phase 2
- Reconstruct Heliport Pavement
- Construct Taxiway Connectors

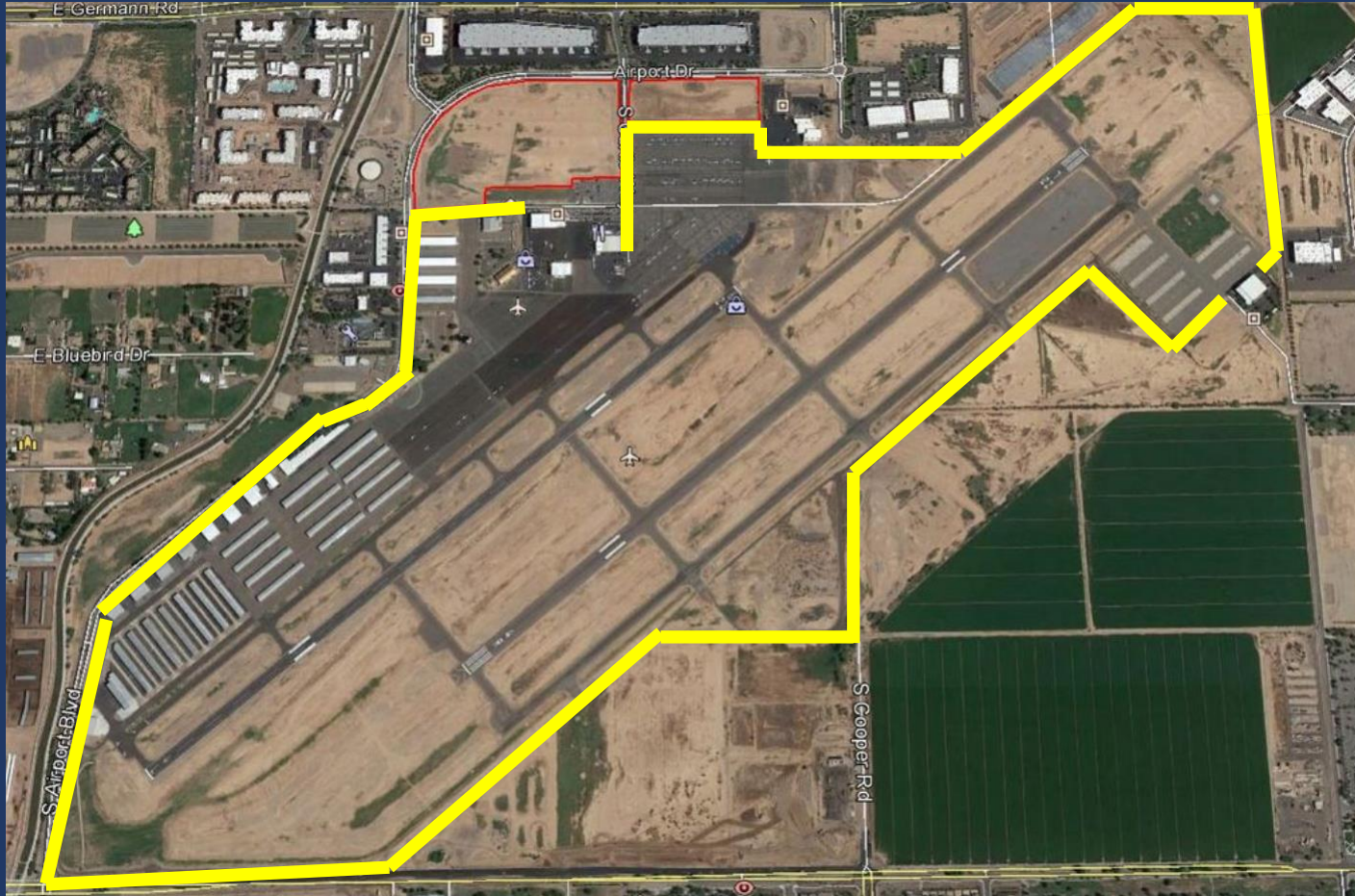
# Past Airport CIPs



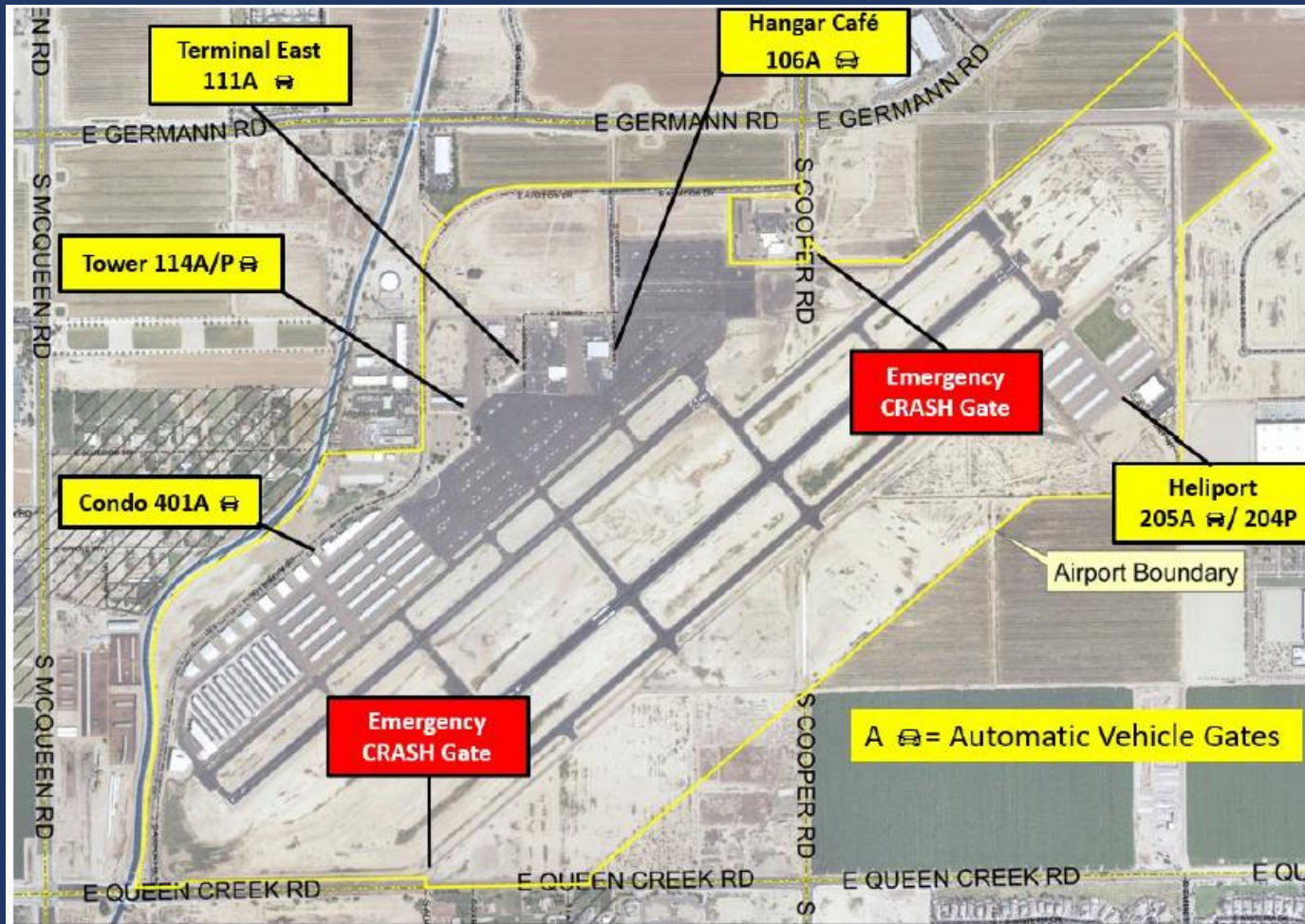
# Replace Tower Transceivers



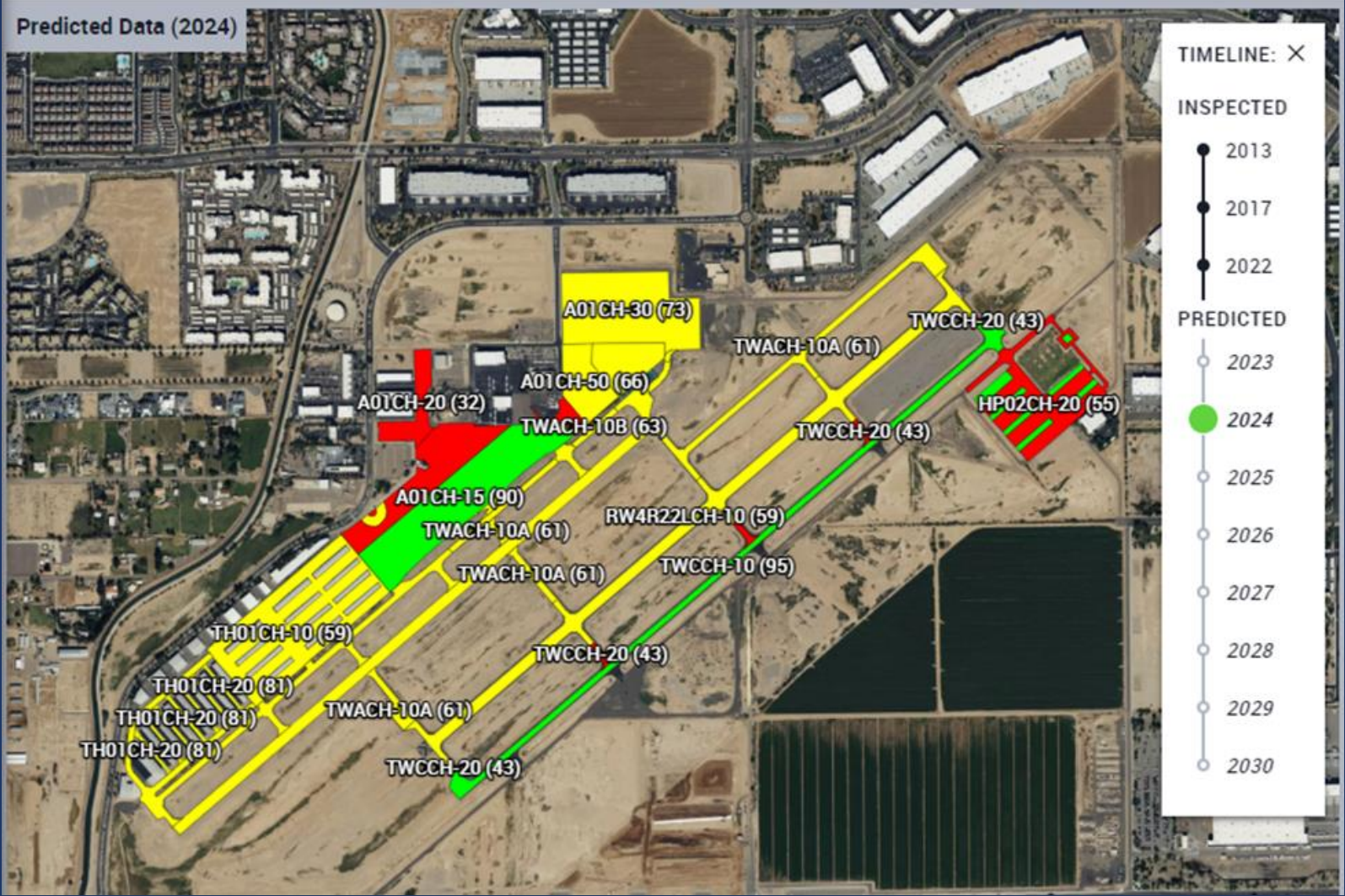
# Wildlife Perimeter Fence



# "Bump" Gates Installation

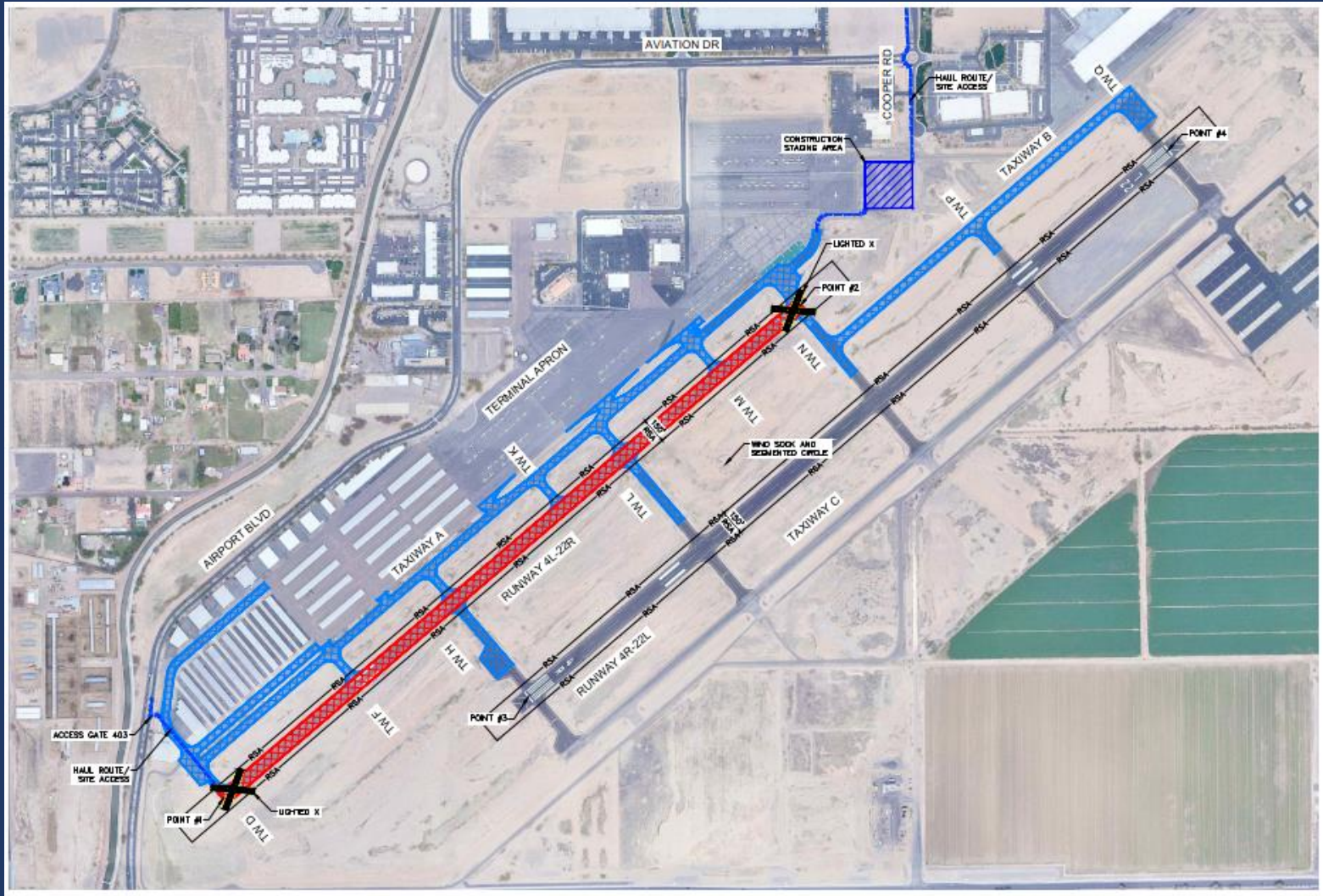


# Annual Pavement Maintenance

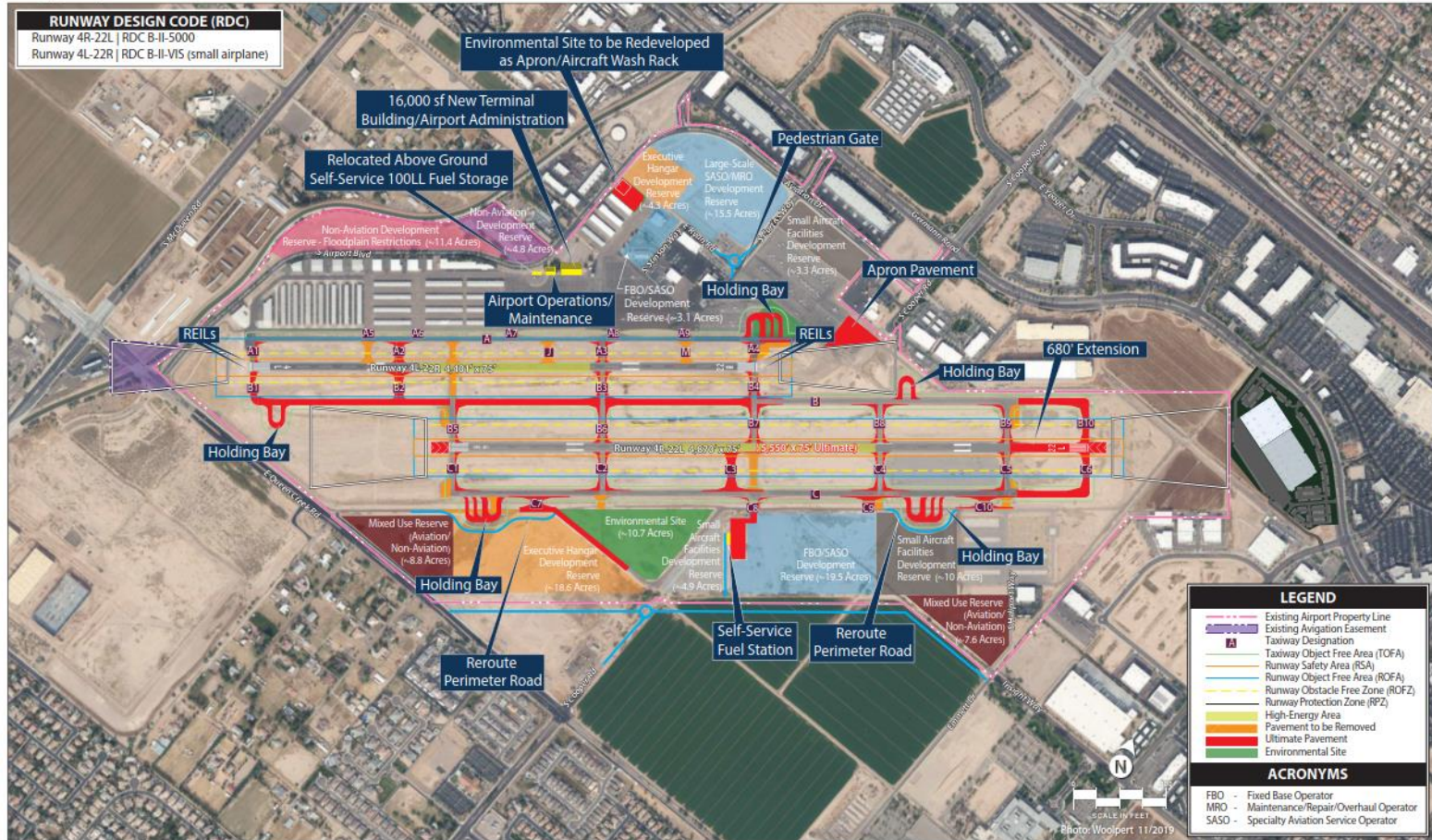




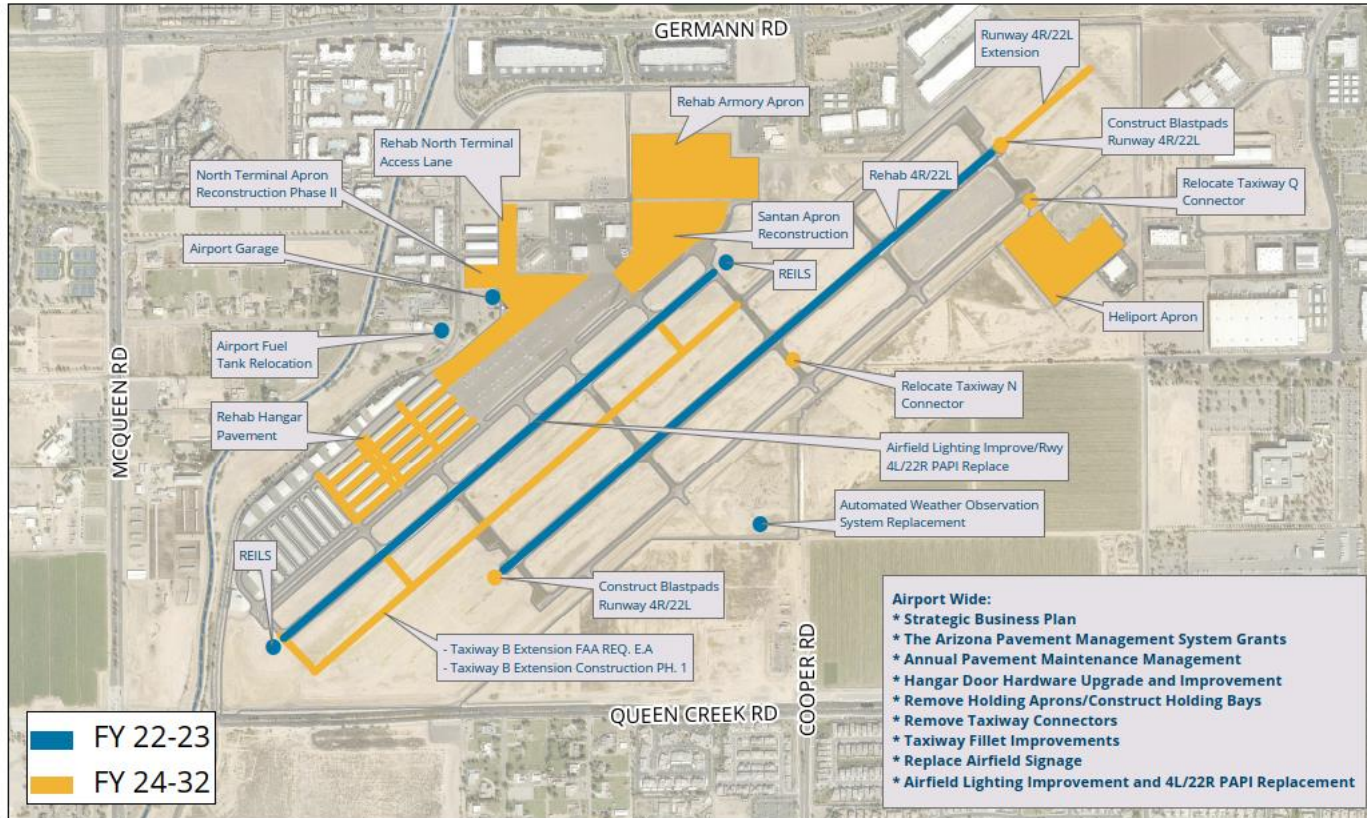
# ADOT APMS Grant Pavement Sealing



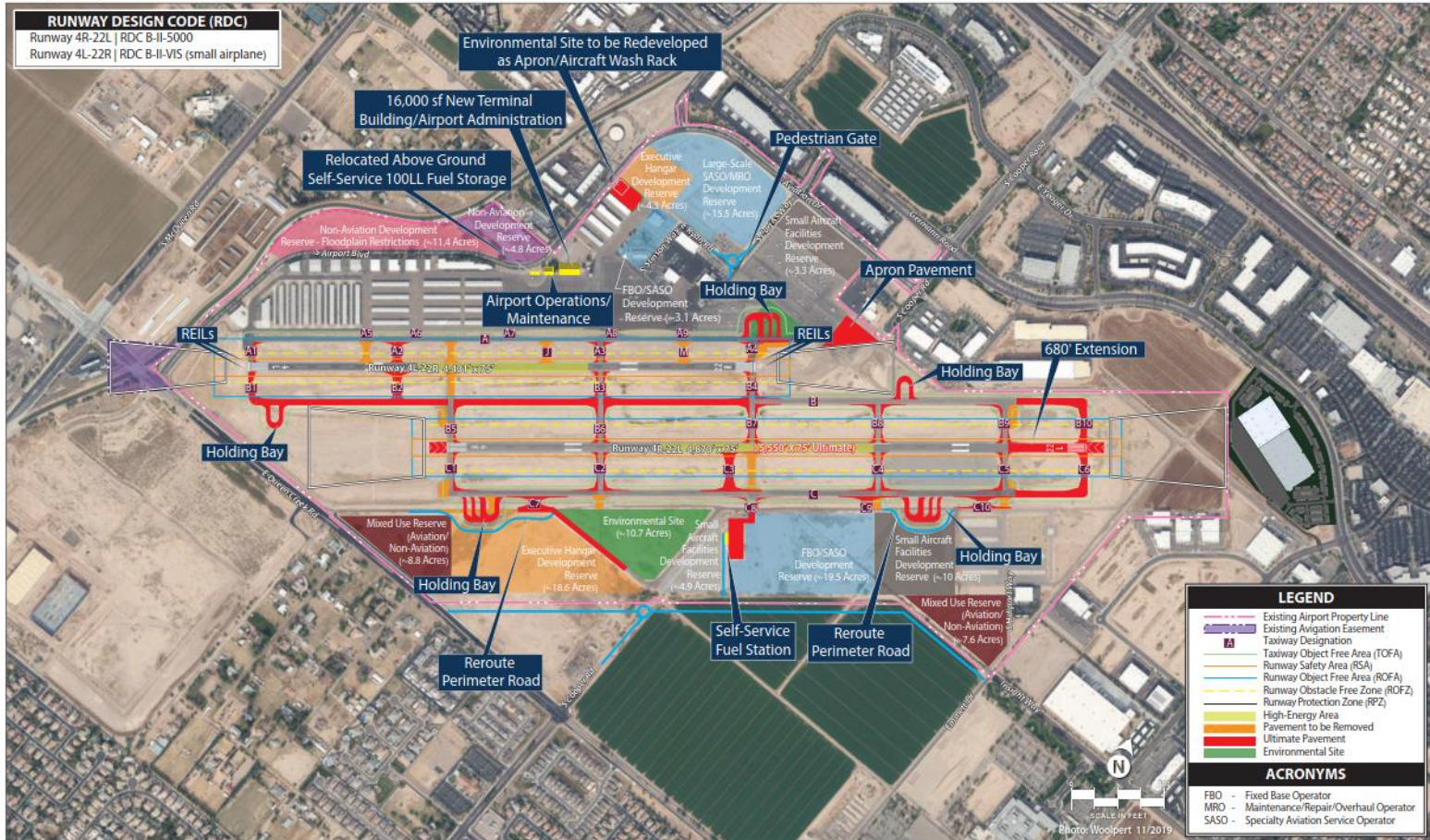
# Current Airport CIPs



## Airport Capital Improvement Program Fiscal Years 2023 - 2032



# Future Airport CIPs



**RUNWAY DESIGN CODE (RDC)**  
 Runway 4R-22L | RDC B-II-5000  
 Runway 4L-22R | RDC B-II-VIS (small airplane)

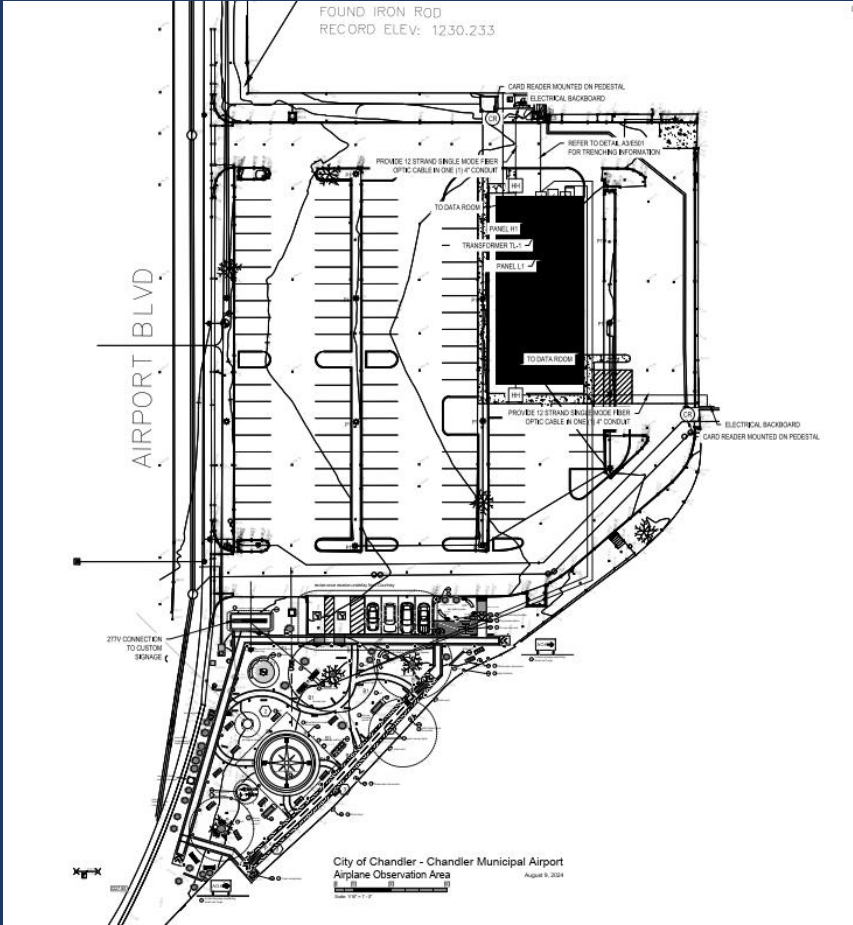
**LEGEND**

- Existing Airport Property Line
- Existing Avigation Easement
- Taxway Designation
- Taxway Object Free Area (TOFA)
- Runway Safety Area (RSA)
- Runway Object Free Area (ROFA)
- Runway Obstacle Free Zone (ROFZ)
- Runway Protection Zone (RPZ)
- High-Energy Area
- Pavement to be Removed
- Ultimate Pavement
- Environmental Site

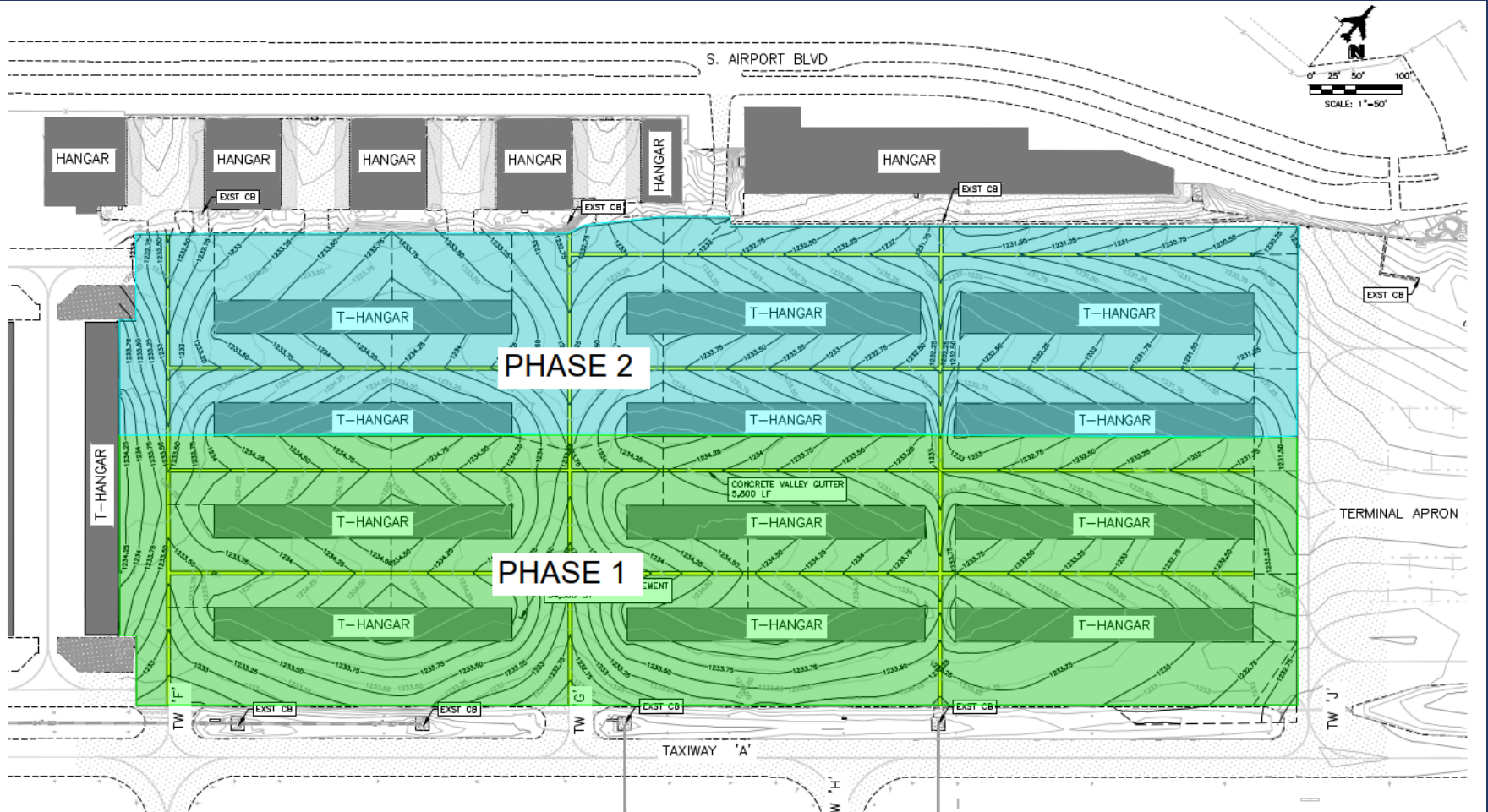
**ACRONYMS**

- FBO - Fixed Base Operator
- MRO - Maintenance/Repair/Overhaul Operator
- SASO - Specialty Aviation Service Operator

# West Facilities Upgrade



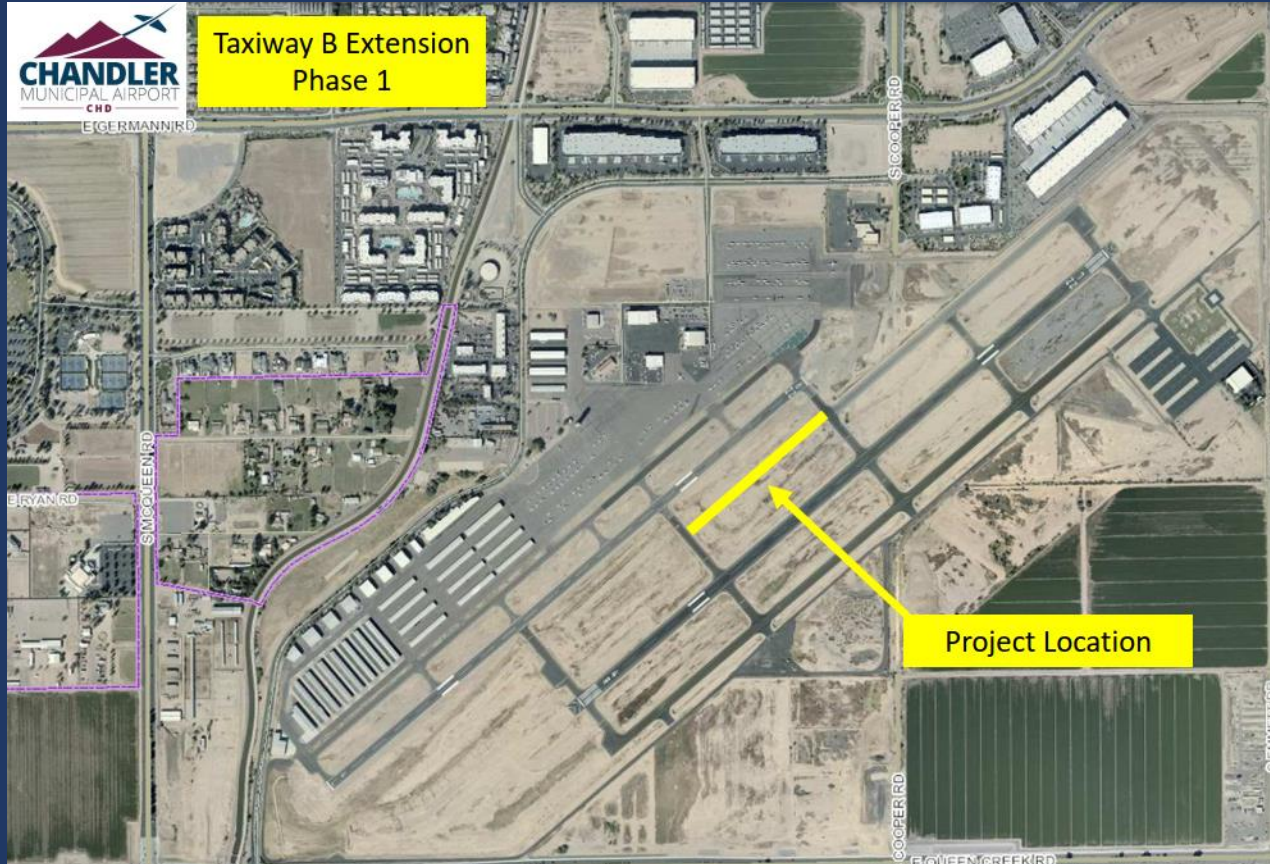
# Hangar Area Pavement





# ADOT Grant - Taxiway Bravo Extension

o 100% ADOT Grant





# FAA Grant – RWY 4R-22L Rehabilitation



# AGENDA



## Airport Strategic Business Plan

Project Overview

SWOT Results

Market Analysis

Mission, Vision, & Values  
Statements

Financial Analysis

Goal Setting

Next Steps



## Community Impact Study

Airport Day

Project Overview

Project Approach

Stakeholders

Phasing Plan



# AIRPORT STRATEGIC BUSINESS PLAN





# **Airport Strategic Business Plan**

## **- Introduction -**

**A Strategic Airport Business Plan uses a logical and disciplined structure to set out the mission, vision, values, goals, objectives, and actions plans that drive the day-to-day management of the Airport.**



**In essence, a Strategic Airport Business Plan transforms the Mission and Vision for the Airport into specific Goals, Objectives, and Action Plans for each functional area of the Airport.**



# Airport Strategic Business Plan

## - Reasons for a Business Plan -

Generate  
More  
Revenue

Reduce or  
Eliminate  
Expenses

Secure More  
Funding

Rely Less on  
Subsidies

Create More  
Jobs



**AIRPORT BUDGET  
OVERVIEW**

**General Government**

**Airport - 4100**

**Budget Summary**

Description	2022-23 Actual Expenditures	2023-24 Adopted Budget	2023-24 Adjusted Budget	2023-24 Estimated Expenditures	2024-25 Adopted Budget	% Change Adopted to Adopted
Personnel Services						
Total Personnel	\$ 753,924	\$ 855,481	\$ 877,950	\$ 869,000	\$ 869,925	1.69%
Ongoing*	-	853,497	875,966	867,016	869,925	1.92%
One-time*	-	1,984	1,984	1,984	-	-100.00%
Professional/Contract Services	107,781	83,882	120,968	119,766	55,866	-33.40%
Operating Supplies	124,102	310,200	311,550	308,770	285,423	-7.99%
Repairs and Maintenance	181,466	58,720	119,685	123,630	58,720	0.00%
Communication/Transportation	2,952	12,255	12,255	12,155	12,255	0.00%
Insurance and Taxes	18,075	34,500	34,500	34,500	34,500	0.00%
Rents and Utilities	73,774	89,358	89,358	89,538	89,358	0.00%
Other Charges and Services	21,209	22,700	22,700	20,045	12,700	-44.05%
Building and Improvements	131	-	-	-	-	N/A
Machinery and Equipment	74,354	5,500	5,500	-	2,000	-63.64%
Office Furniture and Equipment	4,311	-	-	-	47,000	N/A
Street Improvements	-	4,500	4,500	-	4,500	0.00%
Capital Replacement/Fund Level Transfers	17,717	17,717	17,717	17,717	17,717	0.00%
<b>Total Cost Center - 4100</b>	<b>\$ 1,379,796</b>	<b>\$ 1,494,813</b>	<b>\$ 1,616,683</b>	<b>\$ 1,595,121</b>	<b>\$ 1,489,964</b>	<b>-0.32%</b>
<b>Airport Operating Fund</b>	<b>\$ 1,379,796</b>	<b>\$ 1,494,813</b>	<b>\$ 1,616,683</b>	<b>\$ 1,595,121</b>	<b>\$ 1,489,964</b>	

\* Ongoing and One-time Personnel Services detail not available for 2022-23 Actual Expenditures.

\*\* The Adopted Budget for operating grant funding is in cost center 1290, Non-Departmental. The Adjusted Budget, Actual Expenditures, and Estimated Expenditures are reflected as Grant Fund.



**AIRPORT BUDGET**  
– CAPITAL –

## Capital Budget

City of Chandler  
2024-25 Adopted Budget

		Airport Capital - 4110			
		Carryforward Appropriation		2024-25 New Appropriation	2024-25 Total Appropriation
Program #	Program Name	Encumbered Purchase Orders	Unencumbered February 2024		
6AI238	Taxiway B Construction	\$ 193,494	\$ 1,987,416	\$ -	\$ 2,180,910
6AI661	AWOS Replacement	-	175,400	-	175,400
6AI702	Replace Tower Transceiver Radios	-	443,027	-	443,027
6AI728	Airfield Lighting Improve/Runway 4L/22R	-	-	2,428,001	2,428,001
6AI729	Wildlife Exclusion Perimeter Fence	15,152	71,899	-	87,051
6AI734	Hanger Electrical Rewiring	5,452	69,138	-	74,590
6AI735	Runway 4R/22L Extension Community Impact Study	-	998,633	-	998,633
6AI736	Annual Pavement Maintenance Management	20,102	-	370,000	390,102
6AI737	Rehabilitate Runway 4R/22L Pavement	110,848	5,993,520	-	6,104,368
6AI746	Airport Fuel Tank Relocation	81,251	492,735	-	573,986
6AI753	Install REILS Runway 4L-22R	-	898,410	202,500	263,162
6AI754	Airport Strategic Business Plan Study	-	125,000	-	118,913
6AI755	West Airport Facilities Upgrade	30,805	318,579	3,900,000	4,798,410
6AI756	Hangar Door Hardware and Repair	-	560,000	-	125,000
6AI760	Old Heliport Redevelopment	-	-	-	349,384
6AI767	Taxiway C Electrical and Lighting	-	-	-	560,000
6AI769	Hangar Maintenance Program	-	-	50,000	50,000
6AI770	Hangar Area Pavement Reconstruction	-	-	4,160,000	4,160,000
<b>Total Capital Program Budgets</b>		<b>\$ 464,504</b>	<b>\$ 12,305,932</b>	<b>\$ 11,110,501</b>	<b>\$ 23,880,937</b>
Fund					
417	Capital Grants	\$ 320,506	\$ 8,032,686	\$ 2,521,969	\$ 10,875,161
635	Airport Operating Enterprise	143,998	4,273,246	8,588,532	13,005,776
<b>Total Capital Program Funding</b>		<b>\$ 464,504</b>	<b>\$ 12,305,932</b>	<b>\$ 11,110,501</b>	<b>\$ 23,880,937</b>



**AIRPORT BUDGET  
OVERVIEW**

**Financial and Personnel Overviews**

**Enterprise Operational Funds Revenues and Expenditures**

Enterprise Funds are a type of fund in which the services provided are financed and operated similarly to a private business, where the costs of providing goods or services is financed through user fees and is self-sustaining in most cases.

**Revenues**

	2023-24 Adopted Budget	2024-25 Adopted Budget	% Change Adopted to Adopted
Water Services	\$ 54,568,073	\$ 60,620,911	11.1%
Reclaimed Water Services	1,656,500	1,700,000	2.6%
Wastewater Services	141,696,812	109,269,049	-22.9%
WW Industrial Process Treatment	15,842,737	19,187,857	21.1%
Solid Waste Services	18,697,904	19,288,400	3.2%
<b>Airport Services</b>	<b>963,988</b>	<b>1,195,988</b>	<b>24.1%</b>
Other Revenues	2,918,490	4,923,589	68.7%
Fund Balance less Transfers In/Out	187,234,454	172,669,382	-7.8%
<b>Total Enterprise Operational Funds</b>	<b>\$ 423,578,958</b>	<b>\$ 388,855,176</b>	<b>-8.2%</b>

**Expenses**

	2023-24 Adopted Budget	2024-25 Adopted Budget	% Change Adopted to Adopted
Water	\$ 103,259,298	\$ 107,480,238	4.1%
Reclaimed Water	2,208,891	2,568,170	16.3%
Wastewater	269,758,394	215,538,594	-20.1%
WW Industrial Process Treatment	15,205,907	19,998,561	31.5%
Solid Waste	25,873,079	28,371,101	9.7%
<b>Airport</b>	<b>7,273,389</b>	<b>14,898,512</b>	<b>104.8%</b>
<b>Total Enterprise Operational Funds</b>	<b>\$ 423,578,958</b>	<b>\$ 388,855,176</b>	<b>-8.2%</b>



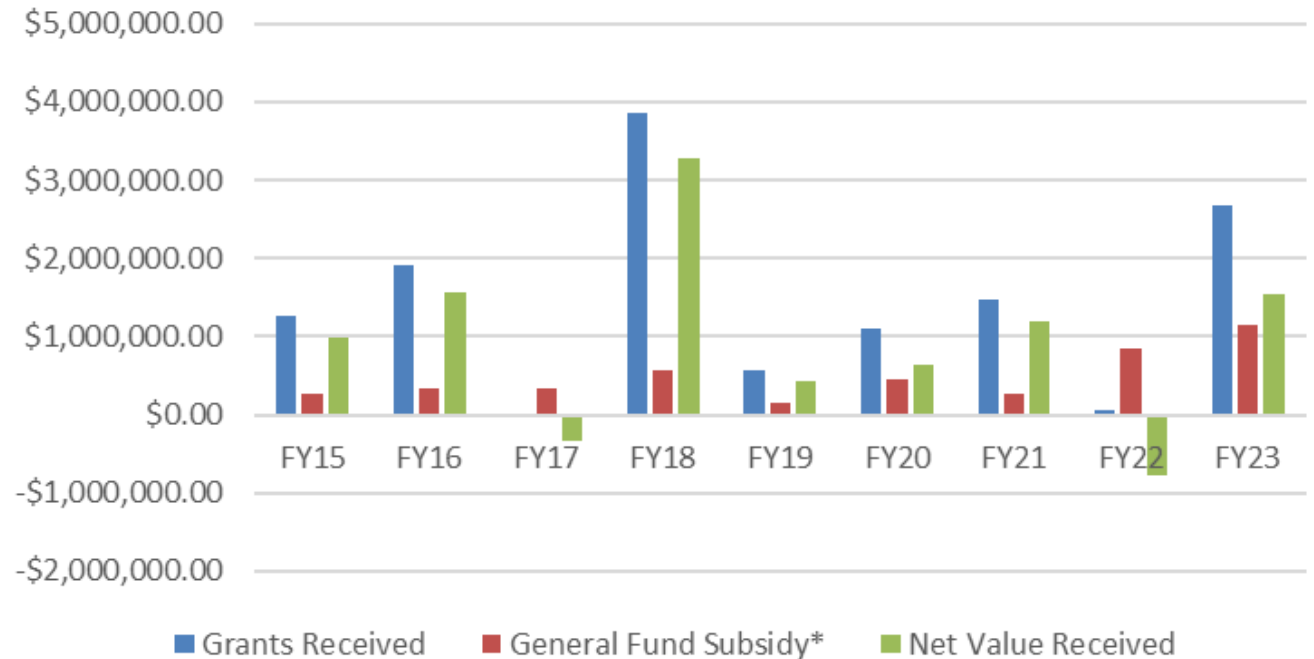
# Airport Strategic Business Plan

## - Reasons for a Business Plan -



AIRPORT BUDGET  
OVERVIEW

Airport FY15 - FY23 Enterprise Totals





# Airport Strategic Business Plan

## - Reasons for a Business Plan -



Since FY 2021, the Airport received \$5,119,017 in FAA and ADOT capital project grants.



The City's local match for these grants totaled \$132,820 for a return on investment of 3,854% or more than 38 times the local match amount.

# Airport Strategic Business Plan

## *Elements*



### **Mission Statement**

Reason for the Airport's existence

Airport core competencies



### **Vision Statement**

Articulates aspirations

Picture of success



### **Values Statement**

Outlines the Airport's collective beliefs

Enduring and will not be abandoned.



# Airport Strategic Business Plan

## *Elements*



### **Goals**

Help realize the Airport's mission & vision



### **Objectives**

Steps to achieve the Airport's goals



### **Action Plans**

Steps to achieve the Airport's objectives



# Airport Strategic Business Plan

Airport Management Consulting Group  
Council Approval on February 23, 2023

## *Phases*



# Airport Strategic Business Plan

## *Elements*



**Education**



**Policymaker Buy-In**



**Determine Approach**



**Form Planning Team**



**Brief Planning Team**



## ***Phase 2***

# ***Development***

- Approach
  - Airport/Market Assessments (complete)
  - SWOT Analysis (complete)
  - Develop Mission, Vision, & Values Statements
  - Establish & prioritize Goals (complete)
  - Develop & prioritize Objectives (in progress)
  - Formulate Action Plans & Budgets (in progress)
  - Draft, review, & finalize the Plan
  - Obtain approval of the Plan



## ***Steering Committee***

- Andy Bass, CoC, Deputy City Manager
- Ryan Reeves, Airport Manager
- Scott Rinkenberger, Airport Operations Manager
- Chris Andres, Airport Planning Administrator
- Michael Winer, CoC Economic Development
- Terri Kimble, Chandler Chamber of Commerce
- Thomas Mathew, Chandler Air Service
- Neil Jones, Quantum Helicopters
- Frank Setzler, Chandler Aviation
- Chris Schuld, CHD Tenant & Local Business Owner
- Chris Hawley, Chairman, CHD Airport Commission
- Jared Yoshiki, Aircraft Owners & Pilots Association
- Phil Derner, National Business Aviation Association



# ***SWOT Analysis - Outline -***

1. Strengths & Weakness Elements (Internal to the City)
  - I. Airport Sponsor Organization
  - II. Airport Organization
  - III. Airport Finance
  - IV. Airport Planning, Management, & Compliance
  - V. Airport Facilities & Improvements
  - VI. Airside Land & Infrastructure
  - VII. Landside Land & Infrastructure
2. Opportunity & Threat Elements (External to the City)
  1. Airport Location
  2. Airport Demographics
  3. Market Demographics
  4. General Aviation Products, Services, & Facilities
  5. Community Environment
  6. General Environment



# ***SWOT Analysis - Results -***

- All Airport Tenants canvassed through physical and electronic means.
- Timeline extended beyond our January 2024 Airport Day Open House.
- Responses:
  - 39% from the Airport Sponsor, Elected Officials, Management, or Staff
  - 50% from Airport Tenant or User
  - 11% from a Community Member



# **SWOT**

## **- Key Takeaways -**

- Strengths
  - Airport Customer Service
  - Facility Maintenance
  - Airport Layout Plan
  - Land Availability for Development



# **SWOT**

## **- Key Takeaways -**

- Weaknesses
  - Marketing Program
  - Aeronautical Rents
  - Hangar Availability
  - Runway Length
  - Runway Ordinance



# **SWOT**

## **- Key Takeaways -**

- Opportunities
  - Proximity to Major Highways
  - Number & Type of Aircraft Operations
  - Aircraft Charter Operations
  - Local Economy
  - Airport Economic Impact



# **SWOT**

## **- Key Takeaways -**

- Threats
  - Proximity to Residential Areas
  - Hangar Availability
  - Political Climate (local, state, & federal)
  - Capital Funding (local, state, & federal)



# ***Market Assessment - Key Takeaways -***

- Economic Impact
  - 58,600 out-of-state visitors
  - \$11.5 million in visitor spending
  - 479 total jobs
  - \$20.7 million in employee earnings
  - \$55.8 million in total impact to the state economy







# Market Assessment - Direct Competitors -

Direct Competitive Airports

Airport	FAA Identifier	Location
Phoenix-Mesa Gateway	IWA	Mesa
Falcon Field	FFZ	Mesa
Scottsdale	SDL	Scottsdale
Phoenix Deer Valley	DVT	Phoenix
Glendale Municipal	GEU	Glendale
Phoenix Goodyear	GYR	Goodyear
Casa Grande Municipal	CGZ	Casa Grande
Ak-Chin Regional	A39	Ak Chin
Pegasus Air Park	5AZ3	Queen Creek

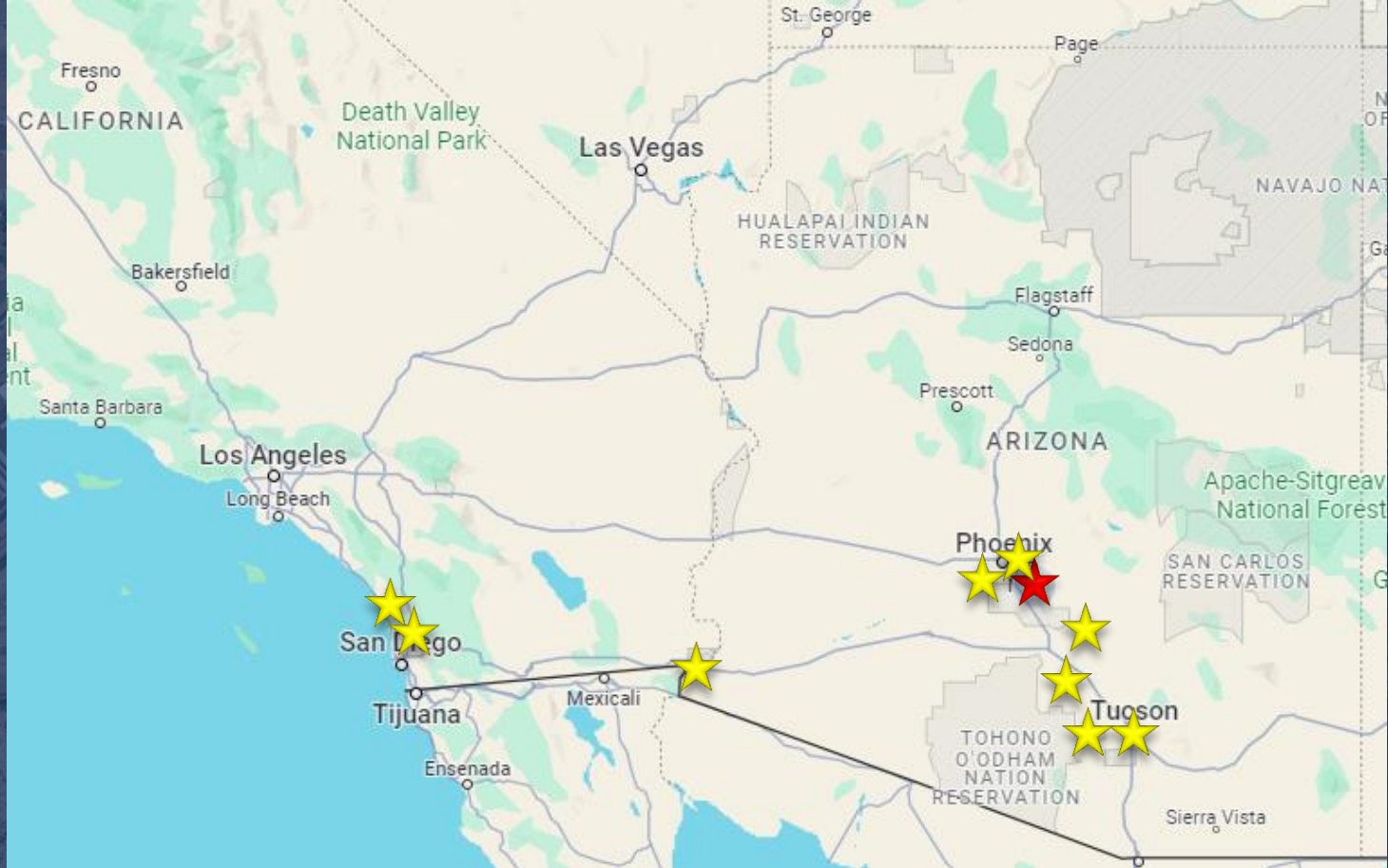
Source: Kimley-Horn

- Only 2 have less than 5,000-ft runways
- 14,836 fewer average arrivals of air taxis or air carrier ops
- 17 less jets than average (8 total)
- 4<sup>th</sup> highest in operations
- CHD's size is 275 acres less
- Closest to a 4-lane highway
- 117 more storage units (554 total)
- Pricing & services commensurate



# Market Assessment -Indirect Competitors -

- McLellan Palomar**
- Yuma**
- Scottsdale**
- Tucson**
- Montgomery-Gibbs**
- Buckeye**
- Ryan**
- Coolidge**
- Marana**





# Market Assessment - Indirect Competitors -

Indirect Competitive Airports		
Airport	Identifier	Location
McClellan Palomar	CRQ	Carlsbad, California
Yuma MCAS/ Yuma International	NYL	Yuma, Arizona
Tucson International	TUS	Tucson, Arizona
Montgomery-Gibbs Executive	MYF	San Diego, California
Indirect Comparable Airports		
Airport	Identifier	Location
Buckeye Municipal	BXK	Buckeye, Arizona
Ryan Airfield	RYN	Tucson, Arizona
Coolidge Municipal	P08	Coolidge, Arizona
Marana Regional	AVQ	Marana, Arizona

Source: Kimley-Horn

- 2<sup>nd</sup> shortest runway length
- 2<sup>nd</sup> smallest property size
- 240 more aircraft (445 total)
- 22 less jets (8 total)
- 2<sup>nd</sup> most annual operations
- 1,337 more air taxi/air carrier operations (11,785 total)
- 230 more storage units (554 total)



**- The Flightpath Forward -  
- Council Input Needed -**

- Mission -**
- Vision -**
- Values -**



# **Mission & Vision Statements - Drafts -**

## Mission

“Chandler Municipal Airport is a vibrant and accessible gateway for aviation, contributing to the City’s economic growth. We promote superior products, services, and facilities; and a culture focused on safety, efficiency, and a welcoming community spirit. The Airport is a pivotal part of the region's transportation infrastructure and aims to deliver an exceptional aviation experience.”

## Vision

“Chandler Municipal Airport aims to lead the region in aviation, serving as a model in safety, innovation, accessibility, and strong community ties. With an eye on responsible development and embracing modern technologies, we plan to foster economic growth and learning opportunities, strengthening the airport’s role as a vital community asset. Our commitment to the Airport's future, informed by our general aviation legacy, will guide us toward being a celebrated, inclusive space for all.”



# **Values Statement**

## **- Draft -**

- Safety: Our top priority is the safety of the flying public and all airport users. We pledge to uphold the highest standards of safety in every aspect of airport operations.
- Commitment: Through our commitment to serve all sectors of the general aviation industry, we ensure Chandler Municipal Airport continues to be an indispensable community asset.
- Accessibility: We support uniform and equitable access to the airport for all aeronautical activities, in strict adherence to local, state, and federal obligations.
- Innovation: Embracing the future of aviation, we integrate innovative, regulatory compliant solutions and new technologies to establish our airport as a leader in forward-thinking practices.
- Community: We forge strong connections with our local community, proudly preserving our City's rich general aviation heritage and encouraging community collaboration.



# **Strategic Business Plan Next Steps - Objectives -**



## **Prioritize & Refine Objectives**

**“Must Do”**

**“Should Do”**

**“Would like to Do”**



## **Identify Objectives Within Airport Areas**

**Organization**

**Operations**

**Marketing**

**Products, Services, & Facilities**

**Financial**



# ***Strategic Business Plan Next Steps - Action Plans -***



**Develop Action Plans &  
Budgets**



**Final Draft of the Plan**



**Obtain Council Plan  
Approval**





# ***Financial Analysis - Recommendations -***



**RESTRUCTURING  
OF AIRPORT  
FINANCIAL  
STATEMENTS FOR  
BETTER ANALYSIS  
OF OPERATING  
PERFORMANCE**



**ADJUSTMENT OF  
FUEL FLOWAGE &  
ASSOCIATED  
AIRSIDE FEES**



**ESTABLISH A  
COMMON AREA  
MAINTENANCE FEE  
FOR TENANTS WHO  
BENEFIT FROM  
SAID AREAS**



**ENSURE ALL LEASE  
RATES REMAIN AT  
CURRENT MARKET  
VALUE**



# ***Financial Analysis - Recommendations -***



**RESTRUCTURING  
OF AIRPORT  
FINANCIAL  
STATEMENTS FOR  
BETTER ANALYSIS  
OF OPERATING  
PERFORMANCE**

- Arrange financial reporting around revenue cost centers
  - Airside (runways, taxiways, apron, etc.)
  - Common Use Areas (Terminal, Landside)
  - Aviation Real Estate - Land
  - Aviation Real Estate – Improvements
  - Aviation Fuels
- Allows for finite analysis of specific revenue cost centers vs general operating costs across the facility.



# ***Financial Analysis - Recommendations -***



**ADJUSTMENT OF  
FUEL FLOWAGE &  
ASSOCIATED  
AIRSIDE FEES**

- To offset operating & non-operating expenses:
  - Increase the fuel flowage fees
    - CHD is at \$0.10/gallon
    - Other airports range from \$0.09 to \$0.12/gallon
  - Increase commercial use permit fees
    - Percentage of annual gross revenue, or;
      - Scottsdale Airport
    - Percentage of hourly billable aviation activity
      - City of Phoenix Airports



# ***Financial Analysis - Recommendations -***



**ESTABLISH A  
COMMON AREA  
MAINTENANCE FEE  
FOR TENANTS WHO  
BENEFIT FROM  
SAID AREAS**

- Add a Common Area Maintenance Fee
  - Offset expenses for new property developments
  - Applied to tenants who benefit from common areas
  - Based on individually leased properties
  - Cost divided on a per-square-foot basis
  - Variable & based on actual annual costs



## ***Financial Analysis - Recommendations -***



ENSURE ALL LEASE  
RATES REMAIN AT  
CURRENT MARKET  
VALUE

- Market assessments are historically sporadic
- Perform regular regional aviation market assessments
  - Example: every 5 years with market adjustments
    - All City of Phoenix Airports & Scottsdale perform regular market adjustments.
- Assures property revenues keep pace with fair-market values



## ***Next Steps - Goals Draft-***

Lease

Lease 30 acres of additional airport land for development, including the development of 100,000 sq-ft of aircraft storage facilities by 2029.

Increase

Increase revenues 15% by 2029, including the establishment and/or adjustment of market rents (for the lease of land & improvements) and cost-based fees (for use of the Airport).

Develop & Implement

Develop & implement a staffing plan with airport stakeholders for the continued safe operation of the Airport by 2026, especially to include operational coverage during Tower operating hours.

Develop & Update

Develop & update the Airport's Primary Management Compliance Documents (e.g., Rules & Regulations, Minimum Standards, Leasing Policy, Rents & Fees Policy, and Development Standards) by 2026.

Plan & Implement

Complete the Community Impact Study by 2025 and revisit the extension of RWY 4R/22L by 2027.

The background of the slide is a photograph of the Chandler Municipal Airport terminal building, a flagpole with the American flag, and a tower structure. The image is dimmed with a blue tint. The terminal building has "CHANDLER MUNICIPAL AIRPORT" written on its facade. The flagpole is in the center, and the tower is to the right. There are trees and a paved area in the foreground.

***“A Mile of Runway...”***  
***The Impact of Runway Length***



# AIRPORT COMMUNITY IMPACT STUDY







## - 2024 Airport Day -

- First public “Open House” in 7 years
- Expected between 3,000 and 5,000 attendees
- Between 8,000 and 10,000 attended
- Highlighted every decade and type of flight at CHD
- Reacquainted our flying to community to our residential community





**MARKETING  
&  
INDUSTRY  
ENGAGEMENT**





# ***RWY 4R-22L Improvement - Community Impact Study -***

## **- What the Community Impact Study Means -**

The Study is a long-term approach with a near-term objective of illustrating the Airport's need of a Runway Extension for a safe, efficient, and economically advancing community.

Through the Study, we will build lasting interconnected relationships between the Airport and the community by fostering an understanding of the Airport as part of Chandler's critical community infrastructure.



# ***RWY 4R-22L Extension*** **- *Community Impact Study* -** **- *4-Phased Approach - Scope of Work* -**

**We are here:**



## **1. Establish**

**Research, Project Definition, & Study Programming**



## **2. Prepare**

**Conceptual Runway Design, Economic Analysis, & Outreach Material Development**



## **3. Engage**

**Community Outreach, Information Sharing, & Feedback Collection**



## **4. Sustainability**

**Ongoing Community Partnerships & Support Implementation**



# ***RWY 4R-22L Improvement - Community Impact Study -***

- Project Kickoff Phase 1 – February 2024
- Initial Inventory provided for Analysis:
  - Internal & External Stakeholders
  - All studies and plans, both completed and underway, to inform the scope
  - Qualitative & Quantitative questions to shape technical analyses.
  - Airport Noise Report history.
  - Comprehensive list of upcoming City events to frame Public Outreach.



# **- RWY 4R-22L Improvement - Community Impact Study - - Phase 1-**

## Establishing

- Focus:
  - Proactive community engagement at the outset
- Actions:
  - Preliminary Research
  - Project Definition
  - Study Programming
- Timeline: Approximately 5 to 8 months in duration



# ***RWY 4R-22L Improvement - Community Impact Study - - Phase 1 -***

## Preliminary Research

- Collect key background information on airport operations, historical economic development, and known or perceived development issues
- Conduct a gap analysis & needs assessment of Airport marketing materials and outreach methods
- Establish current impact of the Airport within the community
- Analysis of policy, case studies, and recommendations for runway extension



# ***RWY 4R-22L Improvement - Community Impact Study - - Phase 1 -***

## Project Definition

- Establish project team leaders, City, and internal stakeholders
- Hold a 1-day In-Person Workshop (NTP +45 days)
  - Stakeholder mapping
  - Issues Mapping
  - SWOT Analysis
- Conduct up to 8 Interview Sessions
  - Policy Makers
  - Stakeholders
  - Key Officials





# ***RWY 4R-22L Improvement - Community Impact Study - - Stakeholders -***

## **Internal**

- Airport
- Mayor & Council
- City Manager
- Key Departments

## **External**

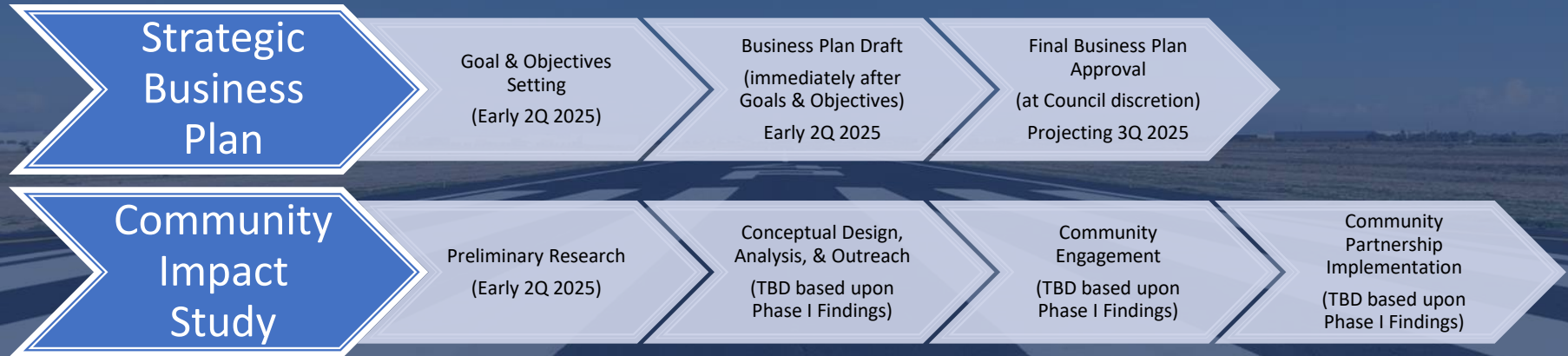
- Chandler Residents
- Airport Users
- Major Employers
- Community Businesses & Organizations
- Nearby Neighborhoods
- Aviation Enthusiasts

# ***RWY 4R-22L Improvement - Community Impact Study - - Phase 1 -***

## Study Programming

- Complete a draft Study Program (NTP +120 days) outlining:
  - Communications & Informational Plan
  - Public Engagement Plan
  - Progress Checkpoints
  - Project Schedule (Phases 2 through 4)

# Coordinated Timelines





**CHANDLER**  
MUNICIPAL AIRPORT  
CHD

***THANK YOU!***

