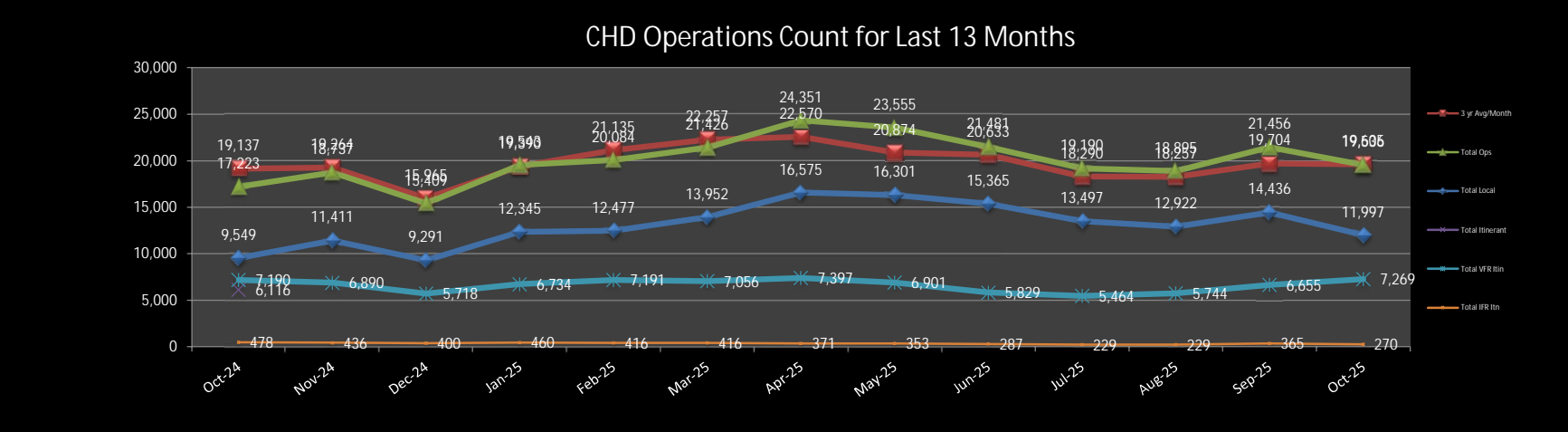




# Airport Operations Report OCTOBER 2025

Meeting Date:  
February 11, 2026



3 yr Avg/Month  
Total Ops  
Total Local  
Total Itinerant  
Total VFR Itin  
Total IFR Itin

	Oct-24	Nov-24	Dec-24	Jan-25	Feb-25	Mar-25	Apr-25	May-25	Jun-25	Jul-25	Aug-25	Sep-25	Oct-25
3 yr Avg/Month	19,137	19,264	15,965	19,390	21,135	22,257	22,570	20,874	20,633	18,290	18,257	19,704	19,605
Total Ops	17,223	18,737	15,409	19,543	20,084	21,426	24,351	23,555	21,481	19,190	18,895	21,456	19,536
Total Local	9,549	11,411	9,291	12,345	12,477	13,952	16,575	16,301	15,365	13,497	12,922	14,436	11,997
Total Itinerant	7,668	7,326	6,118	7,194	7,607	7,472	7,768	7,254	6,116	5,693	5,973	7,020	7,539
Total VFR Itin	7,190	6,890	5,718	6,734	7,191	7,056	7,397	6,901	5,829	5,464	5,744	6,655	7,269
Total IFR Itin	478	436	400	460	416	416	371	353	287	229	229	365	270

Total Operations between November-24 and October-25: **243,663**  
 Total Operations between November-23 and October-24: **245,018**

National 12 Month Ranking				9/2024 Rankings		
Airport	Airport Code	US Ranking	GA Ranking	Airport	US Ranking	GA Ranking
Deer Valley	DVT	9	1	DVT	15	1
Falcon Field	FFZ	11	2	FFZ	17	2
Gateway	IWA	37	13	IWA	33	10
<b>Chandler</b>	<b>CHD</b>	<b>47</b>	<b>18</b>	<b>CHD</b>	<b>46</b>	<b>17</b>
Scottsdale	SDL	82	38	GYR	53	21
Goodyear	GYR	87	41	SDL	87	41
Glendale	GEU	118	67	GEU	132	81