

PLH26-0003

Move Human Performance

Exhibits

Location:

375 E. Elliot Road, Suite 7, approximately 1/4 mile east of the southeast corner of Arizona Avenue and Elliot Road.

Table of Contents

1. Narrative
2. Map
3. Site Plan
4. Floor Plan



MEMORANDUM

To: City of Chandler
From: Brennan Ray
Date: January 16, 2026
Re: **Use Permit – Move Human Performance
375 E. Elliot Road, Suites 7-9 (East of the SEC of Arizona Ave. and Elliot Rd.)**

Our office is working with Move Human Performance, LLC (“MOVE”) in connection with their sports training and therapy business located at 375 East Elliot Road, Suites 7-9 (the “Site”). Attached as **Exhibit 1** is an aerial of the Site with the MOVE suite identified. The Site is part of a larger 240-acre business park known as “Arizona Corporate Park”. Arizona Corporate Park (and the Site) is zone Light-Industrial with a Planned Area Development Overlay. A sports training and therapy facility is permitted under I-1 with a Use Permit.

MOVE first obtained approval of Use Permit on September 14, 2017 and an extension of the Use Permit on May 28, 2020 (PLH20-0015). MOVE expanded their business in 2021 to an adjacent suite and amended the Use Permit in 2021 to include the new suite (PLH21-0004 and 2).

MOVE has operated on the Site in conformance with the Use Permit for 8 years without any interference or disruption to the existing businesses. MOVE continues to be a compatible use for the Site and surrounding area.

MOVE offers Post Rehab care, Spinal cord injury long term care, Sports Performance Classes, and Fitness training. Training is by appointment only. The typical hours of operation are 7 a.m. to 7 p.m. on Monday, Wednesday, and Friday, 5 a.m. to 5 p.m. on Tuesday and Thursday, and 8 a.m. to noon on Saturday. Staffing typically consists of the two business owners and 5 employees. MOVE provides a valuable and needed service to the City and its residents.

The site provides approximately 245 parking space. Adequate parking is available for the proposed use. The Site Plan is attached as **Exhibit 2**. The Floor Plan is attached as **Exhibit 3**.

MOVE respectfully requests approval of the Use Permit without any time restriction.



302-92-538

302-92-530A

302-92-536

302-26-954

302-26-005H

302-26-891

302-24-420

302-24-421B

302-24-421B

302-29-016A

302-29-068

302-29-069

302-24-425

302-24-424

313-01-977

313-01-978

313-01-980

313-01-981

302-24-260

302-24-263

302-24-273

302-24-271

302-29-0314

302-29-0314

302-29-0314

302-29-0314

302-29-0314

302-29-0314

302-29-0314

302-29-0314

302-29-0314

302-29-0314

302-29-0314

302-29-0314

302-29-0314

302-24-270

302-24-273

302-24-271

302-29-078

302-29-078

302-29-078

302-29-078

302-29-078

302-29-078

302-29-078

302-29-078

302-29-078

302-29-078

302-29-078

302-29-078

302-23-100

302-29-451

302-29-452

302-29-453

302-29-454

302-29-455

302-29-456

302-29-457

302-29-458

302-29-459

302-29-460

302-29-461

302-29-462

302-29-463

302-29-464

302-29-413

302-29-414

302-29-415

302-29-416

302-29-417

302-29-418

302-29-419

302-29-420

302-29-421

302-29-422

302-29-423

302-29-424

302-29-425

302-29-426

302-29-427

302-29-428

302-29-429

W ELLIOT RD

E ELLIOT RD

E ELLIOT RD

E ELLIOT RD

E ELLIOT RD

W ELLIOT RD

E Alamo Dr

E Comstock Dr

E Comstock Dr

S Nevada St

S Hamilton Pl

S William Dillard Dr

W Sierra Madre Ave

WEST POINT BUSINESS PARK M.D.

WEST POINT BUSINESS PARK M.D.

MAXIM 35-528 INTEGRATED BLDG

MAXIM 35-528 INTEGRATED BLDG

MAXIM 35-528 INTEGRATED BLDG

MAXIM 35-528 INTEGRATED BLDG

ARIZONA CORPORATE PARK UNIT 1 & 15

ARIZONA CORPORATE PARK UNIT 2 & 20

ARIZONA CORPORATE PARK UNIT 2

ARIZONA CORPORATE PARK 3

ARIZONA CORPORATE PARK

ARIZONA CORPORATE PARK

ARIZONA CORPORATE PARK

ARIZONA CORPORATE PARK

ARIZONA CORPORATE PARK

ARIZONA CORPORATE PARK

ARIZONA CORPORATE PARK

ARIZONA CORPORATE PARK

ARIZONA CORPORATE PARK

ARIZONA CORPORATE PARK

ARIZONA CORPORATE PARK

ARIZONA CORPORATE PARK

ARIZONA CORPORATE PARK

ARIZONA CORPORATE PARK

ARIZONA CORPORATE PARK

ARIZONA CORPORATE PARK

ARIZONA CORPORATE PARK

ARIZONA CORPORATE PARK

ARIZONA CORPORATE PARK

ARIZONA CORPORATE PARK

ARIZONA CORPORATE PARK

ARIZONA CORPORATE PARK

ARIZONA CORPORATE PARK

ARIZONA CORPORATE PARK

ARIZONA CORPORATE PARK

ARIZONA CORPORATE PARK

ARIZONA CORPORATE PARK

ARIZONA CORPORATE PARK

ARIZONA CORPORATE PARK

ARIZONA CORPORATE PARK

ARIZONA CORPORATE PARK

ARIZONA CORPORATE PARK

ARIZONA CORPORATE PARK

ARIZONA CORPORATE PARK

ARIZONA CORPORATE PARK

ARIZONA CORPORATE PARK

ARIZONA CORPORATE PARK

ARIZONA CORPORATE PARK

ARIZONA CORPORATE PARK

ARIZONA CORPORATE PARK

ARIZONA CORPORATE PARK

ARIZONA CORPORATE PARK

ARIZONA CORPORATE PARK

ARIZONA CORPORATE PARK

ARIZONA CORPORATE PARK

ARIZONA CORPORATE PARK

ARIZONA CORPORATE PARK

ARIZONA CORPORATE PARK

ARIZONA CORPORATE PARK

ARIZONA CORPORATE PARK

ARIZONA CORPORATE PARK

ARIZONA CORPORATE PARK

ARIZONA CORPORATE PARK

ARIZONA CORPORATE PARK

ARIZONA CORPORATE PARK

ARIZONA CORPORATE PARK

ARIZONA CORPORATE PARK

ARIZONA CORPORATE PARK

ARIZONA CORPORATE PARK

ARIZONA CORPORATE PARK

ARIZONA CORPORATE PARK

ARIZONA CORPORATE PARK

ARIZONA CORPORATE PARK

ARIZONA CORPORATE PARK

ARIZONA CORPORATE PARK

ARIZONA CORPORATE PARK

ARIZONA CORPORATE PARK

ARIZONA CORPORATE PARK

ARIZONA CORPORATE PARK

ARIZONA CORPORATE PARK

ARIZONA CORPORATE PARK

ARIZONA CORPORATE PARK

ARIZONA CORPORATE PARK

ARIZONA CORPORATE PARK

ARIZONA CORPORATE PARK

ARIZONA CORPORATE PARK

ARIZONA CORPORATE PARK

ARIZONA CORPORATE PARK

ARIZONA CORPORATE PARK

ARIZONA CORPORATE PARK

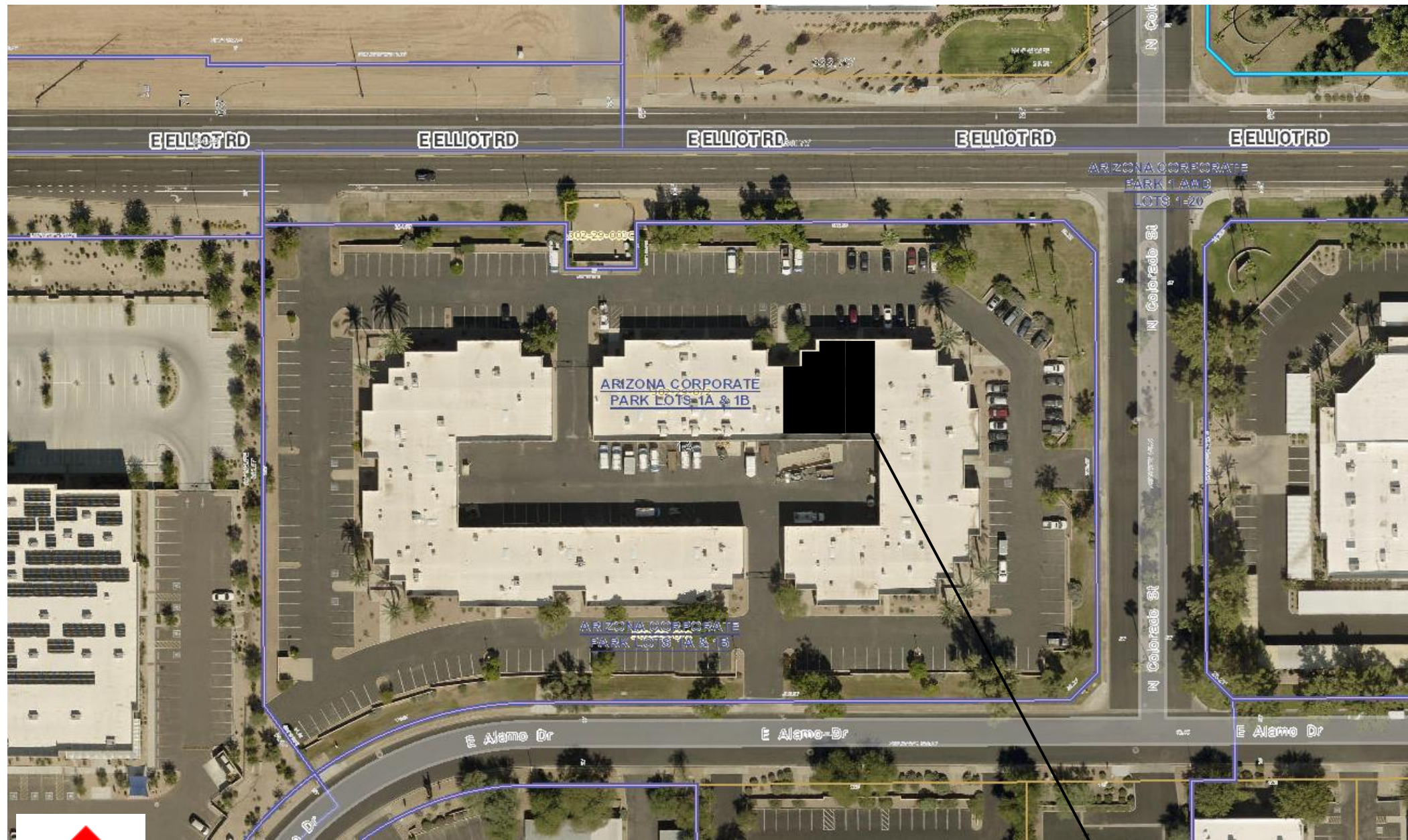
ARIZONA CORPORATE PARK

ARIZONA CORPORATE PARK

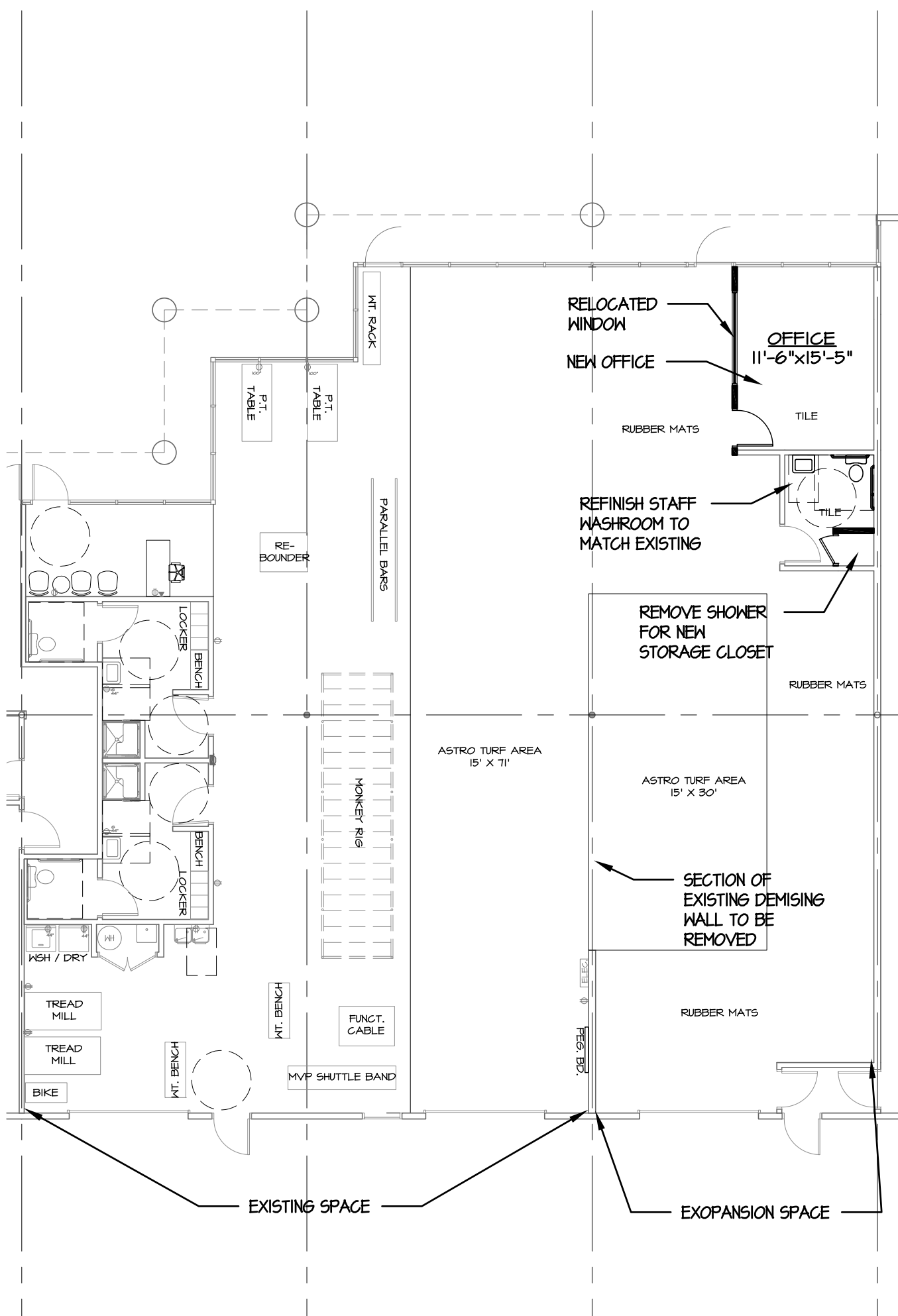
ARIZONA CORPORATE PARK

ARIZONA CORPORATE PARK

ARIZONA CORPORATE PARK



Site



PLAN OPTION A
MOVE HUMAN PERFORMANCE
375 E. ELLIOT RD SUITE 7
 SCALE: 1/8"=1'-0" DATE: 12/28/2020

PRELIMINARY
 NOT FOR CONSTRUCTION

BCMA
 ARCHITECTURE